

Figure S1: Average particulate matter readings and interquartile ranges for all PM_{1.0} data. The marked red line indicates the daily average particulate matter reading concentration (µg/m³)

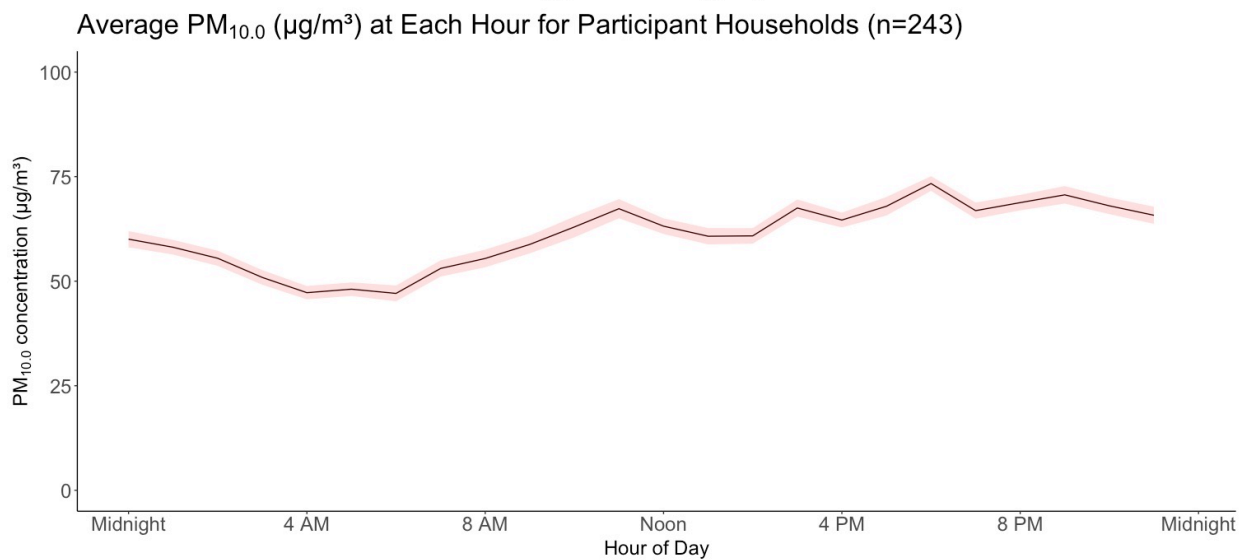
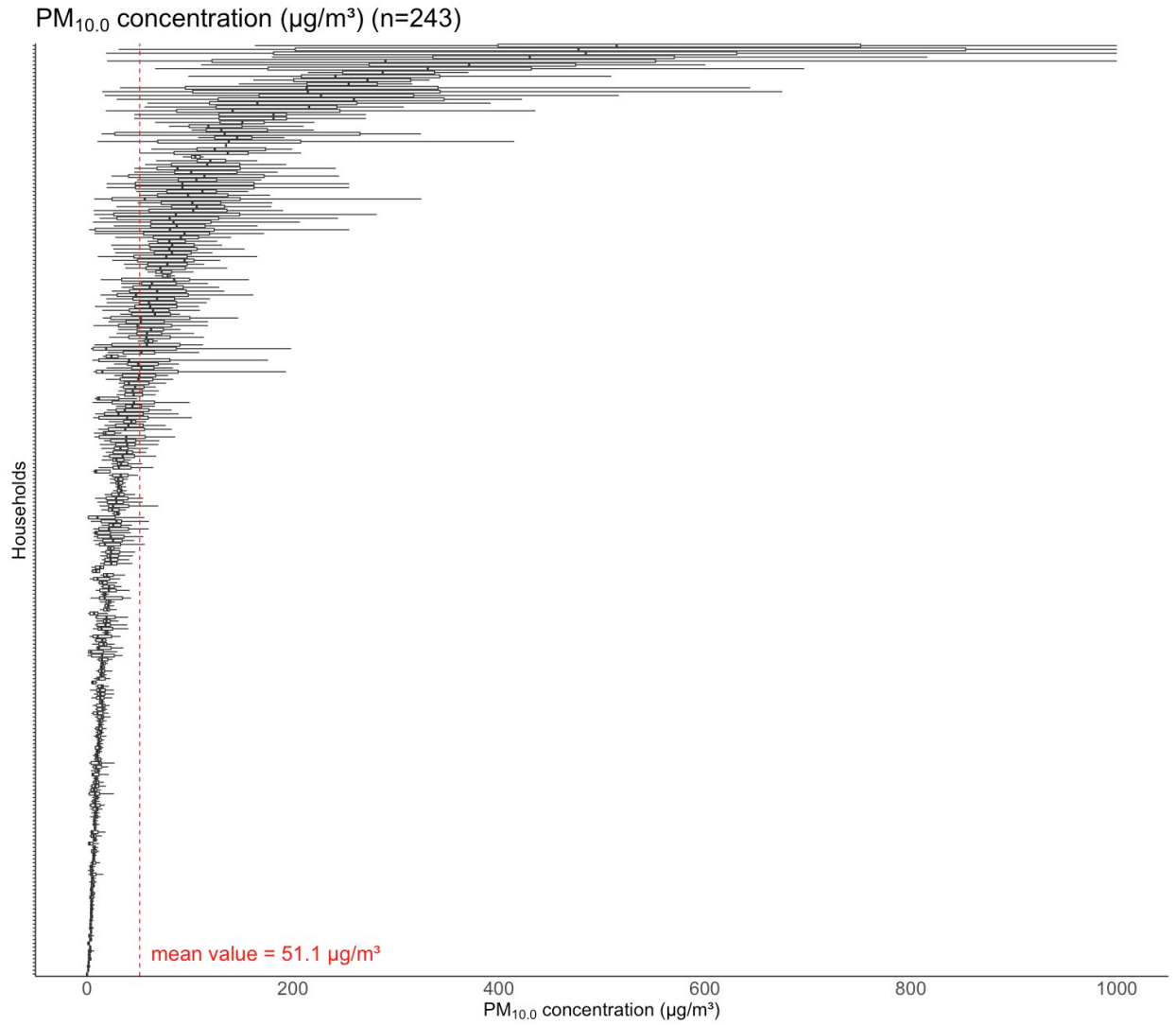


Figure S2: Average particulate matter readings and interquartile ranges for all PM_{10.0} data. The marked red line indicates the daily average particulate matter reading concentration ($\mu\text{g}/\text{m}^3$)

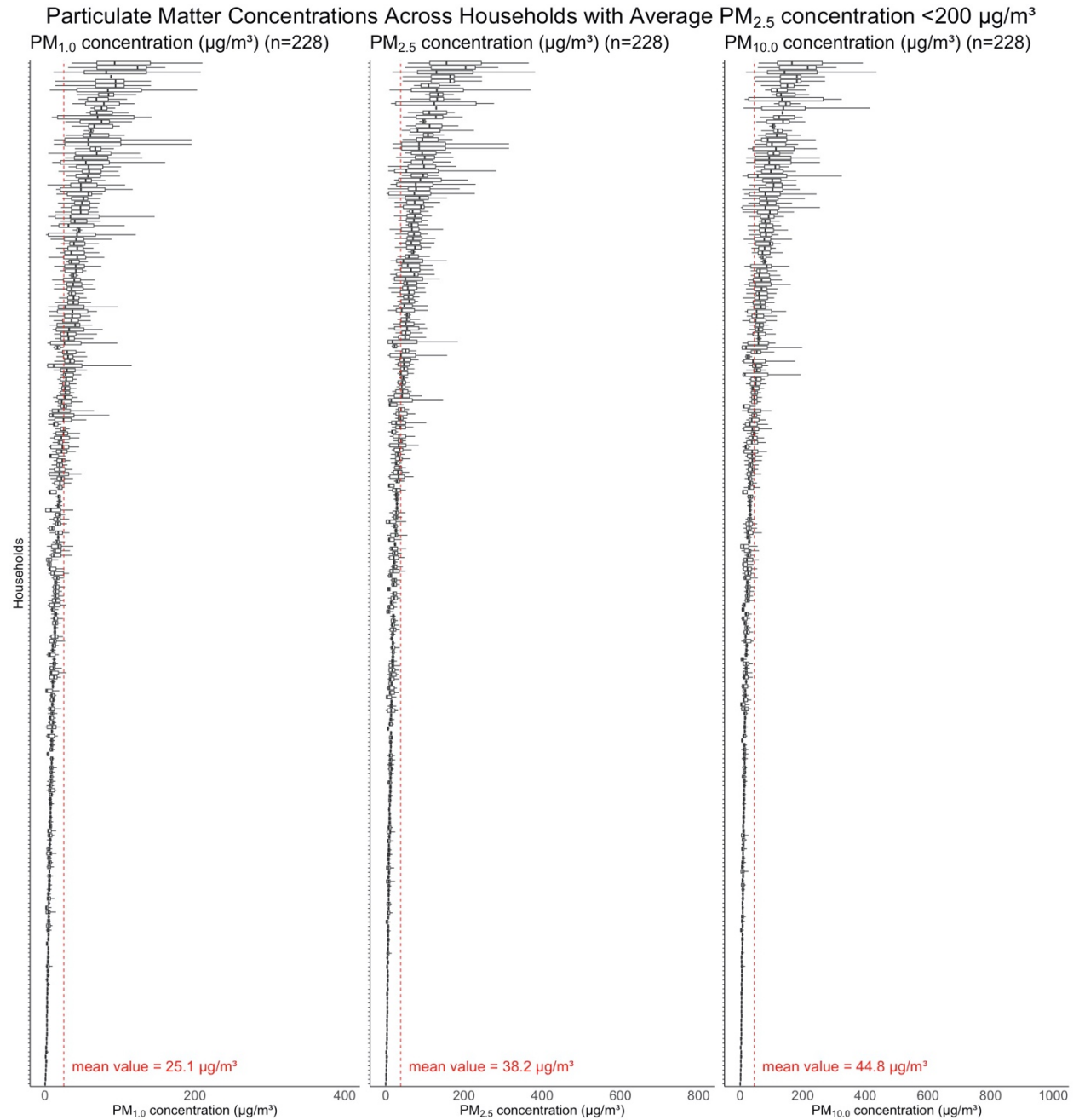


Figure S3: Average particulate matter readings and interquartile ranges for $PM_{2.5}$, $PM_{1.0}$, and $PM_{10.0}$ for all households with average $PM_{2.5}$ readings $< 200 \mu\text{g}/\text{m}^3$. The marked red line indicates the daily average particulate matter reading concentration ($\mu\text{g}/\text{m}^3$)

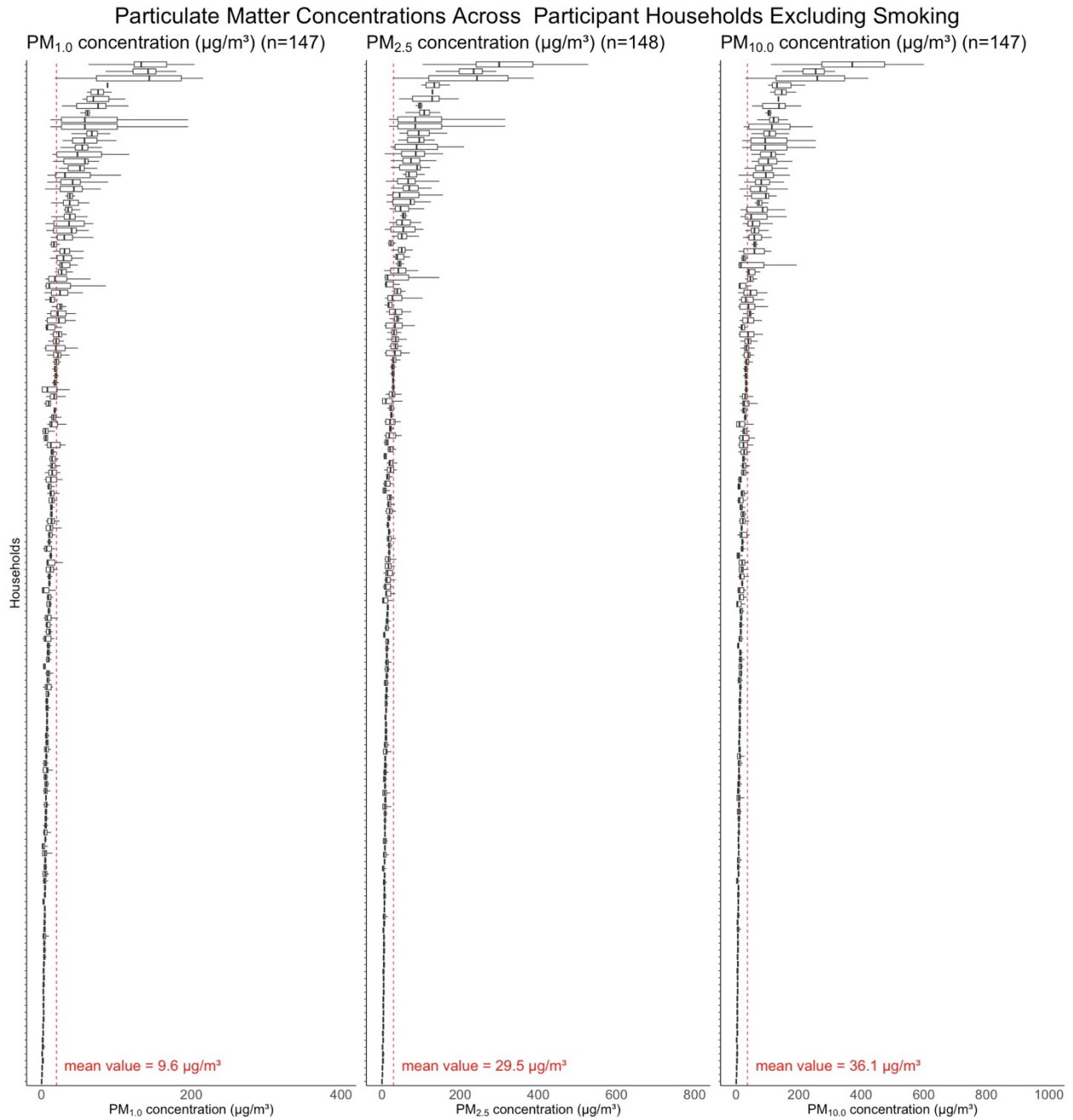


Figure S4: Average particulate matter readings and interquartile ranges for PM_{2.5}, PM_{1.0}, and PM_{10.0} for all households, excluding households that reported smoking status. The marked red line indicates the daily average particulate matter reading concentration ($\mu\text{g}/\text{m}^3$)

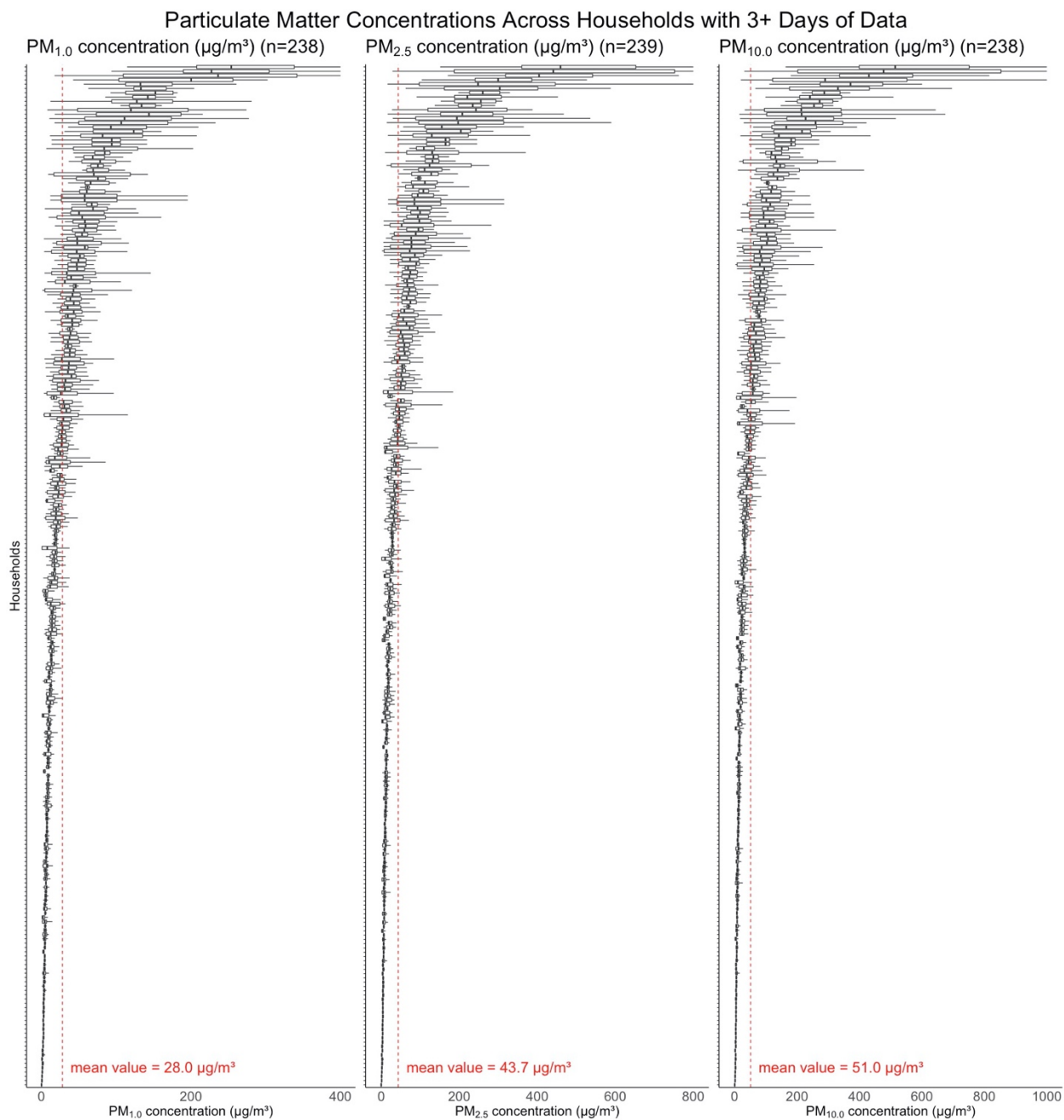


Figure S5: Average particulate matter readings and interquartile ranges for PM_{2.5}, PM_{1.0}, and PM_{10.0} for households with PM readings spanning 3+ days. The marked red line indicates the daily average particulate matter reading concentration ($\mu\text{g}/\text{m}^3$)

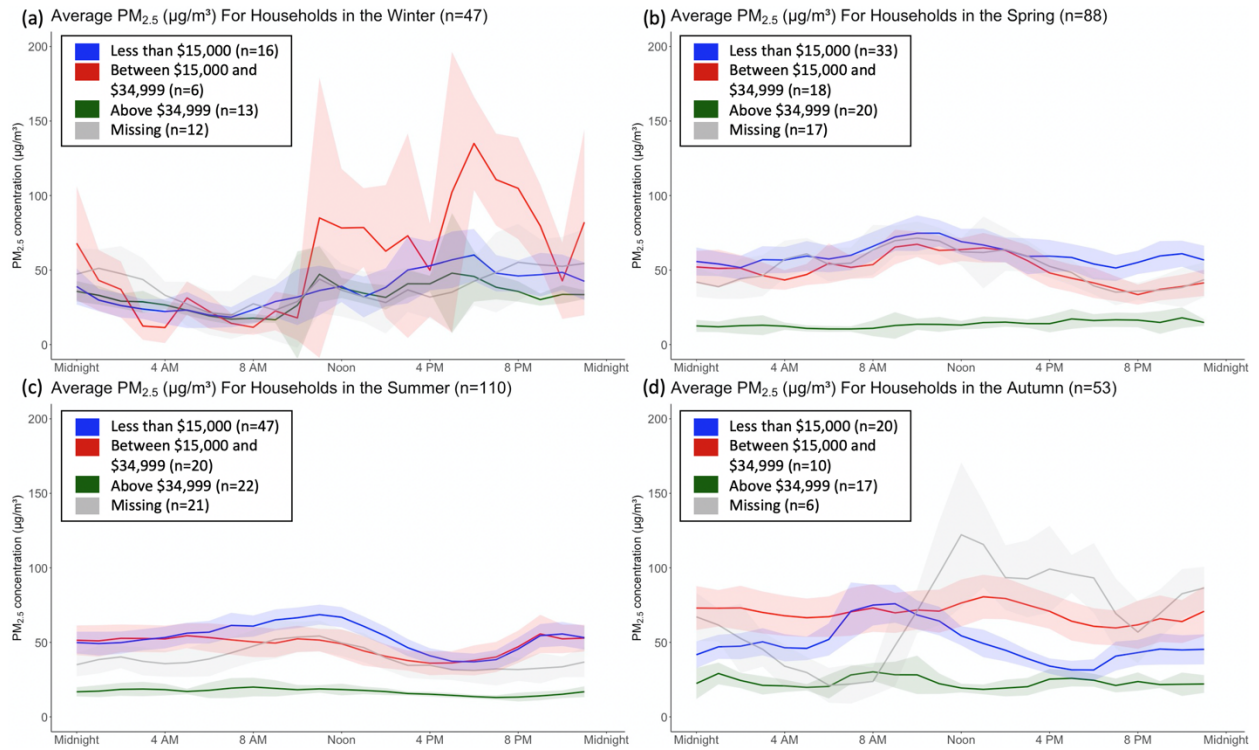


Figure S6: Average PM_{2.5} concentrations (µg/m³) for all households, stratified by household income across seasons

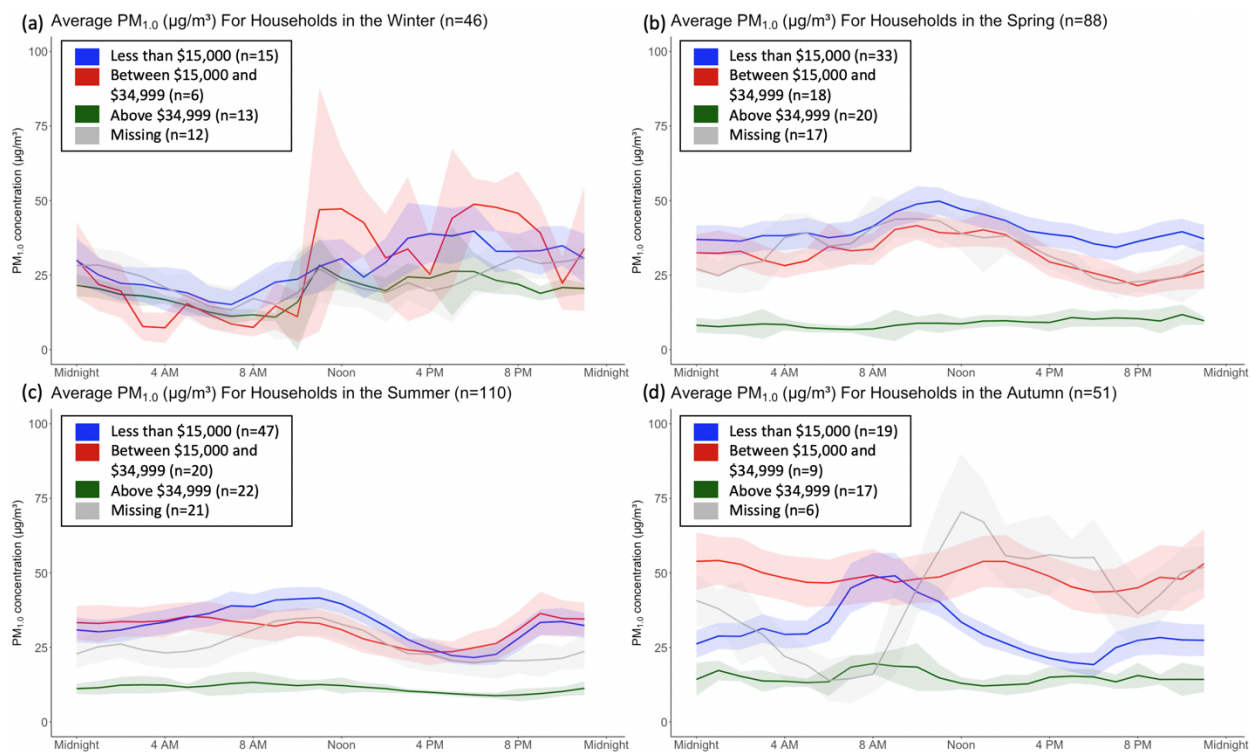


Figure S7: Average PM_{1.0} concentrations (µg/m³) for all households, stratified by household income across seasons

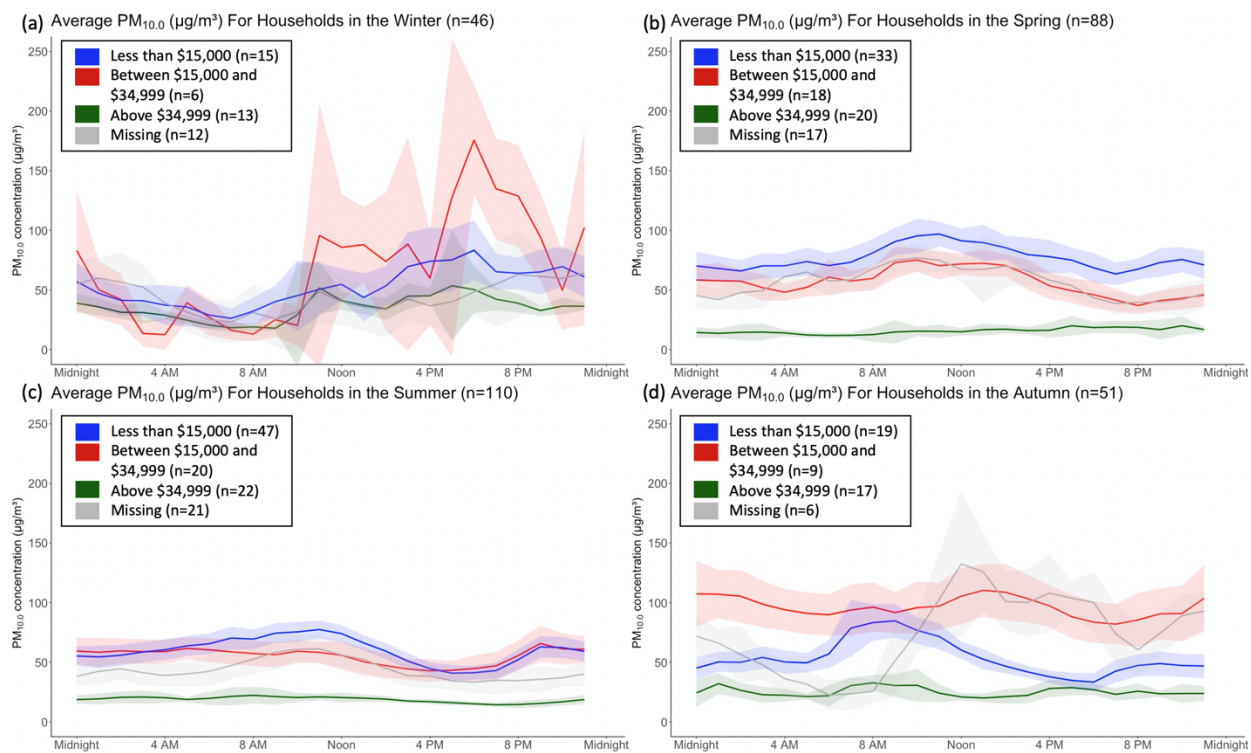


Figure S8: Average PM_{10.0} concentrations (µg/m³) for all households, stratified by household income across seasons

Hour	Black/African American			Non-Black/African American			Missing		
	Average Concentration	Standard Deviation	Standard Error	Average Concentration	Standard Deviation	Standard Error	Average Concentration	Standard Deviation	Standard Error
0	29.3	12.6	0.9	19.3	11.5	1.6	16.7	6.4	2.8
1	29.2	12.3	0.9	20.0	10.8	1.5	14.2	4.7	2.1
2	29.2	12.3	0.9	20.7	10.8	1.5	15.0	10.8	4.8
3	29.3	12.5	0.9	19.5	11.0	1.5	15.2	12.8	5.7
4	29.2	12.3	0.9	18.7	9.2	1.3	16.4	6.8	3.0
5	30.0	12.1	0.9	17.0	9.3	1.3	18.1	8.6	3.9
6	30.3	13.2	1.0	16.8	12.5	1.8	16.7	10.6	4.8
7	31.3	13.5	1.0	20.4	13.2	1.8	23.1	10.6	4.8
8	32.6	13.5	1.0	21.4	12.8	1.8	24.2	22.0	9.8
9	34.3	13.9	1.0	21.4	12.4	1.7	26.6	11.6	5.2
10	35.2	14.0	1.0	20.8	12.1	1.7	26.2	11.9	5.3
11	36.2	12.9	0.9	19.7	12.5	1.8	20.7	6.8	3.0
12	34.5	11.0	0.8	19.1	11.6	1.6	18.4	4.0	1.8
13	32.4	11.5	0.8	19.3	9.9	1.4	15.7	4.0	1.8
14	30.4	10.1	0.7	18.9	11.2	1.6	14.9	3.6	1.6
15	28.0	10.3	0.8	20.1	11.4	1.6	13.3	2.8	1.2
16	25.9	9.6	0.7	21.4	11.7	1.6	11.3	1.7	0.7
17	24.7	10.0	0.7	21.5	14.5	2.0	9.3	1.5	0.7
18	24.0	10.3	0.8	20.9	9.3	1.3	9.7	2.9	1.3
19	24.4	11.5	0.8	19.1	10.0	1.4	12.3	11.2	5.0
20	26.5	12.2	0.9	18.8	9.5	1.3	18.1	6.0	2.7
21	28.9	13.7	1.0	18.8	9.8	1.4	19.3	9.4	4.2
22	29.3	13.3	1.0	19.5	10.6	1.5	19.9	10.3	4.6
23	29.6	13.5	1.0	20.2	10.9	1.5	19.6	6.6	3.0

Table S1: Average PM_{1.0} readings for all households at each hour, stratified by race

Hour	Black/African American			Non-Black/African American			Missing		
	Average Concentration	Standard Deviation	Standard Error	Average Concentration	Standard Deviation	Standard Error	Average Concentration	Standard Deviation	Standard Error
0	45.1	23.0	1.7	30.6	20.3	2.8	26.5	10.2	4.6
1	44.8	22.1	1.6	32.0	19.3	2.7	22.4	7.2	3.2
2	44.6	21.8	1.6	33.3	20.3	2.8	23.5	18.3	8.2
3	44.7	21.8	1.6	31.6	20.2	2.8	23.9	20.6	9.2
4	44.2	21.2	1.5	29.4	16.0	2.2	25.8	11.9	5.3
5	45.8	21.3	1.6	26.4	17.2	2.4	28.7	15.1	6.8
6	46.1	23.2	1.7	25.8	21.8	3.1	26.0	15.9	7.1
7	48.1	25.7	1.9	31.9	24.3	3.4	34.6	17.2	7.7
8	50.2	23.9	1.7	34.0	25.5	3.6	37.1	35.7	16.0
9	53.2	24.6	1.8	33.8	23.4	3.3	41.7	20.4	9.1
10	54.9	26.3	1.9	33.1	27.0	3.8	41.7	20.7	9.3
11	56.6	24.5	1.8	31.1	24.7	3.5	32.9	10.6	4.7
12	54.3	21.3	1.6	30.4	23.1	3.2	29.1	6.6	3.0
13	51.3	24.2	1.8	31.2	20.0	2.8	25.2	7.9	3.5
14	48.1	20.5	1.5	30.5	22.0	3.1	23.8	5.9	2.6
15	44.3	22.1	1.6	33.0	25.1	3.5	21.0	5.4	2.4
16	41.1	19.6	1.4	35.2	23.2	3.2	17.5	2.7	1.2
17	39.5	22.4	1.6	35.8	35.2	4.9	14.3	2.4	1.1
18	38.5	20.8	1.5	34.8	22.0	3.1	15.4	5.7	2.6
19	38.5	22.0	1.6	30.5	20.7	2.9	19.6	18.7	8.4
20	41.2	22.7	1.7	30.0	19.3	2.7	29.2	10.7	4.8
21	45.1	24.7	1.8	30.4	20.9	2.9	30.7	15.4	6.9
22	45.5	23.0	1.7	31.4	22.7	3.2	31.9	17.6	7.9
23	45.9	24.8	1.8	32.4	21.5	3.0	31.1	11.0	4.9

Table S2: Average PM_{2.5} readings for all households at each hour, stratified by race

Hour	Black/African American			Non-Black/African American			Missing		
	Average Concentration	Standard Deviation	Standard Error	Average Concentration	Standard Deviation	Standard Error	Average Concentration	Standard Deviation	Standard Error
0	53.6	28.2	2.1	33.4	22.3	3.1	30.1	11.2	5.0
1	53.3	27.1	2.0	35.2	21.4	3.0	25.3	7.6	3.4
2	52.9	25.9	1.9	36.6	23.4	3.3	26.8	21.3	9.5
3	52.8	25.6	1.9	34.9	23.6	3.3	26.8	22.0	9.9
4	52.1	24.7	1.8	32.2	18.2	2.5	28.5	12.9	5.8
5	53.8	24.7	1.8	28.8	19.2	2.7	31.6	16.5	7.4
6	54.0	26.1	1.9	28.2	24.1	3.4	28.6	17.0	7.6
7	56.2	29.6	2.2	34.9	27.2	3.8	37.8	18.5	8.3
8	58.6	27.0	2.0	37.3	29.0	4.1	40.8	38.4	17.2
9	62.4	28.3	2.1	37.0	26.4	3.7	46.2	22.2	9.9
10	64.6	31.5	2.3	36.4	33.5	4.7	45.7	22.5	10.0
11	66.8	28.6	2.1	34.1	27.8	3.9	36.6	11.4	5.1
12	64.0	25.0	1.8	33.3	26.8	3.8	32.7	7.9	3.5
13	60.2	28.7	2.1	34.4	23.2	3.2	28.4	8.9	4.0
14	56.8	24.8	1.8	33.7	24.6	3.4	26.9	6.7	3.0
15	52.6	26.7	2.0	36.3	28.9	4.0	23.6	6.0	2.7
16	48.8	24.6	1.8	38.6	25.7	3.6	19.5	3.3	1.5
17	46.6	27.2	2.0	39.2	40.4	5.7	15.9	2.7	1.2
18	45.5	24.1	1.8	38.1	25.8	3.6	17.1	6.1	2.7
19	45.1	25.6	1.9	33.1	23.4	3.3	22.1	20.3	9.1
20	48.8	27.1	2.0	32.6	22.5	3.2	33.4	12.1	5.4
21	53.4	29.0	2.1	33.1	24.2	3.4	35.1	17.4	7.8
22	53.7	27.4	2.0	34.2	26.1	3.7	36.8	20.4	9.1
23	54.3	29.8	2.2	35.3	24.0	3.4	35.3	12.1	5.4

Table S3: Average PM_{10.0} readings for all households at each hour, stratified by race

Hour	More Deprived			Less Deprived			Missing		
	Average Concentration	Standard Deviation	Standard Error	Average Concentration	Standard Deviation	Standard Error	Average Concentration	Standard Deviation	Standard Error
0	27.6	23.1	2.1	26.9	22.5	2.1	33.4	17.2	7.0
1	28.2	23.6	2.1	26.2	20.2	1.9	33.5	14.4	5.9
2	28.1	21.8	1.9	26.9	21.7	2.1	30.5	18.6	7.6
3	27.5	22.3	2.0	27.4	21.3	2.0	29.6	18.9	7.7
4	27.5	21.2	1.9	26.9	20.3	1.9	32.1	15.0	6.1
5	28.5	22.9	2.0	26.7	18.5	1.8	32.3	19.4	7.9
6	28.6	24.5	2.2	26.7	22.3	2.1	34.4	13.9	5.7
7	30.5	29.8	2.7	28.0	21.2	2.0	35.3	13.3	5.4
8	32.4	26.5	2.4	28.4	22.8	2.2	37.6	20.4	8.3
9	33.8	25.6	2.3	30.2	23.6	2.2	36.7	22.3	9.1
10	34.8	29.7	2.6	30.6	23.8	2.3	36.5	14.5	5.9
11	35.1	26.2	2.3	31.3	22.9	2.2	37.8	22.5	9.2
12	33.0	22.3	2.0	30.2	20.8	2.0	37.6	20.7	8.4
13	31.1	24.1	2.1	28.5	23.0	2.2	36.9	10.1	4.1
14	29.1	21.2	1.9	27.0	20.0	1.9	35.9	13.9	5.7
15	27.4	24.2	2.2	24.7	20.7	2.0	35.6	14.7	6.0
16	25.8	21.2	1.9	23.4	19.4	1.8	33.3	10.0	4.1
17	24.4	20.2	1.8	22.9	28.5	2.7	30.5	15.7	6.4
18	23.5	20.4	1.8	22.3	21.8	2.1	31.3	14.0	5.7
19	23.4	22.4	2.0	22.4	21.6	2.0	34.2	18.4	7.5
20	24.9	21.3	1.9	24.6	23.6	2.2	35.9	16.4	6.7
21	26.3	24.2	2.2	27.1	23.8	2.3	37.6	26.2	10.7
22	27.0	23.6	2.1	27.4	22.7	2.2	37.2	16.3	6.7
23	28.2	24.0	2.1	27.1	24.4	2.3	35.4	26.0	10.6

Table S4: Average PM_{1.0} readings for all households at each hour, stratified by area deprivation index

Hour	More Deprived			Less Deprived			Missing		
	Average Concentration	Standard Deviation	Standard Error	Average Concentration	Standard Deviation	Standard Error	Average Concentration	Standard Deviation	Standard Error
0	40.9	23.1	2.1	43.4	22.2	2.1	51.2	17.2	7.0
1	42.0	23.5	2.1	42.1	20.0	1.9	51.5	14.4	5.9
2	41.5	21.9	1.9	43.2	21.4	2.0	47.2	18.6	7.6
3	40.5	22.4	2.0	43.9	21.0	2.0	45.7	18.9	7.7
4	40.3	21.2	1.9	42.3	20.1	1.9	50.1	15.0	6.1
5	42.1	22.9	2.0	42.6	18.3	1.7	49.4	19.4	7.9
6	42.1	24.3	2.2	42.4	22.1	2.1	53.4	13.9	5.7
7	45.6	29.6	2.6	44.5	21.1	2.0	54.6	13.3	5.4
8	48.7	26.3	2.3	45.6	22.6	2.1	58.7	20.4	8.3
9	50.7	25.4	2.2	48.9	23.4	2.2	57.7	22.3	9.1
10	52.8	29.4	2.6	49.7	23.5	2.2	56.5	14.5	5.9
11	52.9	26.0	2.3	51.3	22.7	2.2	59.0	22.5	9.2
12	49.5	22.3	2.0	50.2	20.6	2.0	59.8	20.7	8.4
13	47.1	24.7	2.2	47.5	22.8	2.2	58.3	10.1	4.1
14	44.0	21.7	1.9	45.1	19.9	1.9	55.2	13.9	5.7
15	42.0	24.3	2.2	41.2	20.9	2.0	54.9	14.7	6.0
16	39.6	21.2	1.9	38.8	19.3	1.8	51.8	10.0	4.1
17	37.8	20.9	1.9	38.2	28.2	2.7	47.7	15.7	6.4
18	36.3	20.6	1.8	37.7	21.5	2.0	48.9	14.0	5.7
19	35.4	22.6	2.0	37.0	21.3	2.0	53.8	18.4	7.5
20	36.6	21.3	1.9	40.5	23.4	2.2	56.1	16.4	6.7
21	39.2	24.5	2.2	44.6	23.5	2.2	59.6	26.2	10.7
22	40.6	23.8	2.1	44.3	22.5	2.1	57.7	16.3	6.7
23	42.0	24.1	2.1	44.2	24.1	2.3	55.5	26.0	10.6

Table S5: Average PM_{2.5} readings for all households at each hour, stratified by area deprivation index

Hour	More Deprived			Less Deprived			Missing		
	Average Concentration	Standard Deviation	Standard Error	Average Concentration	Standard Deviation	Standard Error	Average Concentration	Standard Deviation	Standard Error
0	50.5	23.1	2.1	49.2	22.5	2.1	56.4	17.2	7.0
1	51.4	23.6	2.1	47.9	20.2	1.9	56.8	14.4	5.9
2	50.6	21.8	1.9	49.1	21.7	2.1	52.1	18.6	7.6
3	48.9	22.3	2.0	50.1	21.3	2.0	50.6	18.9	7.7
4	48.6	21.2	1.9	48.0	20.3	1.9	55.7	15.0	6.1
5	50.5	22.9	2.0	48.2	18.5	1.8	54.8	19.4	7.9
6	50.4	24.5	2.2	47.8	22.3	2.1	59.5	13.9	5.7
7	54.3	29.8	2.7	50.2	21.2	2.0	60.9	13.3	5.4
8	57.6	26.5	2.4	51.5	22.8	2.2	65.6	20.4	8.3
9	60.5	25.6	2.3	55.3	23.6	2.2	64.5	22.3	9.1
10	63.4	29.7	2.6	56.3	23.8	2.3	62.8	14.5	5.9
11	63.8	26.2	2.3	58.3	22.9	2.2	65.7	22.5	9.2
12	59.6	22.3	2.0	57.2	20.8	2.0	66.9	20.7	8.4
13	56.5	24.1	2.1	54.0	23.0	2.2	65.3	10.1	4.1
14	53.2	21.2	1.9	51.4	20.0	1.9	61.3	13.9	5.7
15	51.3	24.2	2.2	46.8	20.7	2.0	61.0	14.7	6.0
16	48.3	21.2	1.9	44.0	19.4	1.8	57.9	10.0	4.1
17	45.5	20.2	1.8	43.5	28.5	2.7	53.4	15.7	6.4
18	43.6	20.4	1.8	43.0	21.8	2.1	55.0	14.0	5.7
19	42.1	22.4	2.0	41.9	21.6	2.0	60.3	18.4	7.5
20	44.5	21.3	1.9	46.1	23.6	2.2	62.7	16.4	6.7
21	47.7	24.2	2.2	50.8	23.8	2.3	66.2	26.2	10.7
22	49.2	23.6	2.1	50.3	22.7	2.2	63.7	16.3	6.7
23	51.1	24.0	2.1	50.2	24.4	2.3	61.1	26.0	10.6

Table S6: Average PM_{10.0} readings for all households at each hour, stratified by area deprivation index

Hour	Above \$34,999			Between \$15,000-\$34,999			Less than \$15,000			Missing		
	Average Concentration	Standard Deviation	Standard Error	Average Concentration	Standard Deviation	Standard Error	Average Concentration	Standard Deviation	Standard Error	Average Concentration	Standard Deviation	Standard Error
0	11.5	6.8	0.9	39.4	13.7	2.1	31.4	13.8	1.4	26.4	12.1	1.7
1	12.0	5.8	0.7	39.1	14.2	2.2	31.1	13.2	1.4	26.7	11.3	1.6
2	12.1	6.2	0.8	39.1	12.2	1.9	31.0	13.0	1.4	27.8	14.8	2.1
3	11.9	8.6	1.1	37.1	11.3	1.7	32.6	13.5	1.4	26.8	14.2	2.1
4	11.7	5.1	0.6	36.3	11.5	1.8	32.7	14.0	1.5	27.3	12.6	1.8
5	10.8	3.1	0.4	37.0	11.0	1.7	33.7	14.0	1.5	27.6	13.4	1.9
6	10.9	7.2	0.9	37.9	13.1	2.0	34.3	14.6	1.5	25.8	14.3	2.1
7	12.0	7.3	0.9	37.3	11.6	1.8	37.6	16.2	1.7	27.2	14.1	2.0
8	12.5	7.5	1.0	37.5	12.3	1.9	39.0	15.1	1.6	30.8	16.7	2.4
9	12.4	9.5	1.2	38.0	12.1	1.8	41.8	14.4	1.5	33.6	17.1	2.5
10	12.7	11.5	1.5	39.2	11.1	1.7	41.8	14.5	1.5	35.9	16.3	2.4
11	12.9	7.6	1.0	39.5	14.1	2.1	42.1	13.0	1.4	37.6	14.7	2.1
12	12.1	5.5	0.7	39.4	12.2	1.9	39.6	11.3	1.2	35.1	13.4	1.9
13	11.8	4.4	0.6	39.1	12.0	1.8	36.2	11.3	1.2	32.7	15.3	2.2
14	11.5	5.0	0.6	37.7	11.4	1.7	33.6	10.4	1.1	30.0	12.6	1.8
15	11.4	4.4	0.6	35.1	10.7	1.6	30.8	12.4	1.3	28.2	10.6	1.5
16	11.5	5.3	0.7	32.6	10.5	1.6	28.8	10.7	1.1	26.5	11.7	1.7
17	12.1	8.4	1.1	31.6	10.9	1.7	27.0	11.0	1.2	24.7	12.6	1.8
18	11.6	5.1	0.7	31.3	11.8	1.8	26.2	11.3	1.2	23.5	9.8	1.4
19	11.1	5.0	0.6	31.5	11.9	1.8	26.8	12.3	1.3	23.3	13.6	2.0
20	11.4	6.4	0.8	33.3	13.7	2.1	30.3	13.4	1.4	23.5	9.6	1.4
21	11.0	6.3	0.8	37.0	15.2	2.3	33.6	14.8	1.5	23.8	11.9	1.7
22	12.1	7.3	0.9	36.0	14.0	2.1	34.2	14.3	1.5	25.1	13.2	1.9
23	11.9	5.6	0.7	38.3	14.9	2.3	32.5	14.2	1.5	28.1	14.0	2.0

Table S7: Average PM_{1.0} readings for all households at each hour, stratified by household income

Hour	Above \$34,999			Between \$15,000-\$34,999			Less than \$15,000			Missing		
	Average Concentration	Standard Deviation	Standard Error	Average Concentration	Standard Deviation	Standard Error	Average Concentration	Standard Deviation	Standard Error	Average Concentration	Standard Deviation	Standard Error
0	17.9	12.3	1.6	59.4	24.1	3.7	48.5	25.2	2.6	41.5	22.1	3.2
1	19.0	10.7	1.4	58.4	23.5	3.6	47.7	24.6	2.6	42.6	20.7	3.0
2	18.6	11.1	1.4	59.0	21.8	3.3	47.1	23.7	2.5	44.3	25.2	3.6
3	18.1	13.1	1.7	56.2	21.0	3.2	49.5	23.8	2.5	42.6	24.9	3.6
4	17.5	8.1	1.0	54.5	19.6	3.0	49.3	24.3	2.5	42.2	21.5	3.1
5	16.1	4.7	0.6	56.3	18.8	2.9	51.4	25.1	2.6	42.6	23.2	3.4
6	16.2	11.6	1.5	57.5	23.5	3.6	51.9	25.7	2.7	39.8	25.0	3.6
7	18.2	12.6	1.6	57.2	22.4	3.4	57.7	31.5	3.3	41.5	24.5	3.5
8	19.2	13.3	1.7	57.9	23.2	3.5	60.1	26.6	2.8	47.7	30.2	4.4
9	18.9	16.2	2.1	59.3	22.5	3.4	64.3	26.0	2.7	52.6	29.7	4.3
10	19.4	22.0	2.8	61.4	20.0	3.1	64.7	28.8	3.0	56.7	31.6	4.6
11	19.8	13.2	1.7	61.5	27.3	4.2	65.6	25.3	2.6	59.8	27.6	4.0
12	18.3	8.4	1.1	62.3	23.3	3.6	62.1	22.9	2.4	55.4	26.0	3.7
13	18.1	7.8	1.0	62.0	23.2	3.5	57.0	25.8	2.7	52.0	30.7	4.4
14	17.8	8.4	1.1	59.5	21.3	3.3	53.0	22.4	2.3	47.4	26.0	3.8
15	17.7	8.1	1.0	55.5	23.0	3.5	48.6	27.7	2.9	45.6	21.1	3.0
16	18.4	10.1	1.3	50.9	19.9	3.0	45.5	23.4	2.4	42.9	21.7	3.1
17	19.6	21.5	2.7	49.1	26.5	4.0	43.5	24.5	2.6	40.3	24.7	3.6
18	18.5	10.5	1.4	48.7	22.2	3.4	42.7	24.3	2.5	38.5	20.5	3.0
19	17.1	8.7	1.1	47.8	21.2	3.2	42.9	23.4	2.4	37.6	29.9	4.3
20	17.5	10.0	1.3	50.3	24.0	3.7	47.4	24.4	2.5	38.0	24.5	3.5
21	16.7	11.0	1.4	55.4	25.8	3.9	53.3	27.6	2.9	39.0	23.9	3.5
22	18.4	12.3	1.6	53.0	21.8	3.3	54.3	26.5	2.8	40.7	24.8	3.6
23	18.3	8.5	1.1	57.1	25.5	3.9	51.5	27.1	2.8	44.9	28.0	4.0

Table S8: Average PM_{2.5} readings for all households at each hour, stratified by household income

Hour	Above \$34,999			Between \$15,000-\$34,999			Less than \$15,000			Missing		
	Average Concentration	Standard Deviation	Standard Error	Average Concentration	Standard Deviation	Standard Error	Average Concentration	Standard Deviation	Standard Error	Average Concentration	Standard Deviation	Standard Error
0	19.8	13.7	1.8	74.7	33.6	5.1	57.2	29.0	3.0	45.8	24.3	3.5
1	21.1	12.4	1.6	73.2	29.9	4.6	56.3	29.8	3.1	47.3	24.1	3.5
2	20.6	12.8	1.6	72.9	27.1	4.1	55.9	27.5	2.9	49.3	29.4	4.2
3	20.1	14.6	1.9	68.4	25.6	3.9	58.9	28.0	2.9	47.3	28.2	4.1
4	19.4	9.3	1.2	65.9	22.9	3.5	59.0	29.0	3.0	46.2	23.3	3.4
5	17.7	5.3	0.7	67.7	22.2	3.4	61.3	29.5	3.1	46.6	25.3	3.7
6	17.8	12.6	1.6	68.6	26.4	4.0	62.0	29.3	3.1	43.4	27.2	3.9
7	20.1	13.9	1.8	68.0	25.7	3.9	68.4	36.9	3.9	45.4	26.8	3.9
8	21.2	15.0	1.9	68.6	25.8	3.9	71.0	30.4	3.2	52.3	33.7	4.9
9	20.9	18.5	2.4	70.1	25.9	3.9	76.8	30.4	3.2	57.9	32.9	4.8
10	21.6	25.4	3.2	73.0	25.7	3.9	77.6	35.4	3.7	62.7	36.3	5.2
11	21.9	14.7	1.9	73.7	33.1	5.0	78.7	29.0	3.0	66.1	31.4	4.5
12	20.3	9.1	1.2	75.4	30.0	4.6	74.1	25.3	2.7	61.3	30.2	4.4
13	20.1	9.2	1.2	74.9	28.9	4.4	67.6	30.3	3.2	57.6	35.9	5.2
14	19.9	9.3	1.2	72.3	29.9	4.6	63.0	24.6	2.6	53.2	30.1	4.3
15	19.7	9.2	1.2	67.8	30.9	4.7	58.1	32.1	3.4	51.1	24.2	3.5
16	20.6	11.2	1.4	62.4	25.3	3.9	54.3	29.8	3.1	47.8	24.1	3.5
17	22.1	25.1	3.2	60.5	34.6	5.3	51.1	28.5	3.0	44.5	27.7	4.0
18	20.6	12.0	1.5	60.1	26.8	4.1	50.3	28.3	3.0	42.2	22.8	3.3
19	19.0	9.7	1.2	58.5	26.2	4.0	49.9	25.2	2.6	41.4	36.6	5.3
20	19.4	10.8	1.4	62.0	29.3	4.5	56.2	27.7	2.9	42.0	32.2	4.7
21	18.4	12.0	1.5	68.2	31.5	4.8	63.3	32.0	3.4	43.1	28.2	4.1
22	20.3	13.6	1.7	65.7	30.6	4.7	63.8	29.7	3.1	45.1	28.1	4.1
23	20.2	9.1	1.2	71.5	35.4	5.4	60.2	29.7	3.1	49.7	32.9	4.8

Table S9: Average PM_{10.0} readings for all households at each hour, stratified by household income

Hour	Yes			No			Missing		
	Average Concentration	Standard Deviation	Standard Error	Average Concentration	Standard Deviation	Standard Error	Average Concentration	Standard Deviation	Standard Error
0	39.2	15.3	1.6	20.9	9.8	0.9	20.8	10.2	2.6
1	38.4	14.0	1.4	21.3	10.4	0.9	20.7	10.9	2.7
2	38.8	14.0	1.4	21.2	10.2	0.9	21.9	11.7	2.9
3	39.1	13.8	1.4	20.8	11.0	1.0	22.7	11.1	2.8
4	39.4	14.5	1.5	20.5	9.3	0.8	21.9	9.8	2.5
5	40.1	14.7	1.5	20.7	8.9	0.8	21.3	9.0	2.3
6	41.3	16.1	1.7	20.1	10.2	0.9	22.6	10.1	2.5
7	44.2	16.2	1.7	20.6	10.7	0.9	25.2	11.7	2.9
8	47.0	15.4	1.6	21.0	11.1	1.0	25.1	16.1	4.0
9	50.0	16.1	1.7	21.6	11.5	1.0	26.9	10.4	2.6
10	51.3	17.2	1.8	21.7	10.2	0.9	29.3	11.0	2.7
11	53.0	15.3	1.6	21.7	10.4	0.9	27.0	8.2	2.1
12	50.3	13.6	1.4	21.2	8.8	0.8	23.4	5.6	1.4
13	46.8	13.3	1.4	20.8	9.7	0.8	19.5	4.3	1.1
14	43.8	13.1	1.3	19.8	7.7	0.7	17.8	4.7	1.2
15	41.1	13.7	1.4	18.2	7.6	0.7	18.4	4.3	1.1
16	38.9	13.5	1.4	17.1	6.7	0.6	16.9	3.6	0.9
17	37.5	14.3	1.5	16.3	7.7	0.7	16.0	4.9	1.2
18	36.6	13.1	1.3	15.5	6.9	0.6	17.5	10.4	2.6
19	37.0	14.5	1.5	15.3	8.0	0.7	18.6	9.9	2.5
20	39.2	14.7	1.5	16.9	9.2	0.8	20.6	9.6	2.4
21	41.4	16.6	1.7	18.8	9.8	0.8	21.9	12.3	3.1
22	41.2	15.3	1.6	19.7	10.7	0.9	22.4	11.9	3.0
23	40.9	16.1	1.6	20.5	10.5	0.9	22.3	9.5	2.4

Table S10: Average PM_{1.0} readings for all households at each hour, stratified by smoking status

Hour	Yes			No			Missing		
	Average Concentration	Standard Deviation	Standard Error	Average Concentration	Standard Deviation	Standard Error	Average Concentration	Standard Deviation	Standard Error
0	64.1	29.0	3.0	30.4	16.4	1.4	34.0	18.0	4.5
1	63.1	27.0	2.8	30.7	16.7	1.4	33.8	19.3	4.8
2	63.5	26.3	2.7	30.4	16.8	1.5	35.9	22.2	5.5
3	63.3	25.0	2.6	30.1	18.5	1.6	36.7	19.6	4.9
4	62.8	25.3	2.6	29.5	15.4	1.3	34.6	19.1	4.8
5	64.1	25.8	2.6	30.5	15.7	1.4	33.5	18.2	4.5
6	65.5	28.8	3.0	29.5	17.2	1.5	35.2	19.1	4.8
7	70.1	28.8	3.0	31.0	21.8	1.9	38.7	24.2	6.1
8	74.8	28.1	2.9	31.9	19.5	1.7	38.0	30.7	7.7
9	80.1	29.0	3.0	32.7	19.9	1.7	41.3	21.8	5.5
10	83.7	35.2	3.6	32.4	17.5	1.5	45.3	21.0	5.3
11	87.3	29.8	3.1	32.0	19.5	1.7	42.3	16.4	4.1
12	83.8	27.1	2.8	31.2	16.4	1.4	37.7	12.8	3.2
13	78.6	29.2	3.0	30.5	18.4	1.6	33.9	17.1	4.3
14	73.8	27.5	2.8	29.0	14.1	1.2	30.5	13.6	3.4
15	69.5	29.7	3.1	26.7	16.2	1.4	31.1	14.1	3.5
16	65.3	27.5	2.8	25.4	12.9	1.1	28.0	14.6	3.6
17	63.2	32.1	3.3	24.6	18.4	1.6	26.1	15.8	3.9
18	62.8	27.5	2.8	23.0	14.3	1.2	28.1	18.7	4.7
19	62.6	29.8	3.1	22.2	13.8	1.2	28.6	16.1	4.0
20	65.2	29.5	3.0	24.4	14.9	1.3	30.5	17.8	4.5
21	68.9	31.9	3.3	27.9	16.4	1.4	31.0	21.0	5.2
22	68.4	28.8	3.0	28.8	17.4	1.5	32.5	19.1	4.8
23	67.9	31.7	3.3	29.9	17.4	1.5	34.2	17.4	4.3

Table S11: Average PM_{2.5} readings for all households at each hour, stratified by smoking status

Hour	Yes			No			Missing		
	Average Reading	Standard Deviation	Standard Error	Average Reading	Standard Deviation	Standard Error	Average Reading	Standard Deviation	Standard Error
0	71.1	33.1	3.4	38.2	22.7	2.0	38.6	18.7	4.7
1	70.1	31.6	3.2	38.6	22.1	1.9	37.9	20.0	5.0
2	70.5	30.2	3.1	38.1	20.9	1.8	40.0	26.5	6.6
3	71.0	29.4	3.0	36.9	22.0	1.9	41.2	21.0	5.2
4	70.4	29.5	3.0	35.9	18.0	1.6	39.6	22.6	5.6
5	71.6	29.7	3.0	36.9	18.7	1.6	38.7	19.1	4.8
6	73.6	32.4	3.3	35.3	19.6	1.7	41.0	19.6	4.9
7	78.5	32.1	3.3	37.0	26.4	2.3	45.5	24.7	6.2
8	83.5	31.6	3.2	38.1	22.7	2.0	44.9	30.8	7.7
9	89.8	33.0	3.4	39.3	23.6	2.1	48.7	21.0	5.2
10	94.0	42.3	4.3	39.3	21.9	1.9	53.6	22.0	5.5
11	97.5	33.9	3.5	39.5	23.5	2.0	50.0	17.8	4.5
12	93.1	30.3	3.1	38.9	21.1	1.8	43.4	11.7	2.9
13	86.5	33.5	3.4	38.5	23.9	2.1	36.4	9.7	2.4
14	81.3	31.0	3.2	36.8	19.8	1.7	33.3	10.1	2.5
15	77.3	34.9	3.6	33.7	20.8	1.8	35.3	10.8	2.7
16	72.7	33.7	3.5	31.8	16.9	1.5	32.7	7.6	1.9
17	70.3	39.2	4.0	30.5	21.8	1.9	30.5	11.1	2.8
18	70.1	31.9	3.3	28.4	17.4	1.5	32.9	16.7	4.2
19	69.2	34.7	3.6	27.1	15.9	1.4	34.0	18.1	4.5
20	73.1	35.1	3.6	29.8	17.9	1.6	38.3	21.5	5.4
21	77.6	37.0	3.8	33.6	19.5	1.7	40.3	25.8	6.4
22	76.2	32.6	3.3	35.2	22.6	2.0	40.4	23.0	5.7
23	75.1	35.6	3.7	37.1	23.7	2.1	40.8	19.4	4.9

Table S12: Average PM_{10.0} readings for all households at each hour, stratified by smoking status

Hour	Black/African American			Non-Black/African American			Missing		
	Average Concentration	Standard Deviation	Standard Error	Average Concentration	Standard Deviation	Standard Error	Average Concentration	Standard Deviation	Standard Error
0	23.1	10.5	1.0	12.9	7.0	1.2	16.7	6.4	2.8
1	23.6	11.3	1.1	13.2	6.6	1.1	14.2	4.7	2.1
2	23.5	10.6	1.0	13.8	9.3	1.6	15.0	10.8	4.8
3	23.2	11.4	1.1	13.2	8.8	1.5	15.2	12.8	5.7
4	22.9	9.9	1.0	12.4	7.3	1.2	16.4	6.8	3.0
5	23.4	9.7	0.9	11.1	3.0	0.5	18.1	8.6	3.9
6	22.8	10.3	1.0	11.5	9.3	1.6	16.7	10.6	4.8
7	22.6	10.9	1.0	14.9	10.8	1.8	23.1	10.6	4.8
8	22.8	11.3	1.1	15.7	10.5	1.8	24.2	22.0	9.8
9	23.7	11.9	1.1	15.3	8.9	1.5	26.6	11.6	5.2
10	24.5	10.5	1.0	14.1	8.7	1.5	26.2	11.9	5.3
11	24.6	10.7	1.0	13.6	8.3	1.4	20.7	6.8	3.0
12	23.5	8.5	0.8	13.9	9.1	1.5	18.4	4.0	1.8
13	22.6	10.0	1.0	14.2	6.7	1.1	15.7	4.0	1.8
14	21.4	7.7	0.7	13.8	6.5	1.1	14.9	3.6	1.6
15	19.7	7.9	0.8	13.3	4.7	0.8	13.3	2.8	1.2
16	18.2	6.6	0.6	13.7	6.4	1.1	11.3	1.7	0.7
17	17.3	7.2	0.7	13.6	9.2	1.5	9.3	1.5	0.7
18	16.5	7.7	0.7	13.6	6.3	1.1	9.7	2.9	1.3
19	16.7	8.5	0.8	12.1	6.0	1.0	12.3	11.2	5.0
20	18.7	9.8	0.9	11.7	6.4	1.1	18.1	6.0	2.7
21	21.0	10.9	1.0	11.8	4.5	0.8	19.3	9.4	4.2
22	21.9	11.6	1.1	12.4	6.9	1.2	19.9	10.3	4.6
23	22.7	11.3	1.1	13.3	6.1	1.0	19.6	6.6	3.0

Table S13: Average PM_{1.0} readings for all households excluding smokers at each hour, stratified by race

Hour	Black/African American			Non-Black/African American			Missing		
	Average Concentration	Standard Deviation	Standard Error	Average Concentration	Standard Deviation	Standard Error	Average Concentration	Standard Deviation	Standard Error
0	33.5	17.8	1.7	20.3	10.8	1.8	26.5	10.2	4.6
1	34.0	18.3	1.8	20.3	10.9	1.8	22.4	7.2	3.2
2	33.7	17.7	1.7	21.2	16.2	2.7	23.5	18.3	8.2
3	33.6	19.3	1.8	20.2	15.0	2.5	23.9	20.6	9.2
4	32.9	16.7	1.6	18.7	12.0	2.0	25.8	11.9	5.3
5	34.3	17.5	1.7	16.7	5.4	0.9	28.7	15.1	6.8
6	33.4	17.8	1.7	17.4	15.7	2.7	26.0	15.9	7.1
7	33.7	22.9	2.2	23.2	19.4	3.3	34.6	17.2	7.7
8	34.3	20.6	2.0	24.5	18.8	3.2	37.1	35.7	16.0
9	35.7	20.8	2.0	23.8	16.8	2.8	41.7	20.4	9.1
10	36.4	18.3	1.8	21.9	15.5	2.6	41.7	20.7	9.3
11	36.0	20.3	1.9	21.3	15.3	2.6	32.9	10.6	4.7
12	34.5	15.7	1.5	22.0	18.3	3.1	29.1	6.6	3.0
13	33.1	19.5	1.9	23.0	13.6	2.3	25.2	7.9	3.5
14	31.0	14.8	1.4	22.4	11.7	2.0	23.8	5.9	2.6
15	28.7	17.5	1.7	21.5	9.1	1.5	21.0	5.4	2.4
16	26.7	13.3	1.3	22.5	13.0	2.2	17.5	2.7	1.2
17	25.7	15.8	1.5	22.7	26.5	4.5	14.3	2.4	1.1
18	24.2	15.4	1.5	22.0	13.3	2.3	15.4	5.7	2.6
19	24.0	14.5	1.4	18.7	10.6	1.8	19.6	18.7	8.4
20	26.7	16.1	1.5	17.9	10.8	1.8	29.2	10.7	4.8
21	30.6	18.4	1.8	18.2	7.7	1.3	30.7	15.4	6.9
22	31.5	18.5	1.8	19.3	12.1	2.1	31.9	17.6	7.9
23	32.7	18.7	1.8	20.9	10.9	1.8	31.1	11.0	4.9

Table S14: Average PM_{2.5} readings for all households excluding smokers at each hour, stratified by race

Hour	Black/African American			Non-Black/African American			Missing		
	Average Concentration	Standard Deviation	Standard Error	Average Concentration	Standard Deviation	Standard Error	Average Concentration	Standard Deviation	Standard Error
0	42.7	24.4	2.3	22.2	11.6	2.0	30.1	11.2	5.0
1	43.3	23.9	2.3	22.3	12.1	2.0	25.3	7.6	3.4
2	42.6	22.2	2.1	23.3	18.3	3.1	26.8	21.3	9.5
3	41.6	22.8	2.2	22.3	17.3	2.9	26.8	22.0	9.9
4	40.6	19.7	1.9	20.5	13.7	2.3	28.5	12.9	5.8
5	42.1	20.5	2.0	18.4	6.6	1.1	31.6	16.5	7.4
6	40.5	20.1	1.9	19.1	17.2	2.9	28.6	17.0	7.6
7	41.0	27.6	2.7	25.6	21.9	3.7	37.8	18.5	8.3
8	41.8	23.5	2.3	27.0	21.1	3.6	40.8	38.4	17.2
9	43.7	24.2	2.3	26.2	19.8	3.3	46.2	22.2	9.9
10	44.9	22.9	2.2	24.2	17.2	2.9	45.7	22.5	10.0
11	45.1	24.6	2.4	23.5	17.0	2.9	36.6	11.4	5.1
12	43.6	20.2	1.9	24.3	21.8	3.7	32.7	7.9	3.5
13	42.0	24.7	2.4	25.6	15.8	2.7	28.4	8.9	4.0
14	39.8	20.6	2.0	25.0	13.2	2.2	26.9	6.7	3.0
15	36.9	22.1	2.1	23.8	10.1	1.7	23.6	6.0	2.7
16	34.2	16.9	1.6	24.9	14.5	2.5	19.5	3.3	1.5
17	32.5	18.0	1.7	25.1	30.7	5.2	15.9	2.7	1.2
18	30.6	18.1	1.7	24.1	14.9	2.5	17.1	6.1	2.7
19	30.0	16.9	1.6	20.4	11.6	2.0	22.1	20.3	9.1
20	33.5	19.6	1.9	19.4	12.1	2.0	33.4	12.1	5.4
21	38.1	22.1	2.1	19.8	8.7	1.5	35.1	17.4	7.8
22	39.5	24.3	2.3	21.0	13.4	2.3	36.8	20.4	9.1
23	41.4	25.5	2.5	22.8	12.3	2.1	35.3	12.1	5.4

Table S15: Average PM_{10.0} readings for all households excluding smokers at each hour, stratified by race

Hour	More Deprived			Less Deprived			Missing		
	Average Concentration	Standard Deviation	Standard Error	Average Concentration	Standard Deviation	Standard Error	Average Concentration	Standard Deviation	Standard Error
0	18.8	16.8	2.1	22.9	16.5	2.3	20.8	17.2	3.2
1	19.2	15.1	1.8	22.6	17.3	2.4	22.0	19.7	3.7
2	19.0	15.5	1.9	22.4	17.6	2.4	22.7	20.4	3.9
3	19.2	17.8	2.2	21.6	18.4	2.5	22.3	21.1	4.0
4	20.1	17.3	2.1	21.1	15.0	2.1	21.0	16.3	3.1
5	21.2	16.7	2.0	20.2	14.9	2.0	21.1	17.2	3.3
6	20.9	17.7	2.2	20.0	17.0	2.3	20.1	19.4	3.7
7	20.7	26.7	3.3	20.1	16.1	2.2	22.9	23.5	4.4
8	19.9	21.8	2.7	20.6	18.5	2.5	24.8	23.9	4.5
9	21.0	20.2	2.5	19.9	16.8	2.3	27.0	24.6	4.6
10	22.0	17.0	2.1	19.7	16.7	2.3	27.2	21.4	4.0
11	22.2	24.0	2.9	19.2	15.3	2.1	27.5	18.1	3.4
12	21.8	19.0	2.3	18.3	13.7	1.9	25.6	15.2	2.9
13	20.7	15.2	1.9	18.5	26.6	3.7	24.0	14.3	2.7
14	19.8	14.2	1.7	18.0	16.2	2.2	22.5	11.7	2.2
15	20.0	19.5	2.4	15.7	14.7	2.0	19.5	9.6	1.8
16	19.2	15.8	1.9	14.8	12.5	1.7	17.2	7.4	1.4
17	18.4	14.6	1.8	14.5	22.9	3.2	15.9	11.7	2.2
18	17.7	15.2	1.9	14.4	16.3	2.2	14.9	11.2	2.1
19	16.4	13.0	1.6	15.1	15.0	2.1	15.5	14.2	2.7
20	16.4	14.5	1.8	18.3	17.1	2.4	17.2	13.2	2.5
21	17.7	16.0	2.0	20.4	18.2	2.5	19.4	16.1	3.0
22	18.6	16.7	2.0	20.6	17.9	2.5	21.0	18.6	3.5
23	18.2	13.4	1.6	22.7	20.0	2.7	21.4	19.0	3.6

Table S16: Average PM_{1.0} readings for all households excluding smokers at each hour, stratified by area deprivation index

Hour	More Deprived			Less Deprived			Missing		
	Average Concentration	Standard Deviation	Standard Error	Average Concentration	Standard Deviation	Standard Error	Average Concentration	Standard Deviation	Standard Error
0	29.8	16.6	2.0	32.6	16.3	2.2	29.3	16.9	3.1
1	30.3	15.0	1.8	31.9	17.1	2.3	30.8	19.3	3.6
2	30.0	15.4	1.9	31.6	17.3	2.4	31.3	20.2	3.7
3	30.2	17.6	2.2	30.6	18.1	2.5	31.5	20.8	3.9
4	31.5	17.1	2.1	29.4	14.8	2.0	29.1	16.0	3.0
5	33.6	16.6	2.0	28.7	14.7	2.0	29.8	17.0	3.1
6	32.7	17.5	2.1	28.8	16.7	2.3	28.3	19.1	3.5
7	32.9	26.4	3.2	29.6	16.1	2.2	33.1	23.1	4.3
8	31.4	21.5	2.6	31.1	18.2	2.5	36.2	23.5	4.4
9	33.1	20.0	2.4	30.1	16.5	2.3	39.3	24.2	4.5
10	34.9	16.8	2.1	29.3	16.4	2.3	38.5	21.1	3.9
11	35.2	23.7	2.9	27.9	15.2	2.1	38.5	17.9	3.3
12	34.9	18.9	2.3	26.9	13.6	1.9	35.1	15.0	2.8
13	33.9	16.1	2.0	27.5	26.2	3.6	32.1	14.9	2.8
14	32.3	14.1	1.7	26.5	16.1	2.2	29.4	12.3	2.3
15	33.3	19.8	2.4	22.6	14.9	2.0	25.1	10.9	2.0
16	32.4	15.8	1.9	21.4	12.7	1.7	22.2	8.4	1.6
17	30.9	14.6	1.8	21.0	22.6	3.1	21.5	15.2	2.8
18	29.2	15.2	1.9	20.6	16.0	2.2	19.9	12.3	2.3
19	25.9	12.9	1.6	21.2	14.7	2.0	21.1	14.6	2.7
20	24.9	14.4	1.8	26.3	16.9	2.3	23.7	13.4	2.5
21	26.5	15.9	1.9	29.8	17.9	2.5	28.5	16.8	3.1
22	27.9	16.5	2.0	29.6	17.6	2.4	30.6	18.9	3.5
23	27.8	13.3	1.6	32.5	19.7	2.7	30.8	18.8	3.5

Table S17: Average PM_{2.5} readings for all households excluding smokers at each hour, stratified by area deprivation index

Hour	More Deprived			Less Deprived			Missing		
	Average Concentration	Standard Deviation	Standard Error	Average Concentration	Standard Deviation	Standard Error	Average Concentration	Standard Deviation	Standard Error
0	33.7	16.8	2.1	42.7	16.5	2.3	38.0	17.2	3.2
1	34.0	15.1	1.8	41.9	17.3	2.4	39.9	19.7	3.7
2	33.6	15.5	1.9	40.6	17.6	2.4	41.1	20.4	3.9
3	33.9	17.8	2.2	38.4	18.4	2.5	40.4	21.1	4.0
4	35.7	17.3	2.1	36.0	15.0	2.1	37.8	16.3	3.1
5	38.1	16.7	2.0	35.0	14.9	2.0	38.6	17.2	3.3
6	37.1	17.7	2.2	34.5	17.0	2.3	36.1	19.4	3.7
7	37.9	26.7	3.3	35.2	16.1	2.2	41.4	23.5	4.4
8	36.2	21.8	2.7	37.0	18.5	2.5	45.0	23.9	4.5
9	38.1	20.2	2.5	35.6	16.8	2.3	50.1	24.6	4.6
10	40.2	17.0	2.1	34.8	16.7	2.3	50.2	21.4	4.0
11	40.4	24.0	2.9	33.7	15.3	2.1	51.4	18.1	3.4
12	39.8	19.0	2.3	33.4	13.7	1.9	47.6	15.2	2.9
13	37.9	15.2	1.9	35.0	26.6	3.7	44.2	14.3	2.7
14	36.4	14.2	1.7	34.0	16.2	2.2	41.2	11.7	2.2
15	37.8	19.5	2.4	29.1	14.7	2.0	35.4	9.6	1.8
16	36.9	15.8	1.9	27.5	12.5	1.7	30.9	7.4	1.4
17	35.3	14.6	1.8	27.1	22.9	3.2	28.4	11.7	2.2
18	33.3	15.2	1.9	26.2	16.3	2.2	26.5	11.2	2.1
19	29.4	13.0	1.6	26.5	15.0	2.1	27.6	14.2	2.7
20	29.0	14.5	1.8	32.5	17.1	2.4	30.8	13.2	2.5
21	31.1	16.0	2.0	36.4	18.2	2.5	35.9	16.1	3.0
22	32.1	16.7	2.0	37.2	17.9	2.5	38.8	18.6	3.5
23	31.8	13.4	1.6	41.6	20.0	2.7	39.6	19.0	3.6

Table S18: Average PM_{10.0} readings for all households excluding smokers at each hour, stratified by area deprivation index

Hour	Above \$34,999			Between \$15,000-\$34,999			Less than \$15,000			Missing		
	Average Concentration	Standard Deviation	Standard Error	Average Concentration	Standard Deviation	Standard Error	Average Concentration	Standard Deviation	Standard Error	Average Concentration	Standard Deviation	Standard Error
0	10.9	5.5	0.8	34.4	12.5	2.7	26.3	12.1	1.8	15.2	7.1	1.3
1	11.2	5.7	0.8	35.0	13.2	2.8	27.6	12.9	1.9	14.1	7.9	1.5
2	11.5	6.0	0.8	35.0	11.5	2.5	27.6	11.9	1.8	13.7	12.6	2.3
3	11.4	8.6	1.2	31.9	9.5	2.0	29.5	13.3	2.0	13.7	13.4	2.5
4	11.3	5.1	0.7	29.9	10.7	2.3	30.1	12.6	1.9	13.9	7.5	1.4
5	10.7	3.0	0.4	31.2	9.9	2.1	30.6	12.8	1.9	13.7	6.6	1.2
6	10.8	7.2	1.0	31.2	10.9	2.3	29.4	13.0	1.9	12.2	8.0	1.5
7	12.2	7.4	1.0	29.3	9.0	1.9	31.6	15.9	2.4	13.7	9.2	1.7
8	12.8	7.6	1.1	28.0	9.7	2.1	33.3	15.7	2.3	14.3	14.4	2.7
9	12.4	8.4	1.2	28.0	9.3	2.0	35.5	14.6	2.2	16.4	13.5	2.5
10	12.4	8.5	1.2	29.3	10.0	2.1	35.1	12.6	1.9	17.7	9.4	1.8
11	11.8	5.7	0.8	30.0	13.0	2.8	34.9	11.4	1.7	16.6	9.9	1.8
12	11.5	5.3	0.7	30.6	10.3	2.2	31.7	9.8	1.5	15.8	8.3	1.5
13	11.3	4.1	0.6	30.0	10.5	2.2	29.8	10.5	1.6	15.0	13.2	2.4
14	11.2	4.4	0.6	27.7	9.9	2.1	28.0	8.0	1.2	15.1	7.0	1.3
15	10.7	2.6	0.4	25.3	8.5	1.8	25.8	10.2	1.5	14.0	7.4	1.4
16	10.5	3.7	0.5	23.1	8.6	1.8	23.9	7.2	1.1	13.0	6.2	1.1
17	10.6	7.0	1.0	22.3	7.5	1.6	22.1	9.5	1.4	12.0	3.6	0.7
18	10.4	3.8	0.5	21.7	9.3	2.0	20.4	9.6	1.4	12.2	5.8	1.1
19	10.1	4.1	0.6	21.6	8.9	1.9	20.2	9.8	1.5	13.0	10.9	2.0
20	10.4	5.6	0.8	24.4	12.2	2.6	22.6	10.3	1.5	14.5	7.5	1.4
21	10.3	5.3	0.7	29.8	14.0	3.0	24.5	10.0	1.5	15.5	9.4	1.7
22	11.4	6.4	0.9	30.0	14.6	3.1	25.5	12.2	1.8	16.4	7.6	1.4
23	11.5	5.7	0.8	33.2	13.5	2.9	25.0	12.5	1.9	16.5	7.9	1.5

Table S19: Average PM_{1.0} readings for all households excluding smokers at each hour, stratified by household income

Hour	Above \$34,999			Between \$15,000-\$34,999			Less than \$15,000			Missing		
	Average Concentration	Standard Deviation	Standard Error	Average Concentration	Standard Deviation	Standard Error	Average Concentration	Standard Deviation	Standard Error	Average Concentration	Standard Deviation	Standard Error
0	16.6	8.4	1.2	47.7	20.2	4.3	38.5	21.0	3.1	22.8	12.2	2.3
1	17.0	9.0	1.3	48.3	20.8	4.4	39.7	20.6	3.0	21.3	14.6	2.7
2	17.3	10.1	1.4	48.9	20.0	4.3	38.9	21.4	3.2	20.2	16.9	3.1
3	17.1	12.7	1.8	44.6	17.5	3.7	42.9	23.9	3.5	20.2	20.5	3.8
4	16.8	8.0	1.1	41.4	16.9	3.6	43.7	22.7	3.3	20.1	10.6	2.0
5	15.8	4.4	0.6	44.1	16.0	3.4	45.1	24.7	3.6	20.8	11.0	2.0
6	16.2	11.7	1.6	43.9	18.4	3.9	43.6	23.2	3.4	18.0	12.8	2.4
7	18.4	12.8	1.8	41.5	16.9	3.6	48.6	35.7	5.3	20.0	15.3	2.8
8	19.6	13.5	1.9	39.7	18.5	4.0	51.7	28.2	4.2	21.1	23.8	4.4
9	18.9	14.8	2.1	40.1	16.5	3.5	54.2	26.3	3.9	25.2	22.5	4.2
10	18.8	13.8	1.9	41.9	16.9	3.6	52.1	23.6	3.5	27.1	15.9	3.0
11	17.9	8.8	1.2	42.6	25.1	5.4	51.1	22.8	3.4	25.3	17.0	3.1
12	17.4	7.9	1.1	44.3	17.9	3.8	45.4	19.6	2.9	24.6	19.1	3.6
13	17.3	7.3	1.0	43.5	19.3	4.1	42.7	21.3	3.1	23.5	27.0	5.0
14	17.2	7.3	1.0	39.7	15.6	3.3	39.8	18.5	2.7	22.9	14.2	2.6
15	16.4	4.1	0.6	36.2	15.1	3.2	37.4	26.1	3.8	21.2	12.9	2.4
16	16.4	6.9	1.0	32.8	14.6	3.1	35.4	17.5	2.6	20.1	12.3	2.3
17	16.8	20.0	2.8	31.2	14.3	3.1	34.0	22.4	3.3	18.5	5.9	1.1
18	16.3	8.4	1.2	30.0	14.7	3.1	30.7	22.3	3.3	18.7	10.0	1.9
19	15.3	6.9	1.0	29.1	13.2	2.8	29.6	19.0	2.8	19.4	17.5	3.3
20	15.7	8.0	1.1	32.9	19.2	4.1	32.9	18.7	2.8	21.7	11.6	2.2
21	15.5	8.3	1.1	40.5	21.4	4.6	37.0	19.8	2.9	23.7	15.5	2.9
22	17.1	9.4	1.3	40.4	20.6	4.4	37.8	23.0	3.4	25.4	13.3	2.5
23	17.4	8.6	1.2	45.2	19.6	4.2	37.3	24.0	3.5	24.8	13.1	2.4

Table S20: Average PM_{2.5} readings for all households excluding smokers at each hour, stratified by household income

Hour	Above \$34,999			Between \$15,000-\$34,999			Less than \$15,000			Missing		
	Average Concentration	Standard Deviation	Standard Error	Average Concentration	Standard Deviation	Standard Error	Average Concentration	Standard Deviation	Standard Error	Average Concentration	Standard Deviation	Standard Error
0	18.4	9.0	1.3	65.0	32.8	7.0	49.6	24.4	3.6	26.1	14.1	2.6
1	18.8	10.0	1.4	65.5	29.3	6.3	51.1	25.1	3.7	24.4	18.9	3.5
2	19.2	11.6	1.6	64.6	26.5	5.7	50.8	25.2	3.8	23.5	21.2	3.9
3	18.9	14.0	1.9	57.8	23.2	4.9	54.4	27.0	4.0	23.5	23.8	4.4
4	18.6	9.2	1.3	53.2	20.8	4.4	55.8	26.4	3.9	22.7	11.7	2.2
5	17.4	4.8	0.7	55.9	19.6	4.2	57.6	28.9	4.3	23.6	12.4	2.3
6	17.8	12.8	1.8	54.8	20.5	4.4	55.0	26.7	4.0	20.4	14.4	2.7
7	20.4	14.2	2.0	51.9	19.5	4.2	61.4	44.0	6.6	22.4	17.4	3.2
8	21.7	15.2	2.1	49.3	20.5	4.4	65.5	32.9	4.9	23.4	26.0	4.8
9	21.0	17.1	2.4	49.5	19.4	4.1	70.0	31.0	4.6	28.1	25.4	4.7
10	21.0	15.0	2.1	52.2	24.3	5.2	68.5	28.5	4.2	29.9	17.2	3.2
11	19.9	9.7	1.3	53.8	31.6	6.7	68.6	27.3	4.1	28.0	18.4	3.4
12	19.3	8.6	1.2	56.5	25.6	5.5	62.1	23.3	3.5	27.3	23.5	4.4
13	19.3	8.7	1.2	55.4	25.9	5.5	59.1	27.8	4.2	26.2	30.8	5.7
14	19.2	8.2	1.1	51.5	26.9	5.7	55.5	21.9	3.3	26.0	16.3	3.0
15	18.2	4.6	0.6	47.4	23.4	5.0	51.5	30.9	4.6	23.7	14.2	2.6
16	18.3	7.7	1.1	43.7	20.6	4.4	47.6	21.0	3.1	22.3	14.0	2.6
17	18.9	23.6	3.3	41.6	17.7	3.8	44.1	24.3	3.6	20.5	7.0	1.3
18	18.2	9.6	1.3	39.9	18.3	3.9	39.8	26.2	3.9	20.8	11.1	2.1
19	17.1	7.6	1.1	38.6	18.3	3.9	38.0	20.4	3.0	21.5	19.1	3.6
20	17.4	8.5	1.2	44.2	25.3	5.4	42.2	21.2	3.2	24.3	14.0	2.6
21	17.1	8.9	1.2	53.5	28.0	6.0	46.7	22.3	3.3	26.8	17.7	3.3
22	18.8	10.0	1.4	54.2	32.0	6.8	47.8	26.0	3.9	28.7	15.1	2.8
23	19.3	9.1	1.3	61.0	32.1	6.8	47.9	29.0	4.3	28.3	14.5	2.7

Table S21: Average PM_{10.0} readings for all households excluding smokers at each hour, stratified by household income