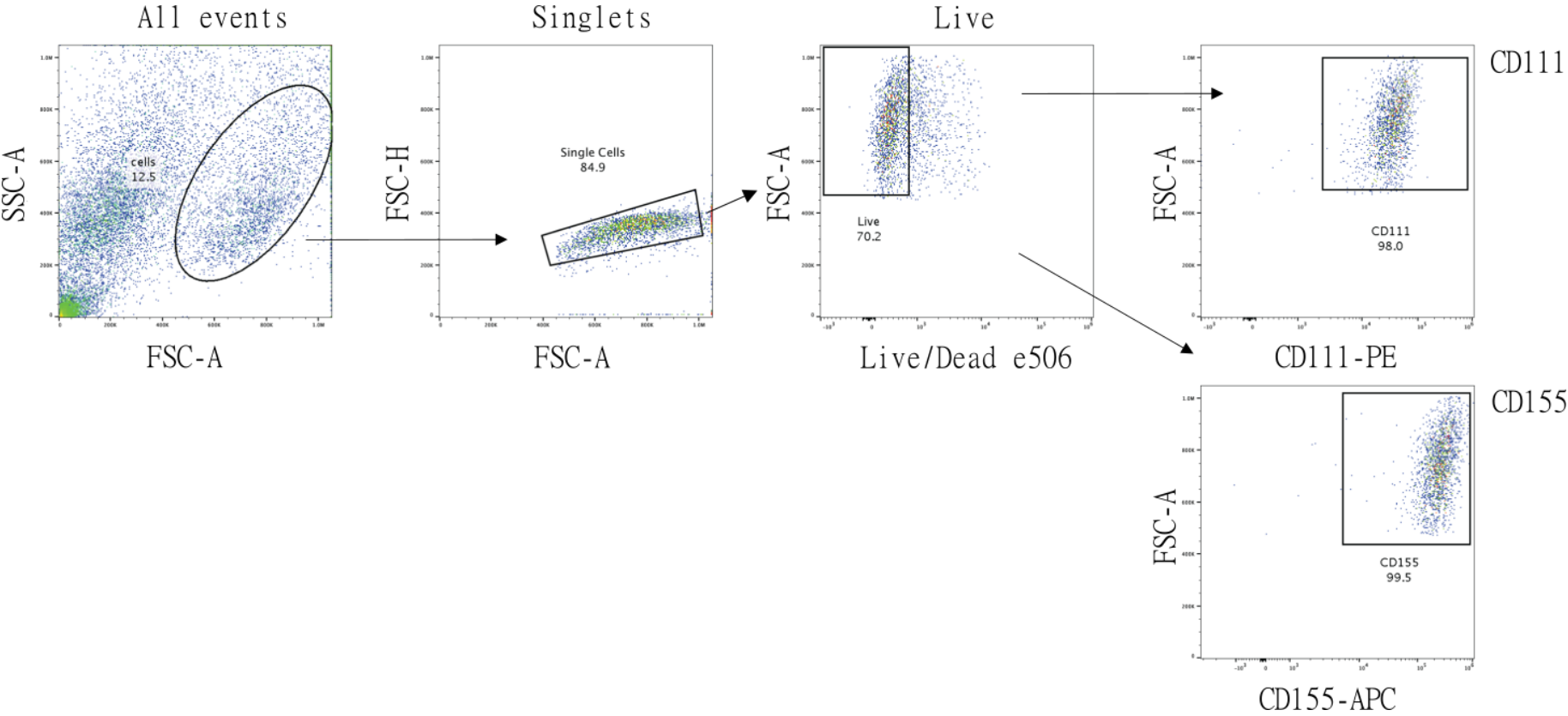


**Figure S1.**



**Gating strategy for determining CD111 and CD155 expression.**

**Table S1. List of significant enriched hallmark pathways**

See separate Excel file

**Table S2. List of significantly depleted hallmark pathways**

See separate Excel file

**Table S3. List of all differently expressed genes by treatment**

See separate Excel file

**Table S4. Top 50 differentially expressed genes in < 1 vs > year overall survival**

<b>Name</b>	<b>Change</b>	<b>Fold change (log2)</b>	<b>Significance</b>	<b>Manhattan distance</b>
ACCSL	Decreased	-2.331892243	5.203818239	7.535710482
ADAMTS20	Decreased	-3.060481519	7.130585716	10.19106724
ALPG	Decreased	-4.635082463	5.06043698	9.695519443
ANXA13	Decreased	-1.675458763	6.908519193	8.583977956
ARSI	Increased	2.063832753	6.917745113	8.981577866
ASZ1	Decreased	-2.681904629	4.469088892	7.150993521
BEND4	Decreased	-2.992152582	6.167075016	9.159227598
C1QL1	Decreased	-2.059681221	7.543603599	9.60328482
C9	Decreased	-2.678812926	6.779868813	9.458681739
CAPZA3	Decreased	-3.534574002	3.729332705	7.263906707
CD209	Decreased	-1.837791027	5.102471175	6.940262202
CDKN2A	Decreased	-2.848594796	8.728627324	11.57722212
CHAT	Decreased	-3.378232556	7.472526209	10.85075877
CRYBG2	Decreased	-2.836744502	5.677337734	8.514082236
CYP19A1	Decreased	-1.745814738	6.00137496	7.747189698
DDC	Decreased	-3.072232264	5.251228534	8.323460798
DSG1	Decreased	-2.401503953	4.560279908	6.961783861
FAM9A	Decreased	-4.34547967	3.42119386	7.76667353
G6PC1	Decreased	-3.137664197	6.15821199	9.295876187
HEPACAM2	Decreased	-2.285687366	6.471050648	8.756738014
HMCN2	Decreased	-2.744933822	10.36257034	13.10750416
IGHV5-51	Decreased	-3.538396743	4.538161838	8.076558581
KCNK3	Decreased	-1.825087027	5.430402492	7.255489519
KLRC2	Decreased	-3.640829449	9.375567974	13.01639742
KLRC3	Decreased	-2.966853174	9.650065588	12.61691876
KLRK1	Decreased	-1.892058417	8.596614127	10.48867254
LCN2	Decreased	-3.493005835	5.796395979	9.289401814
MMP3	Decreased	-3.66682198	8.942056966	12.60873916
MSLN	Decreased	-1.913996652	5.041916482	6.955913134
MUC2	Decreased	-3.545198632	8.971659645	12.51685828
MUC5AC	Decreased	-2.678841185	6.078800115	8.7576413
MYOD1	Decreased	-3.094546033	6.172298829	9.266844862
NPSR1	Decreased	-2.326021261	5.107768757	7.433790018

NR1H4	Decreased	-2.52477496	4.709922066	7.234697026
OR4K2	Decreased	-3.896561977	4.234597629	8.131159606
PAX5	Decreased	-2.773646759	5.733294219	8.506940978
PI3	Decreased	-2.997652952	4.702397234	7.700050186
PIK3C2G	Decreased	-2.98009155	9.301969065	12.28206062
PLA2R1	Increased	1.947031285	6.711796781	8.658828066
PLCZ1	Decreased	-2.921814425	5.400716723	8.322531148
PLEKHS1	Decreased	-2.057536553	4.92146033	6.978996883
RANBP17	Decreased	-1.892476871	6.537165167	8.429642038
SCNN1B	Decreased	-2.220333545	5.298929268	7.519262813
SFTPA1	Decreased	-1.989557276	4.934097335	6.923654611
SLC18A3	Decreased	-3.269614621	5.577134671	8.846749292
SLPI	Decreased	-1.941713306	5.581490529	7.523203835
SPINK5	Decreased	-1.604317921	5.364546483	6.968864404
SSC5D	Increased	1.878093911	6.737403081	8.615496992
TTC6	Decreased	-2.292278024	5.995136323	8.287414347
UGT3A1	Decreased	-3.894580454	3.018147387	6.912727841