

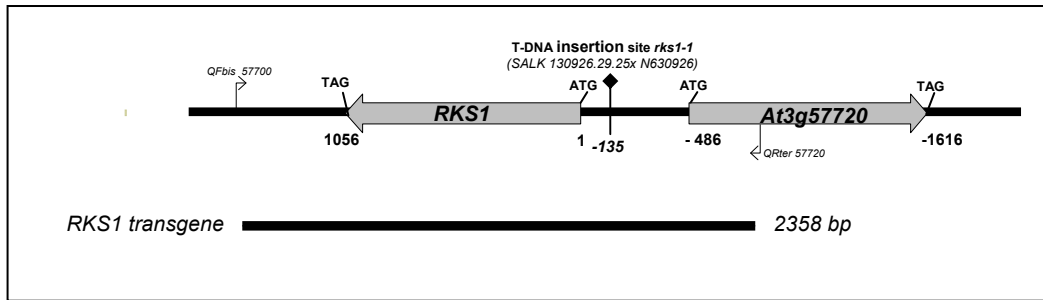
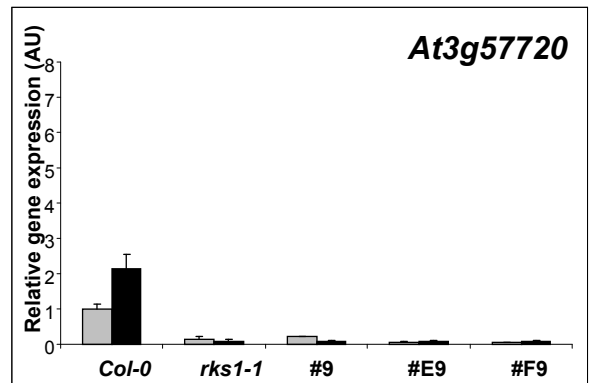
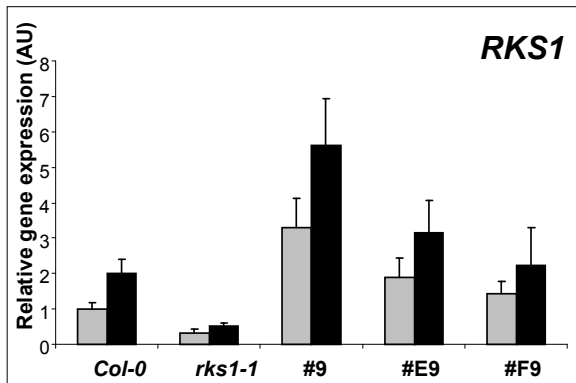
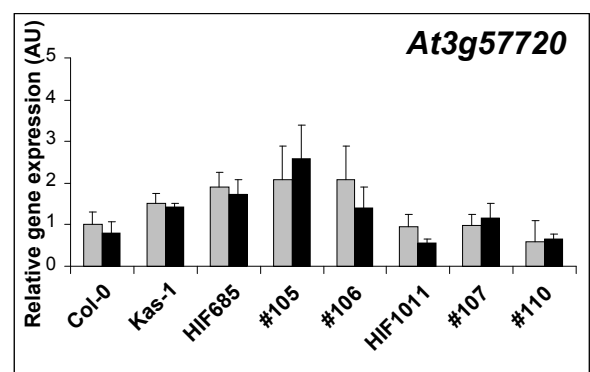
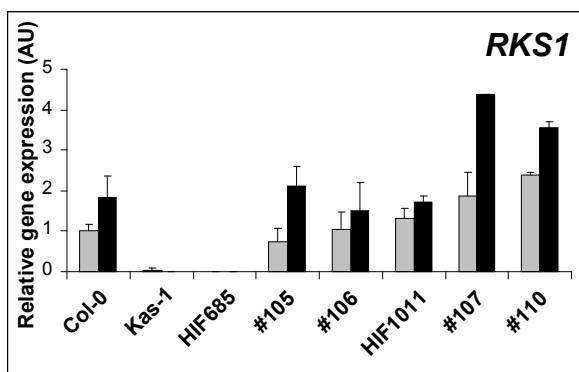
A**B****C**

Figure S3. Molecular characterization of the T-DNA knockout *rks1-1* Arabidopsis mutant, HIF lines and of corresponding plants complemented with a genomic *RKS1* transgene. (A) Structure of the *rks1-1* mutant and the construct used for complementation. *RKS1* is constituted by one exon (grey box) where the A in the start codon, ATG, is the first numbered nucleotide. The T-DNA insertion occurs at position -135 in *rks1-1*, as demonstrated by sequencing of the T-DNA borders and of their flanking region. (B) Expression analysis of *RKS1* and *At3g57720* genes in healthy (grey box) and infected (black box) leaves of wild-type (*Col-0*), mutant (*rks1-1*) and complemented lines (#9, #E9, #F9). (C) Expression analysis of *RKS1* and *At3g57720* genes in healthy (grey box) and infected (black box) leaves of wild-type (*Col-0*, *Kas-1*), HIF lines (HIF685, susceptible, HIF 1011, resistant) and lines transformed with the *RKS1* transgene (for HIF685, #105, #106; for HIF1011, #107, #110).