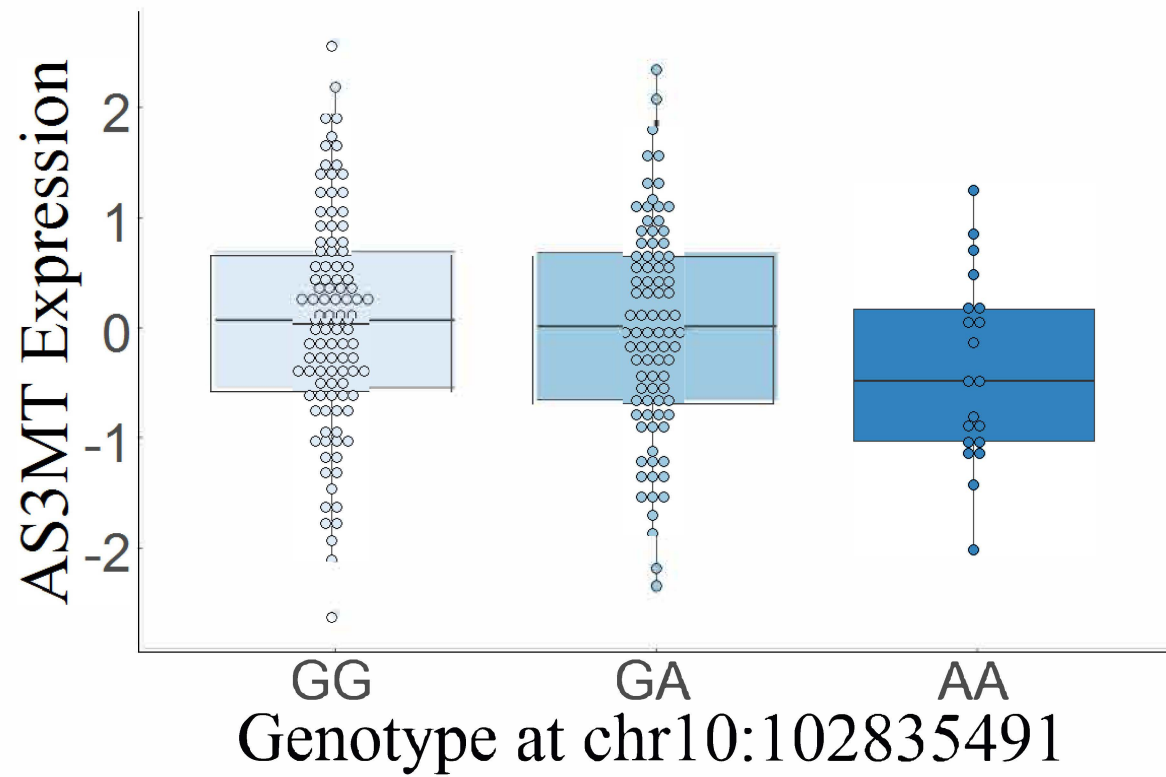
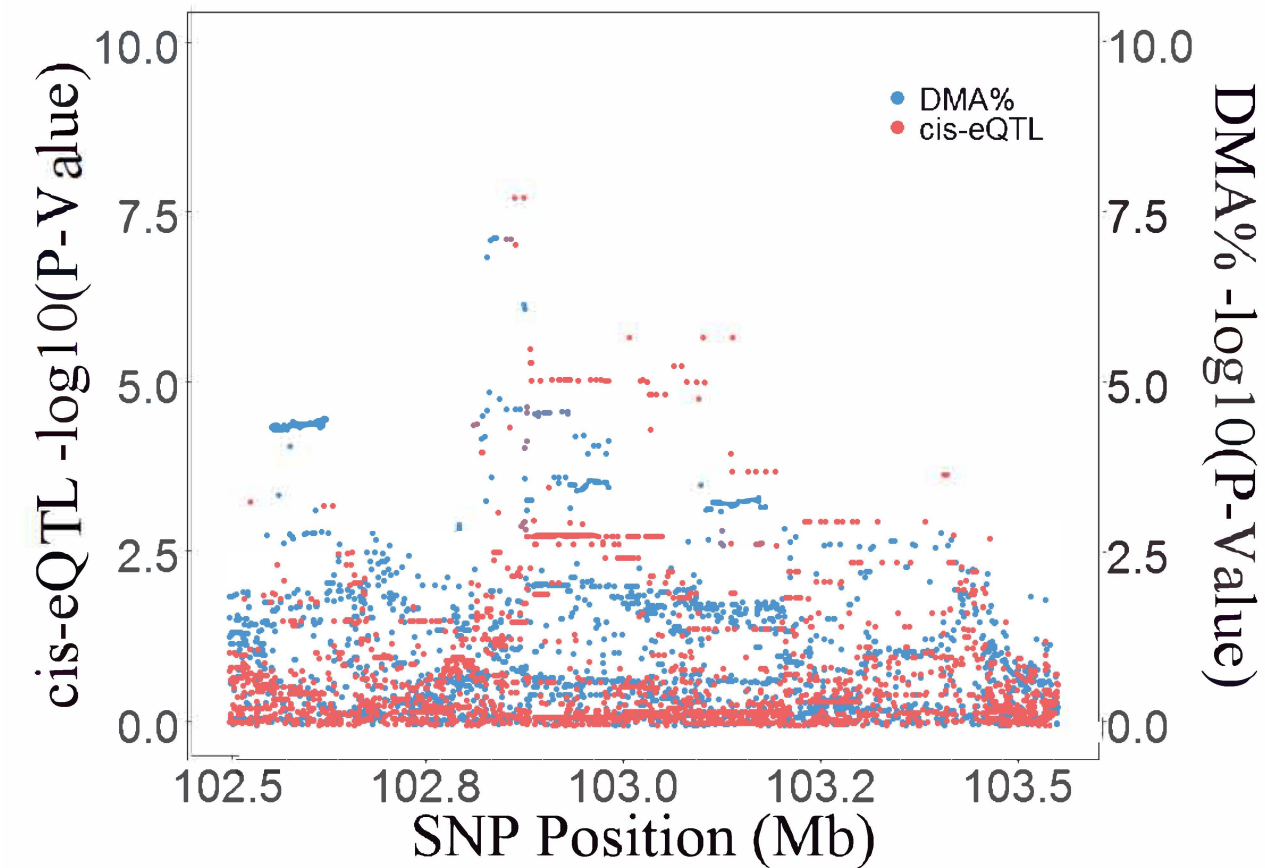


**Fig S11** Co-localization between HEALS DMA% association signal (rs4919687) and AS3MT eQTLs in the liver



**Fig S11.** Co-localization between HEALS DMA% association signal (rs4919687) and *AS3MT* eQTLs in the Liver

We detect *AS3MT* eQTLs in the liver and observe evidence of co-localization (Panel A), but this evidence was not consistent across all sets of priors analyzed. The low efficiency (low DMA%) allele at rs4919687 is associated with lower *AS3MT* expression in the liver, though this pattern is observed more strongly in other tissue types (Panel B).