

S1. Maternal Cumulative Prevalence Estimates of Mortality, by country and year, for sub-Saharan Africa

Country ^a	Year	mIM			mU5M			mOM	mROM	N
		maternal cumulative prevalence of infant mortality		IMR ^b	maternal cumulative prevalence of under-five mortality		U5MR ^b	maternal cumulative prevalence of offspring mortality	maternal cumulative prevalence of recurrent offspring mortality	analytic sample size, 20-49 year-old mothers
		20-44	45-49		20-44	45-49		45-49		
Angola	2015-16	168	310	44	225	442	68	484	343	10054
Benin	1996	308	548	94	450	751	166	808	568	4045
	2001	268	473	89	386	652	160	728	456	4421
	2006	223	388	67	334	579	125	649	385	13291
	2011-12	118	191	42	174	277	70	326	169	12117
Burkina Faso	1992	346	574	94	520	799	187	829	653	4461
	1998-99	337	538	105	521	784	219	845	654	4636
	2003	275	430	81	440	648	184	706	480	9002
	2010	243	415	65	372	599	129	666	402	12654
Burundi	2016-17	188	349	47	258	530	78	608	316	10845
Cameroon	1991	265	441	64	396	652	125	710	440	2578
	1998	233	402	77	353	544	151	658	401	3552
	2004	225	339	74	338	507	144	611	326	6941
	2011	198	312	62	306	446	122	530	263	10225
Chad	2014-15	274	383	72	403	564	133	633	441	13012
Comoros	2012	111	203	36	136	254	50	298	120	2807
Congo, Republic of	2011-12	132	221	39	198	351	68	429	146	8058
Congo, Democratic Republic of the	2013-14	209	340	58	294	484	104	558	342	13258
Cote d'Ivoire	1994	276	448	89	388	600	150	674	420	5552
	1998-99	278	455	112	385	586	181	655	417	1886
	2011-12	199	314	68	272	424	108	516	284	7050
Eswatini	2006-07	153	269	85	202	346	120	452	186	9915
Ethiopia	2016 ^c	214	385	48	264	520	67	594	333	3250
Gabon	2012	110	201	43	150	292	65	384	156	5851
Gambia	2013	128	246	34	183	374	54	421	222	6471
Ghana	1988	242	467	77	380	664	155	747	444	3289
	1993	209	394	66	317	575	119	624	385	3356
	1998	183	271	57	274	473	108	536	269	3399
	2003	184	297	64	267	438	111	480	238	3869
	2008	159	304	50	231	438	80	488	230	3193
	2014	135	251	41	189	364	60	419	174	6327

NOTE: All maternal cumulative prevalence estimates are stated per 1000 mothers in the specified age-group and calculated from full birth histories collected by the Demographic and Health Surveys (DHS) Program. Estimates are weighted as per DHS recommendations, unless otherwise specified (*).

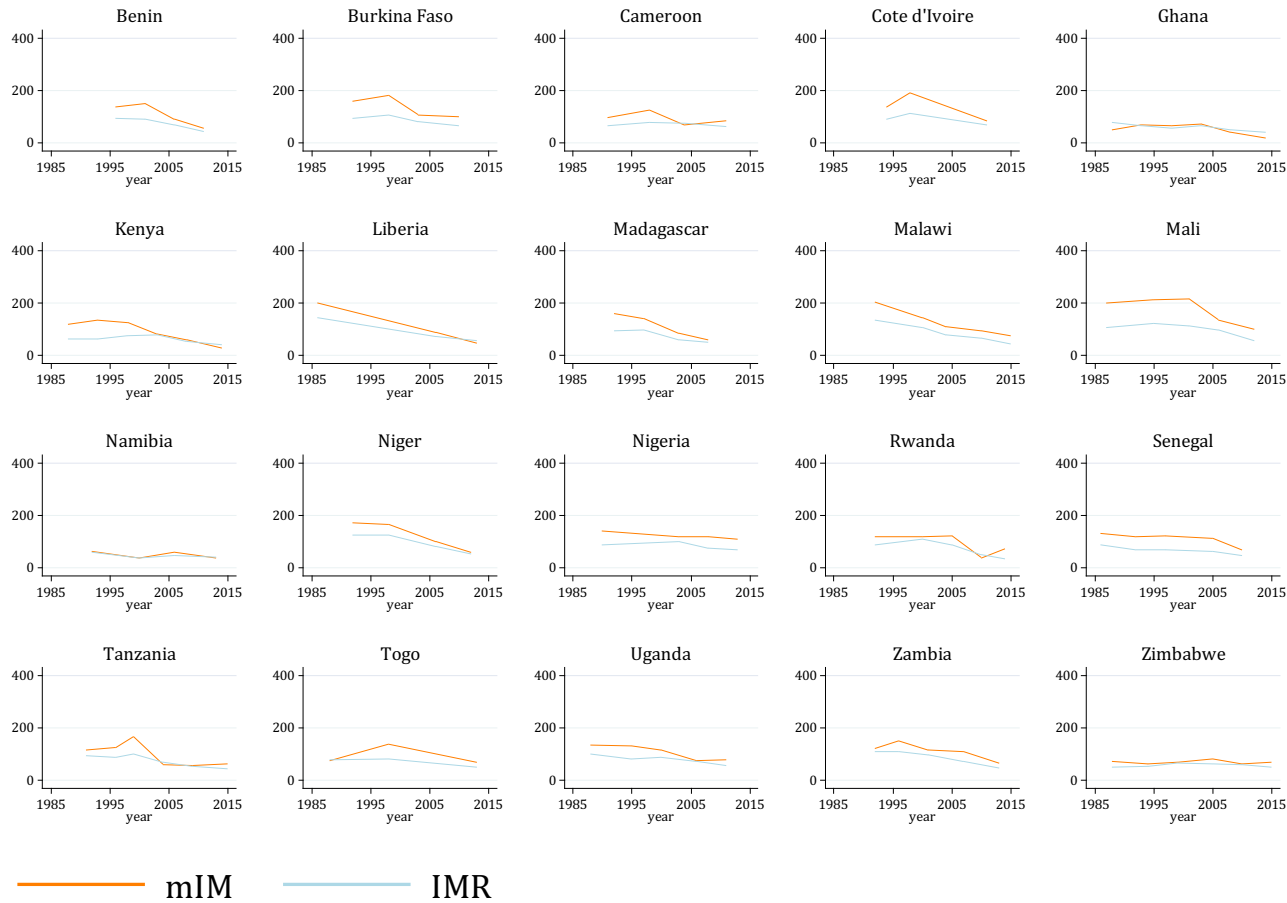
^aShaded countries excluded from trend figures; ^bEstimates published by the DHS: <https://dhsprogram.com/>; ^cGregorian Calendar

S1. Maternal Cumulative Prevalence Estimates of Mortality, by country and year, for sub-Saharan Africa, cont.

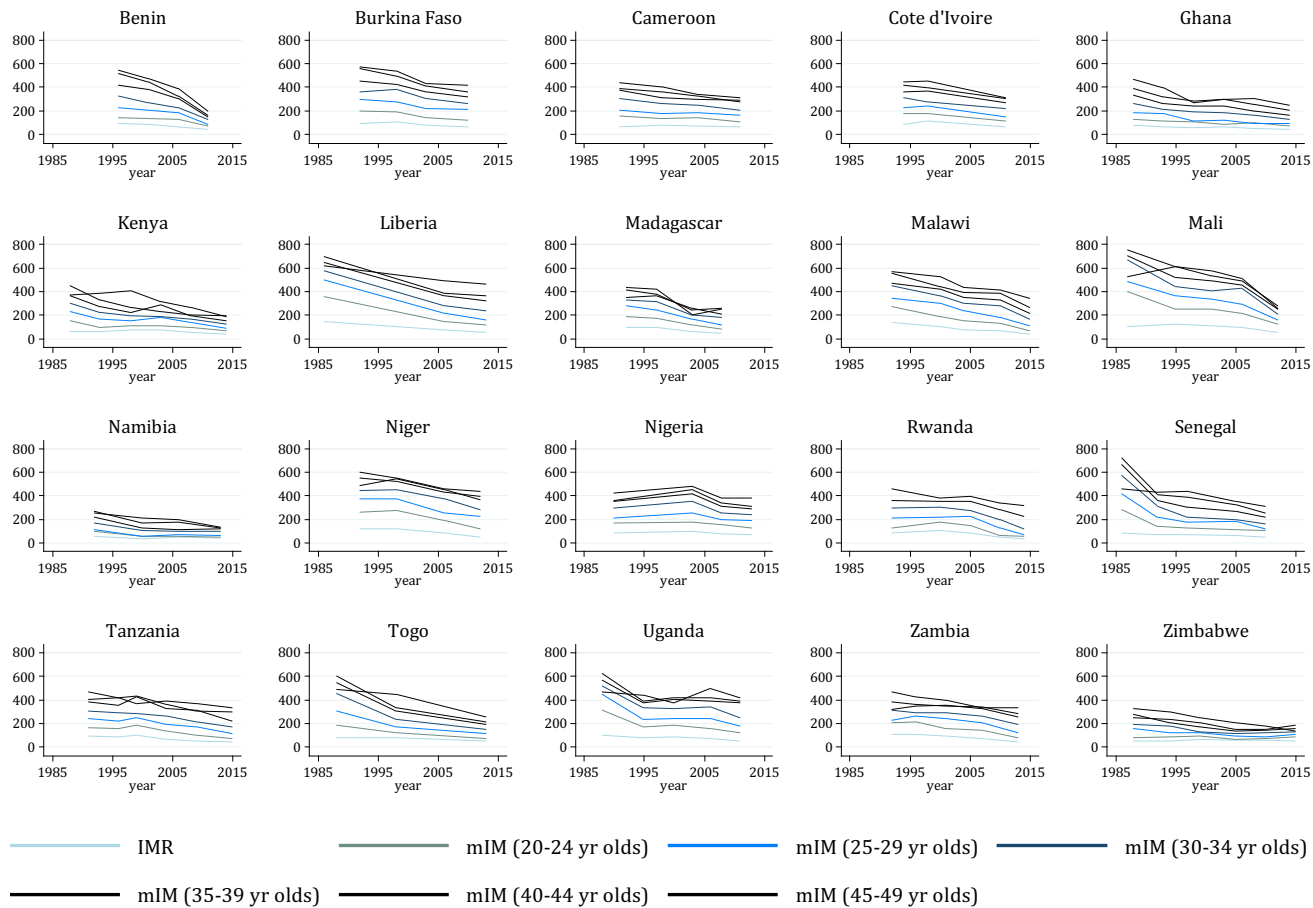
Country	Year	mIM			mU5M			mOM		mROM		N
		20-44	45-49	IMR	20-44	45-49	U5MR	45-49	45-49			
Guinea	2012	237	380	67	336	540	123	612	391	6394		
Kenya	*1988-89	203	369	61	278	493	90	544	301	5172		
	1993	200	388	62	270	530	96	566	300	5119		
	1998	180	404	74	241	470	111	545	302	5386		
	2003	191	318	77	247	439	115	509	243	5523		
	2008-09	152	263	52	201	339	74	396	169	5801		
	2014	119	189	39	156	265	52	338	128	22347		
Lesotho	2014	135	219	59	168	271	85	368	103	4312		
Liberia	*1986	413	618	144	526	708	222	734	548	3759		
	2006-07	265	494	71	355	591	110	631	456	5339		
	2013	224	465	54	318	597	94	654	414	6966		
Madagascar	1992	300	431	93	432	630	163	689	436	4053		
	1997	283	422	96	402	590	159	666	404	4760		
	2003-04	193	202	58	272	329	94	440	209	5510		
	2008-09	164	248	48	226	369	72	430	226	11915		
Malawi	1992	401	569	135	561	786	234	838	609	3442		
	2000	316	524	104	458	723	189	780	550	9581		
	2004	256	431	76	370	609	133	709	438	8681		
	2010	237	410	66	355	651	112	711	456	17001		
	2015-16	151	341	42	223	502	64	564	290	17834		
Mali	*1987	386	528	105	584	755	247	795	646	2454		
	1995-96	421	614	122	599	827	238	866	688	7277		
	2001	390	578	113	561	795	229	831	621	9544		
	2006	357	510	96	511	727	191	769	570	10629		
	2012-13	191	253	56	263	348	95	377	233	7858		
Mozambique	2011	228	339	64	295	476	97	551	334	9745		
Namibia	1992	163	255	57	218	362	84	394	195	3471		
	2000	96	209	38	136	293	62	357	121	4547		
	2006-07	98	198	46	134	303	69	369	111	6329		
	2013	90	137	39	118	191	54	243	77	6167		
Niger	1992	402	598	123	641	823	318	882	720	4664		
	1998	420	552	123	632	795	274	839	682	5337		
	2006	326	455	81	539	730	198	785	582	6708		
	2012	260	435	51	437	706	127	793	590	8656		
Nigeria	1990	267	424	87	412	600	193	636	459	6116		
	2003	316	477	100	458	668	201	724	507	4797		
	2008	245	383	75	369	564	157	619	412	22496		
	2013	227	379	69	334	525	128	580	385	26174		

S1. Maternal Cumulative Prevalence Estimates of Mortality, by country and year, for sub-Saharan Africa, cont.

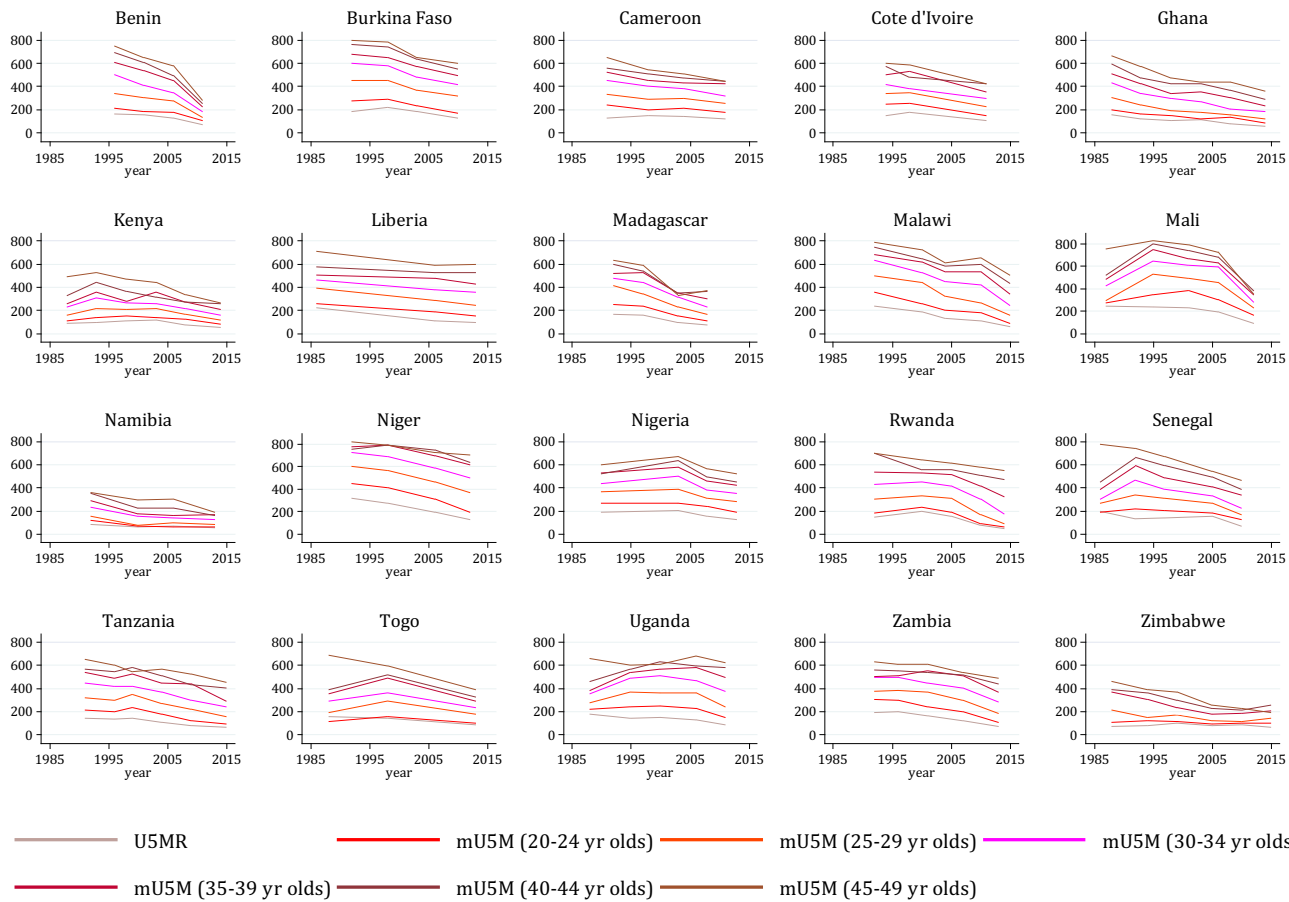
Country	Year	mIM			mU5M			mOM	mROM	N
		20-44	45-49	IMR	20-44	45-49	U5MR	45-49	45-49	
Rwanda	1992	288	483	85	423	695	151	778	565	4171
	2000	285	463	107	419	641	196	782	533	6412
	2005	277	423	86	395	617	152	733	503	6956
	2010	195	394	50	285	576	76	687	373	8367
	2014-15	151	370	32	215	553	50	623	339	8587
Sao Tome Principe	2008-09	132	297	38	191	393	63	470	192	1901
Senegal	*1986	296	460	88	493	775	195	812	596	3047
	1992-93	278	431	68	440	740	132	793	558	4247
	1997	234	434	68	386	673	139	747	470	5706
	2005	210	355	61	328	541	152	621	368	9027
	2010	164	307	47	239	464	72	544	291	10011
Sierra Leone	2013	303	461	92	399	614	156	670	445	11468
South Africa	2016	74	99	35	87	132	42	172	47	5919
Tanzania	1991-92	280	467	92	387	653	141	712	429	6385
	1996	268	417	87	363	604	136	699	426	5723
	1999	291	367	99	389	549	147	658	348	2763
	2004-05	236	390	68	329	567	112	661	391	7176
	2010	211	367	51	287	527	81	601	304	7008
	2015-16	168	334	43	227	455	67	509	228	9168
Togo	*1988	249	486	77	388	685	155	775	446	2381
	1998	226	445	80	356	596	146	674	381	6014
	2013-14	151	253	49	225	387	88	484	218	6702
Uganda	*1988-98	313	468	98	461	662	177	738	471	3214
	1995	275	437	81	407	603	147	716	412	4959
	2000	291	378	88	425	612	151	728	456	5093
	2006	290	497	71	418	682	128	753	451	6050
	2011	243	422	54	339	621	90	683	387	6017
Zambia	1992	272	465	107	422	631	191	725	461	4650
	1996	279	423	109	422	608	197	707	484	5514
	2001-02	260	395	95	399	611	168	733	466	5354
	2007	239	335	70	357	537	119	630	330	5046
	2013-14	178	331	45	259	487	75	555	319	11562
Zimbabwe	1988	180	329	49	250	461	71	511	239	2839
	1994	157	300	53	221	391	77	466	205	4152
	1999	136	247	65	185	371	102	449	169	3952
	2005-06	106	204	60	143	258	82	357	127	5950
	2010-11	110	177	57	146	229	84	319	109	6371
	2015	130	136	50	170	193	69	259	78	6893



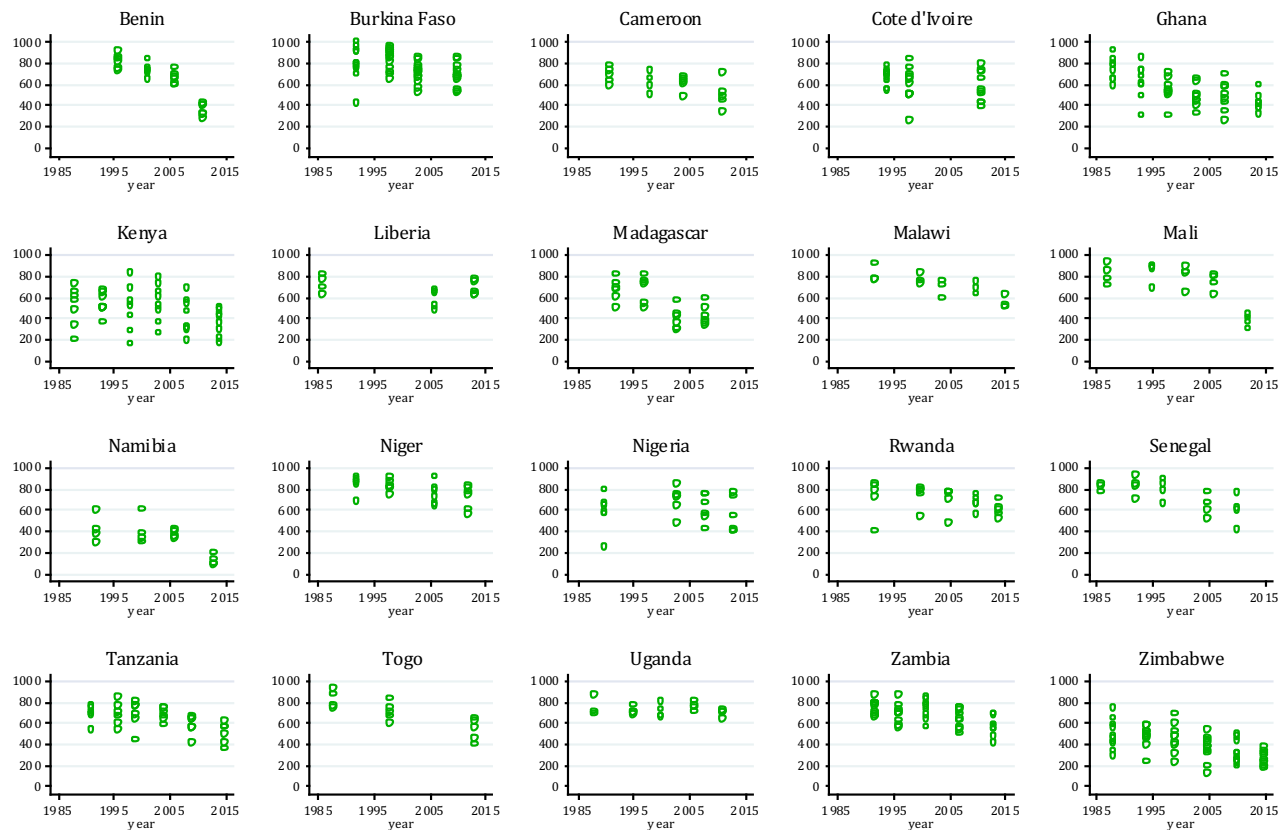
S2. Infant mortality rate (IMR) & maternal cumulative prevalence of infant mortality (mIM) among 15- to 19-year-old mothers in 20 sub-Saharan African countries between circa 1990 & circa 2010. Expressed per 1,000 live births (IMR) and per 1,000 mothers (mIM).



S3. Infant mortality rate (IMR) & maternal cumulative prevalence of infant mortality (mIM), disaggregated by five-year birth cohorts in 20 sub-Saharan African countries between circa 1990s & circa 2010. Expressed per 1,000 live births (IMR) and per 1,000 mothers (mIM).

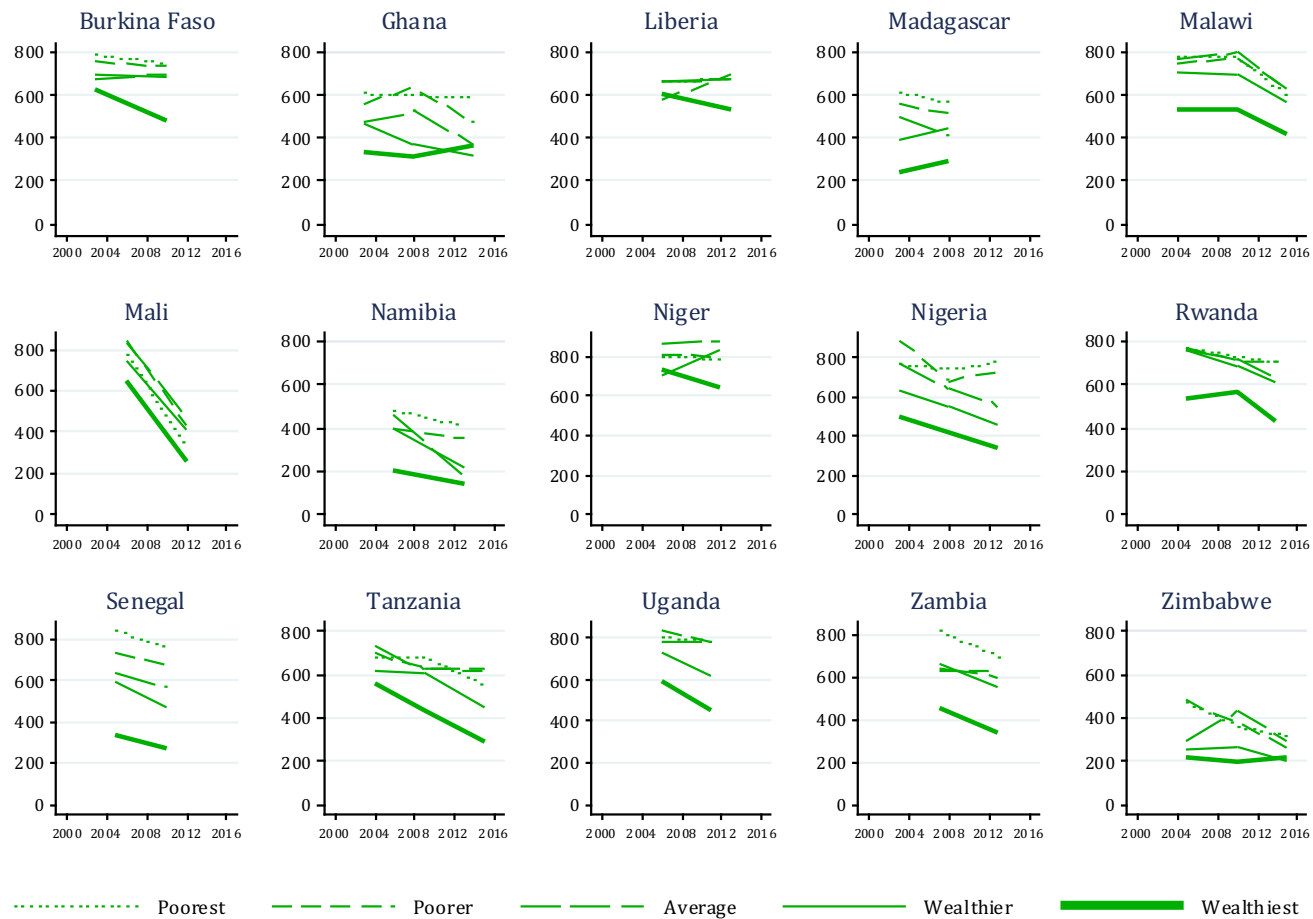


S4. Under-five mortality rate (U5MR) & maternal cumulative prevalence of under-five mortality (mU5M), disaggregated by five-year birth cohorts in 20 sub-Saharan African countries between circa 1990 & circa 2010. Expressed per 1,000 live births (U5MR) & 1,000 mothers (mU5M).



○ Subnational region

S5. Subnational region-level maternal cumulative prevalence of offspring mortality (mOM) for 45- to 49-year-old mothers in 20 sub-Saharan African countries between circa 1990 & circa 2010. Expressed per 1,000 mothers. To facilitate comparison over time, we harmonized regions, even if the DHS-specified subnational boundaries changed between survey rounds. We maintained the largest numbers of regions possible. For each country, the number of regions are as follows: Benin 6; Burkina Faso 13; Cameroon 5; Cote d'Ivoire 10; Ghana 8; Kenya 8; Liberia 5; Madagascar 6; Malawi 3; Mali 4; Namibia 4; Niger 6; Nigeria 6; Rwanda 5; Senegal 4; Tanzania 6; Togo 5; Uganda 4; Zambia 9; Zimbabwe 10.



S6. Maternal cumulative prevalence of offspring mortality (mOM) for 45- to 49-year-old mothers, by household wealth, in 15 sub-Saharan African countries between circa 2000 & circa 2015. Expressed per 1,000 mothers.