

Oceanic axial depth and age-depth distribution of oceanic lithosphere: Comparison of magnetic anomaly picks versus age-grid models

Supplemental materials in compressed folder include the following figures, tables and data files:

Figures: SupplementalFig1atot.pdf

This contains area (in km²/10m depth bin) versus depth of the main ocean basin ridge and each segment separately.

Tables:

Table S1-GSFMLPickswAttributes.txt An ascii file that tabulates the various attributes of each magnetic anomaly pick used in the present analysis.

Table S2-MOBRidgeDepthRate.txt An ascii file that tabulates the location of all ridge locations extracted from SRTM_Plus using the RevisedRidges2.gen file and associated spreading rate and depth flag indicator.

Table S3-OceanicZeroAgeCrustalThickness.txt An ascii text file listing the location, thickness and source of all zero-age crustal thickness data used.

Table S4-MainOceanBasinGSFMLStats.txt An ascii text file with a listing of the sediment thickness corrected depth statistics as a function of magnetic anomaly pick age (=chron) restricted to the main ocean basins.

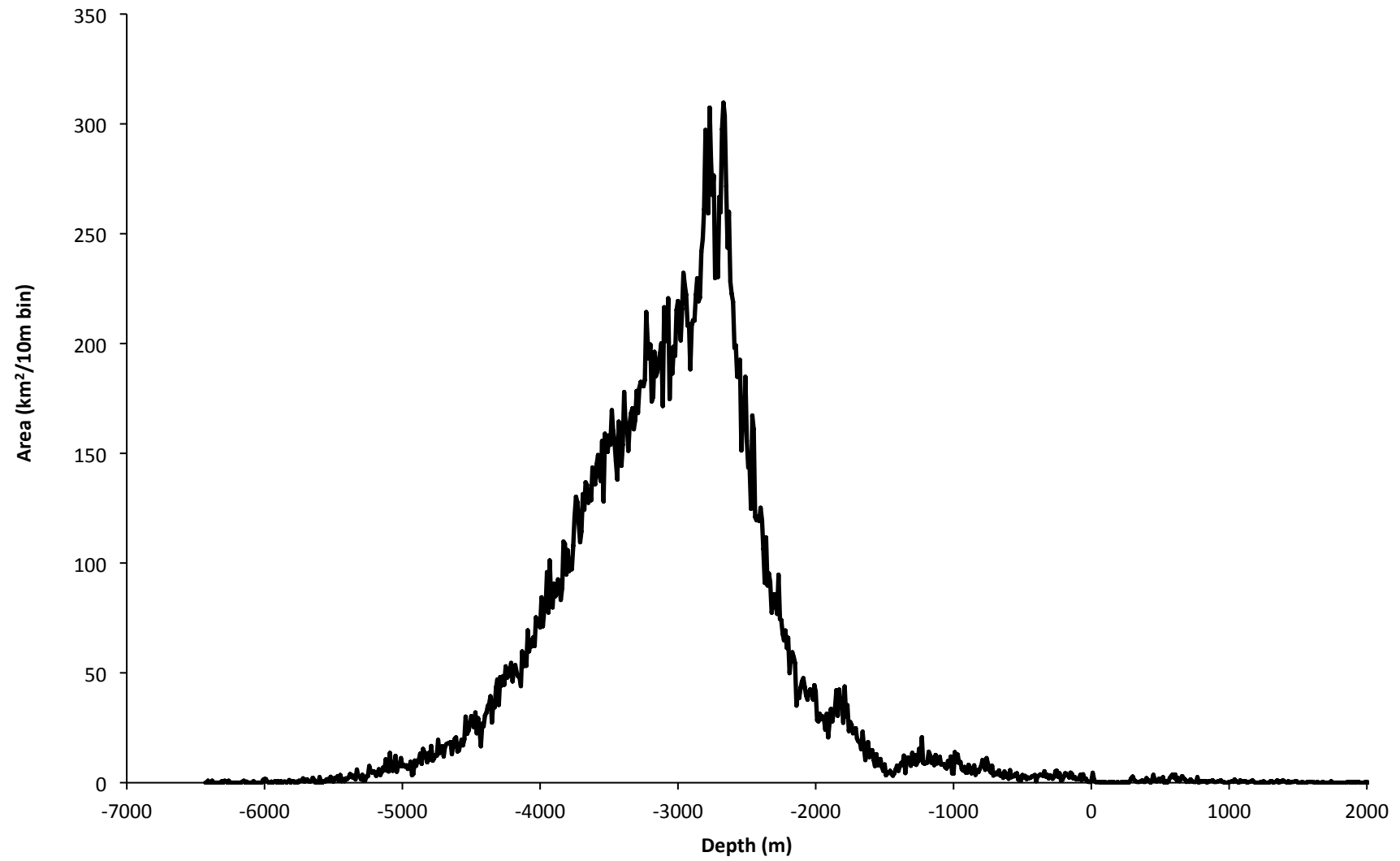
Table S5-MainOceanBasinNoNAtlShebaGSFMLStats.txt An ascii text file that this is the same as Table S4 except that data from the North Atlantic and Sheba ridges have been excluded.

Table S6-PGAP-PlateIds.txt An ascii text file listing PGAP Plate IDs

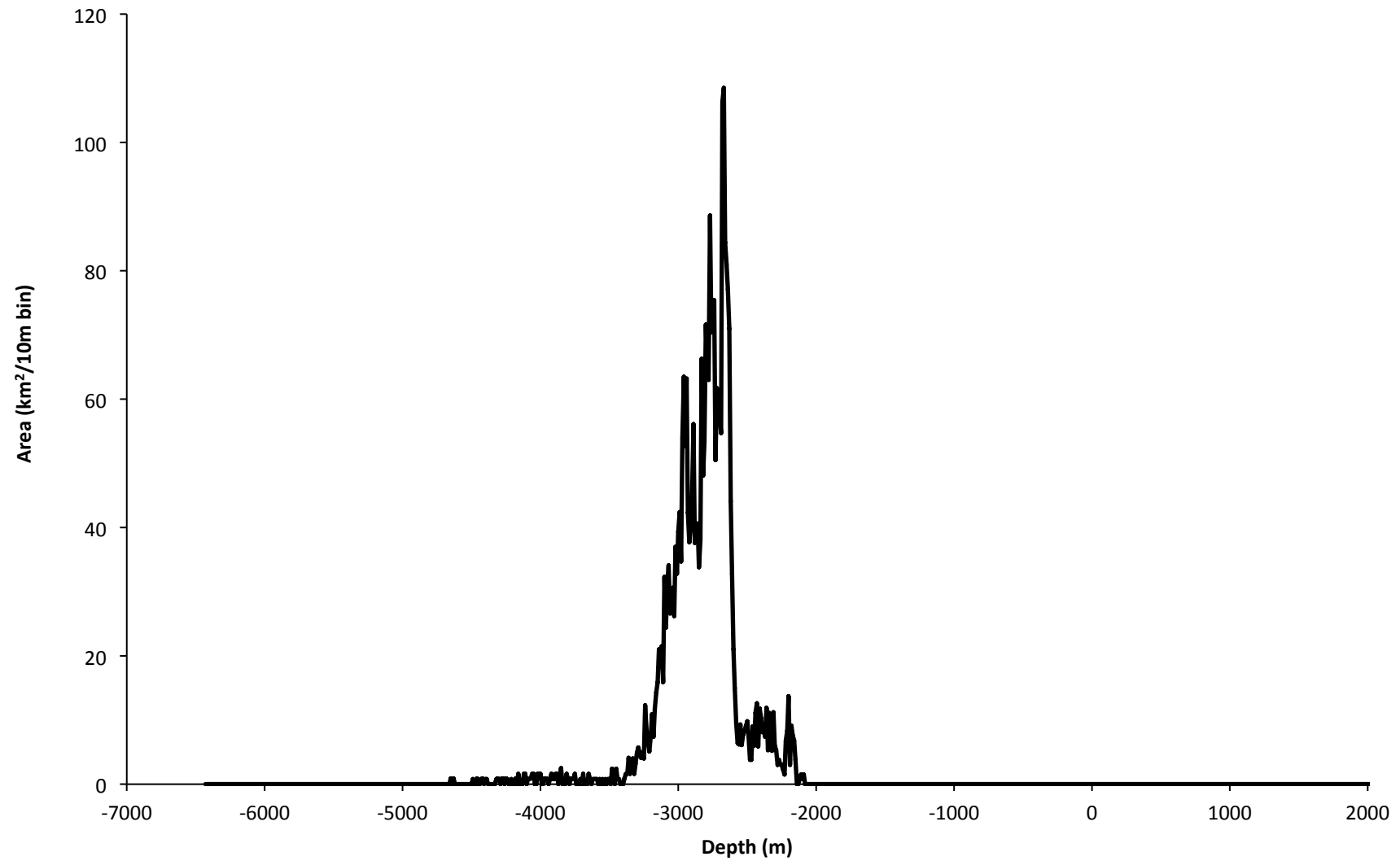
Data File:

Supplemental File-RevisedRidges2.gen An ascii comma delimited text file with Header followed by longitude, latitude pairs terminated by 0.00000,99.00000
PlateID1 PlateID2 RotationLatitude RotationLongitude RotationAngle Description
Long1, Lat1
Long2, Lat2
....
...
0.00000,99.00000

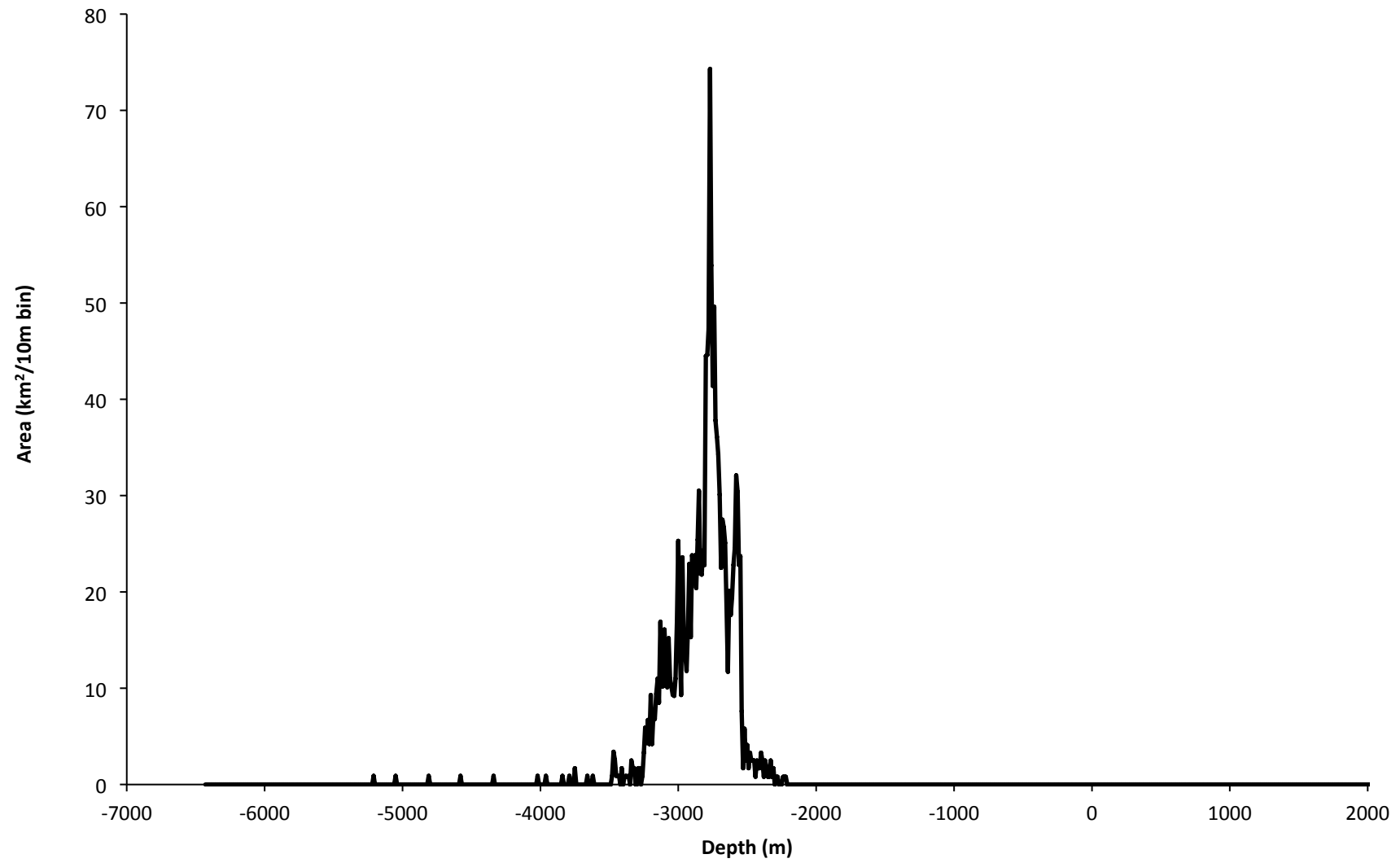
Global



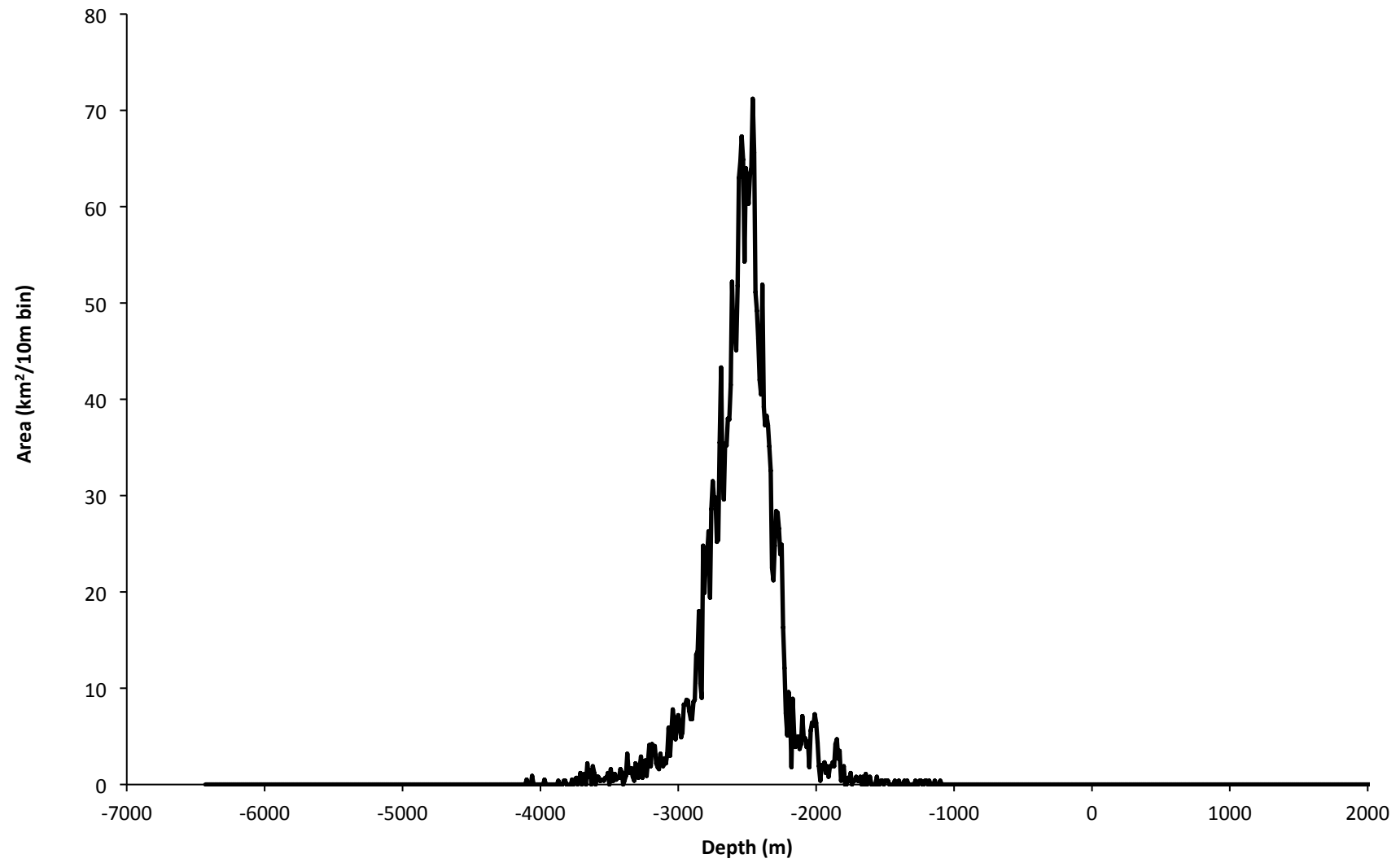
East Pacific Rise Nazca-Pacific



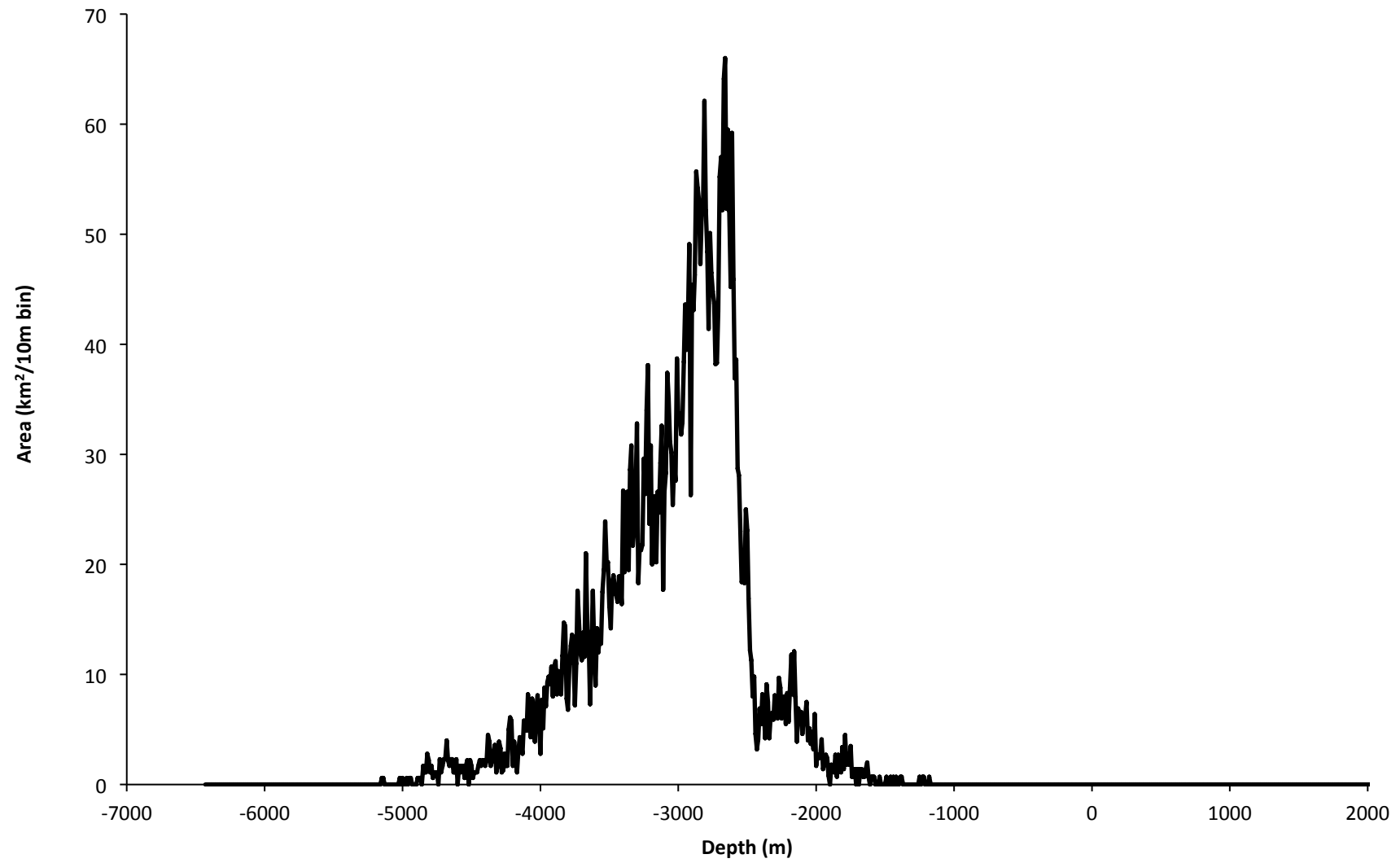
East Pacific Rise Cocos-Pacific



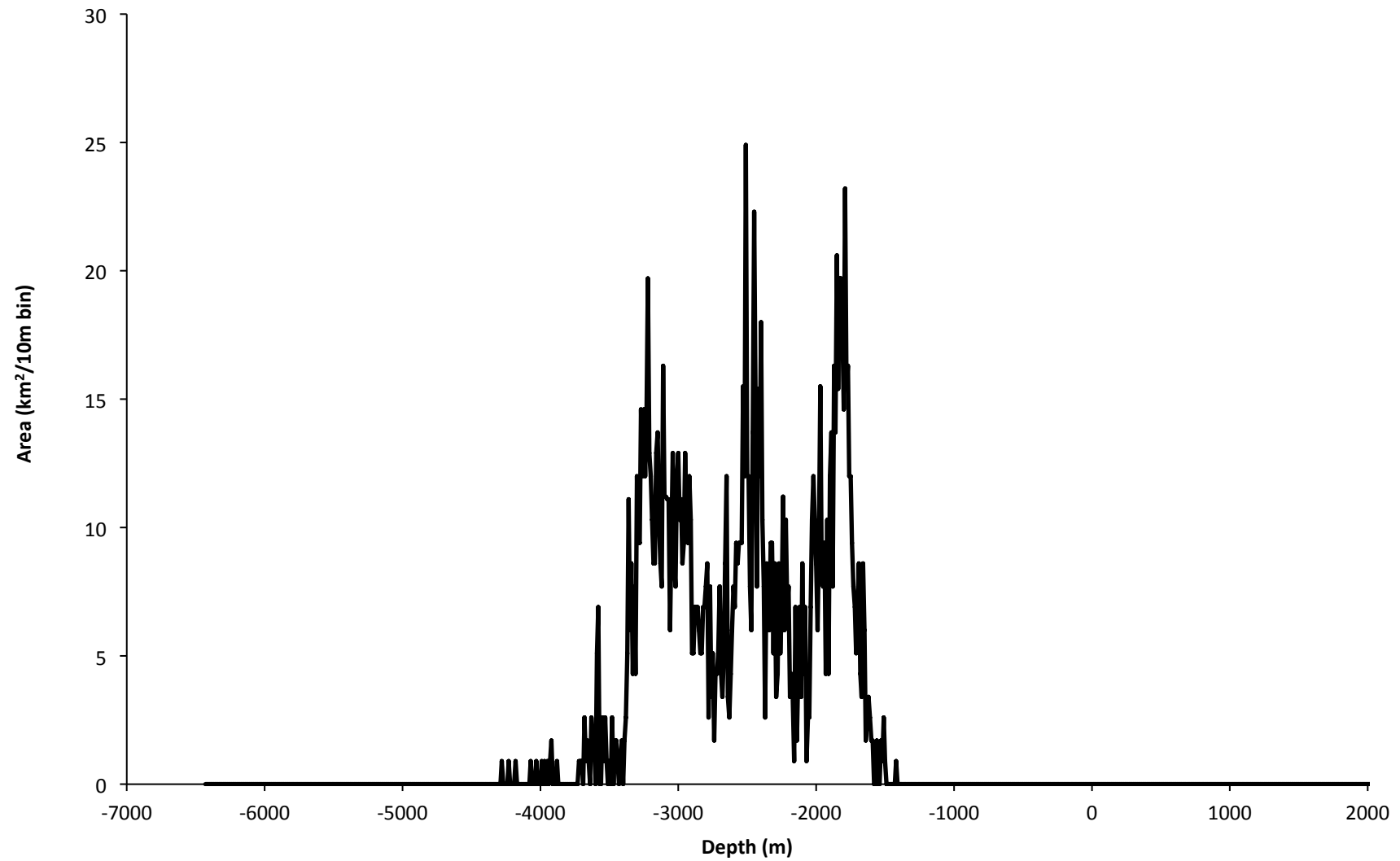
Pacific Antarctic Ridge



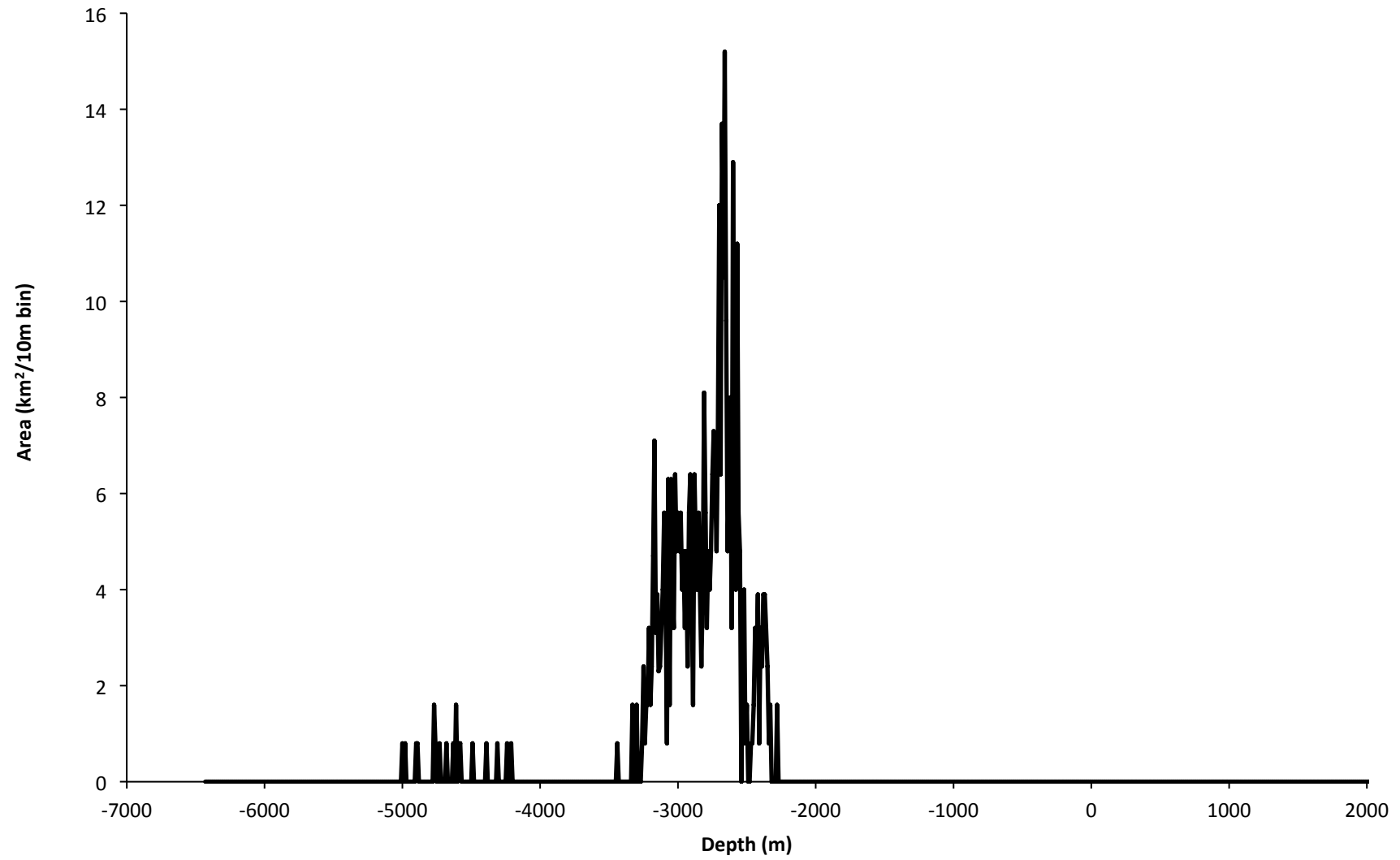
Central Indian Ridge



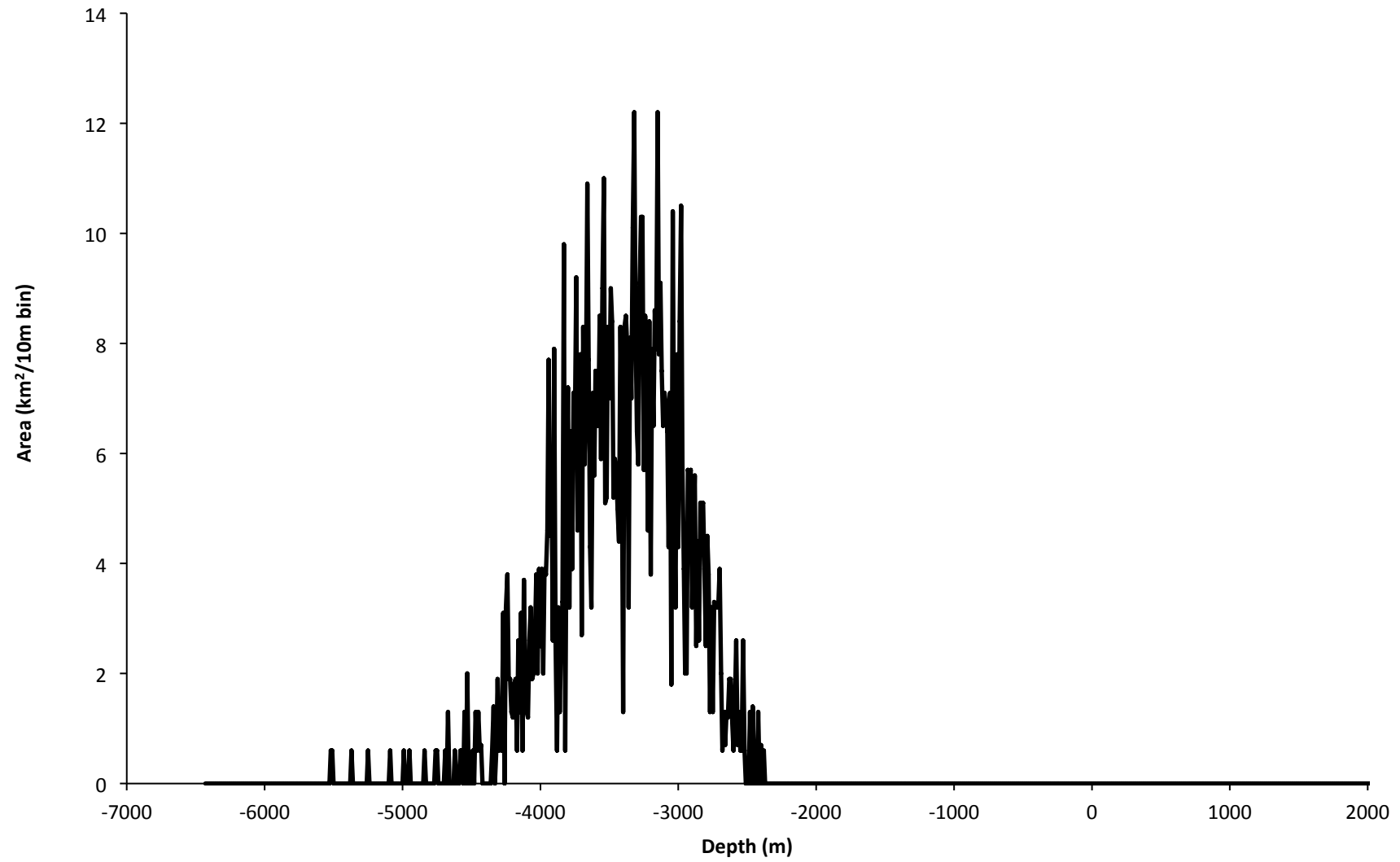
Galapagos Ridge Cocos-Nazca



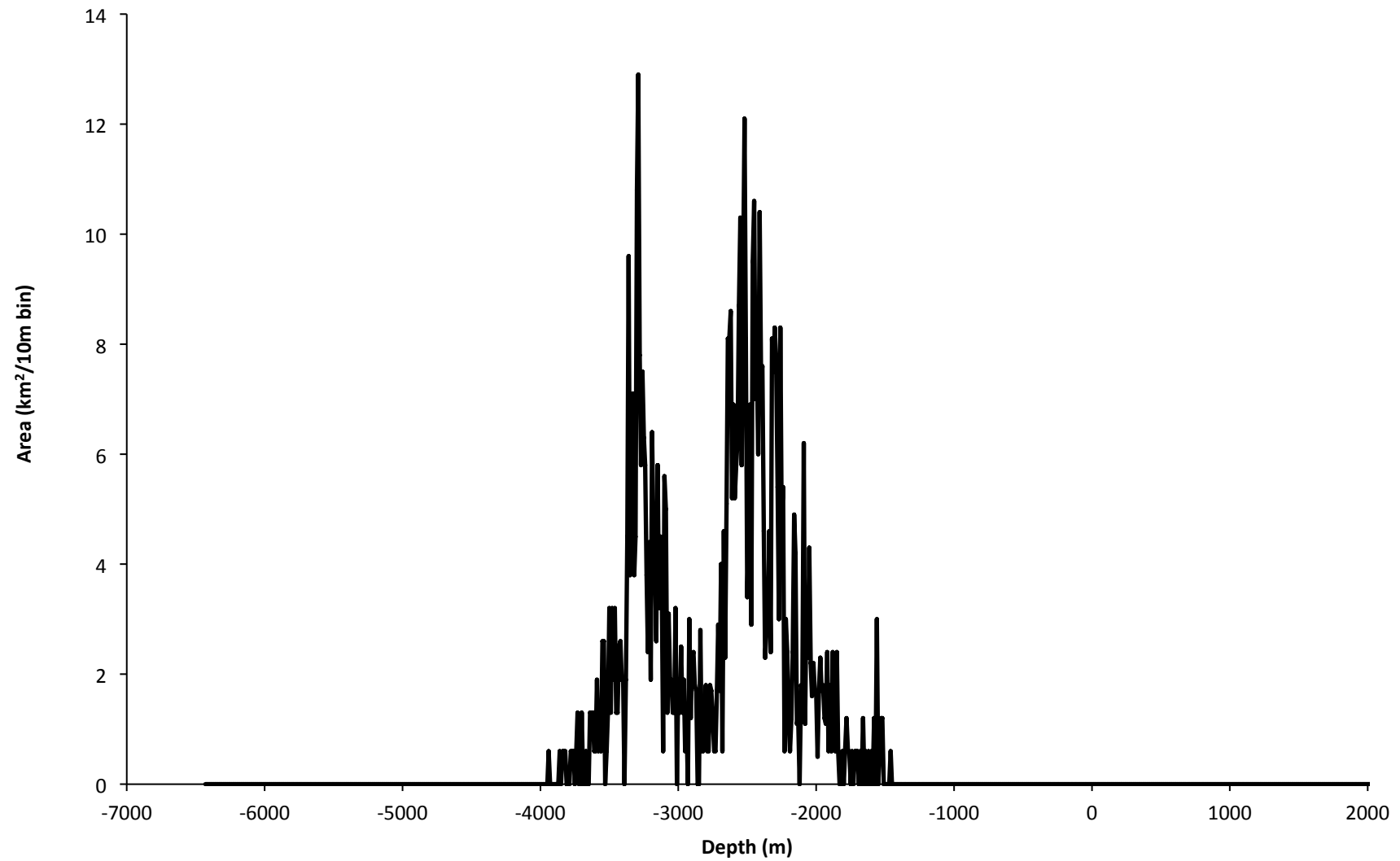
Gulf of California Pacific-North America



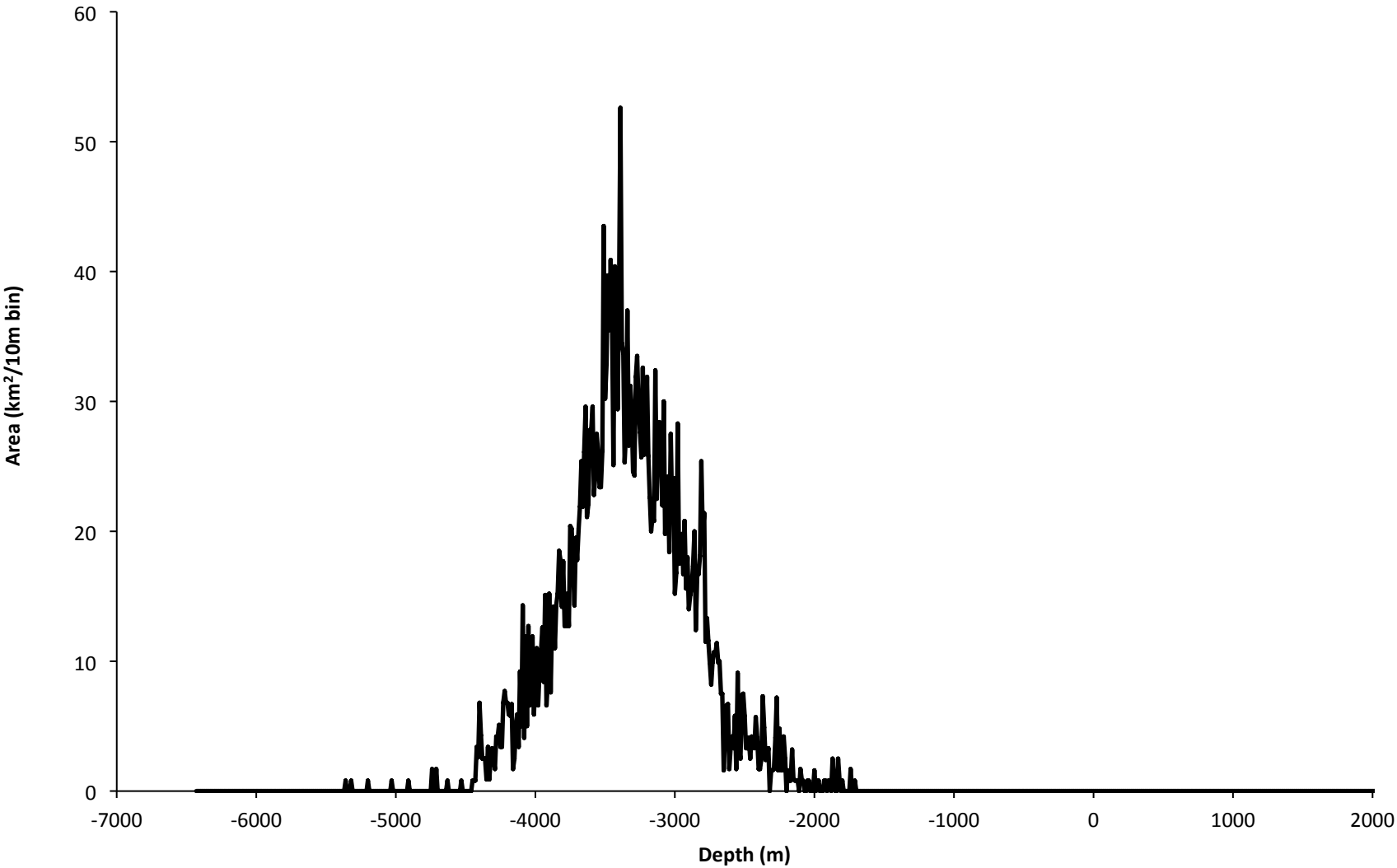
Chile Rise Nazca-Antarctica



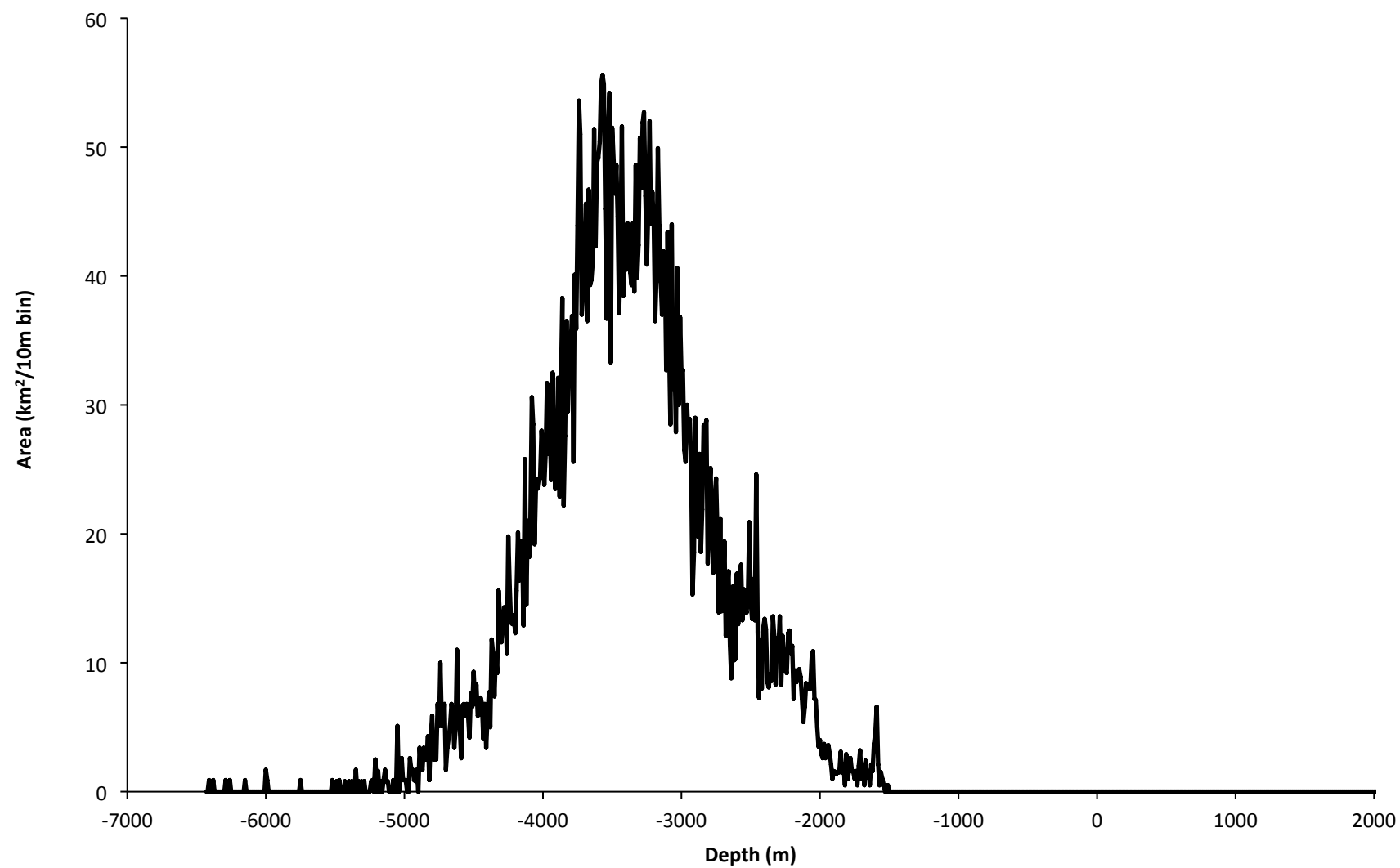
Juan de Fuca Pacific-Juan de Fuca



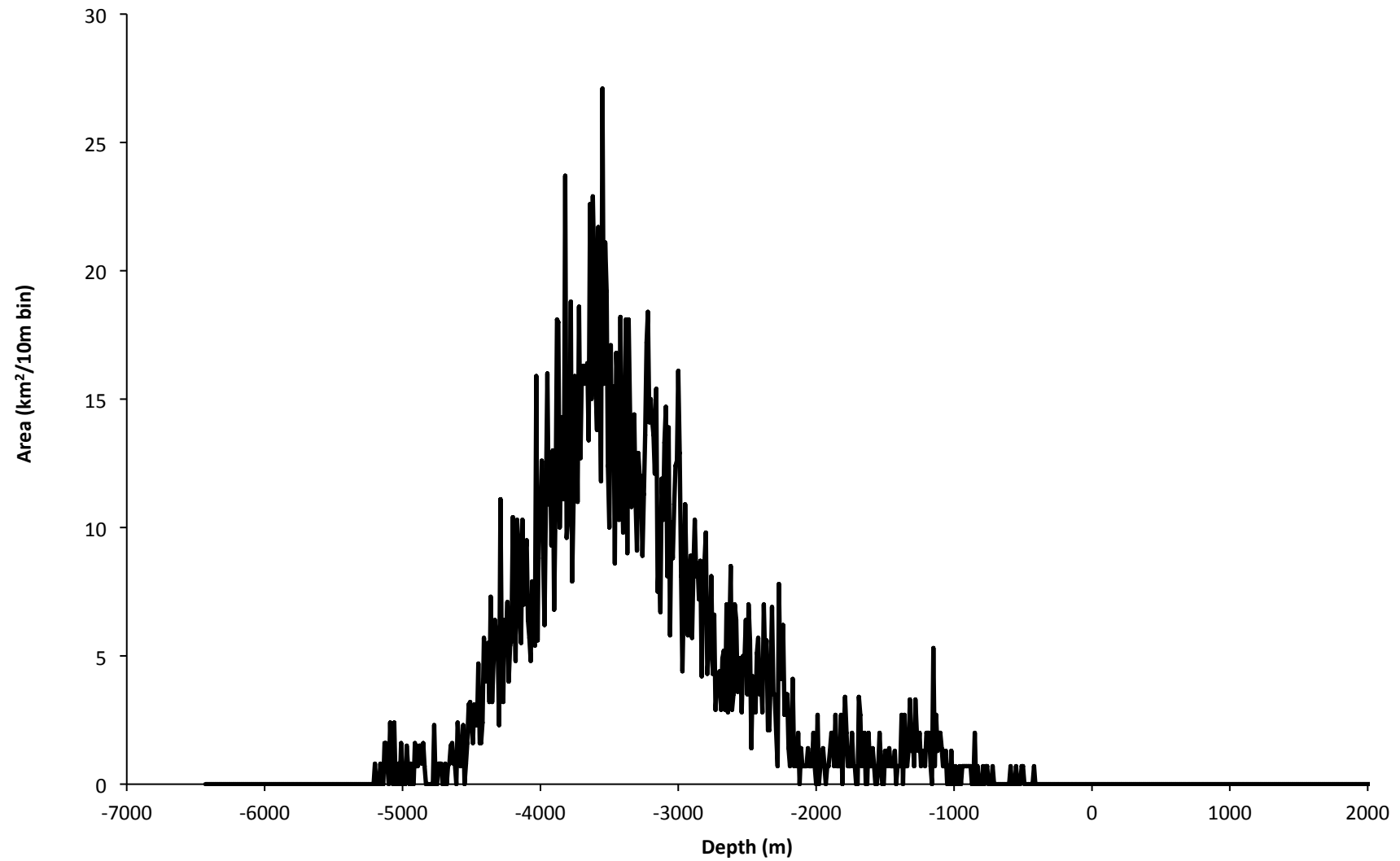
Carlsberg India-Somalia



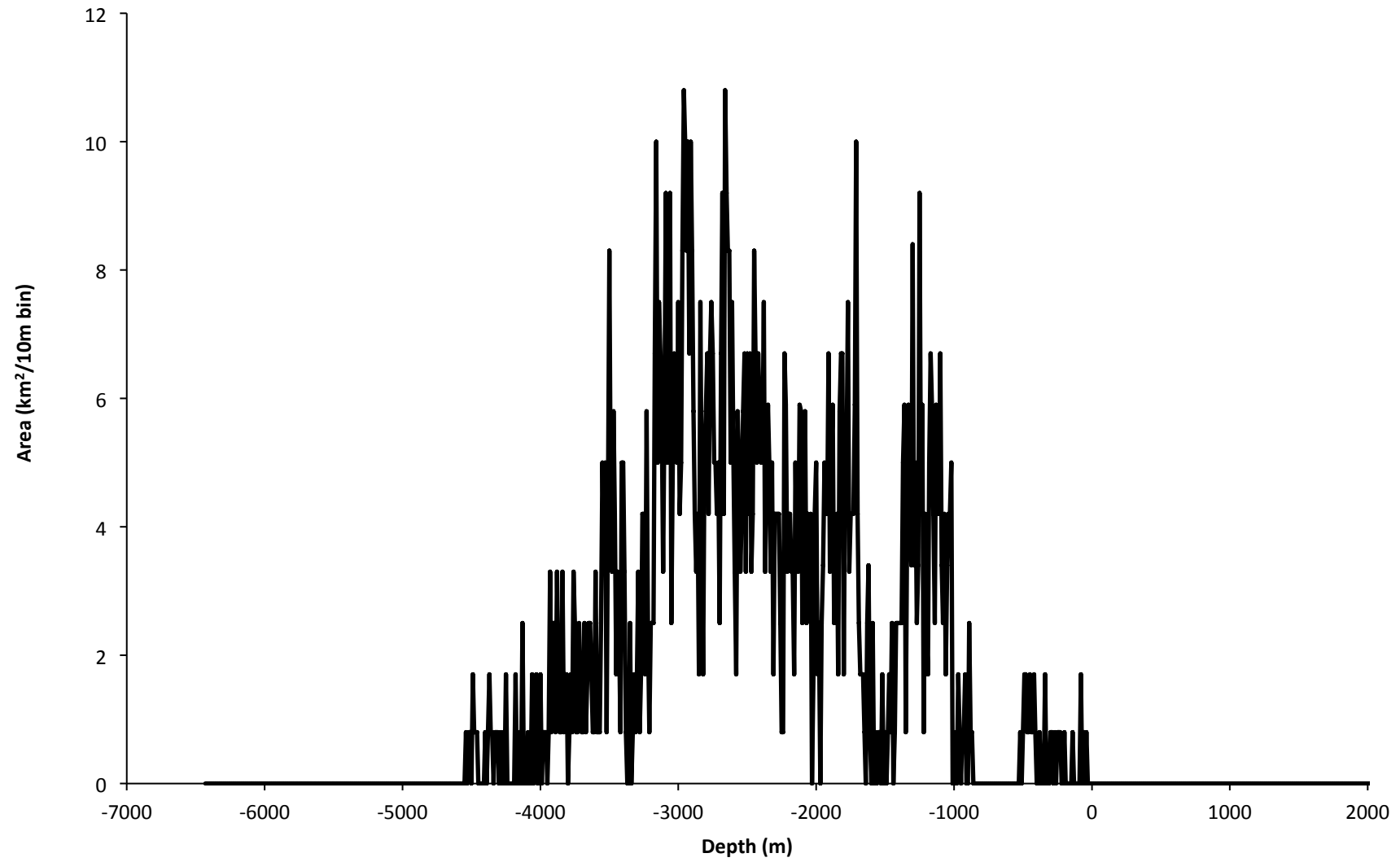
South Atlantic Nubia-South America



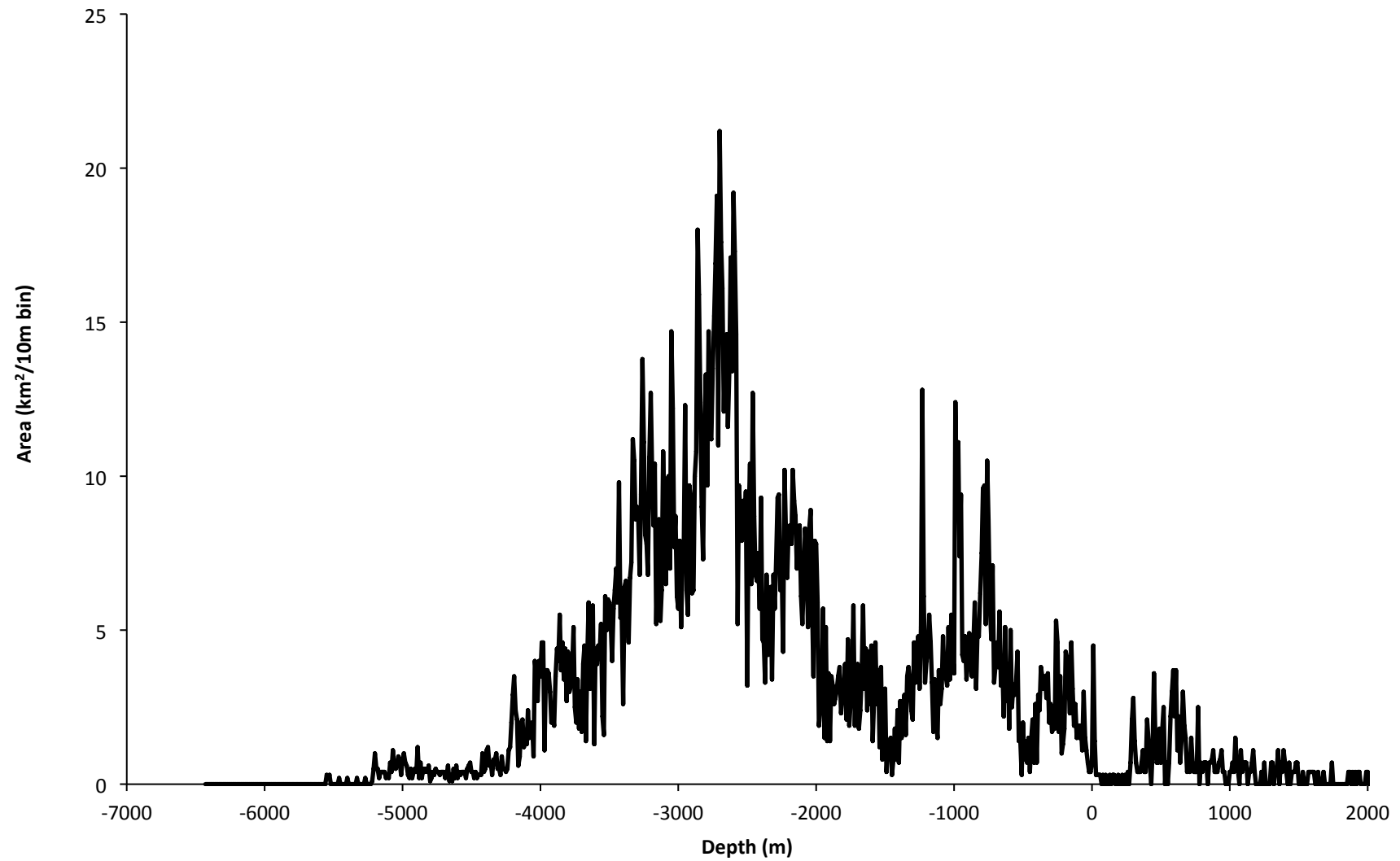
Central Mid-Atlantic Ridge Nubia-North America



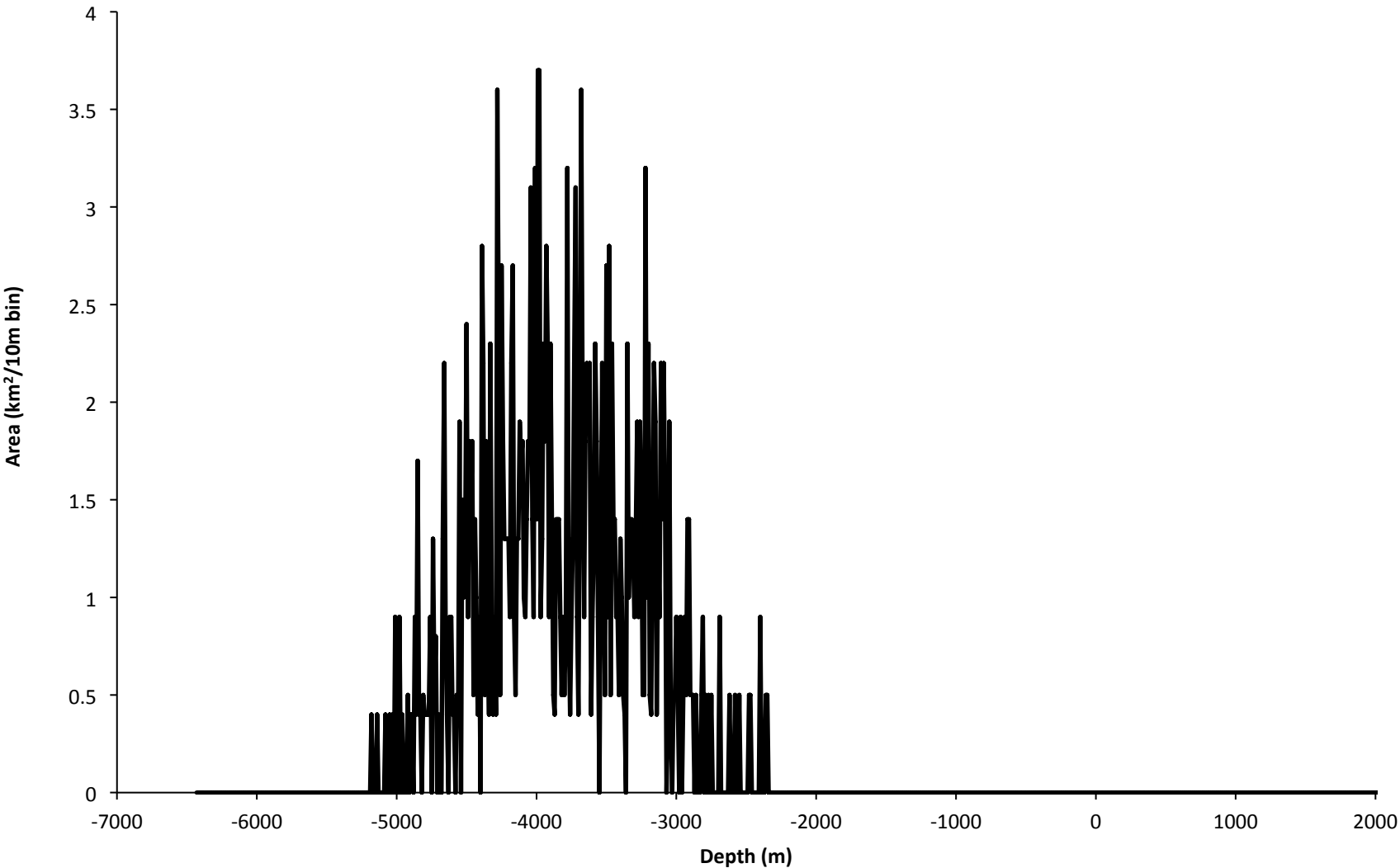
Gulf of Aden Arabia-Somalia



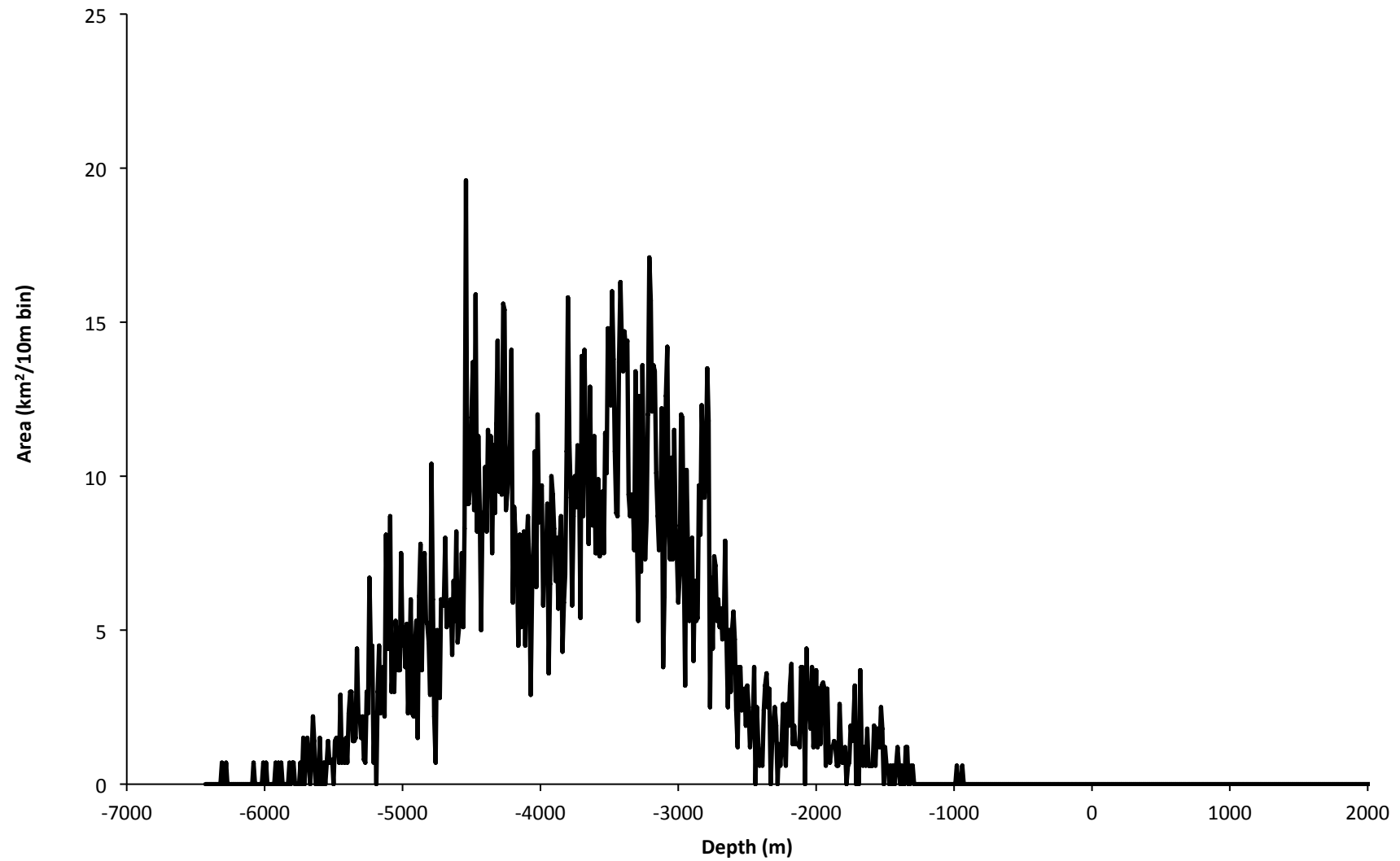
North Atlantic Eurasia-North America



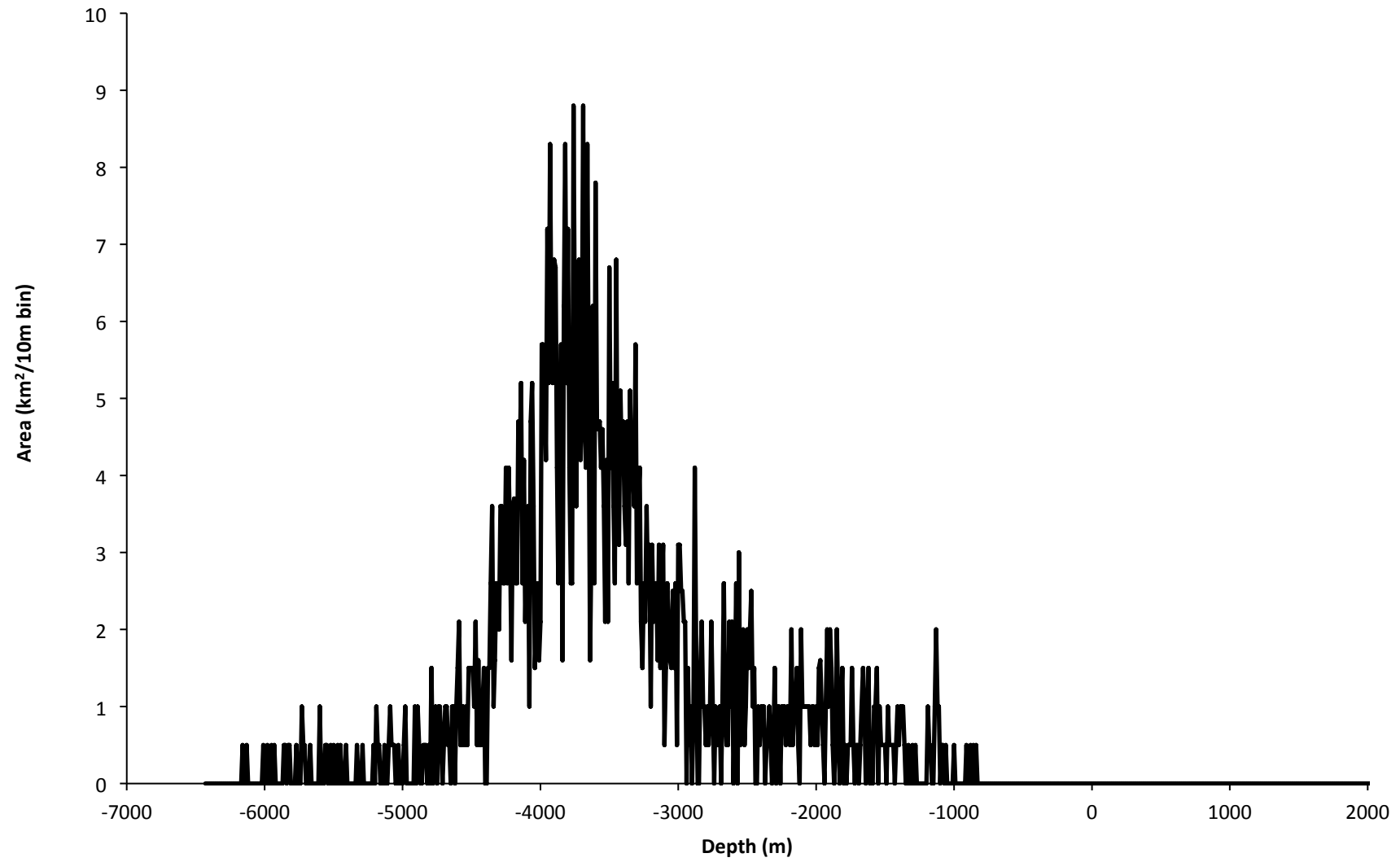
American-Antarctic Ridge



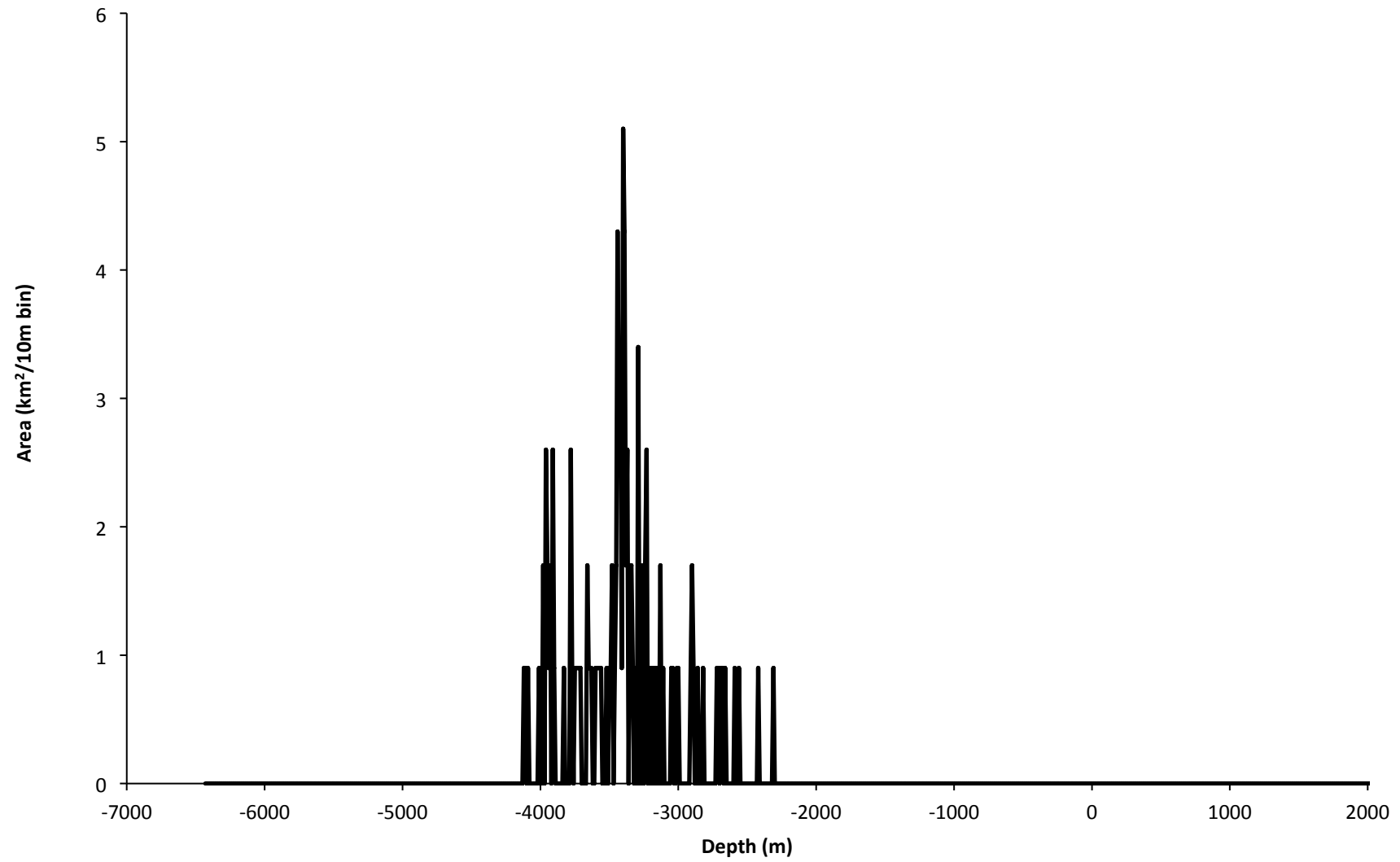
SW Indian Ridge Nubia-Antarctica



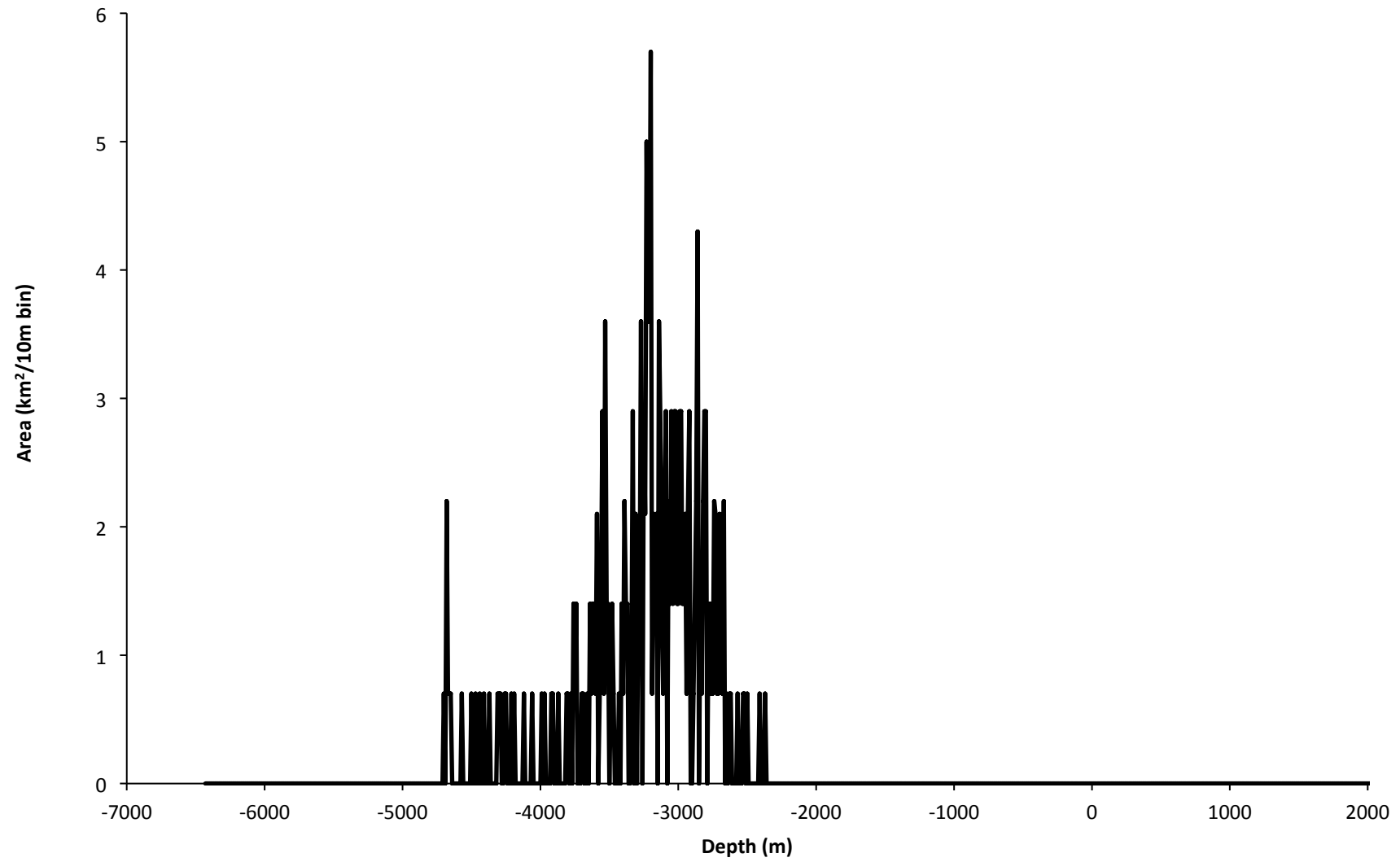
SW Indian Ridge Somalia-Antarctica



Nazca-Antarctica-Pacific TJ platelet



Easter Platelet Pacific-Nazca



Cocos-Nazca-Pacific TJ platelet

