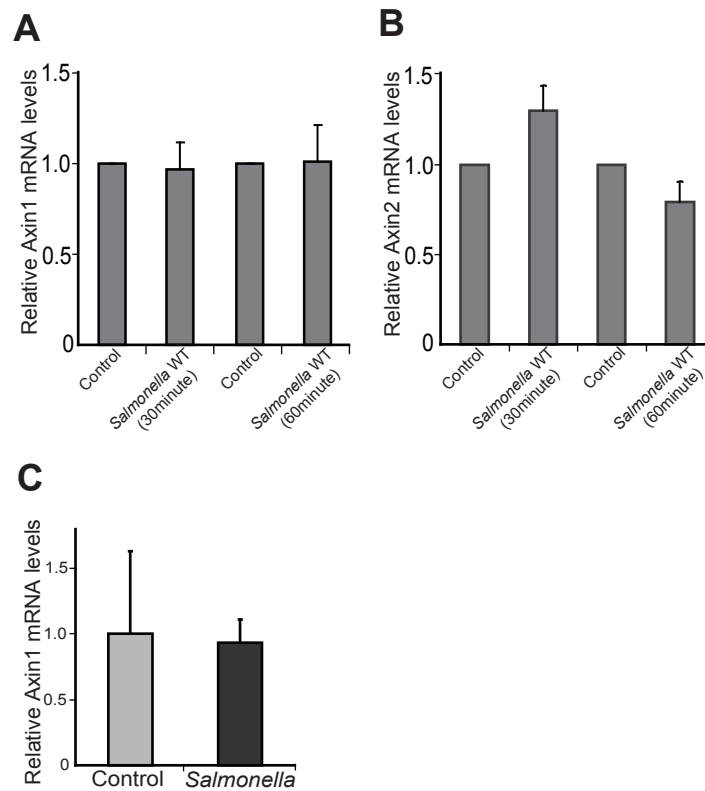


**Figure S1**



**Figure S1.** Pathogenic *Salmonella* decreases Axin 1 protein expression but not mRNA expression in the host cells. (A) Axin1 mRNA expression in intestinal epithelial HCT116 cells colonized with *Salmonella*. Cells were incubated with *S. Typhimurium* wild-type (WT) for 30 minutes, washed, and incubated in fresh DMEM for 1 hour. (B) *Salmonella* did not decrease Axin2 mRNA expression in HCT116 cells. (C) Axin1 mRNA is not altered by pathogenic WT *Salmonella* in intestinal epithelial cells in vivo. *Salmonella* did not decrease Axin1 mRNA expression in vivo. Data are expressed as mean  $\pm$  SD. n=3 mice/group.