

1 **Supplemental Figure Legends**

2

3 **Figures S1-S5** – Geographic distribution and range overlap across the Estrildid finches

4 Clades are in sequence following the order established in Table 1: S1) Grassfinches, S2)

5 Munias, S3) Parrotfinches, S4) Pytilias, Cordon-bleus, and Firefinches, and S5) Adavats,

6 Amadinas, and Quailfinches. Data come from birdlife.org and were analyzed using the R

7 package ‘raster’ (R Core Team 2014).

8 a) Geographic distribution of all species within the 5 examined clades. Range overlap is

9 colored by the total number of species within that clade which co-occur within each 1°

10 longitude by 1° latitude square.

11 b) Pairwise range overlap between all species within each clade – following the data in

12 Table S5. Off-diagonal elements are the proportion of the species' range in the column

13 entry that overlaps the range of the species in the row entry. Species are arranged from top

14 to bottom from youngest to most basal following the topology of Sorenson (*pers. comm.*).

15

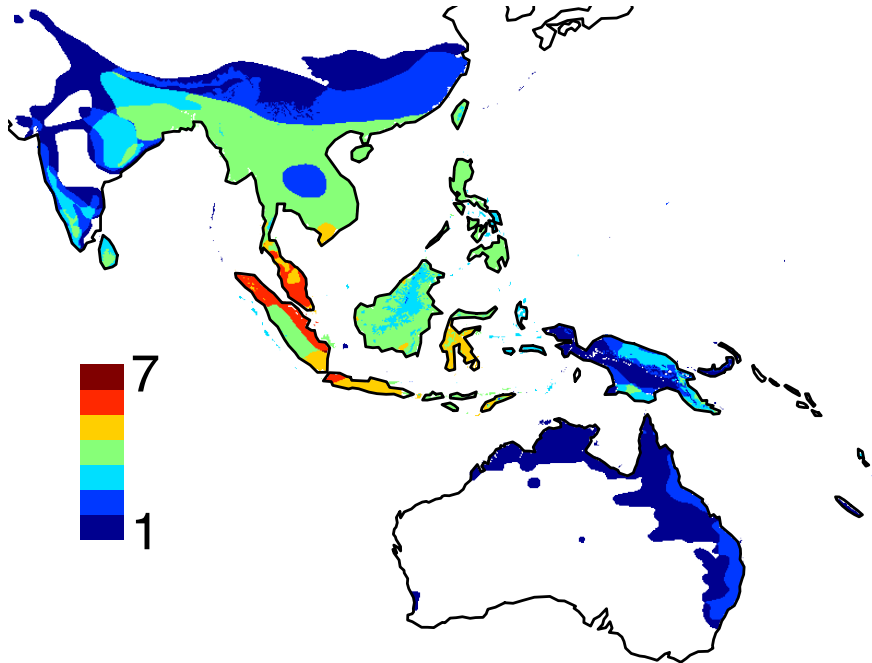
16 **Figure S6** – Maximum clade credibility tree for the 32 Estrildid finch species with

17 karyotype data used in this study and outgroup time-calibration taxa. Posterior probability

18 support for each node is 100% where listed (*) except as noted.

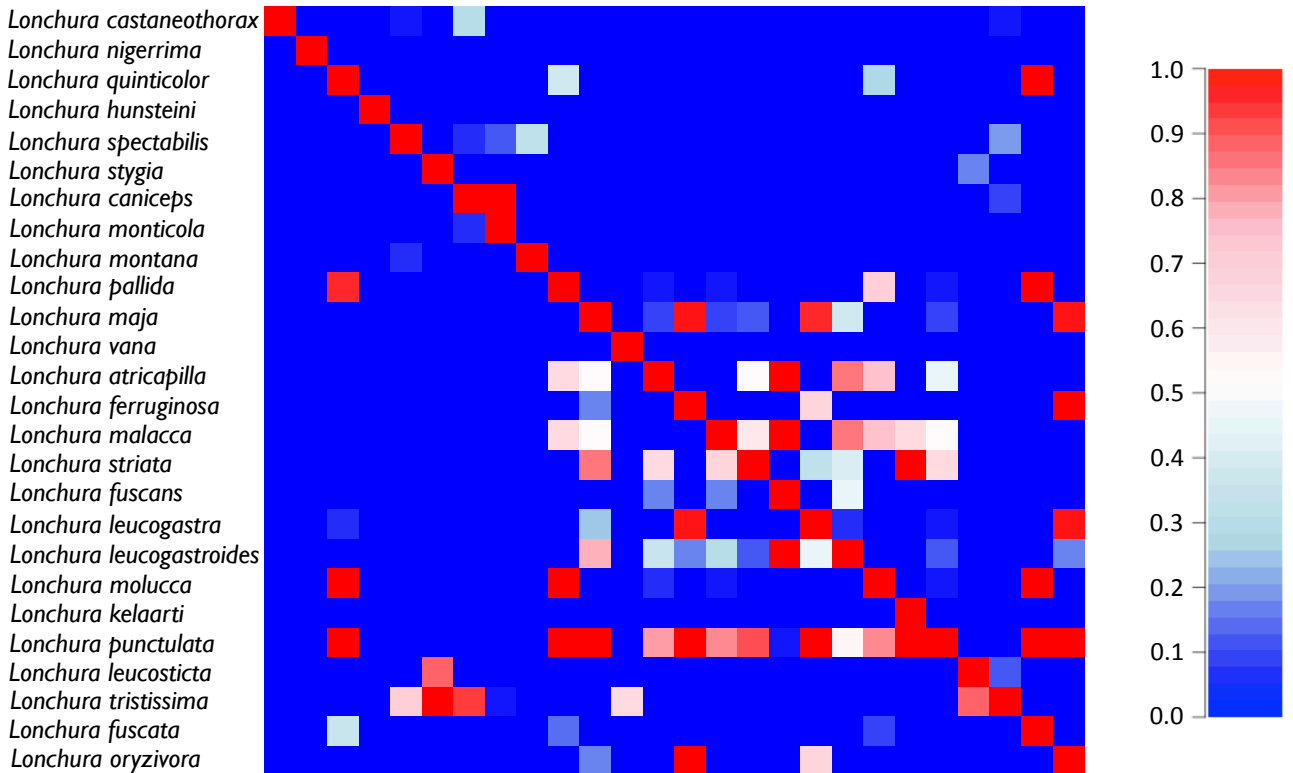
S2 - Munias

a)



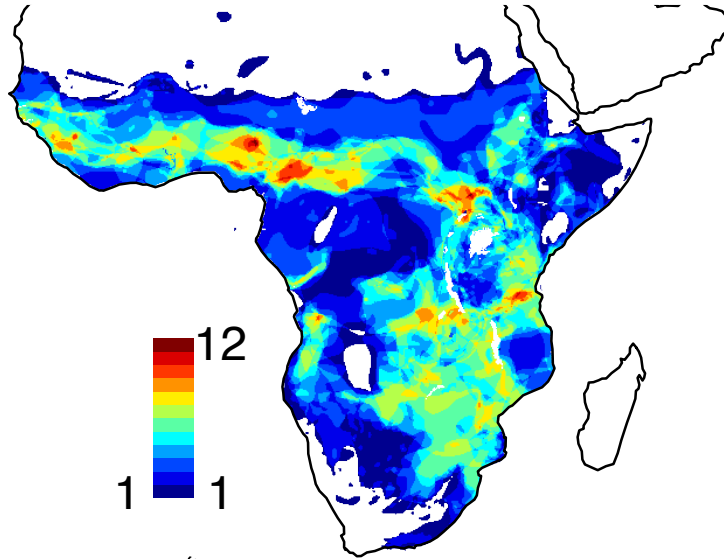
b)

Lonchura castaneothorax
Lonchura nigerrima
Lonchura quincolor
Lonchura hunsteini
Lonchura spectabilis
Lonchura stygia
Lonchura caniceps
Lonchura monticola
Lonchura montana
Lonchura pallida
Lonchura maja
Lonchura vana
Lonchura atricapilla
Lonchura ferruginosa
Lonchura malacca
Lonchura striata
Lonchura fuscans
Lonchura leucogastra
Lonchura leucogastroides
Lonchura molucca
Lonchura kelaarti
Lonchura punctulata
Lonchura leucosticta
Lonchura tristissima
Lonchura fuscata
Lonchura oryzivora



S4 – Pytilias, Cordon-bleus, and Firefinches

a)



b)

