

Supplementary Online Content

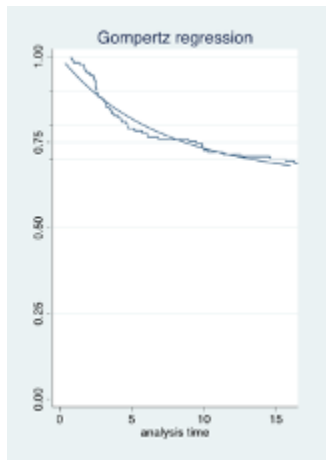
Winn AN, Atallah E, Cortes J, et al. Estimated savings after stopping Tyrosine Kinase Inhibitor treatment among patients with chronic myeloid leukemia. *JAMA Netw Open*. 2023;6(12):e2347950. doi: 0.1001/jamanetworkopen.2023.47950

eFigure 1. Time to TKI Discontinuation Comparisons Between Nonparametric and Parametric Model in the First 18 Months Based on the LAST Study

eFigure 2. Time to TKI Discontinuation Comparison Between Nonparametric and Parametric Model After Month 18 Based on the LAST Study

This supplementary material has been provided by the authors to give readers additional information about their work.

eFigure 1. Time to TKI Discontinuation Comparisons Between Nonparametric and Parametric Model in the First 18 Months Based on the LAST Study



eFigure 2. Time to TKI Discontinuation Comparison Between Nonparametric and Parametric Model After Month 18 Based on the LAST Study

