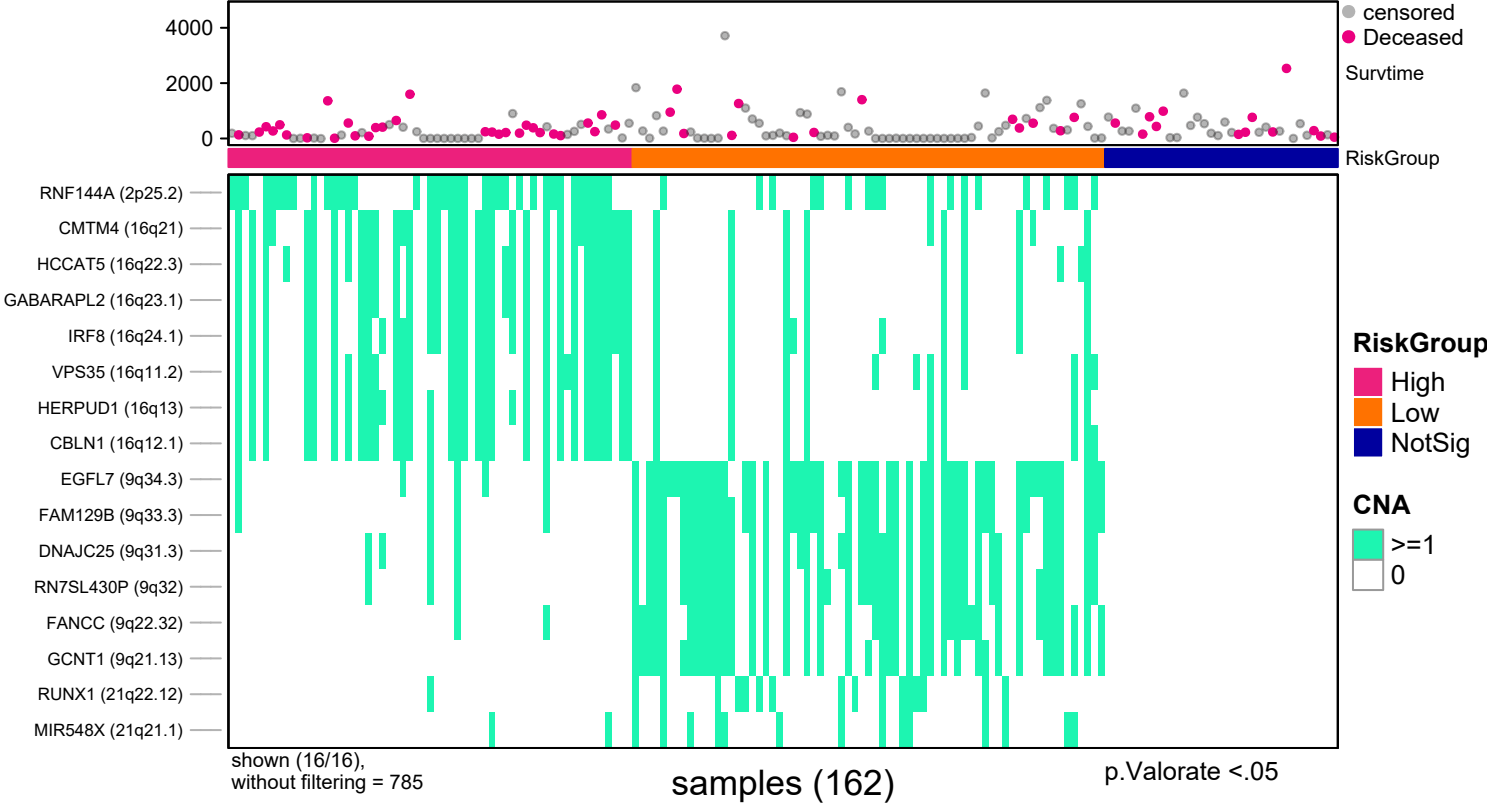
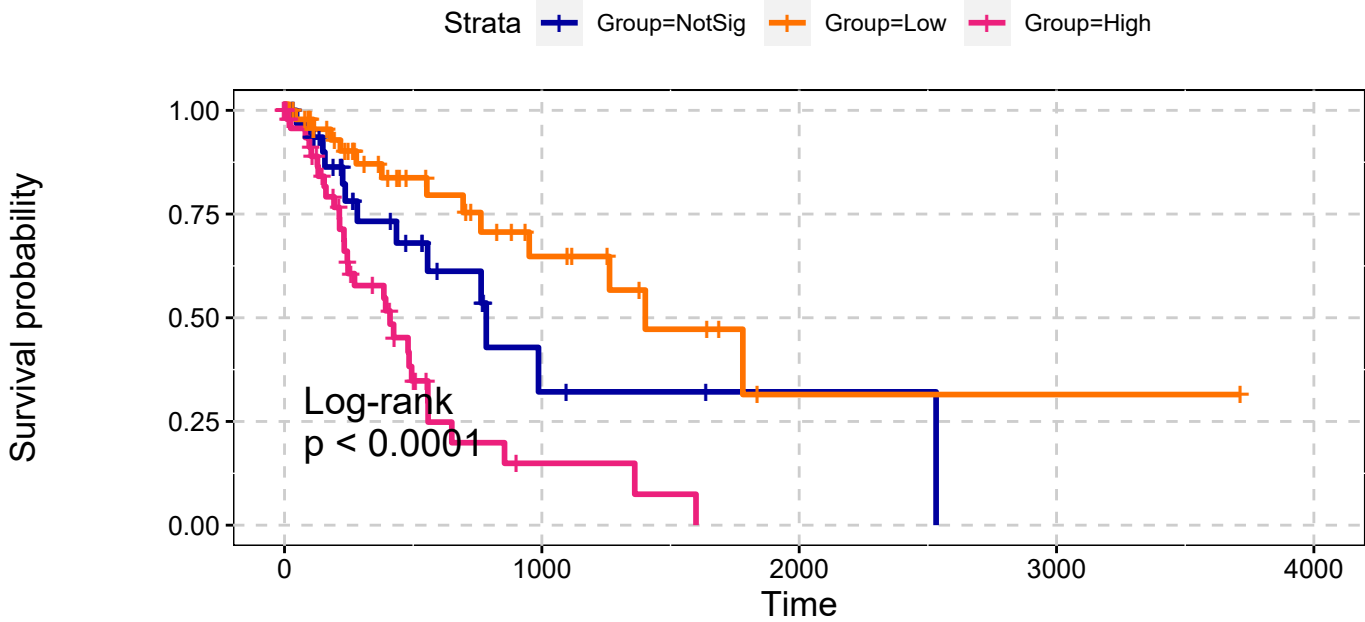


ESCA
All Amplifications
Single Data Signature



ESCA
All Amplifications
Single Data Signature

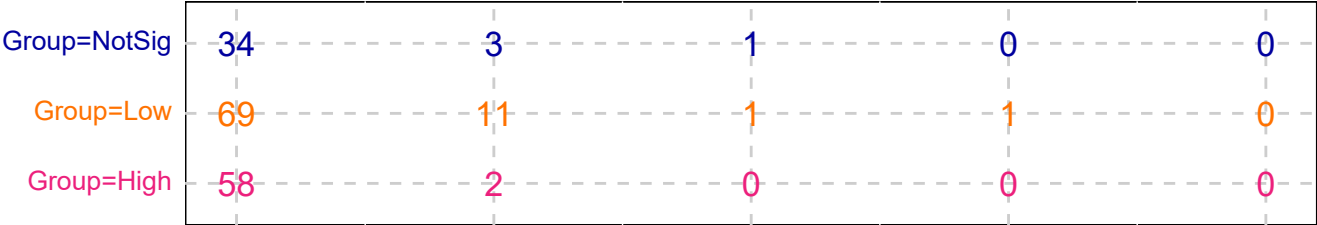


p.Valorate <.05

explanatory	beta	HR	L95	U95	p
Low	-0.65	0.52	0.24	1.13	0.10
High	0.87	2.39	1.23	4.66	0.01

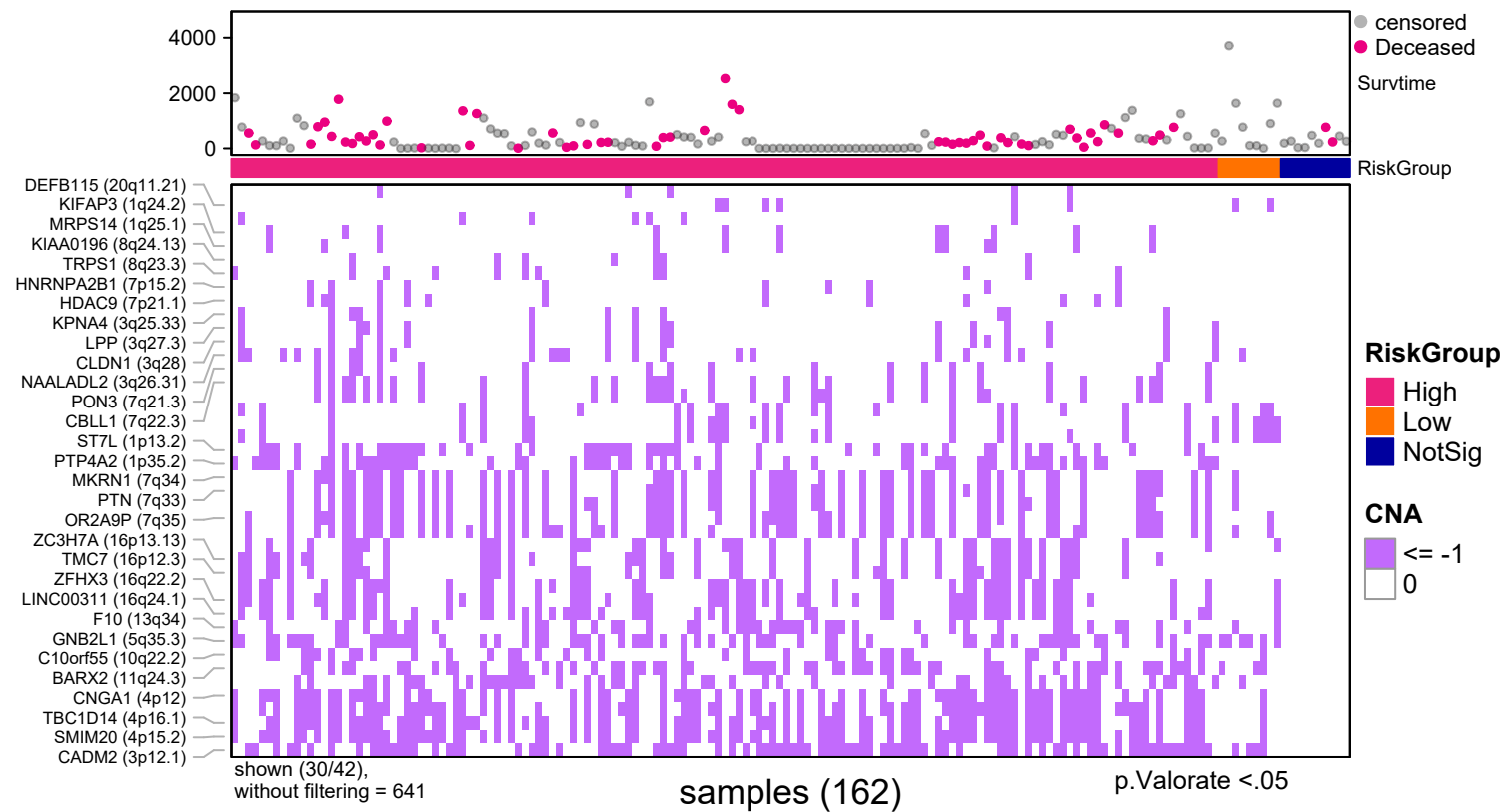
n= 162, number of events =56
Score(logrank) test = p <.0001

Number at risk

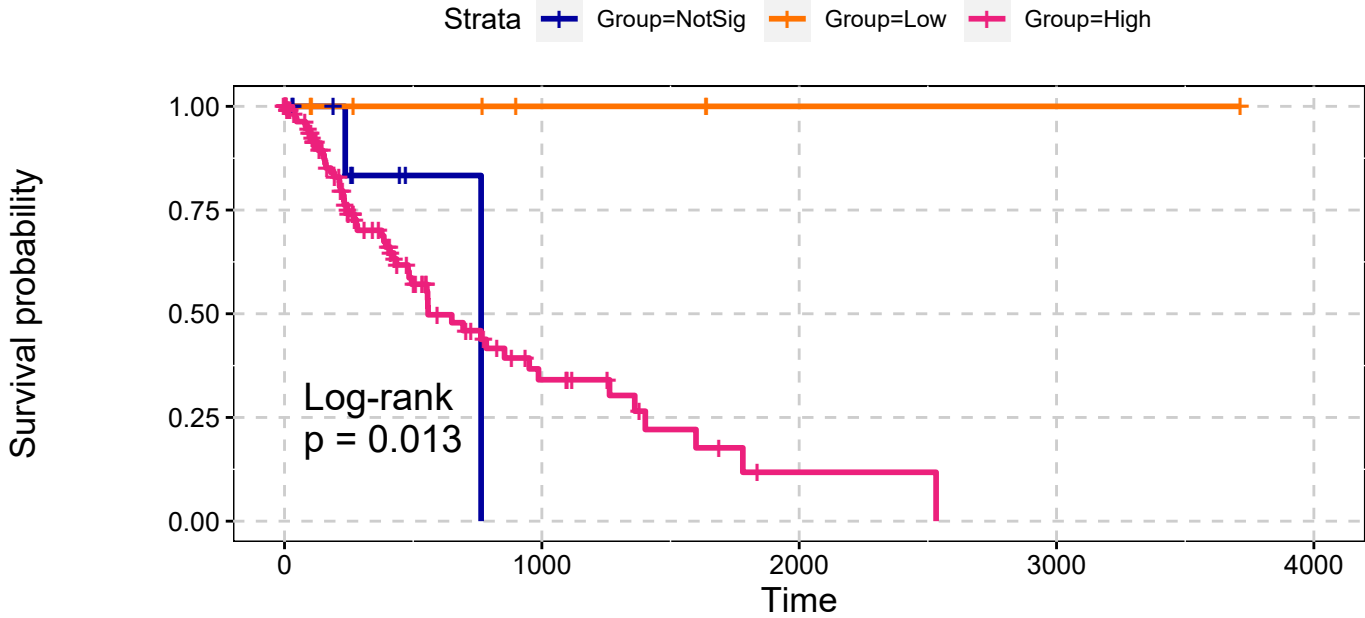


p.Valorate <.05

ESCA
All Deletions
Single Data Signature



ESCA
All Deletions
Single Data Signature

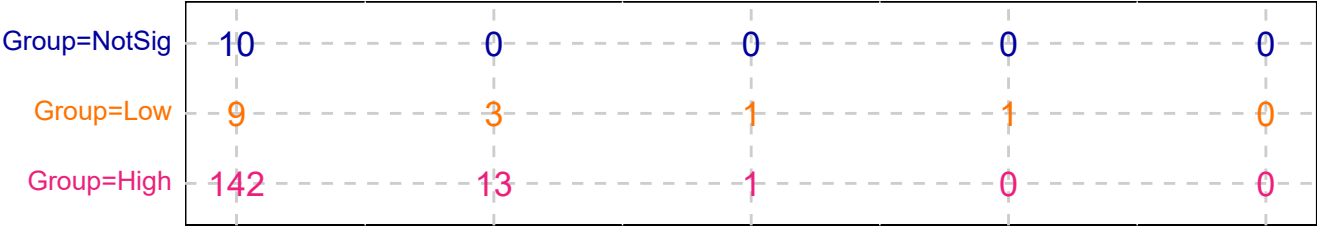


explanatory	beta	HR	L95	U95	p
Low	-17.96	0.00	0.00	Inf	1.00
High	0.41	1.50	0.36	6.23	0.57

n= 162, number of events =56
Score(logrank) test = 0.013

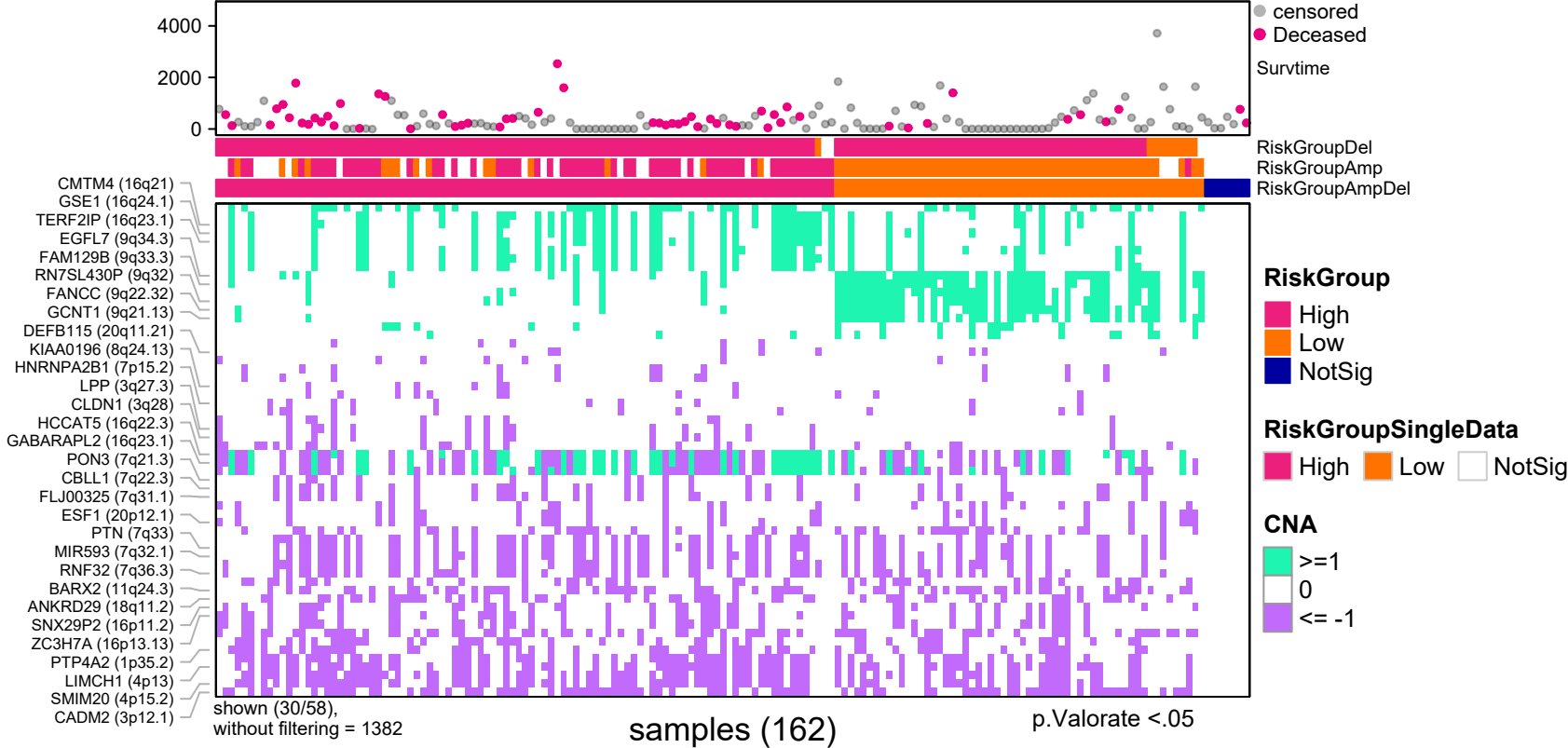
p.Valorate <.05

Number at risk



p.Valorate <.05

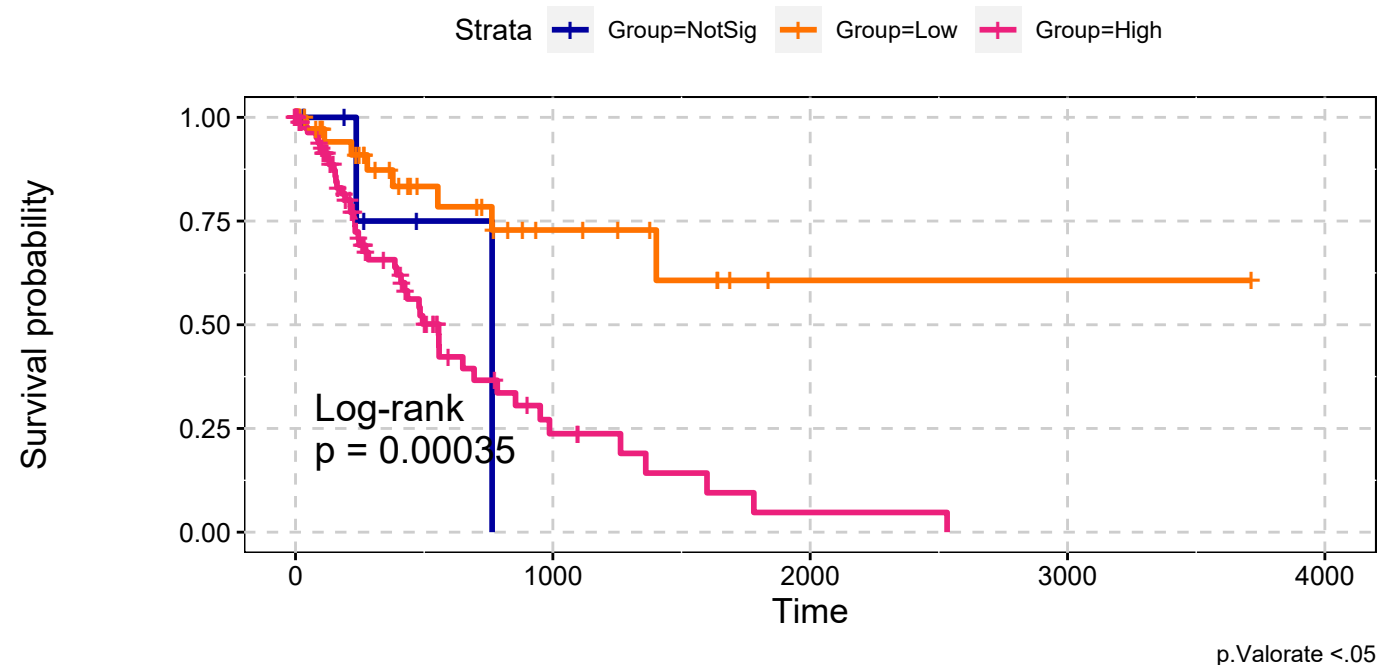
ESCA
All Amplifications & All Deletions
Max Sum Significance Signatures



ESCA

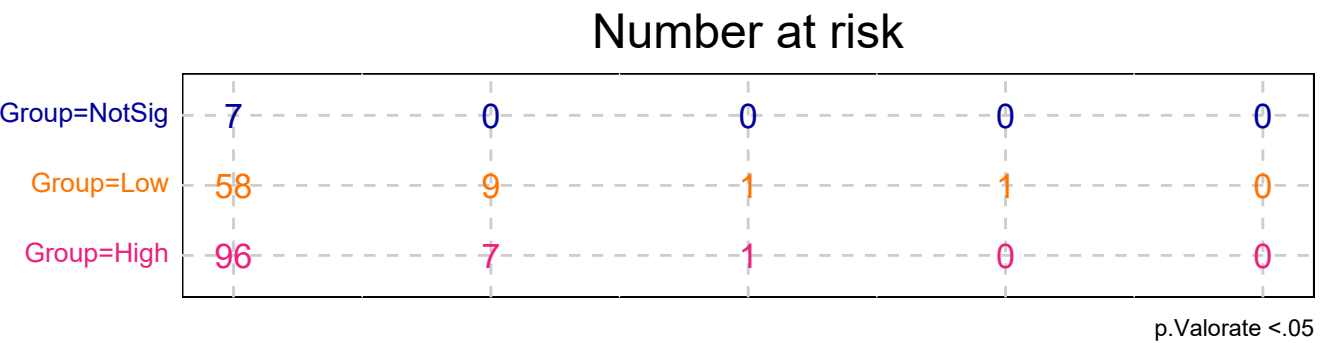
All Amplifications & All Deletions

Max Sum Significance Signatures

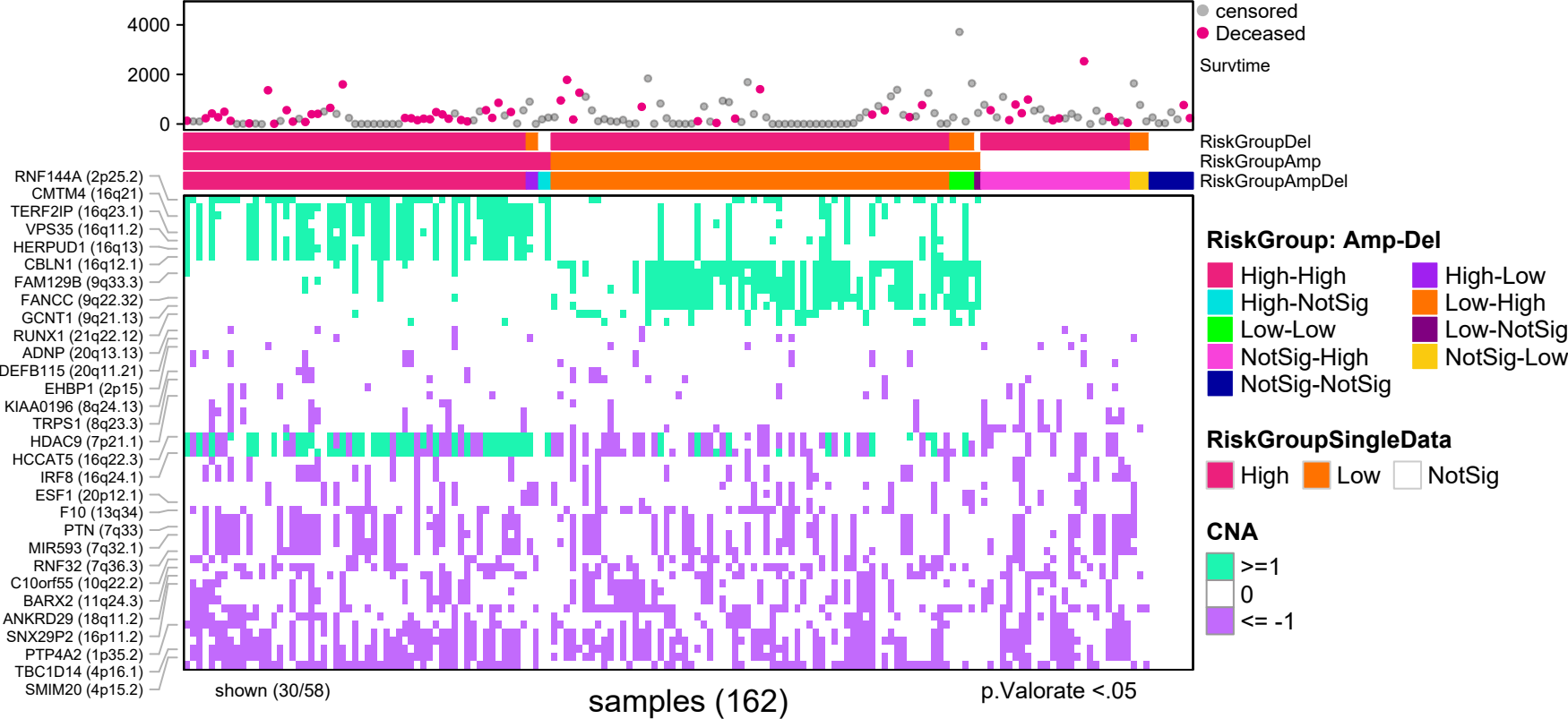


explanatory	beta	HR	L95	U95	p
Low	-1.17	0.31	0.06	1.48	0.14
High	0.26	1.29	0.31	5.36	0.72

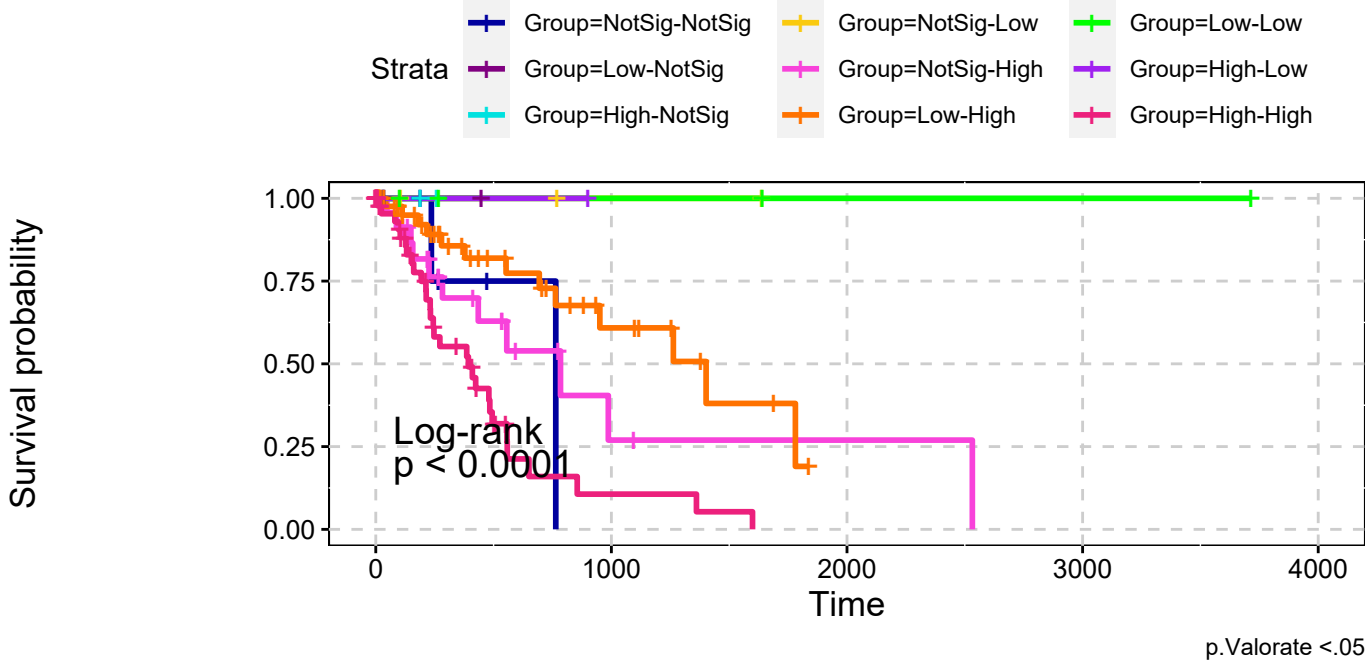
n= 162, number of events =56
Score(logrank) test = 0



ESCA
All Amplifications & All Deletions
combining signatures



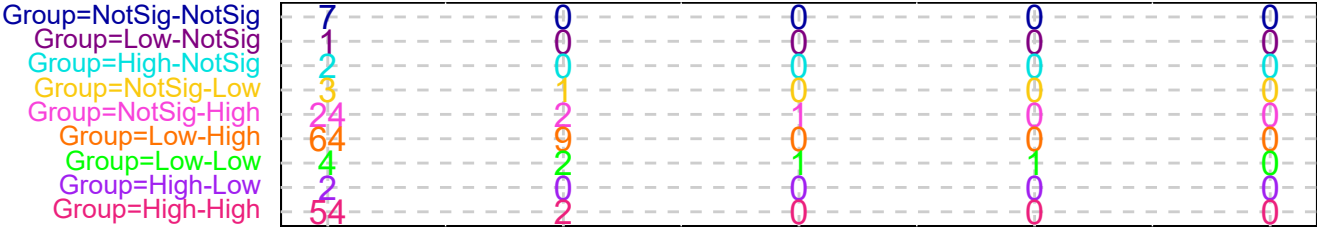
ESCA
All Amplifications & All Deletions
combining signatures



explanatory	beta	HR	L95	U95	p
Low-NotSig	-18.38	0.00	0.00	Inf	1.00
High-NotSig	-18.35	0.00	0.00	Inf	1.00
NotSig-Low	-18.62	0.00	0.00	Inf	1.00
NotSig-High	-0.16	0.86	0.19	3.94	0.84
Low-High	-0.76	0.47	0.10	2.11	0.32
Low-Low	-18.75	0.00	0.00	Inf	1.00
High-Low	-18.53	0.00	0.00	Inf	1.00
High-High	0.69	1.99	0.47	8.36	0.35

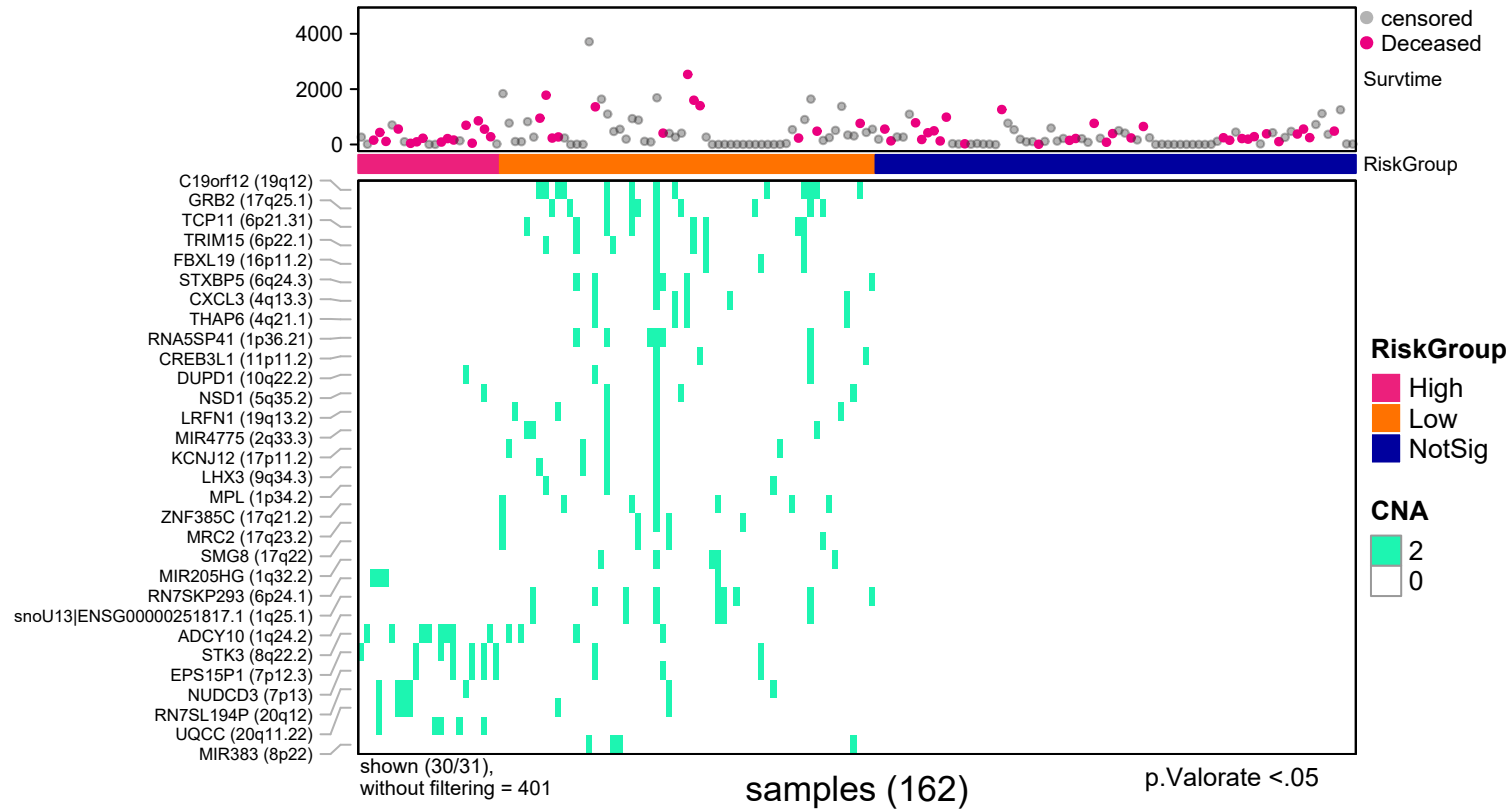
n= 162, number of events =56
Score(logrank) test = $p < .0001$

Number at risk

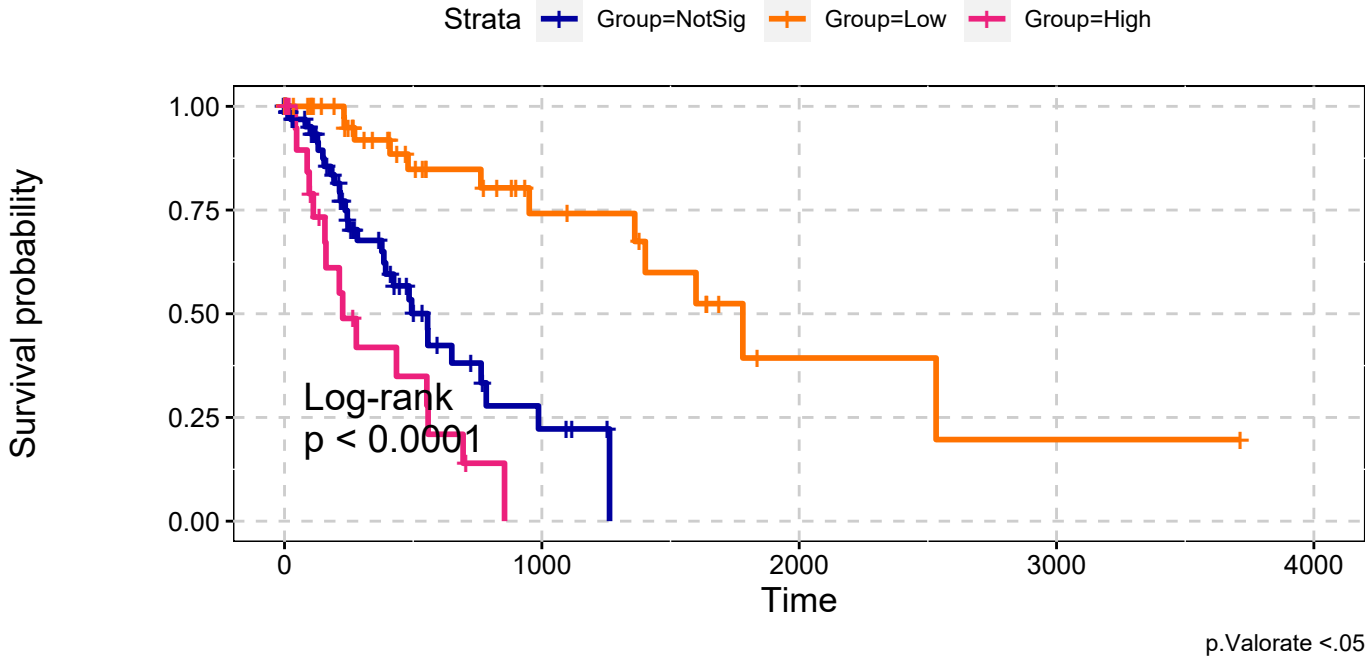


RiskGroup: Amp-Del, p.Valorate <.05

ESCA
Deep Amplifications
Single Data Signature

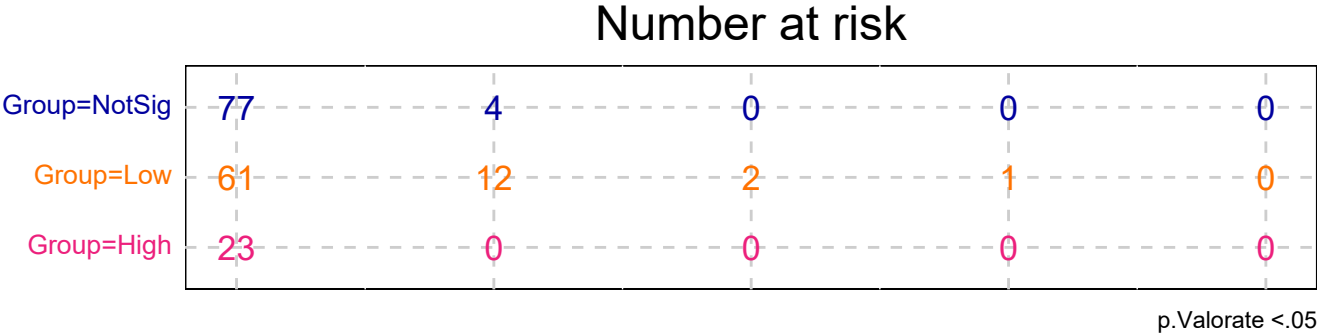


ESCA
Deep Amplifications
Single Data Signature

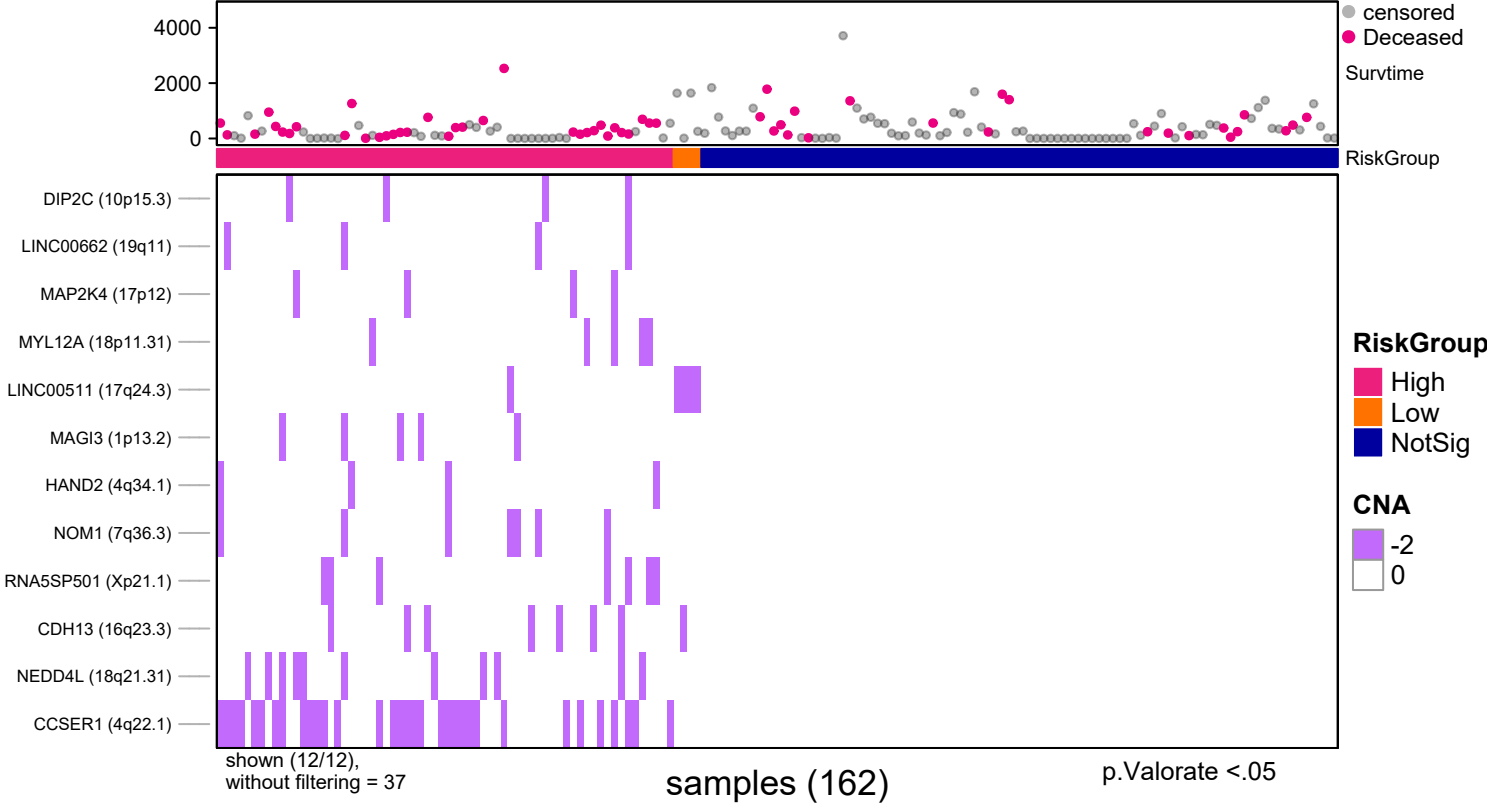


explanatory	beta	HR	L95	U95	p
Low	-1.77	0.17	0.07	0.40	0.00
High	0.72	2.06	1.10	3.86	0.02

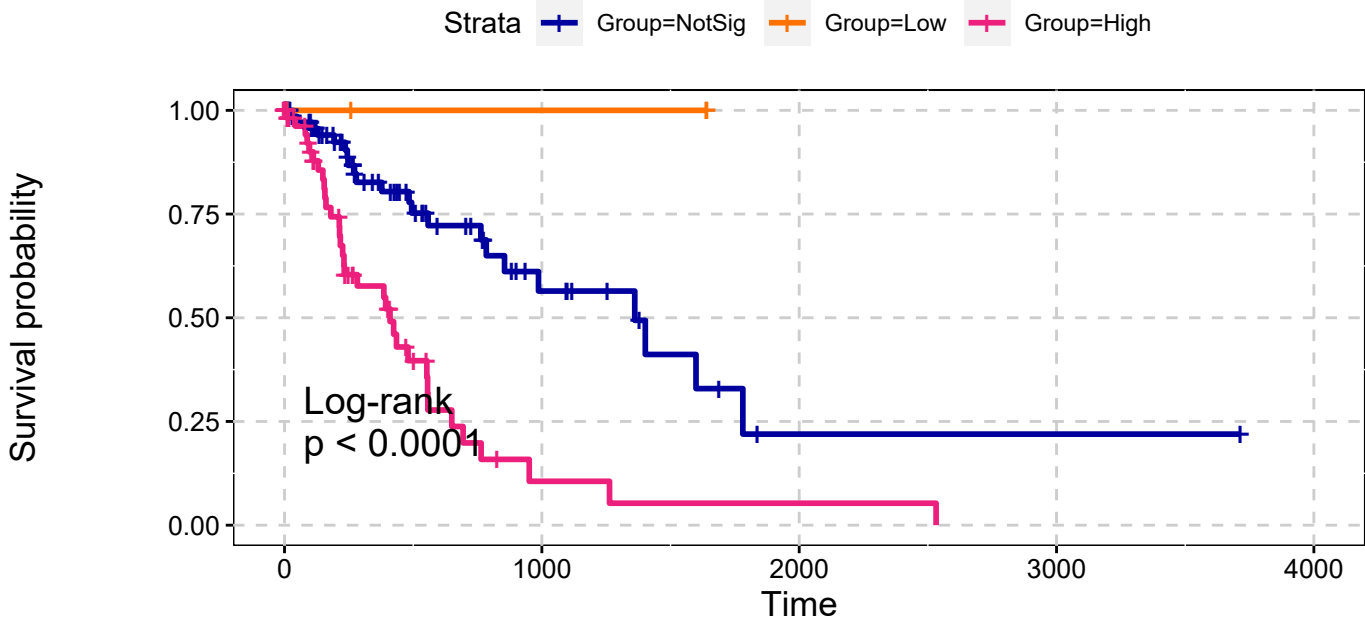
n= 162, number of events =56
Score(logrank) test = $p < .0001$



ESCA
Deep Deletions
Single Data Signature



ESCA
Deep Deletions
Single Data Signature

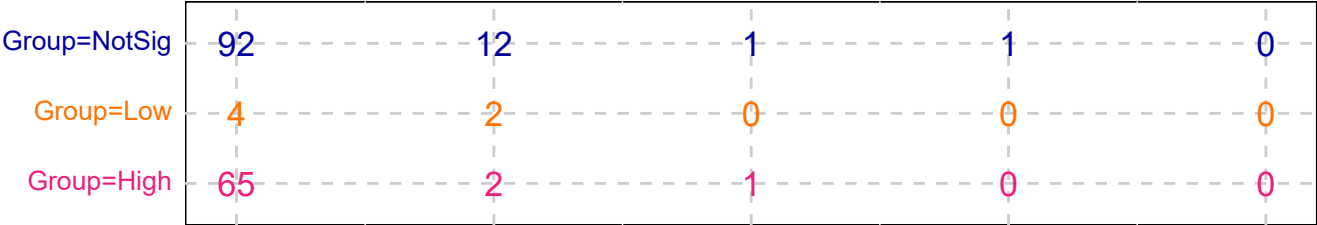


explanatory	beta	HR	L95	U95	p
Low	-16.90	0.00	0.00	Inf	1.00
High	1.26	3.52	2.03	6.10	0.00

n= 162, number of events =56
Score(logrank) test = p <.0001

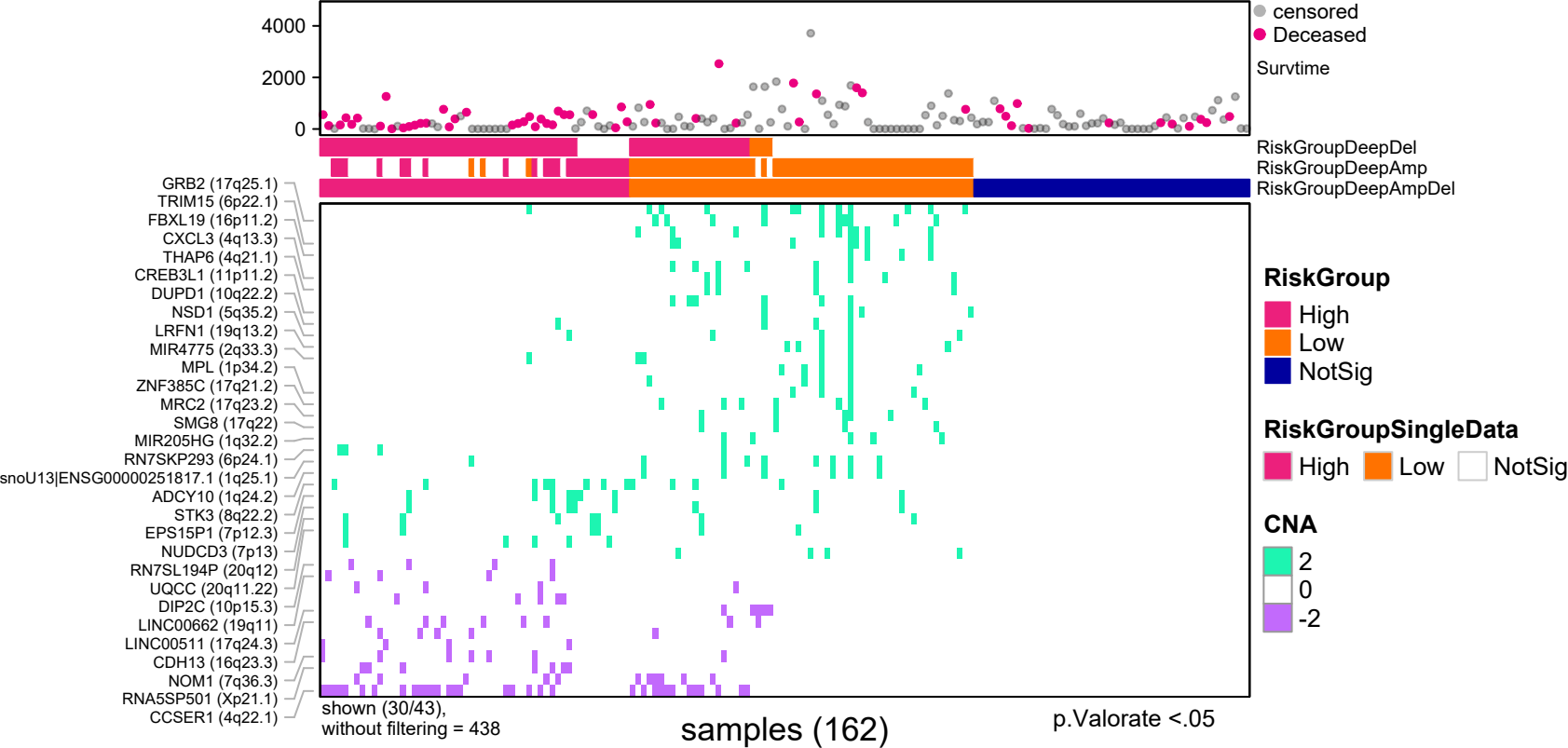
p.Valorate <.05

Number at risk



p.Valorate <.05

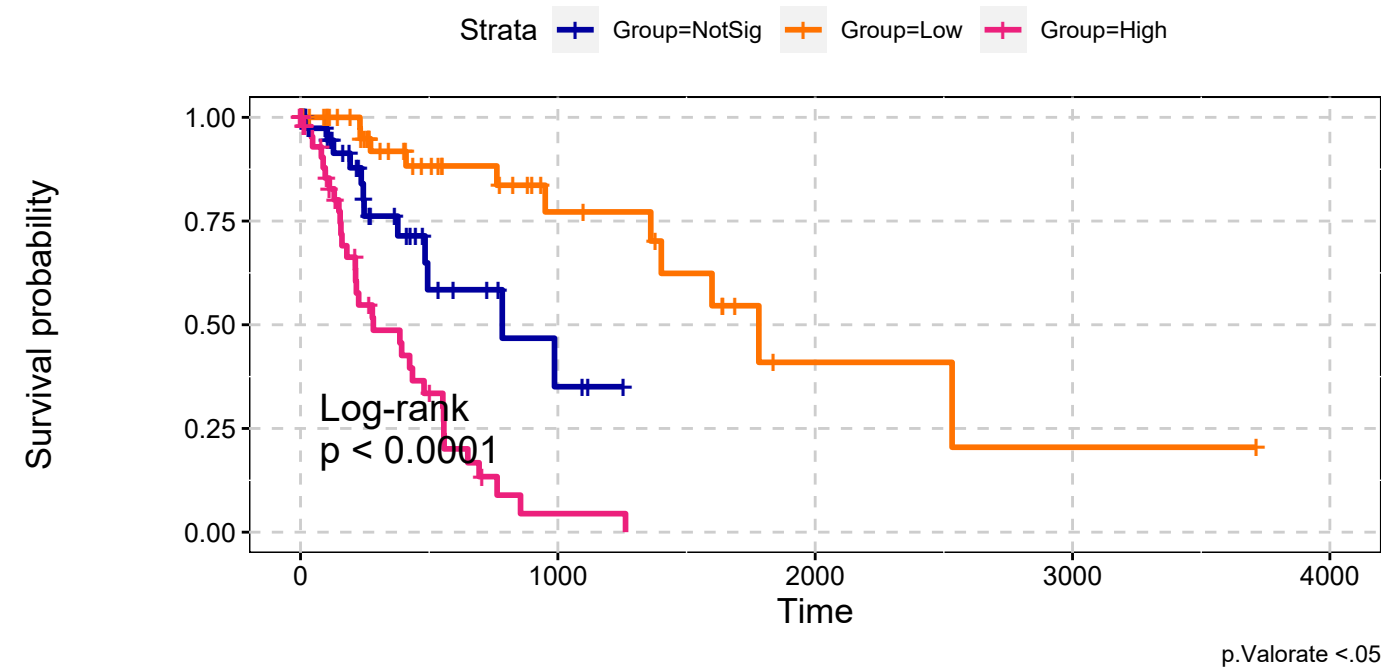
ESCA
Deep Amplifications & Deep Deletions
Max Sum Significance Signatures



ESCA

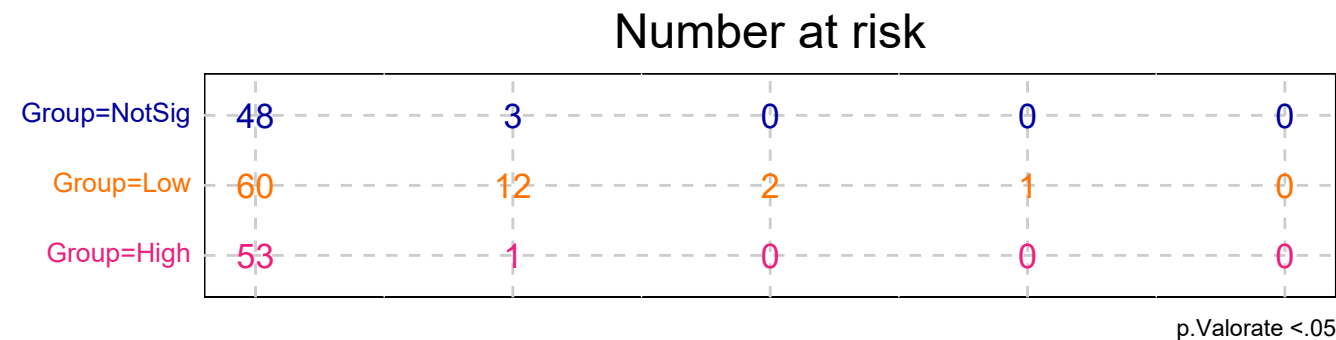
Deep Amplifications & Deep Deletions

Max Sum Significance Signatures

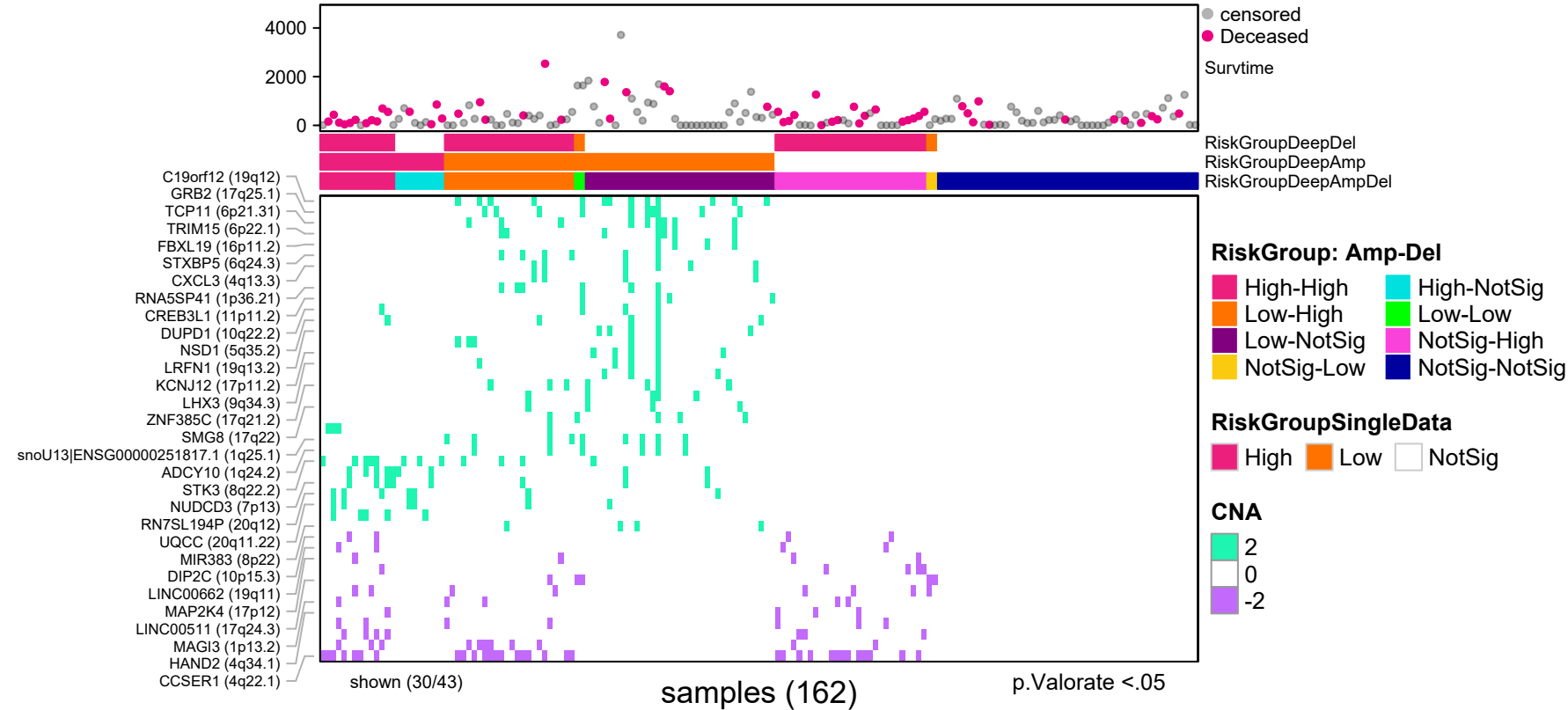


explanatory	beta	HR	L95	U95	p
Low	-1.45	0.24	0.09	0.64	0.00
High	1.13	3.10	1.59	6.05	0.00

n= 162, number of events =56
Score(logrank) test = p <.0001

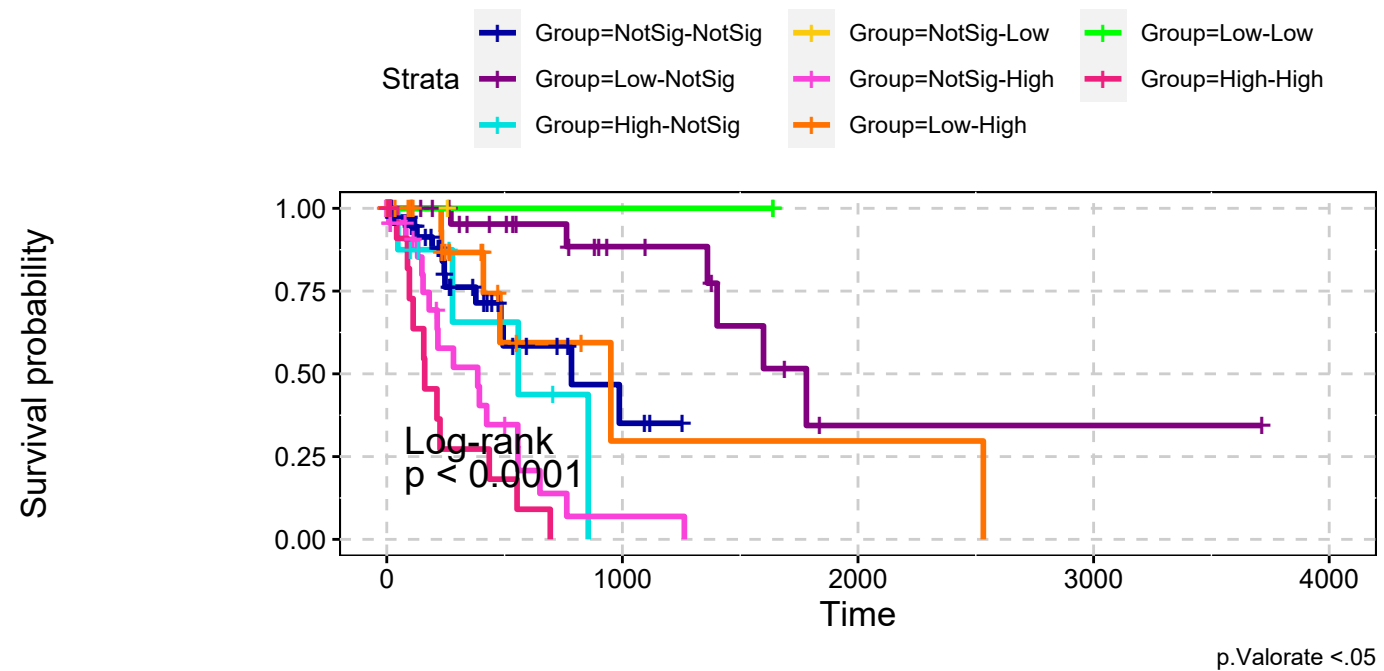


ESCA
Deep Amplifications & Deep Deletions
combining signatures



ESCA

Deep Amplifications & Deep Deletions combining signatures



explanatory	beta	HR	L95	U95	p
Low-NotSig	-1.68	0.19	0.06	0.58	0.00
High-NotSig	0.47	1.60	0.51	5.00	0.42
NotSig-Low	-18.19	0.00	0.00	Inf	1.00
NotSig-High	1.08	2.95	1.40	6.23	0.00
Low-High	-0.52	0.60	0.20	1.77	0.35
Low-Low	-18.23	0.00	0.00	Inf	1.00
High-High	1.74	5.67	2.45	13.12	0.00

n= 162, number of events =56
Score(logrank) test = p <.0001

