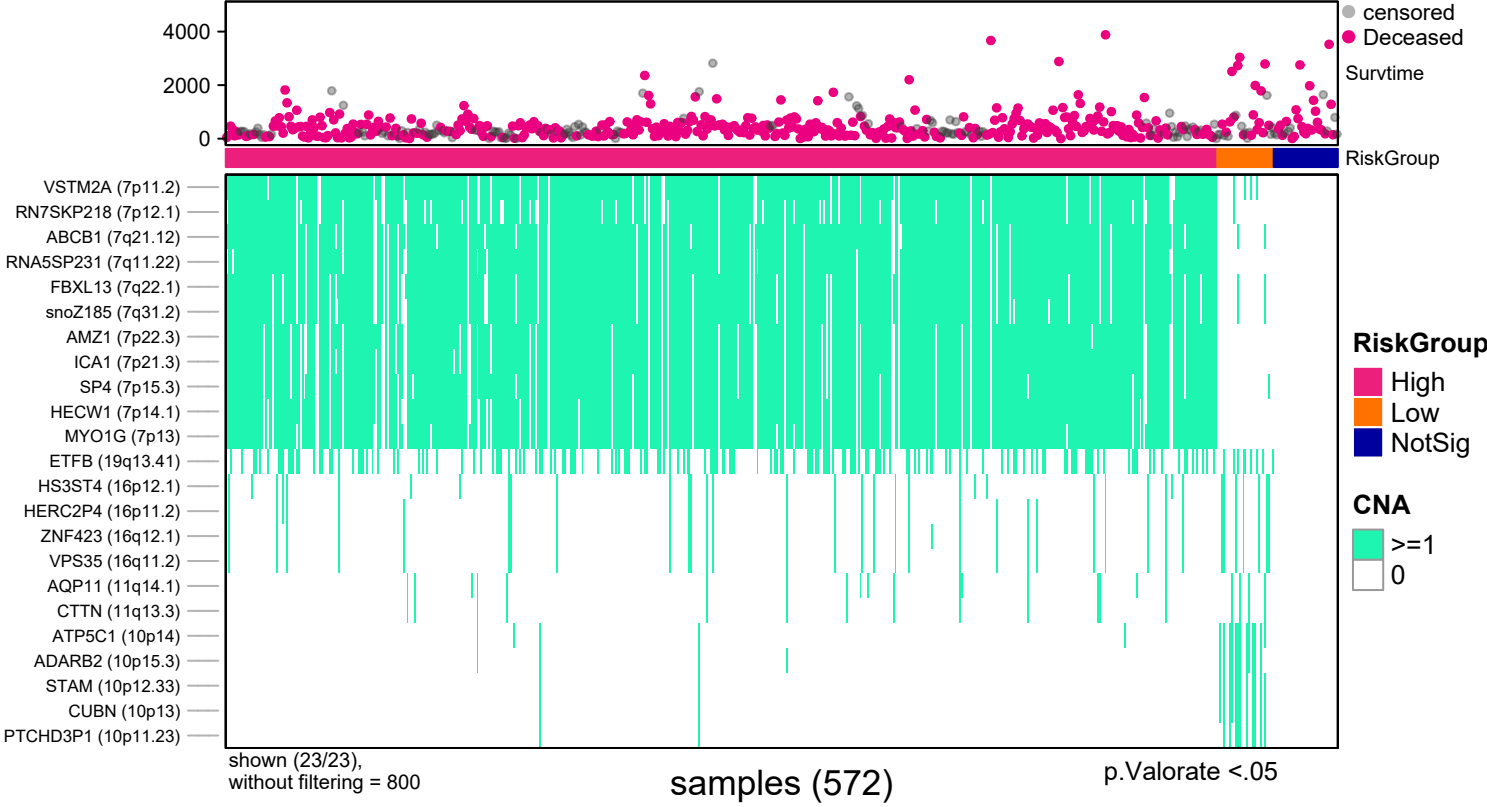
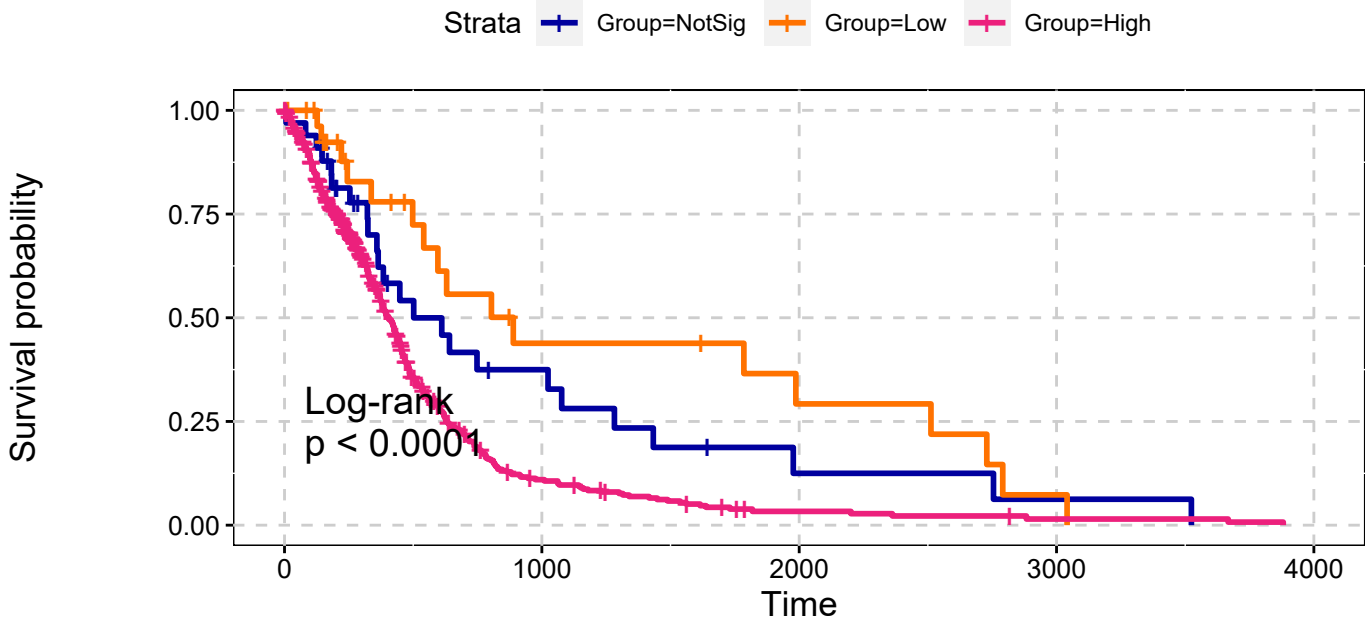


GBM
All Amplifications
Single Data Signature



GBM
All Amplifications
Single Data Signature

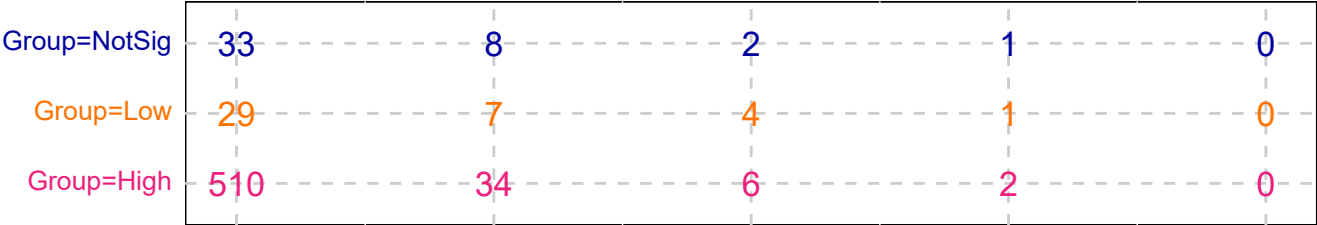


explanatory	beta	HR	L95	U95	p
Low	-0.39	0.68	0.36	1.26	0.22
High	0.51	1.67	1.10	2.53	0.02

n= 572, number of events =430
Score(logrank) test = p <.0001

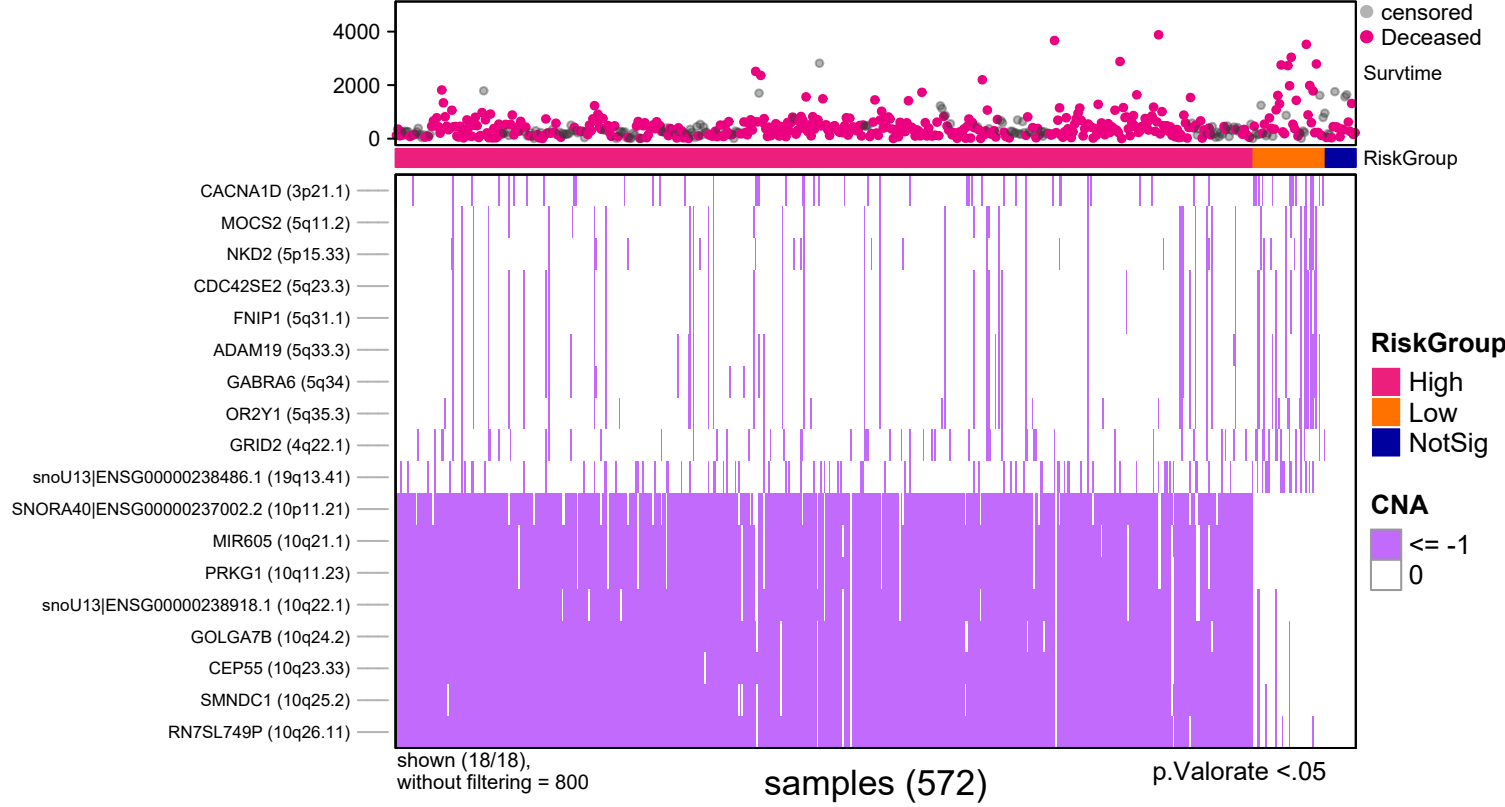
p.Valorate <.05

Number at risk

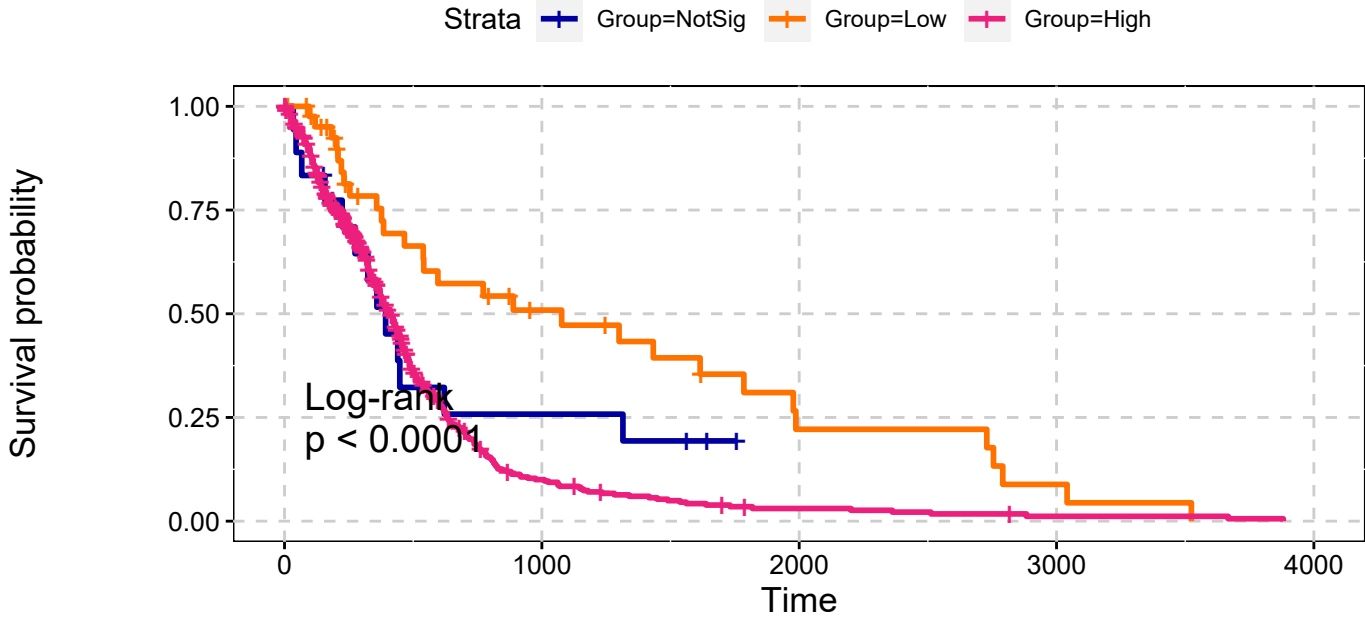


p.Valorate <.05

GBM
All Deletions
Single Data Signature



GBM
All Deletions
Single Data Signature

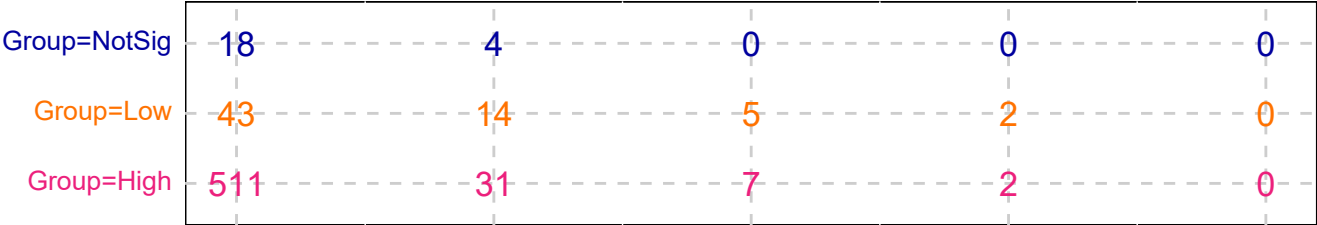


p.Valorate <.05

explanatory	beta	HR	L95	U95	p
Low	-0.55	0.58	0.30	1.12	0.10
High	0.33	1.39	0.80	2.42	0.25

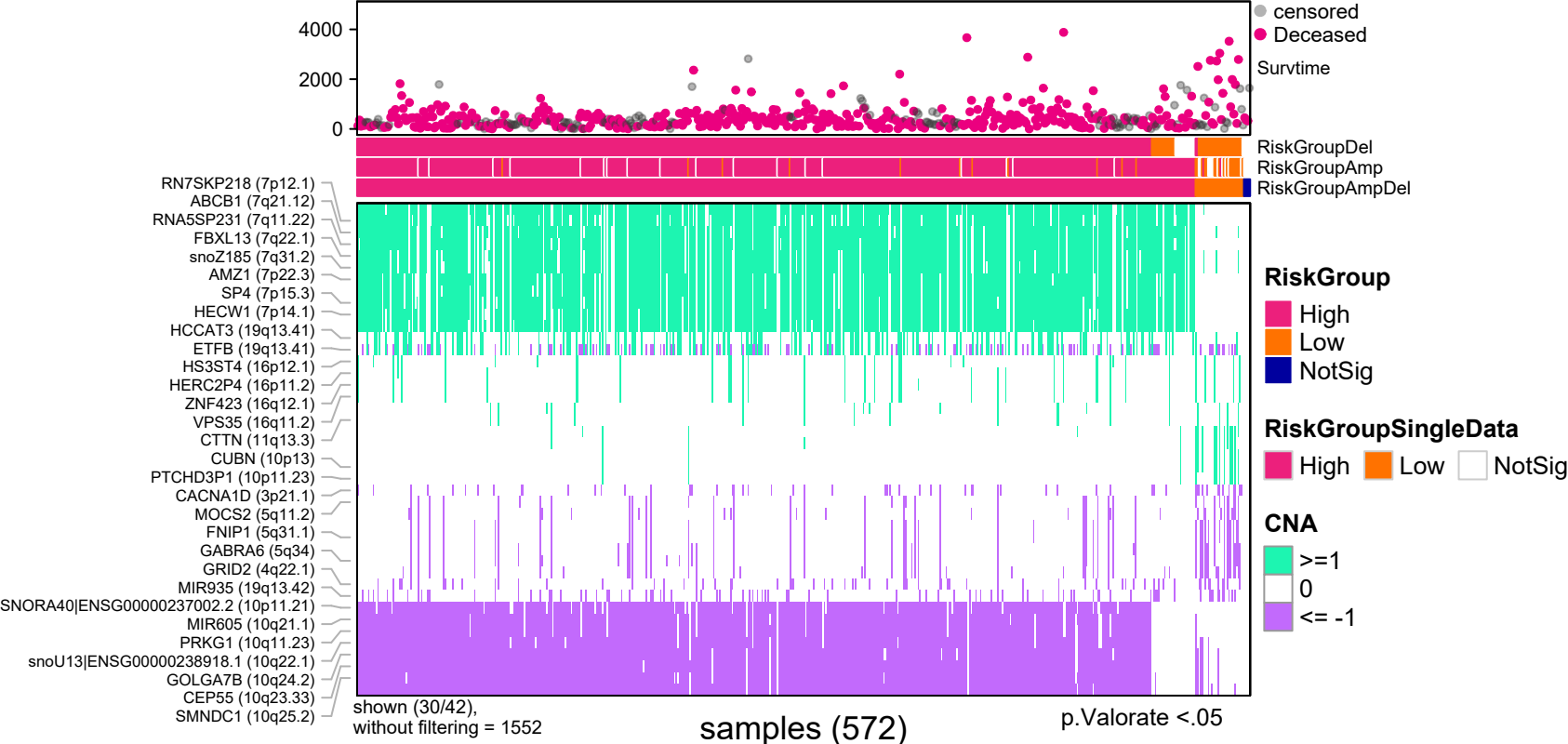
n= 572, number of events =430
Score(logrank) test = p <.0001

Number at risk

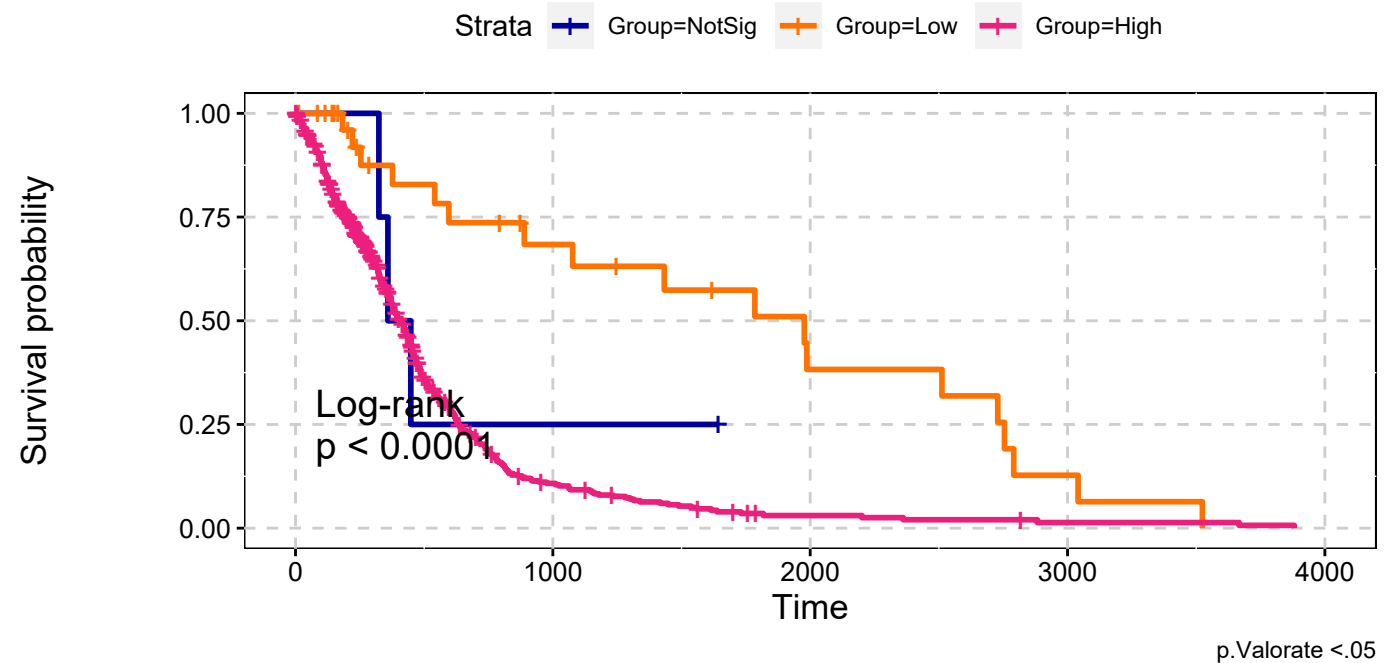


p.Valorate <.05

GBM
All Amplifications & All Deletions
Max Sum Significance Signatures

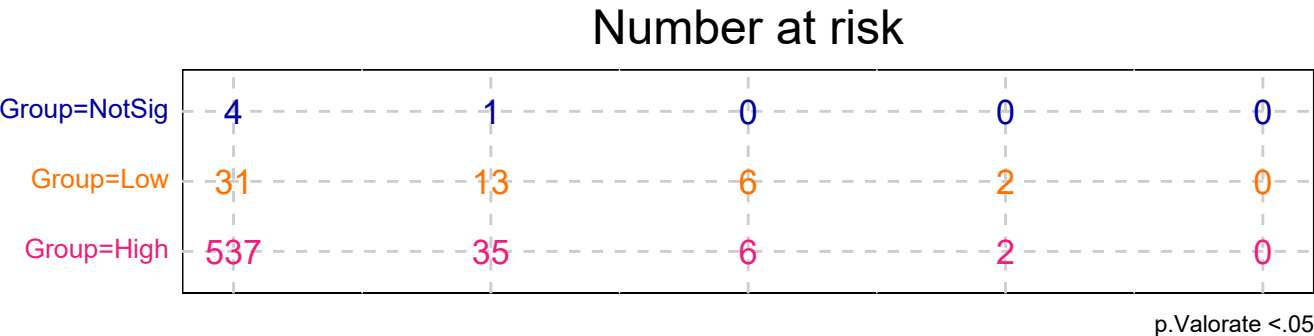


GBM
All Amplifications & All Deletions
Max Sum Significance Signatures

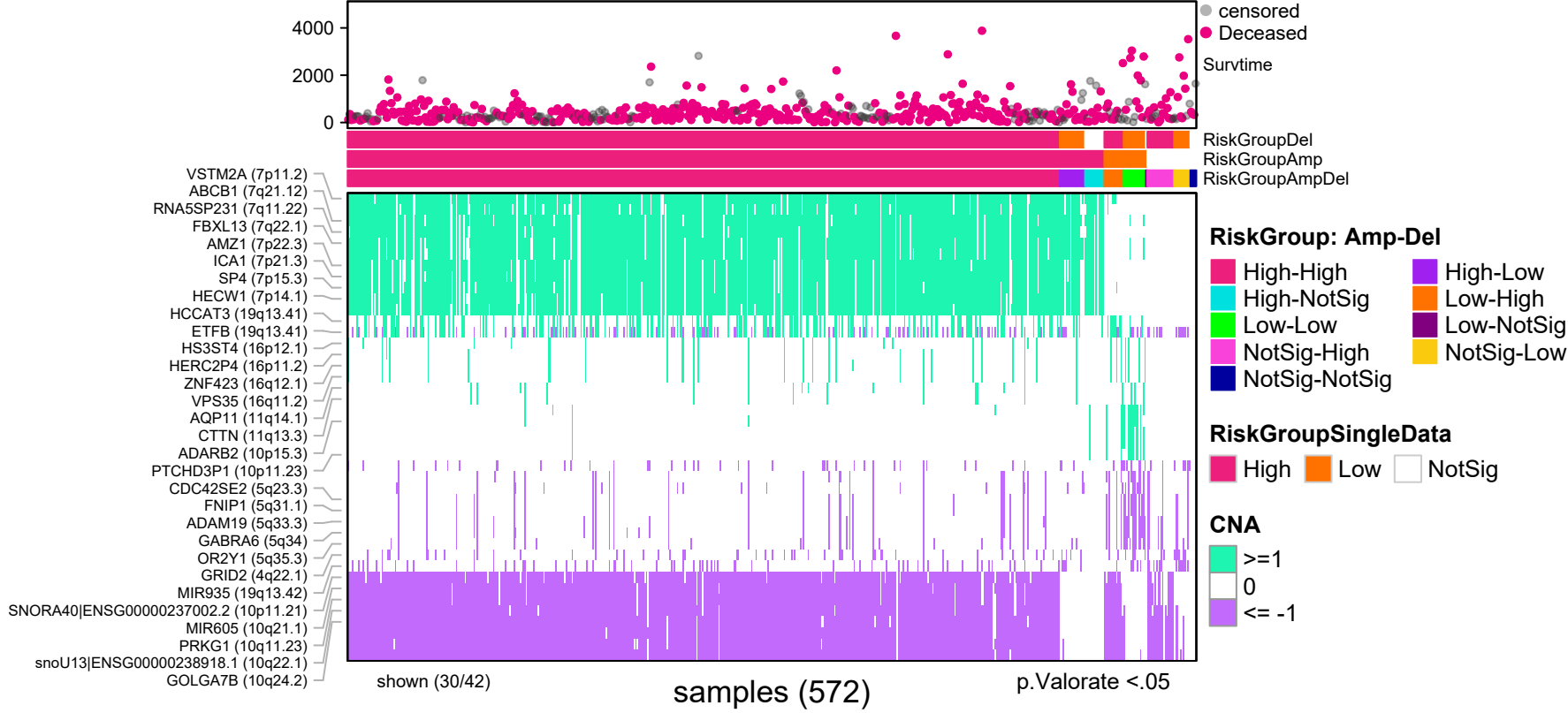


explanatory	beta	HR	L95	U95	p
Low	-0.72	0.49	0.14	1.66	0.25
High	0.50	1.64	0.53	5.13	0.39

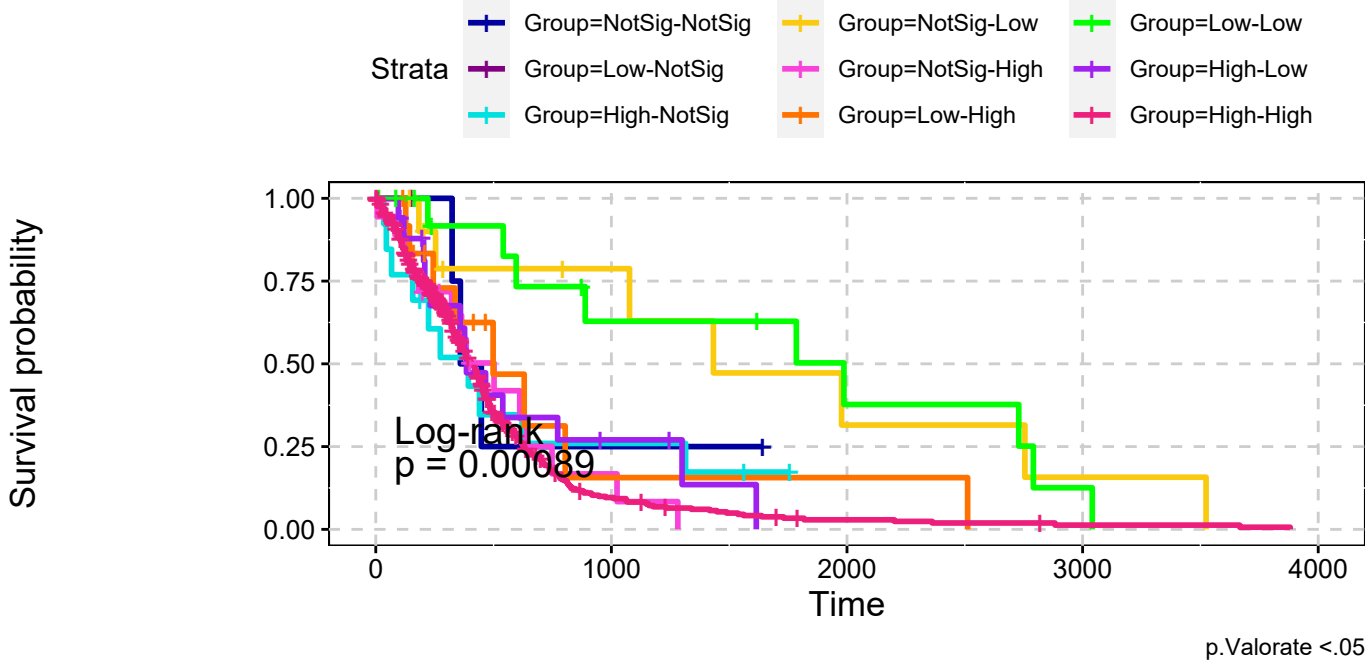
n= 572, number of events =430
Score(logrank) test = p <.0001



GBM
All Amplifications & All Deletions
combining signatures



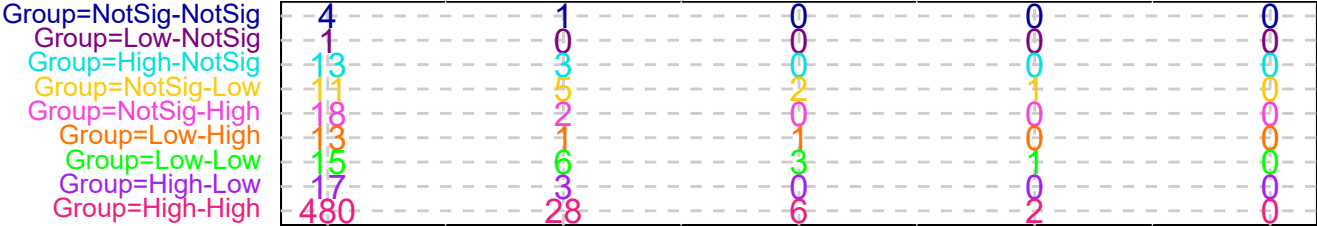
GBM
All Amplifications & All Deletions
combining signatures



explanatory	beta	HR	L95	U95	p
Low-NotSig	-11.57	0.00	0.00	Inf	0.99
High-NotSig	0.25	1.28	0.35	4.66	0.71
NotSig-Low	-0.64	0.53	0.14	2.05	0.36
NotSig-High	0.49	1.63	0.47	5.67	0.45
Low-High	0.11	1.12	0.30	4.24	0.87
Low-Low	-0.74	0.48	0.13	1.77	0.27
High-Low	0.21	1.23	0.35	4.33	0.74
High-High	0.51	1.67	0.54	5.22	0.38

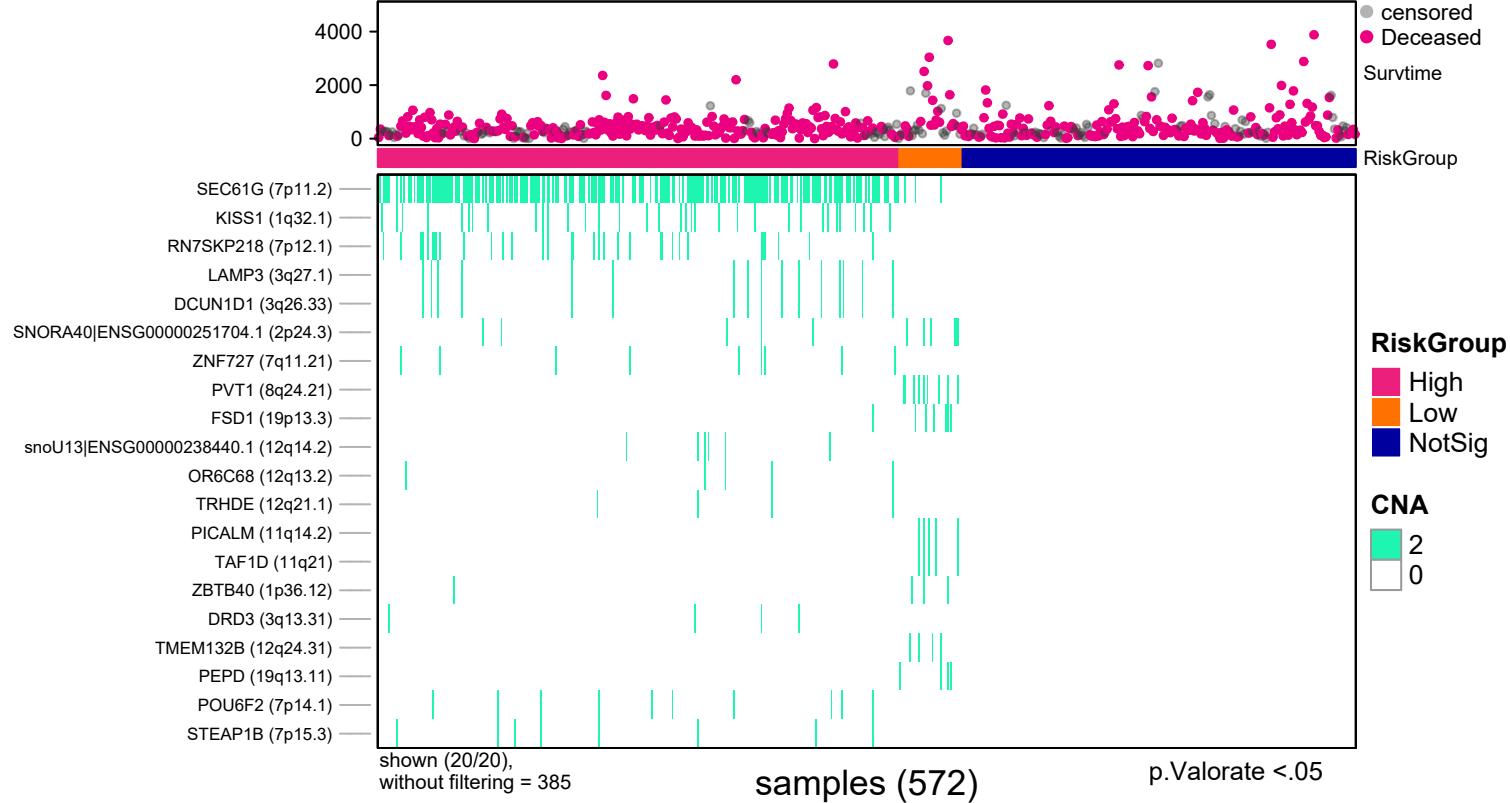
n= 572, number of events =430
Score(logrank) test = 0.001

Number at risk

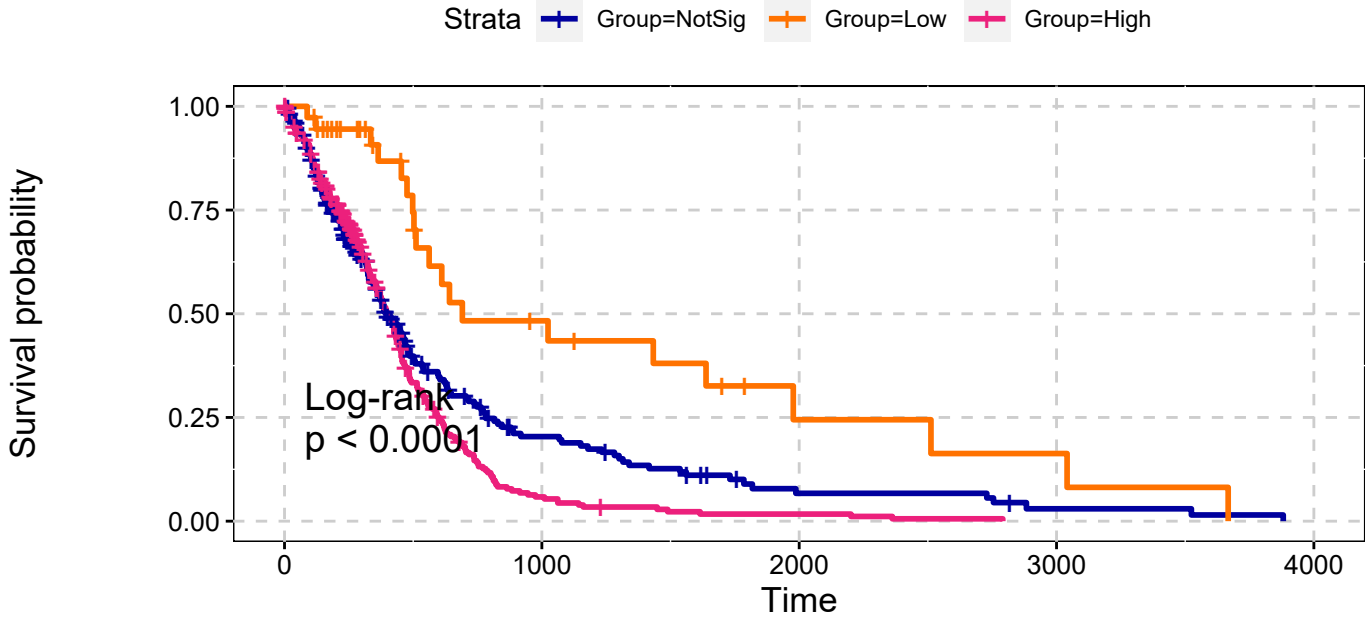


RiskGroup: Amp-Del, p.Valorate <.05

GBM
Deep Amplifications
Single Data Signature



GBM
Deep Amplifications
Single Data Signature

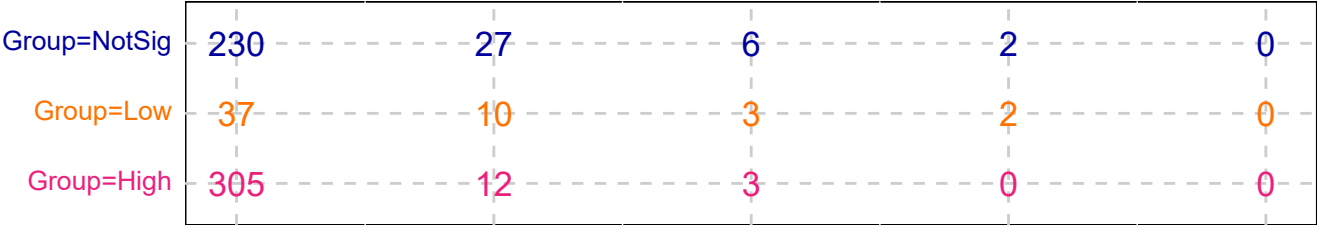


explanatory	beta	HR	L95	U95	p
Low	-0.81	0.44	0.28	0.71	0.00
High	0.30	1.35	1.10	1.65	0.00

n= 572, number of events =430
Score(logrank) test = p <.0001

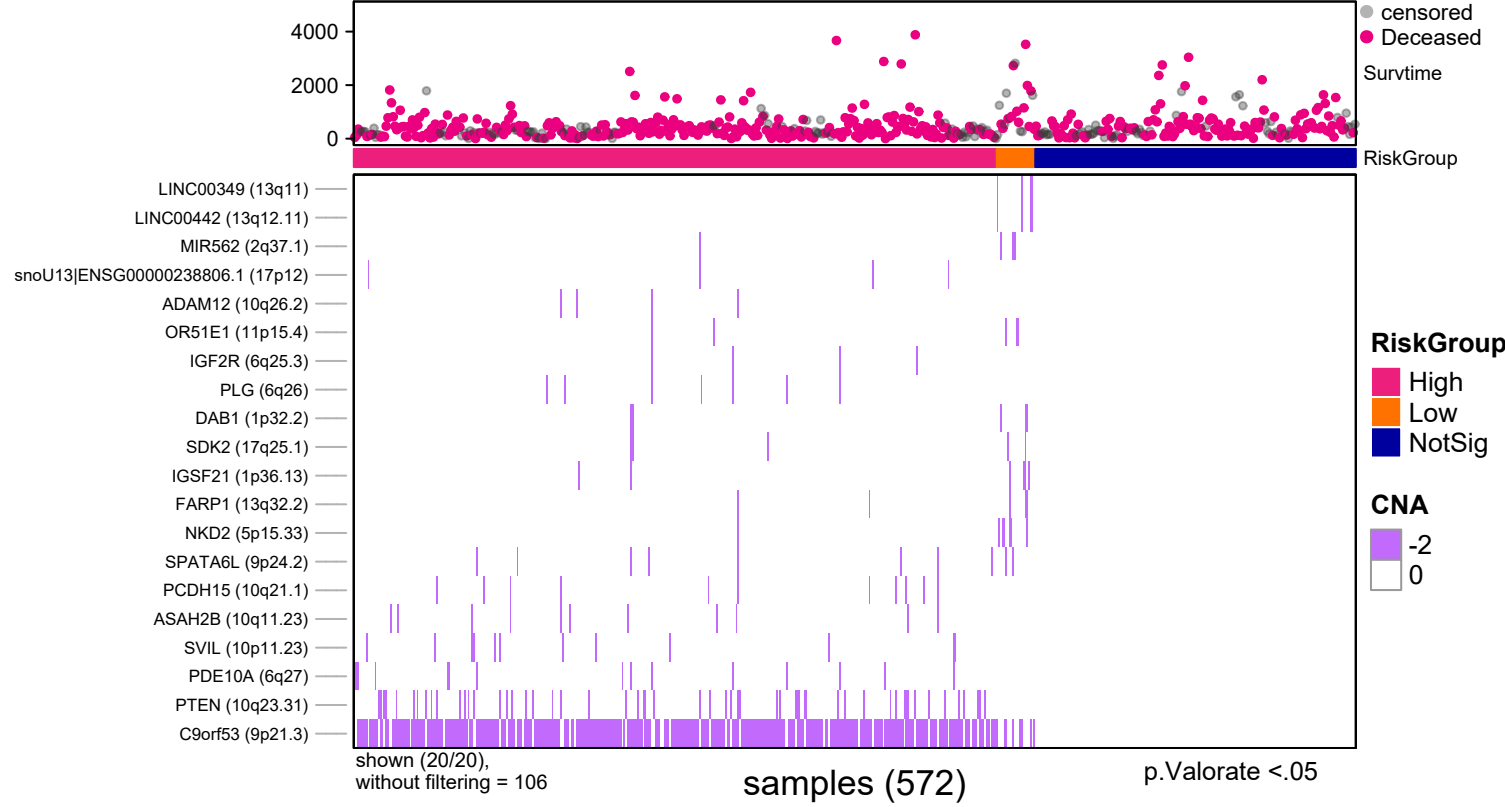
p.Valorate <.05

Number at risk

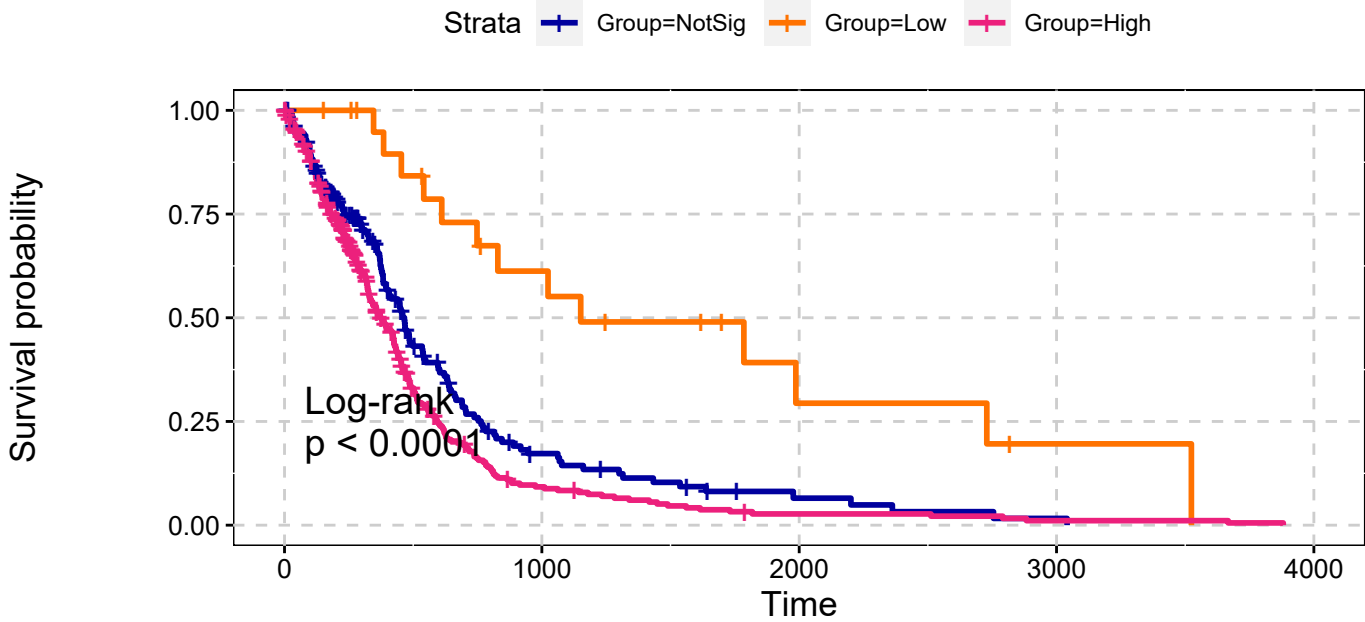


p.Valorate <.05

GBM
Deep Deletions
Single Data Signature



GBM
Deep Deletions
Single Data Signature

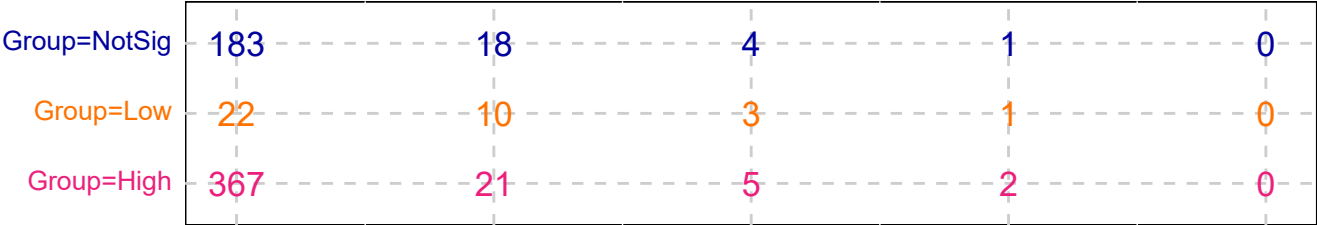


p.Valorate <.05

explanatory	beta	HR	L95	U95	p
Low	-1.03	0.36	0.20	0.63	0.00
High	0.28	1.33	1.08	1.63	0.01

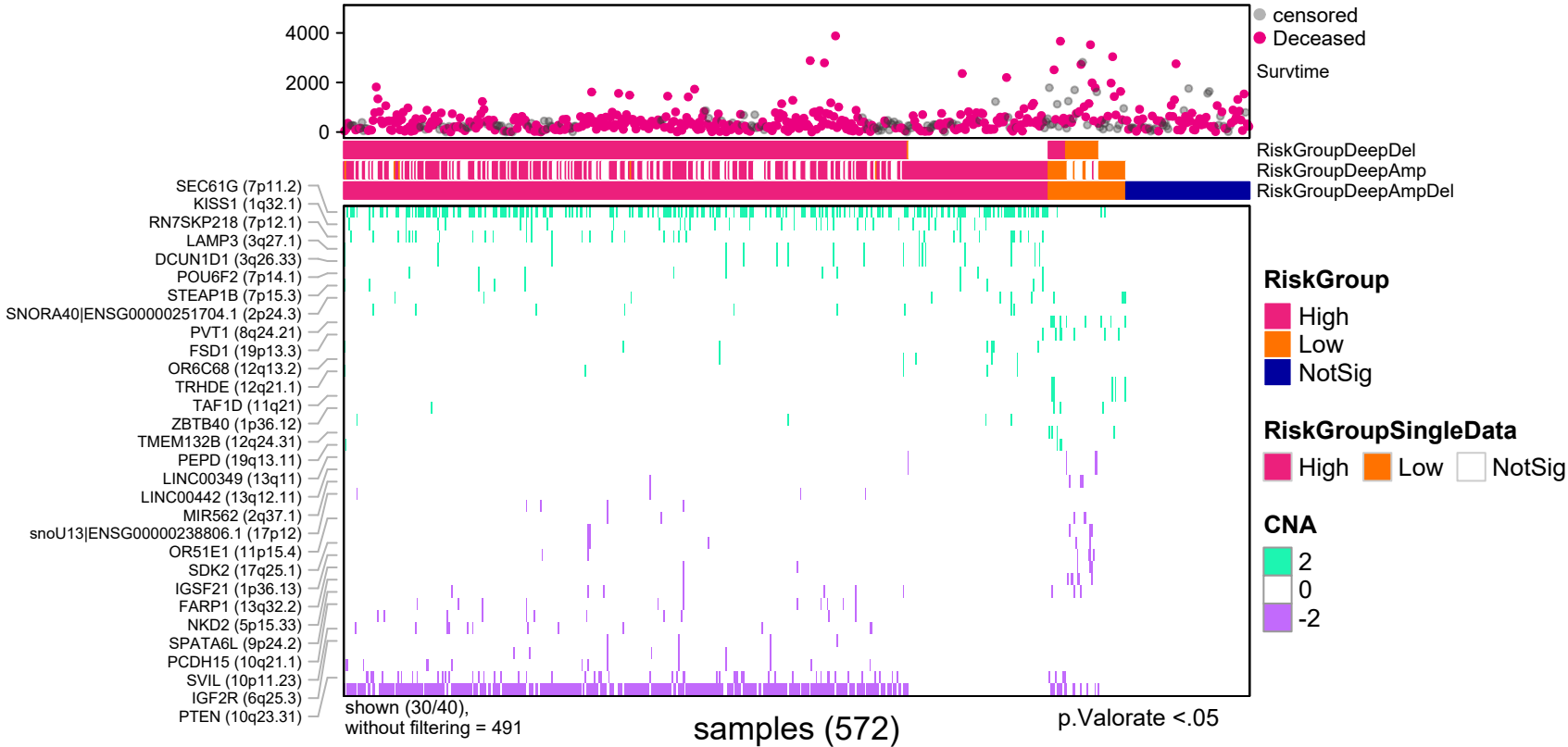
n= 572, number of events =430
Score(logrank) test = p <.0001

Number at risk



p.Valorate <.05

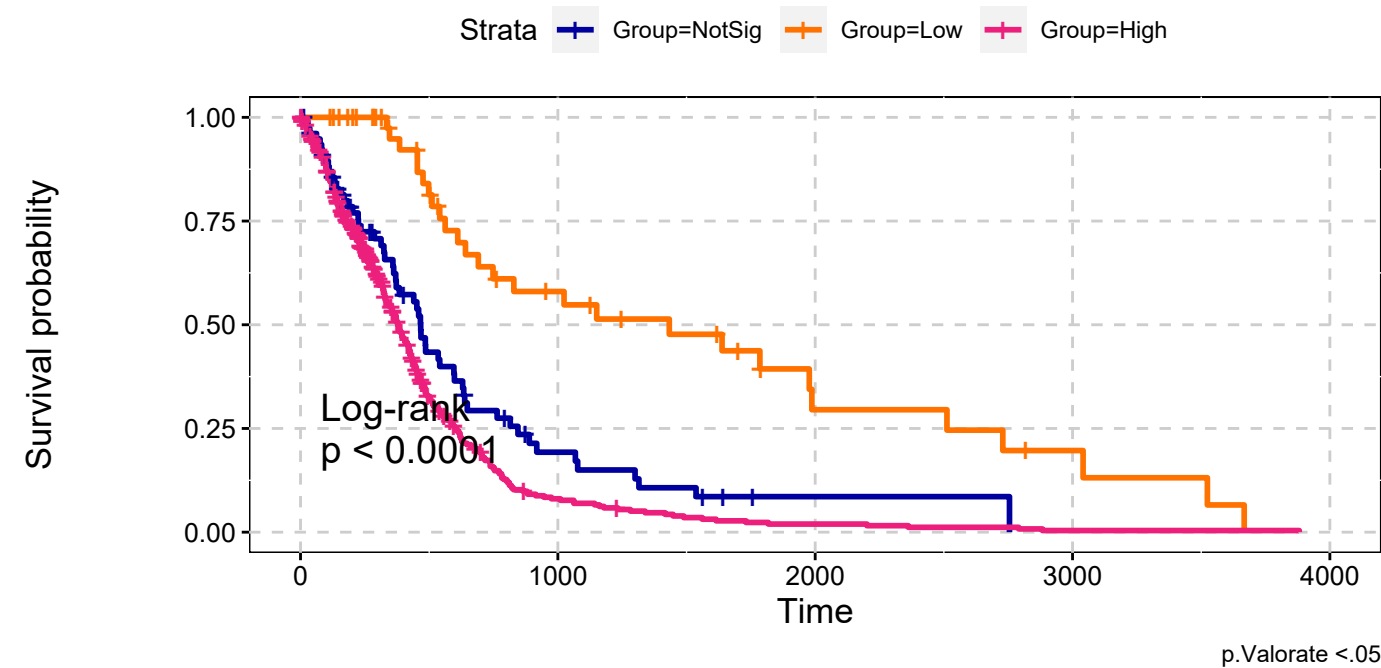
GBM
Deep Amplifications & Deep Deletions
Max Sum Significance Signatures



GBM

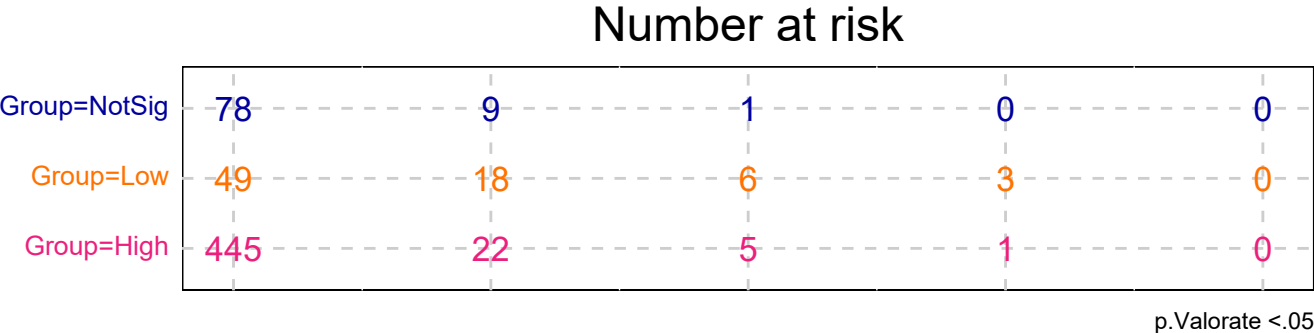
Deep Amplifications & Deep Deletions

Max Sum Significance Signatures

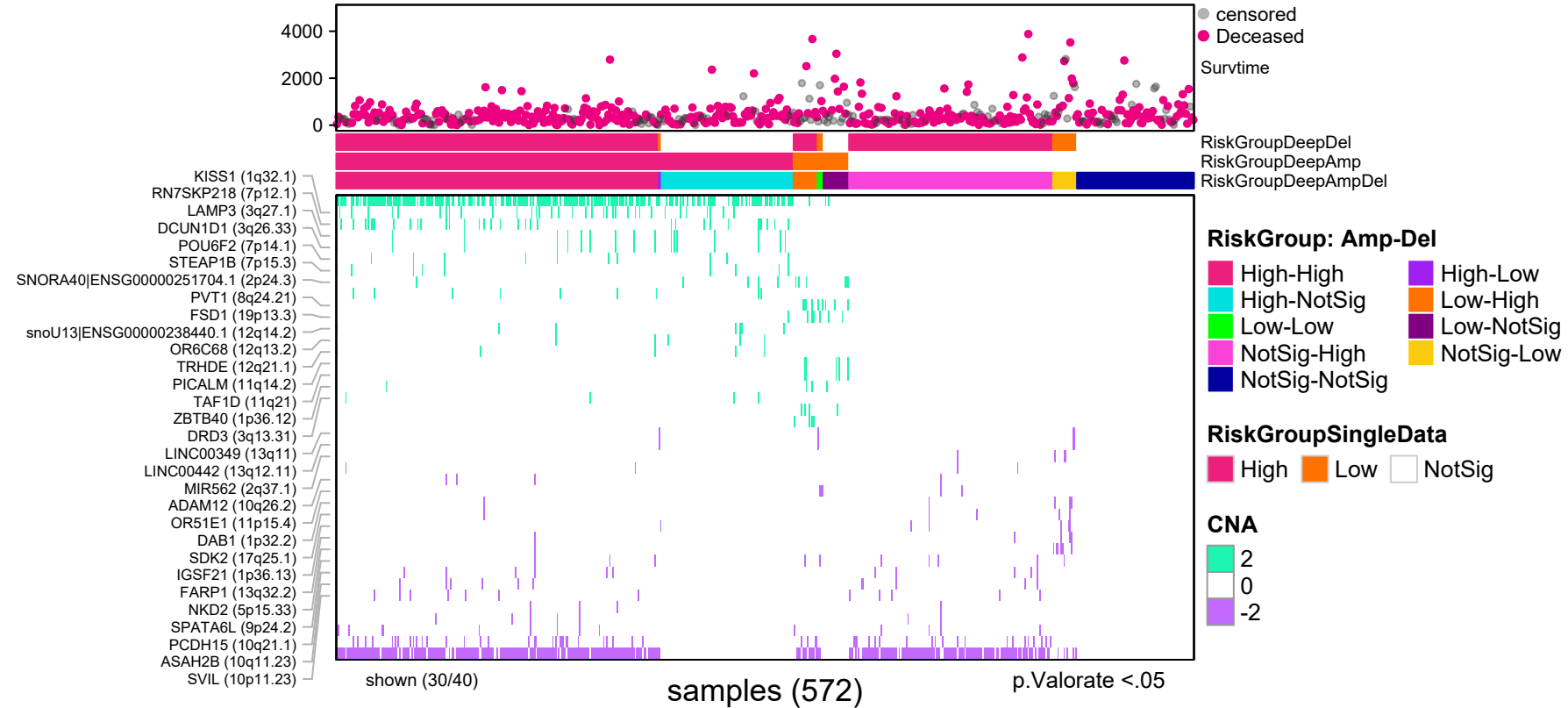


explanatory	beta	HR	L95	U95	p
Low	-1.01	0.37	0.23	0.58	0.00
High	0.35	1.42	1.07	1.89	0.02

n= 572, number of events =430
Score(logrank) test = p <.0001

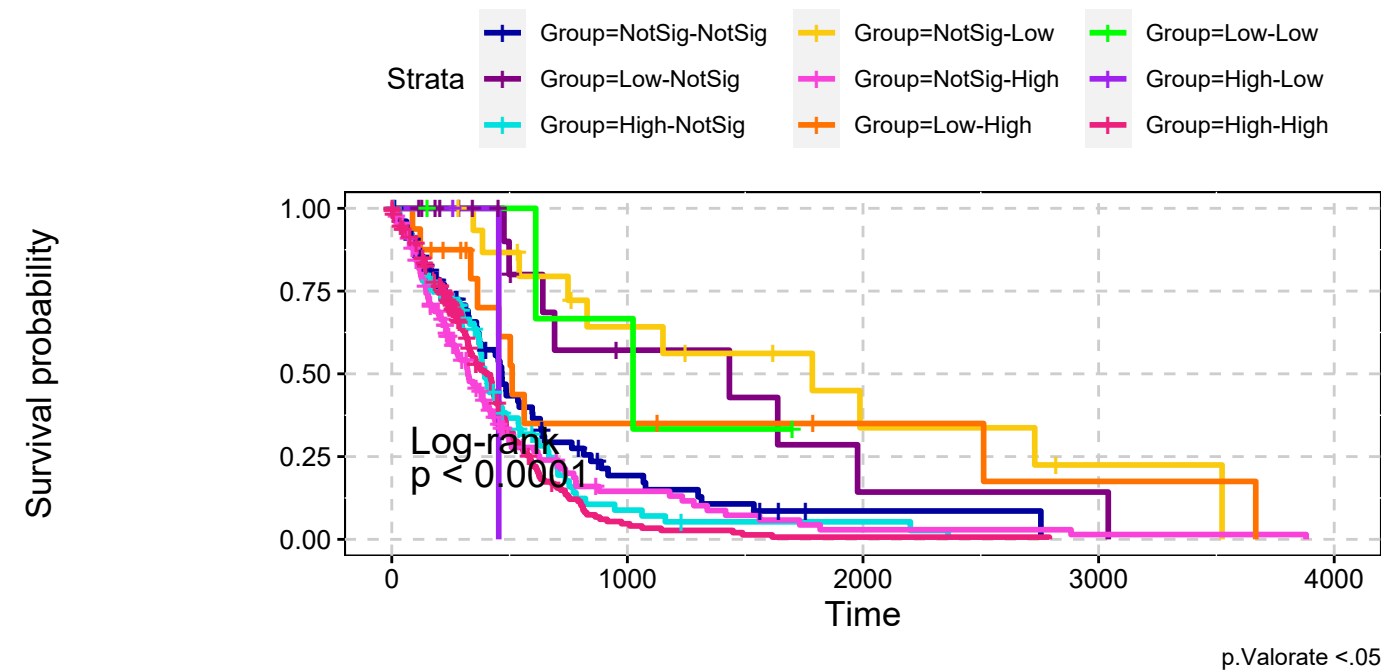


GBM
Deep Amplifications & Deep Deletions
combining signatures



GBM

Deep Amplifications & Deep Deletions combining signatures



explanatory	beta	HR	L95	U95	p
Low-NotSig	-0.92	0.40	0.19	0.84	0.02
High-NotSig	0.26	1.30	0.91	1.86	0.15
NotSig-Low	-1.12	0.33	0.16	0.64	0.00
NotSig-High	0.32	1.37	0.99	1.90	0.06
Low-High	-0.60	0.55	0.28	1.08	0.08
Low-Low	-1.00	0.37	0.09	1.52	0.17
High-Low	0.07	1.07	0.15	7.74	0.95
High-High	0.40	1.50	1.10	2.03	0.01

n= 572, number of events =430
Score(logrank) test = p <.0001

Number at risk

