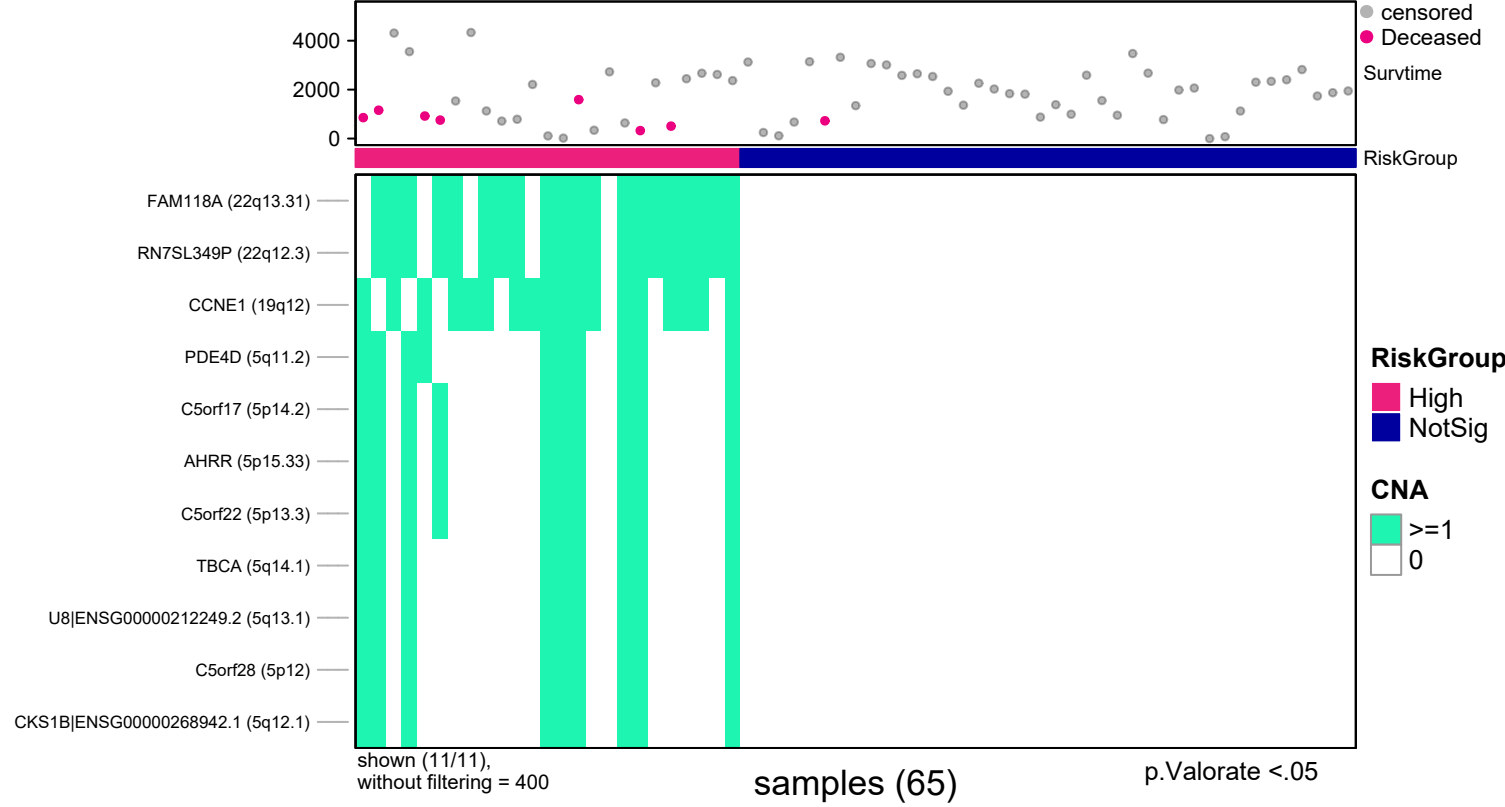
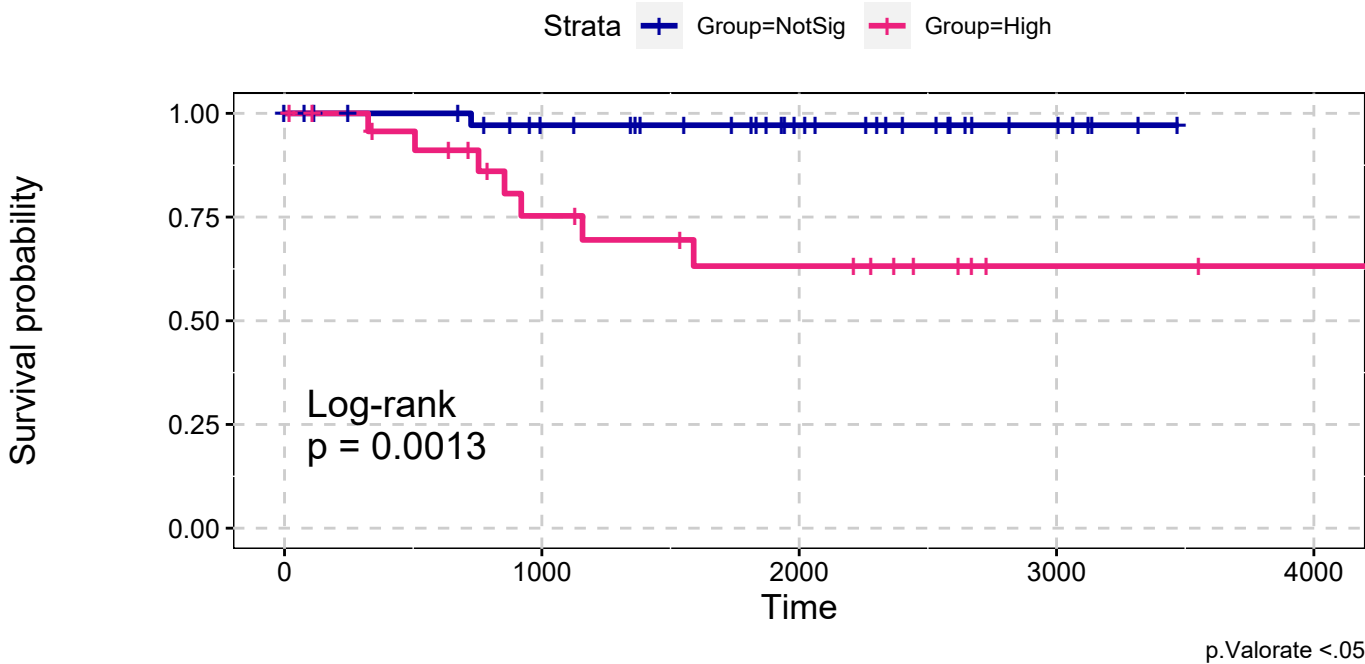


KICH
All Amplifications
Single Data Signature

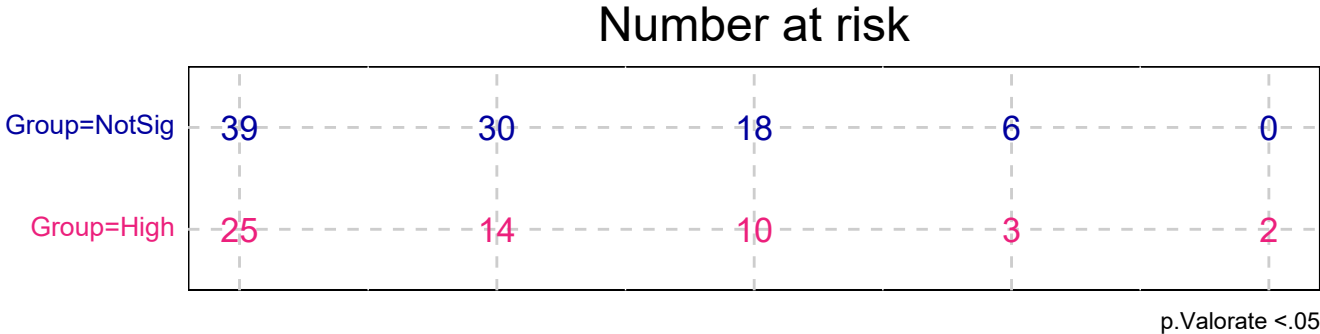


KICH
All Amplifications
Single Data Signature

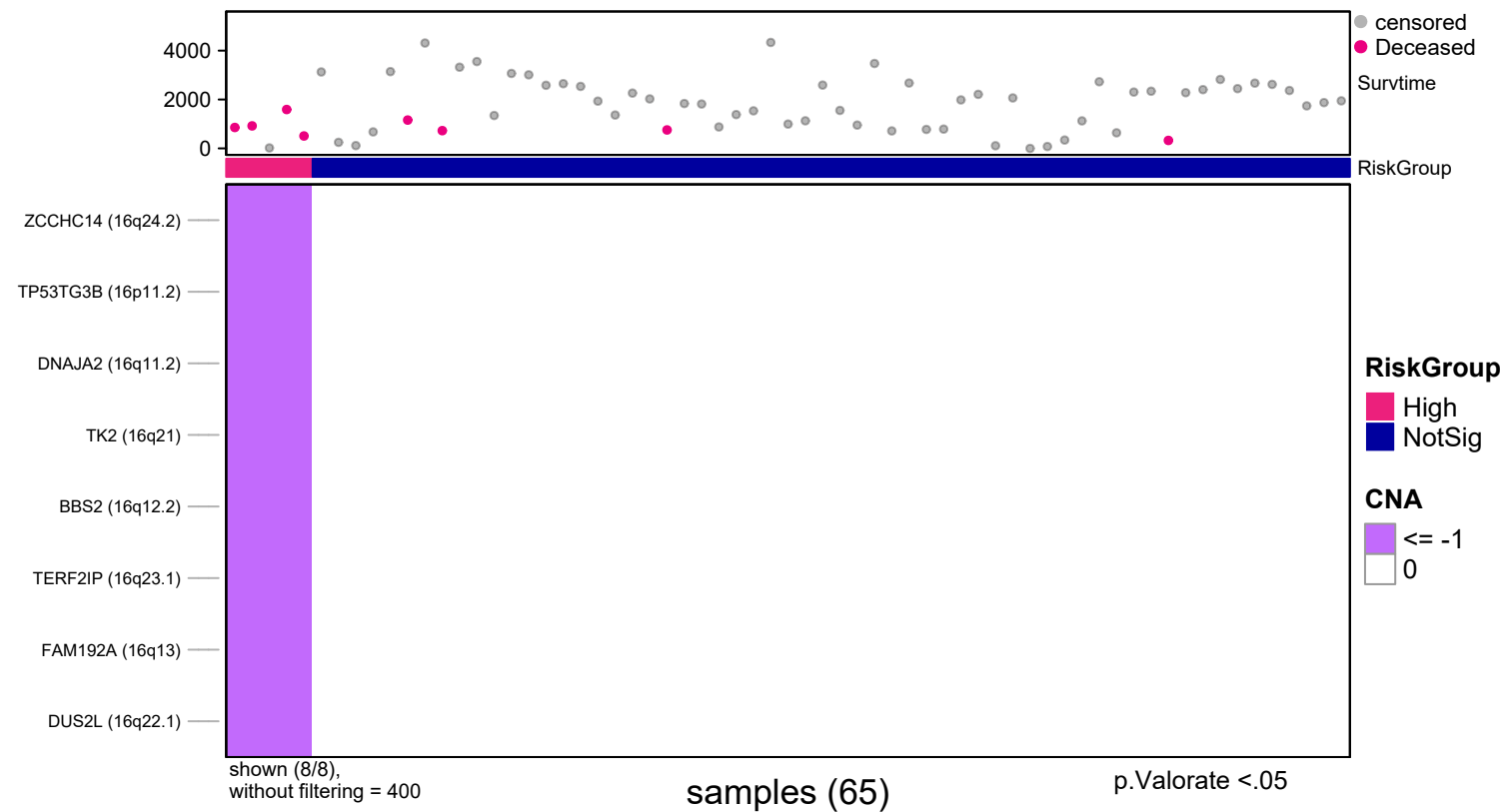


explanatory	beta	HR	L95	U95	p
High	2.63	13.81	1.70	112.44	0.01

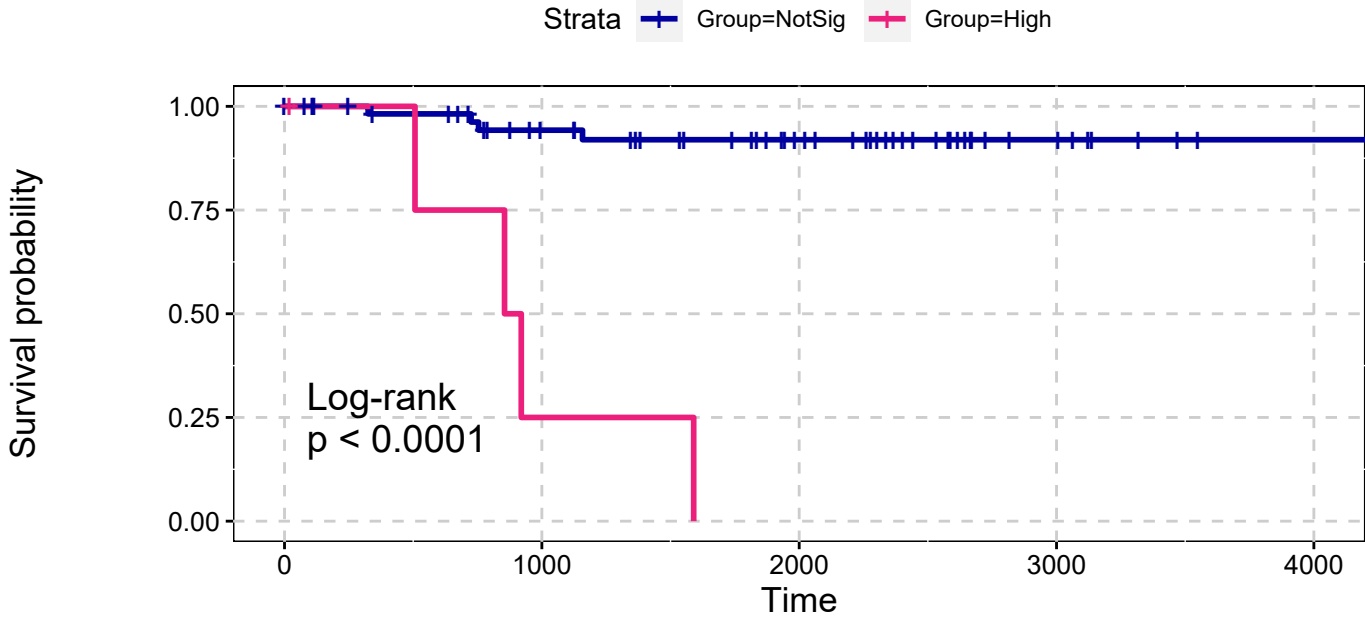
n= 65, number of events =8
Score(logrank) test = 0.001



KICH
All Deletions
Single Data Signature



KICH
All Deletions
Single Data Signature

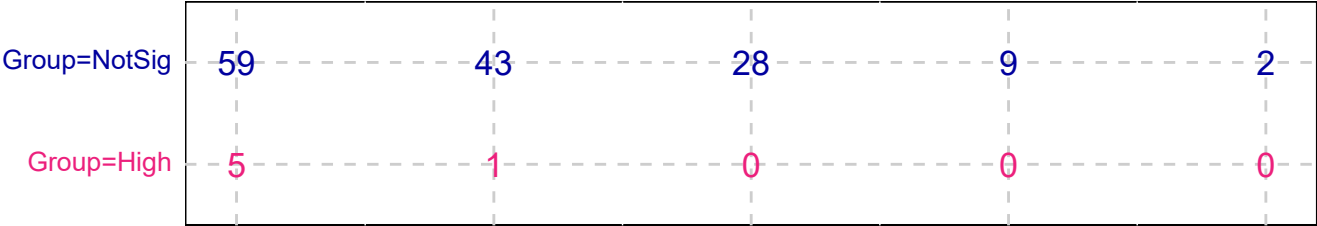


p.Valorate <.05

explanatory	beta	HR	L95	U95	p
High	2.99	19.81	4.82	81.42	0.00

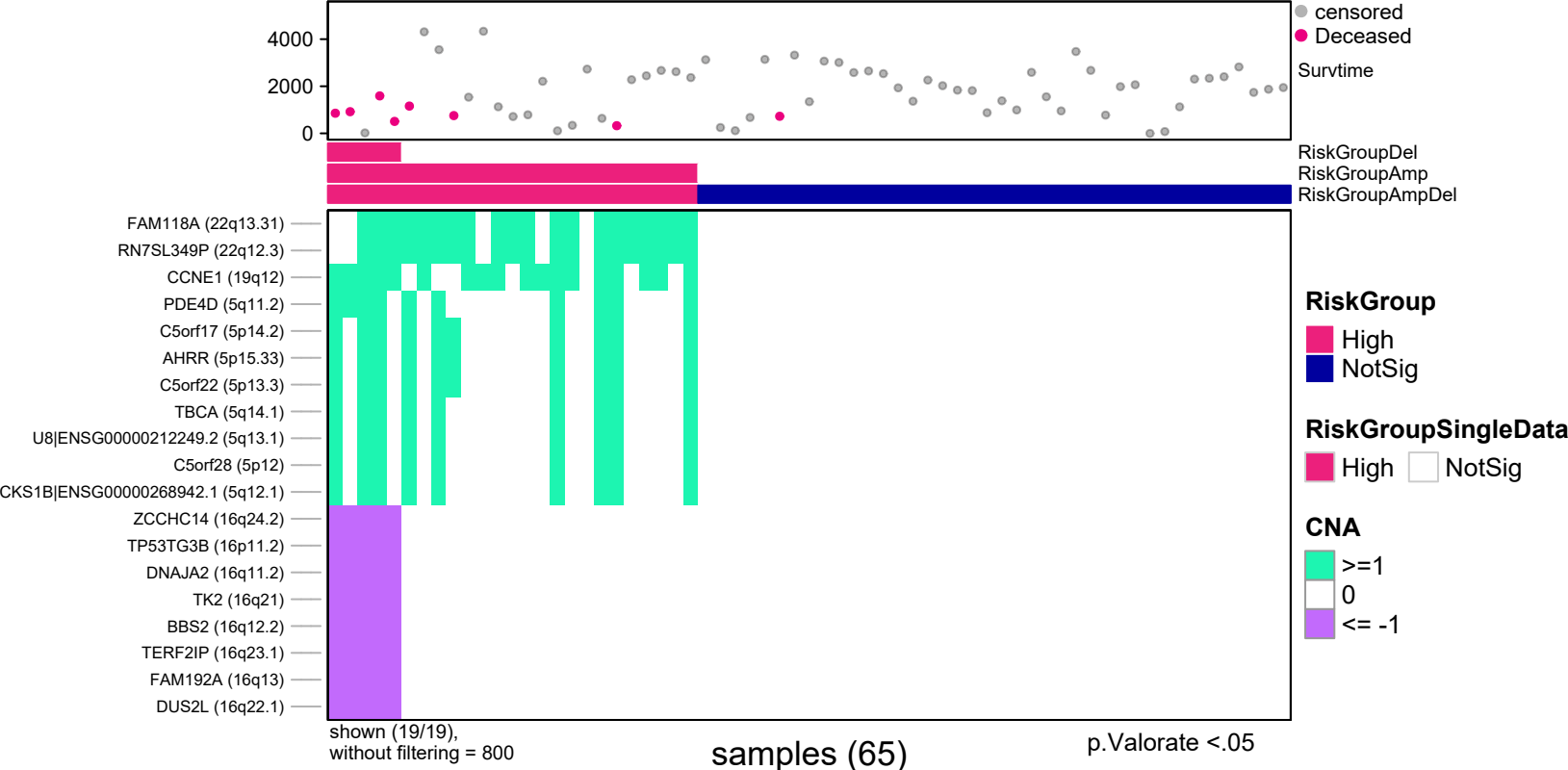
n= 65, number of events =8
Score(logrank) test = p <.0001

Number at risk

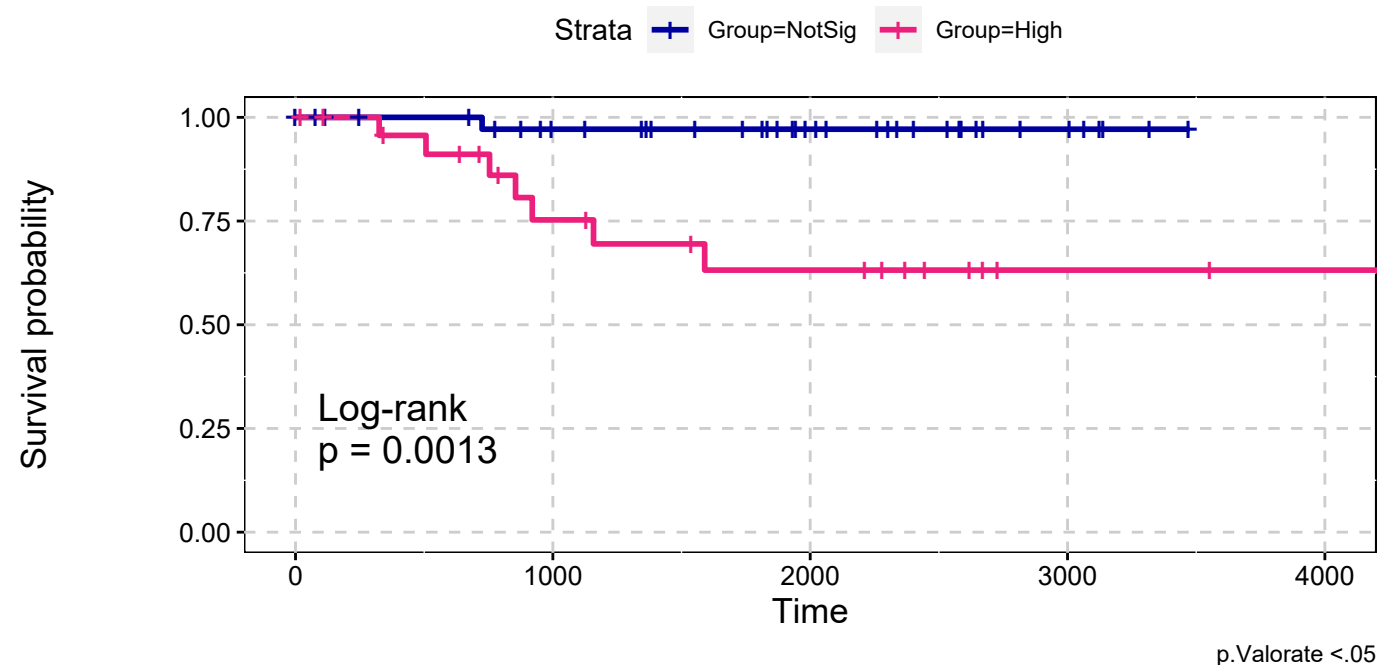


p.Valorate <.05

KICH
All Amplifications & All Deletions
Max Sum Significance Signatures

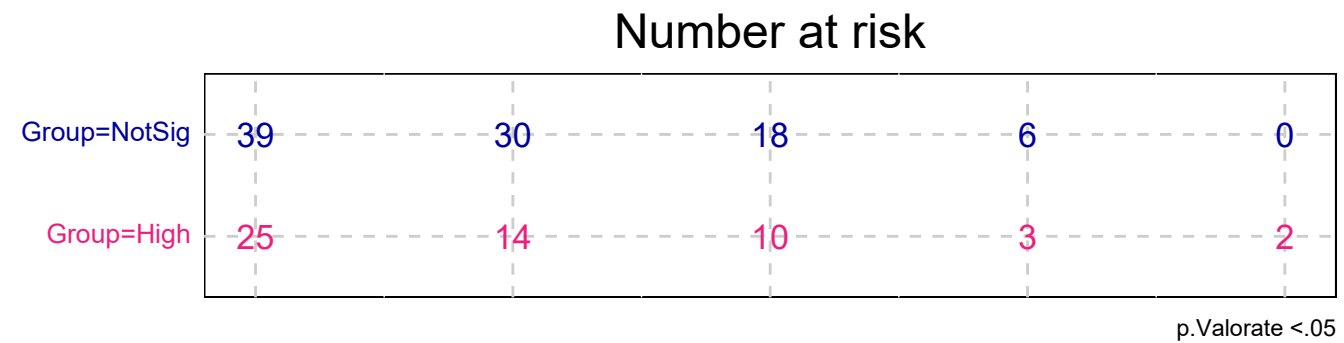


KICH
All Amplifications & All Deletions
Max Sum Significance Signatures

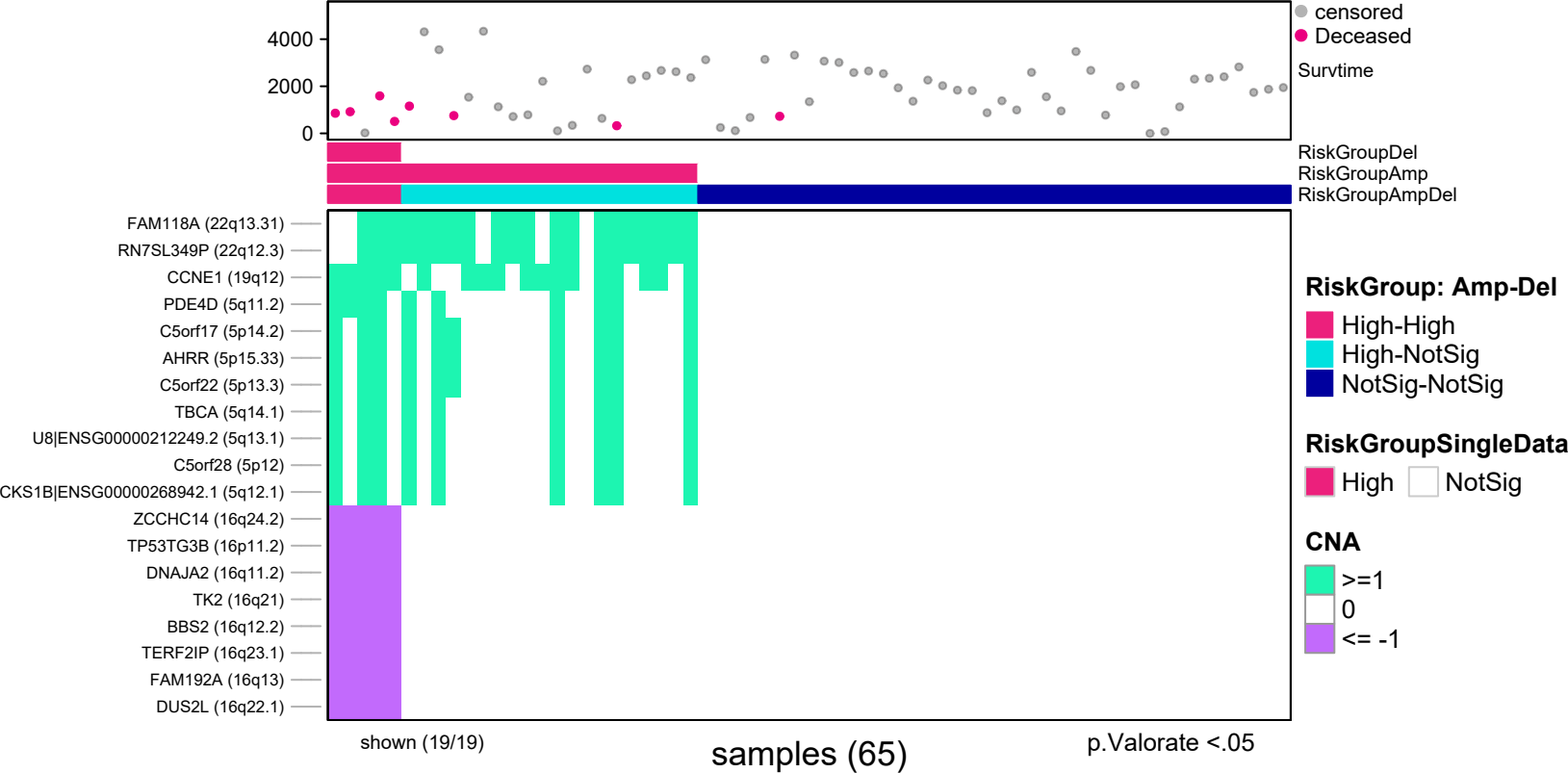


explanatory	beta	HR	L95	U95	p
High	2.63	13.81	1.70	112.44	0.01

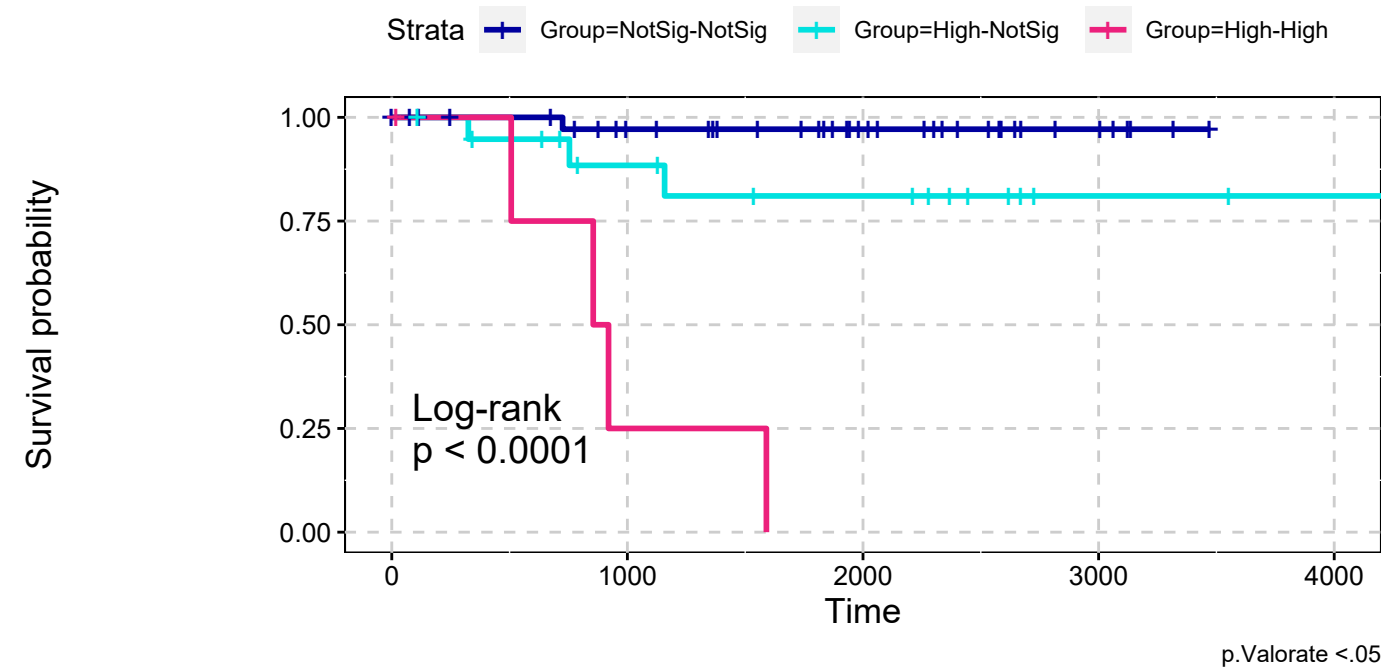
n= 65, number of events =8
Score(logrank) test = 0.001



KICH
All Amplifications & All Deletions
combining signatures



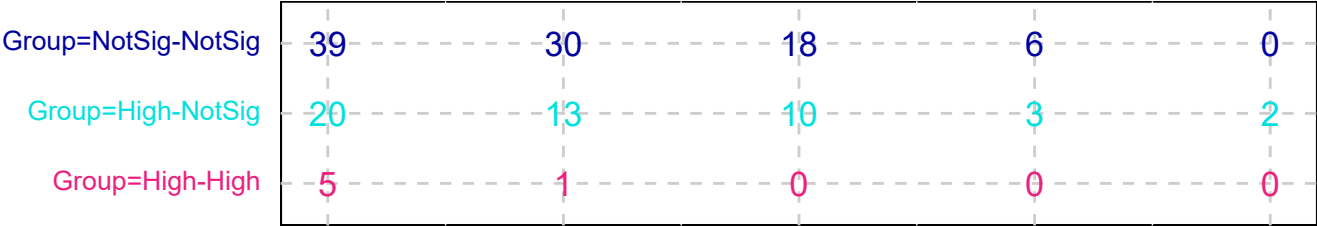
KICH
All Amplifications & All Deletions
combining signatures



explanatory	beta	HR	L95	U95	p
High-NotSig	1.94	6.99	0.73	67.28	0.09
High-High	4.02	55.73	6.11	508.18	0.00

n= 65, number of events =8
Score(logrank) test = p <.0001

Number at risk



RiskGroup: Amp-Del, p.Valorate <.05