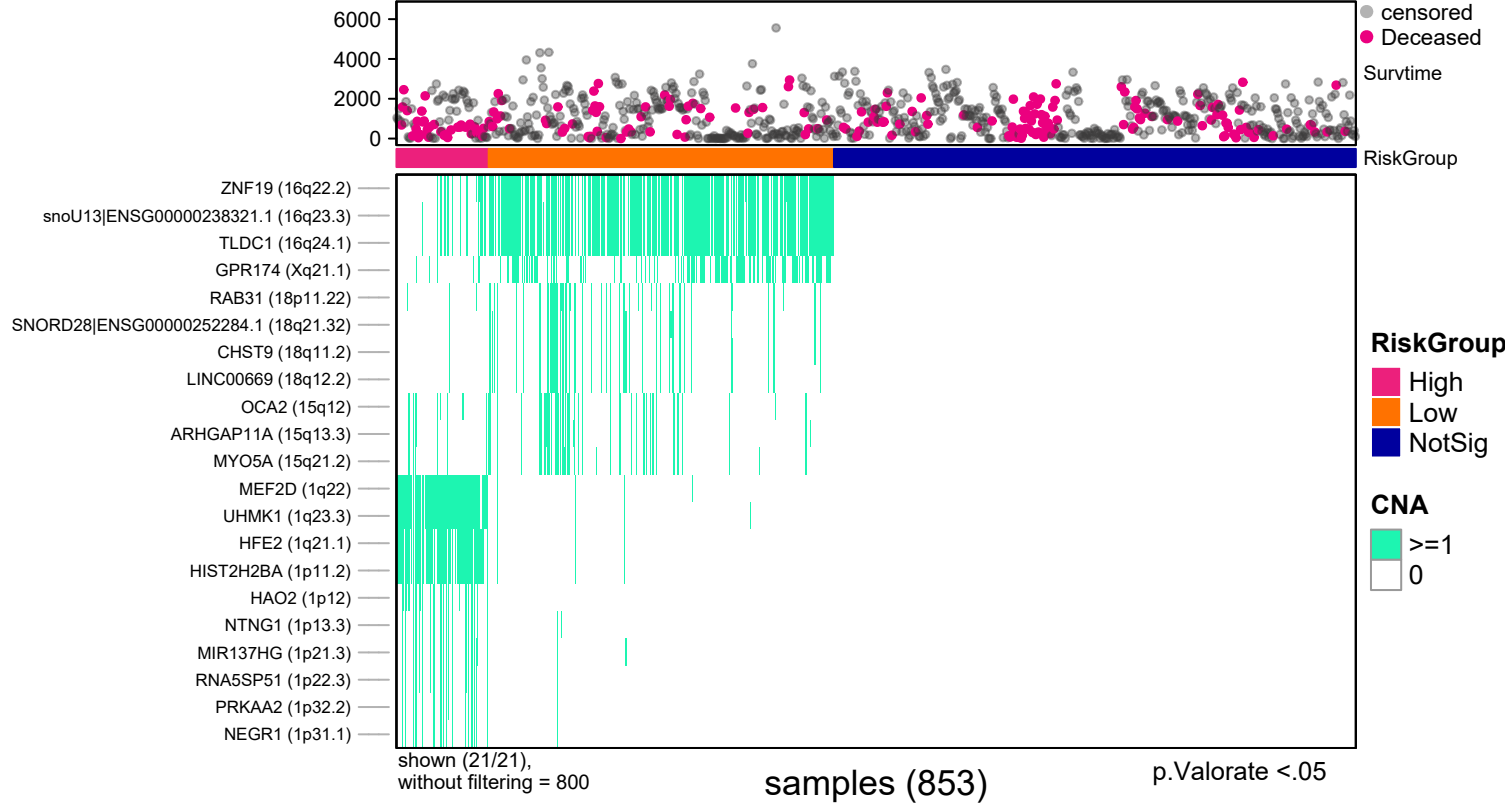
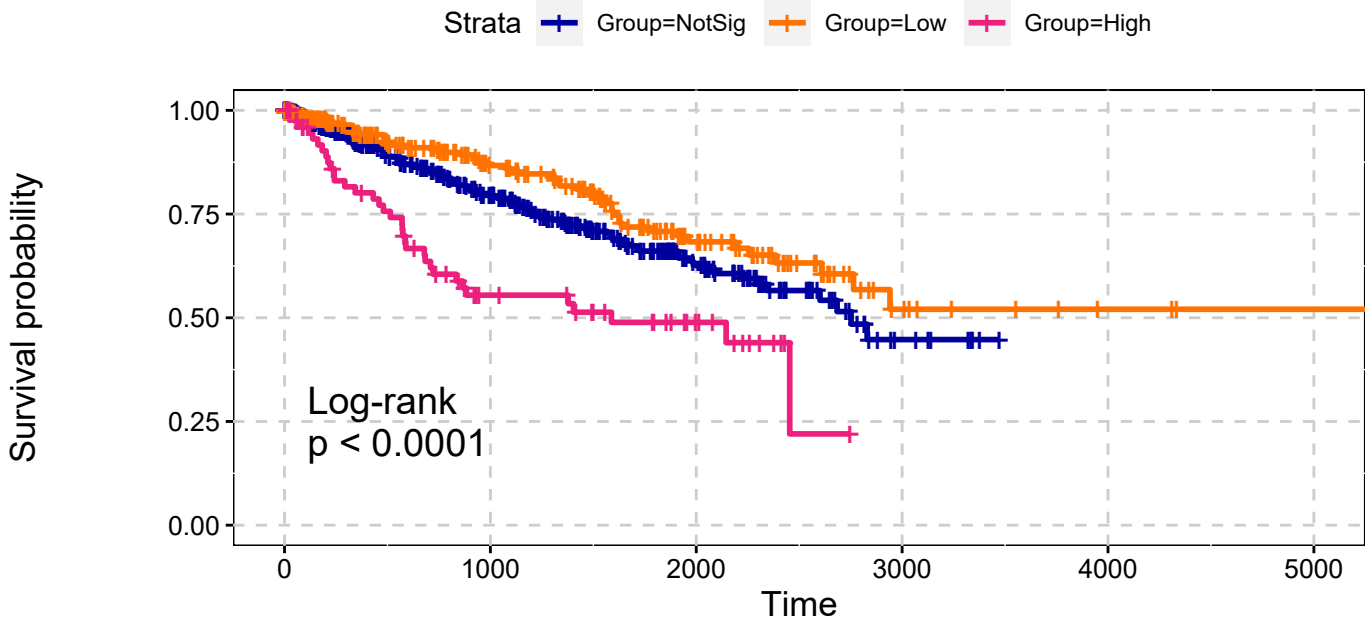


KIPAN  
All Amplifications  
Single Data Signature



KIPAN  
All Amplifications  
Single Data Signature



explanatory	beta	HR	L95	U95	p
Low	-0.30	0.74	0.53	1.02	0.07
High	0.69	2.00	1.37	2.93	0.00

n= 853, number of events =200  
Score(logrank) test =  $p < .0001$

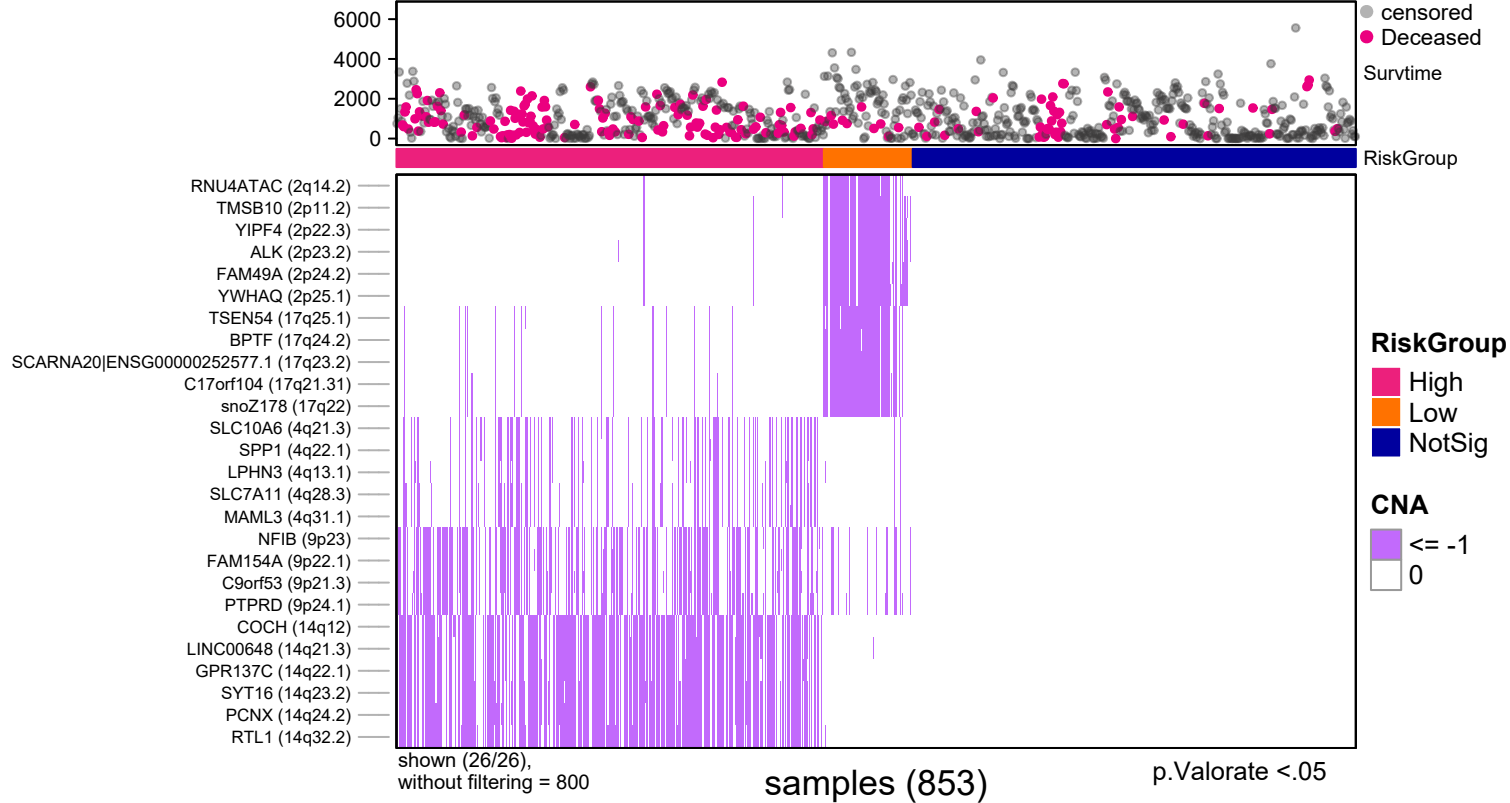
p.Valorate <.05

Number at risk

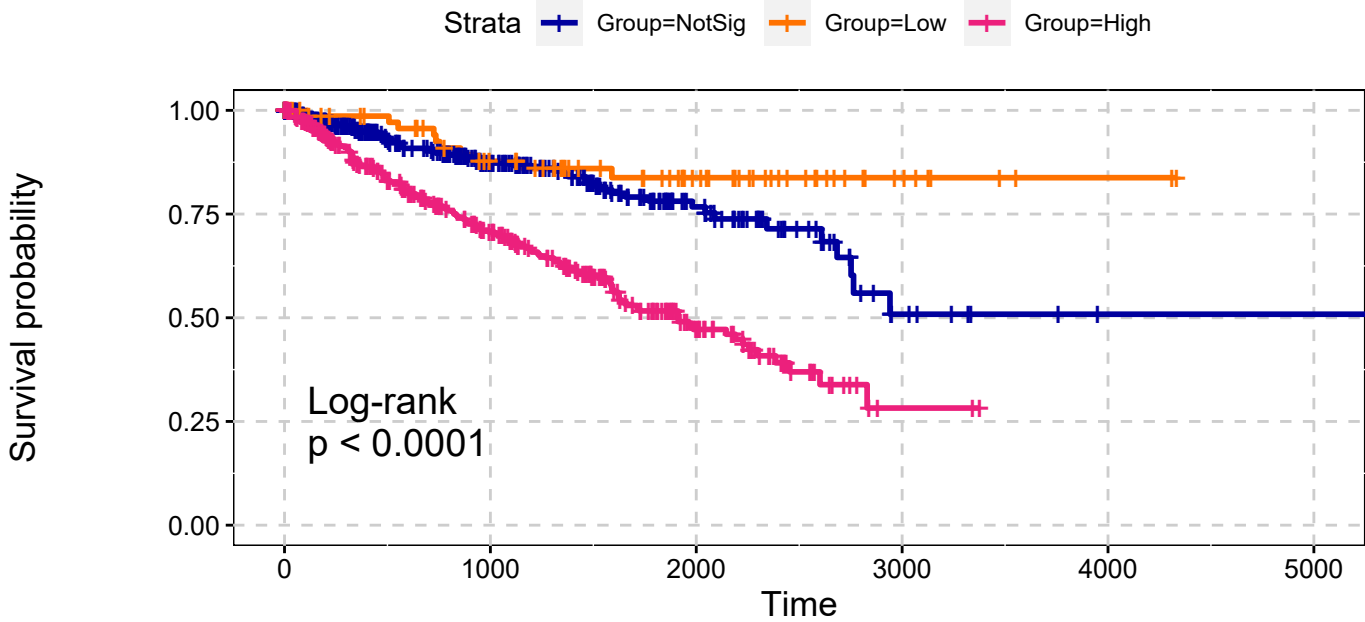
Group=NotSig	462	217	70	8	0	0
Group=Low	307	132	52	10	3	1
Group=High	82	29	12	0	0	0

p.Valorate <.05

KIPAN  
All Deletions  
Single Data Signature



KIPAN  
All Deletions  
Single Data Signature



p.Valorate <.05

explanatory	beta	HR	L95	U95	p
Low	-0.62	0.54	0.27	1.06	0.07
High	0.94	2.55	1.85	3.50	0.00

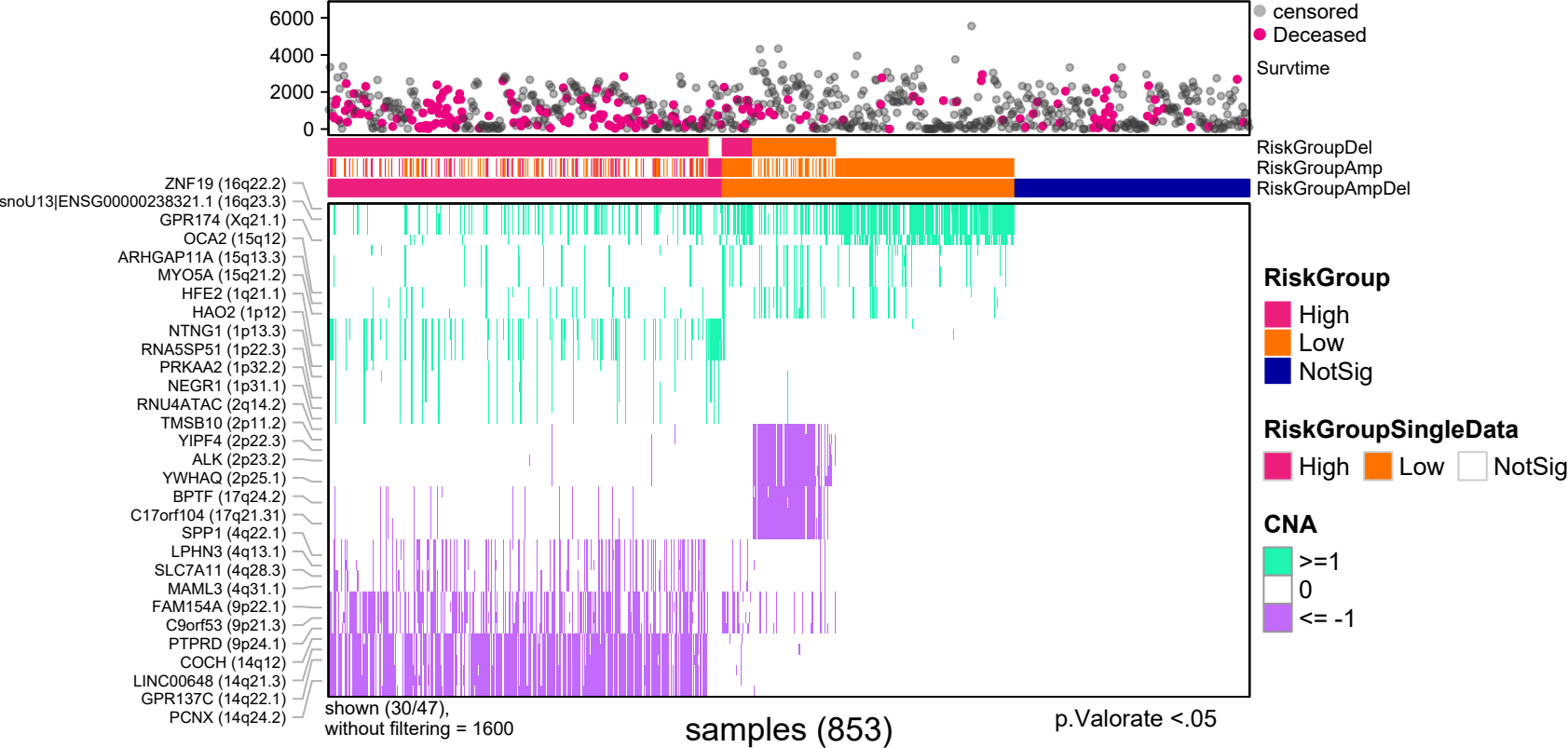
n= 853, number of events =200  
Score(logrank) test = p <.0001

Number at risk

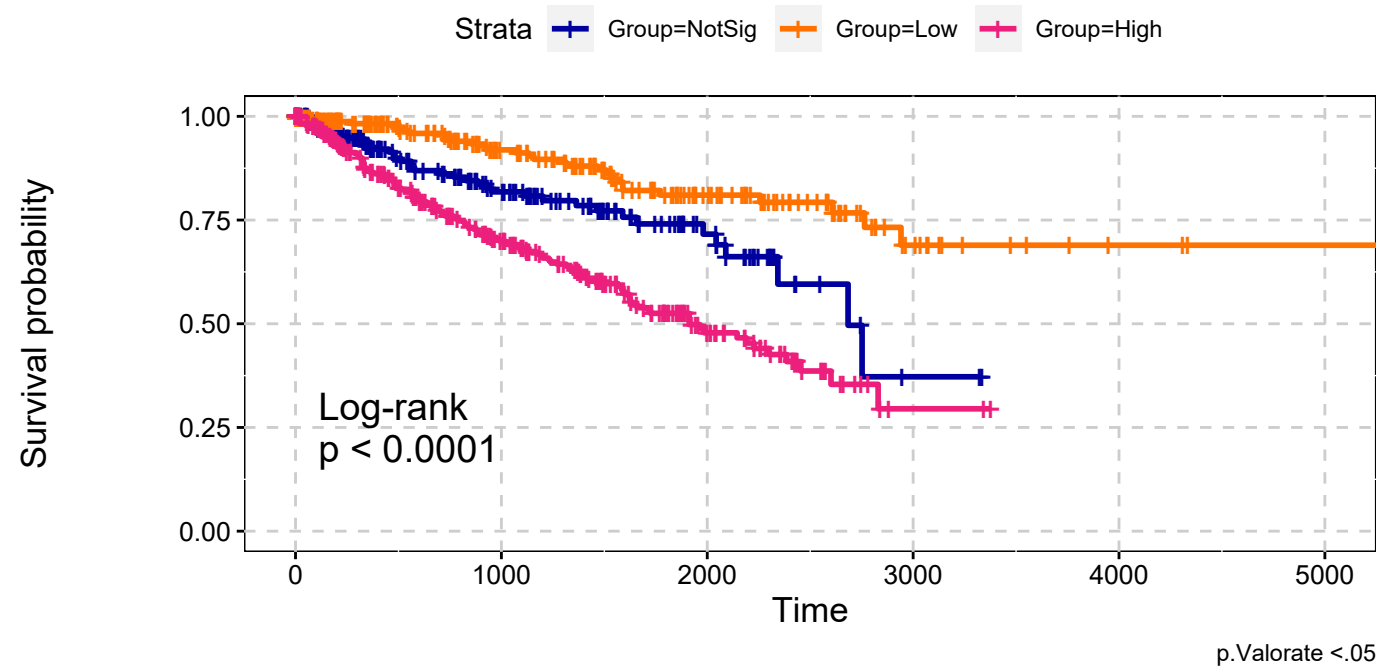
Group=NotSig	393	153	56	8	1	1
Group=Low	78	52	29	8	2	0
Group=High	380	173	49	2	0	0

p.Valorate <.05

KIPAN  
All Amplifications & All Deletions  
Max Sum Significance Signatures

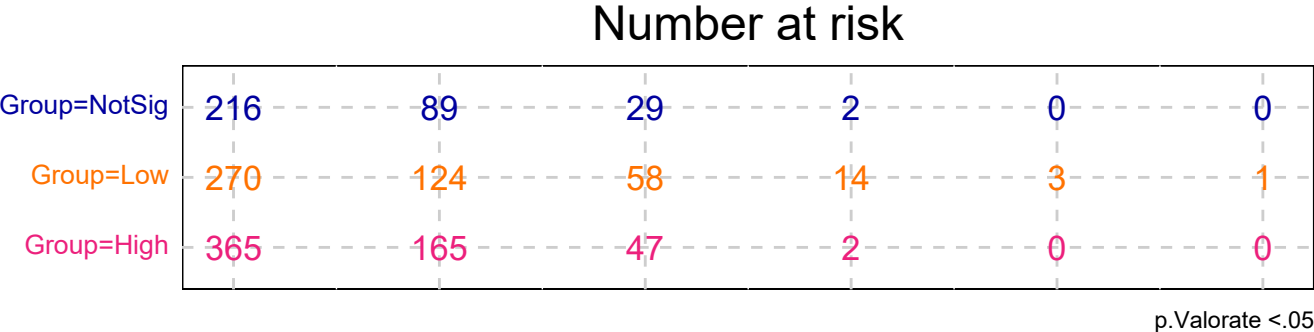


KIPAN  
All Amplifications & All Deletions  
Max Sum Significance Signatures

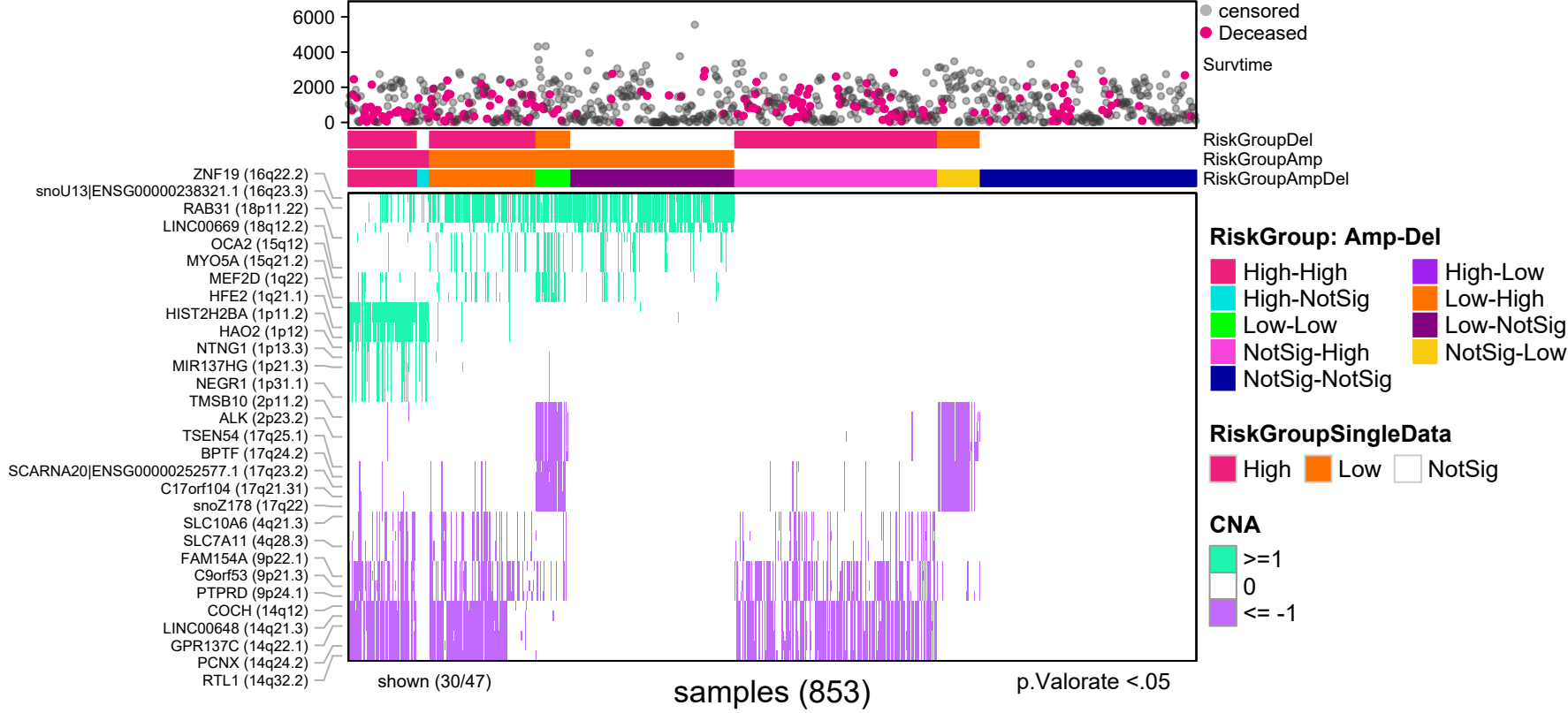


explanatory	beta	HR	L95	U95	p
Low	-0.72	0.49	0.30	0.79	0.00
High	0.61	1.85	1.29	2.64	0.00

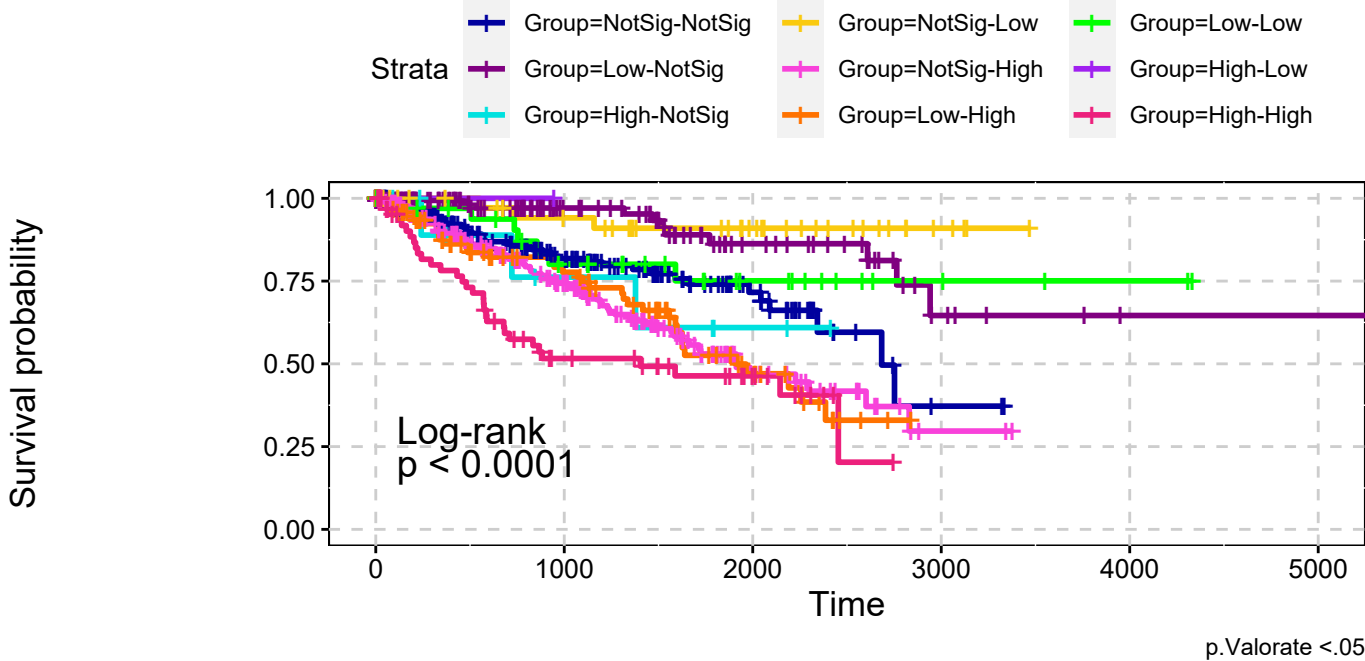
n= 853, number of events =200  
Score(logrank) test = p <.0001



KIPAN  
All Amplifications & All Deletions  
combining signatures



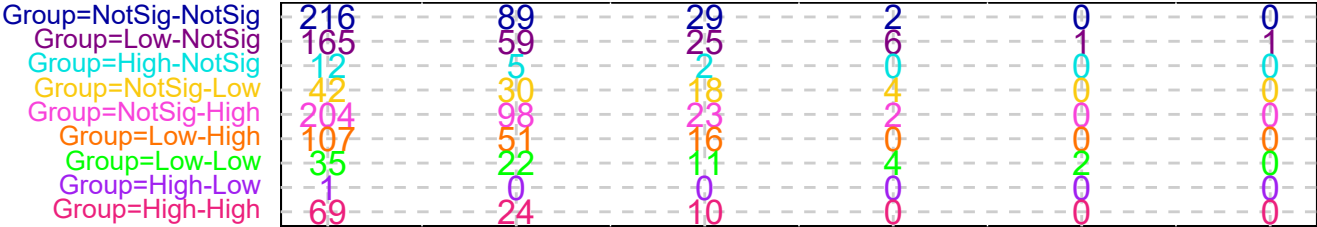
KIPAN  
All Amplifications & All Deletions  
combining signatures



explanatory	beta	HR	L95	U95	p
Low-NotSig	-1.05	0.35	0.18	0.68	0.00
High-NotSig	0.26	1.29	0.40	4.18	0.67
NotSig-Low	-1.59	0.20	0.06	0.66	0.01
NotSig-High	0.53	1.69	1.14	2.51	0.01
Low-High	0.56	1.76	1.12	2.77	0.01
Low-Low	-0.45	0.64	0.28	1.43	0.27
High-Low	-12.99	0.00	0.00	Inf	0.99
High-High	0.97	2.63	1.65	4.20	0.00

n= 853, number of events =200  
Score(logrank) test = p <.0001

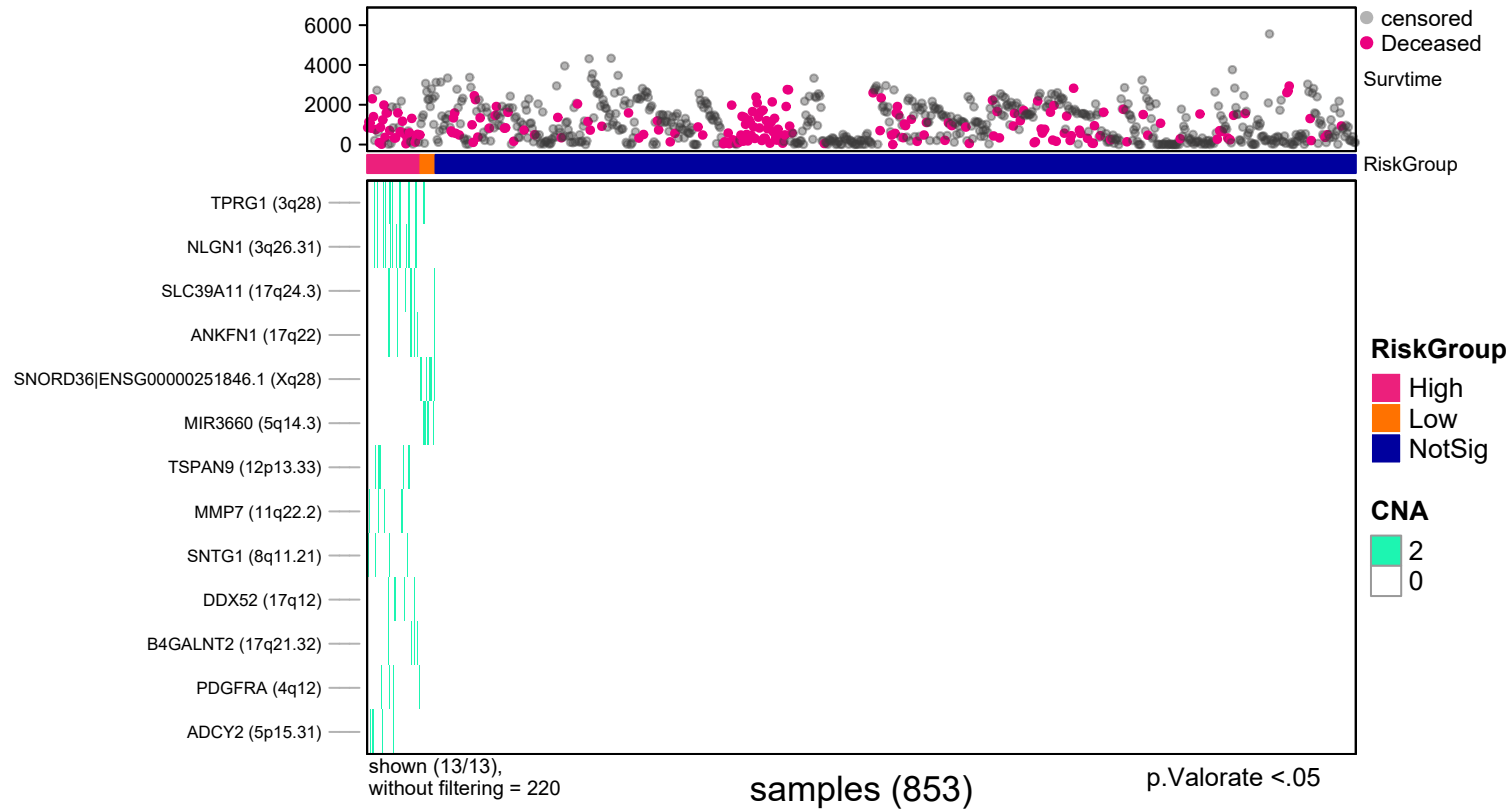
Number at risk



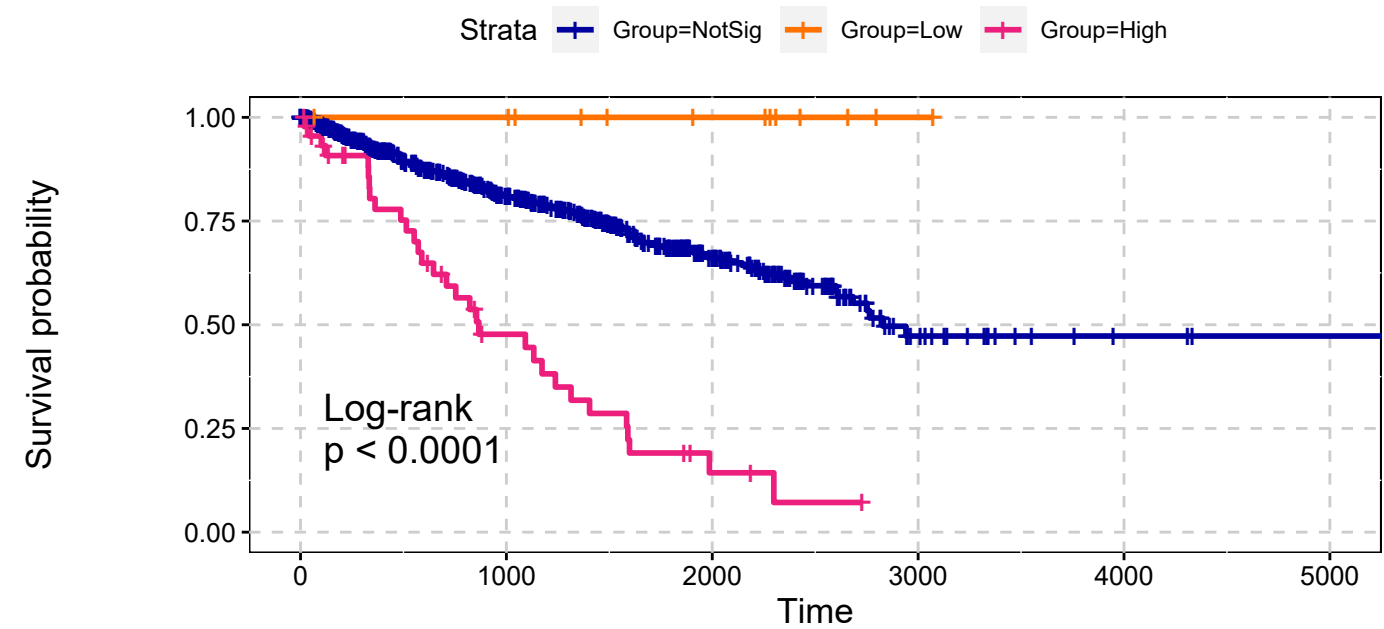
RiskGroup: Amp-Del, p.Valorate <.05



KIPAN  
Deep Amplifications  
Single Data Signature



KIPAN  
Deep Amplifications  
Single Data Signature

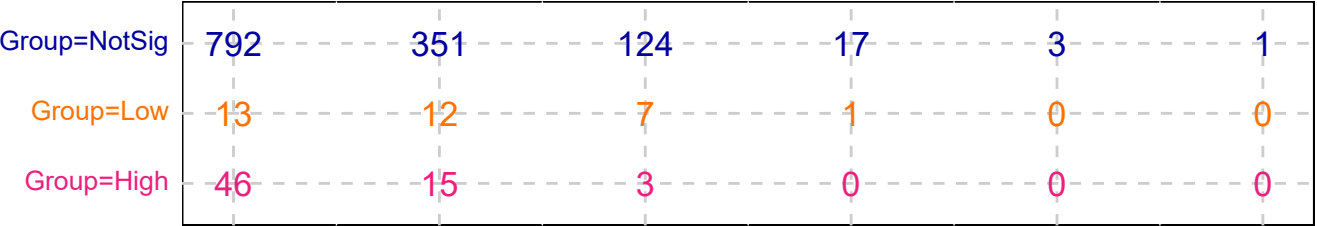


p.Valorate <.05

explanatory	beta	HR	L95	U95	p
Low	-16.49	0.00	0.00	Inf	0.99
High	1.37	3.94	2.68	5.80	0.00

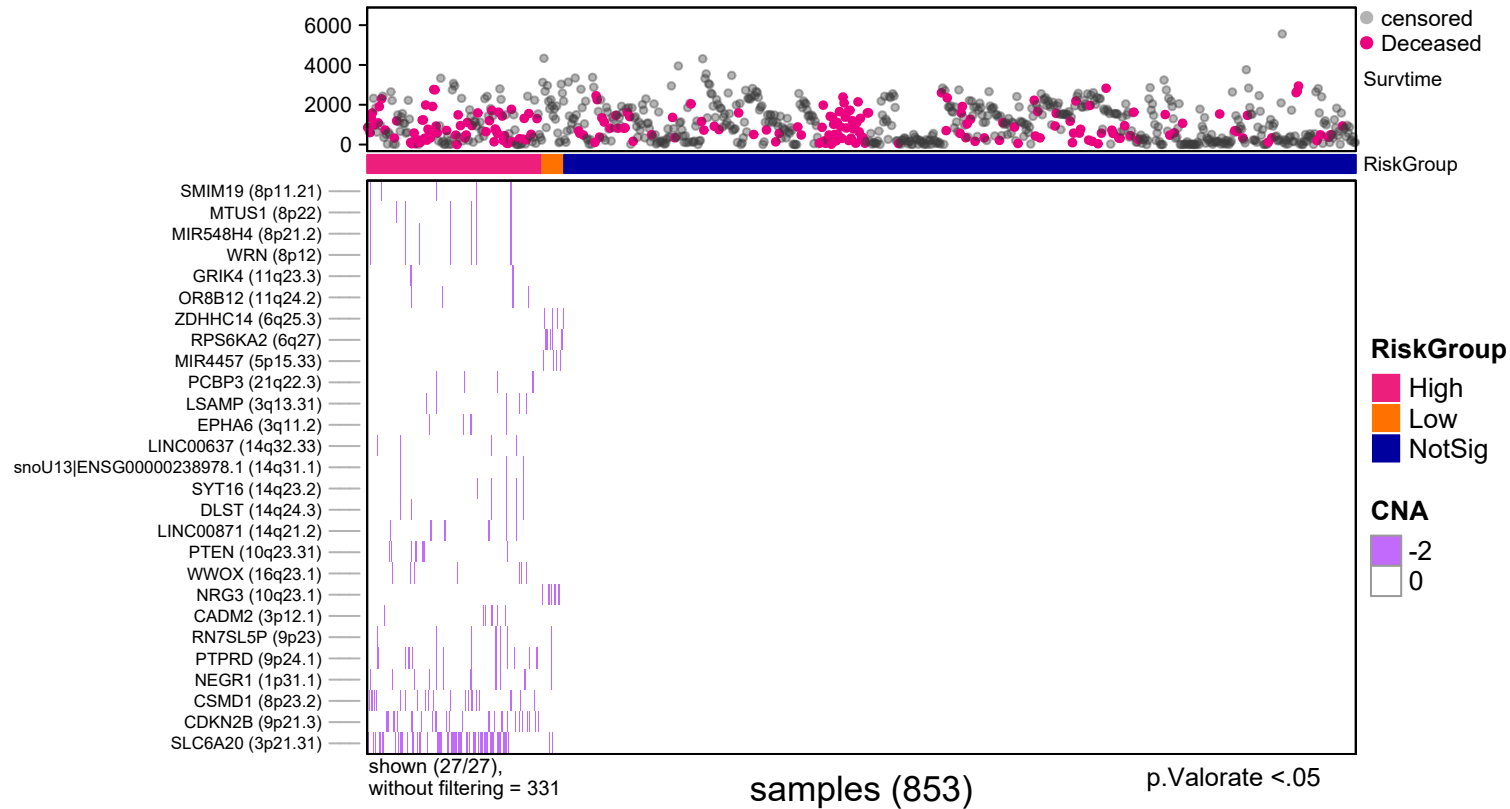
n= 853, number of events =200  
Score(logrank) test = p <.0001

Number at risk

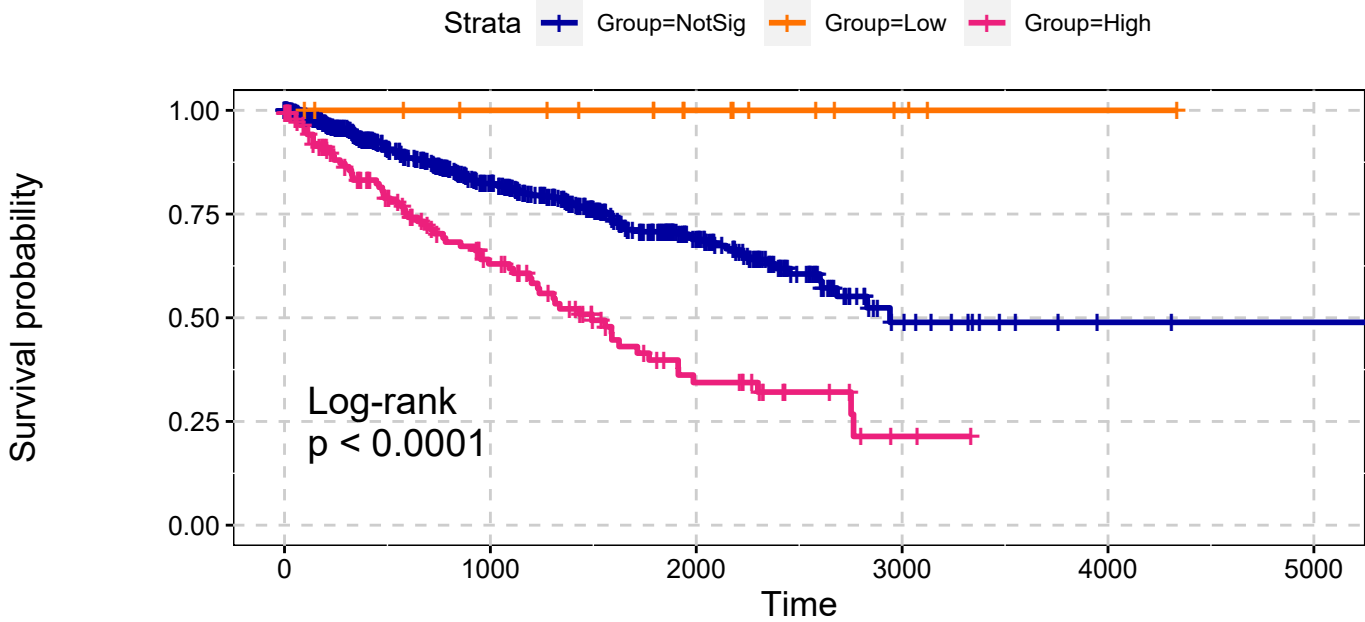


p.Valorate <.05

KIPAN  
Deep Deletions  
Single Data Signature



KIPAN  
Deep Deletions  
Single Data Signature

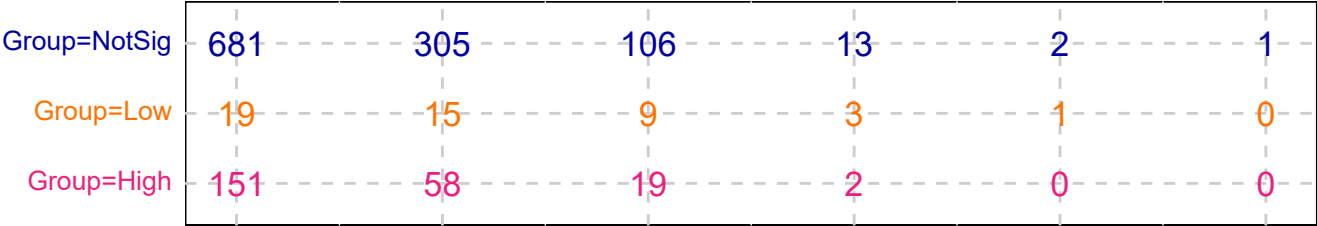


explanatory	beta	HR	L95	U95	p
Low	-17.01	0.00	0.00	Inf	0.99
High	0.90	2.45	1.82	3.29	0.00

n= 853, number of events =200  
Score(logrank) test = p <.0001

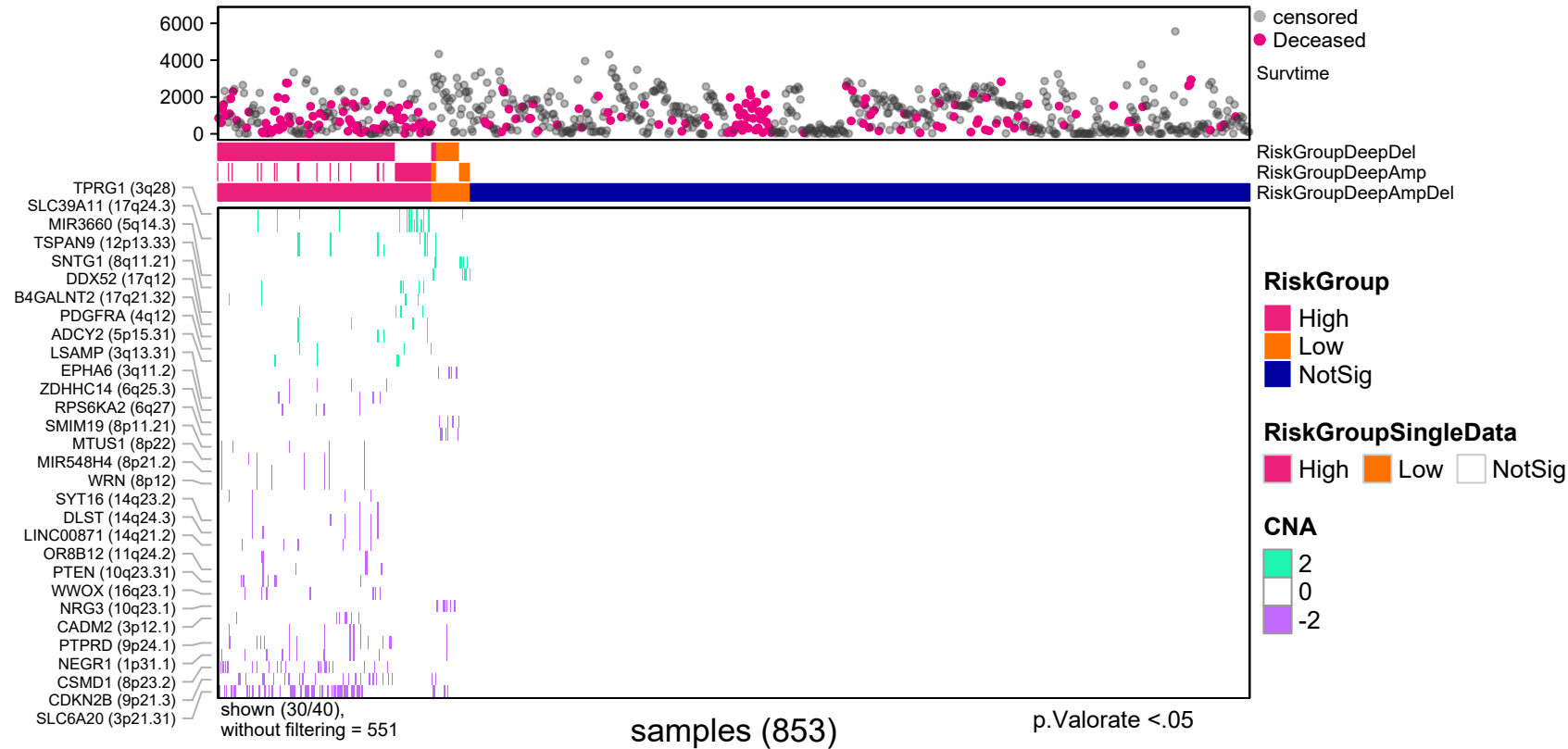
p.Valorate <.05

Number at risk

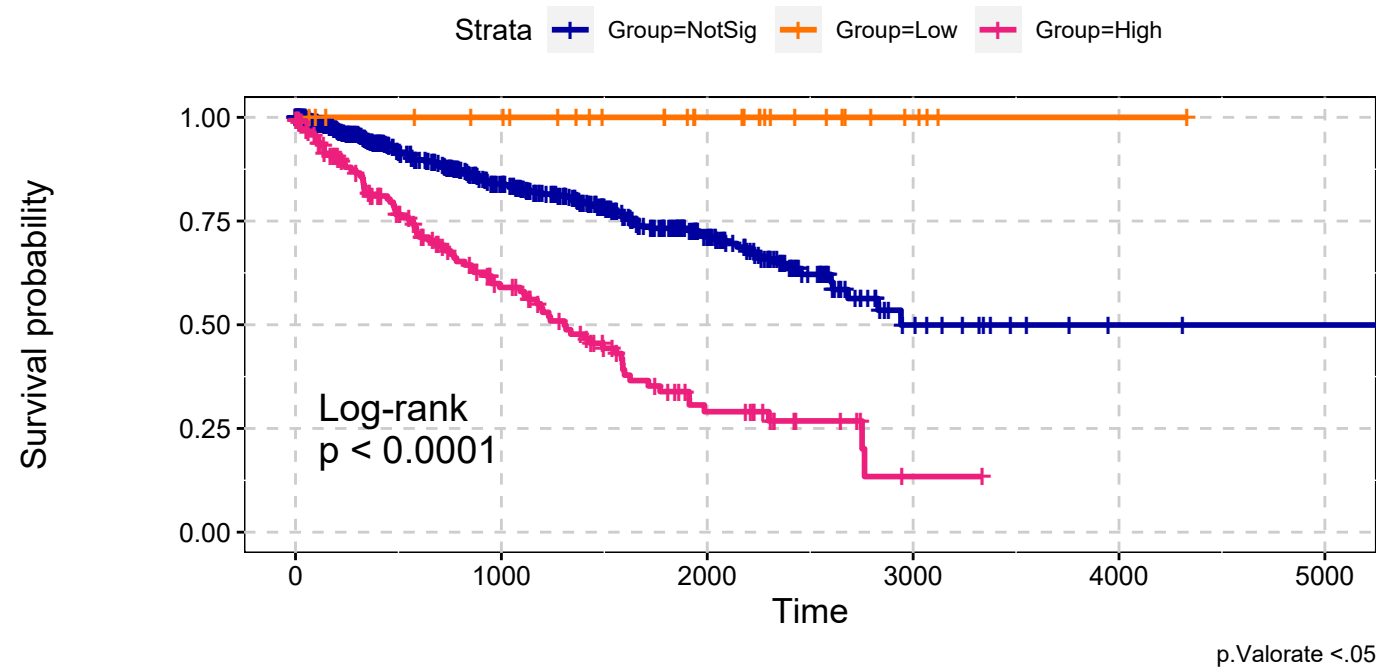


p.Valorate <.05

KIPAN  
Deep Amplifications & Deep Deletions  
Max Sum Significance Signatures

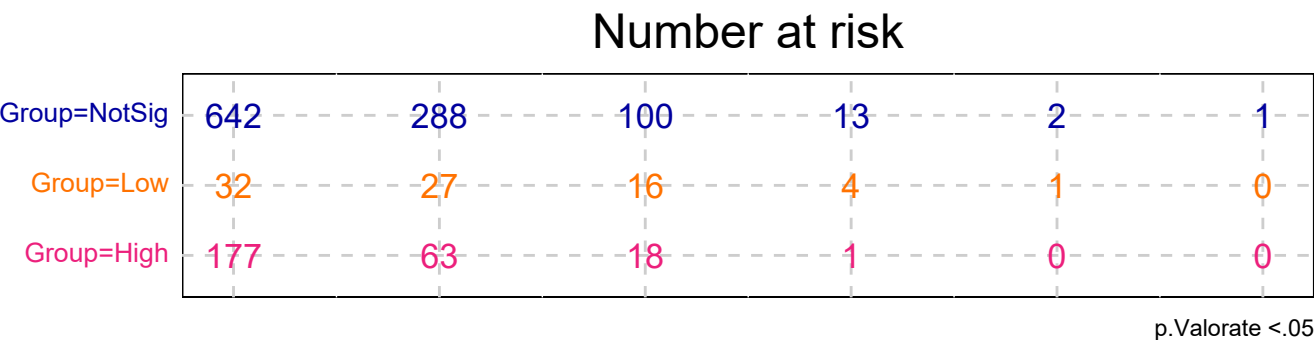


KIPAN  
Deep Amplifications & Deep Deletions  
Max Sum Significance Signatures

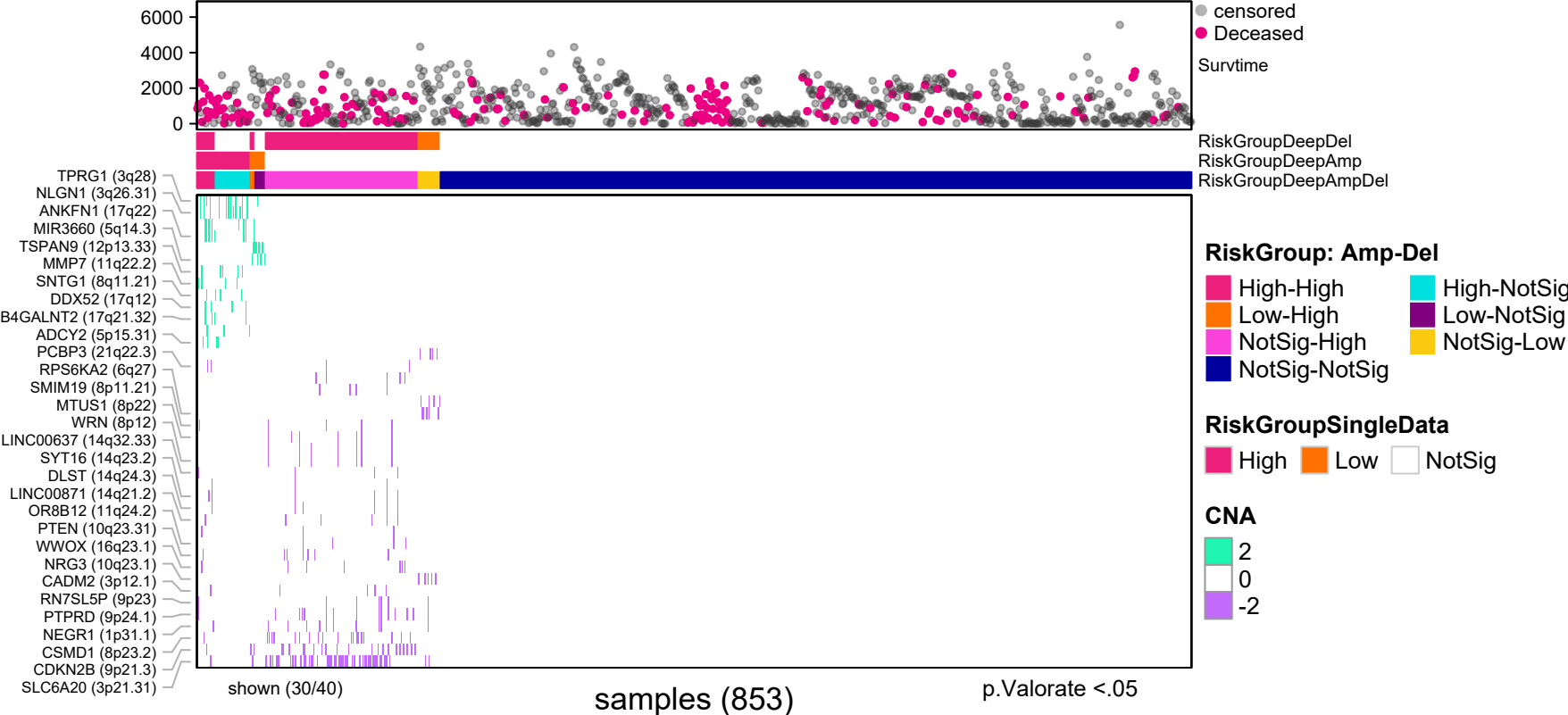


explanatory	beta	HR	L95	U95	p
Low	-17.09	0.00	0.00	Inf	0.99
High	1.14	3.12	2.35	4.13	0.00

n= 853, number of events =200  
Score(logrank) test = p <.0001

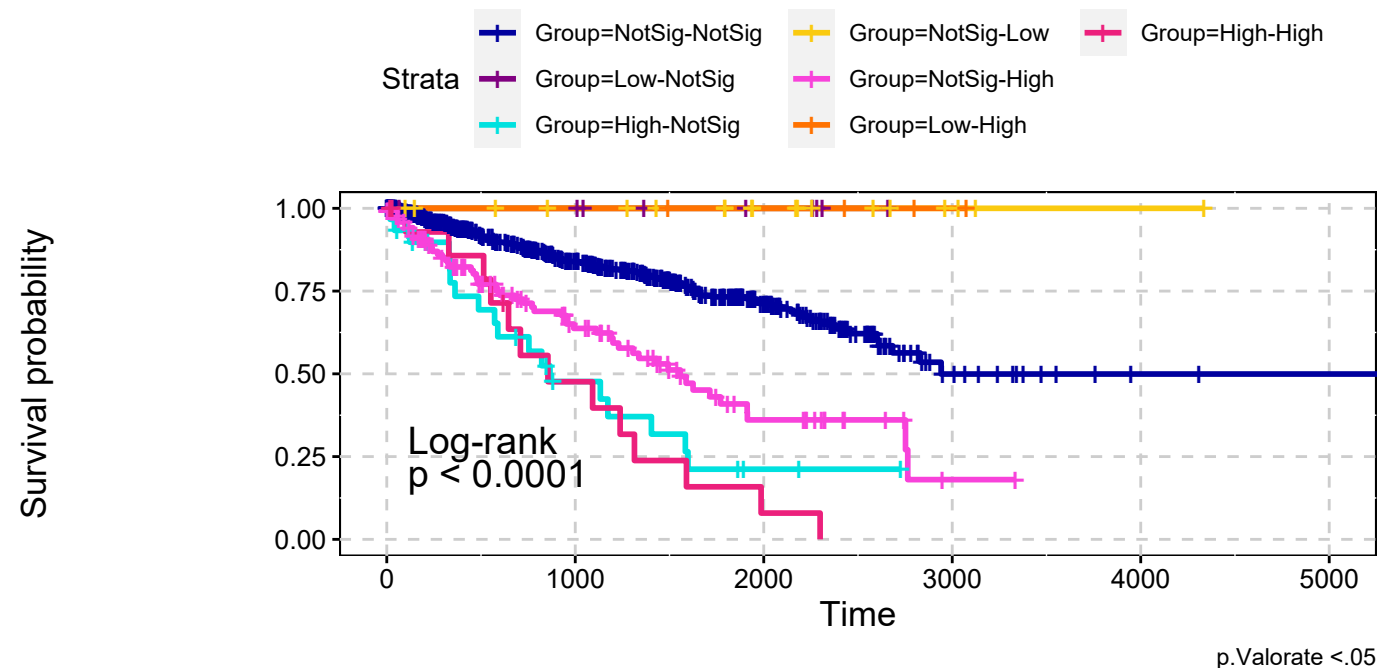


KIPAN  
Deep Amplifications & Deep Deletions  
combining signatures



# KIPAN

## Deep Amplifications & Deep Deletions combining signatures



explanatory	beta	HR	L95	U95	p
Low-NotSig	-17.33	0.00	0.00	Inf	1.00
High-NotSig	1.46	4.30	2.61	7.08	0.00
NotSig-Low	-17.31	0.00	0.00	Inf	0.99
NotSig-High	0.96	2.61	1.88	3.61	0.00
Low-High	-17.30	0.00	0.00	Inf	1.00
High-High	1.69	5.44	3.06	9.67	0.00

n= 853, number of events =200  
Score(logrank) test = p <.0001

