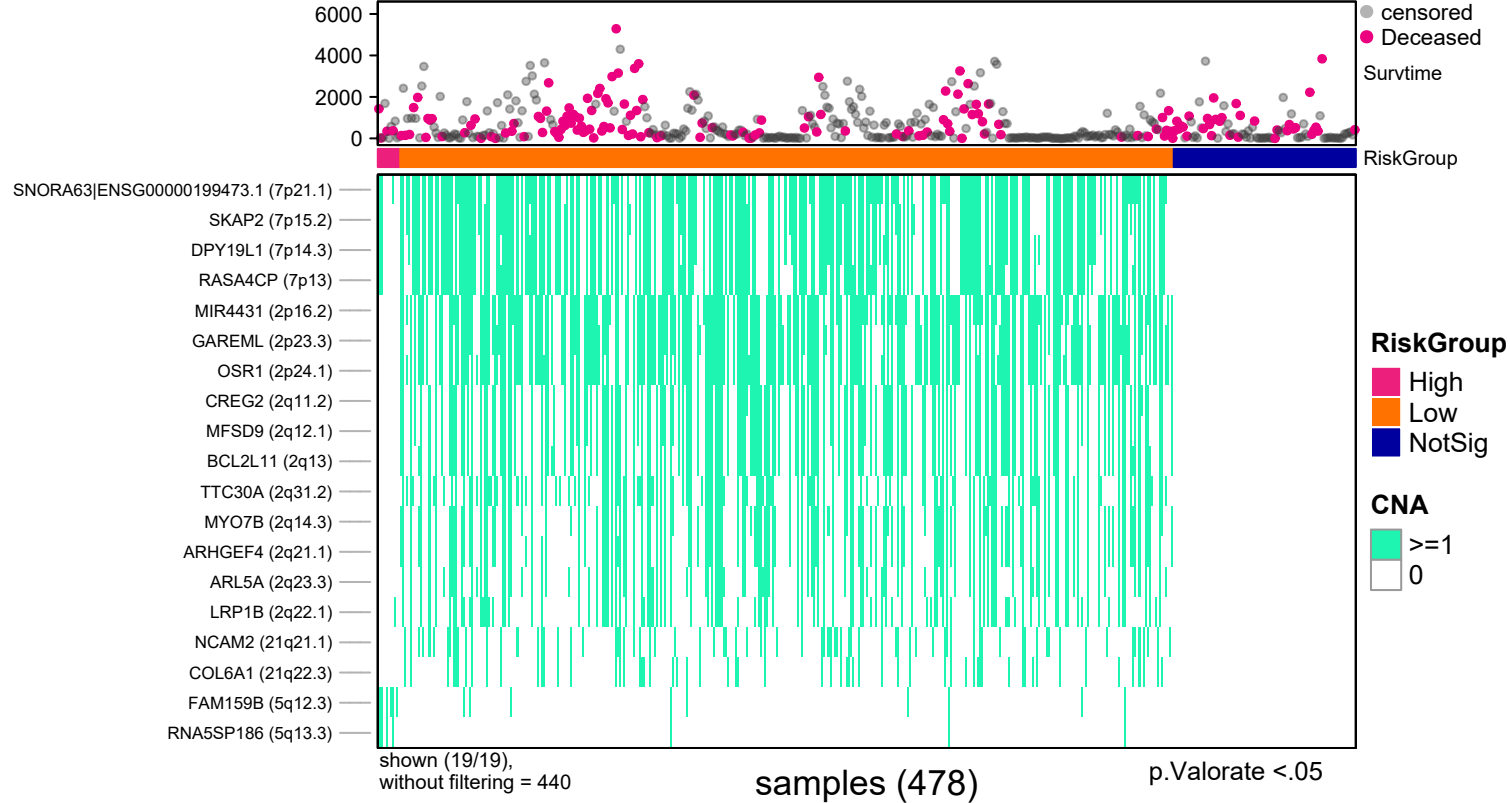
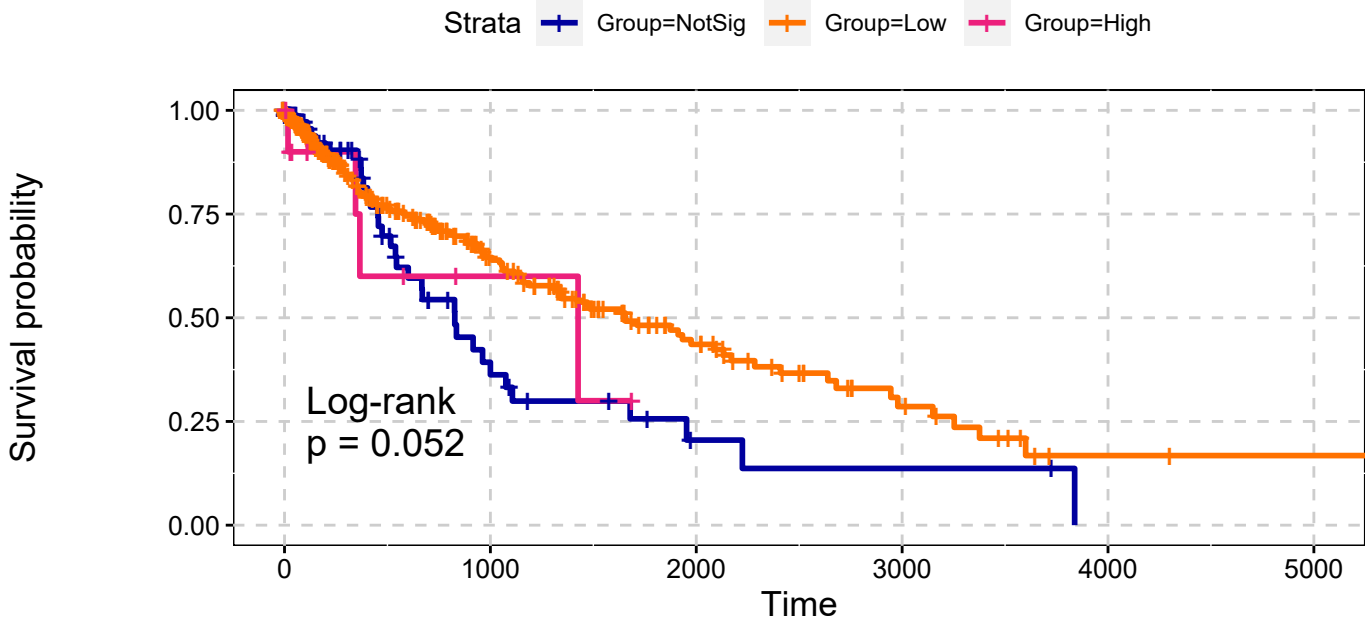


LUSC  
All Amplifications  
Single Data Signature



LUSC  
All Amplifications  
Single Data Signature

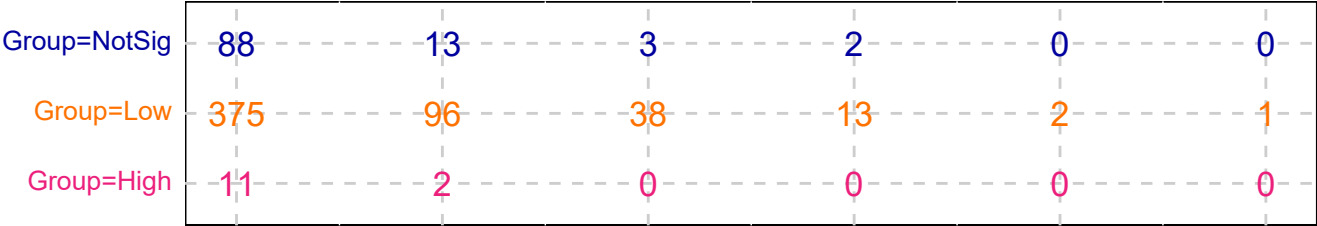


p.Valorate <.05

explanatory	beta	HR	L95	U95	p
Low	-0.46	0.63	0.43	0.93	0.02
High	0.01	1.01	0.36	2.86	0.98

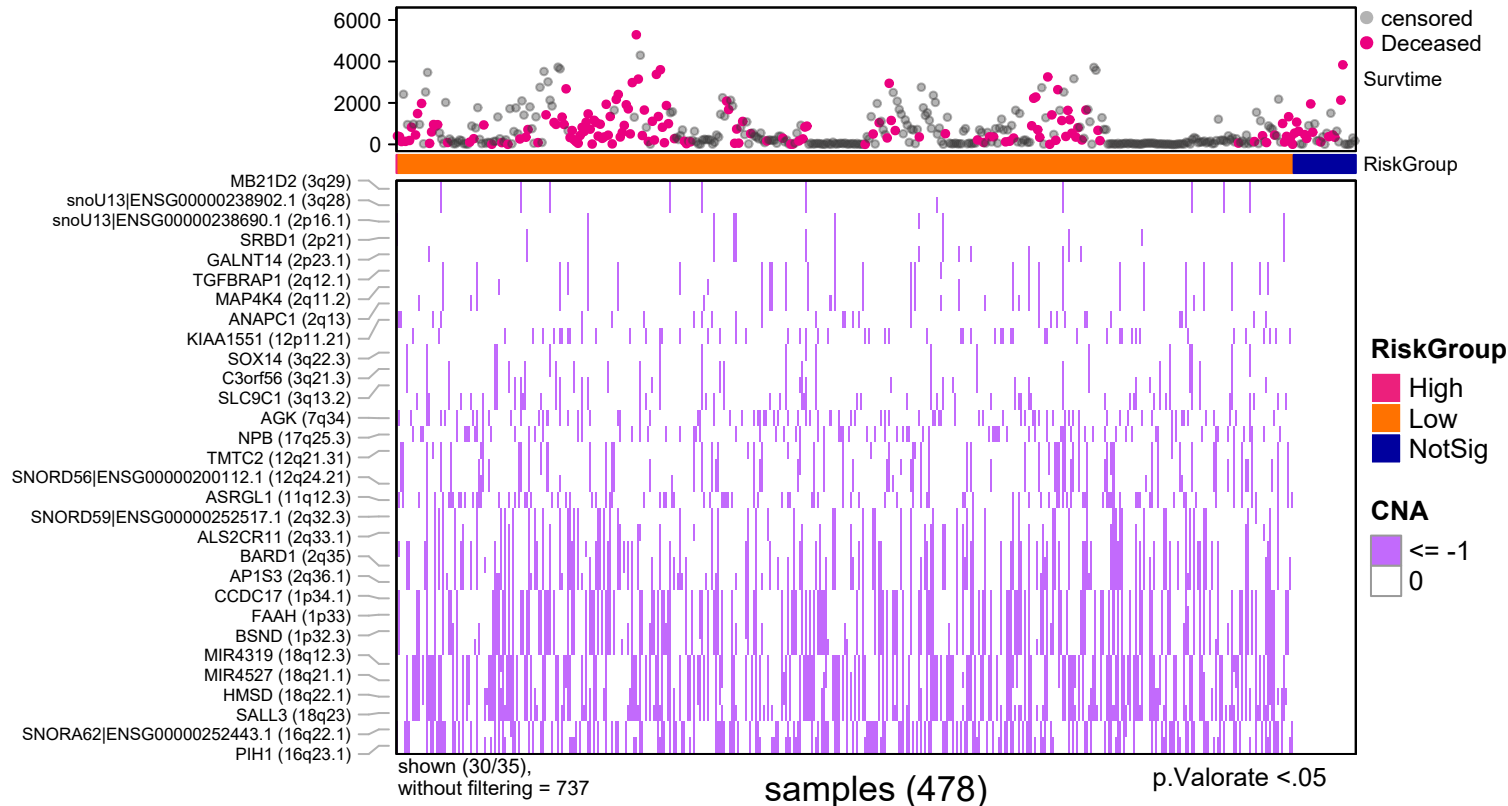
n= 478, number of events =156  
Score(logrank) test = 0.052

Number at risk

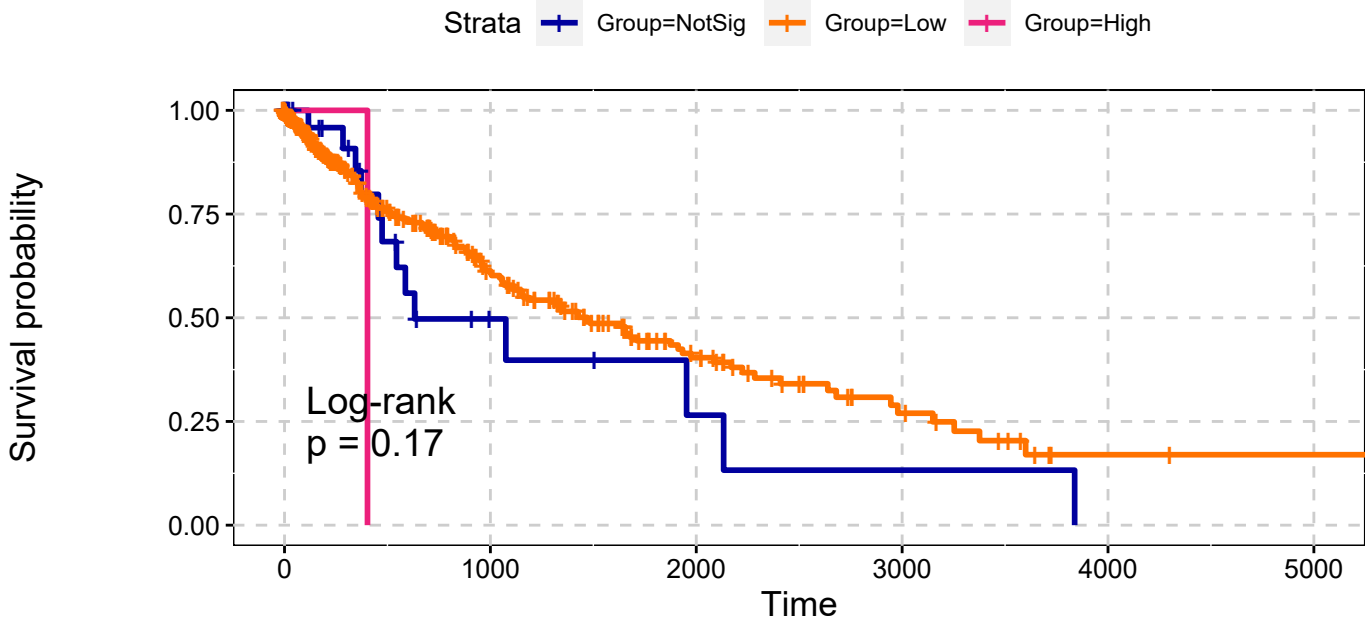


p.Valorate <.05

LUSC  
All Deletions  
Single Data Signature



LUSC  
All Deletions  
Single Data Signature

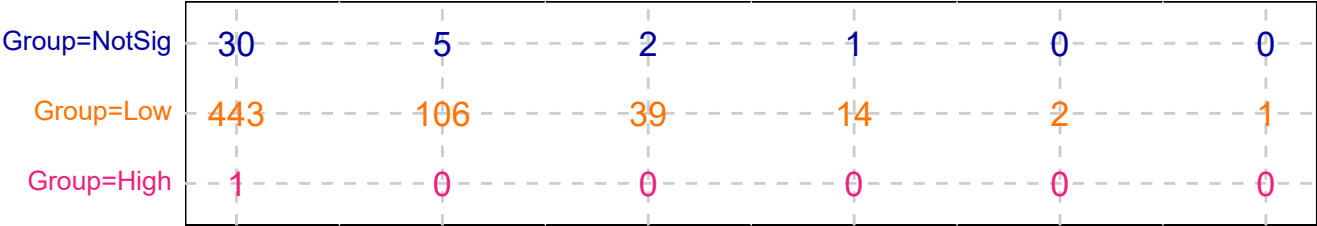


p.Valorate <.05

explanatory	beta	HR	L95	U95	p
Low	-0.31	0.73	0.41	1.30	0.28
High	1.15	3.17	0.41	24.39	0.27

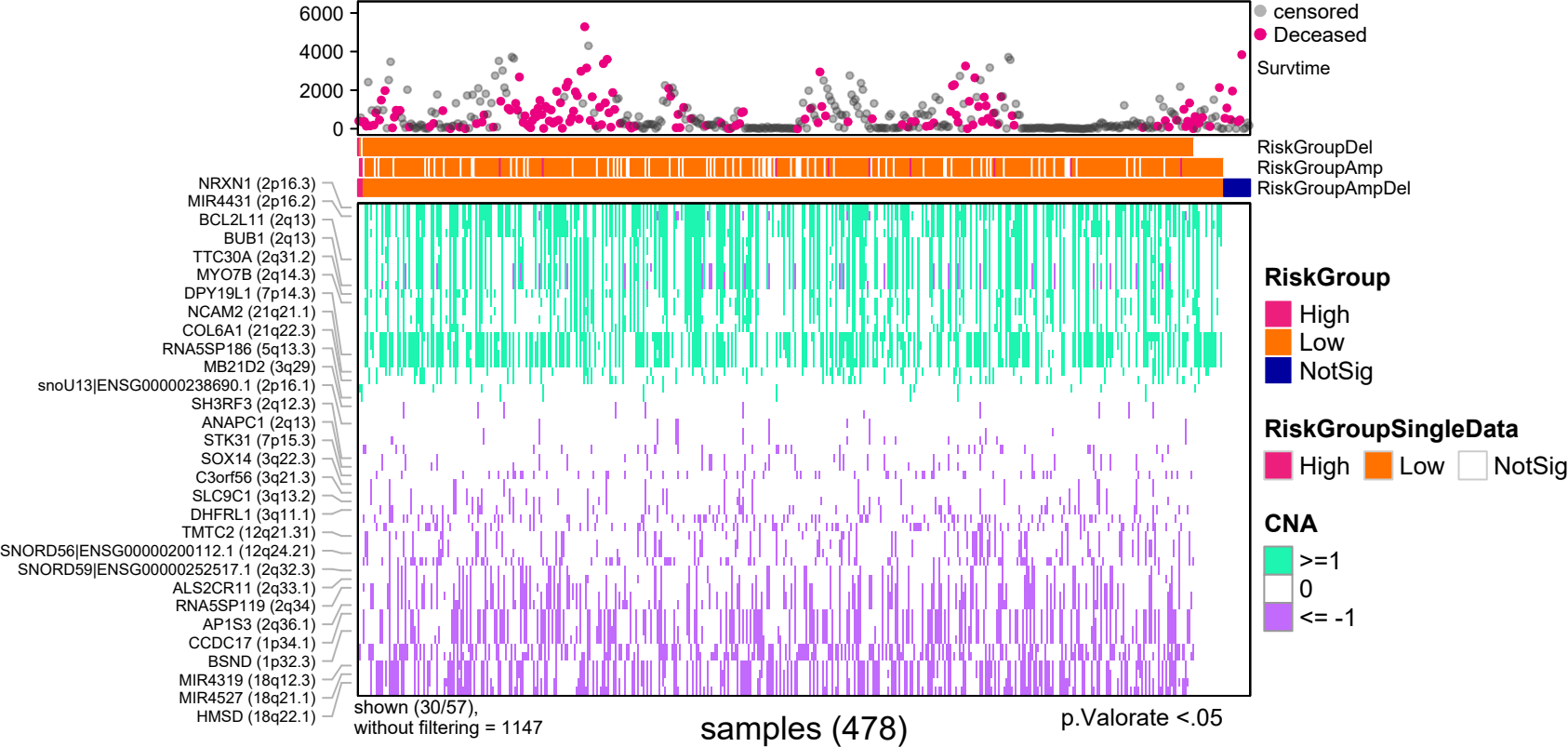
n= 478, number of events =156  
Score(logrank) test = 0.167

Number at risk

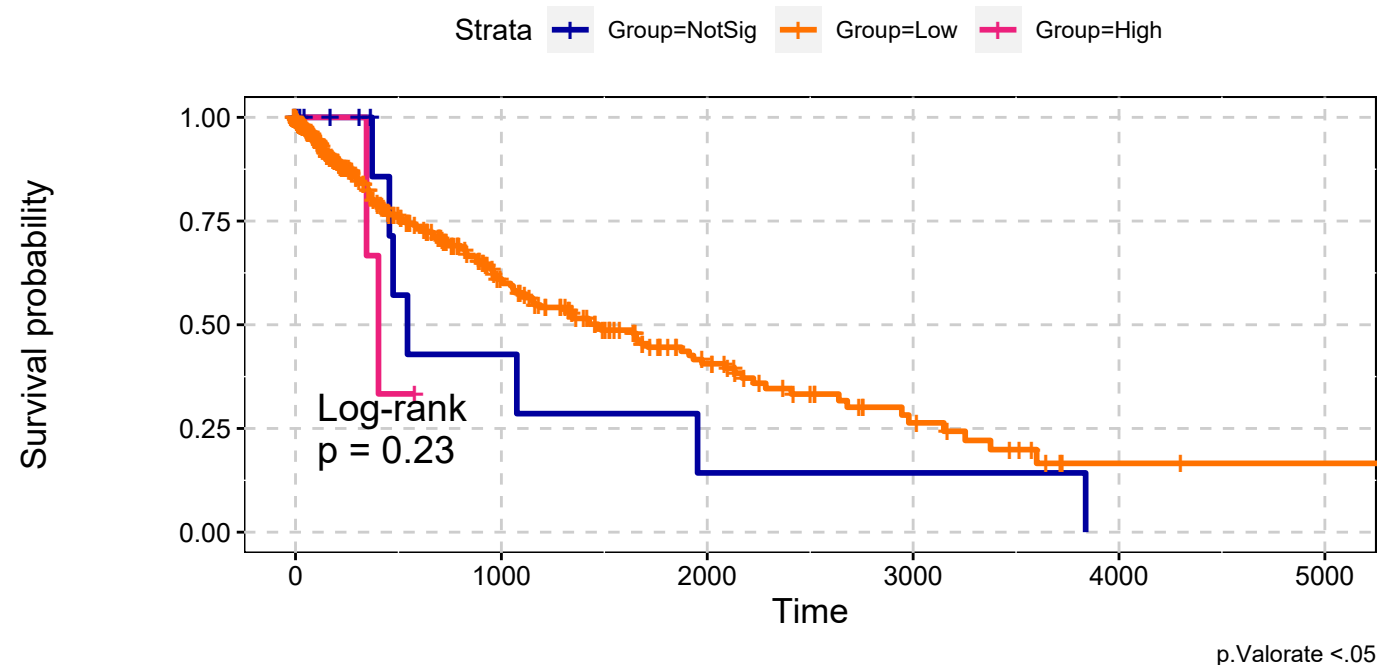


p.Valorate <.05

LUSC  
All Amplifications & All Deletions  
Max Sum Significance Signatures

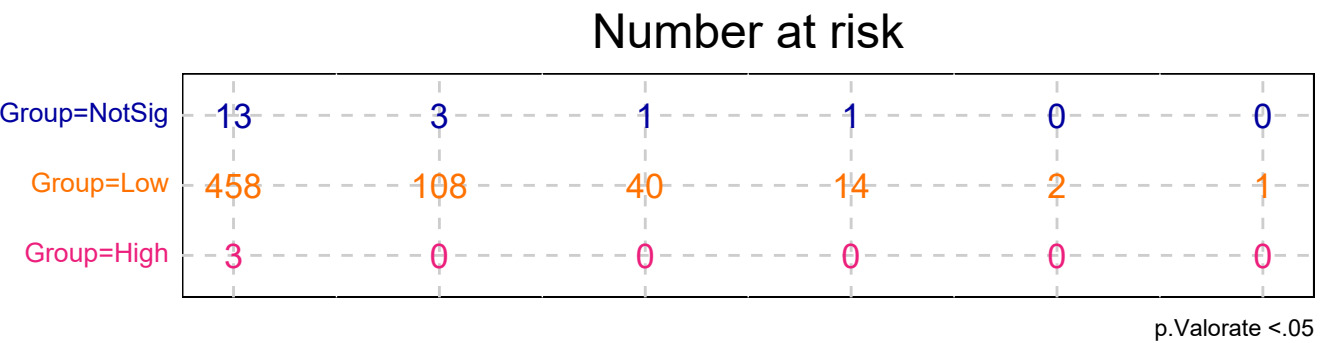


LUSC  
All Amplifications & All Deletions  
Max Sum Significance Signatures

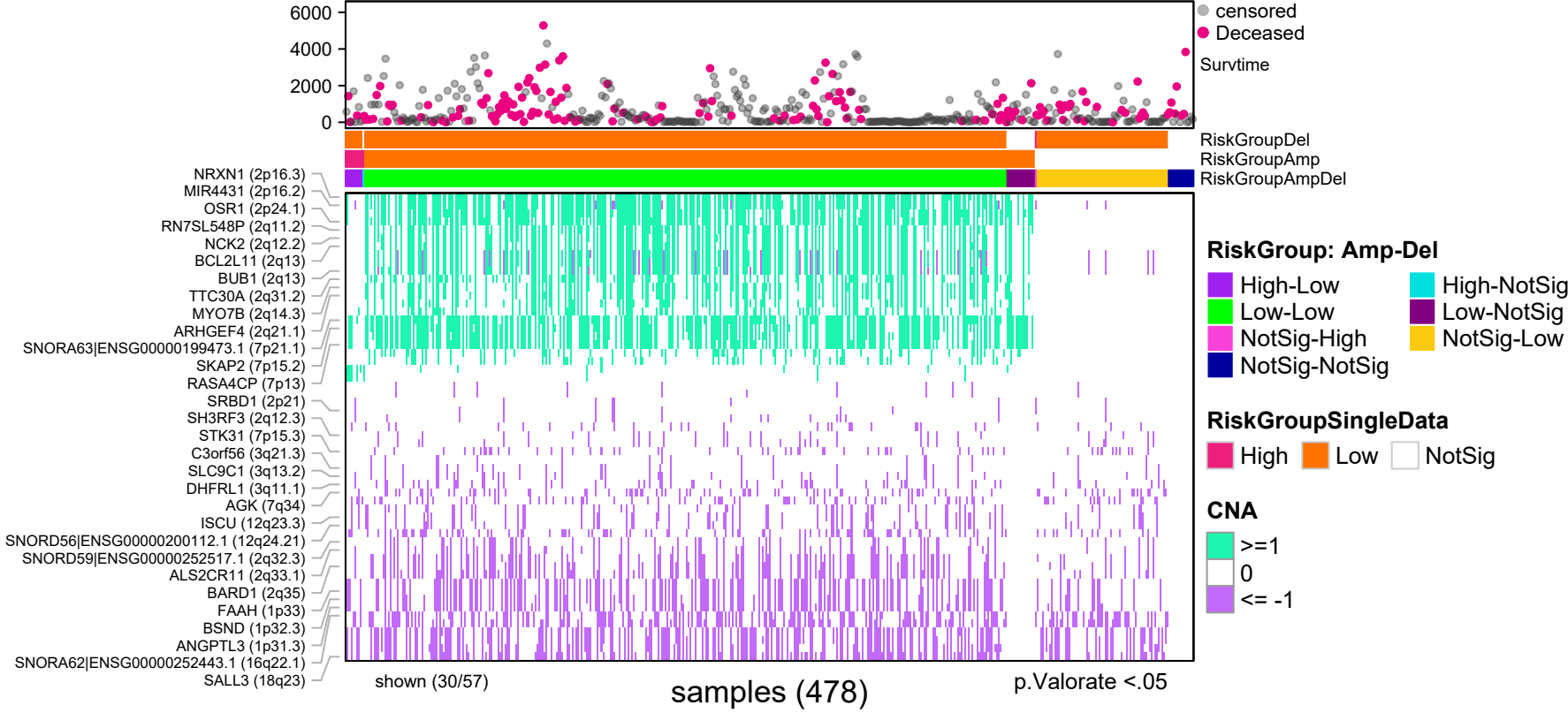


explanatory	beta	HR	L95	U95	p
Low	-0.34	0.71	0.33	1.54	0.39
High	0.69	1.98	0.41	9.68	0.40

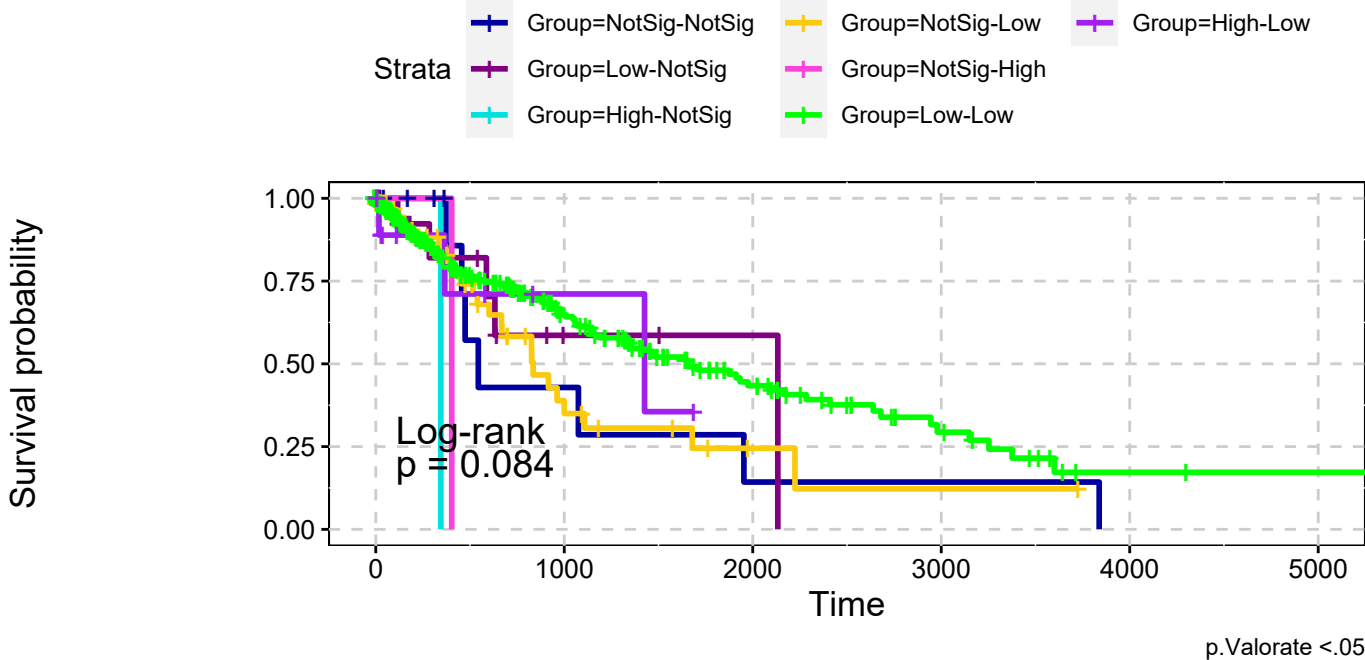
n= 478, number of events =156  
Score(logrank) test = 0.233



LUSC  
All Amplifications & All Deletions  
combining signatures



LUSC  
All Amplifications & All Deletions  
combining signatures



explanatory	beta	HR	L95	U95	p
Low-NotSig	-0.20	0.82	0.26	2.61	0.74
High-NotSig	1.42	4.15	0.50	34.24	0.19
NotSig-Low	0.04	1.04	0.45	2.44	0.92
NotSig-High	1.15	3.14	0.38	25.88	0.29
Low-Low	-0.41	0.66	0.30	1.43	0.29
High-Low	-0.16	0.85	0.22	3.34	0.82

n= 478, number of events =156  
Score(logrank) test = 0.083

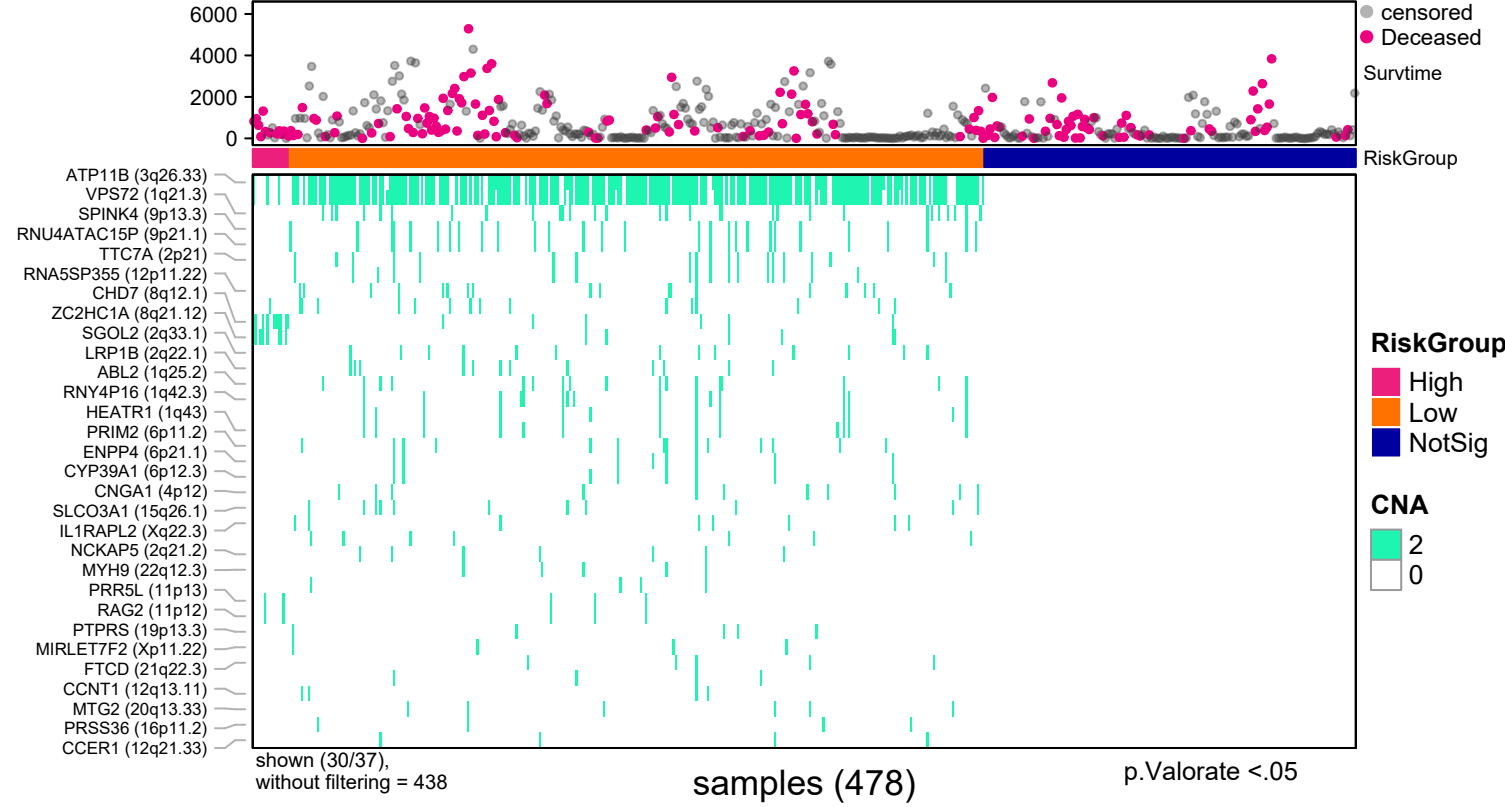
Number at risk

Group=NotSig-NotSig	13	3	1	1	0	0
Group=Low-NotSig	16	2	1	0	0	0
Group=High-NotSig	1	0	0	0	0	0
Group=NotSig-Low	74	10	2	1	0	0
Group=NotSig-High	1	0	0	0	0	0
Group=Low-Low	359	94	37	13	2	1
Group=High-Low	10	2	0	0	0	0

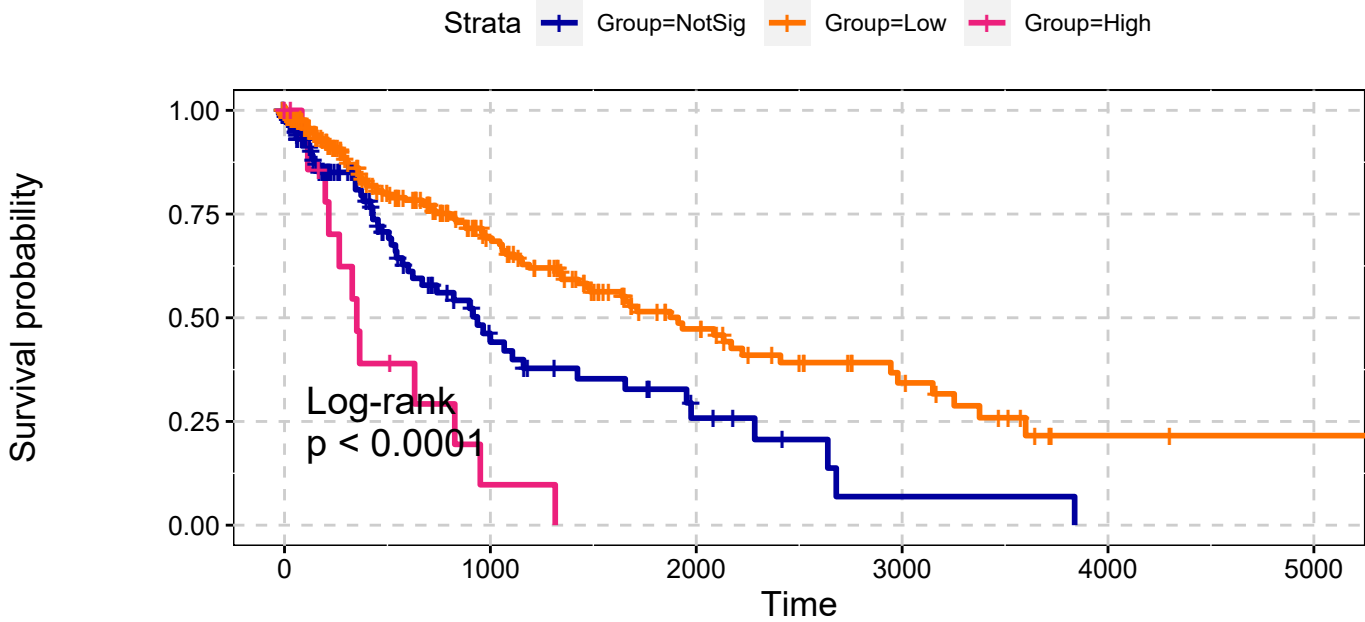
RiskGroup: Amp-Del, p.Valorate <.05



LUSC  
Deep Amplifications  
Single Data Signature



LUSC  
Deep Amplifications  
Single Data Signature

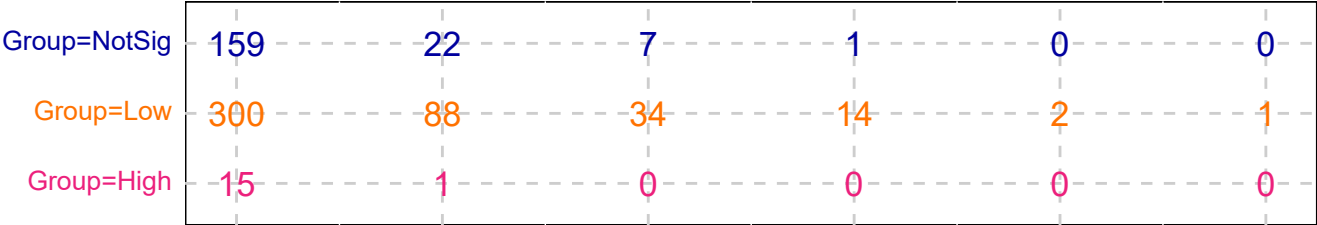


p.Valorate <.05

explanatory	beta	HR	L95	U95	p
Low	-0.63	0.53	0.38	0.75	0.00
High	0.96	2.62	1.39	4.93	0.00

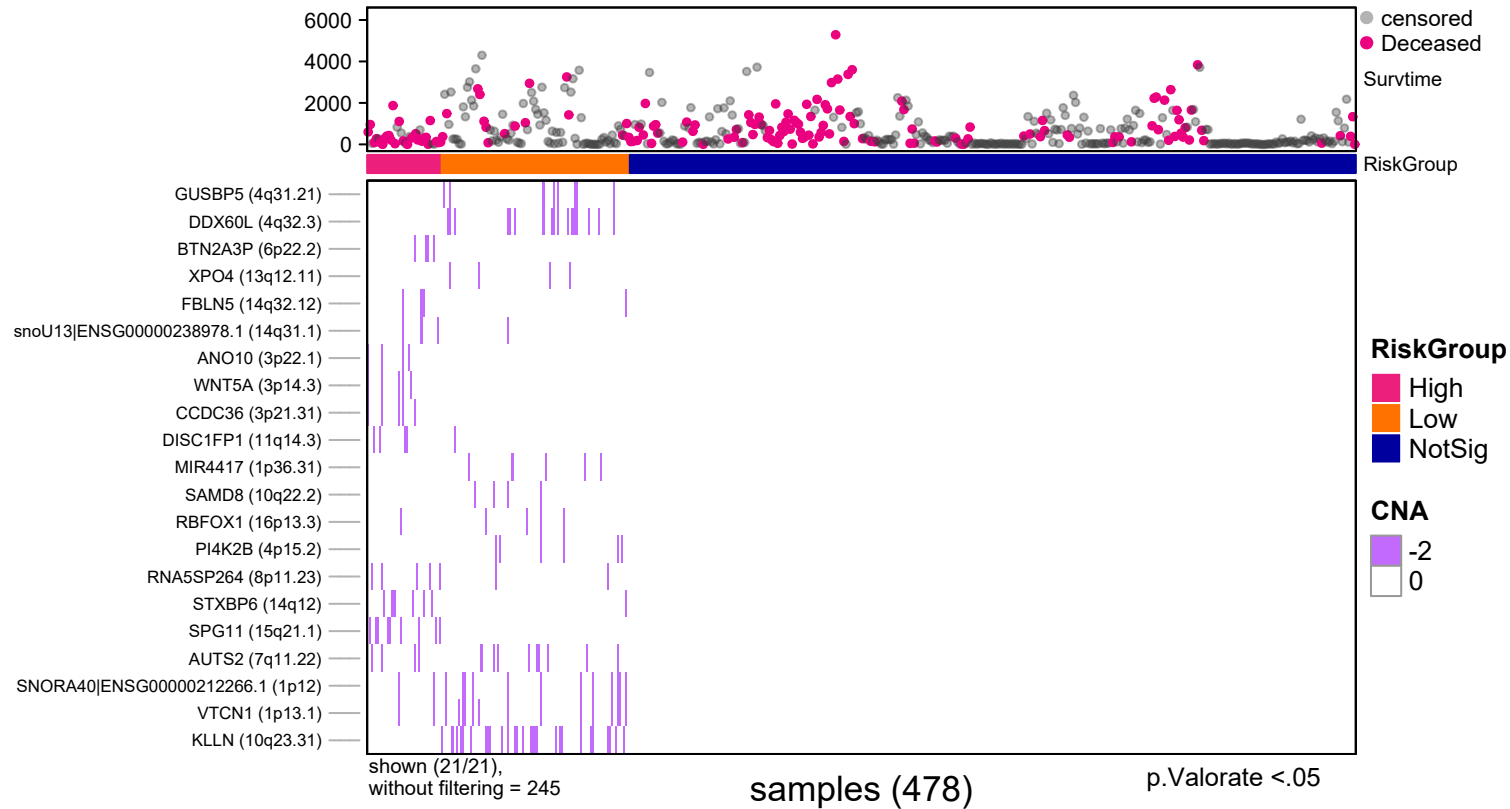
n= 478, number of events =156  
Score(logrank) test = p <.0001

Number at risk

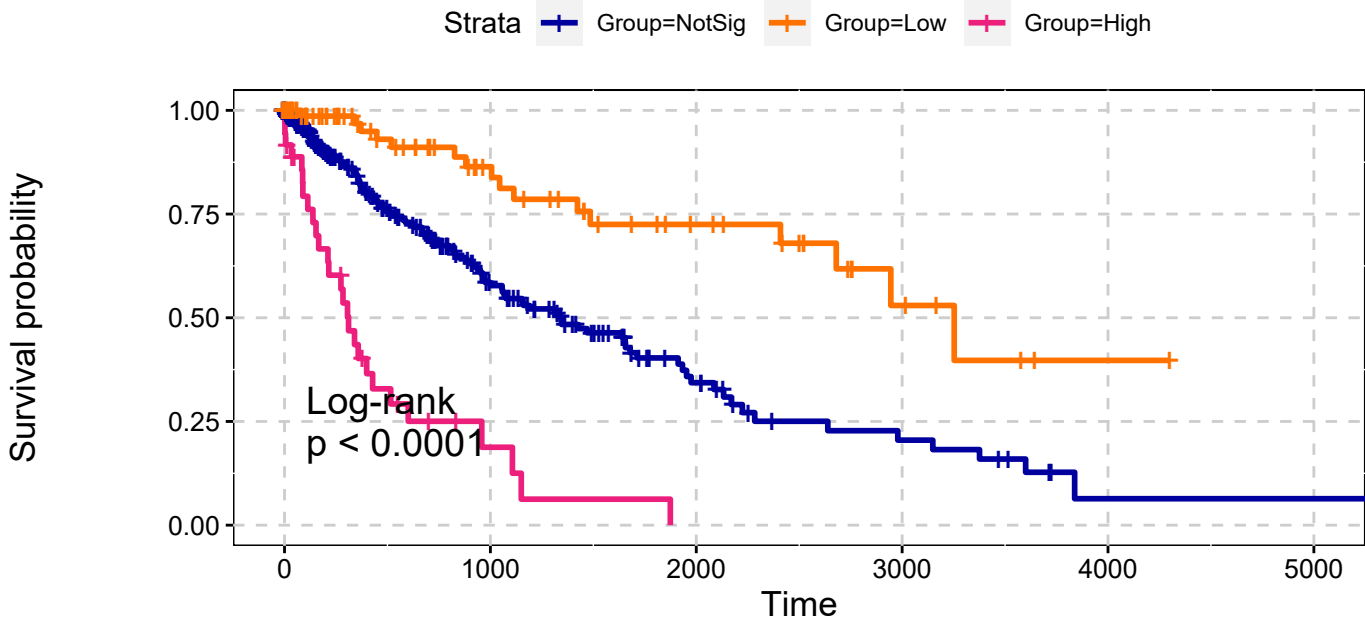


p.Valorate <.05

LUSC  
Deep Deletions  
Single Data Signature



LUSC  
Deep Deletions  
Single Data Signature



explanatory	beta	HR	L95	U95	p
Low	-1.10	0.33	0.20	0.57	0.00
High	1.39	4.01	2.60	6.18	0.00

n= 478, number of events =156  
Score(logrank) test = p <.0001

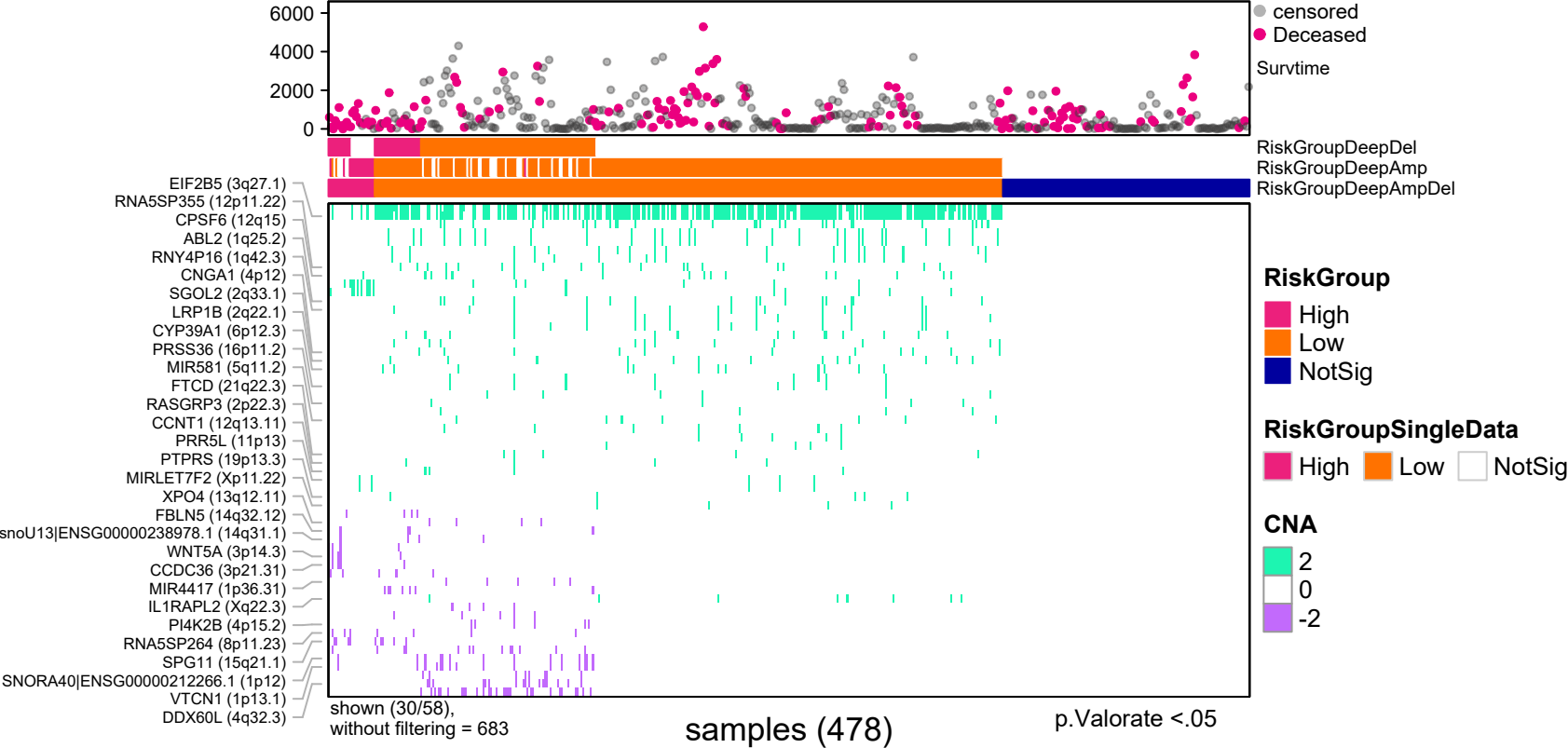
p.Valorate <.05

Number at risk

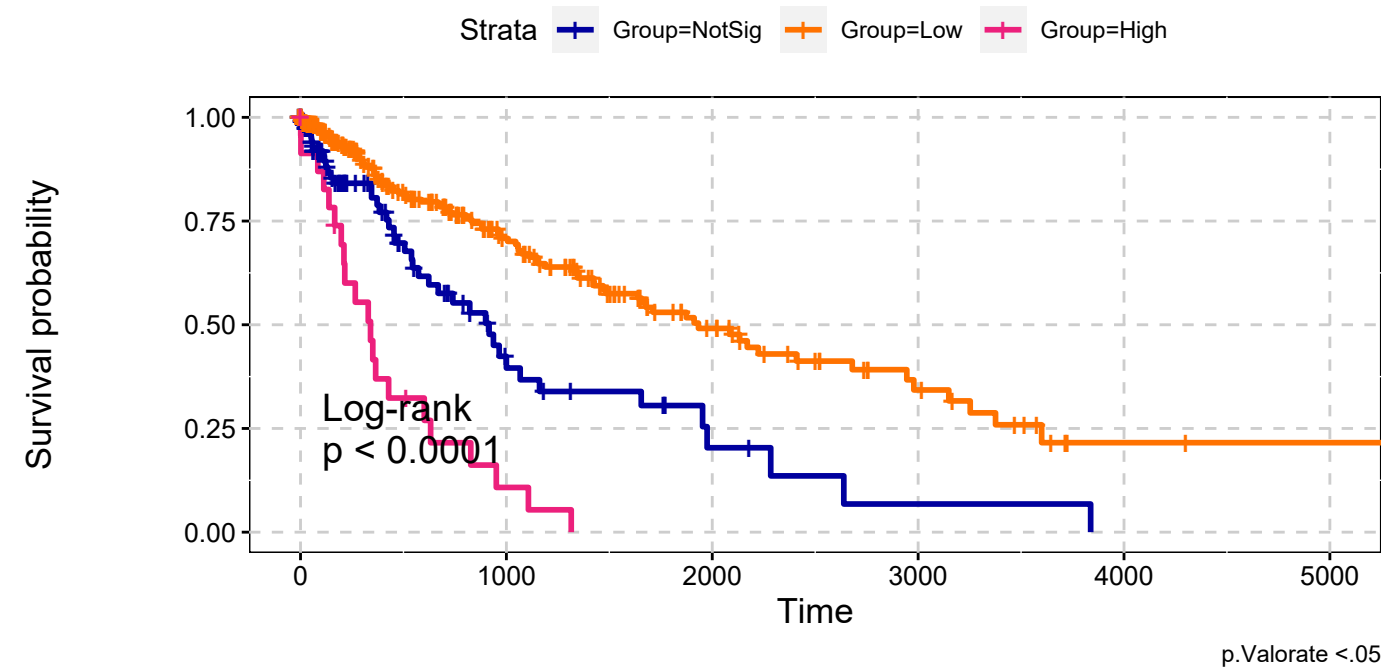
Group=NotSig	348	75	23	9	1	1
Group=Low	90	33	18	6	1	0
Group=High	36	3	0	0	0	0

p.Valorate <.05

LUSC  
Deep Amplifications & Deep Deletions  
Max Sum Significance Signatures

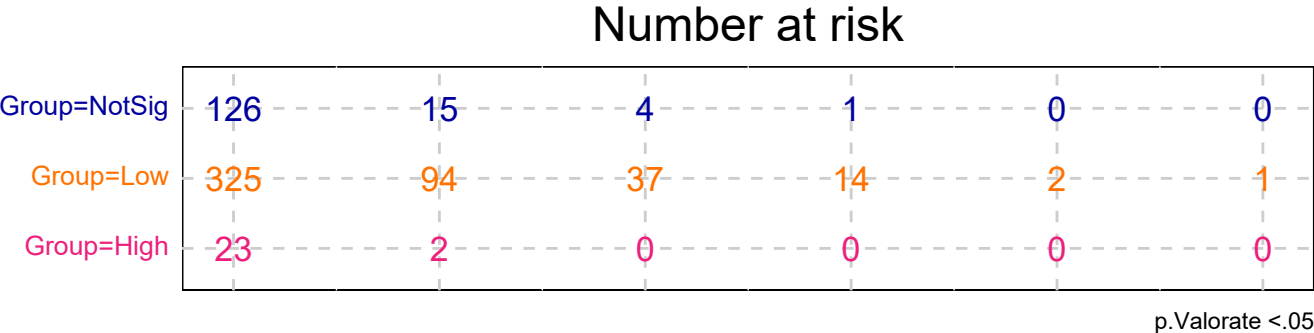


LUSC  
Deep Amplifications & Deep Deletions  
Max Sum Significance Signatures

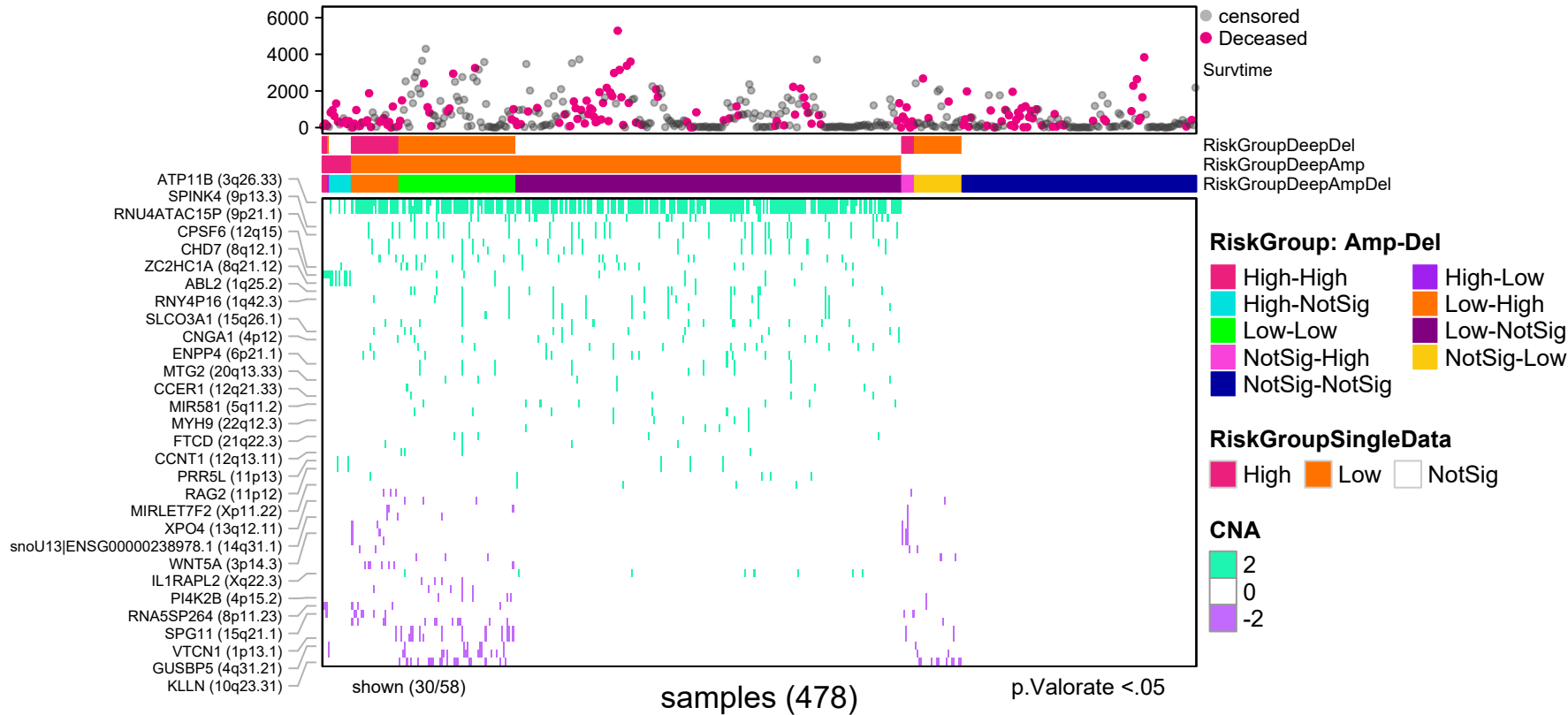


explanatory	beta	HR	L95	U95	p
Low	-0.77	0.46	0.32	0.67	0.00
High	1.07	2.92	1.72	4.96	0.00

n= 478, number of events =156  
Score(logrank) test = p <.0001

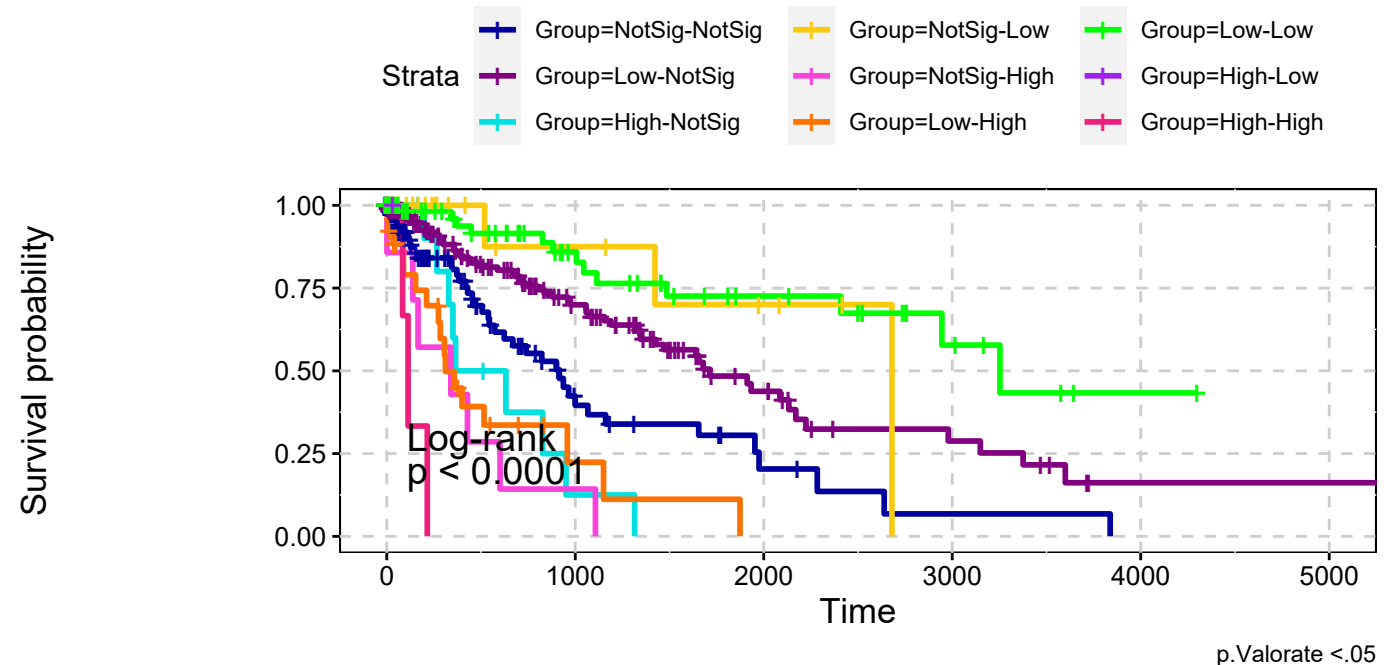


LUSC  
Deep Amplifications & Deep Deletions  
combining signatures



# LUSC

## Deep Amplifications & Deep Deletions combining signatures



explanatory	beta	HR	L95	U95	p
Low-NotSig	-0.71	0.49	0.33	0.73	0.00
High-NotSig	0.73	2.08	1.01	4.29	0.05
NotSig-Low	-1.41	0.24	0.08	0.79	0.02
NotSig-High	1.19	3.30	1.48	7.38	0.00
Low-High	0.85	2.33	1.32	4.11	0.00
Low-Low	-1.56	0.21	0.11	0.40	0.00
High-Low	-11.65	0.00	0.00	Inf	1.00
High-High	2.39	10.92	3.27	36.48	0.00

n= 478, number of events =156  
Score(logrank) test = p <.0001

