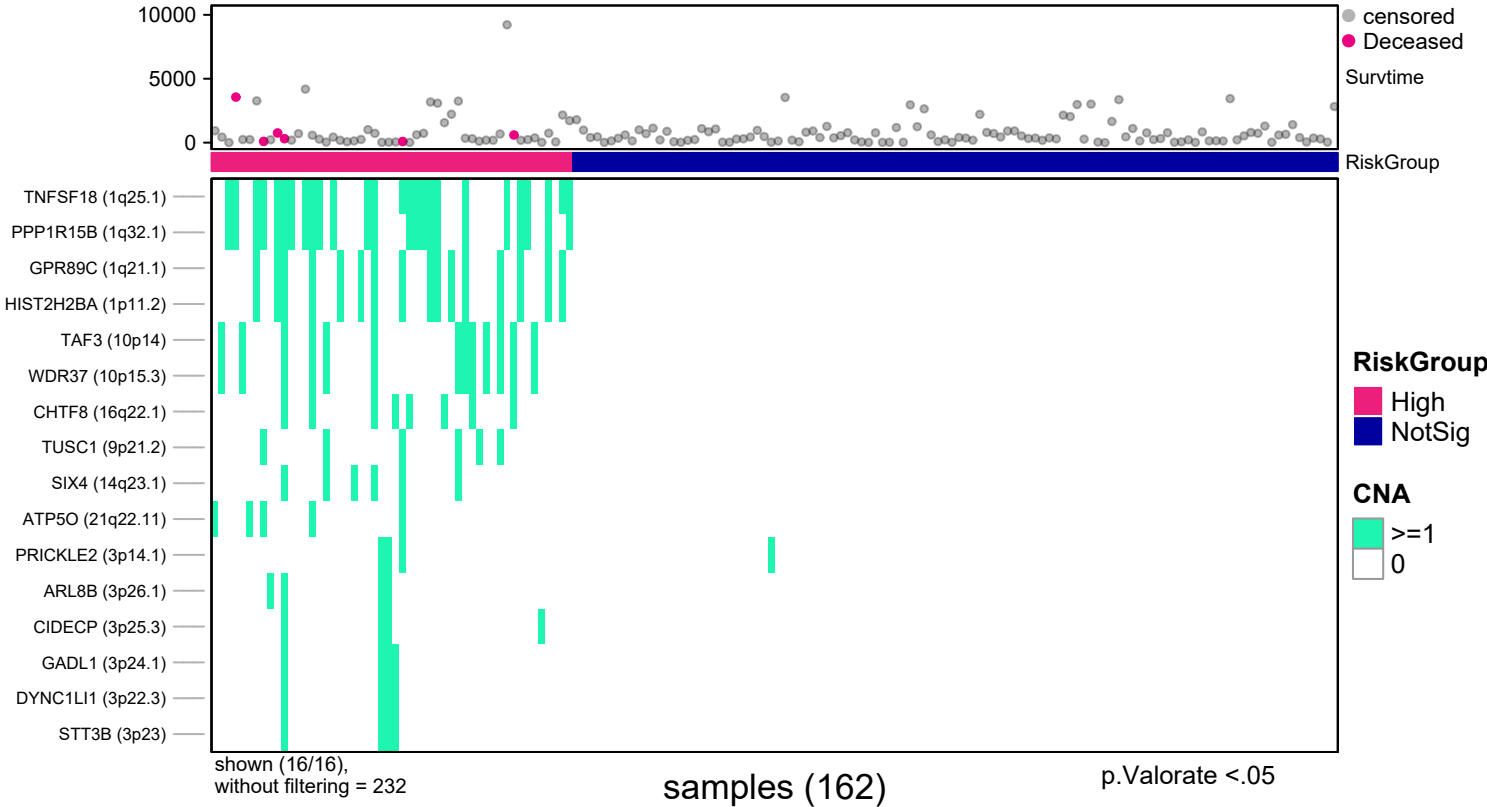
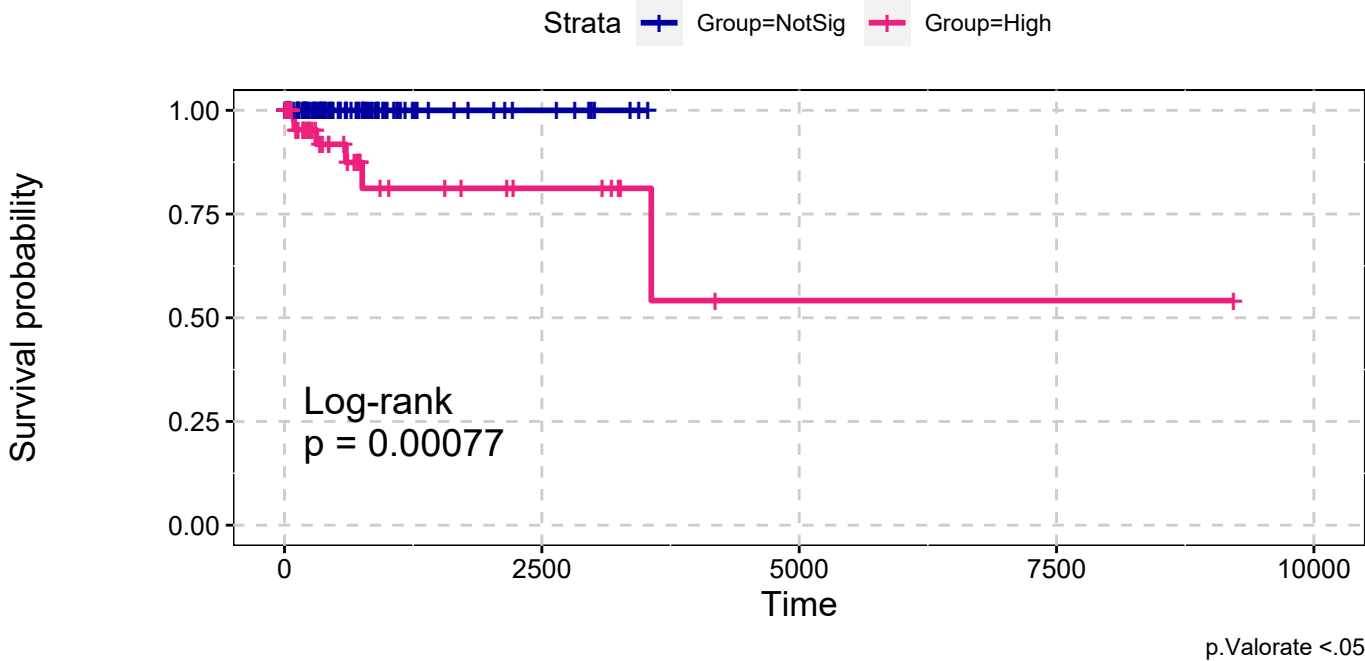


PCPG
All Amplifications
Single Data Signature

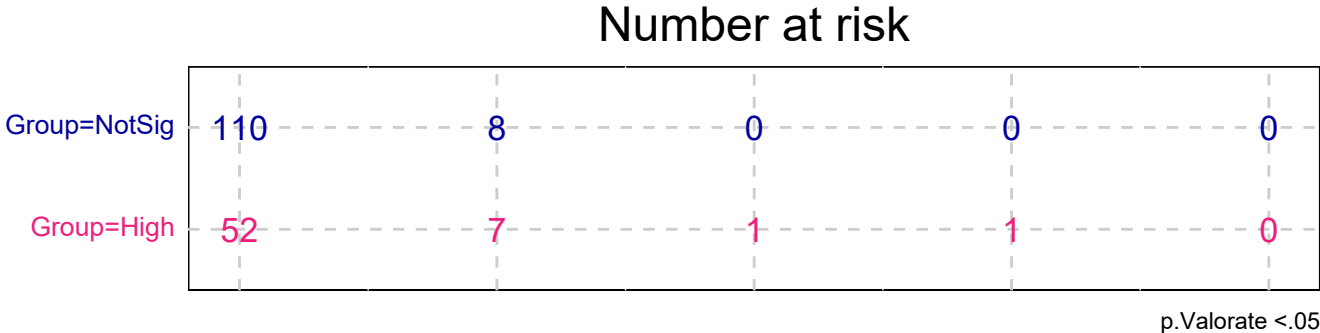


PCPG
All Amplifications
Single Data Signature

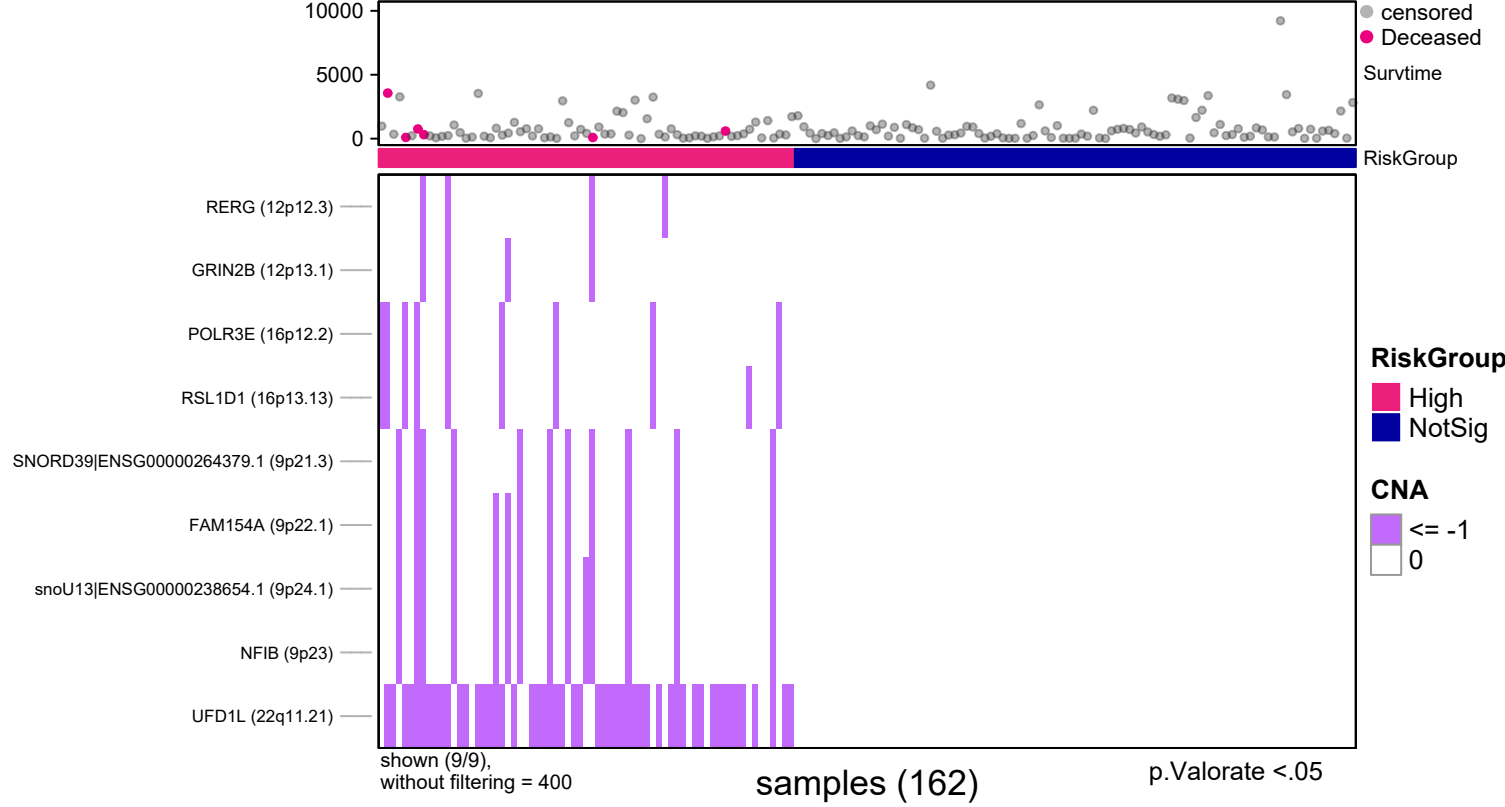


explanatory	beta	HR	L95	U95	p
High	21.40	1967034176.18	0.00	Inf	1.00

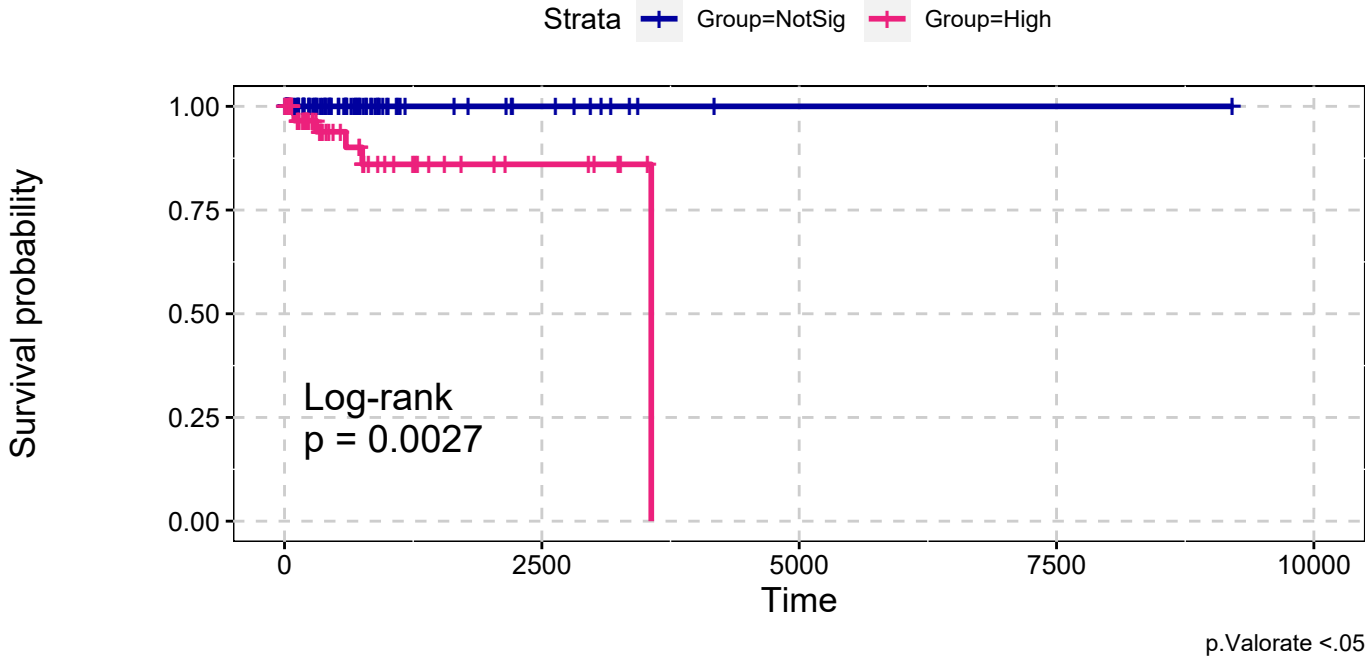
n= 162, number of events =6
Score(logrank) test = 0.001



PCPG
All Deletions
Single Data Signature

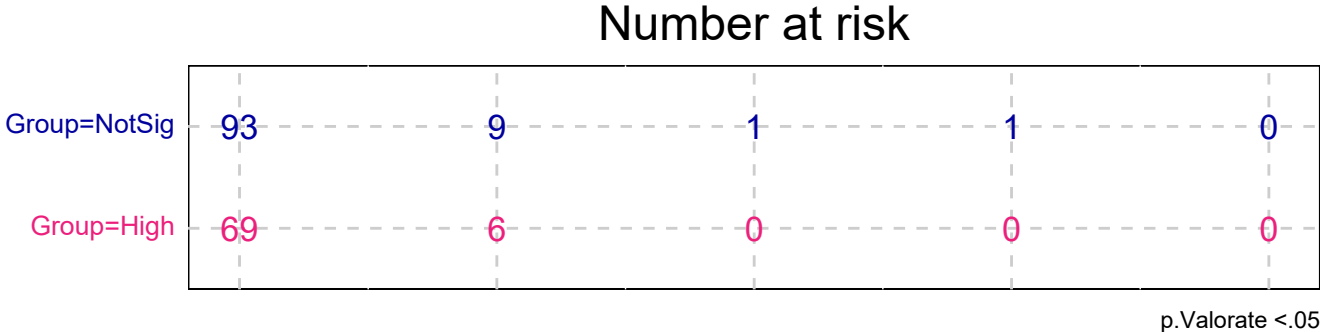


PCPG
All Deletions
Single Data Signature

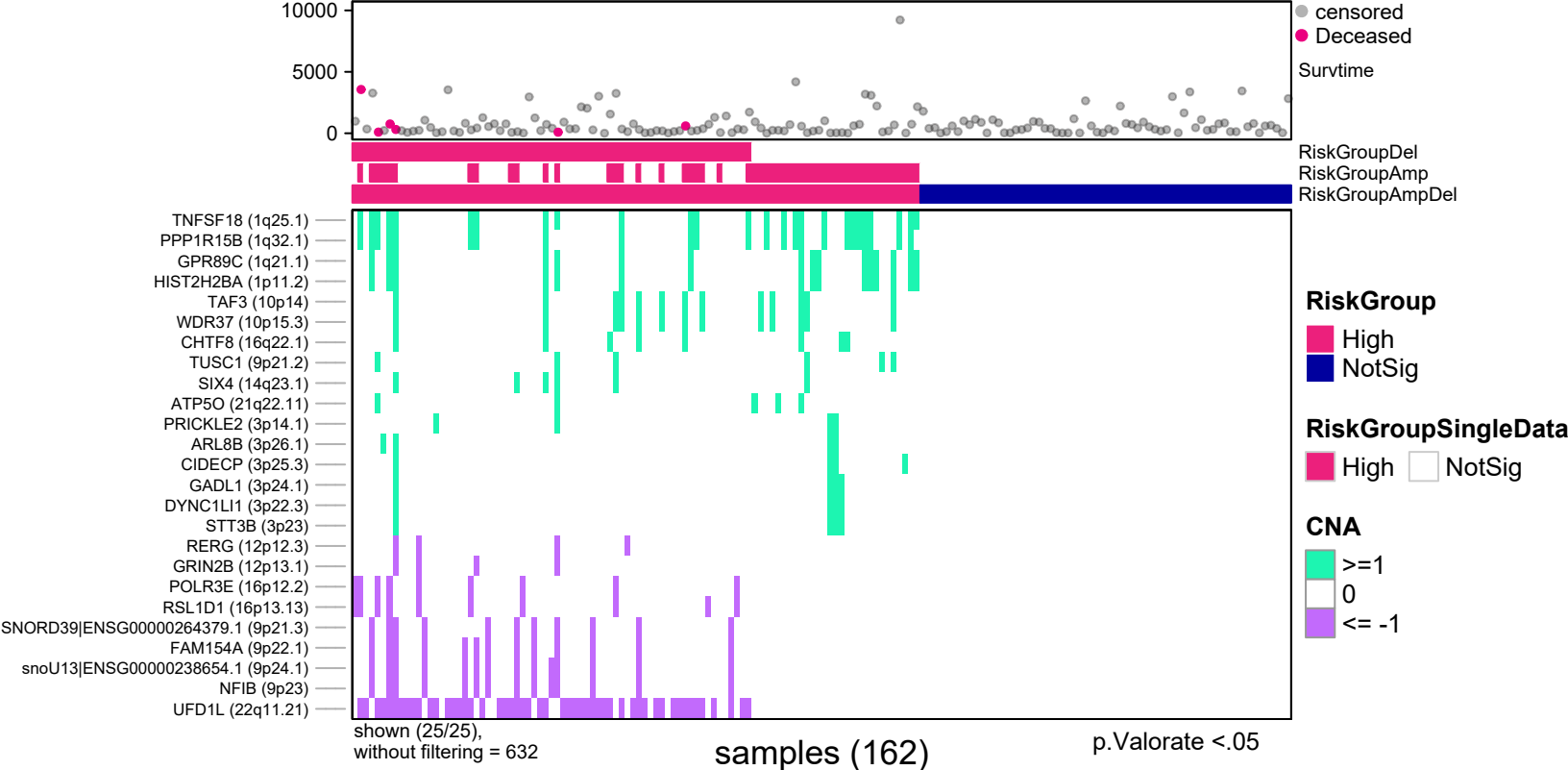


explanatory	beta	HR	L95	U95	p
High	20.69	971260644.90	0.00	Inf	1.00

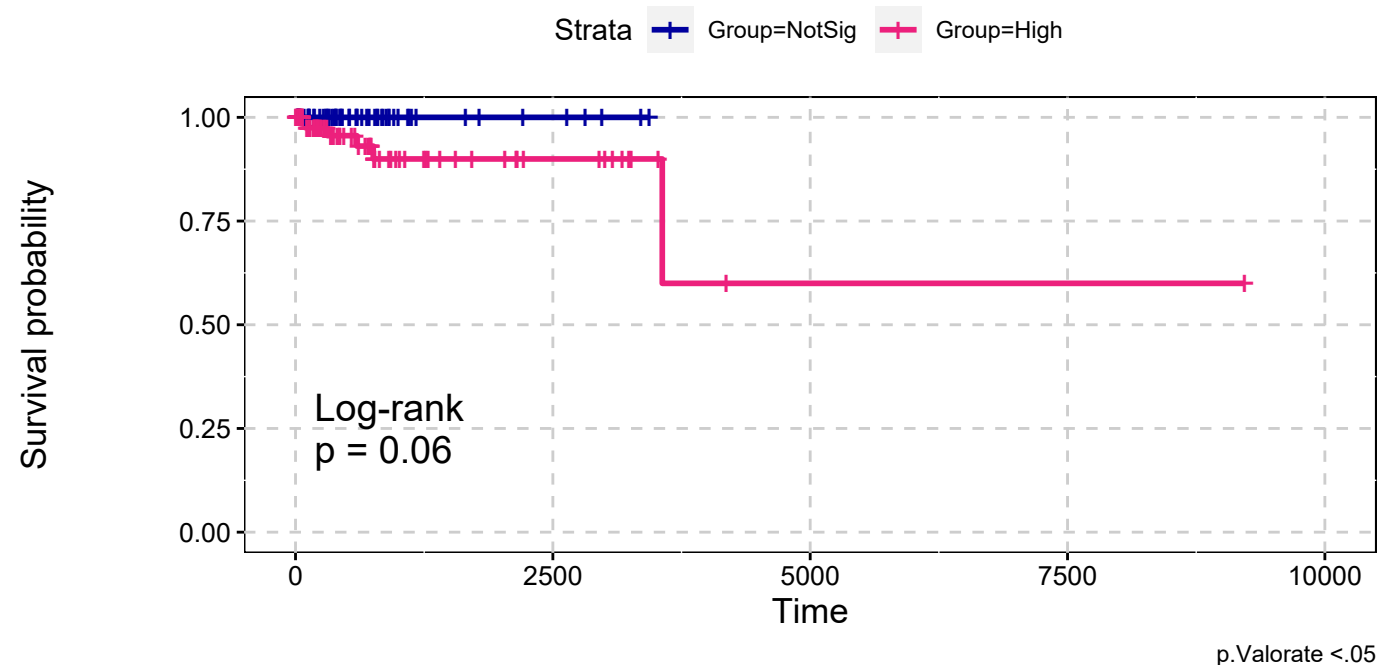
n= 162, number of events =6
Score(logrank) test = 0.003



PCPG
All Amplifications & All Deletions
Max Sum Significance Signatures

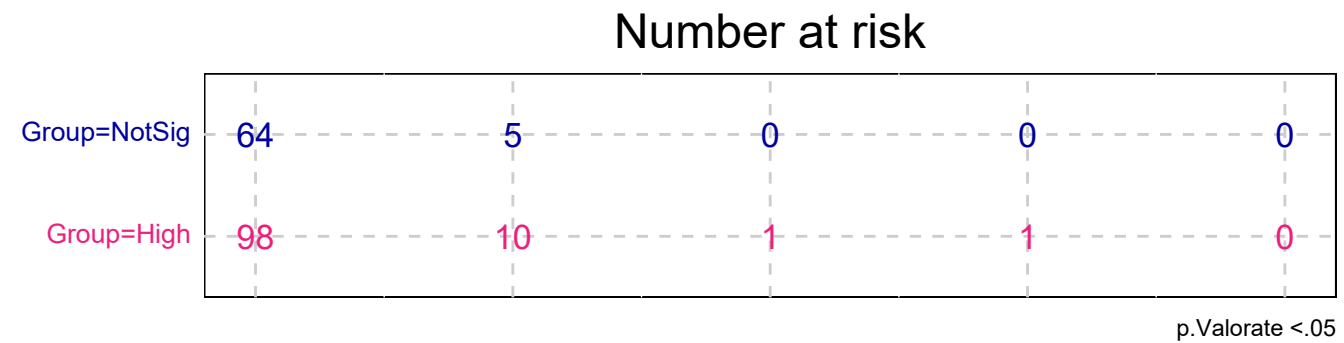


PCPG
All Amplifications & All Deletions
Max Sum Significance Signatures

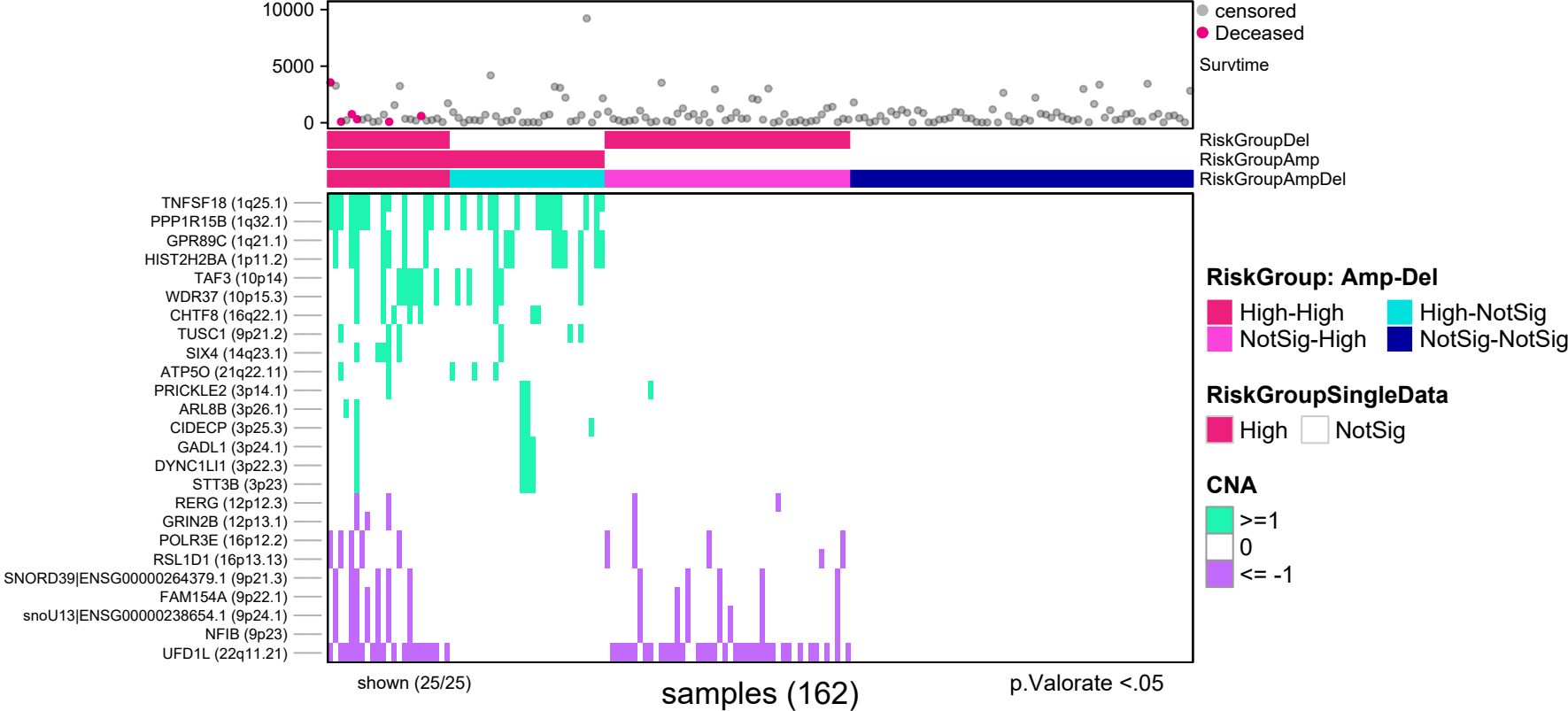


explanatory	beta	HR	L95	U95	p
High	19.90	440429404.30	0.00	Inf	1.00

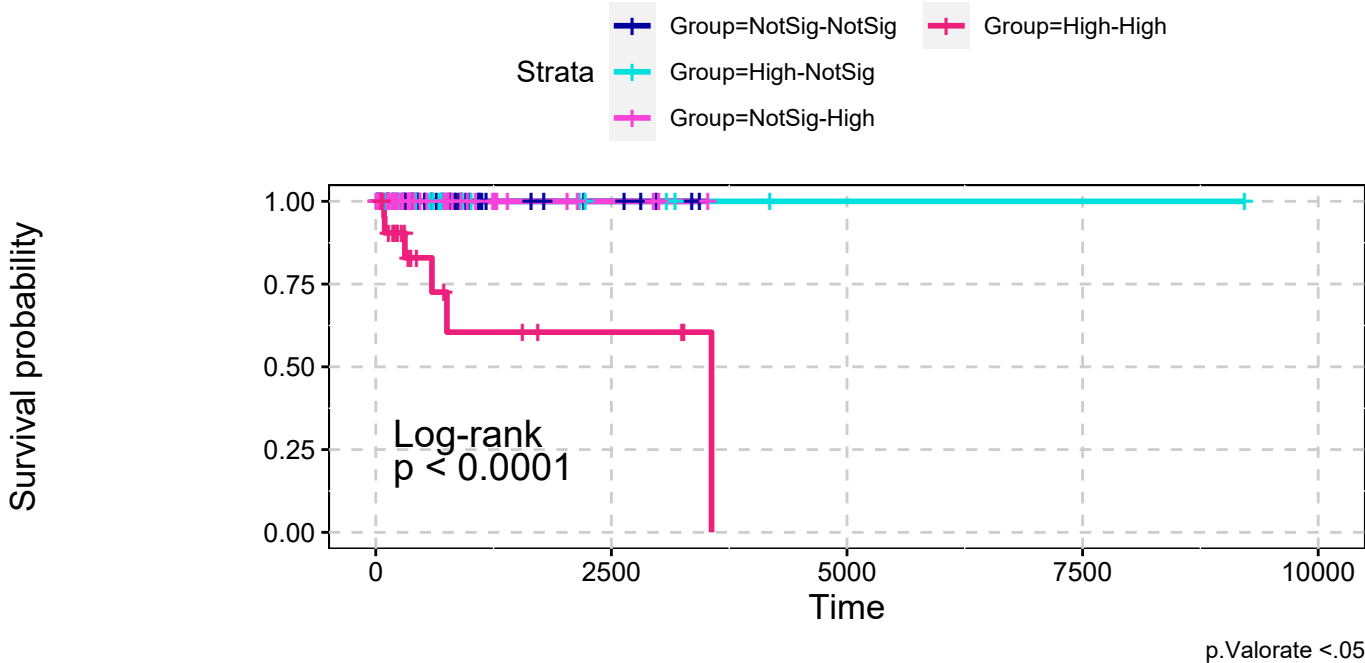
n= 162, number of events =6
Score(logrank) test = 0.06



PCPG
All Amplifications & All Deletions
combining signatures



PCPG
All Amplifications & All Deletions
combining signatures



explanatory	beta	HR	L95	U95	p
High-NotSig	0.72	2.06	0.00	Inf	1.00
NotSig-High	0.00	1.00	0.00	Inf	1.00
High-High	23.48	15710435369.28	0.00	Inf	1.00

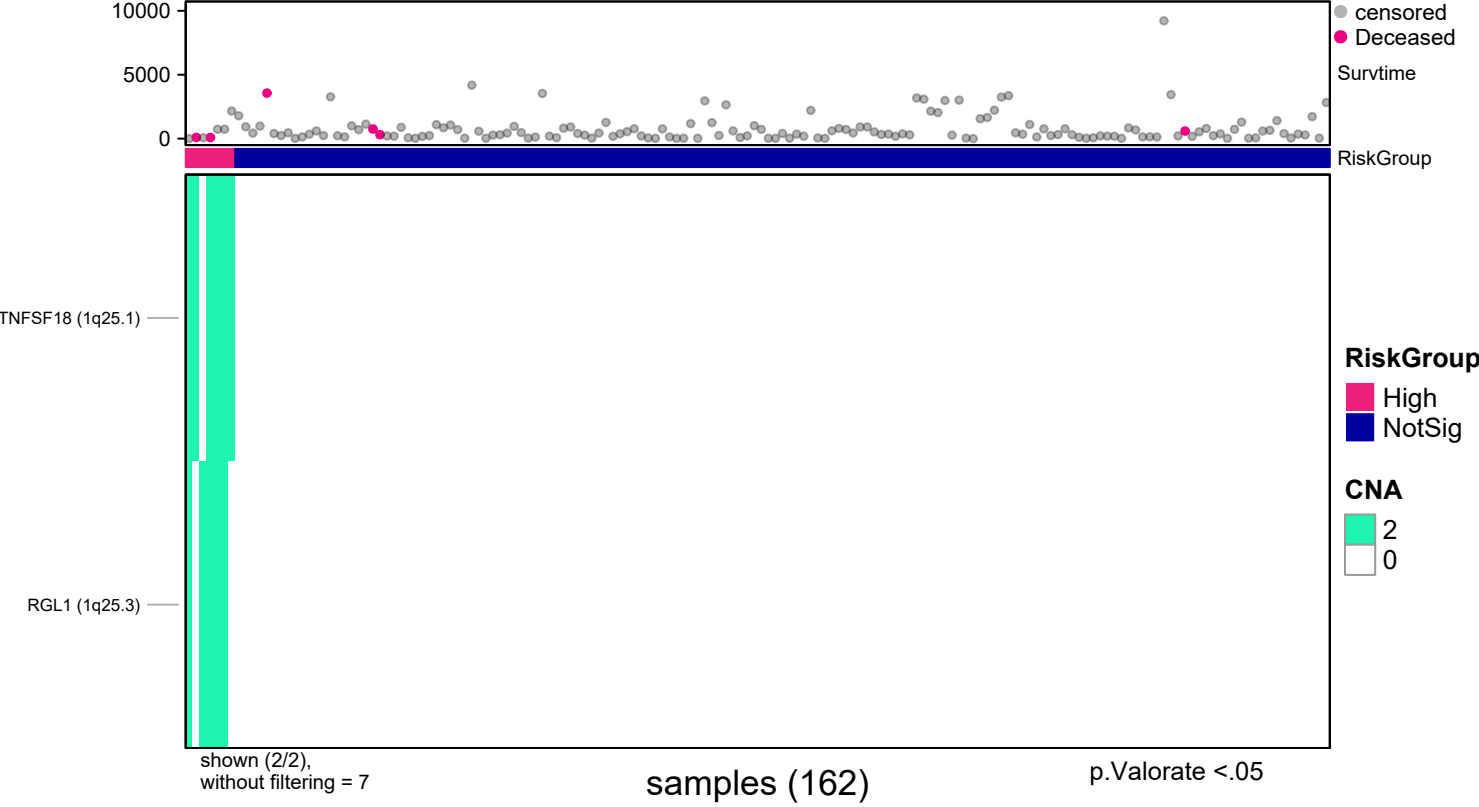
n= 162, number of events =6
Score(logrank) test = p <.0001

Number at risk

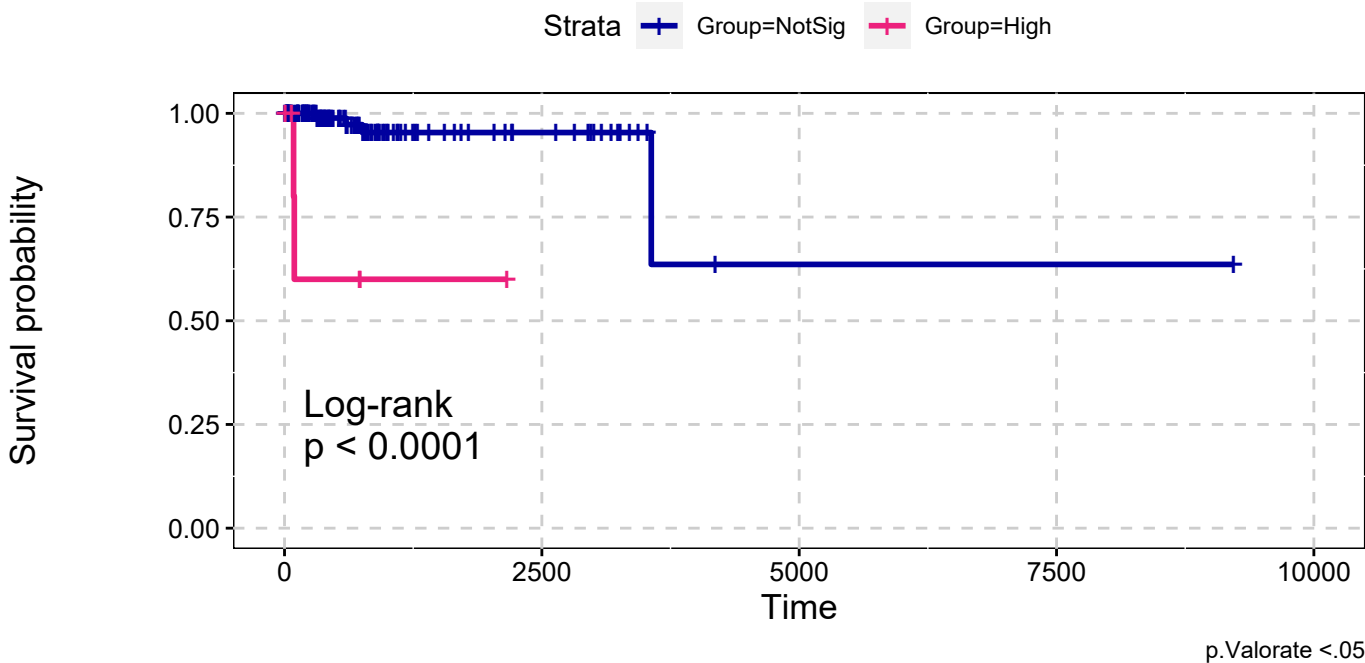
Group=NotSig-NotSig	64	5	0	0	0
Group=High-NotSig	29	4	1	1	0
Group=NotSig-High	46	3	0	0	0
Group=High-High	23	3	0	0	0

RiskGroup: Amp-Del, p.Valorate <.05

PCPG
Deep Amplifications
Single Data Signature



PCPG
Deep Amplifications
Single Data Signature



explanatory	beta	HR	L95	U95	p
High	2.99	19.91	3.27	121.38	0.00

n= 162, number of events =6
Score(logrank) test = p <.0001

