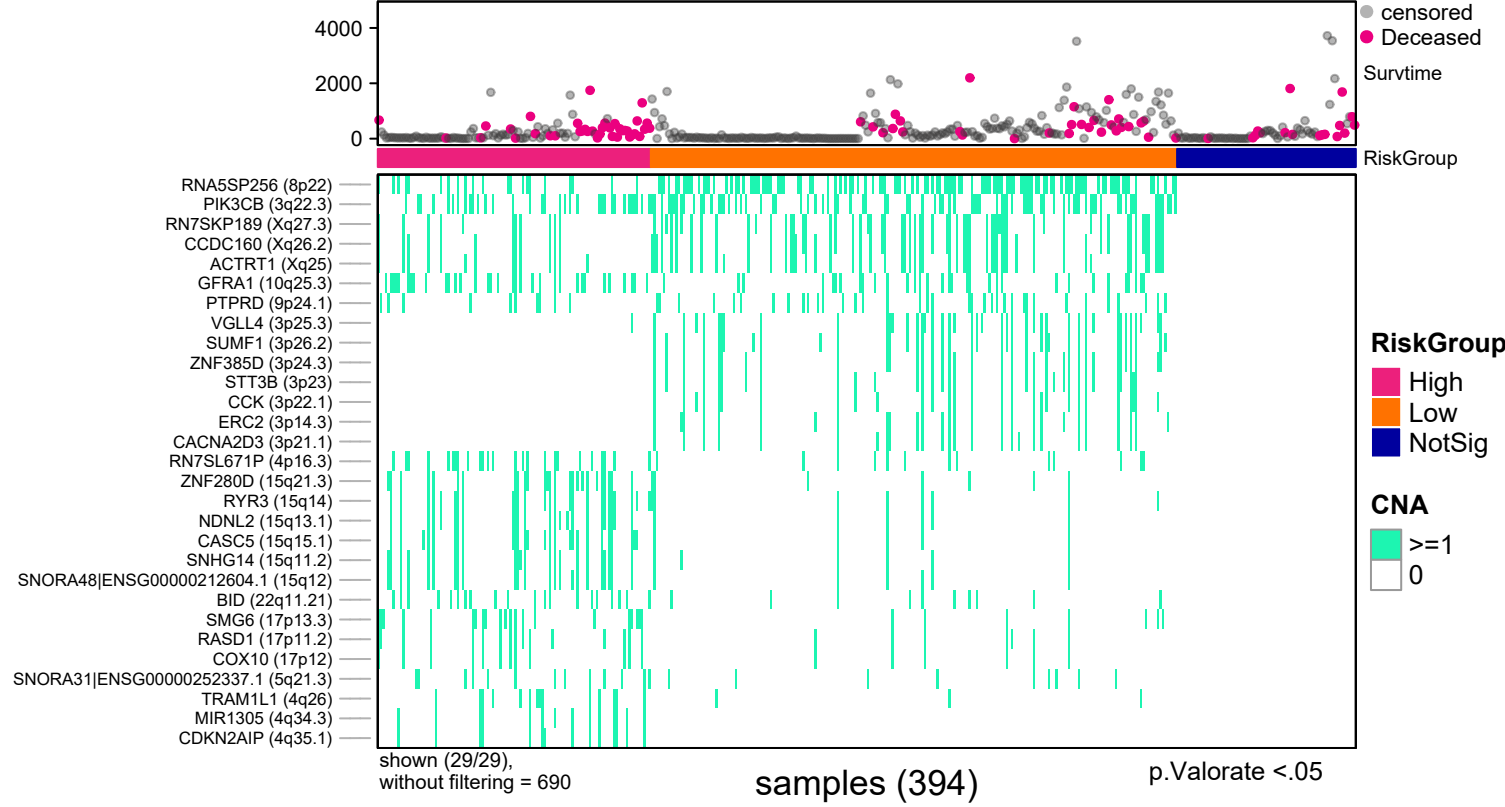
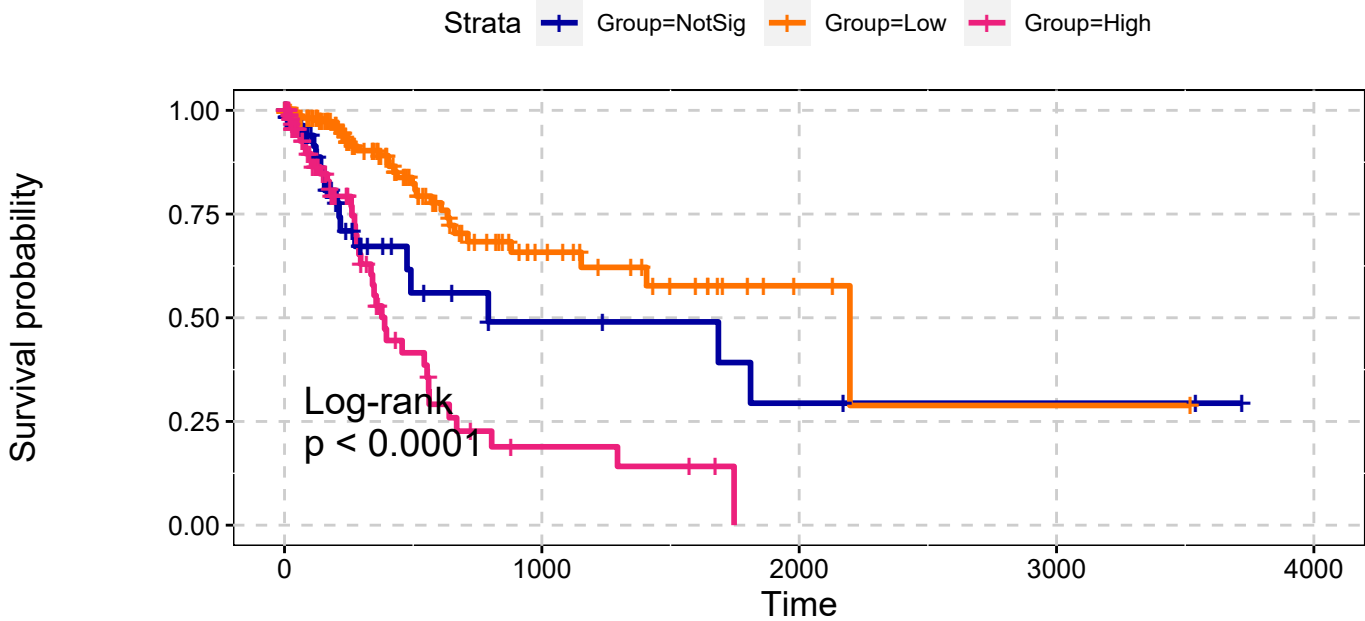


STAD
All Amplifications
Single Data Signature



STAD
All Amplifications
Single Data Signature

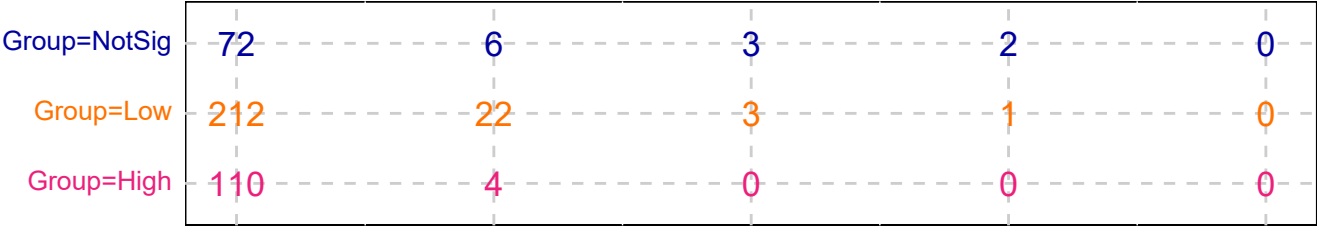


p.Valorate <.05

explanatory	beta	HR	L95	U95	p
Low	-0.81	0.45	0.24	0.82	0.01
High	0.61	1.85	1.02	3.33	0.04

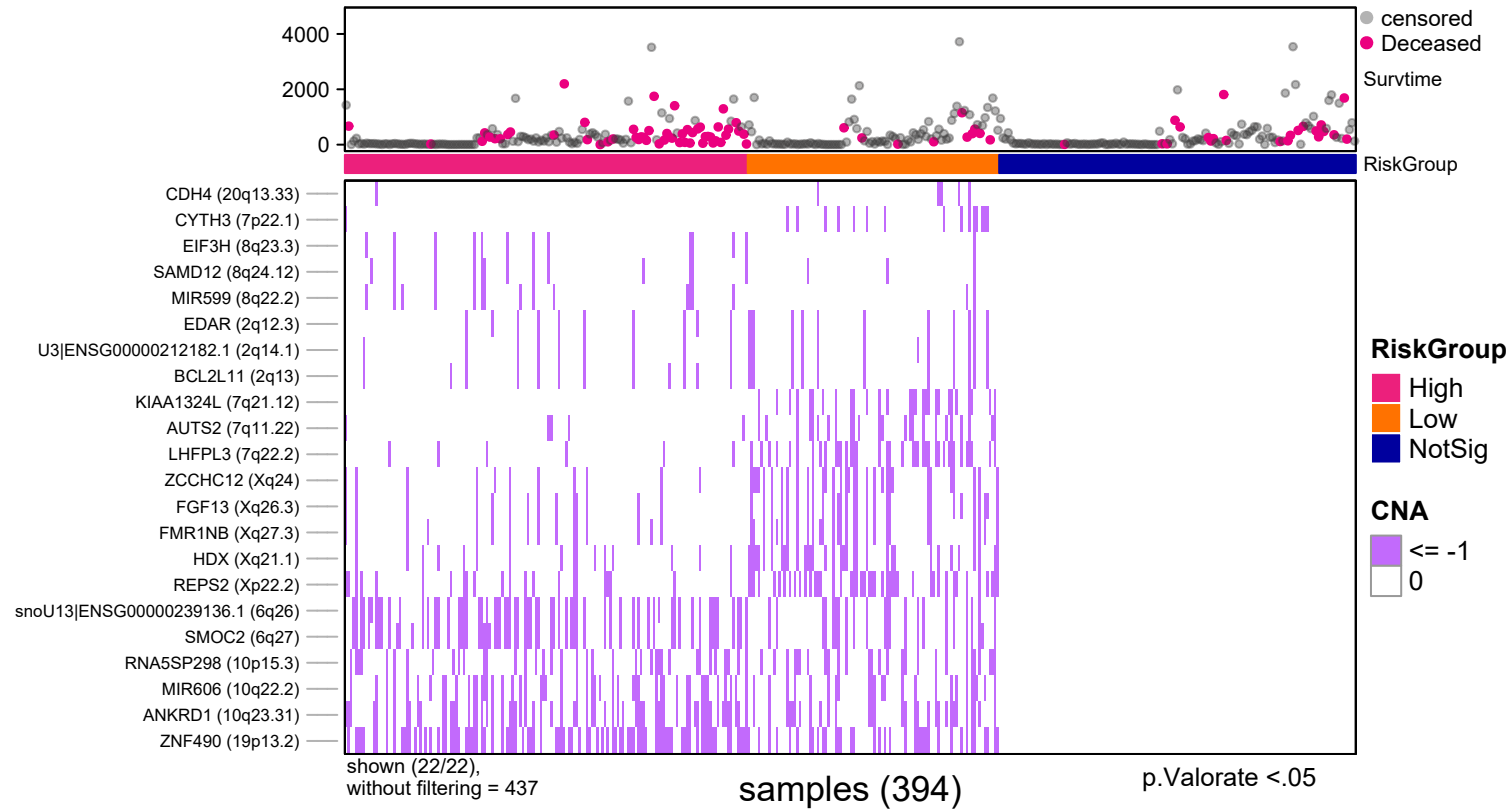
n= 394, number of events =84
Score(logrank) test = $p < .0001$

Number at risk

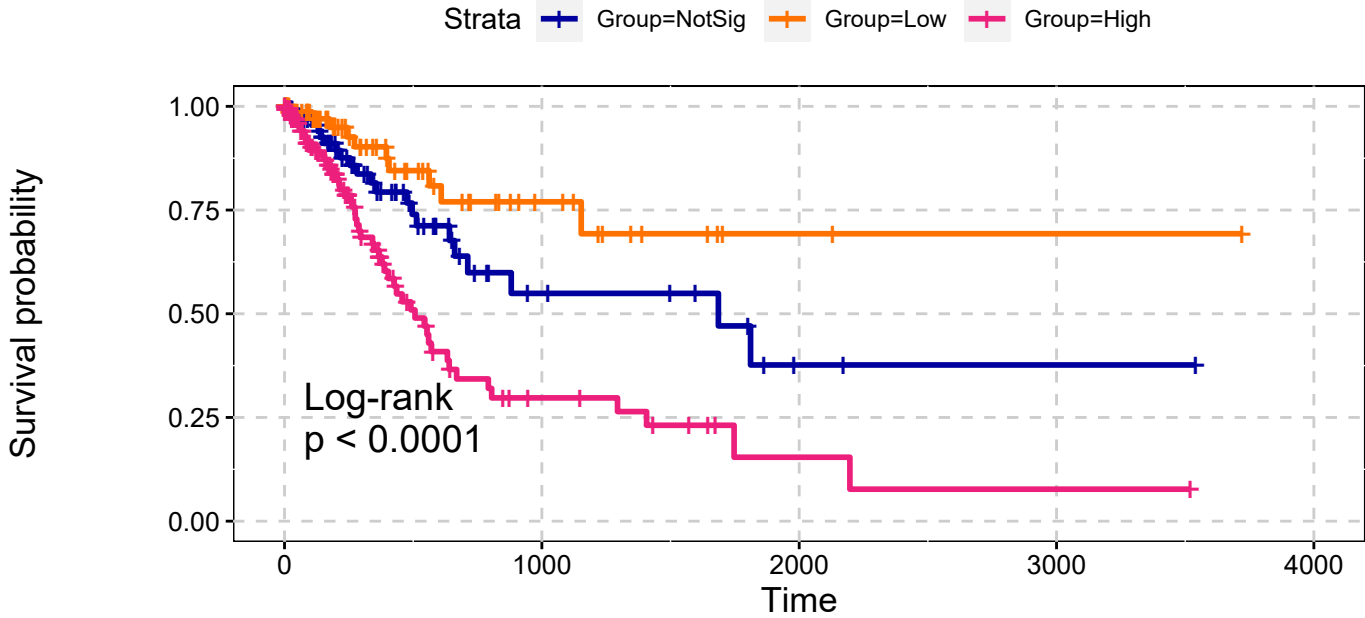


p.Valorate <.05

STAD
All Deletions
Single Data Signature



STAD
All Deletions
Single Data Signature

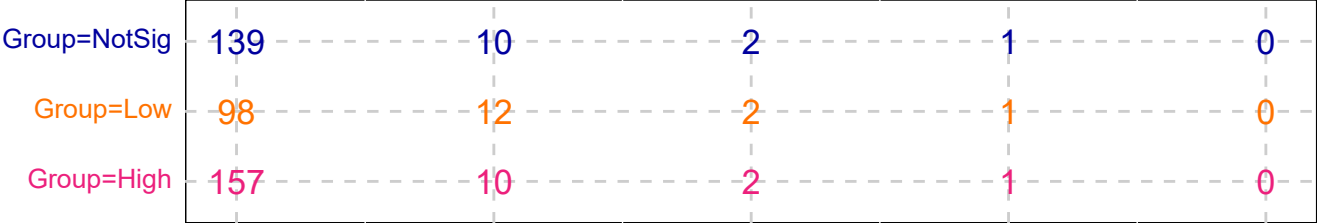


p.Valorate <.05

explanatory	beta	HR	L95	U95	p
Low	-0.64	0.52	0.25	1.11	0.09
High	0.77	2.16	1.31	3.57	0.00

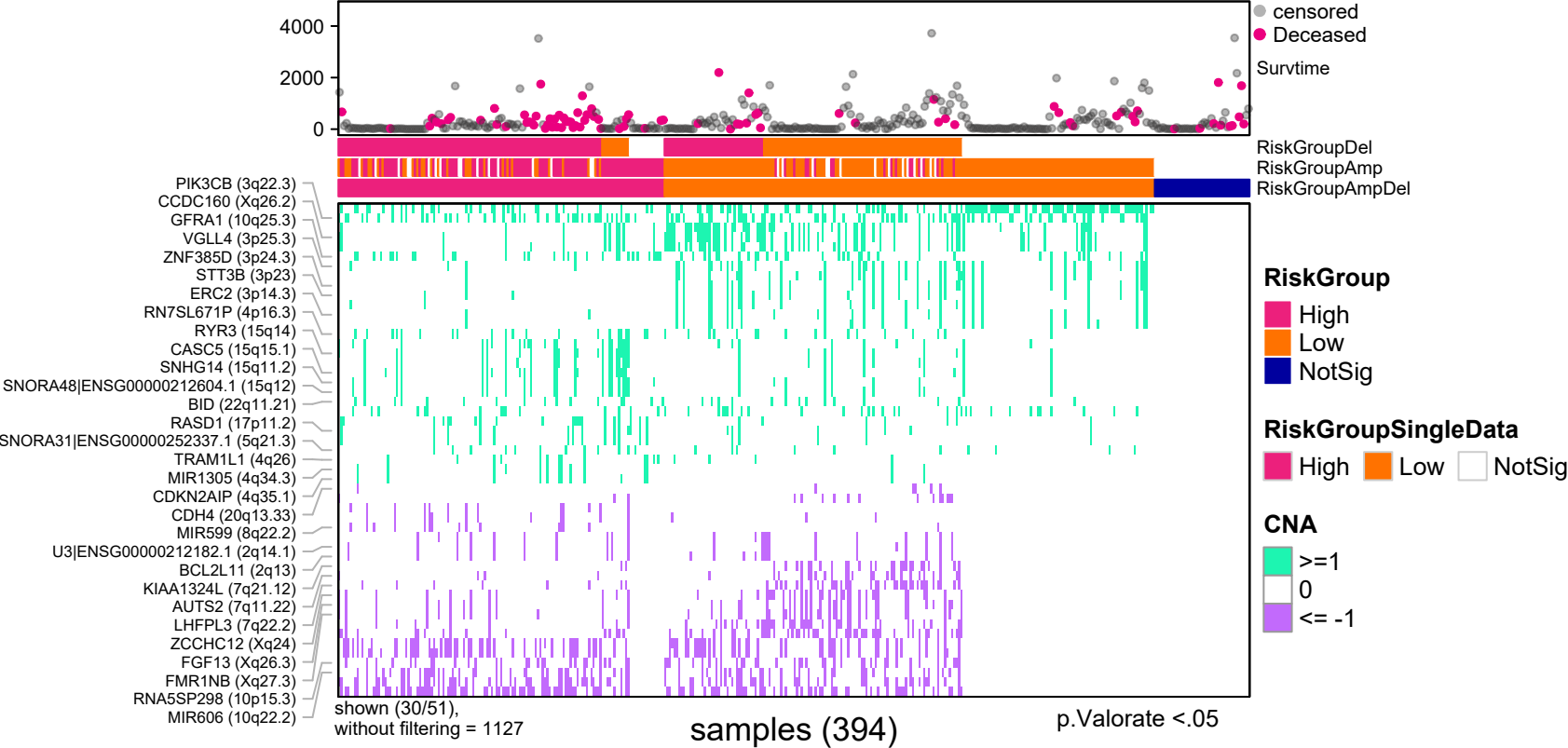
n= 394, number of events =84
Score(logrank) test = p <.0001

Number at risk



p.Valorate <.05

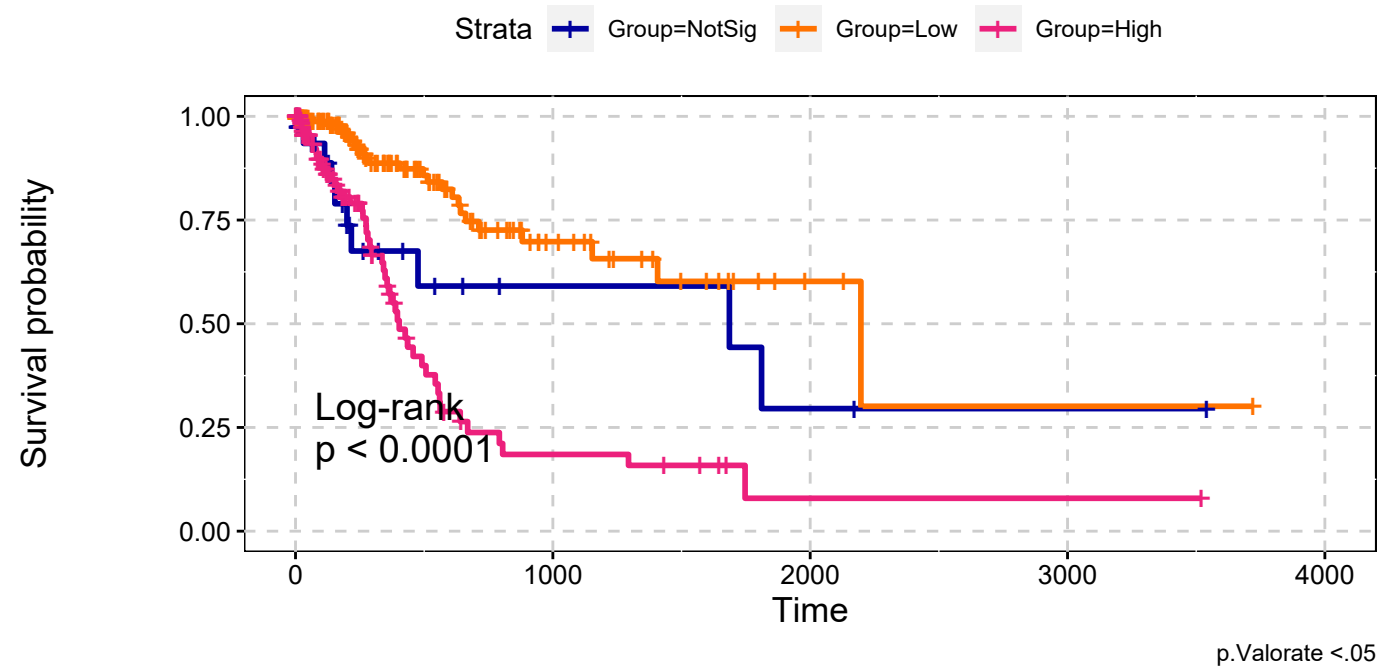
STAD
All Amplifications & All Deletions
Max Sum Significance Signatures



STAD

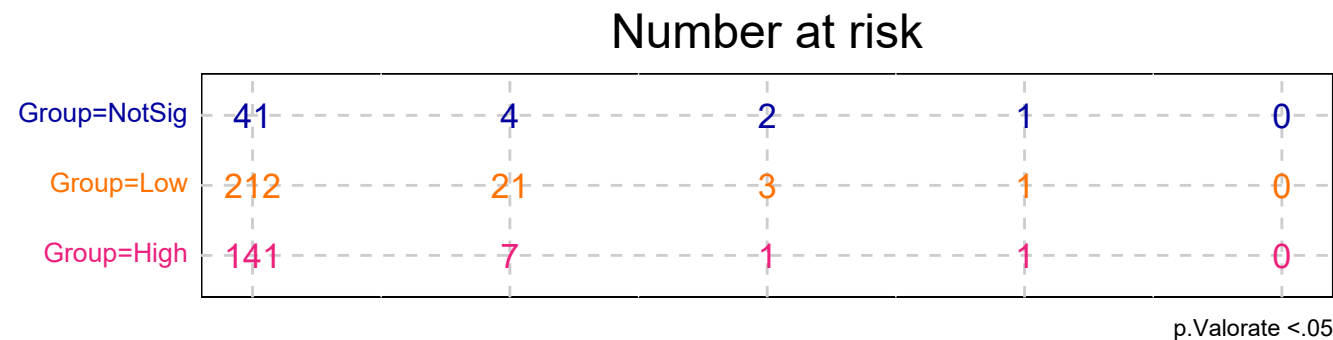
All Amplifications & All Deletions

Max Sum Significance Signatures

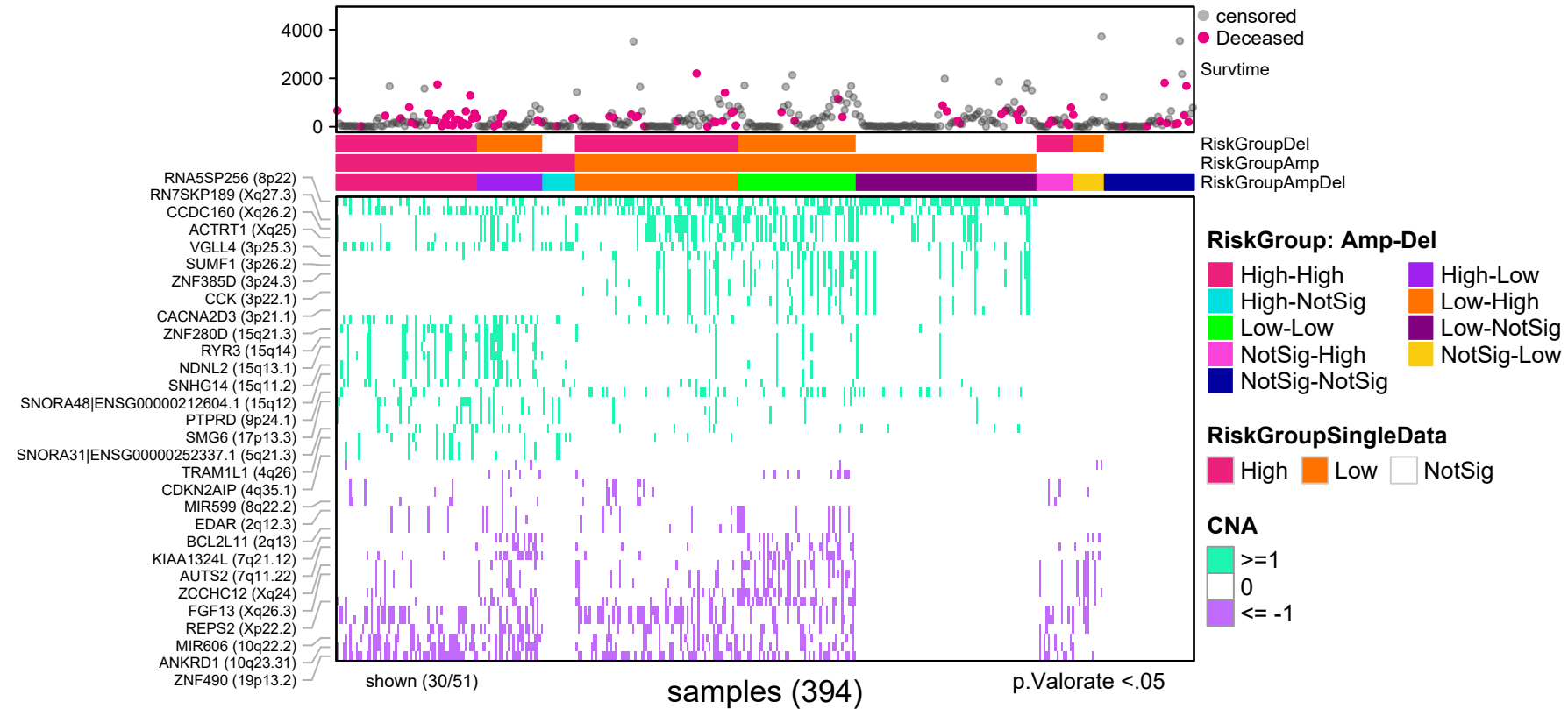


explanatory	beta	HR	L95	U95	p
Low	-0.90	0.41	0.19	0.86	0.02
High	0.58	1.79	0.90	3.58	0.10

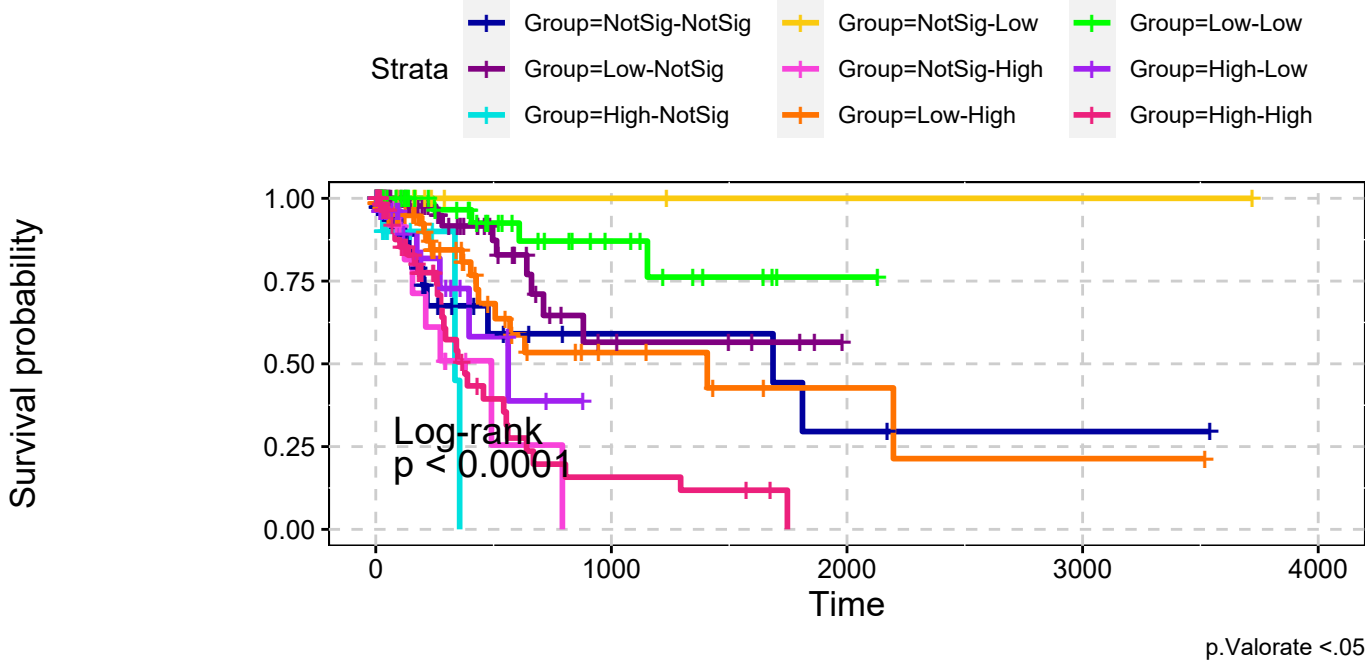
n= 394, number of events =84
Score(logrank) test = p <.0001



STAD
All Amplifications & All Deletions
combining signatures



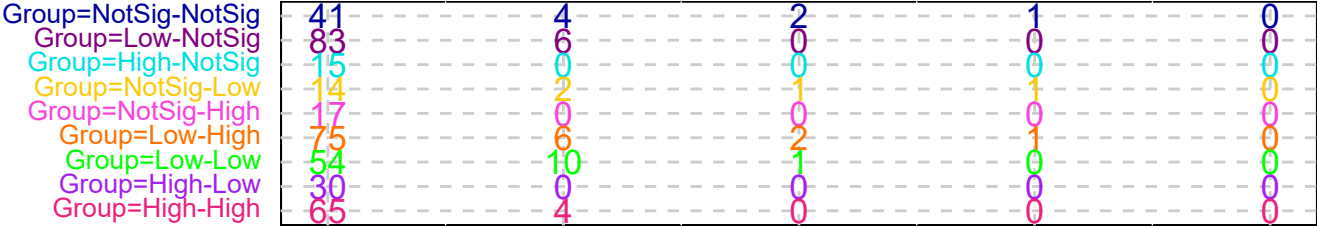
STAD
All Amplifications & All Deletions
combining signatures



explanatory	beta	HR	L95	U95	p
Low-NotSig	-0.88	0.41	0.17	1.03	0.06
High-NotSig	1.15	3.14	0.83	11.85	0.09
NotSig-Low	-17.55	0.00	0.00	Inf	1.00
NotSig-High	0.97	2.63	0.98	7.09	0.06
Low-High	-0.18	0.83	0.38	1.85	0.66
Low-Low	-1.63	0.20	0.06	0.63	0.01
High-Low	0.26	1.30	0.46	3.66	0.62
High-High	0.77	2.16	1.03	4.53	0.04

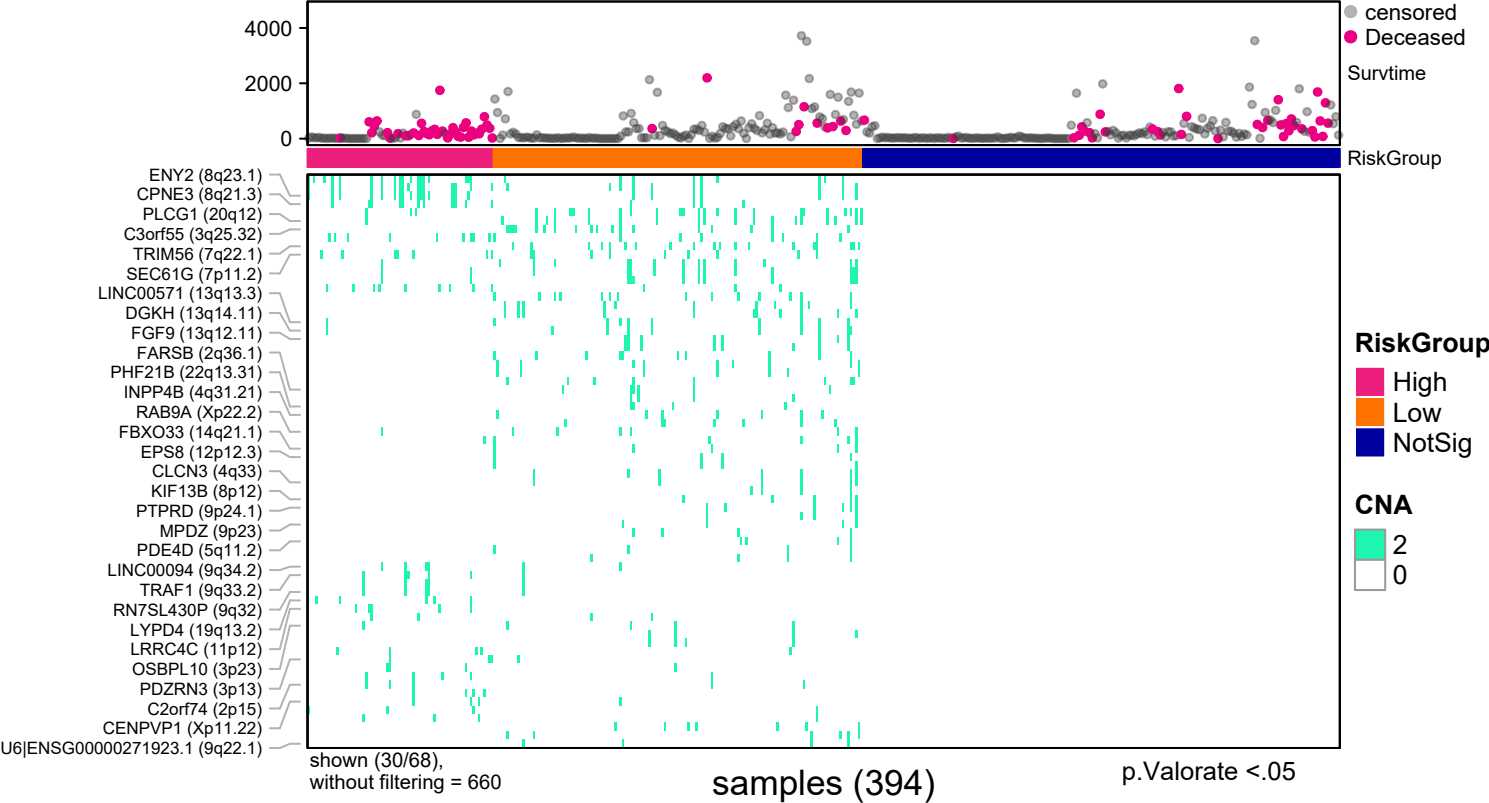
n= 394, number of events =84
Score(logrank) test = p <.0001

Number at risk

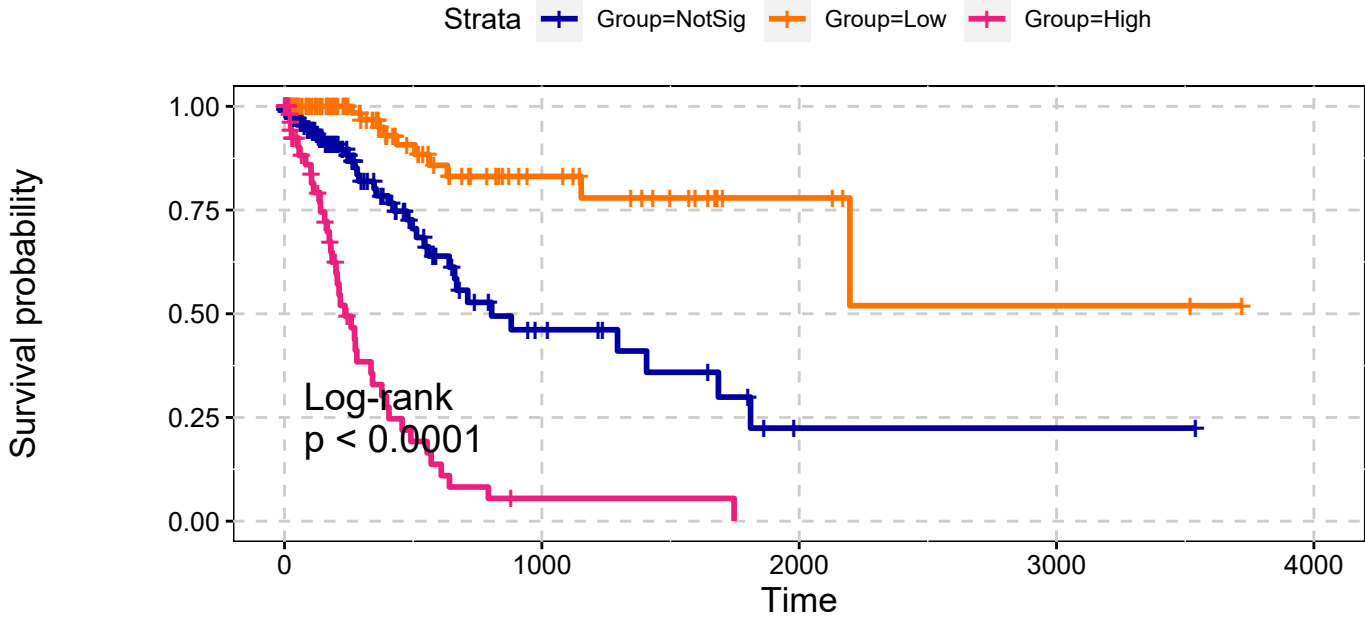


RiskGroup: Amp-Del, p.Valorate < .05

STAD
Deep Amplifications
Single Data Signature



STAD
Deep Amplifications
Single Data Signature

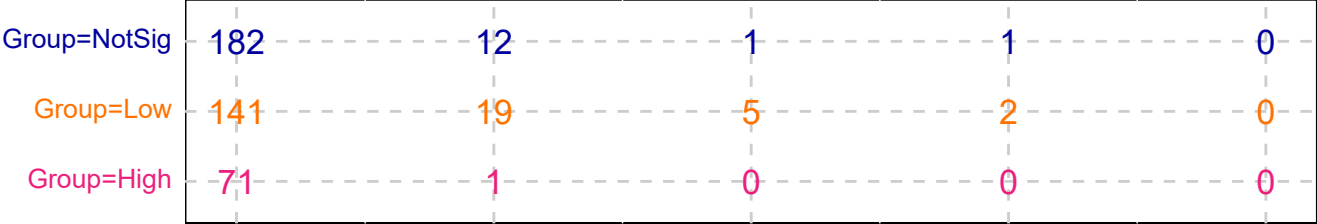


explanatory	beta	HR	L95	U95	p
Low	-1.40	0.25	0.12	0.50	0.00
High	1.45	4.26	2.67	6.79	0.00

n= 394, number of events =84
Score(logrank) test = p <.0001

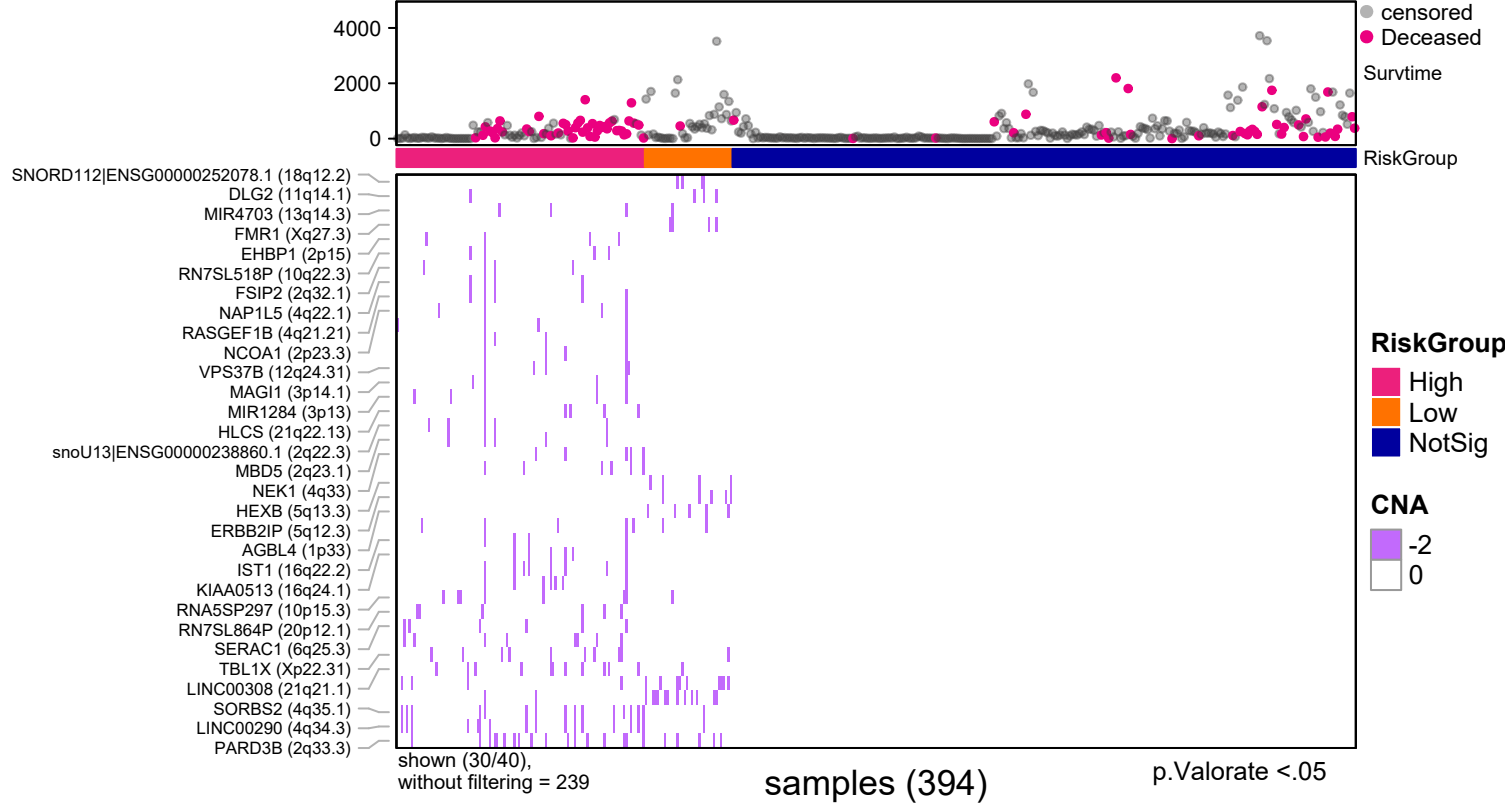
p.Valorate <.05

Number at risk

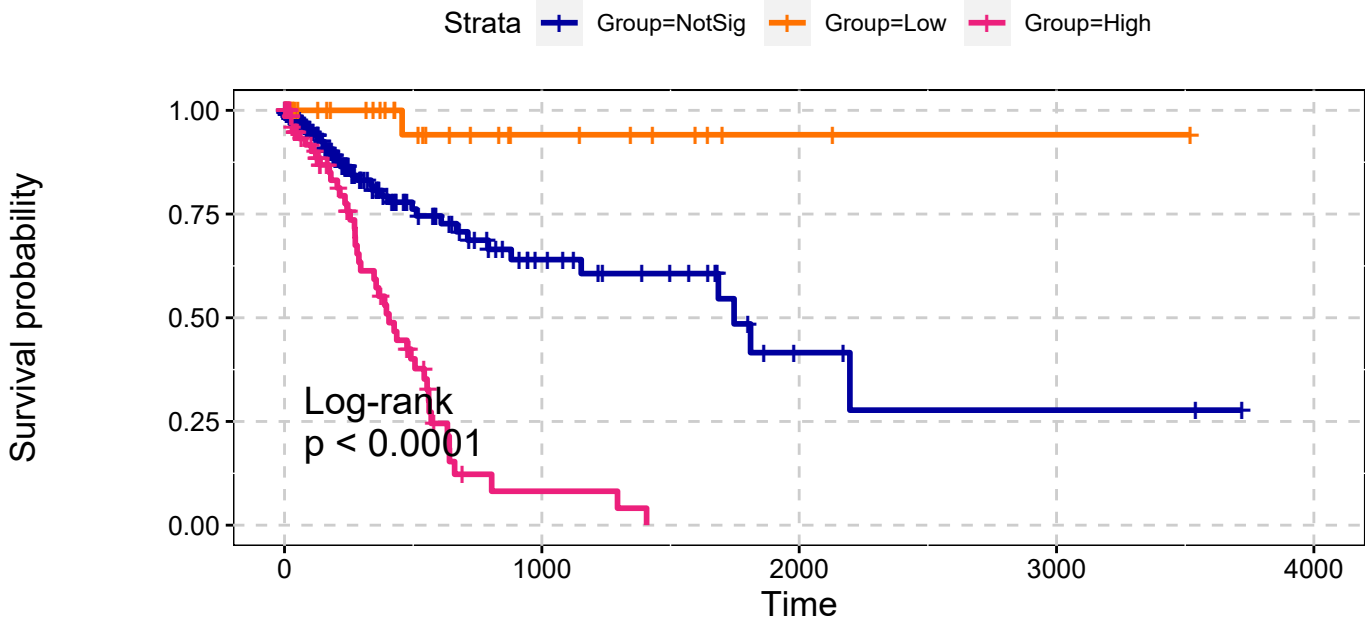


p.Valorate <.05

STAD
Deep Deletions
Single Data Signature



STAD
Deep Deletions
Single Data Signature



explanatory	beta	HR	L95	U95	p
Low	-2.38	0.09	0.01	0.67	0.02
High	1.34	3.84	2.43	6.06	0.00

n= 394, number of events =84
Score(logrank) test = $p < .0001$

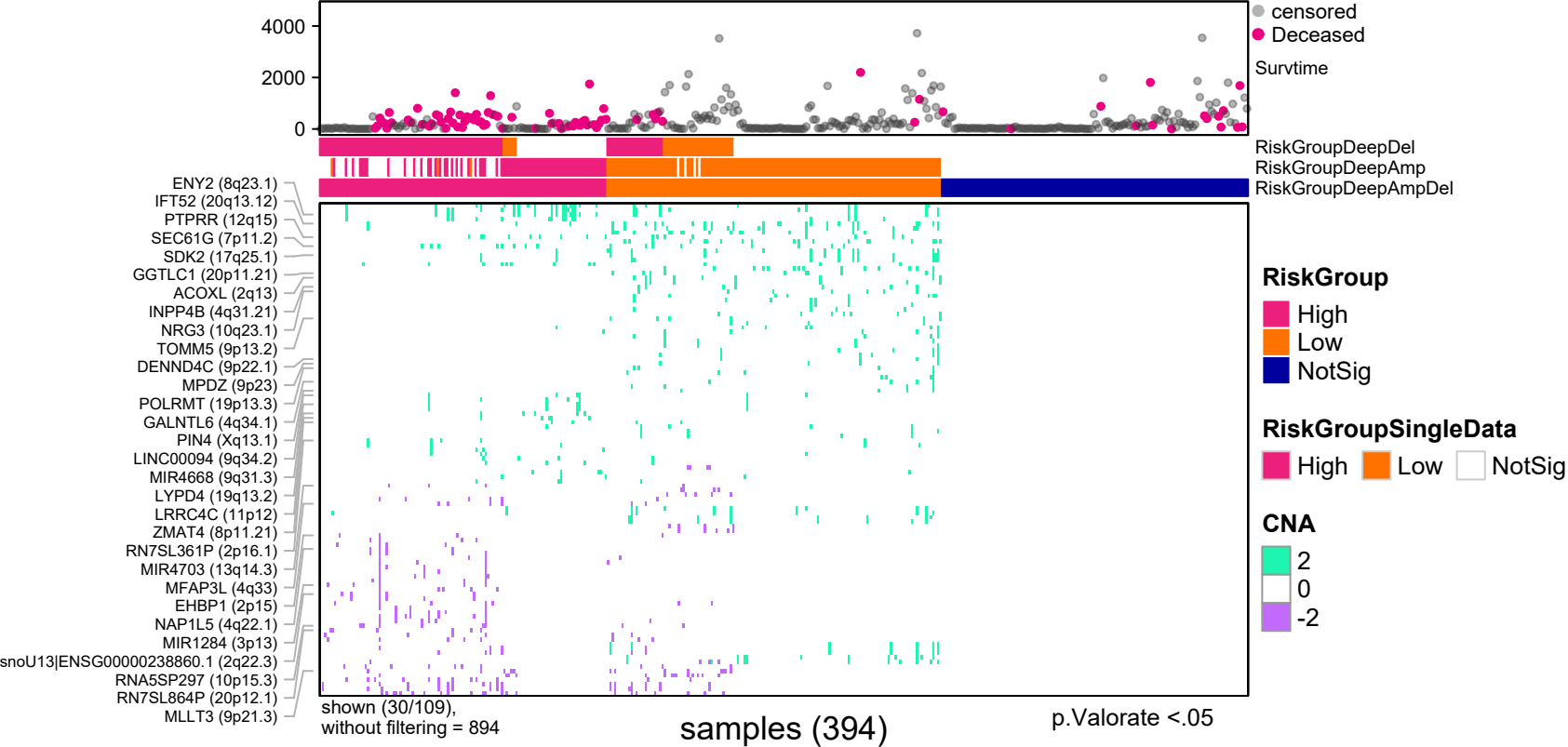
p.Valorate <.05

Number at risk

Group=NotSig	256	22	4	2	0
Group=Low	36	8	2	1	0
Group=High	102	2	0	0	0

p.Valorate <.05

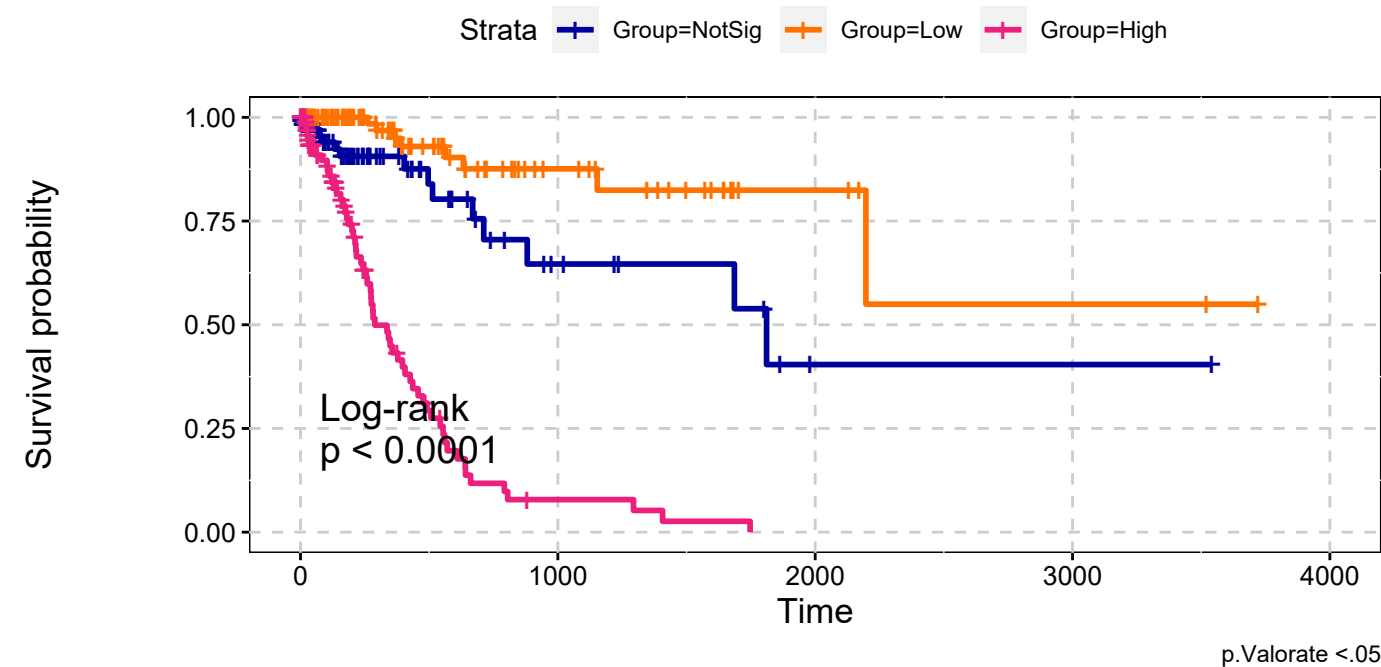
STAD
Deep Amplifications & Deep Deletions
Max Sum Significance Signatures



STAD

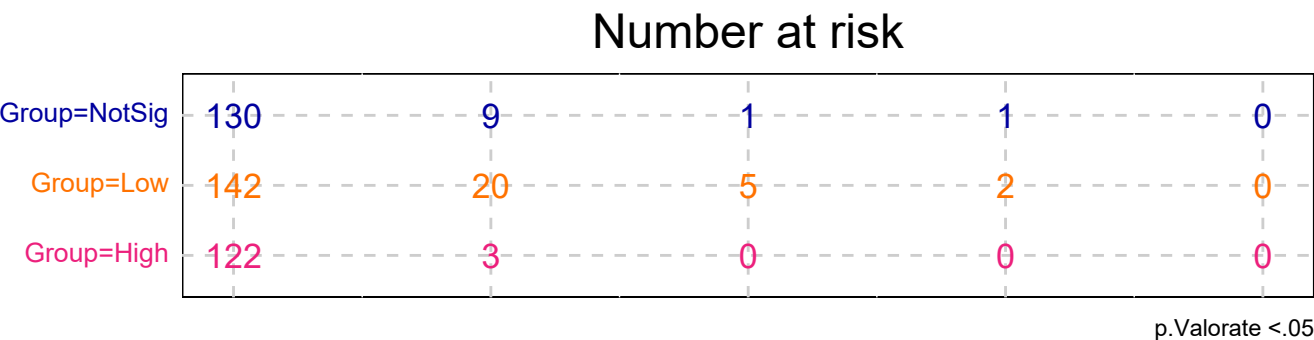
Deep Amplifications & Deep Deletions

Max Sum Significance Signatures

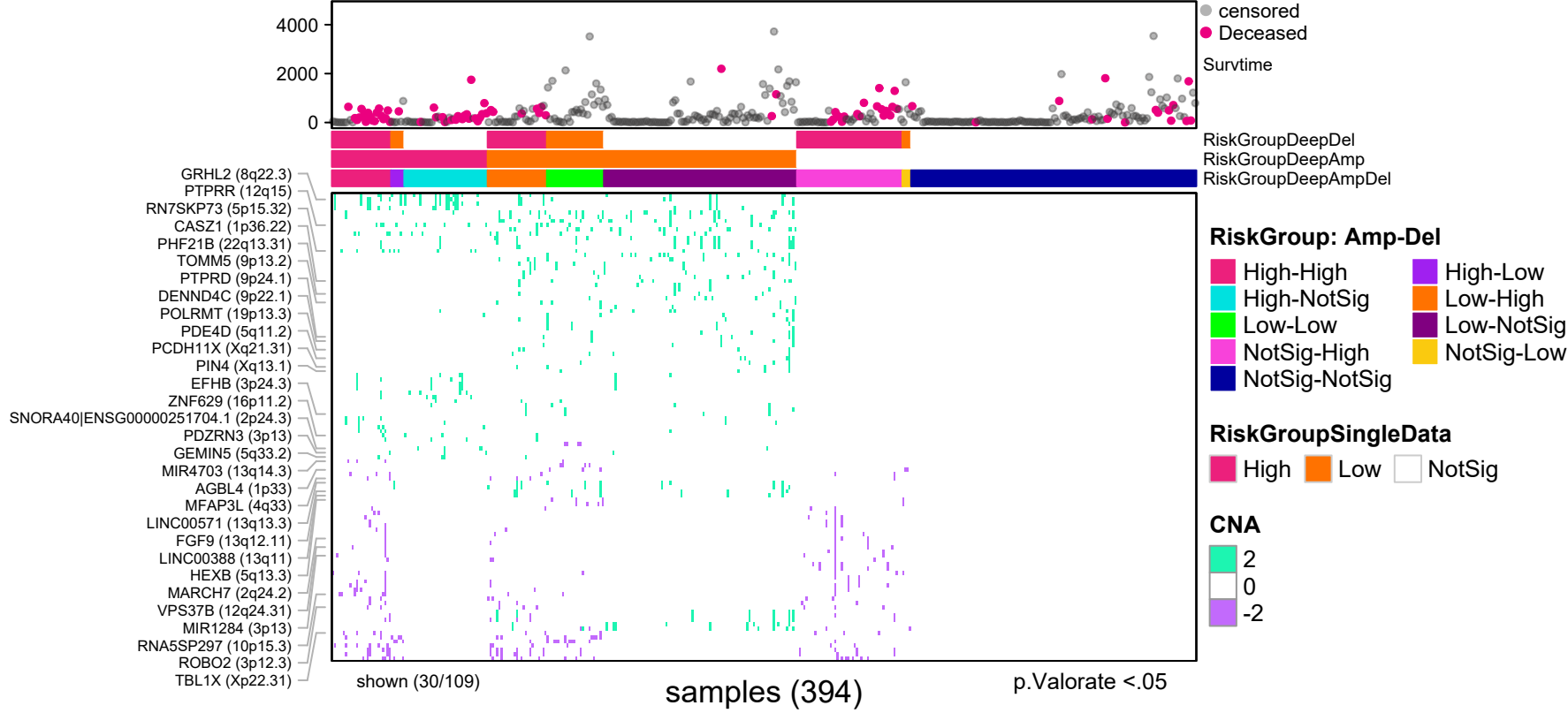


explanatory	beta	HR	L95	U95	p
Low	-1.13	0.32	0.14	0.76	0.01
High	1.78	5.94	3.30	10.67	0.00

n= 394, number of events =84
Score(logrank) test = p <.0001

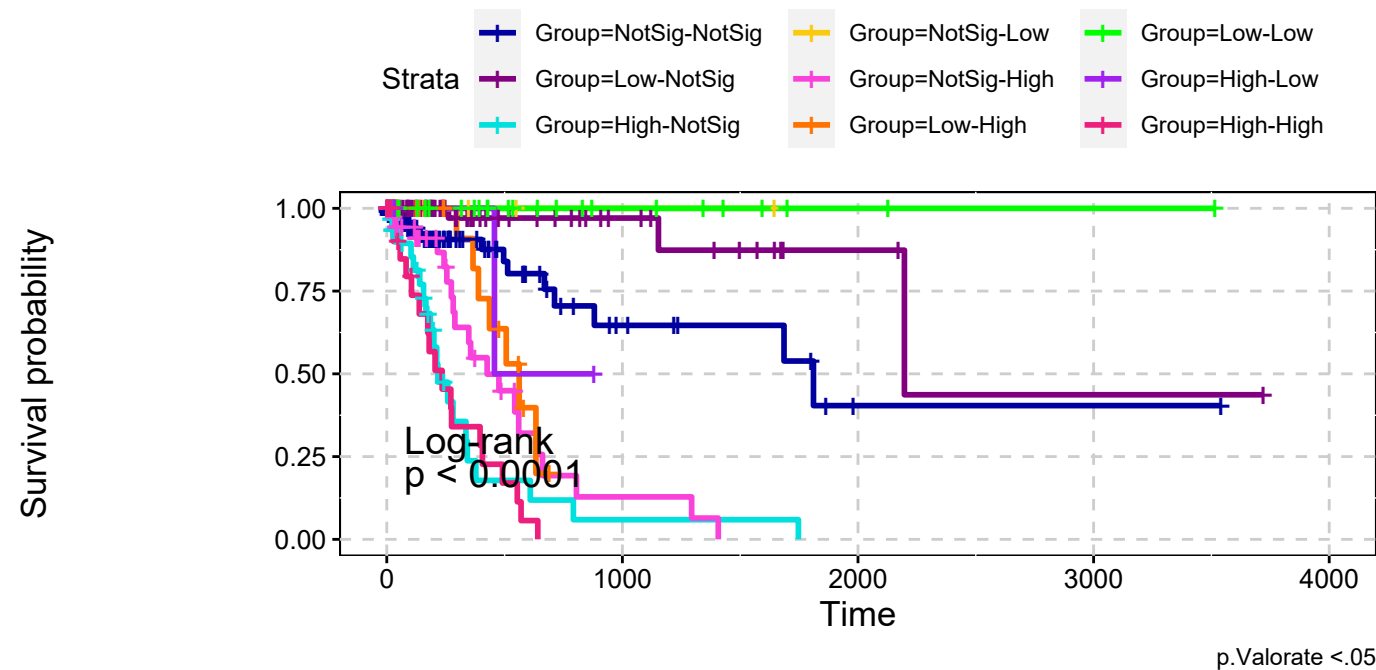


STAD
Deep Amplifications & Deep Deletions
combining signatures



STAD

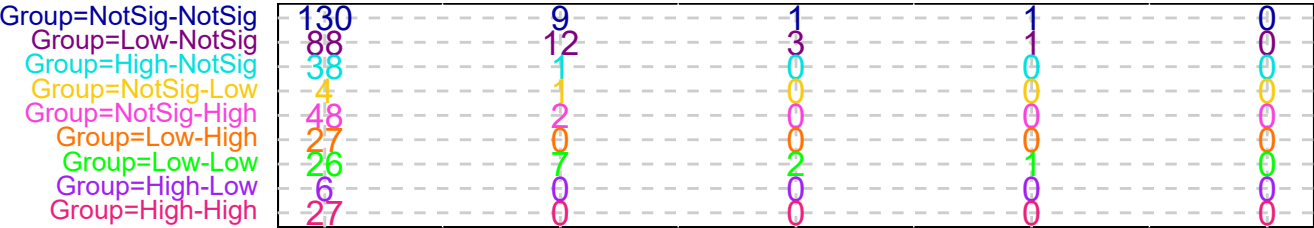
Deep Amplifications & Deep Deletions combining signatures



explanatory	beta	HR	L95	U95	p
Low-NotSig	-1.57	0.21	0.06	0.72	0.01
High-NotSig	2.07	7.95	3.97	15.91	0.00
NotSig-Low	-18.37	0.00	0.00	Inf	1.00
NotSig-High	1.49	4.45	2.22	8.93	0.00
Low-High	1.03	2.80	1.11	7.09	0.03
Low-Low	-18.26	0.00	0.00	Inf	1.00
High-Low	0.52	1.67	0.22	12.82	0.62
High-High	2.33	10.26	4.96	21.24	0.00

n= 394, number of events =84
Score(logrank) test = $p < .0001$

Number at risk



RiskGroup: Amp-Del, p.Valorate <.05