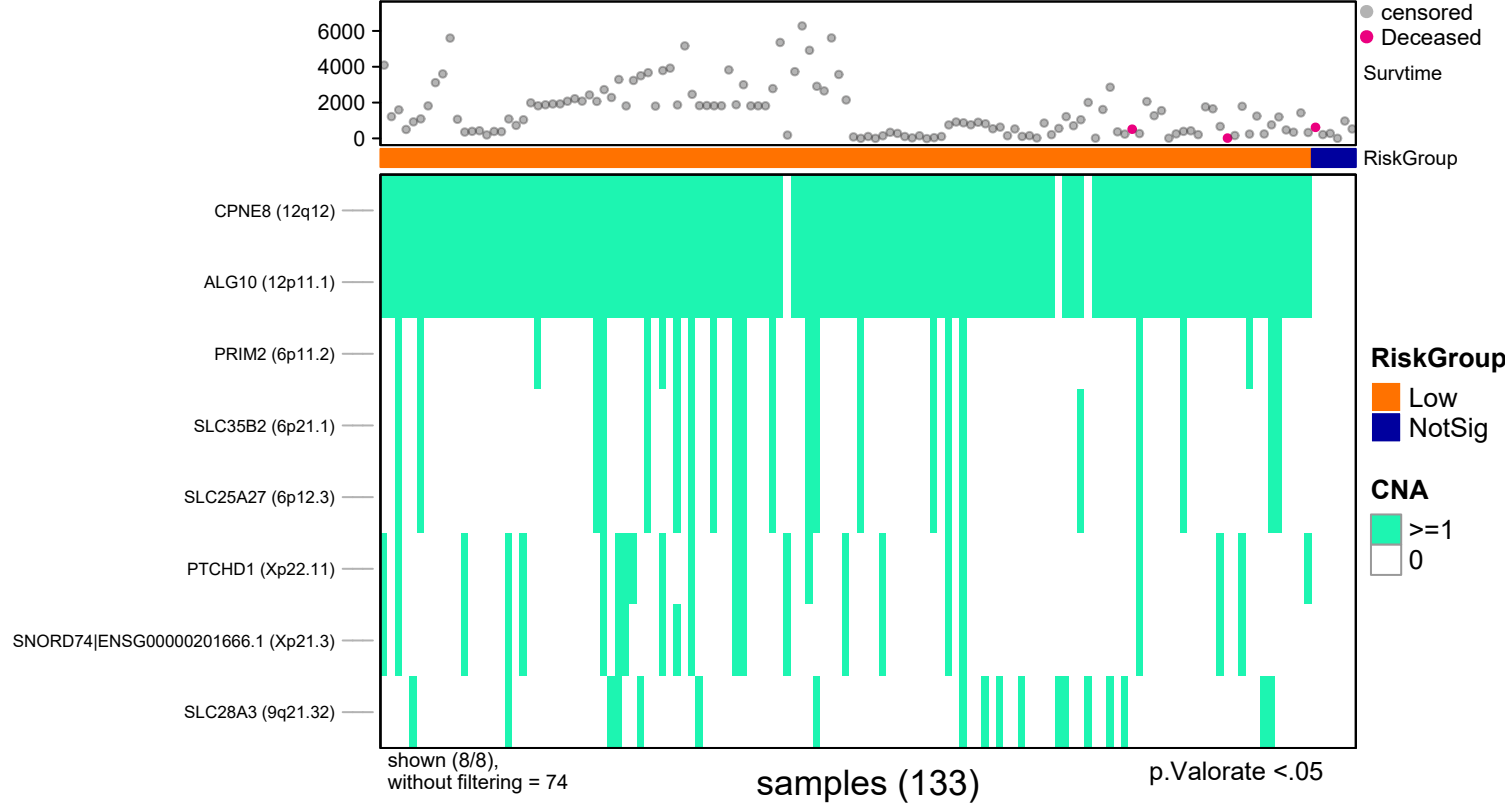
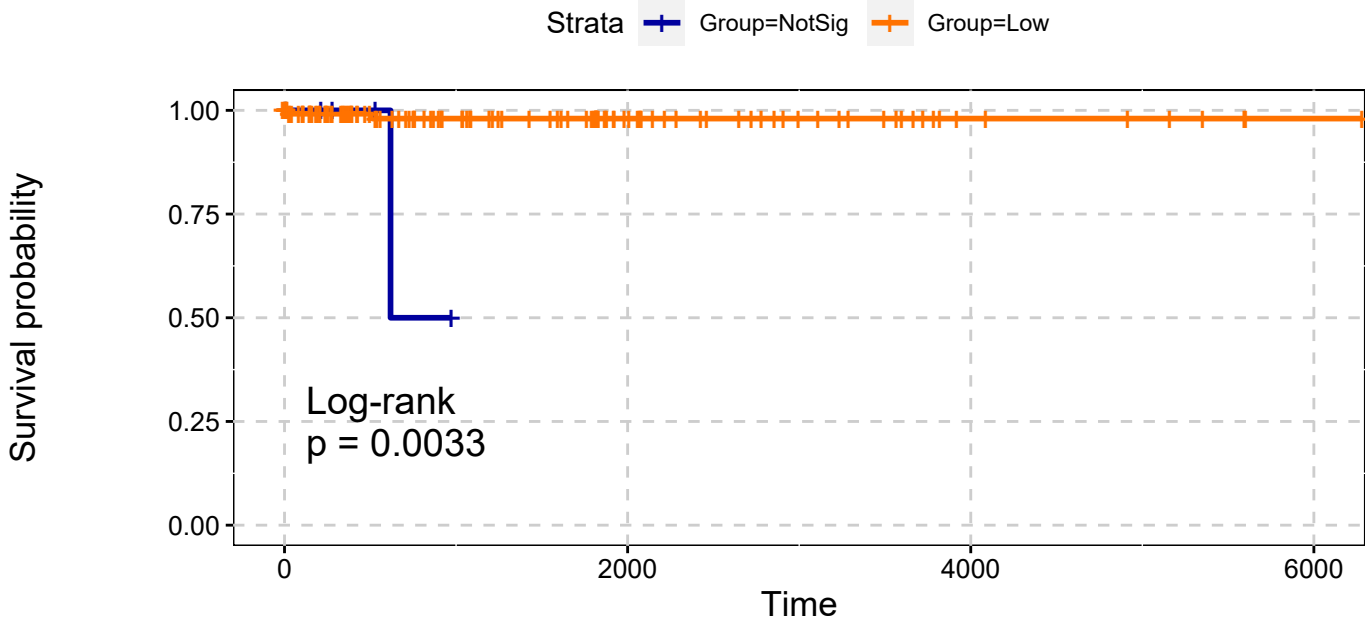


TGCT  
All Amplifications  
Single Data Signature



TGCT  
All Amplifications  
Single Data Signature

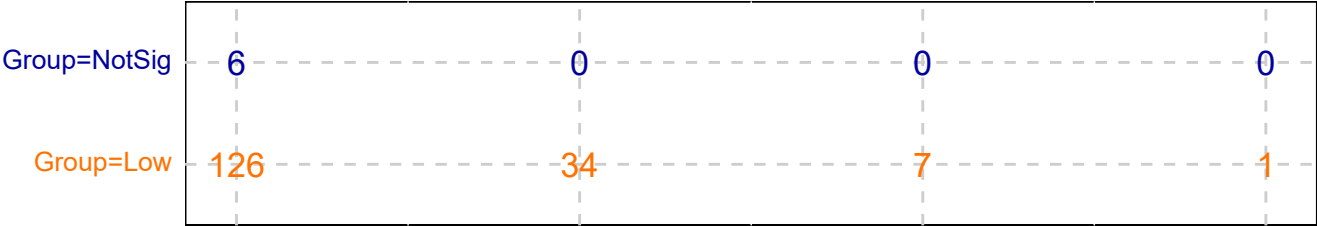


p.Valorate <.05

explanatory	beta	HR	L95	U95	p
Low	-2.71	0.07	0.01	0.74	0.03

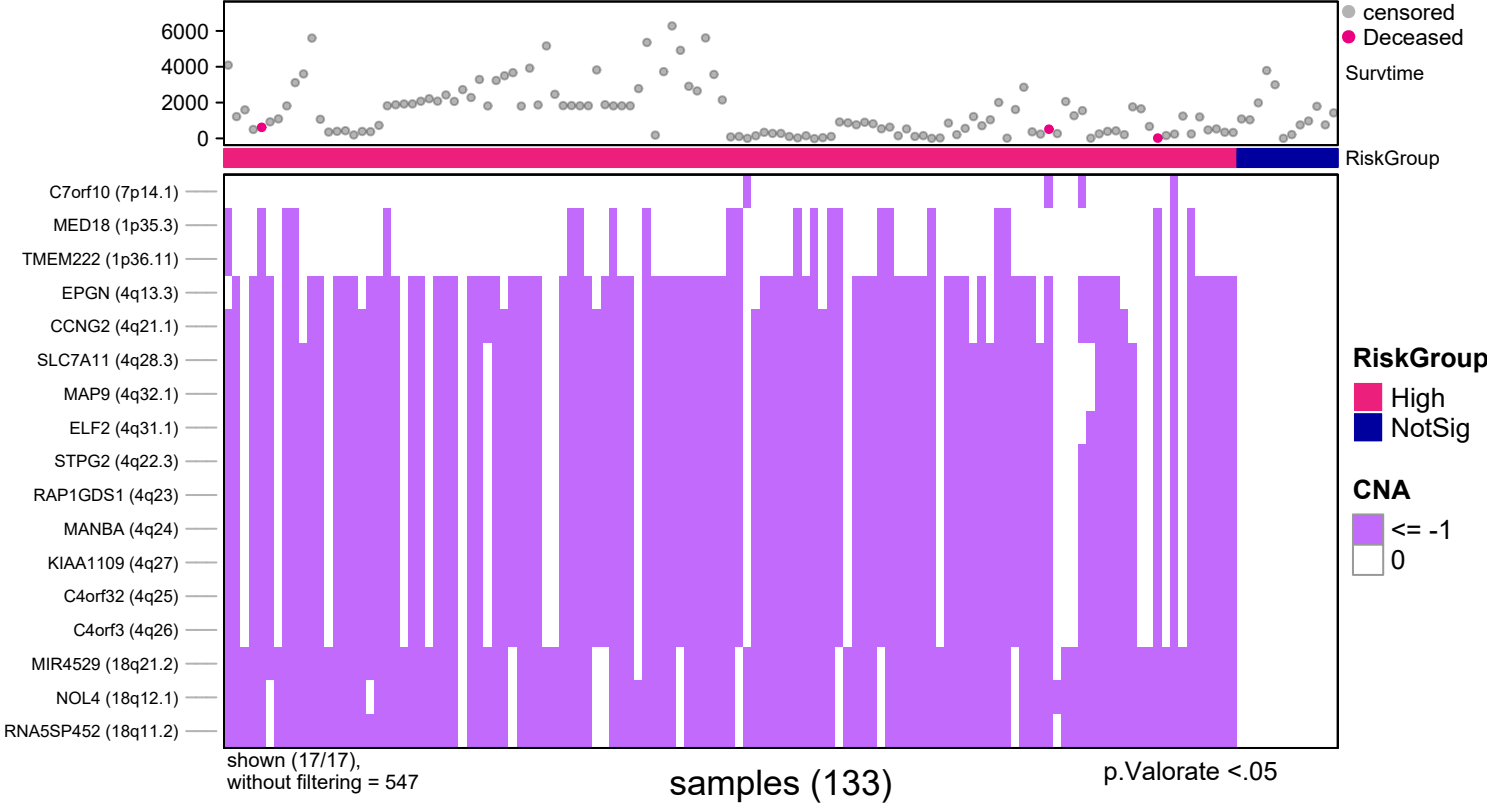
n= 133, number of events =3  
Score(logrank) test = 0.003

Number at risk

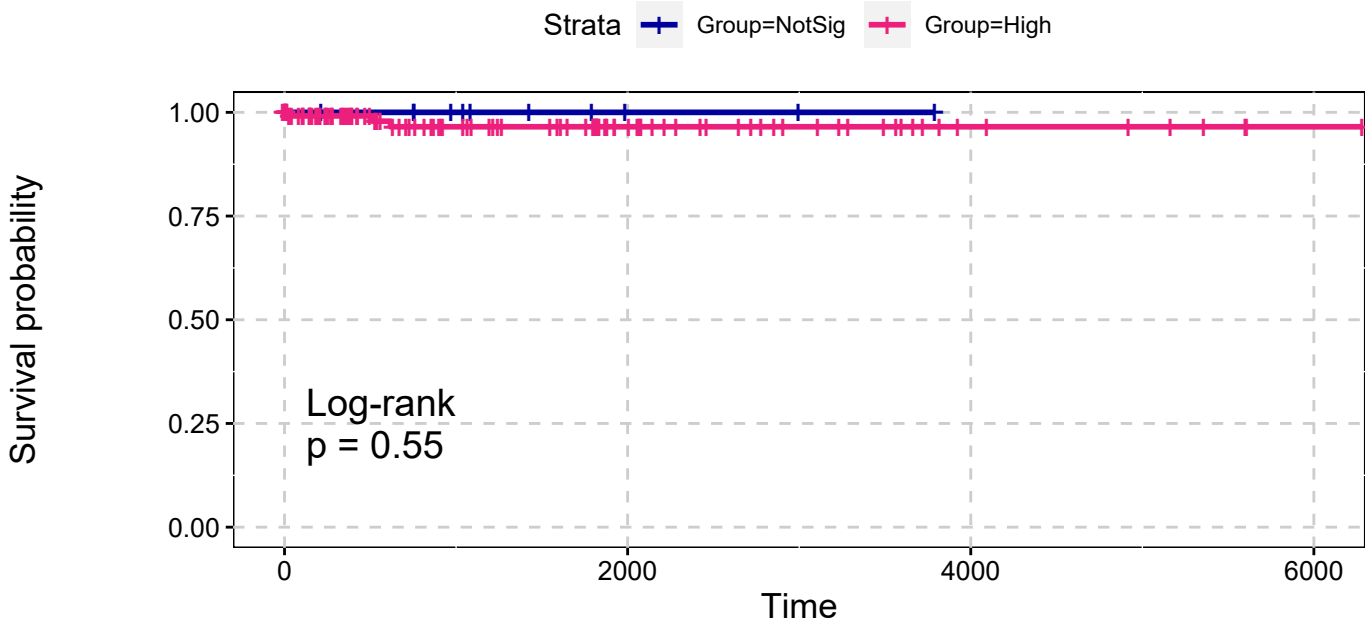


p.Valorate <.05

TGCT  
All Deletions  
Single Data Signature



TGCT  
All Deletions  
Single Data Signature

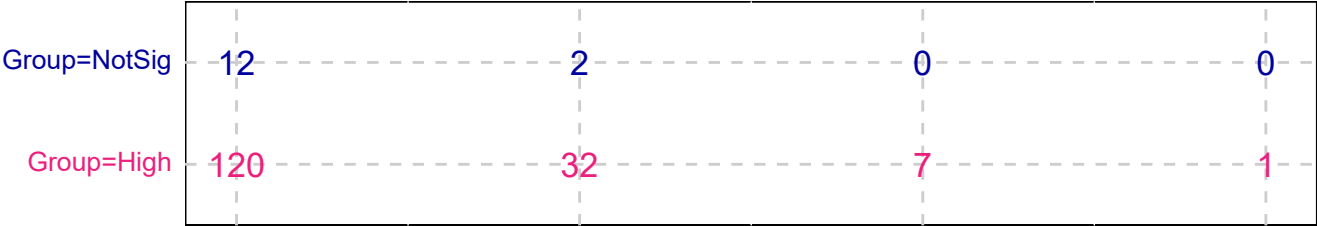


p.Valorate <.05

explanatory	beta	HR	L95	U95	p
High	18.18	78950482.04	0.00	Inf	1.00

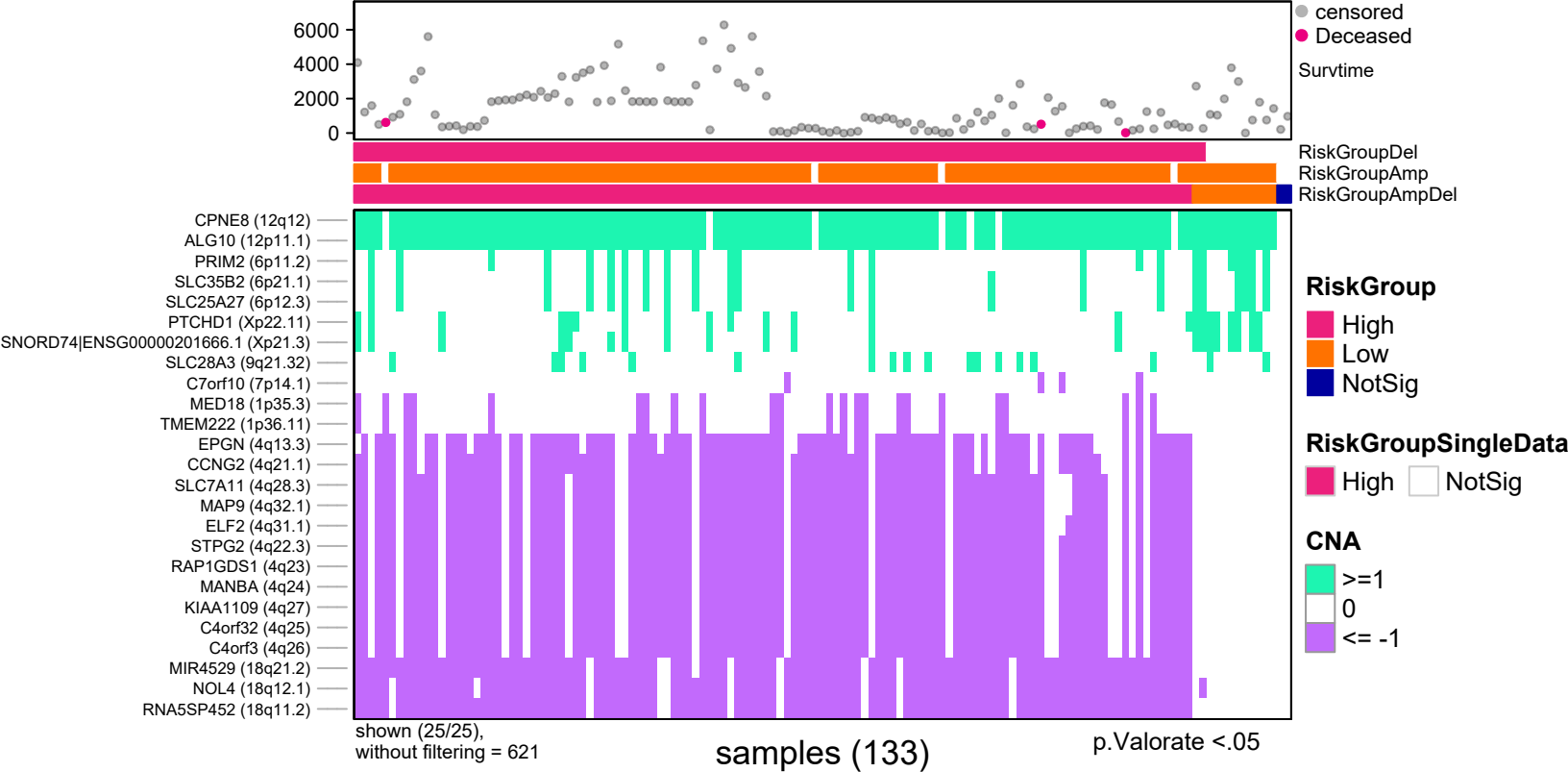
n= 133, number of events =3  
Score(logrank) test = 0.549

Number at risk

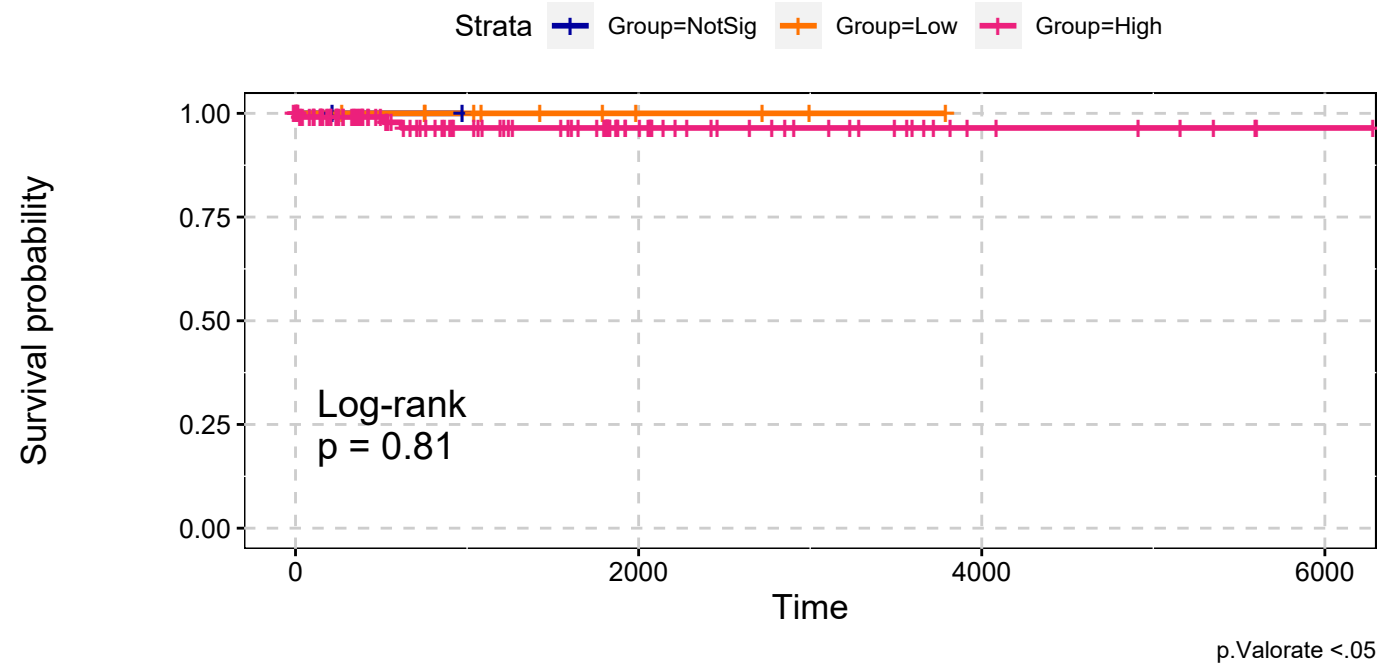


p.Valorate <.05

TGCT  
All Amplifications & All Deletions  
Max Sum Significance Signatures

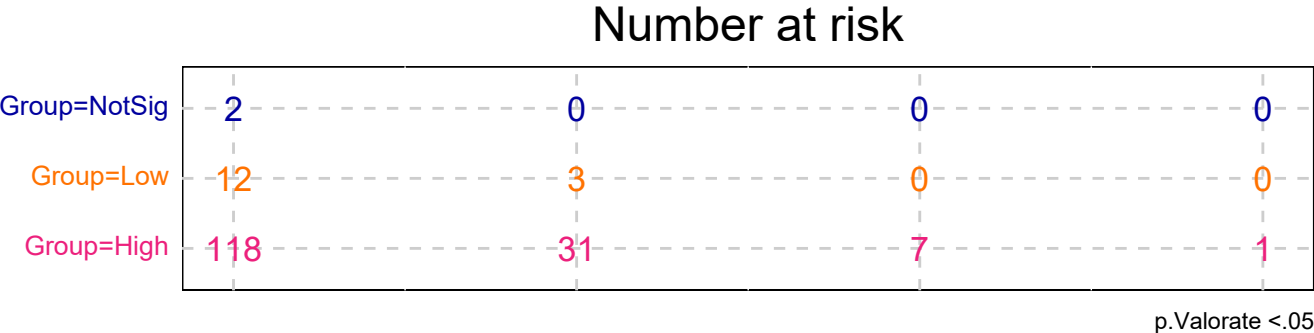


TGCT  
All Amplifications & All Deletions  
Max Sum Significance Signatures

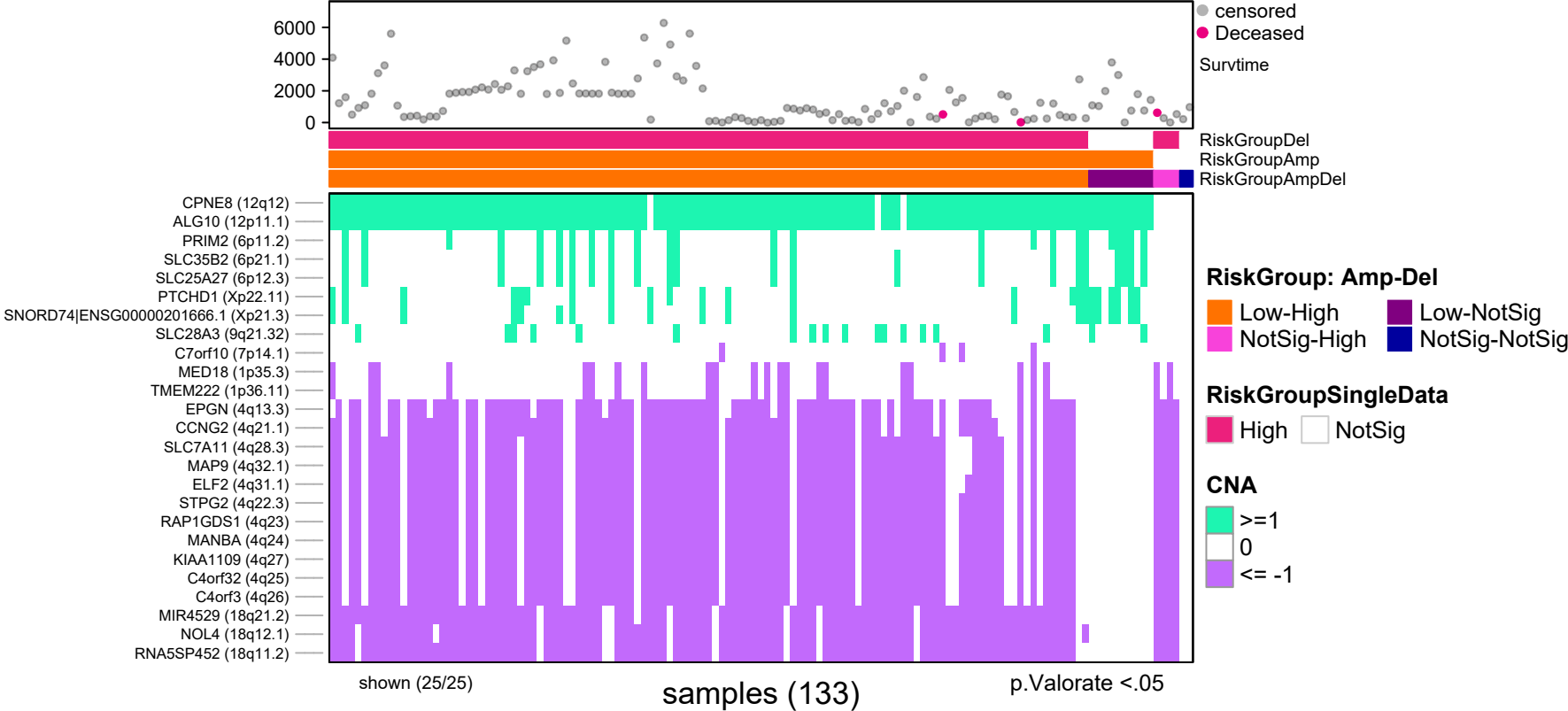


explanatory	beta	HR	L95	U95	p
Low	-0.01	0.99	0.00	Inf	1.00
High	18.20	80317879.55	0.00	Inf	1.00

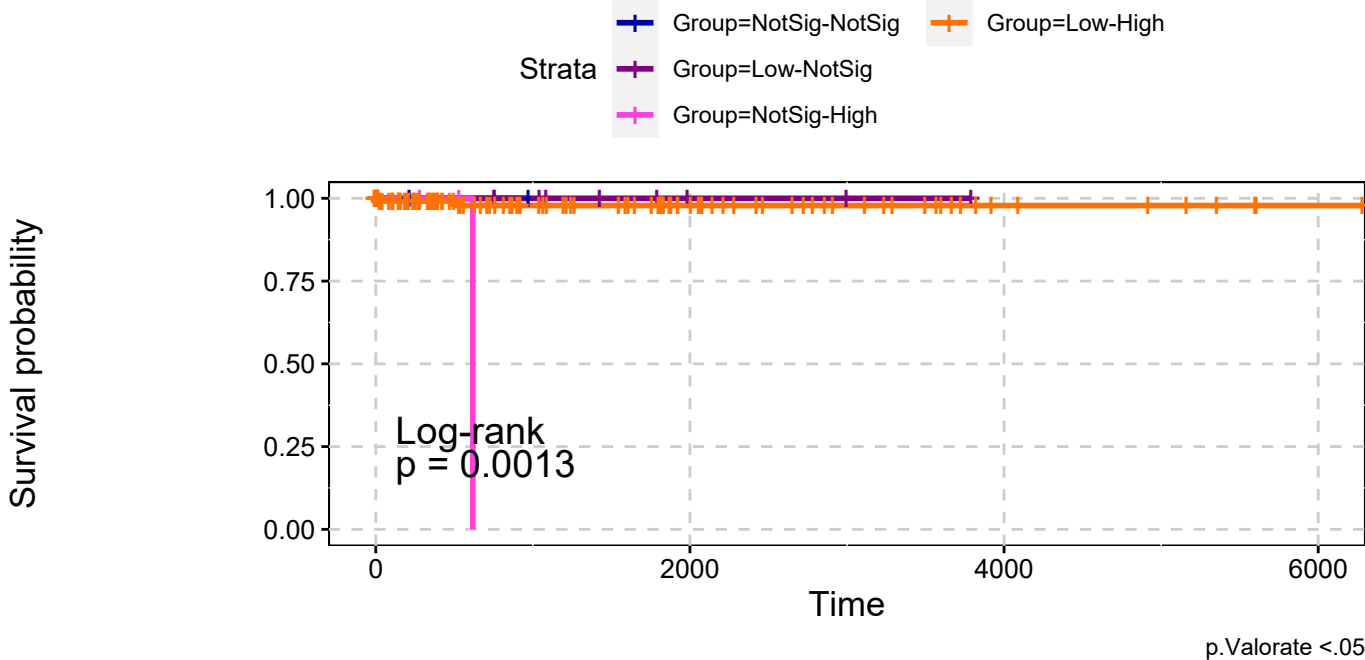
n= 133, number of events =3  
Score(logrank) test = 0.815



TGCT  
All Amplifications & All Deletions  
combining signatures

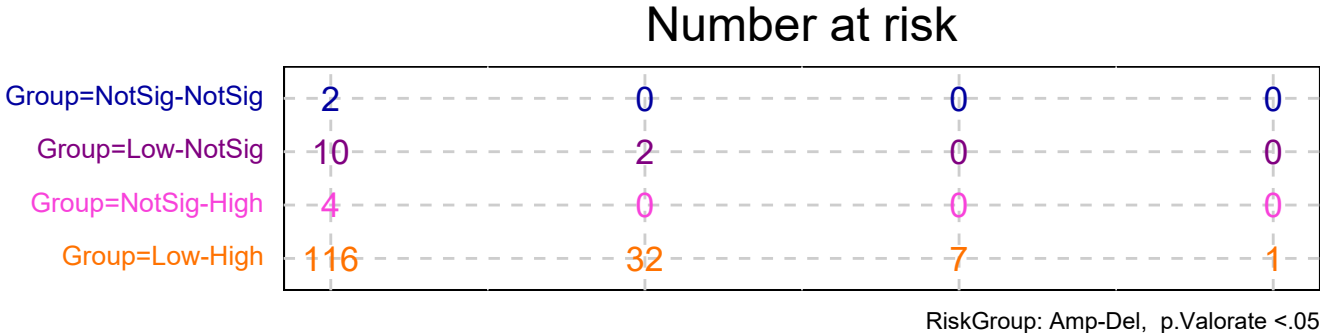


TGCT  
All Amplifications & All Deletions  
combining signatures



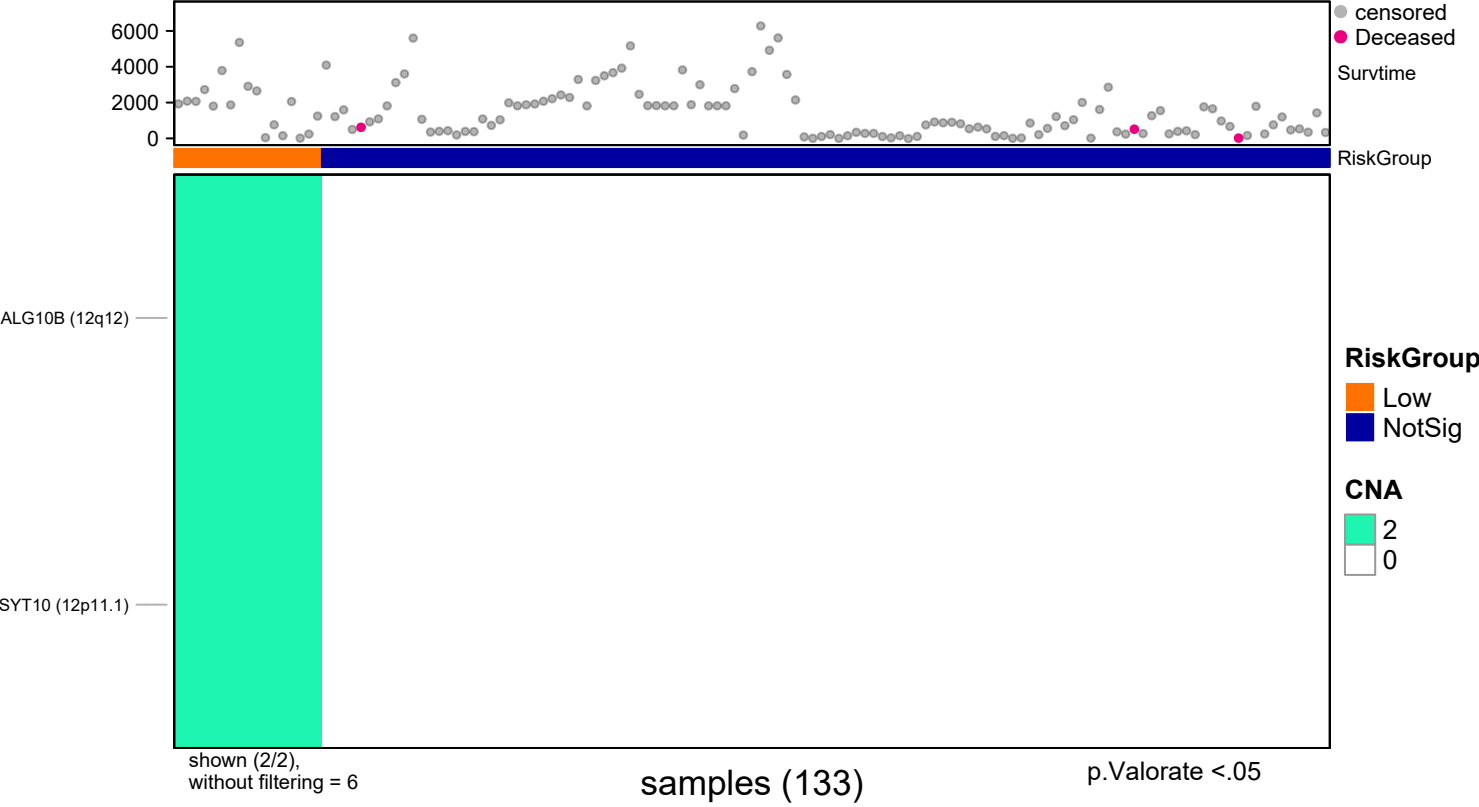
explanatory	beta	HR	L95	U95
Low-NotSig	-0.01	0.99	0.00	Inf
NotSig-High	20.29	649166942.68	57551431.10	73224542.10
Low-High	17.15	28150320.15	2495646.52	31752915.15

n= 133, number of events =3  
Score(logrank) test = 0.001

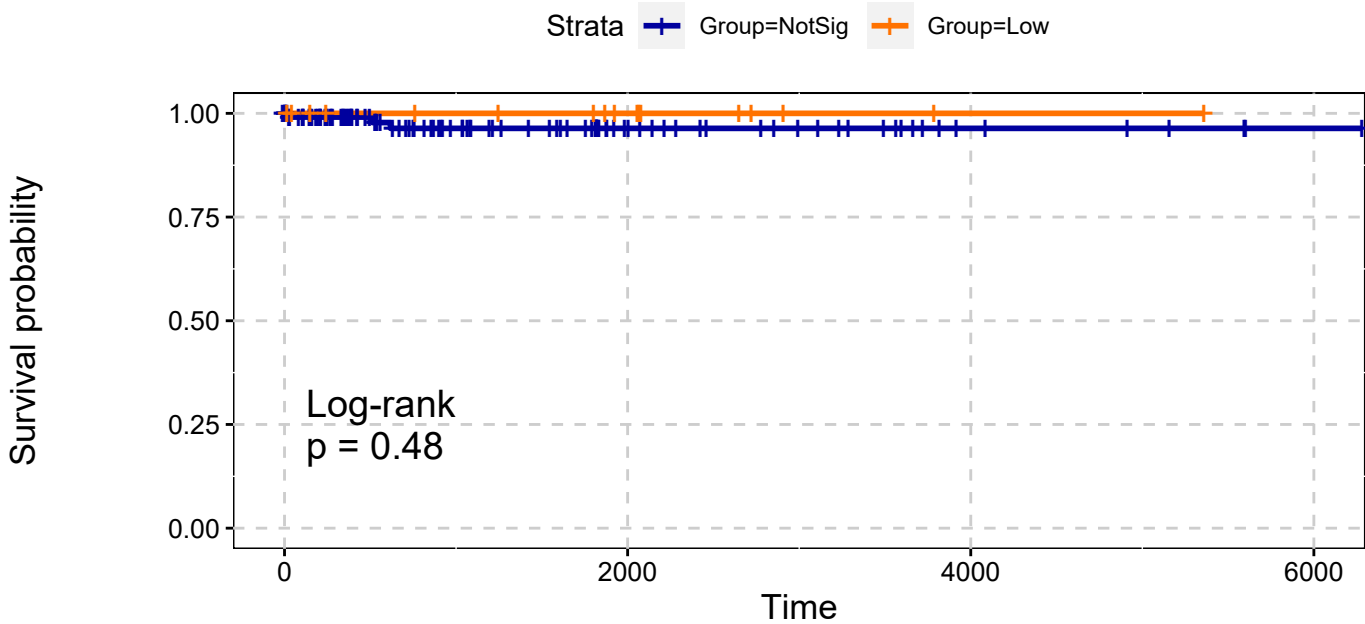




TGCT  
Deep Amplifications  
Single Data Signature



TGCT  
Deep Amplifications  
Single Data Signature

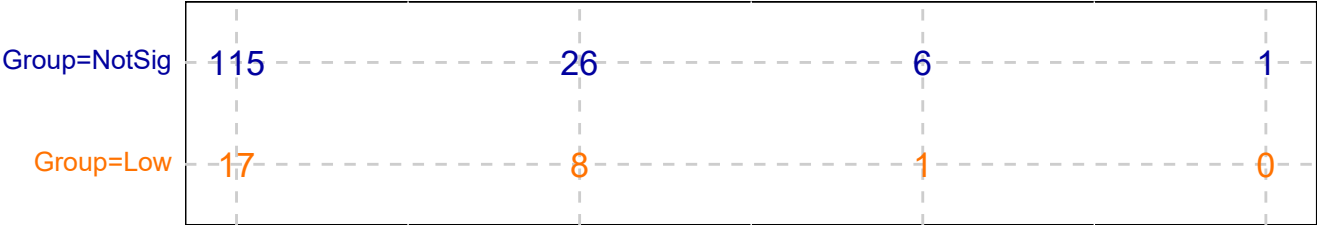


p.Valorate <.05

explanatory	beta	HR	L95	U95	p
Low	-18.25	0.00	0.00	Inf	1.00

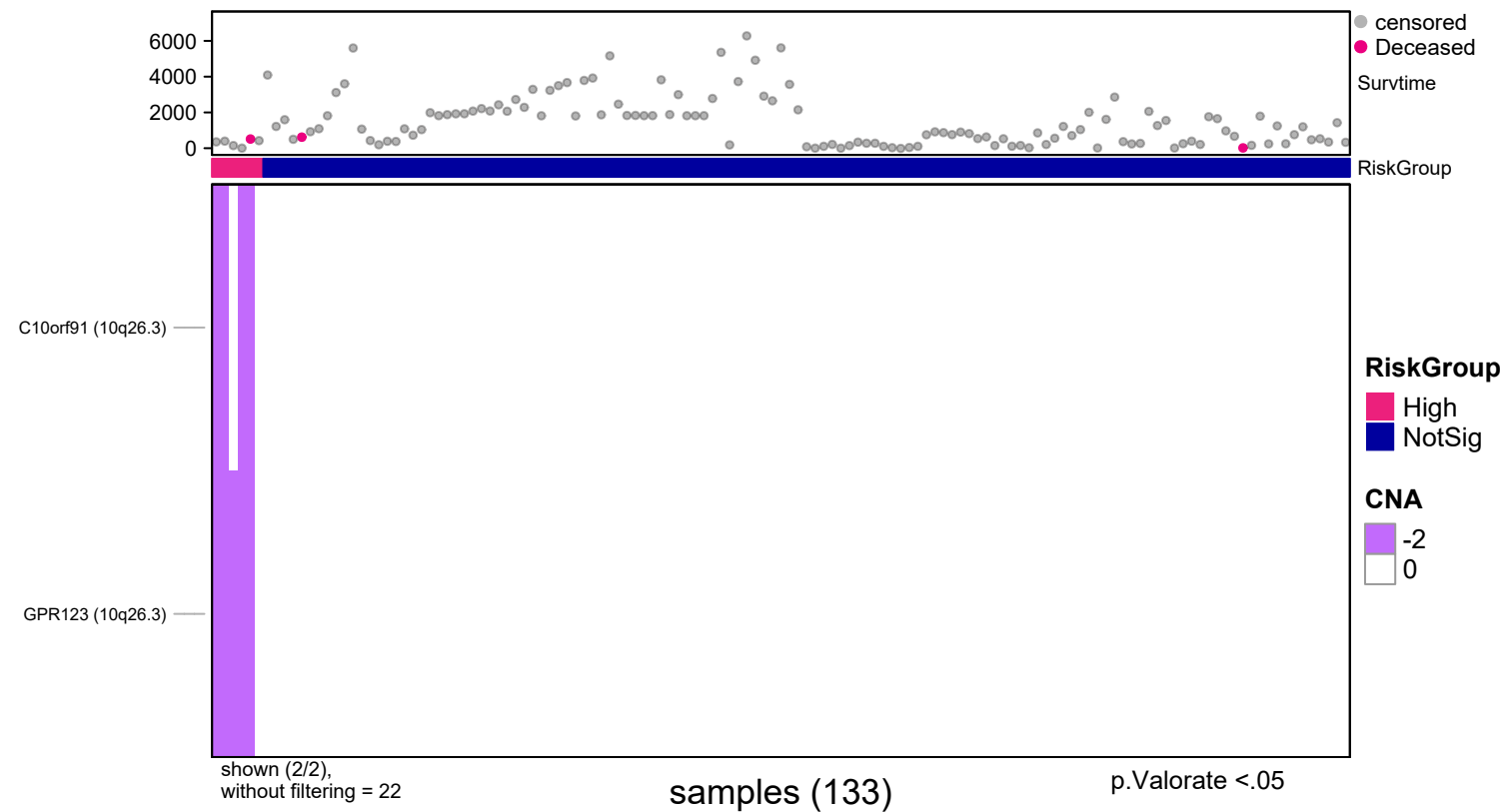
n= 133, number of events =3  
Score(logrank) test = 0.478

Number at risk

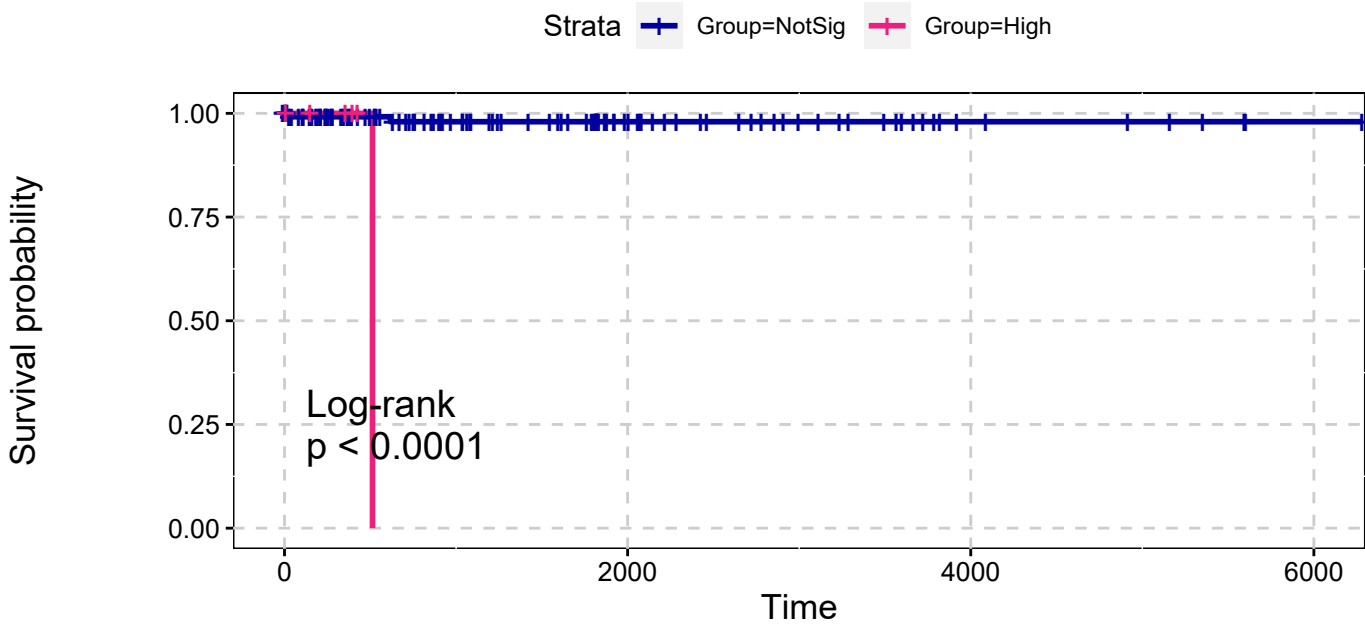


p.Valorate <.05

TGCT  
Deep Deletions  
Single Data Signature



TGCT  
Deep Deletions  
Single Data Signature

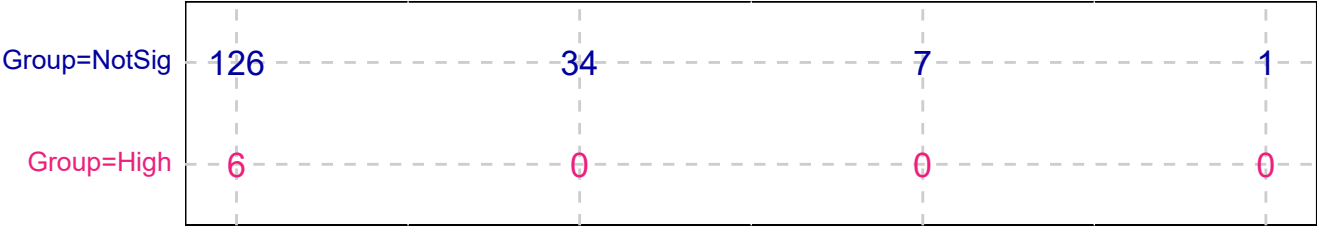


p.Valorate <.05

explanatory	beta	HR	L95	U95	p
High	3.83	46.07	2.50	848.30	0.01

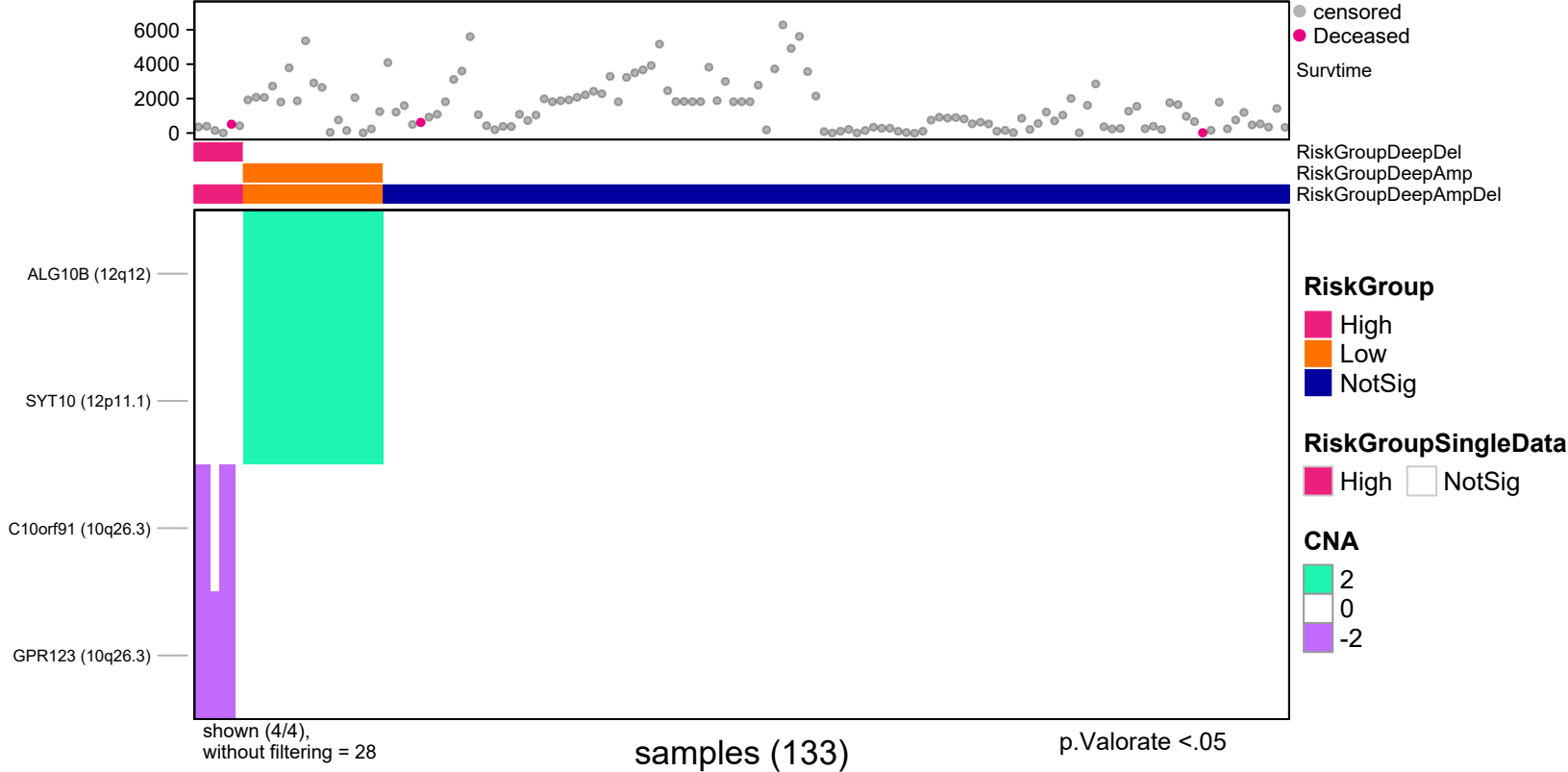
n= 133, number of events =3  
Score(logrank) test =  $p < .0001$

Number at risk

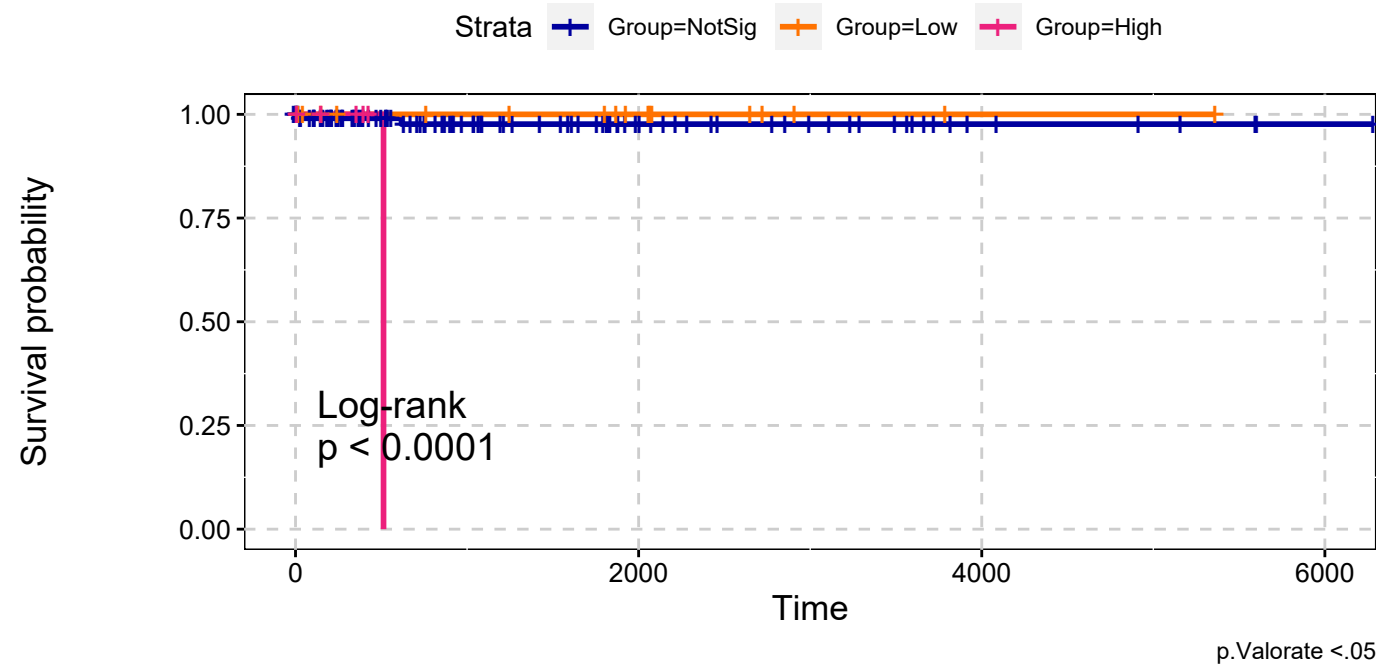


p.Valorate <.05

TGCT  
Deep Amplifications & Deep Deletions  
Max Sum Significance Signatures

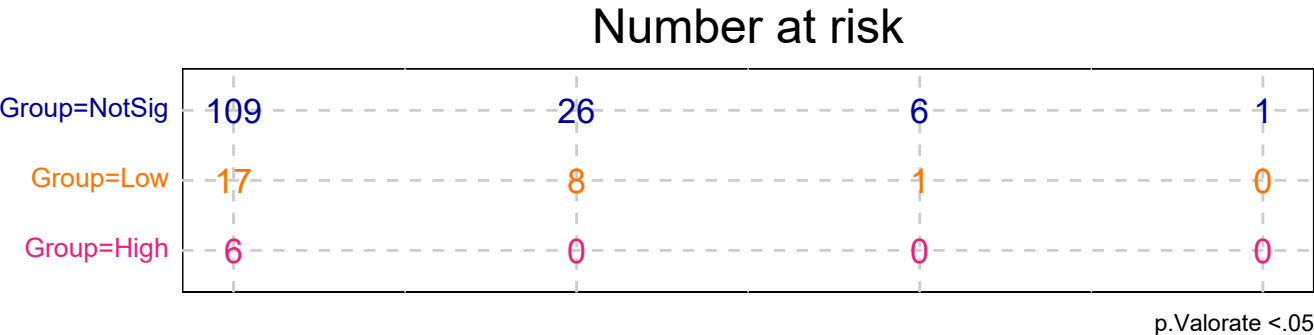


TGCT  
Deep Amplifications & Deep Deletions  
Max Sum Significance Signatures

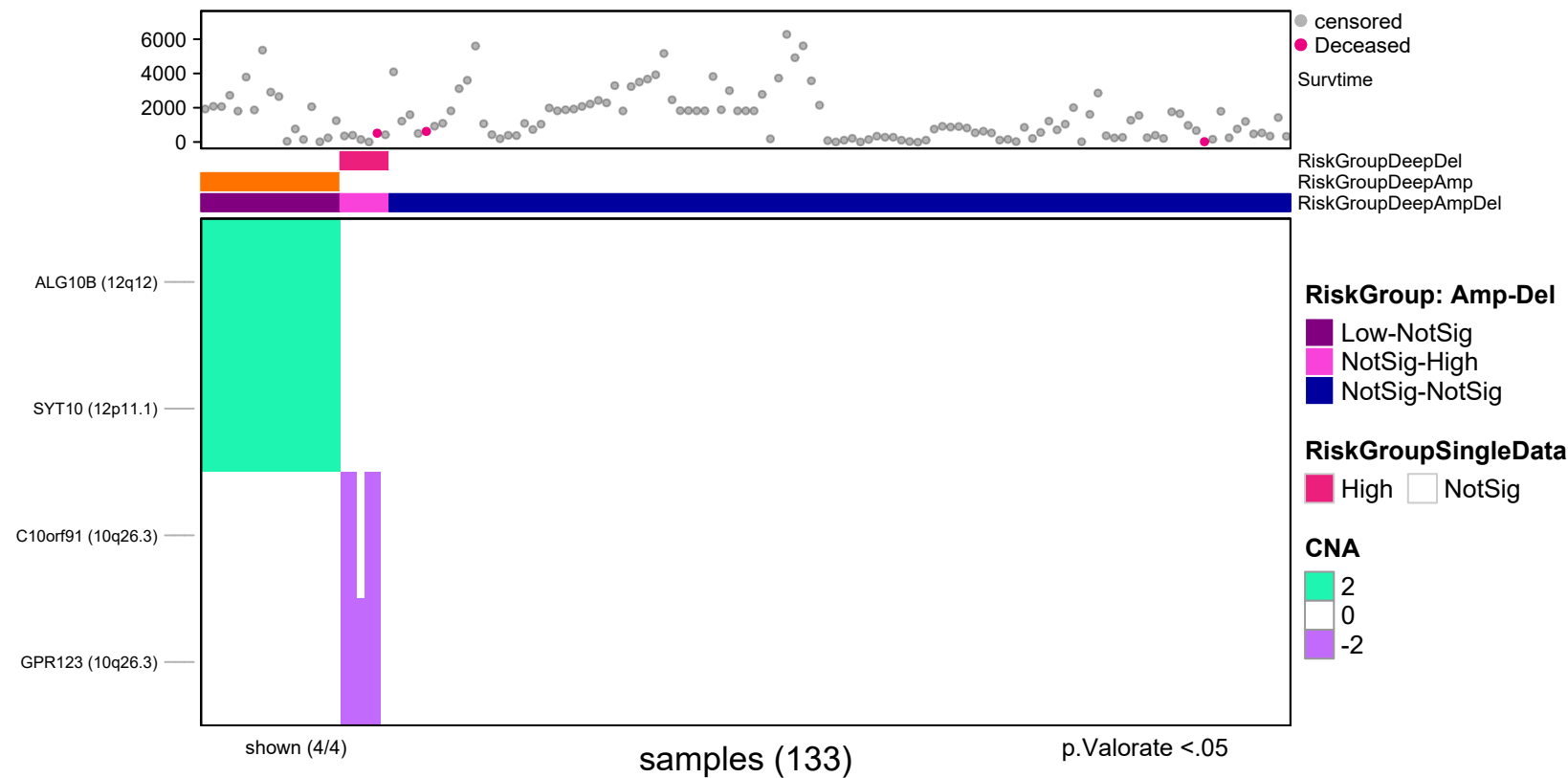


explanatory	beta	HR	L95	U95	p
Low	-17.24	0.00	0.00	Inf	1.00
High	3.68	39.61	2.16	725.82	0.01

n= 133, number of events =3  
Score(logrank) test = p <.0001



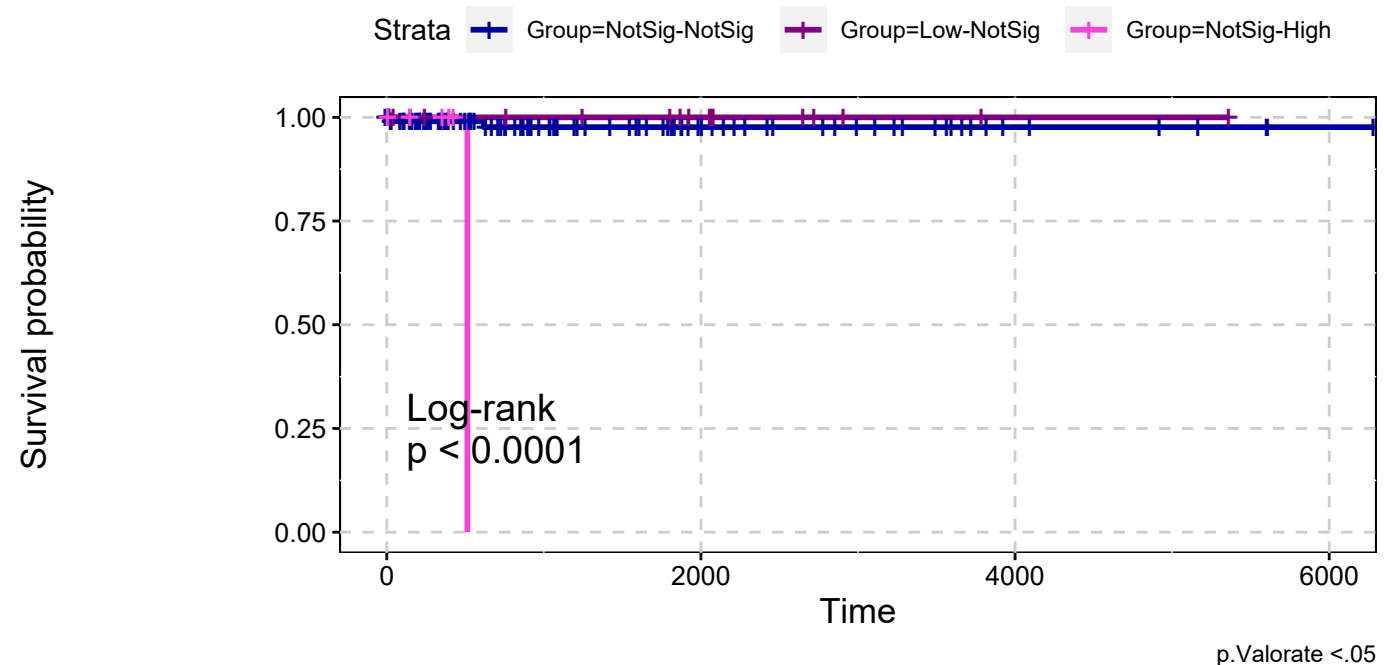
TGCT  
Deep Amplifications & Deep Deletions  
combining signatures



# TGCT

## Deep Amplifications & Deep Deletions

### combining signatures



explanatory	beta	HR	L95	U95	p
Low-NotSig	-17.24	0.00	0.00	Inf	1.00
NotSig-High	3.68	39.61	2.16	725.82	0.01

n= 133, number of events =3  
Score(logrank) test = p <.0001

