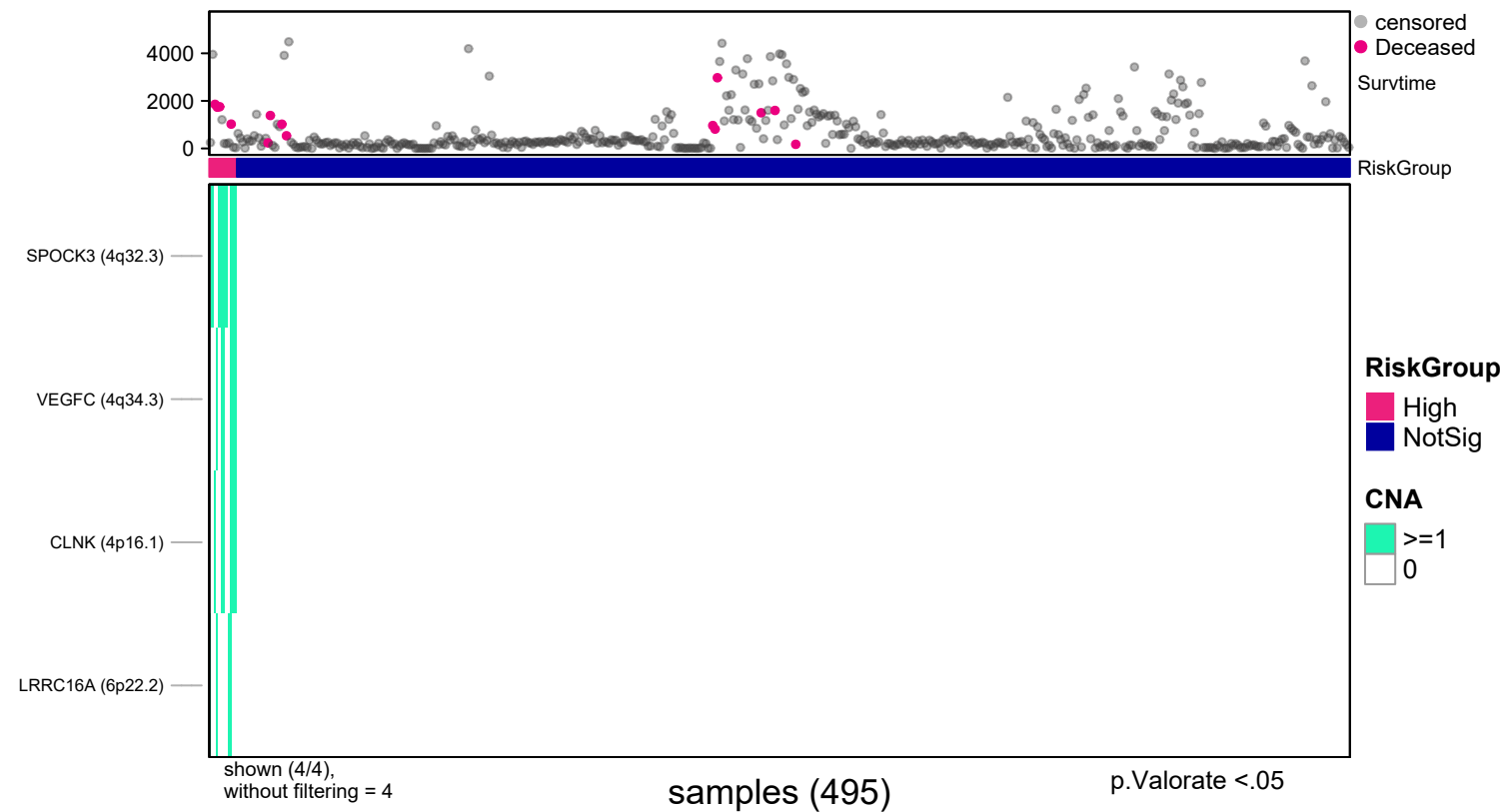
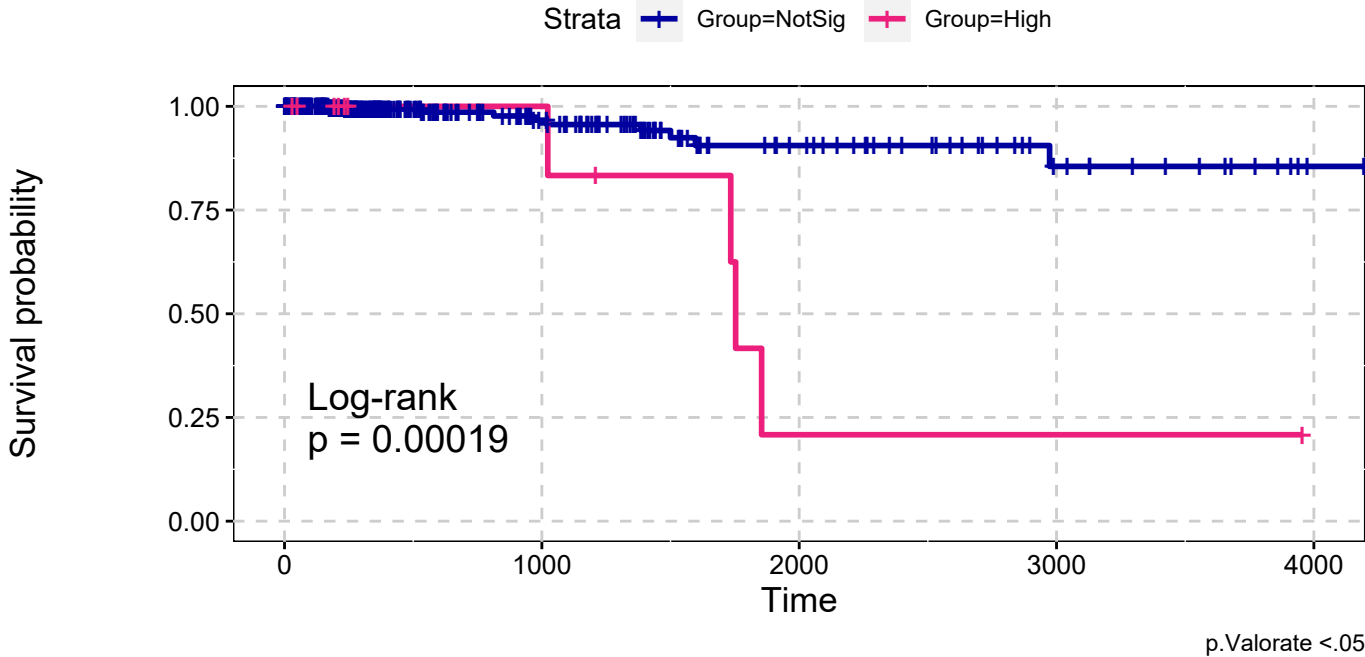


THCA
All Amplifications
Single Data Signature

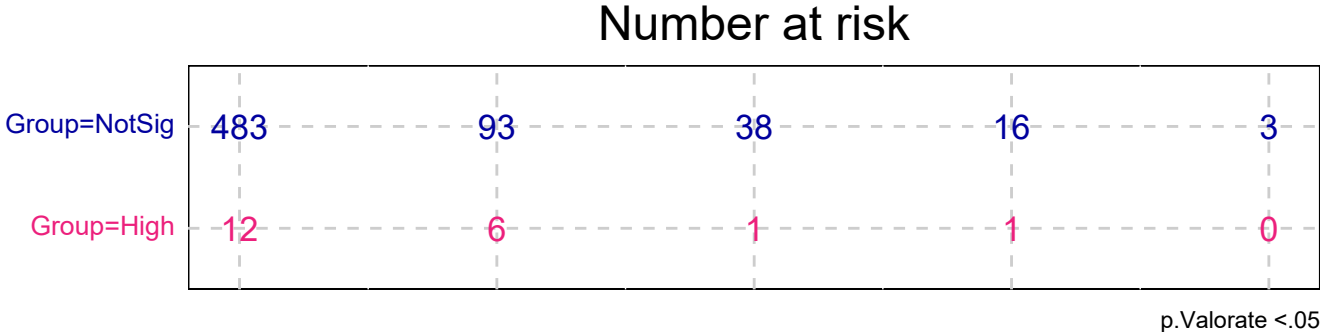


THCA
All Amplifications
Single Data Signature

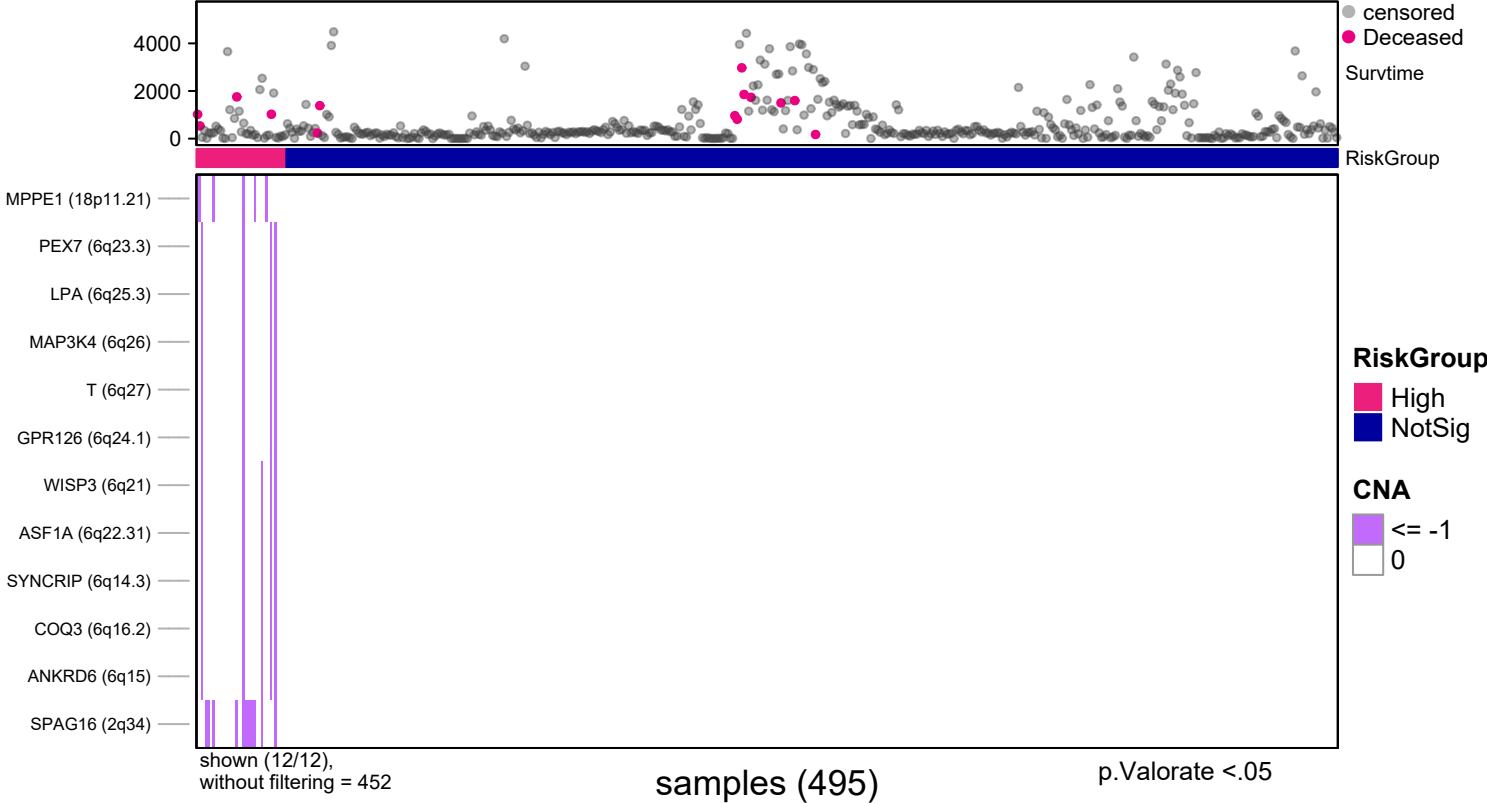


explanatory	beta	HR	L95	U95	p
High	1.92	6.85	2.12	22.09	0.00

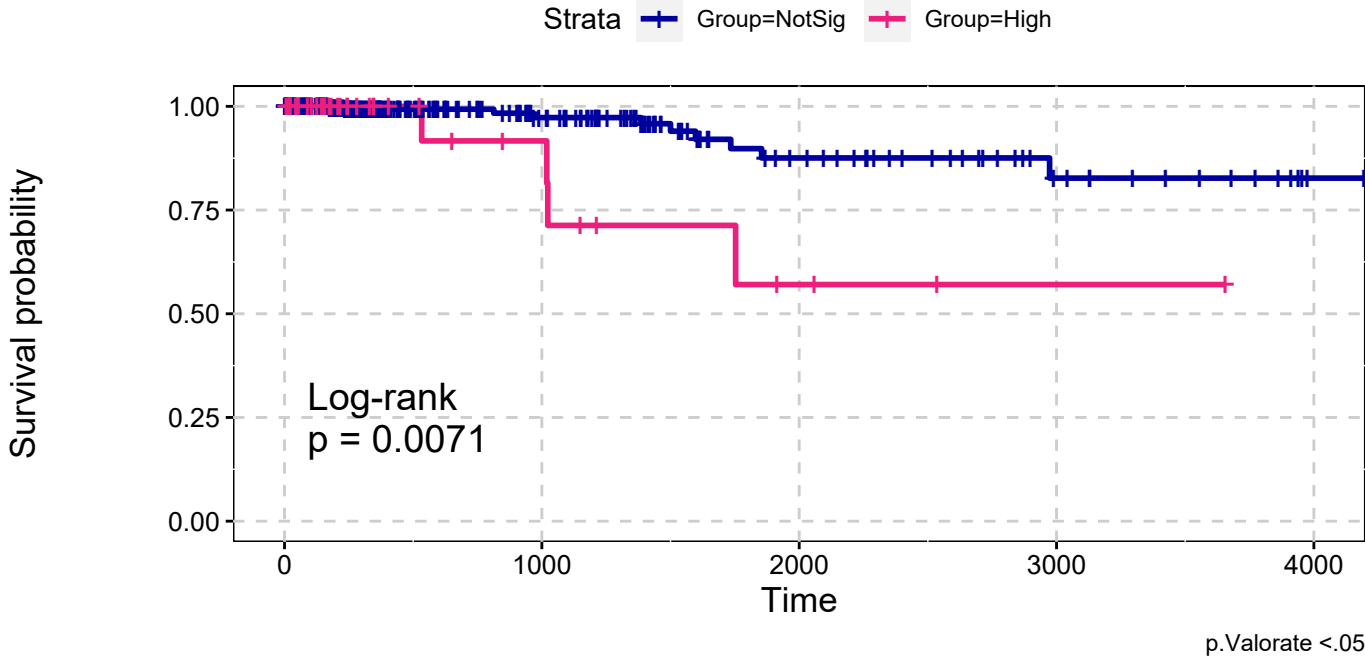
n= 495, number of events =14
Score(logrank) test = 0



THCA
All Deletions
Single Data Signature



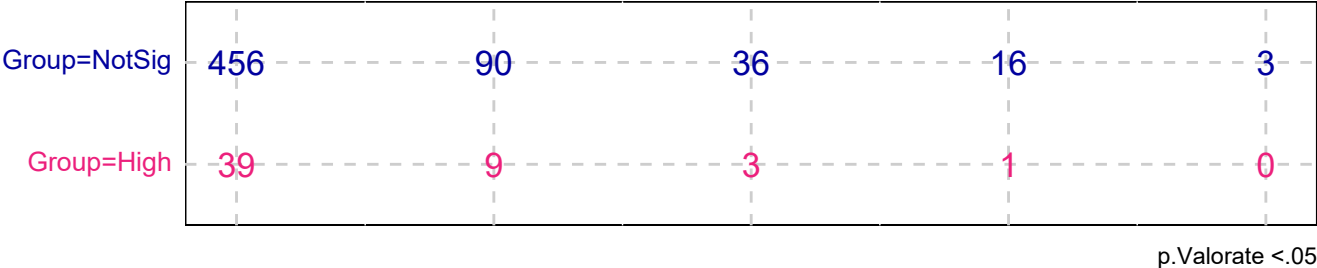
THCA
All Deletions
Single Data Signature



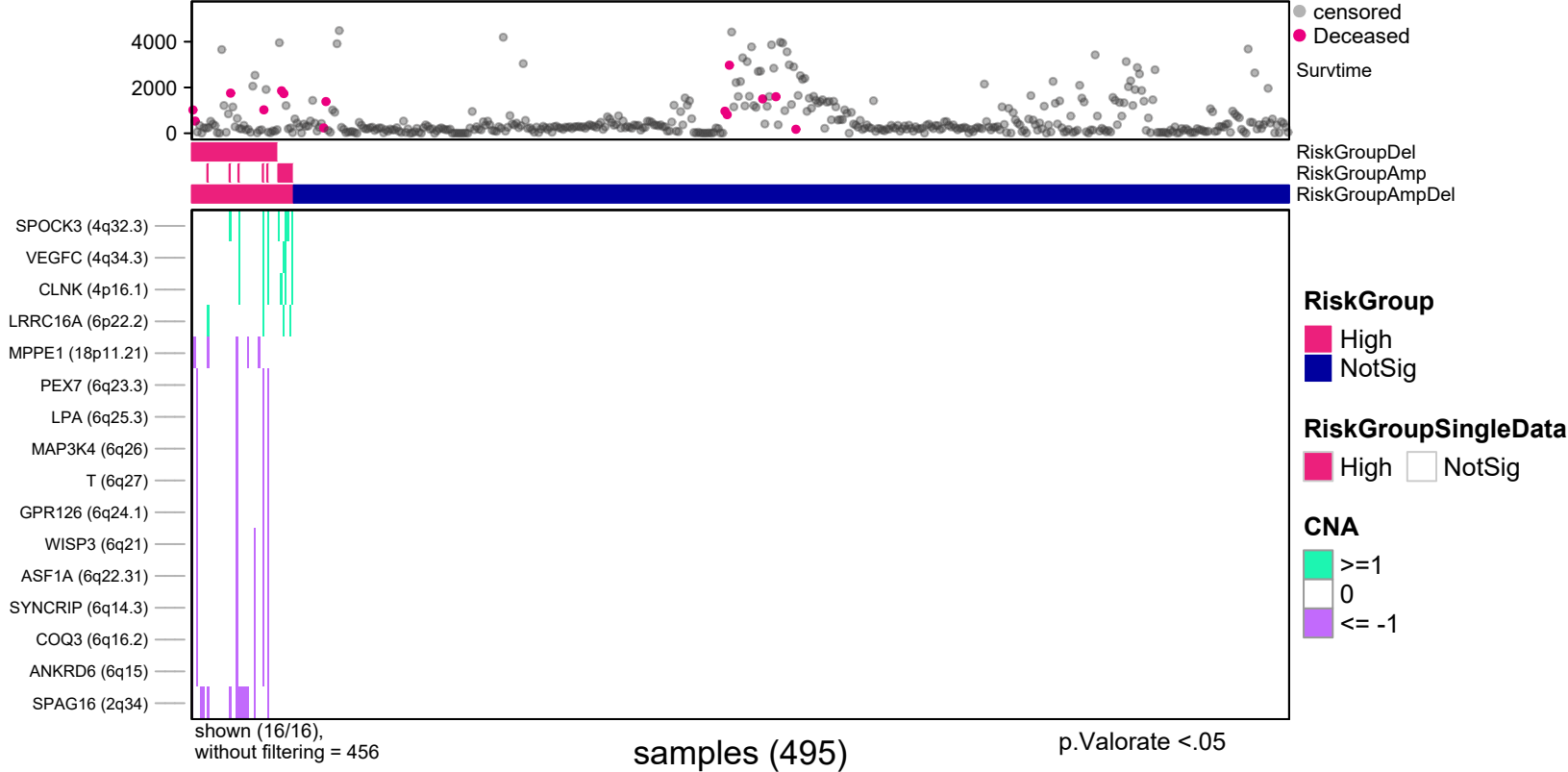
explanatory	beta	HR	L95	U95	p
High	1.47	4.33	1.35	13.88	0.01

n= 495, number of events =14
Score(logrank) test = 0.007

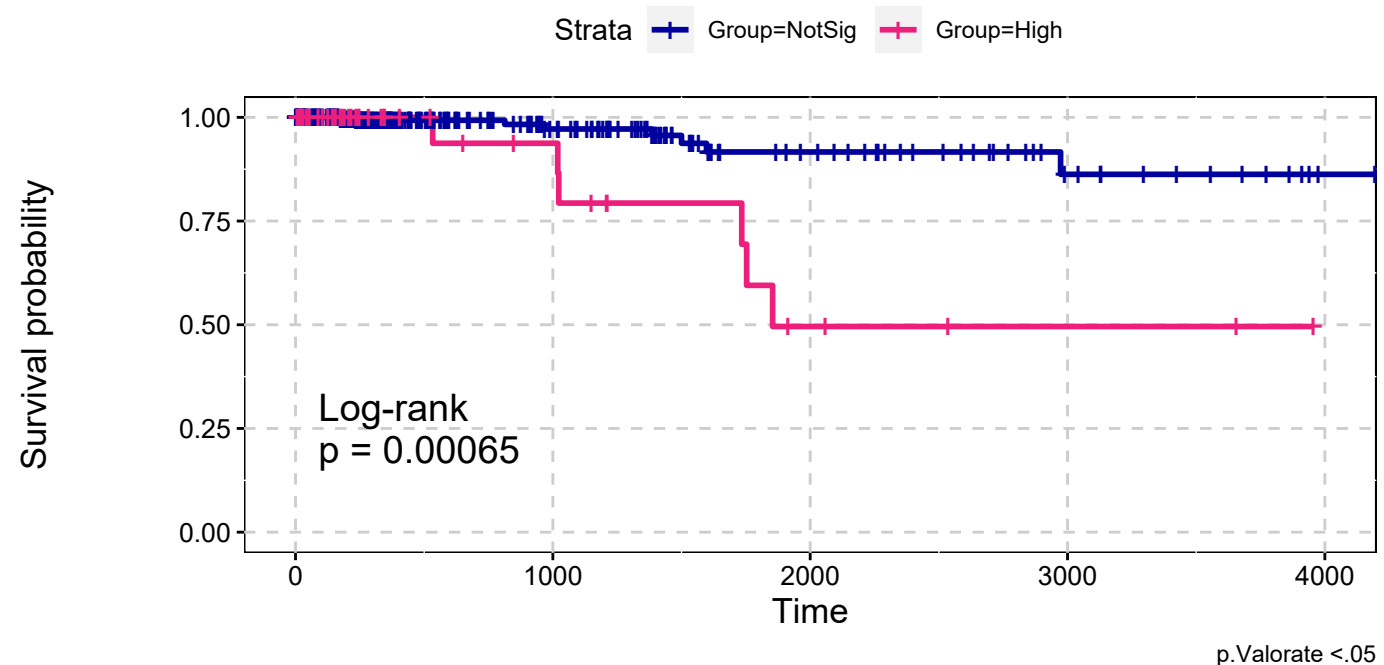
Number at risk



THCA
All Amplifications & All Deletions
Max Sum Significance Signatures

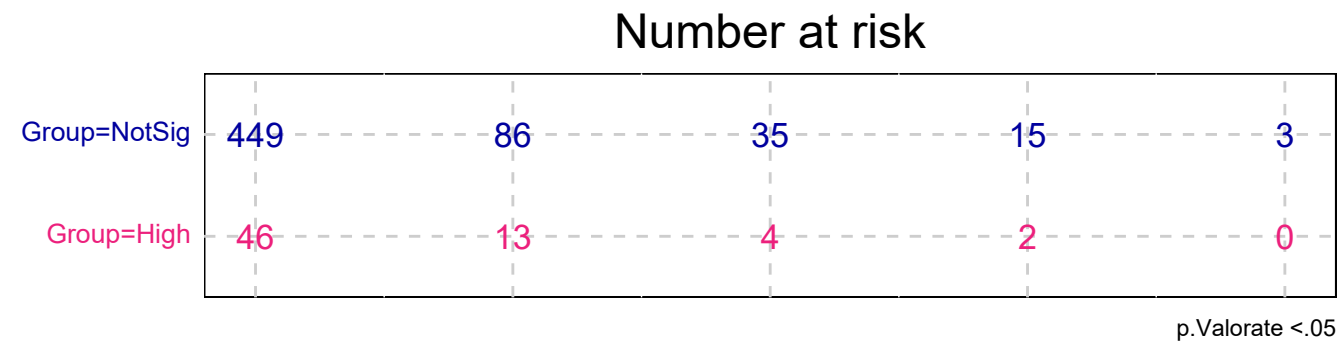


THCA
All Amplifications & All Deletions
Max Sum Significance Signatures

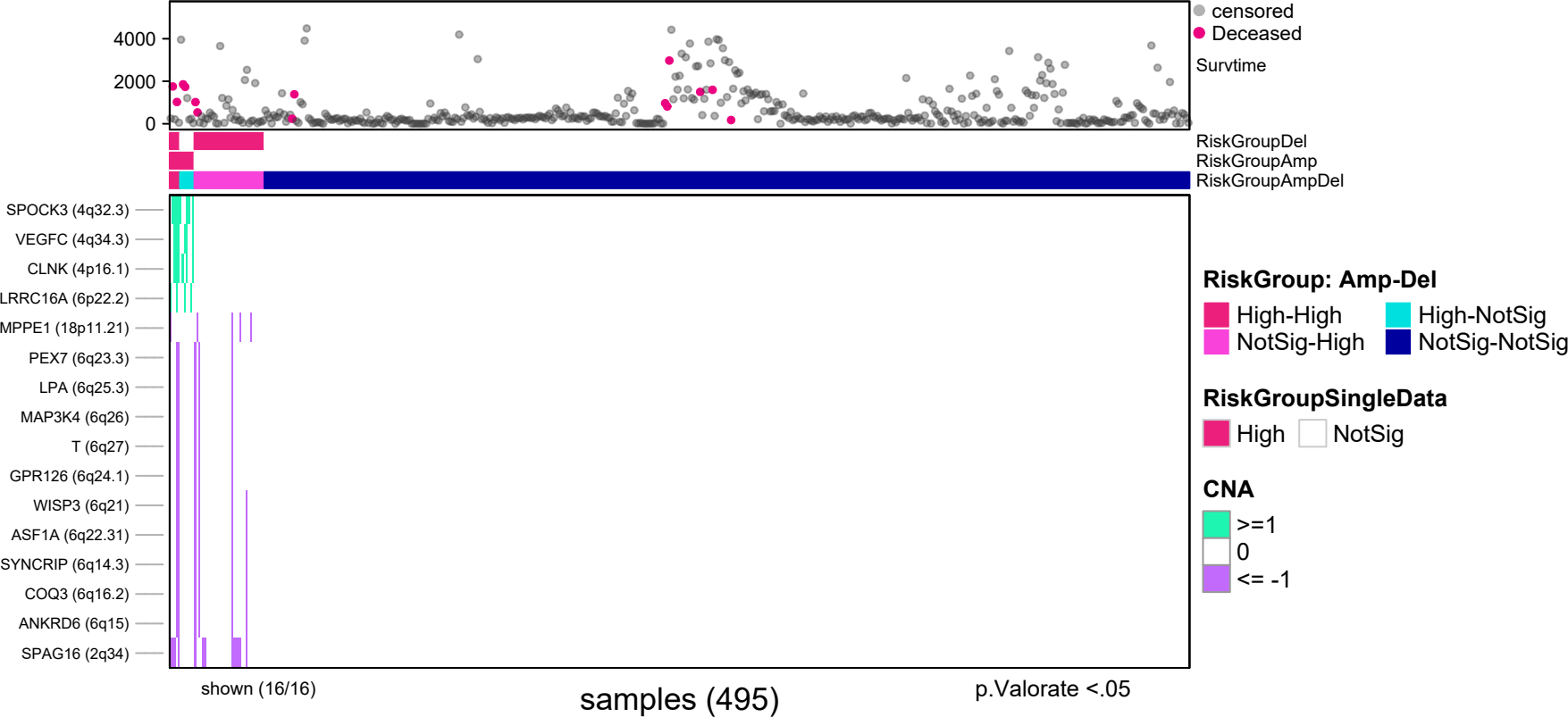


explanatory	beta	HR	L95	U95	p
High	1.66	5.25	1.81	15.23	0.00

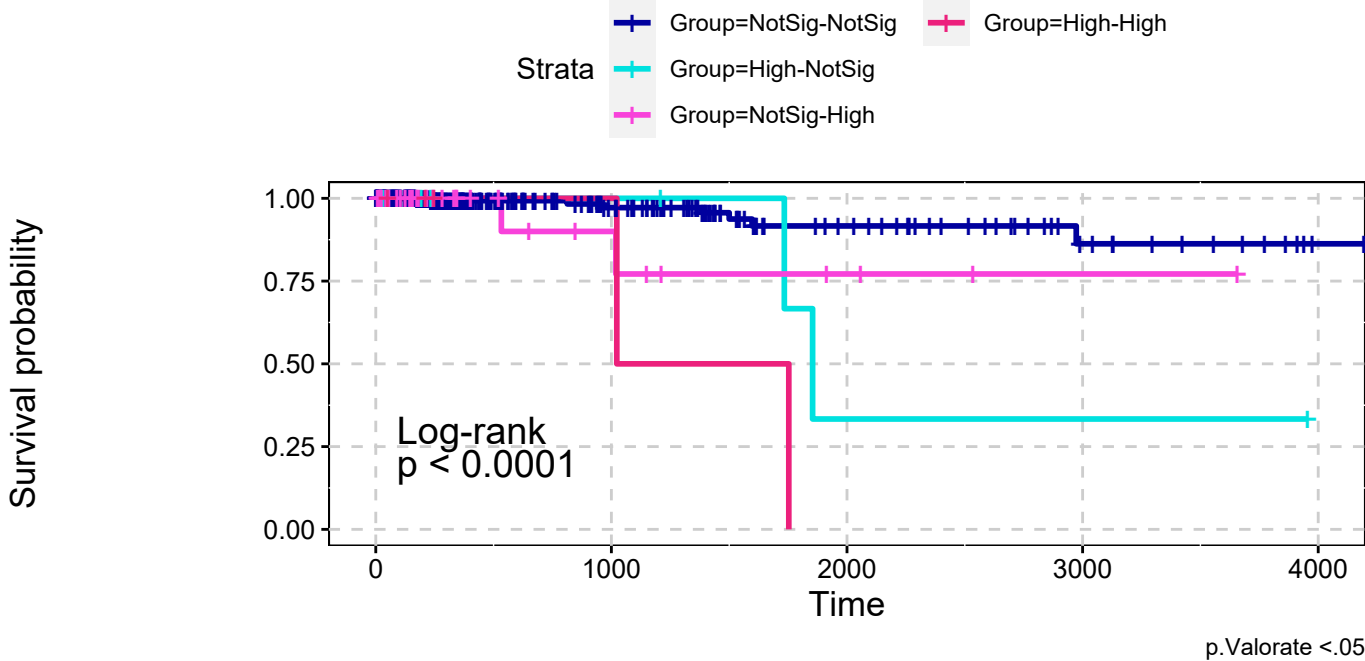
n= 495, number of events =14
Score(logrank) test = 0.001



THCA
All Amplifications & All Deletions
combining signatures



THCA
All Amplifications & All Deletions
combining signatures



explanatory	beta	HR	L95	U95	p
High-NotSig	1.68	5.38	1.13	25.63	0.03
NotSig-High	1.15	3.14	0.67	14.85	0.15
High-High	2.72	15.20	3.15	73.41	0.00

n= 495, number of events =14
Score(logrank) test = p <.0001

Number at risk

Group=NotSig-NotSig	449	86	35	15	3
Group=High-NotSig	7	4	1	1	0
Group=NotSig-High	34	7	3	1	0
Group=High-High	5	2	0	0	0

RiskGroup: Amp-Del, p.Valorate <.05