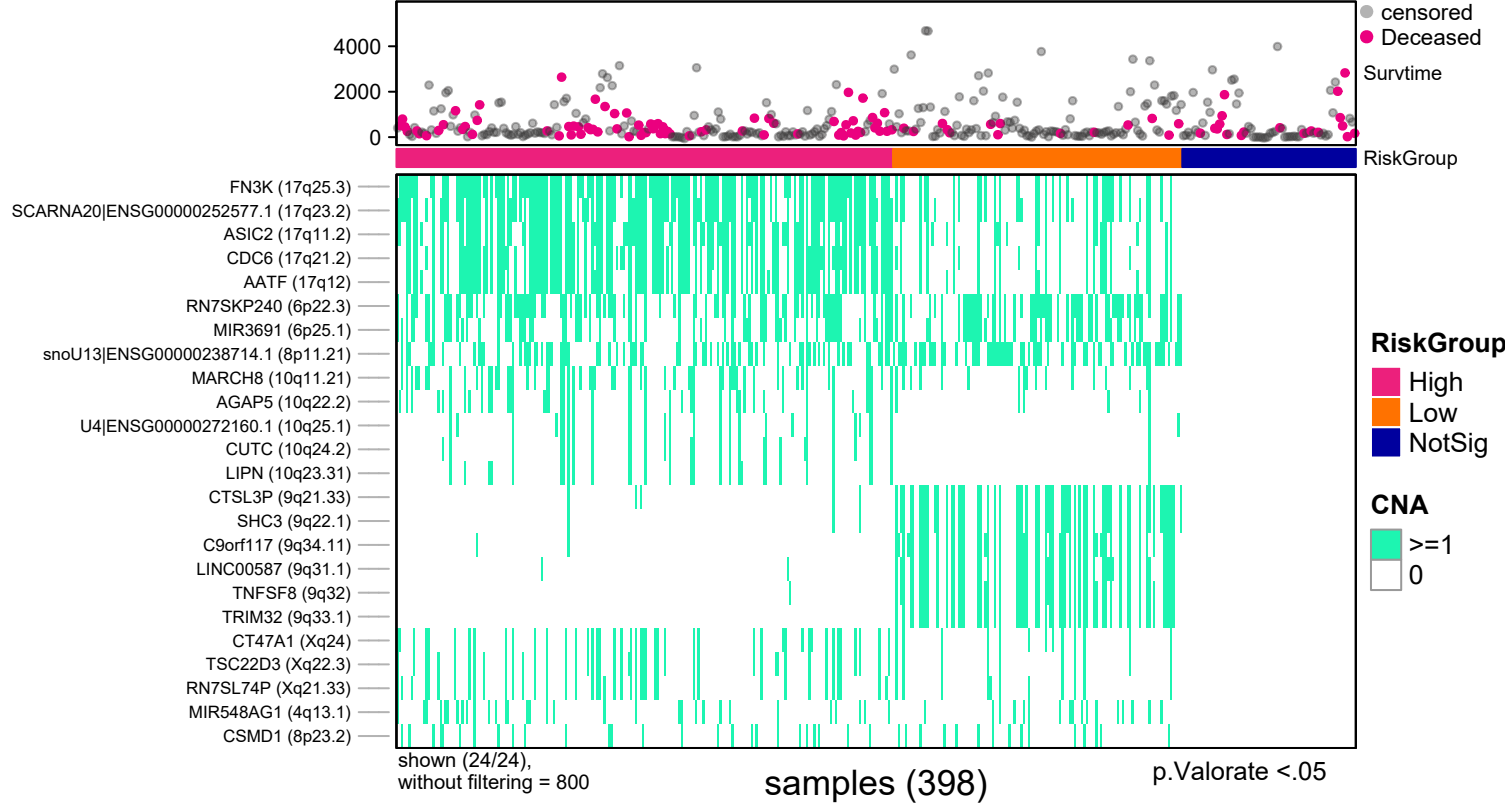
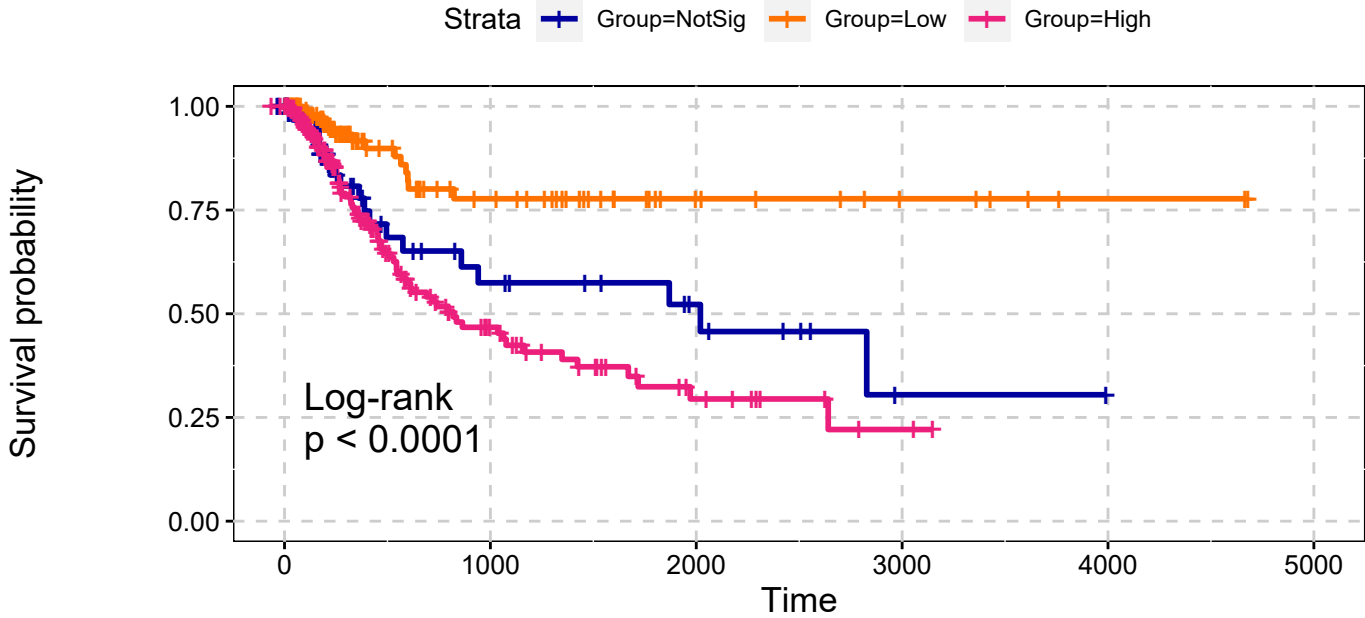


BLCA
All Amplifications
Single Data Signature



BLCA
All Amplifications
Single Data Signature

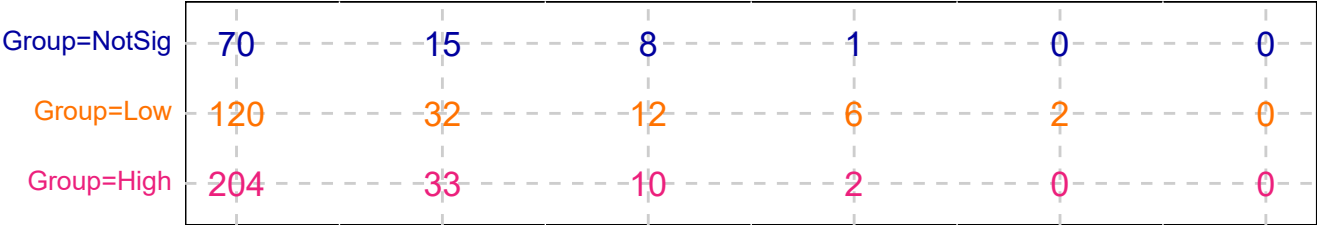


explanatory	beta	HR	L95	U95	p
Low	-1.01	0.36	0.18	0.73	0.00
High	0.34	1.40	0.84	2.32	0.19

n= 398, number of events =107
Score(logrank) test = p <.0001

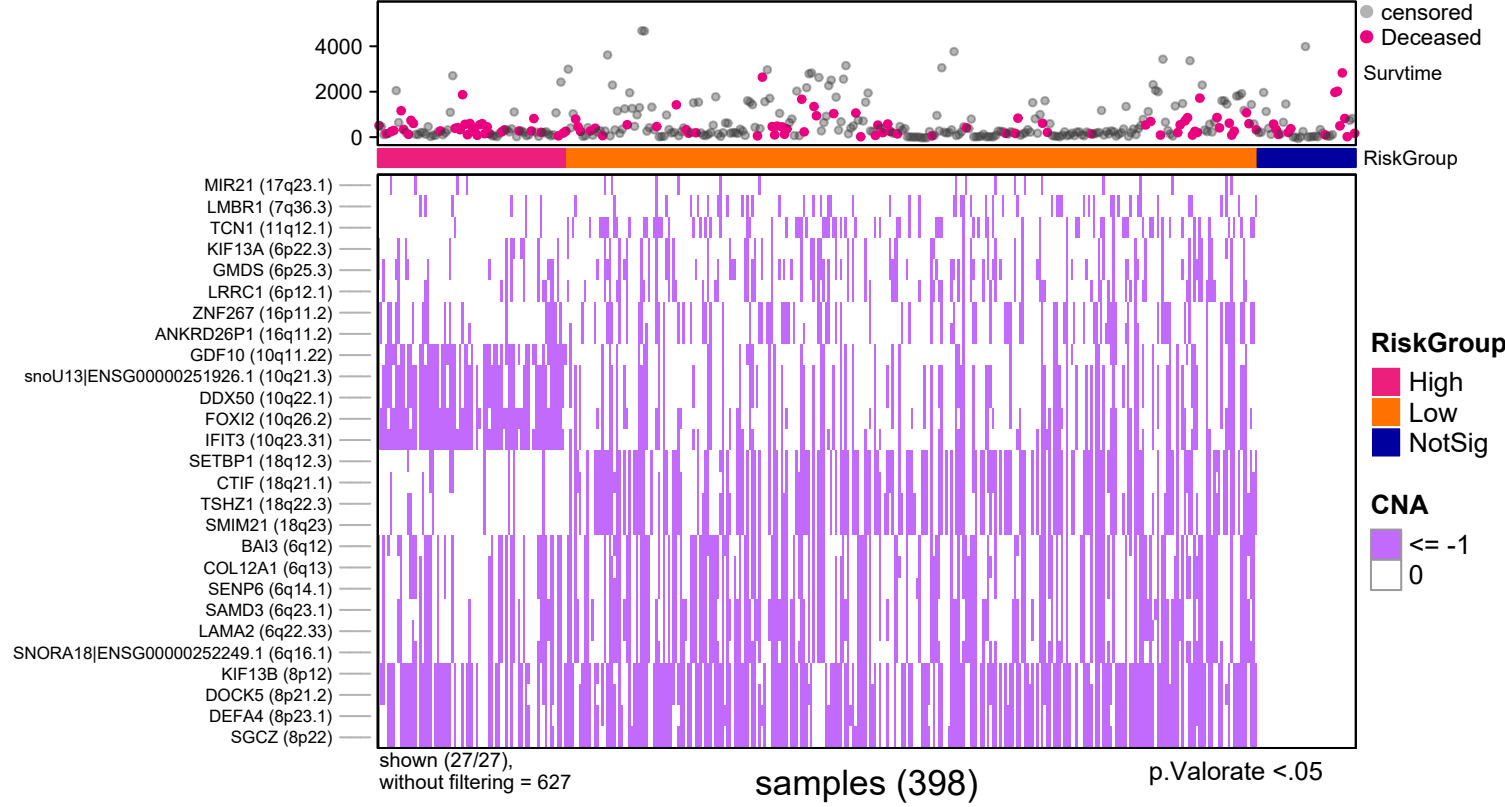
p.Valorate <.05

Number at risk

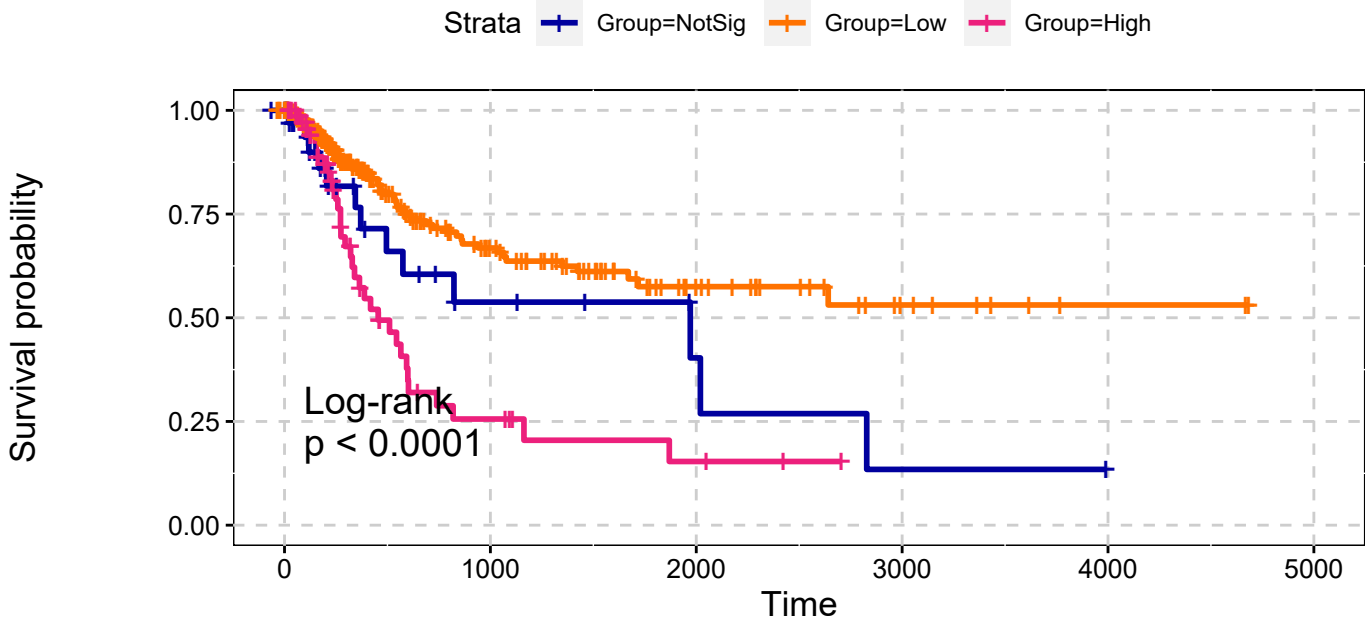


p.Valorate <.05

BLCA
All Deletions
Single Data Signature



BLCA
All Deletions
Single Data Signature

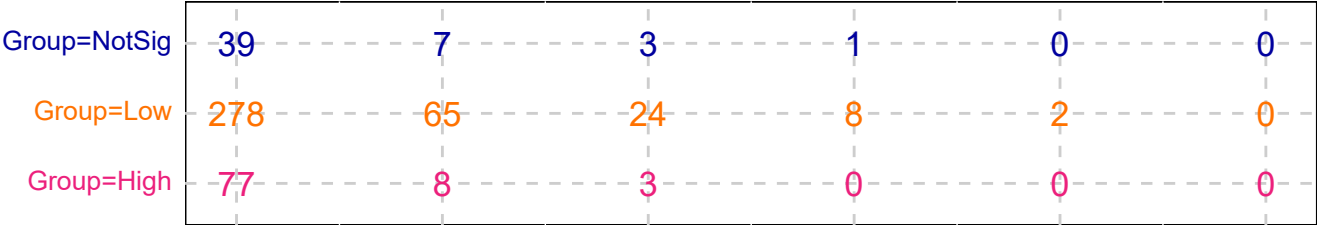


p.Valorate <.05

explanatory	beta	HR	L95	U95	p
Low	-0.60	0.55	0.30	1.00	0.05
High	0.51	1.66	0.87	3.17	0.12

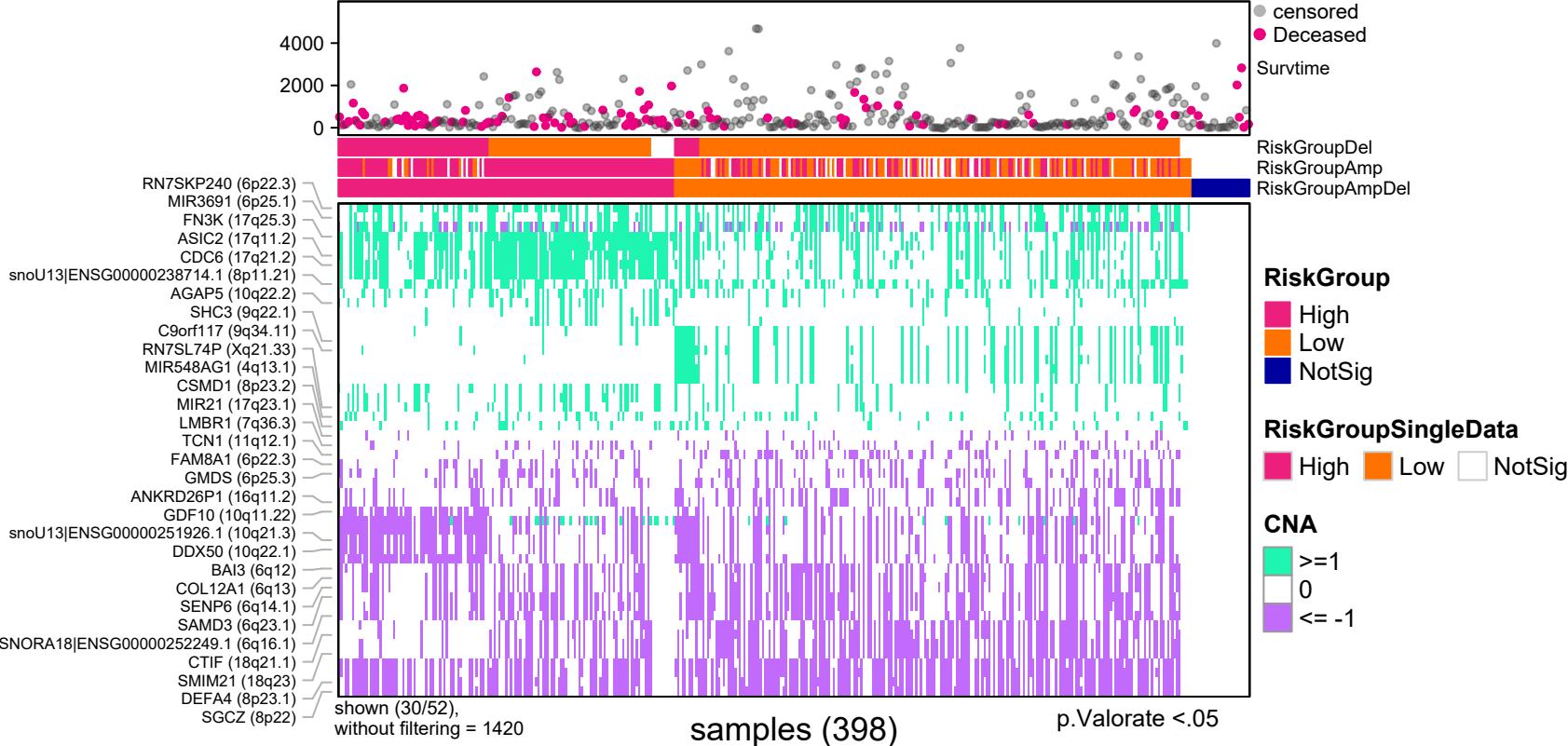
n= 398, number of events =107
Score(logrank) test = p <.0001

Number at risk

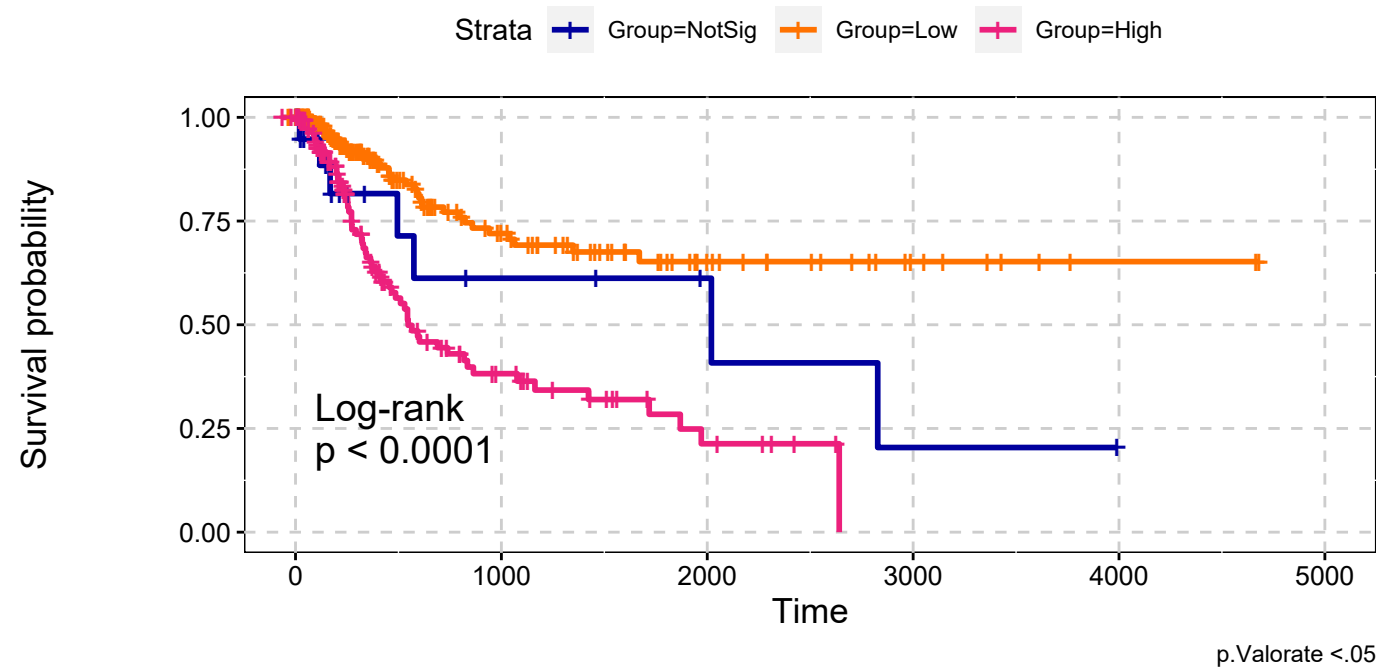


p.Valorate <.05

BLCA
All Amplifications & All Deletions
Max Sum Significance Signatures

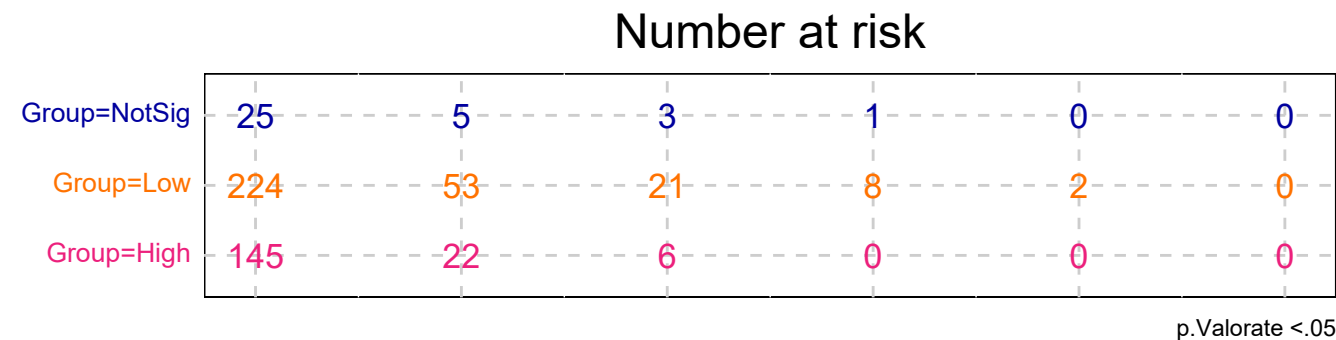


BLCA
All Amplifications & All Deletions
Max Sum Significance Signatures

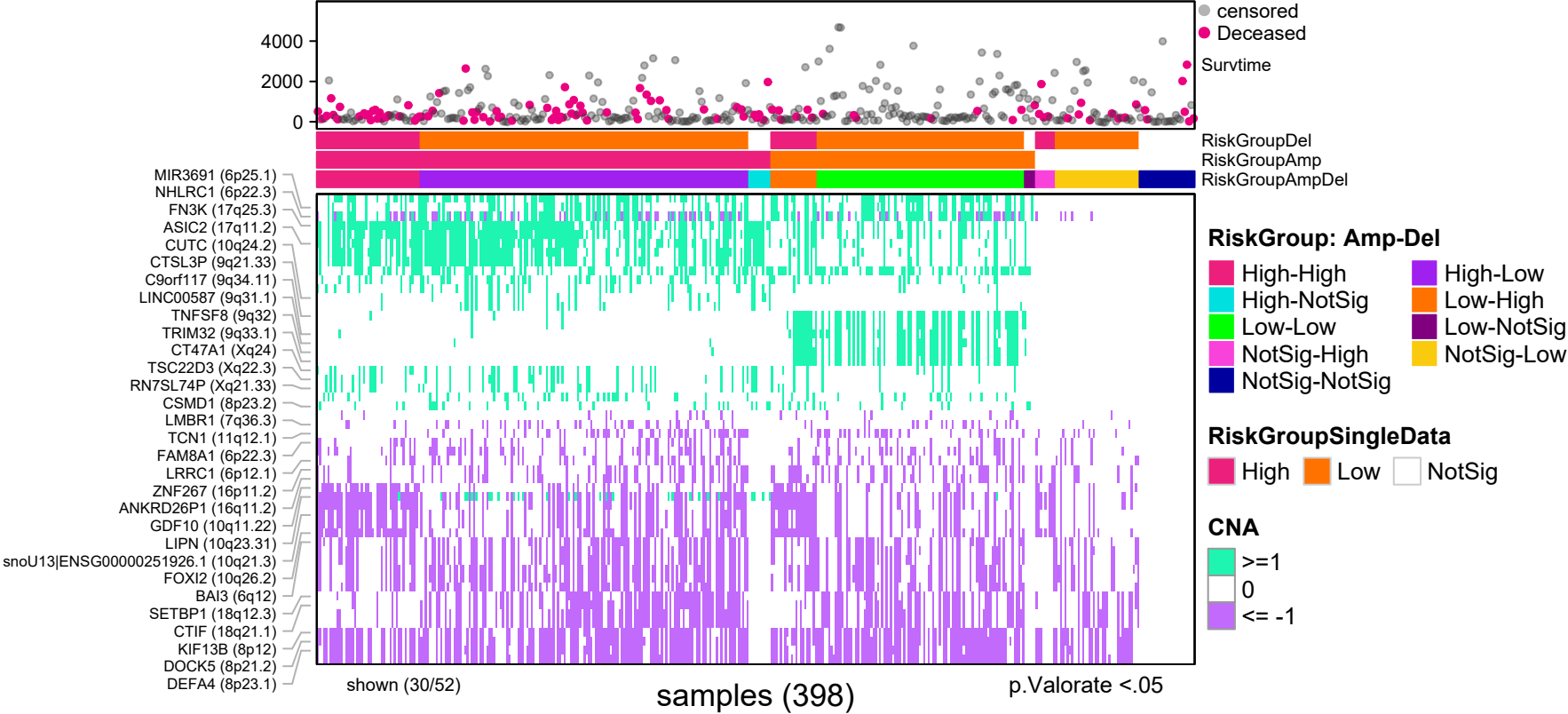


explanatory	beta	HR	L95	U95	p
Low	-0.74	0.48	0.21	1.07	0.07
High	0.47	1.60	0.73	3.53	0.24

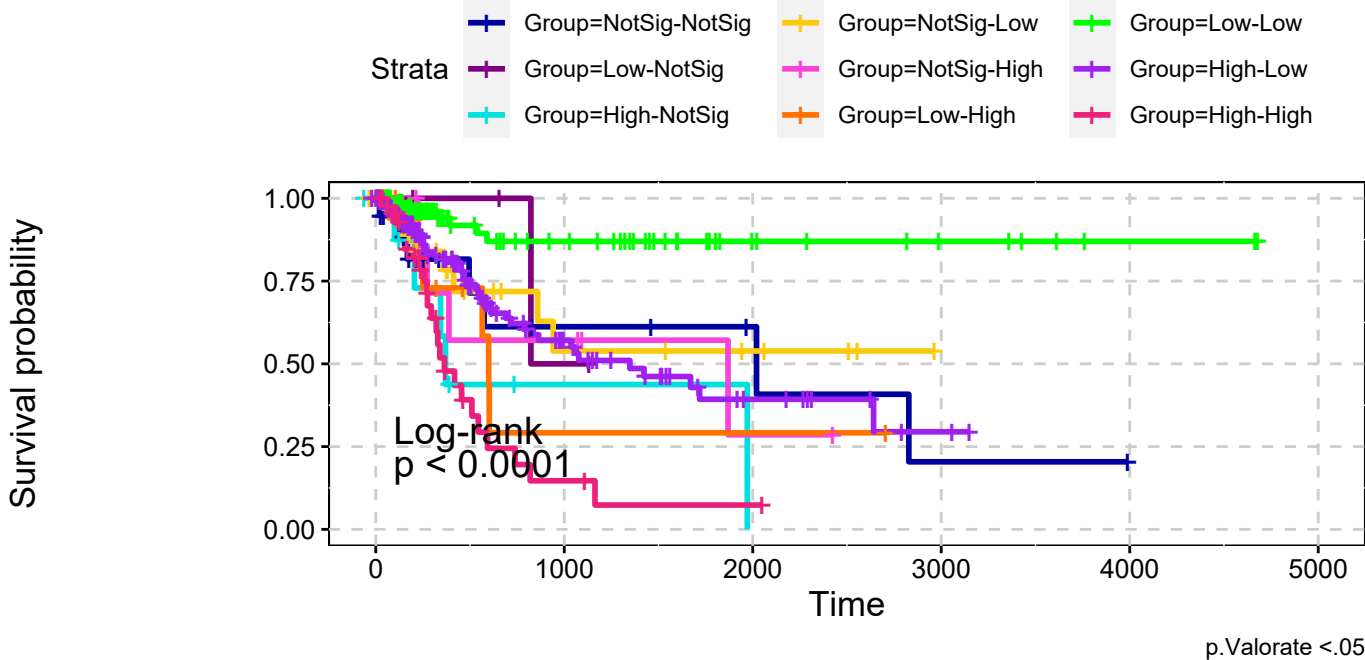
n= 398, number of events =107
Score(logrank) test = p <.0001



BLCA
All Amplifications & All Deletions
combining signatures



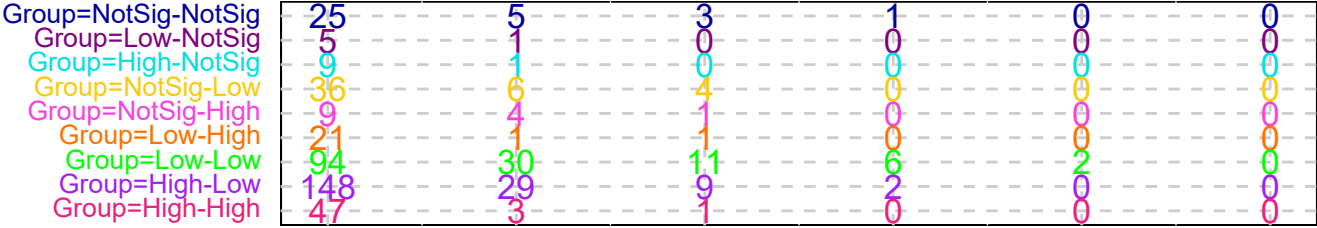
BLCA
All Amplifications & All Deletions
combining signatures



explanatory	beta	HR	L95	U95	p
Low-NotSig	-0.60	0.55	0.07	4.49	0.58
High-NotSig	0.78	2.17	0.68	6.91	0.19
NotSig-Low	-0.25	0.78	0.28	2.15	0.63
NotSig-High	0.06	1.06	0.31	3.66	0.92
Low-High	0.37	1.45	0.48	4.35	0.51
Low-Low	-1.65	0.19	0.07	0.55	0.00
High-Low	-0.03	0.97	0.44	2.18	0.95
High-High	0.97	2.64	1.12	6.23	0.03

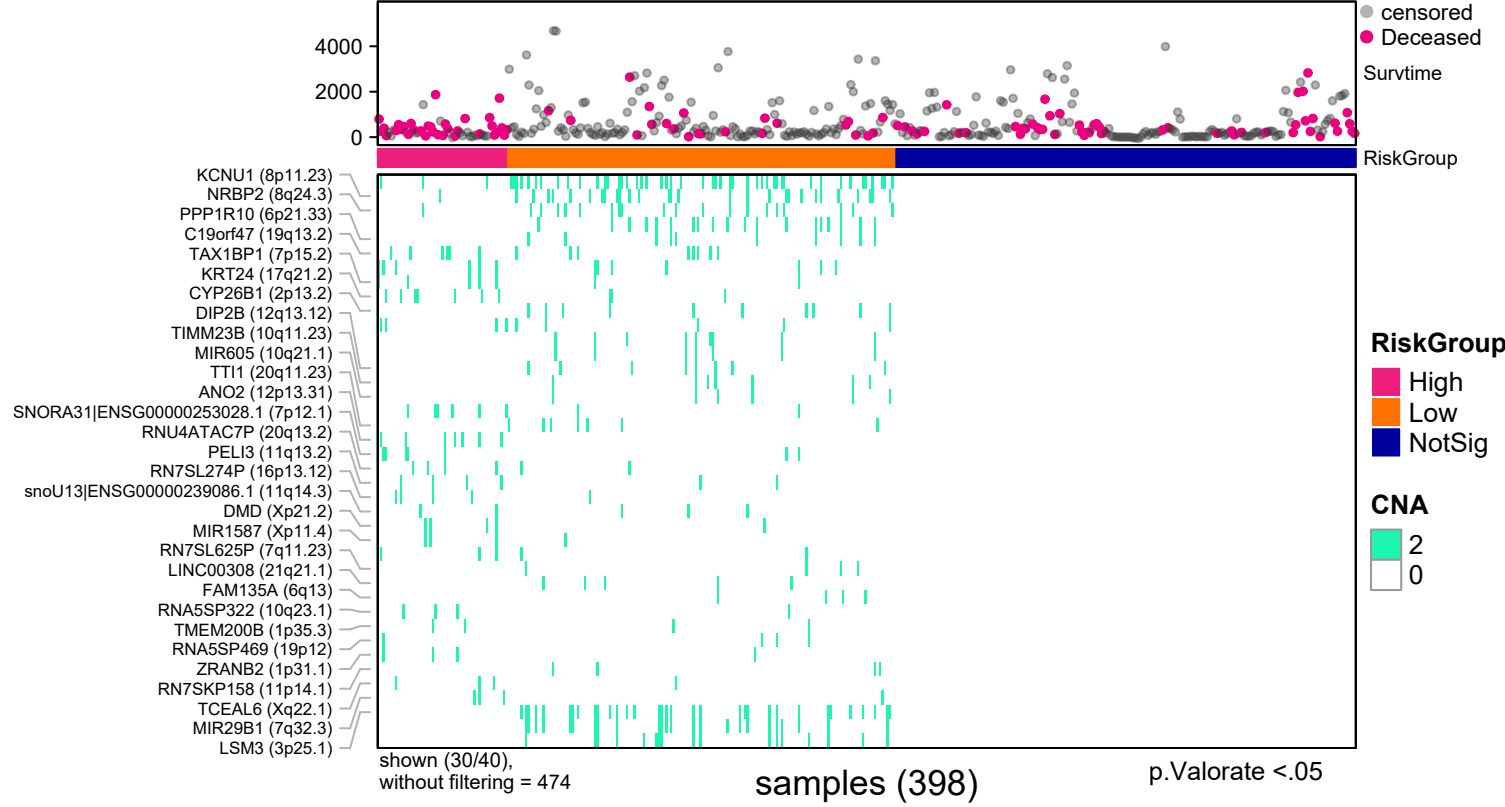
n= 398, number of events =107
Score(logrank) test = p <.0001

Number at risk

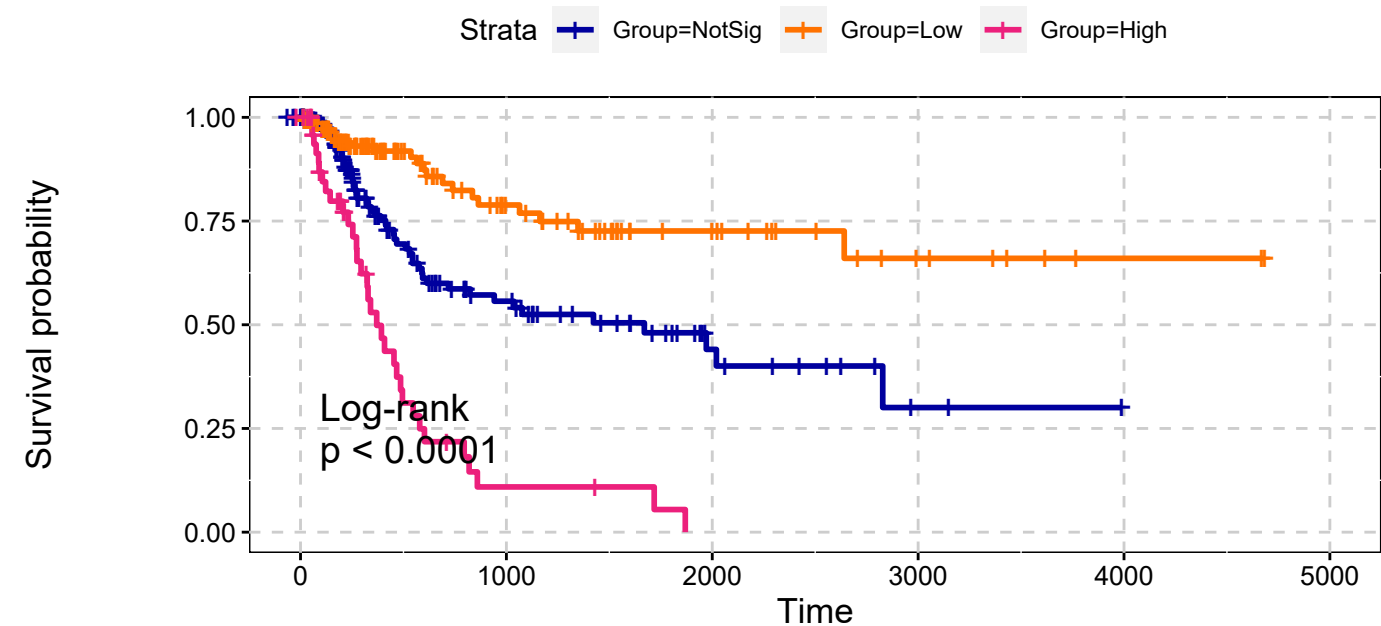


RiskGroup: Amp-Del, p.Valorate <.05

BLCA
Deep Amplifications
Single Data Signature



BLCA
Deep Amplifications
Single Data Signature

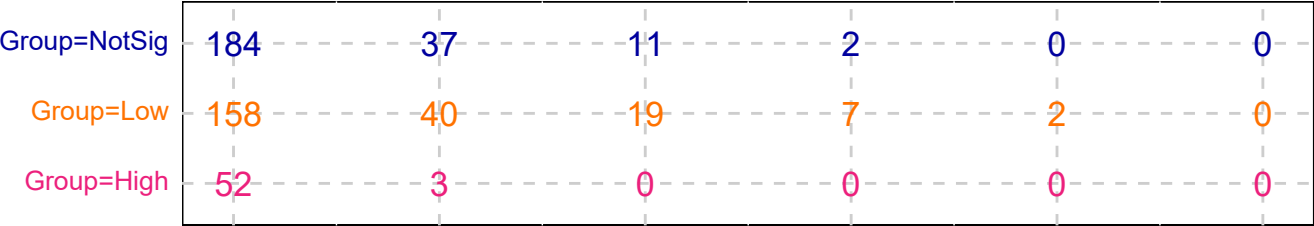


p.Valorate <.05

explanatory	beta	HR	L95	U95	p
Low	-0.94	0.39	0.24	0.64	0.00
High	1.15	3.16	2.03	4.93	0.00

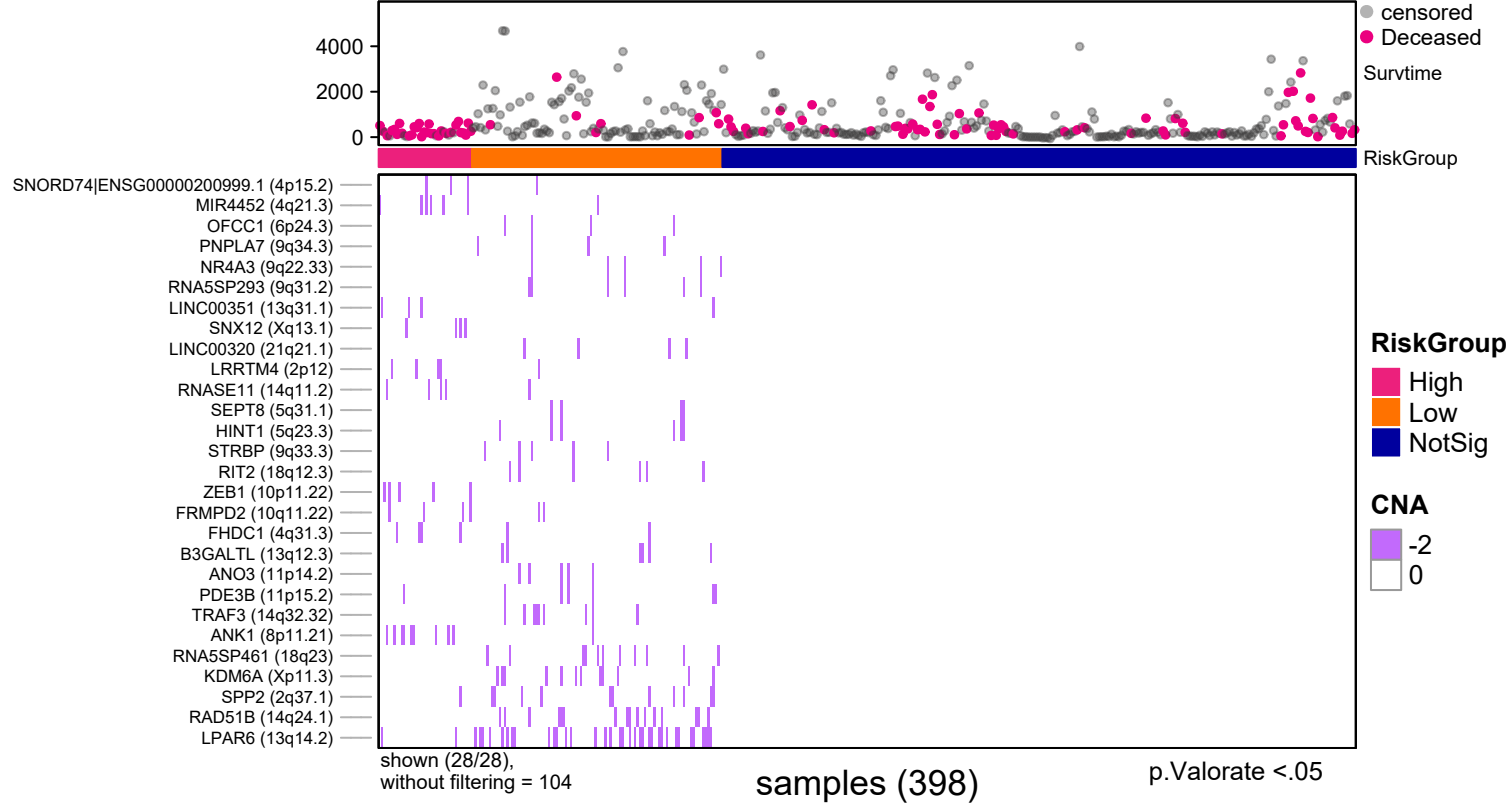
n= 398, number of events =107
Score(logrank) test = p <.0001

Number at risk

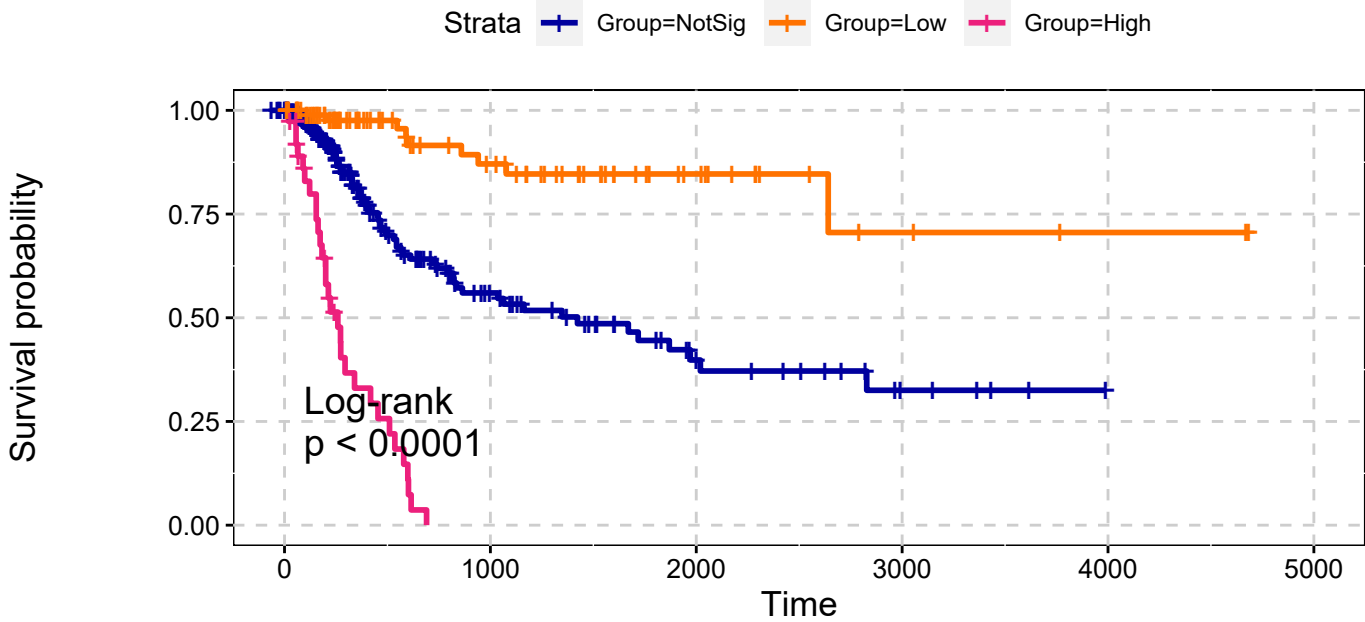


p.Valorate <.05

BLCA
Deep Deletions
Single Data Signature



BLCA
Deep Deletions
Single Data Signature

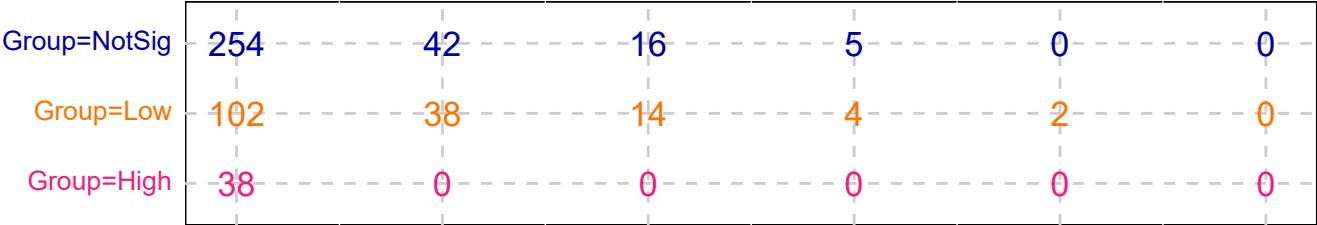


p.Valorate <.05

explanatory	beta	HR	L95	U95	p
Low	-1.55	0.21	0.11	0.42	0.00
High	1.77	5.84	3.70	9.22	0.00

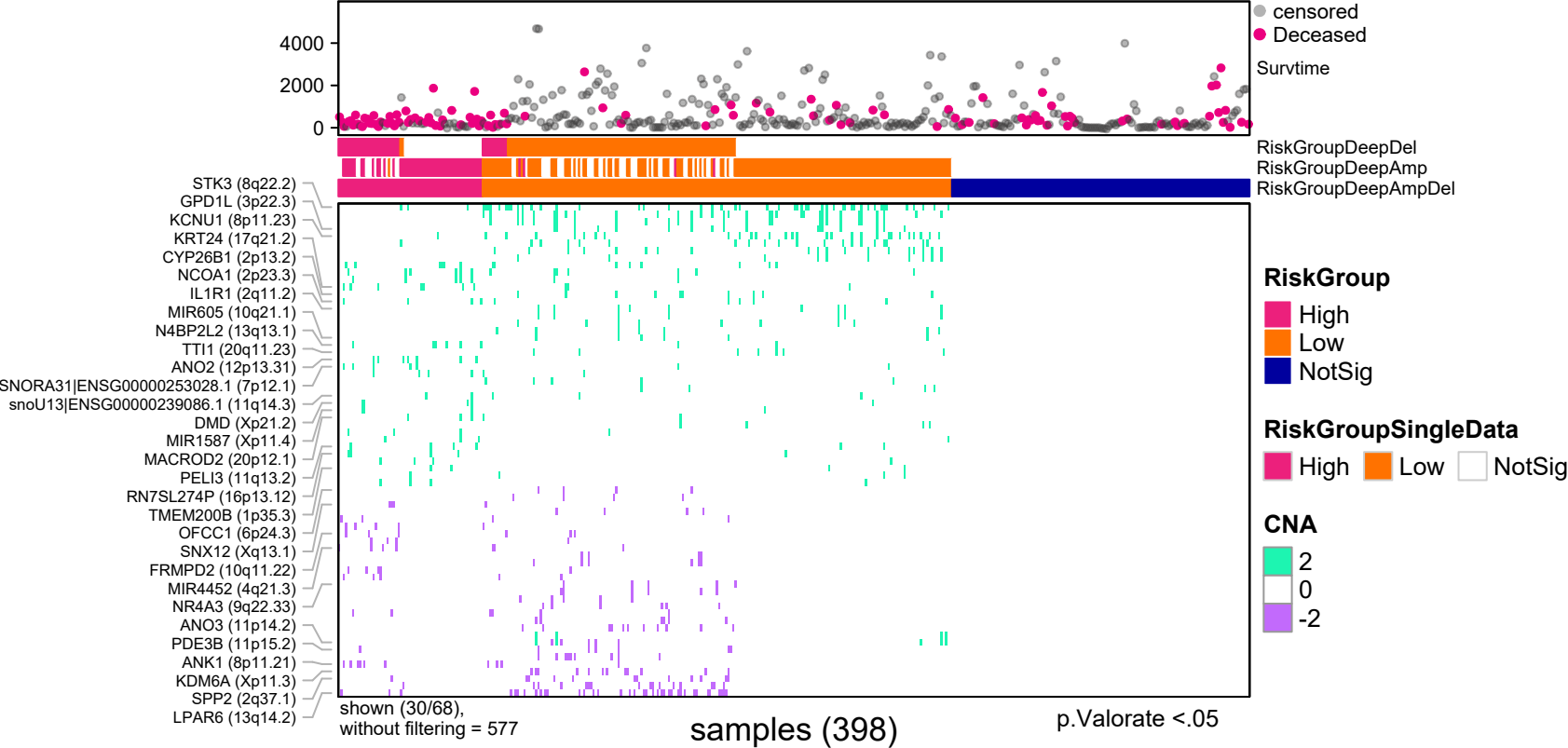
n= 398, number of events =107
Score(logrank) test = p <.0001

Number at risk

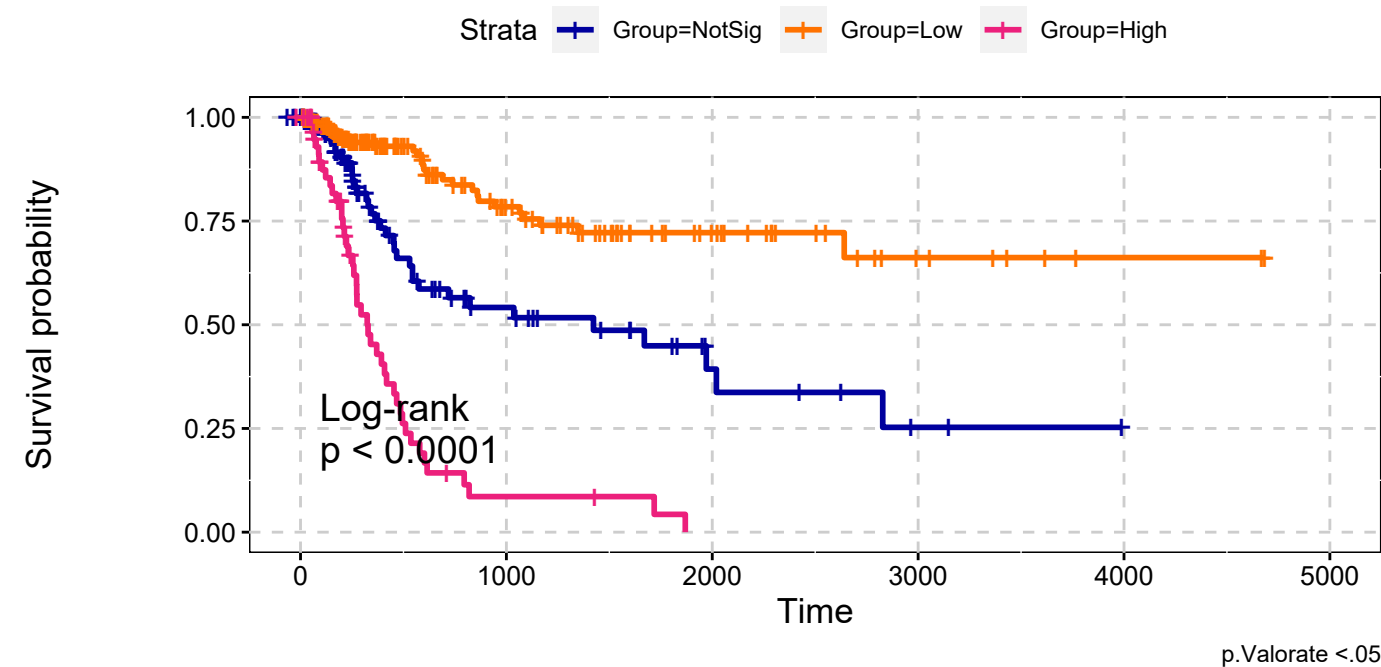


p.Valorate <.05

BLCA
Deep Amplifications & Deep Deletions
Max Sum Significance Signatures

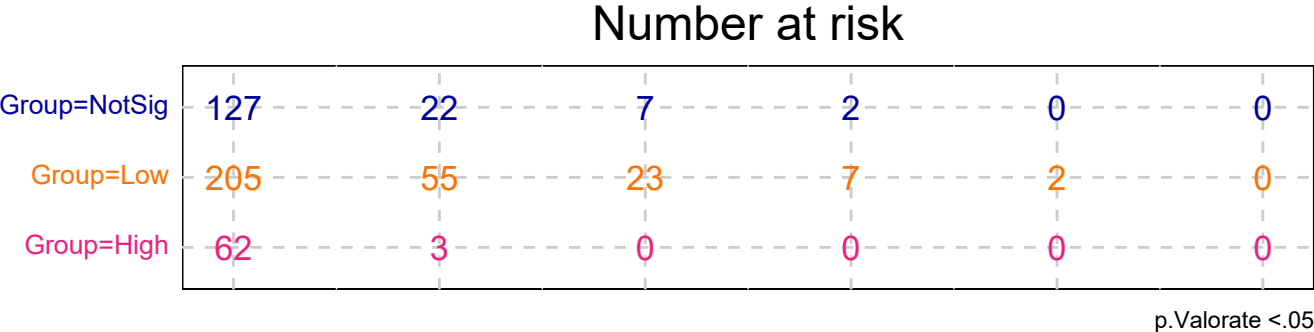


BLCA
Deep Amplifications & Deep Deletions
Max Sum Significance Signatures

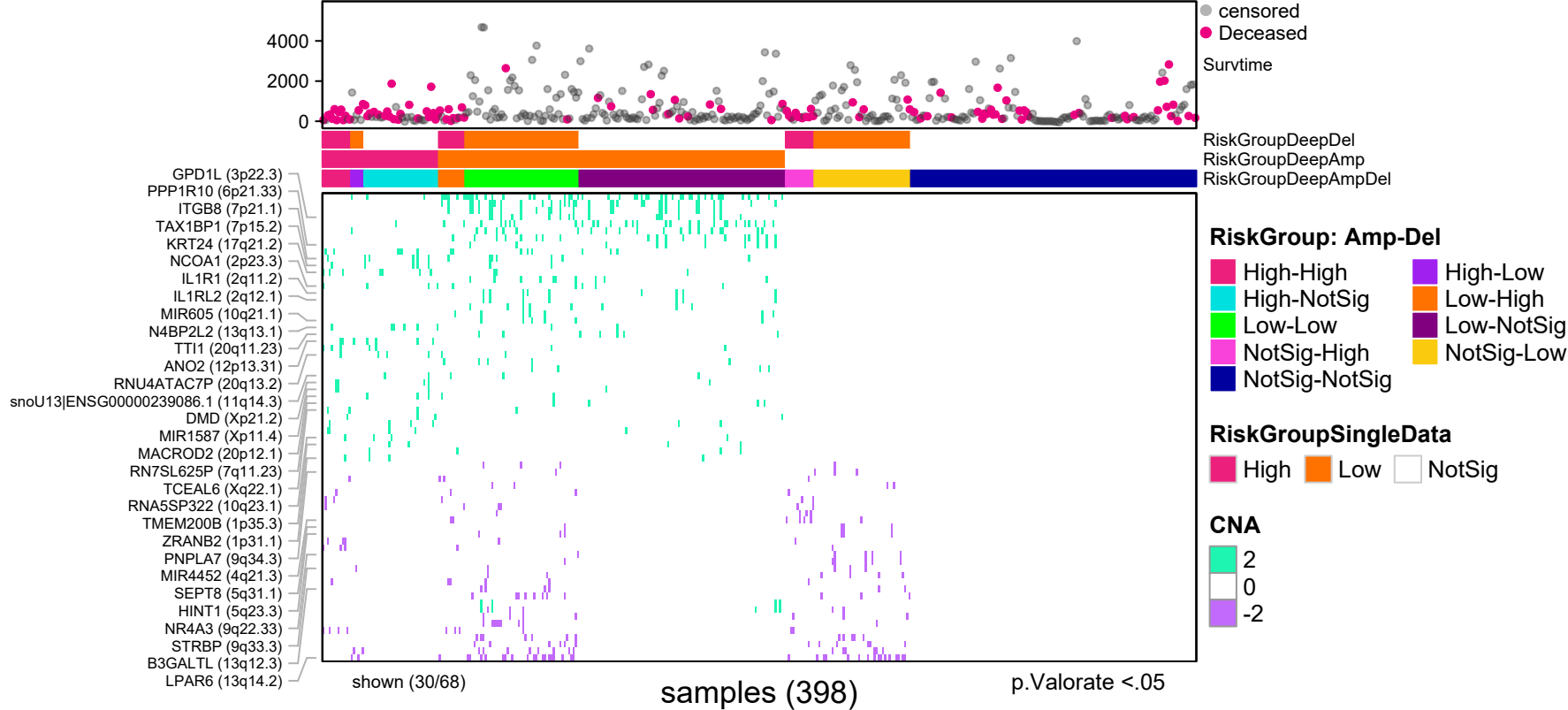


explanatory	beta	HR	L95	U95	p
Low	-1.07	0.34	0.21	0.56	0.00
High	1.24	3.47	2.20	5.46	0.00

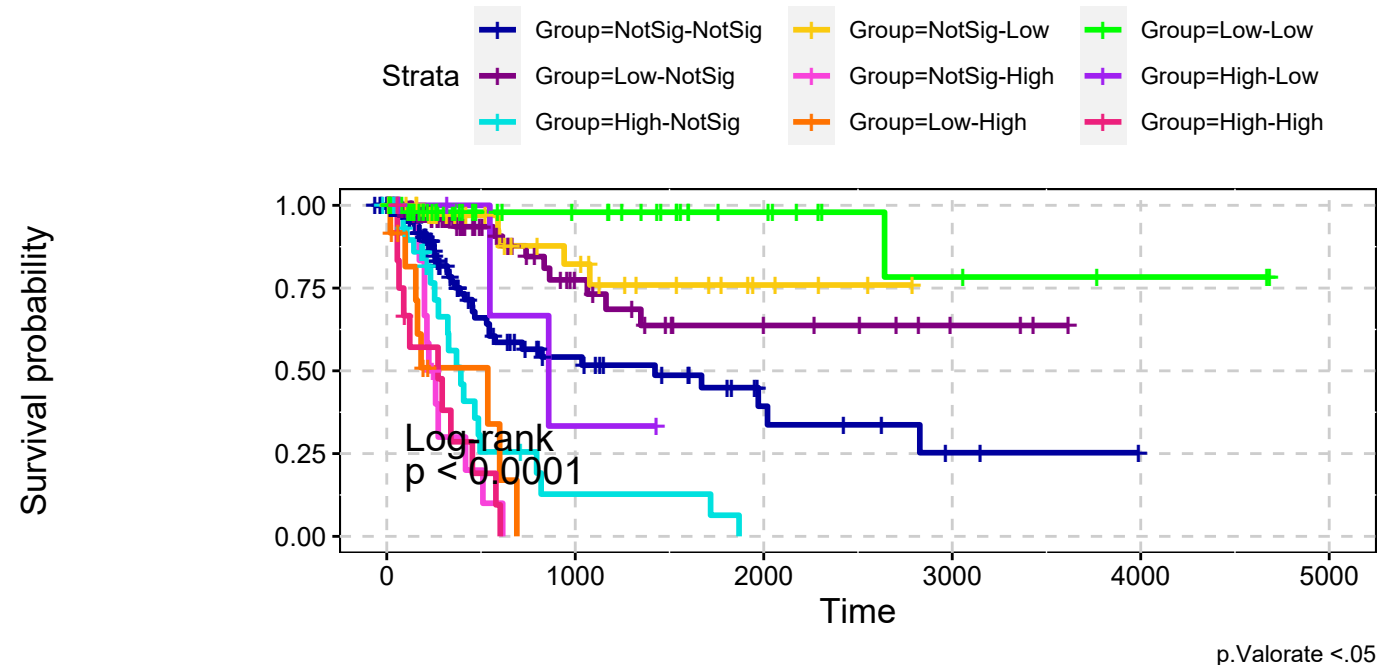
n= 398, number of events =107
Score(logrank) test = p <.0001



BLCA
Deep Amplifications & Deep Deletions
combining signatures



BLCA
Deep Amplifications & Deep Deletions
combining signatures



explanatory	beta	HR	L95	U95	p
Low-NotSig	-1.03	0.36	0.19	0.68	0.00
High-NotSig	1.09	2.98	1.71	5.20	0.00
NotSig-Low	-1.33	0.26	0.10	0.68	0.01
NotSig-High	1.73	5.61	2.78	11.34	0.00
Low-High	1.56	4.76	2.17	10.44	0.00
Low-Low	-2.63	0.07	0.02	0.30	0.00
High-Low	-0.02	0.98	0.24	4.09	0.98
High-High	1.84	6.27	3.12	12.62	0.00

n= 398, number of events =107
Score(logrank) test = p <.0001

