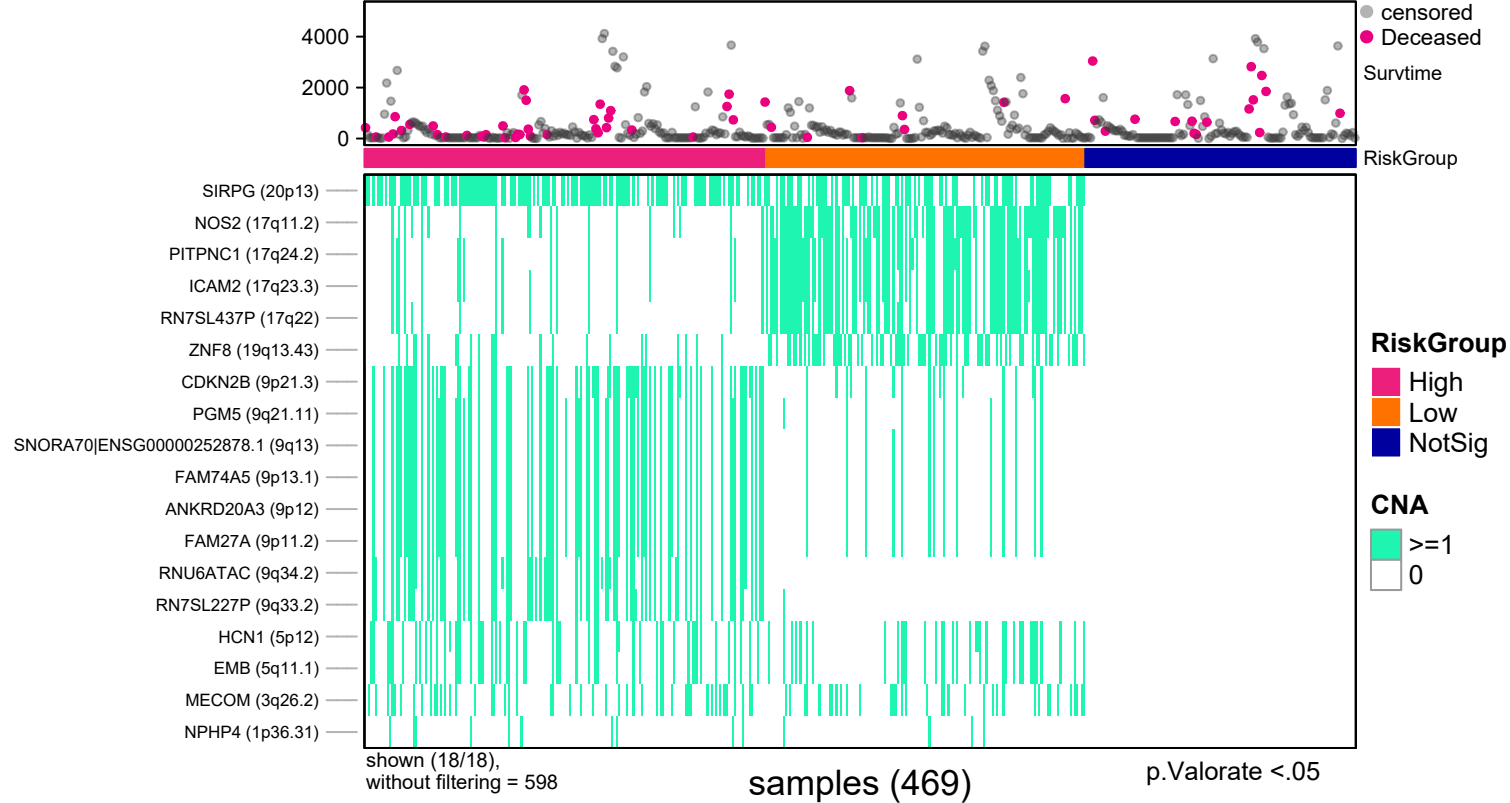
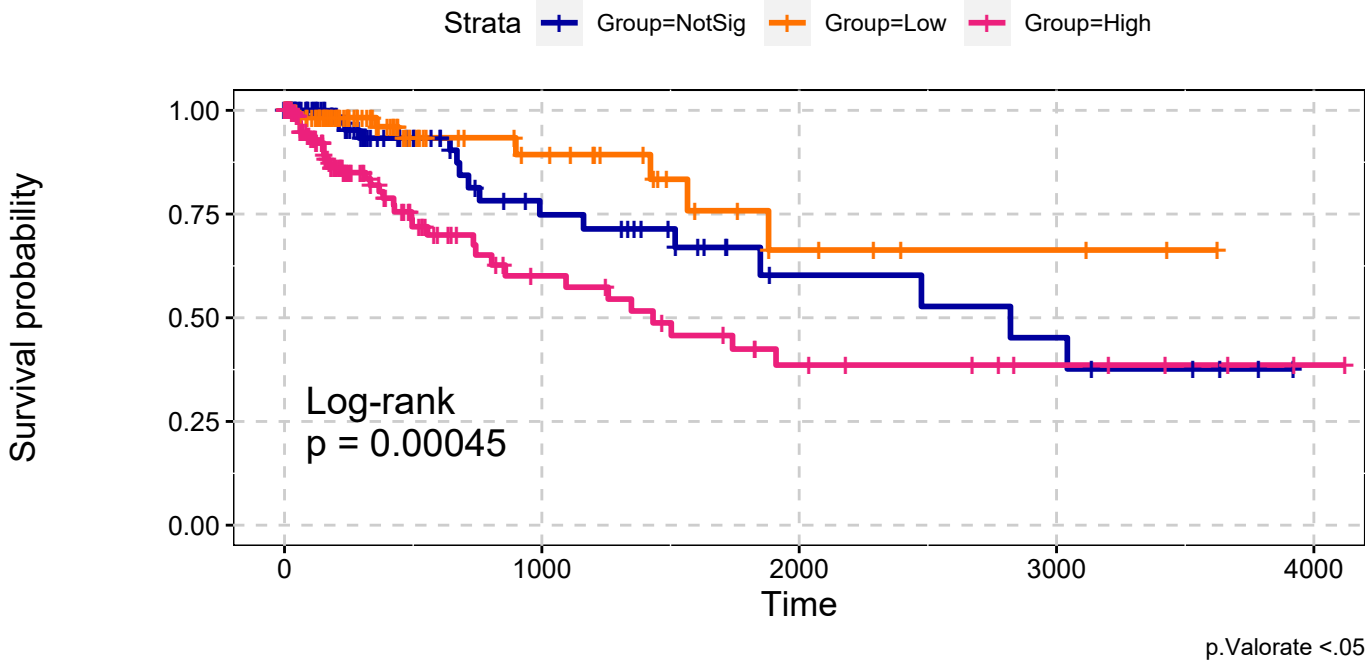


COADREAD  
All Amplifications  
Single Data Signature

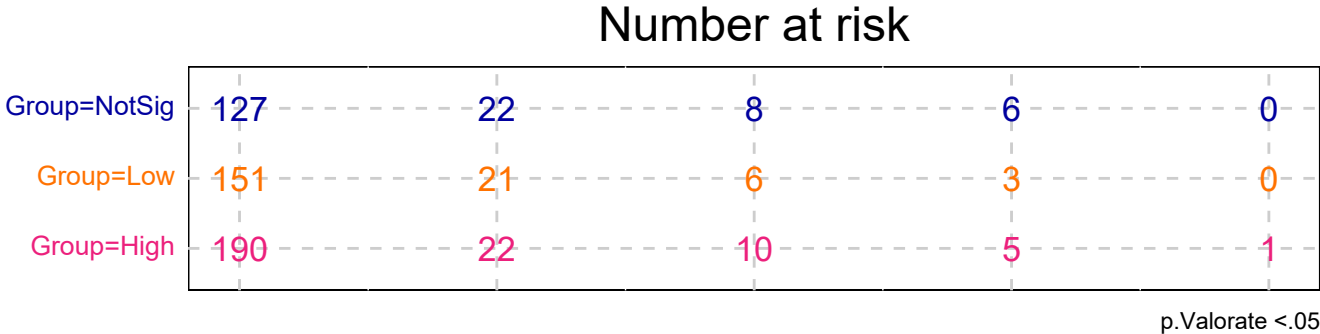


COADREAD  
All Amplifications  
Single Data Signature

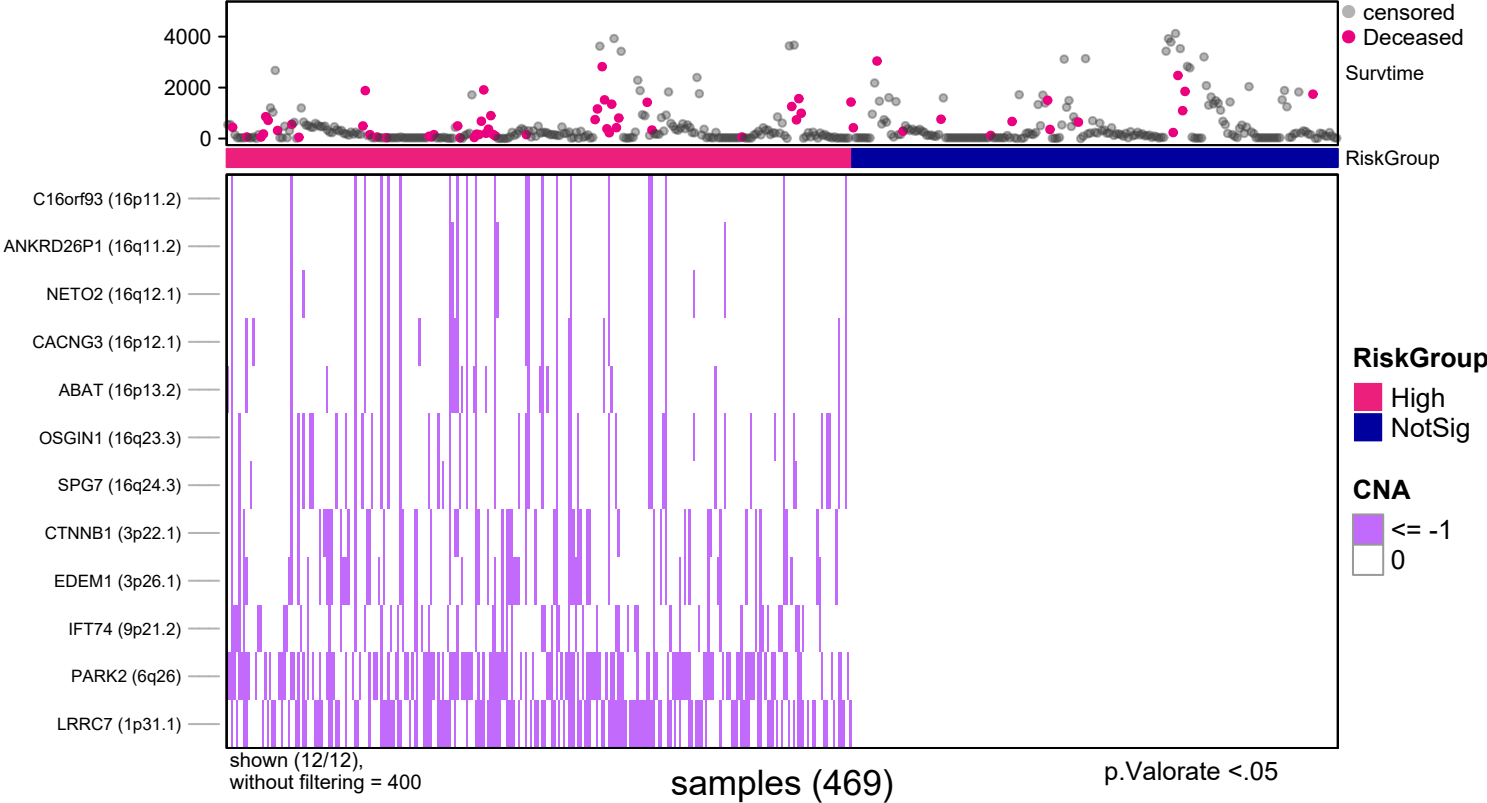


explanatory	beta	HR	L95	U95	p
Low	-0.63	0.54	0.23	1.25	0.15
High	0.69	2.00	1.11	3.60	0.02

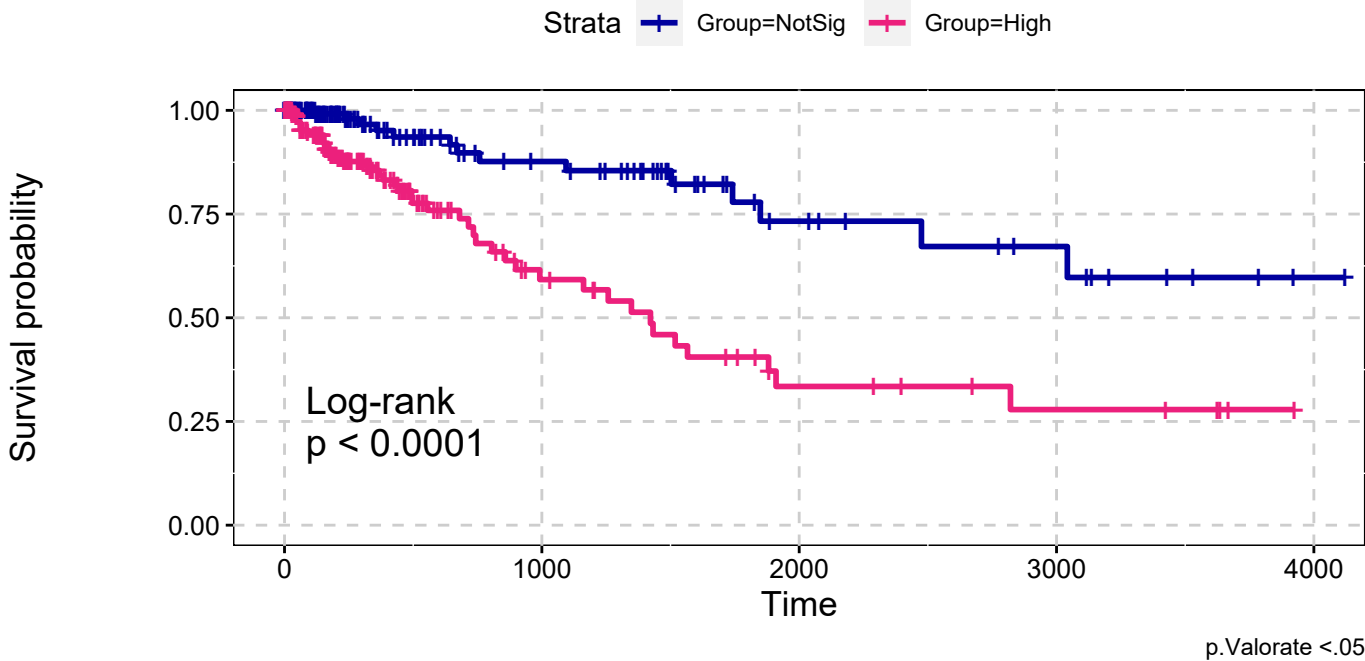
n= 469, number of events =61  
Score(logrank) test = 0



COADREAD  
All Deletions  
Single Data Signature

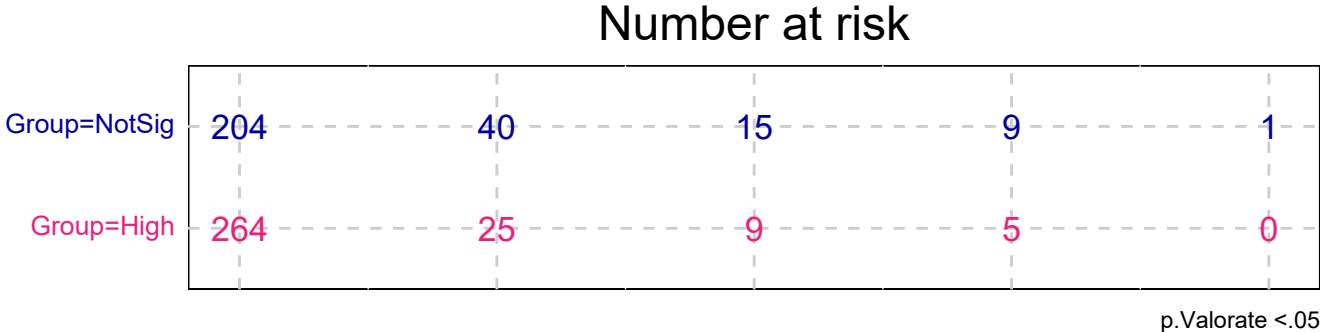


COADREAD  
All Deletions  
Single Data Signature

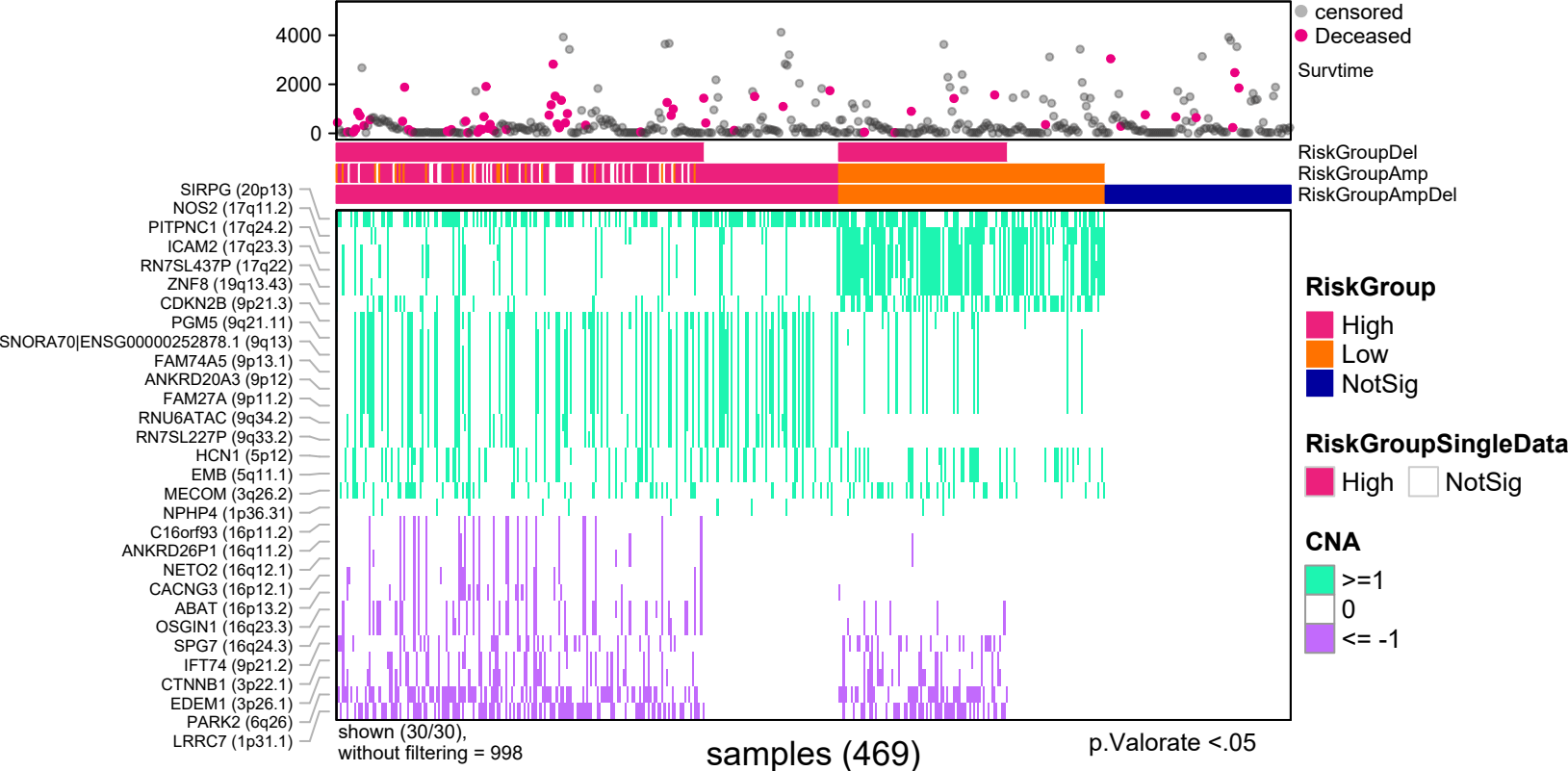


explanatory	beta	HR	L95	U95	p
High	1.30	3.66	2.00	6.67	0.00

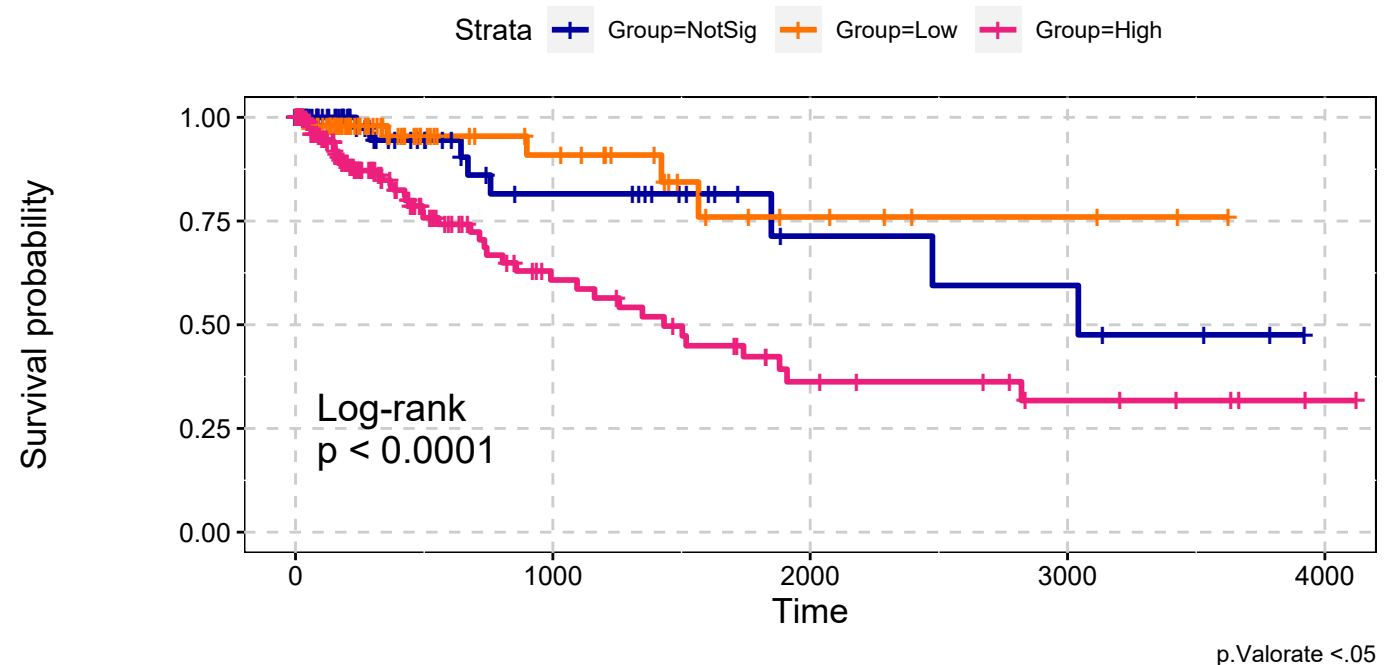
n= 469, number of events =61  
Score(logrank) test =  $p < .0001$



COADREAD  
All Amplifications & All Deletions  
Max Sum Significance Signatures

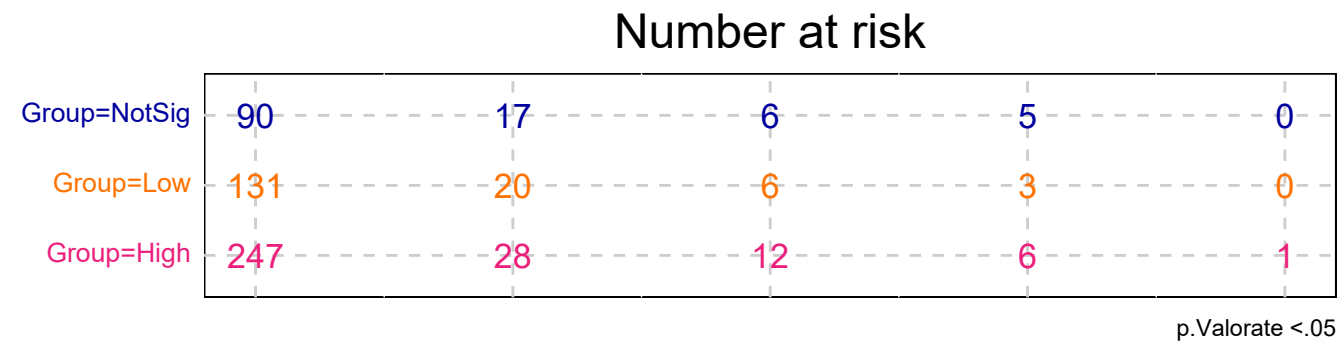


COADREAD  
All Amplifications & All Deletions  
Max Sum Significance Signatures

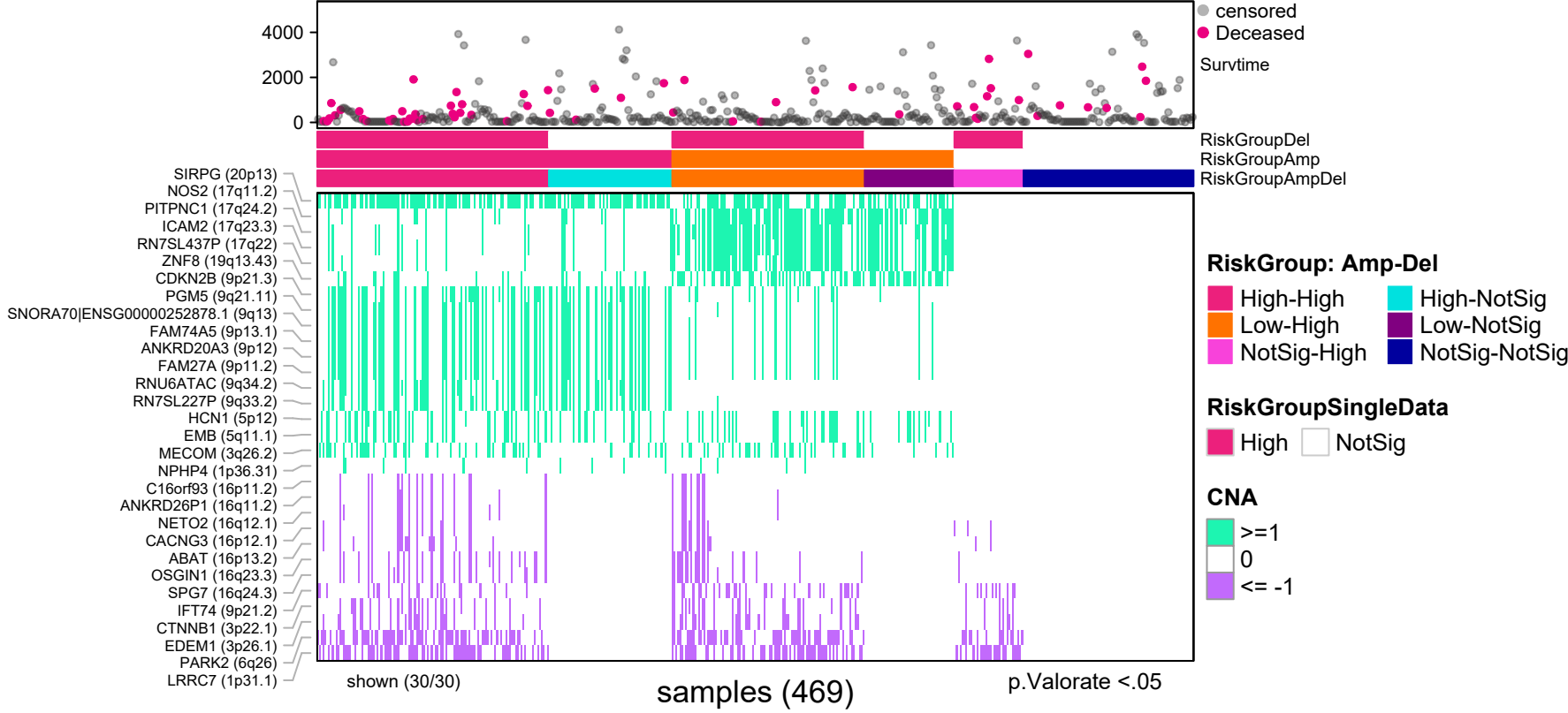


explanatory	beta	HR	L95	U95	p
Low	-0.43	0.65	0.23	1.89	0.43
High	1.02	2.78	1.31	5.88	0.01

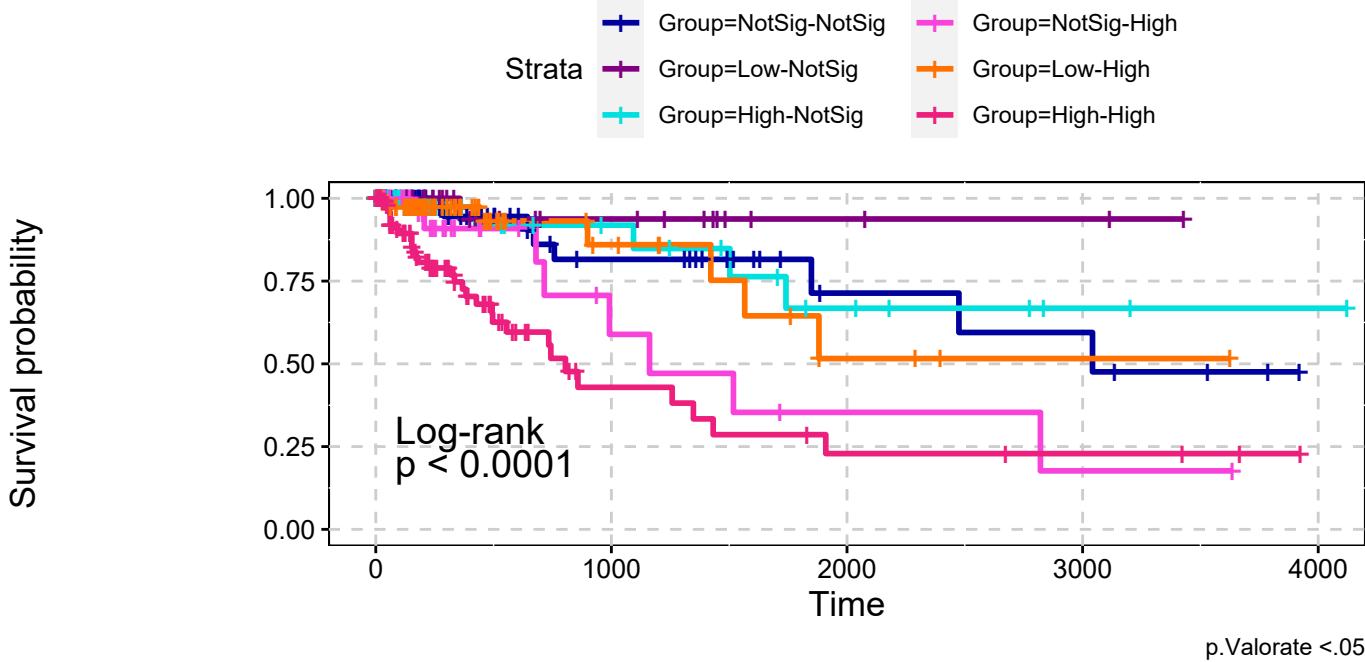
n= 469, number of events =61  
Score(logrank) test = p <.0001



COADREAD  
All Amplifications & All Deletions  
combining signatures



COADREAD  
All Amplifications & All Deletions  
combining signatures



explanatory	beta	HR	L95	U95	p
Low-NotSig	-1.39	0.25	0.03	1.99	0.19
High-NotSig	-0.12	0.89	0.29	2.72	0.84
NotSig-High	0.97	2.63	0.99	7.03	0.05
Low-High	0.13	1.14	0.41	3.15	0.80
High-High	1.52	4.57	2.10	9.97	0.00

n= 469, number of events =61  
Score(logrank) test = p <.0001

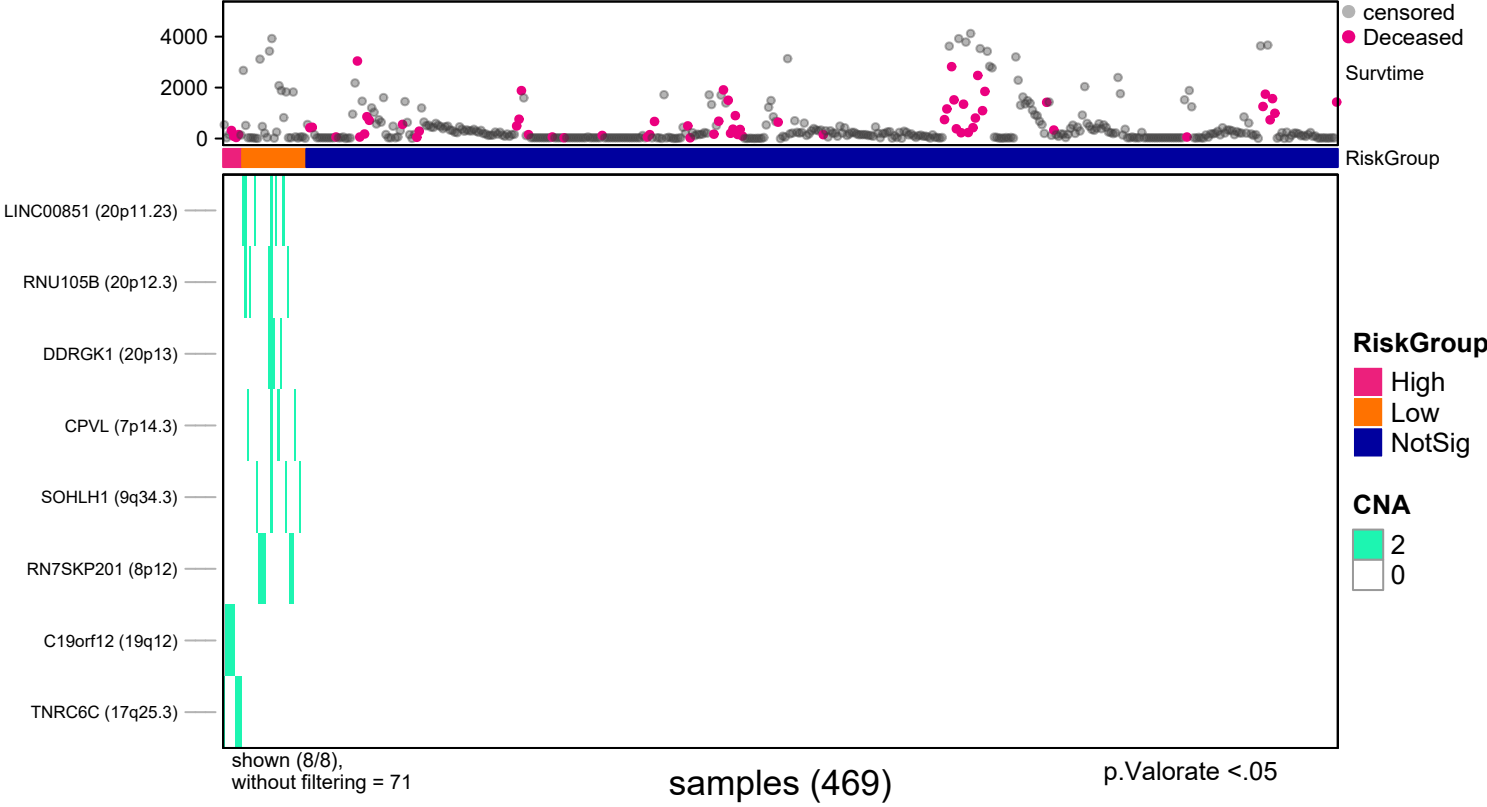
Number at risk

Group=NotSig-NotSig	90	17	6	5	0
Group=Low-NotSig	48	10	3	2	0
Group=High-NotSig	66	13	6	2	1
Group=NotSig-High	37	5	2	1	0
Group=Low-High	103	11	3	1	0
Group=High-High	124	9	4	3	0

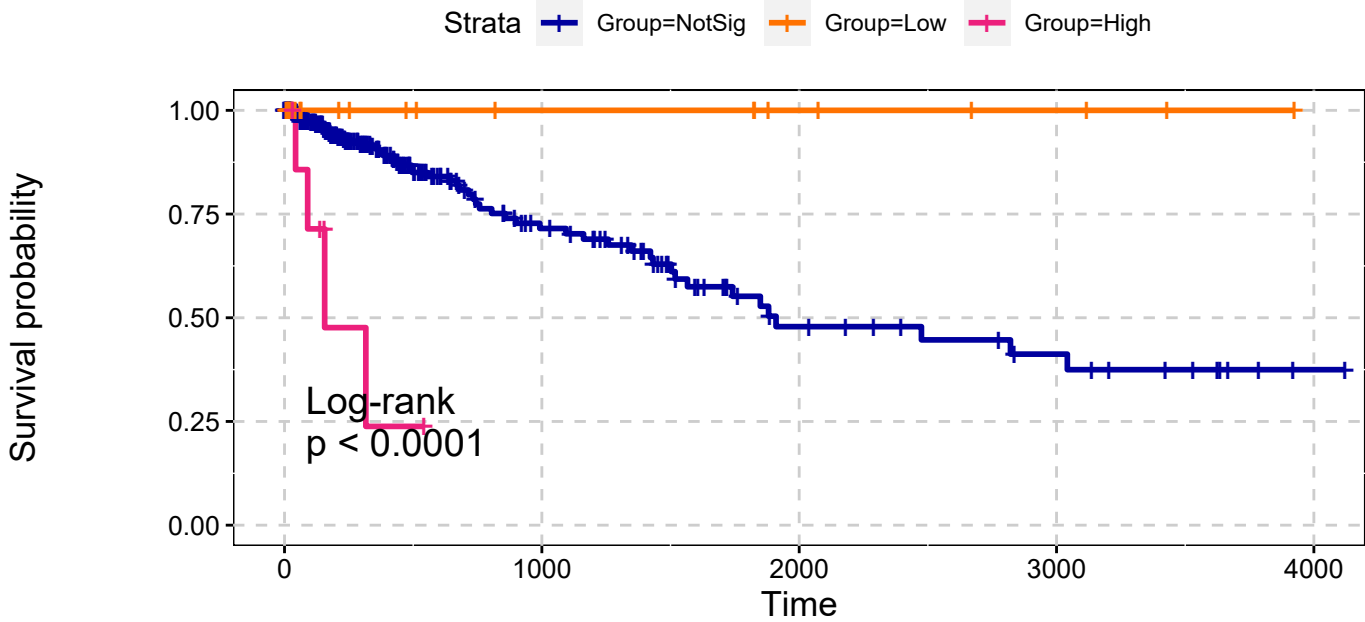
RiskGroup: Amp-Del, p.Valorate <.05



COADREAD  
Deep Amplifications  
Single Data Signature



COADREAD  
Deep Amplifications  
Single Data Signature

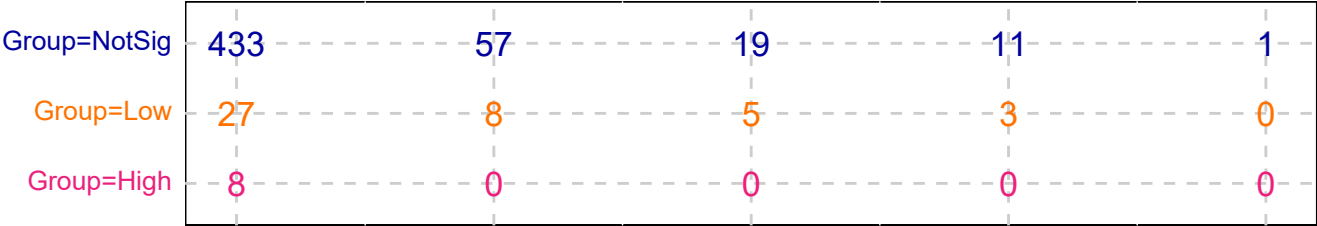


p.Valorate <.05

explanatory	beta	HR	L95	U95	p
Low	-17.84	0.00	0.00	Inf	0.99
High	2.26	9.61	3.35	27.54	0.00

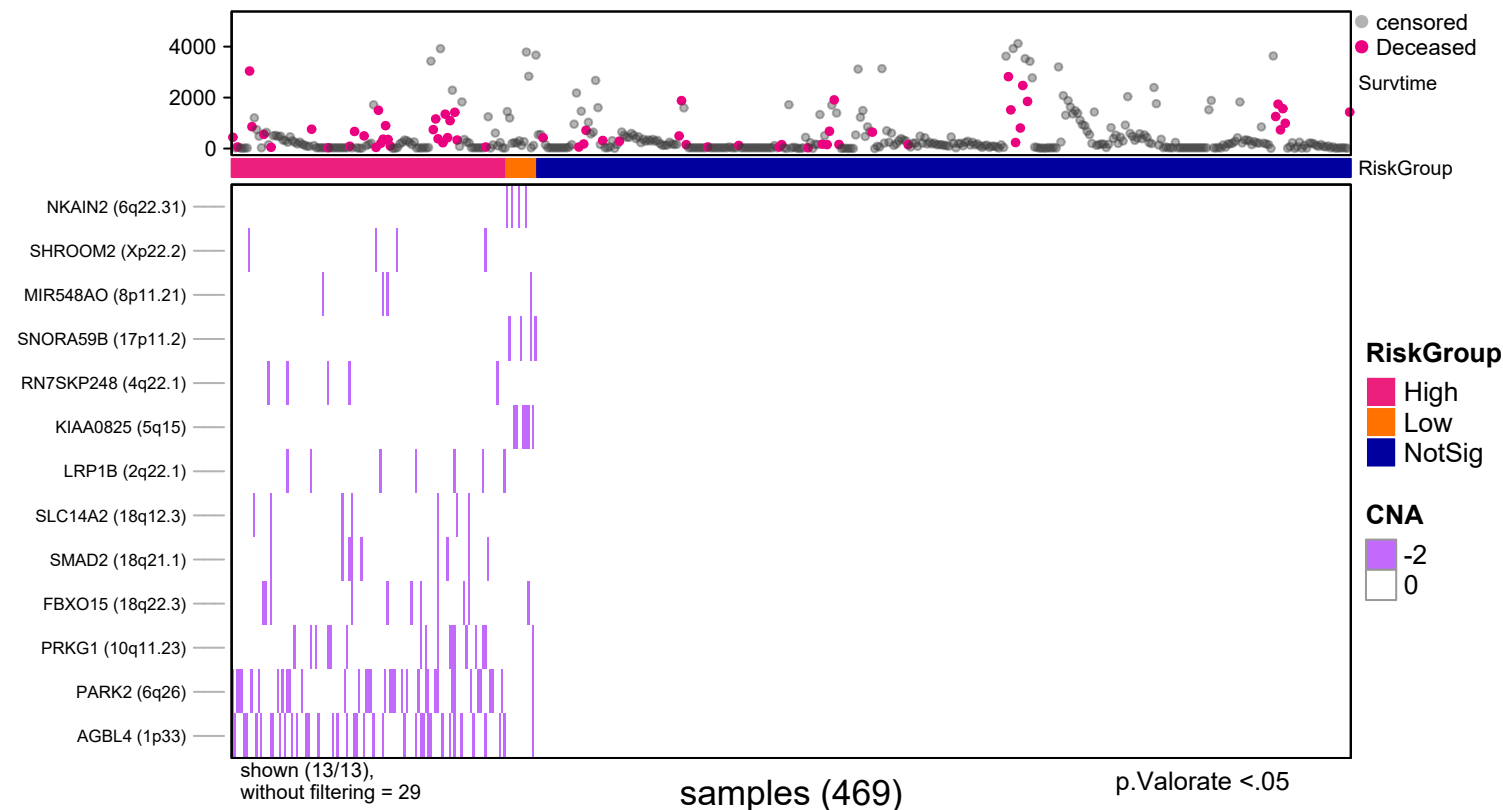
n= 469, number of events =61  
Score(logrank) test = p <.0001

Number at risk

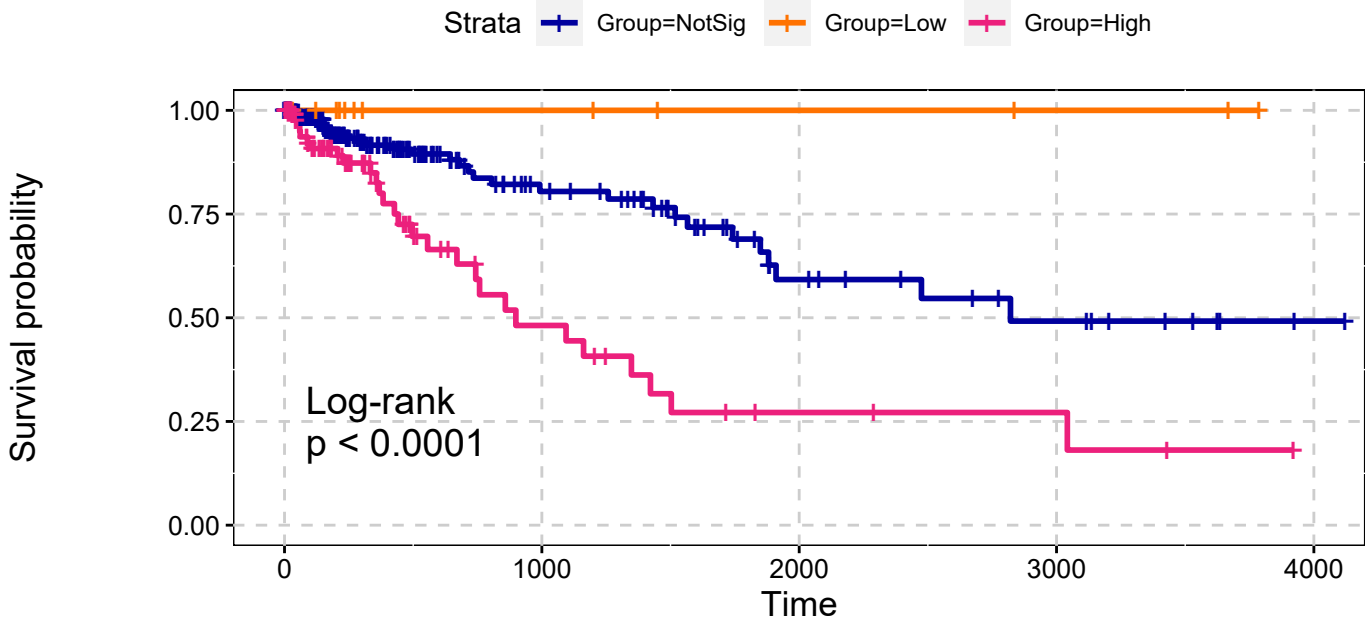


p.Valorate <.05

COADREAD  
Deep Deletions  
Single Data Signature



COADREAD  
Deep Deletions  
Single Data Signature

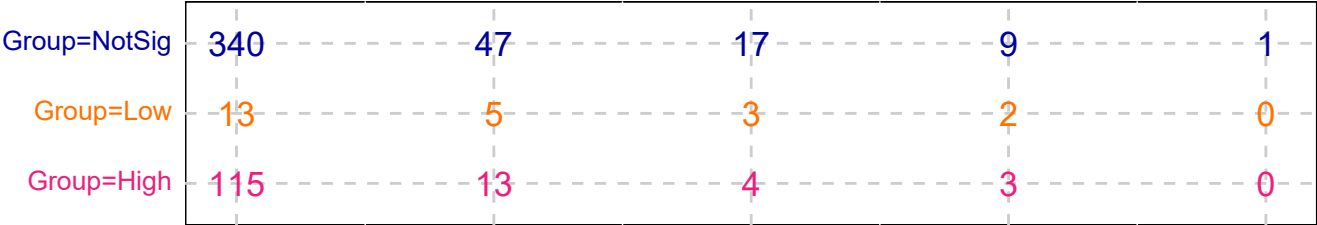


explanatory	beta	HR	L95	U95	p
Low	-16.99	0.00	0.00	Inf	1.00
High	1.07	2.91	1.75	4.82	0.00

n= 469, number of events =61  
Score(logrank) test = p <.0001

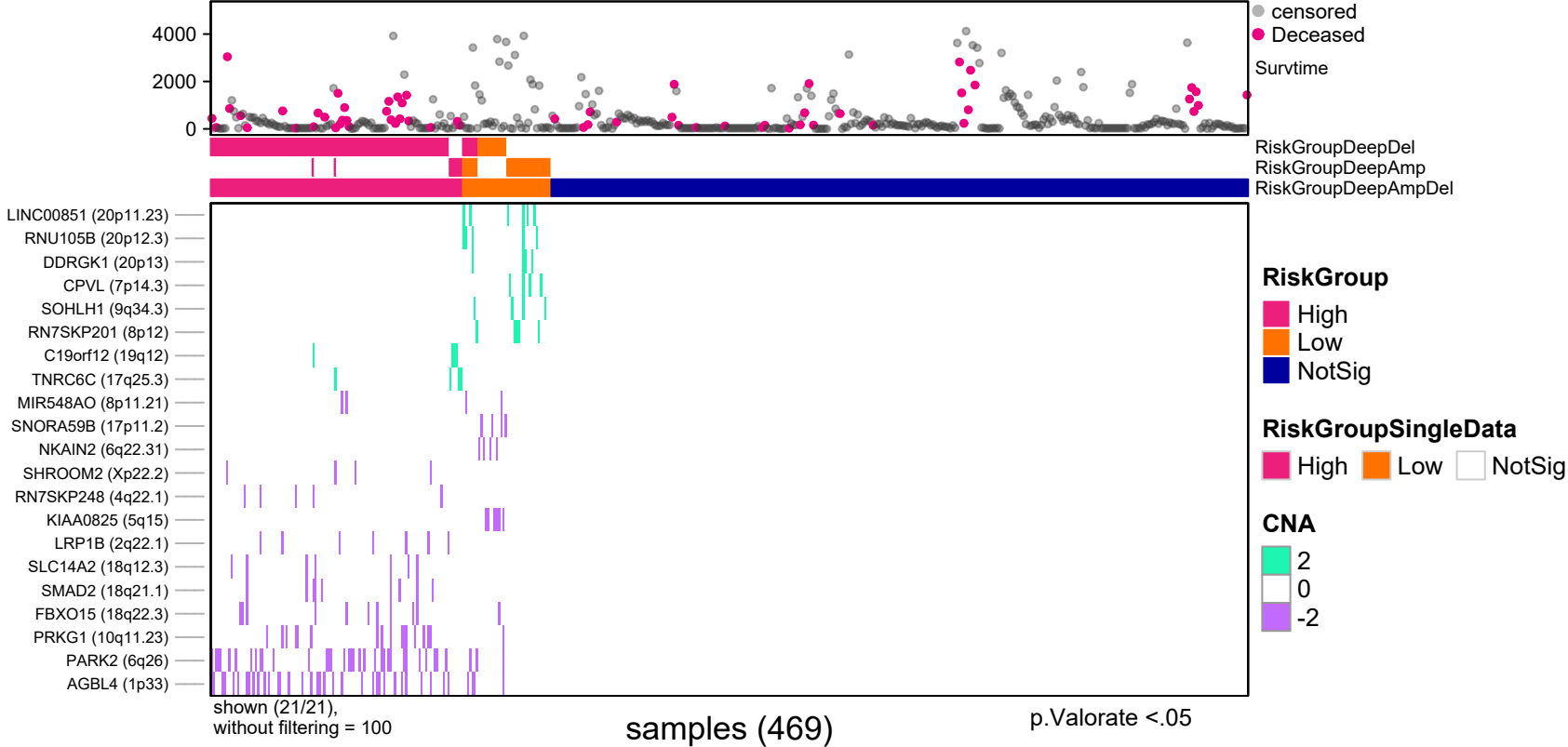
p.Valorate <.05

Number at risk

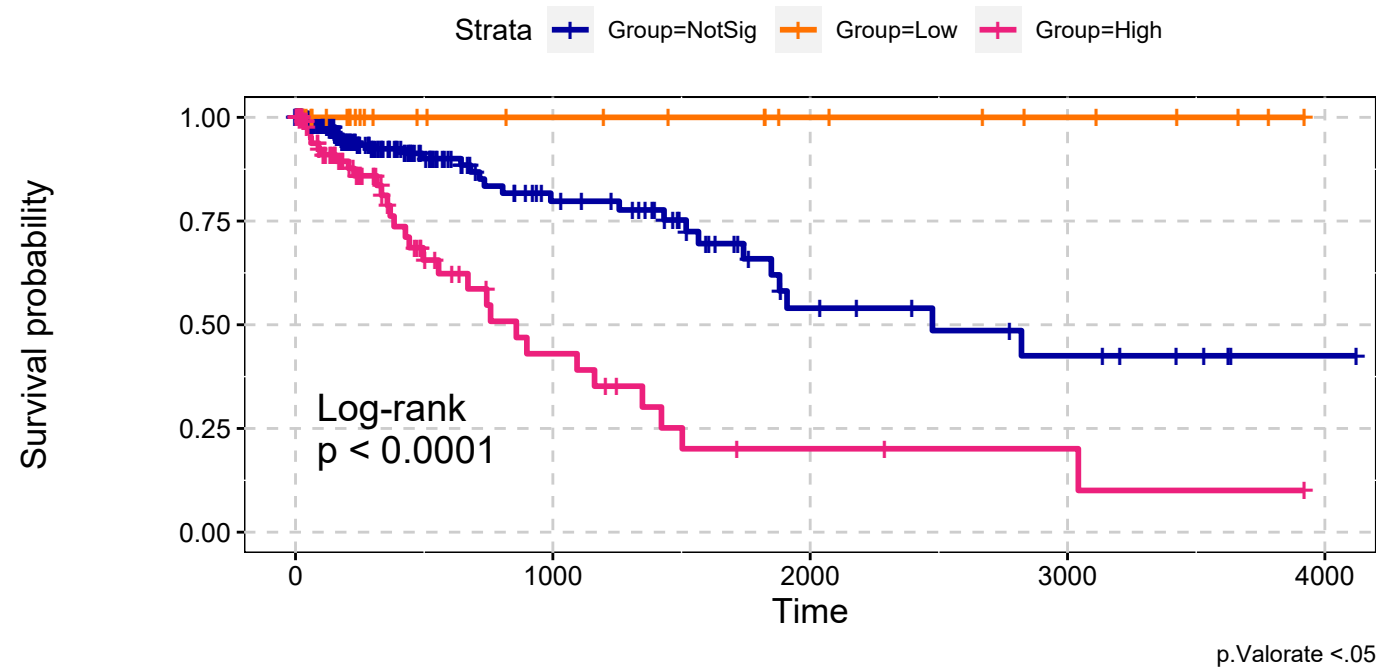


p.Valorate <.05

COADREAD  
Deep Amplifications & Deep Deletions  
Max Sum Significance Signatures

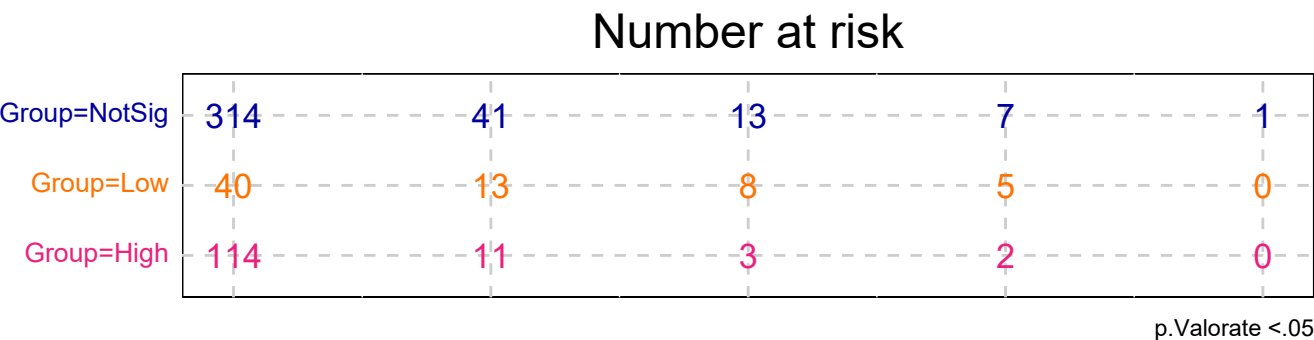


COADREAD  
Deep Amplifications & Deep Deletions  
Max Sum Significance Signatures

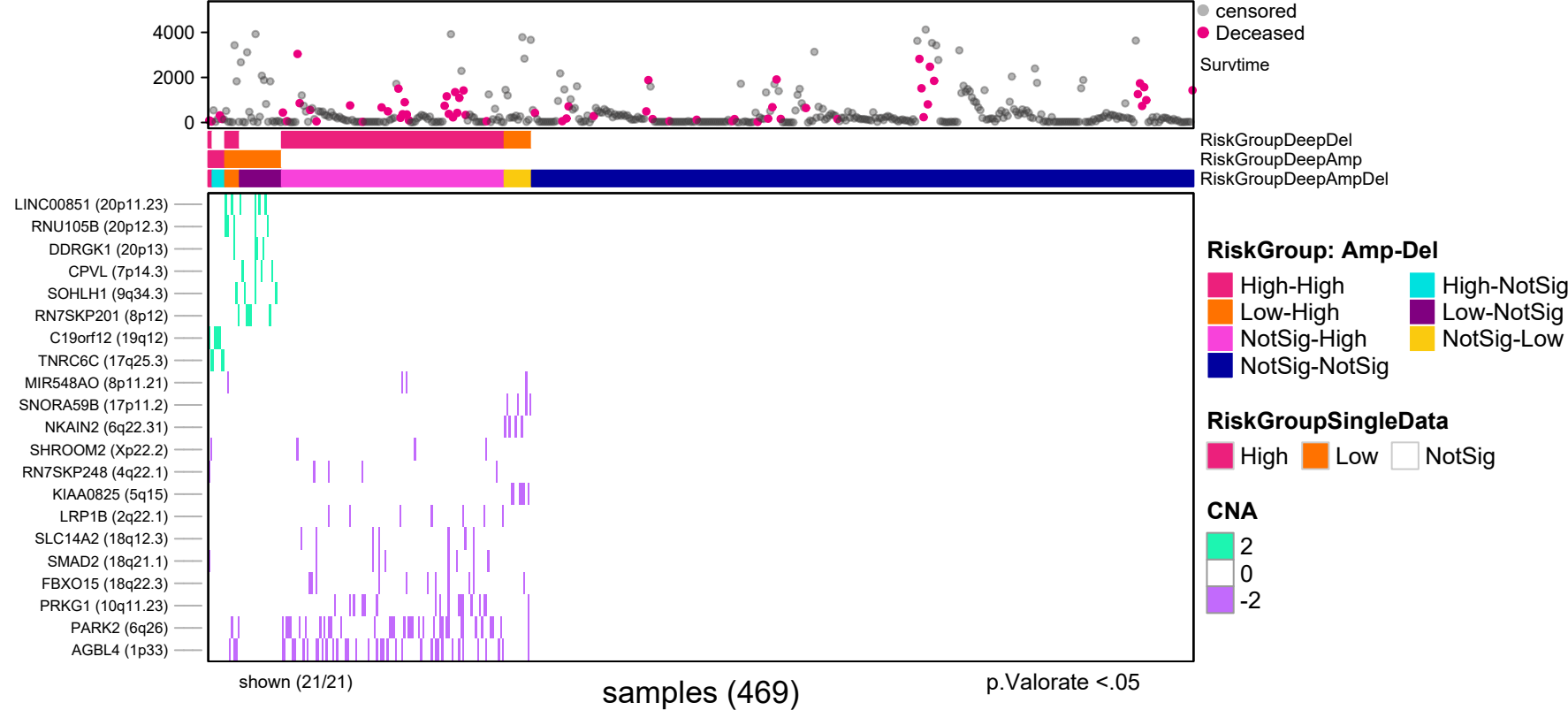


explanatory	beta	HR	L95	U95	p
Low	-18.32	0.00	0.00	Inf	1.00
High	1.19	3.29	1.98	5.46	0.00

n= 469, number of events =61  
Score(logrank) test = p <.0001

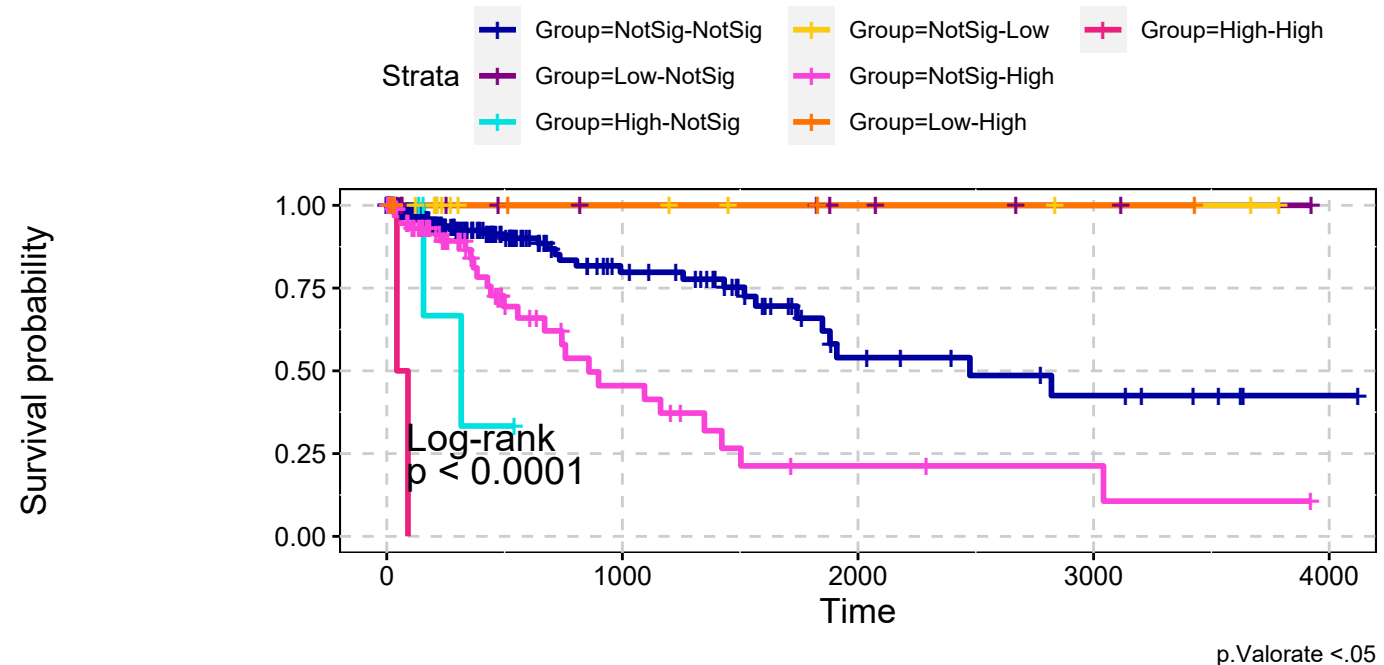


COADREAD  
Deep Amplifications & Deep Deletions  
combining signatures



# COADREAD

## Deep Amplifications & Deep Deletions combining signatures



explanatory	beta	HR	L95	U95	p
Low-NotSig	-14.84	0.00	0.00	Inf	0.99
High-NotSig	2.02	7.56	1.80	31.69	0.01
NotSig-Low	-14.84	0.00	0.00	Inf	0.99
NotSig-High	1.09	2.97	1.78	4.95	0.00
Low-High	-14.84	0.00	0.00	Inf	0.99
High-High	4.55	94.30	19.88	447.36	0.00

n= 469, number of events =61  
Score(logrank) test = p <.0001

### Number at risk

Group=NotSig-NotSig	314	41	13	7	1
Group=Low-NotSig	20	6	4	2	0
Group=High-NotSig	6	0	0	0	0
Group=NotSig-Low	13	5	3	2	0
Group=NotSig-High	106	11	3	2	0
Group=Low-High	7	2	1	1	0
Group=High-High	2	0	0	0	0

RiskGroup: Amp-Del, p.Valorate <.05