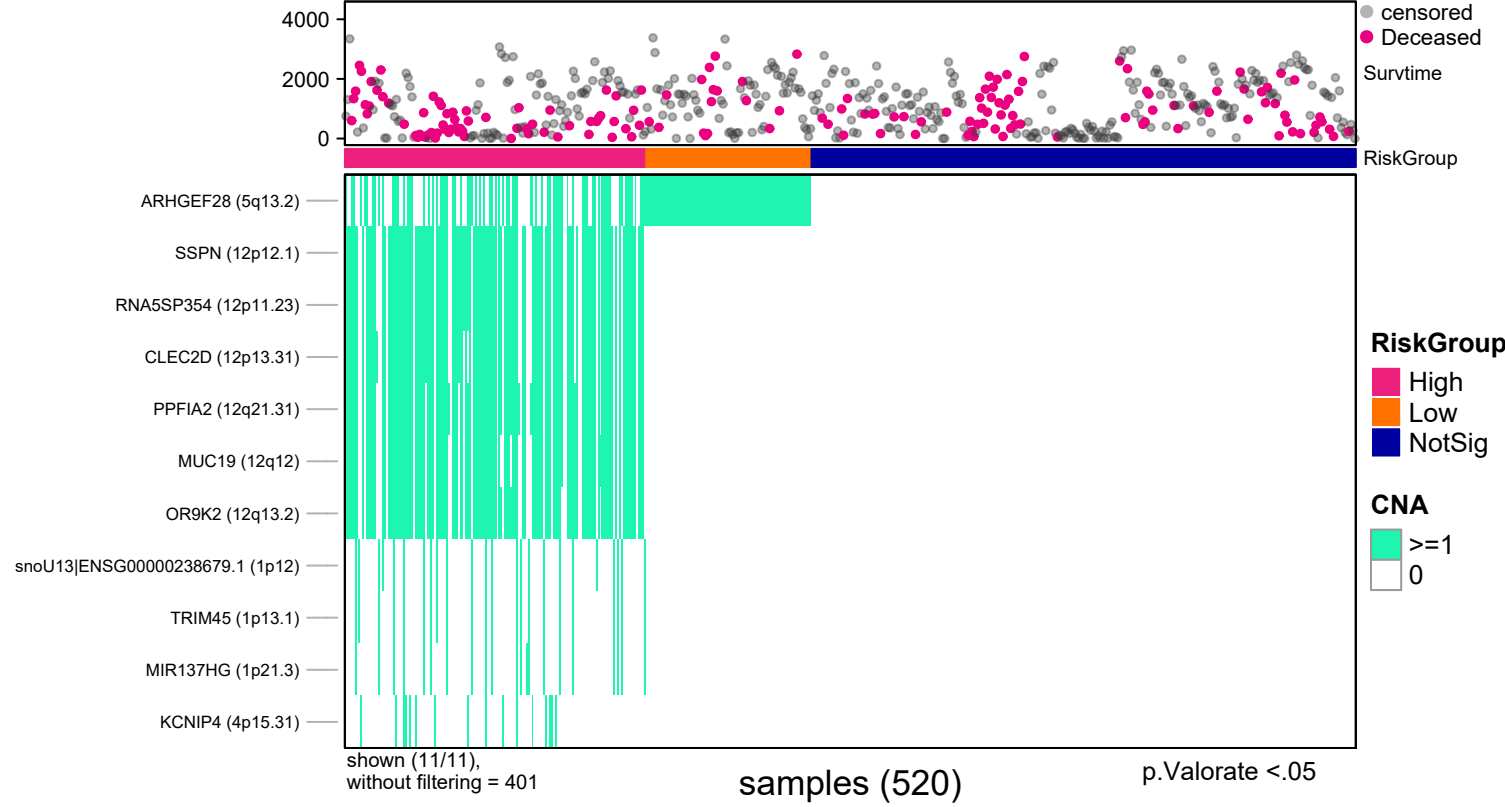
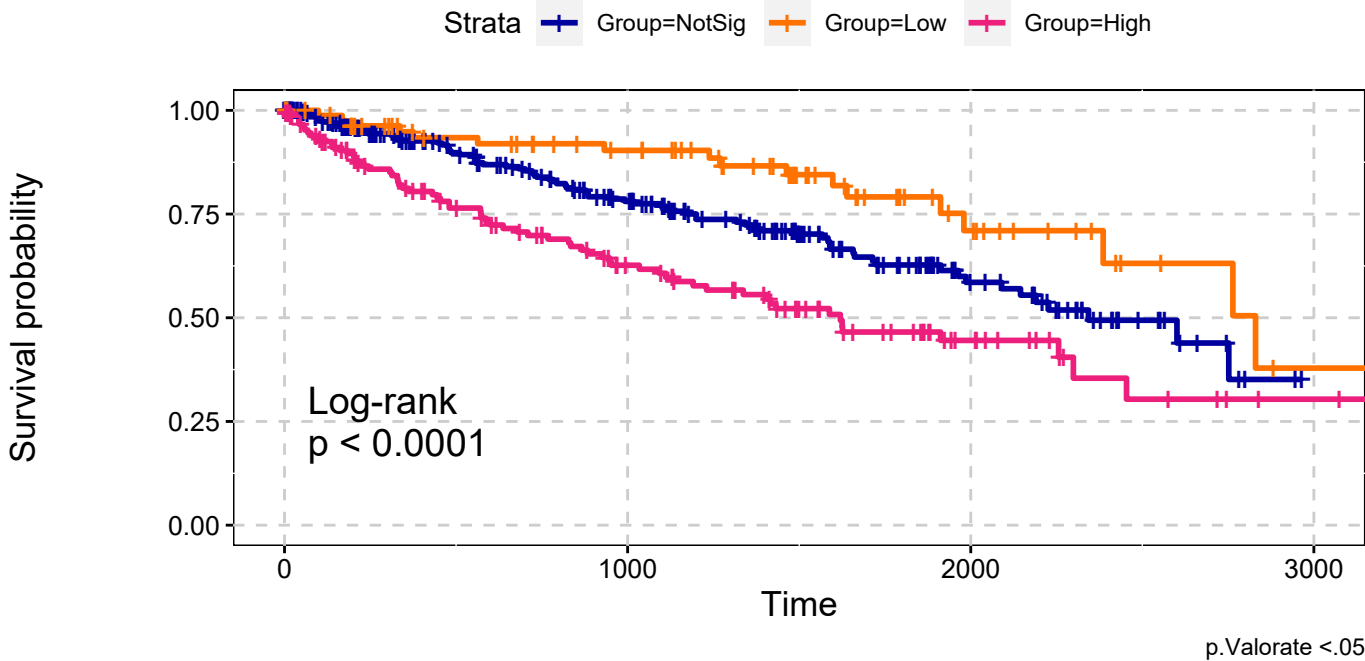


KIRC
All Amplifications
Single Data Signature

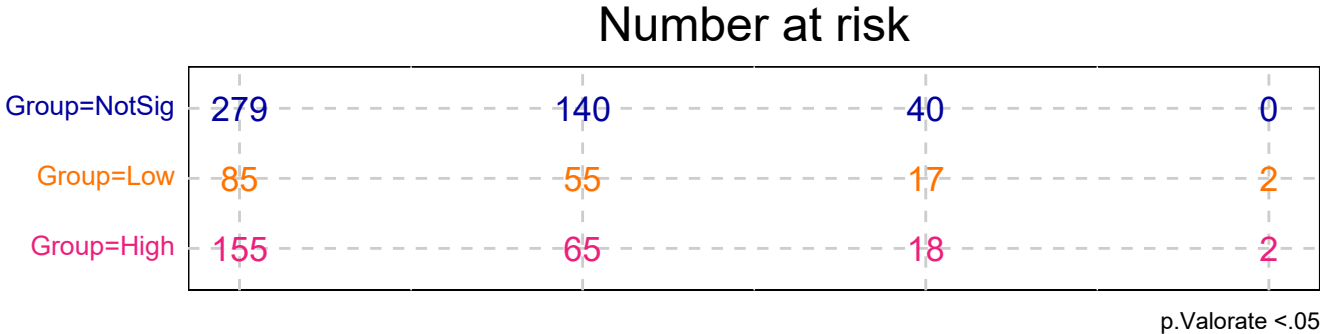


KIRC
All Amplifications
Single Data Signature

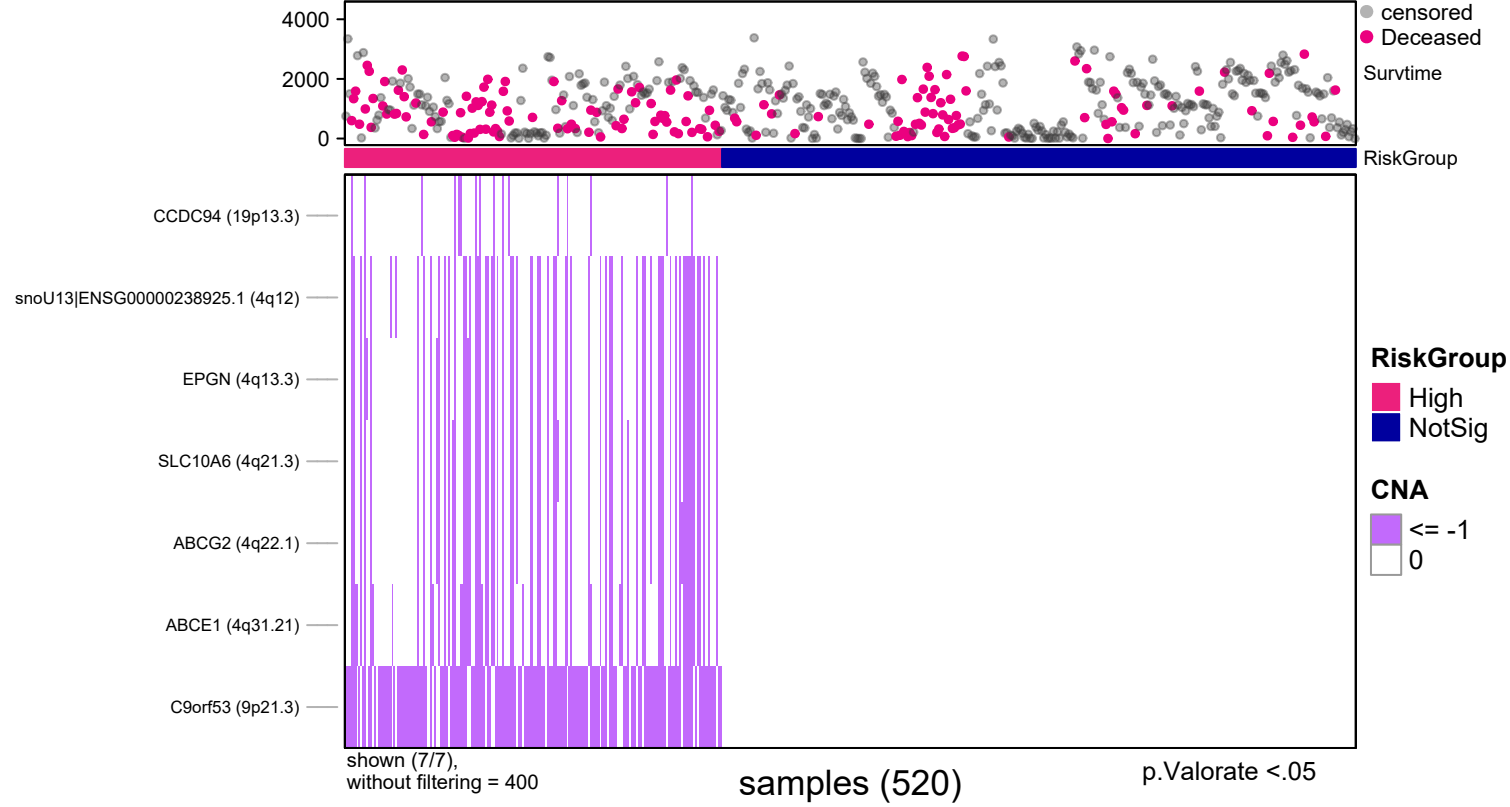


explanatory	beta	HR	L95	U95	p
Low	-0.54	0.58	0.34	0.99	0.04
High	0.54	1.72	1.24	2.39	0.00

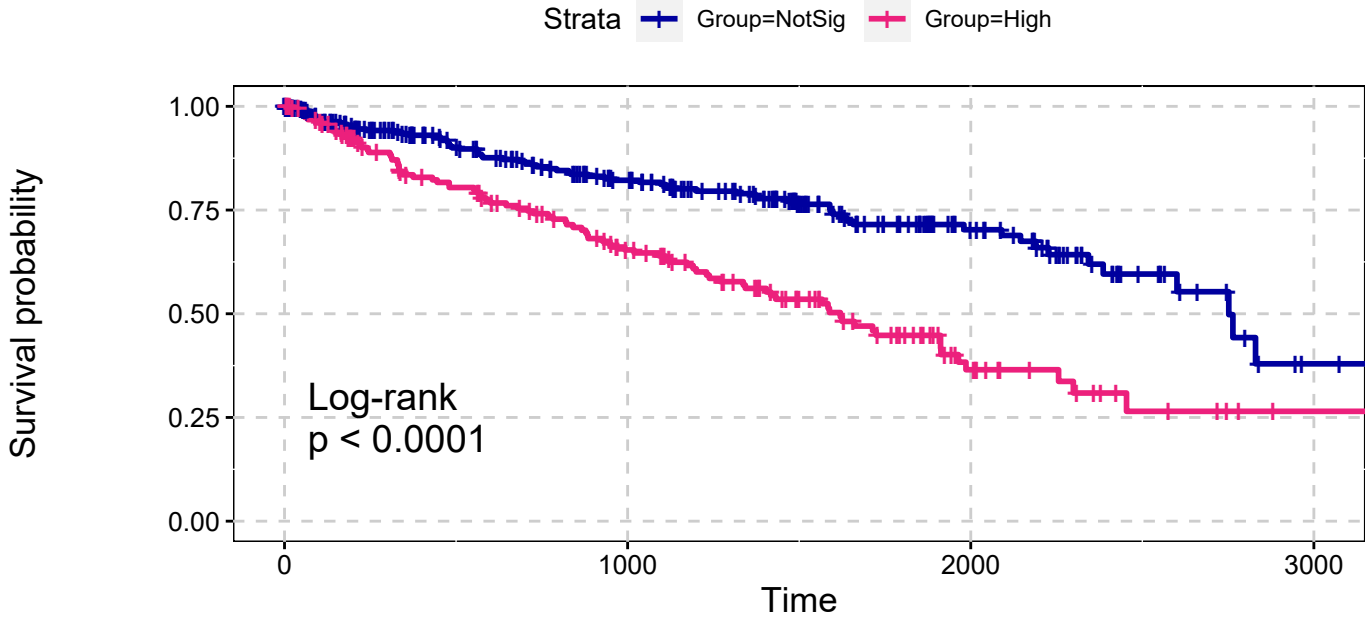
n= 520, number of events =160
Score(logrank) test = p <.0001



KIRC
All Deletions
Single Data Signature



KIRC
All Deletions
Single Data Signature

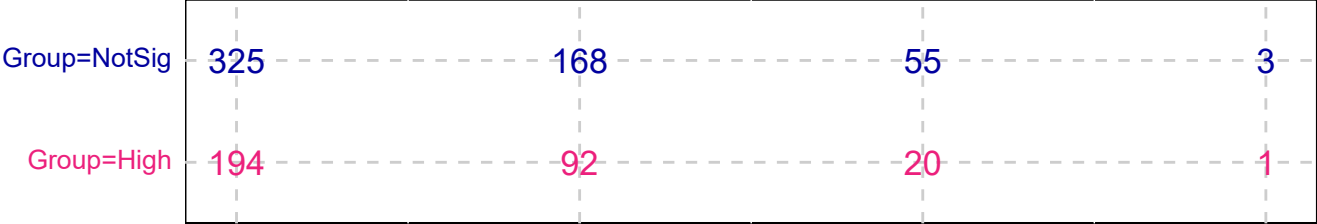


explanatory	beta	HR	L95	U95	p
High	0.81	2.25	1.64	3.07	0.00

n= 520, number of events =160
Score(logrank) test = $p < .0001$

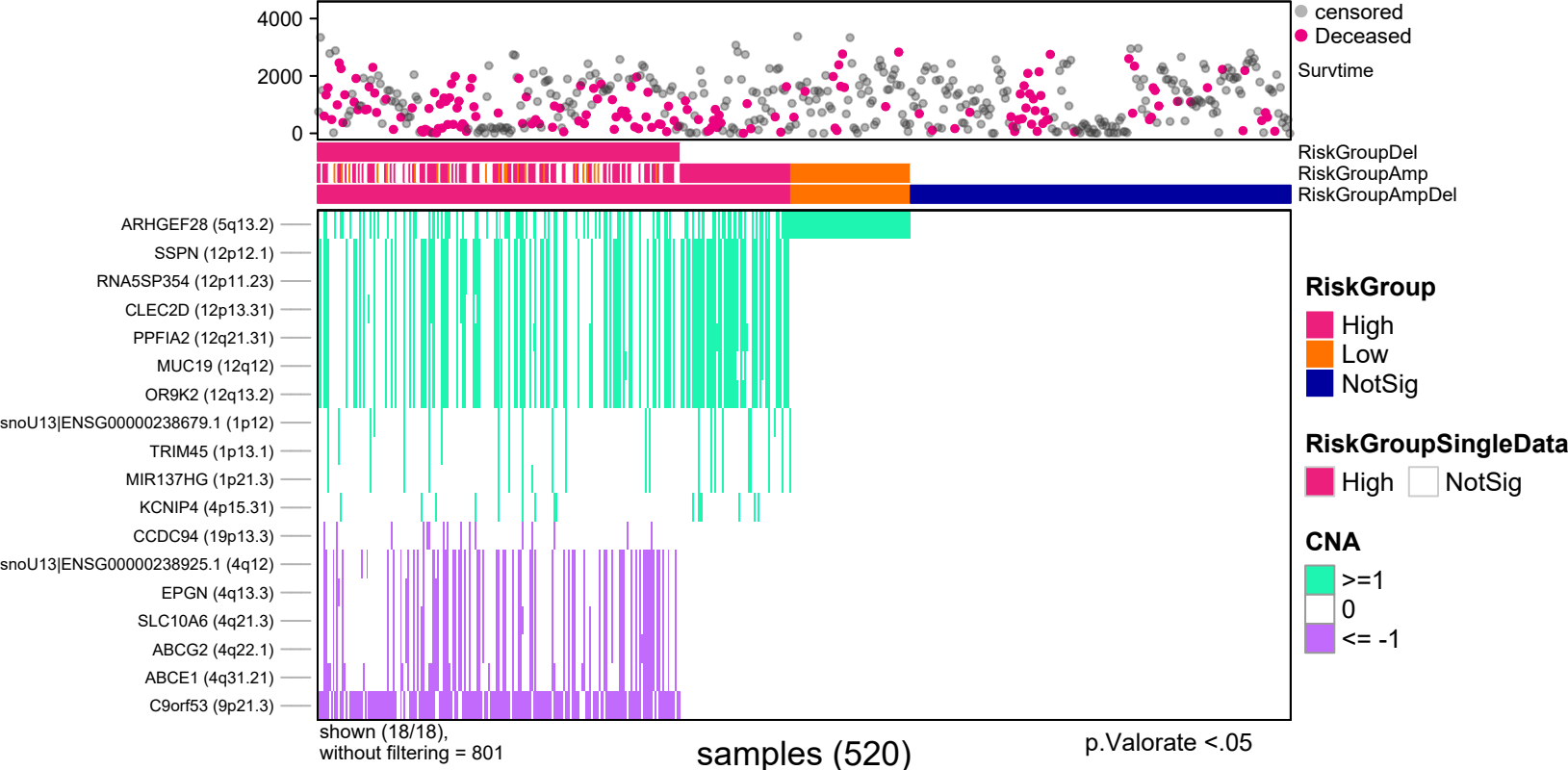
p.Valorate <.05

Number at risk

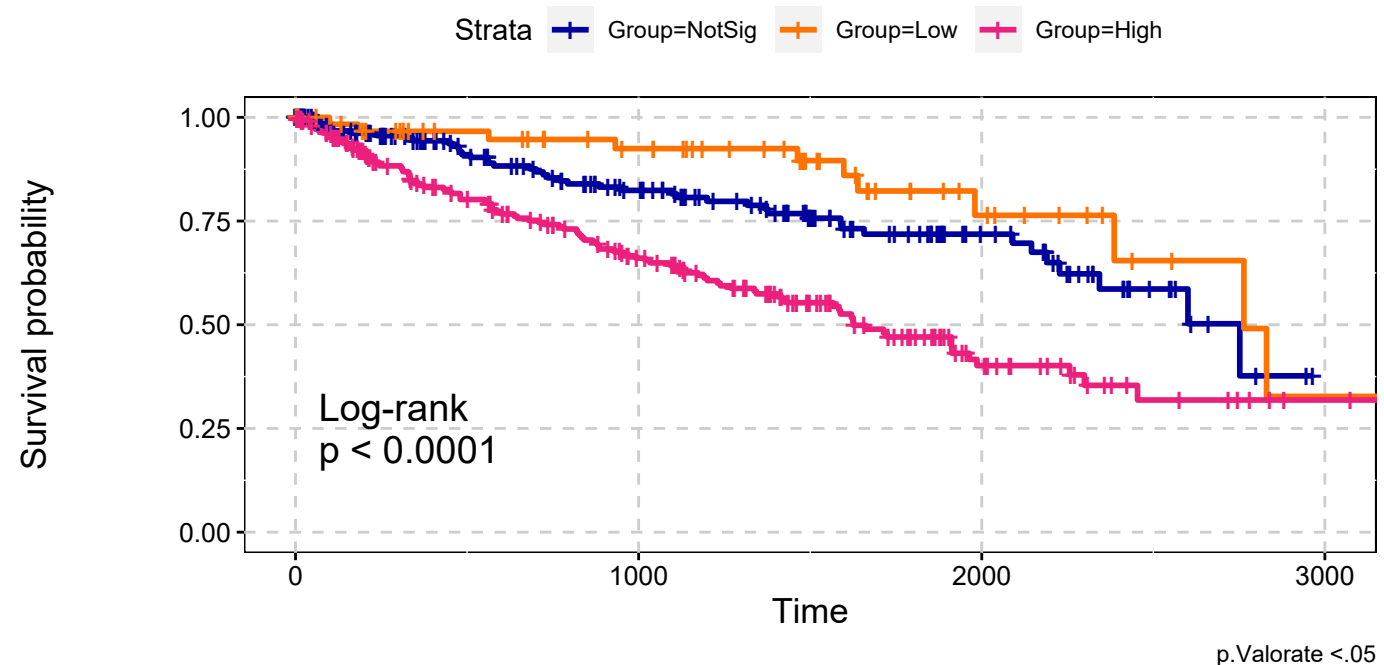


p.Valorate <.05

KIRC
All Amplifications & All Deletions
Max Sum Significance Signatures

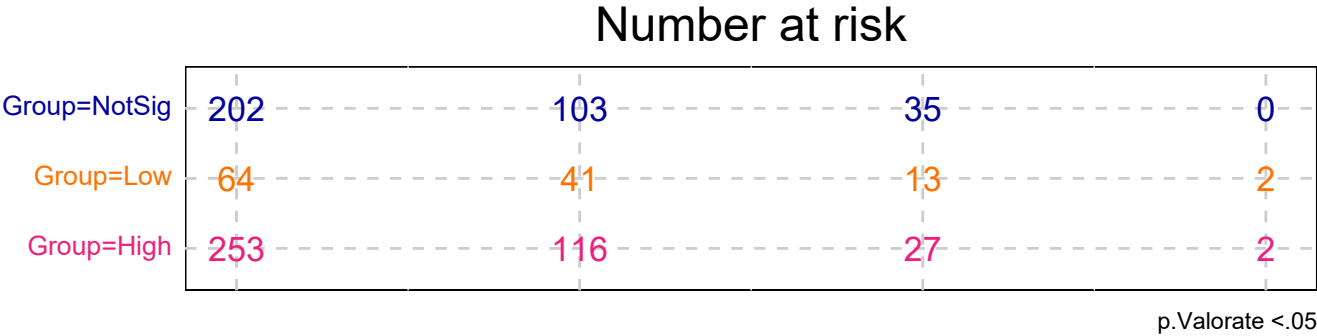


KIRC
All Amplifications & All Deletions
Max Sum Significance Signatures

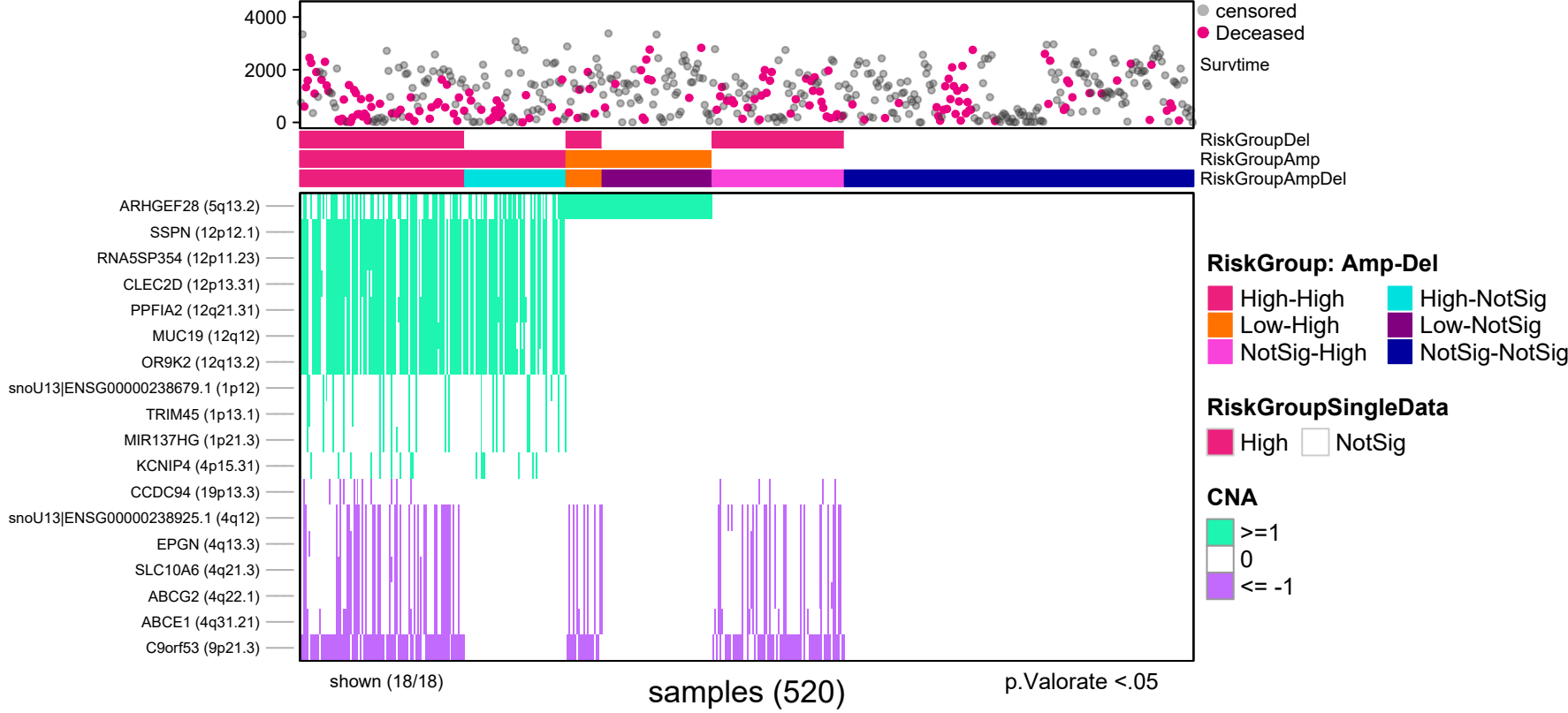


explanatory	beta	HR	L95	U95	p
Low	-0.44	0.65	0.33	1.25	0.20
High	0.75	2.11	1.48	3.01	0.00

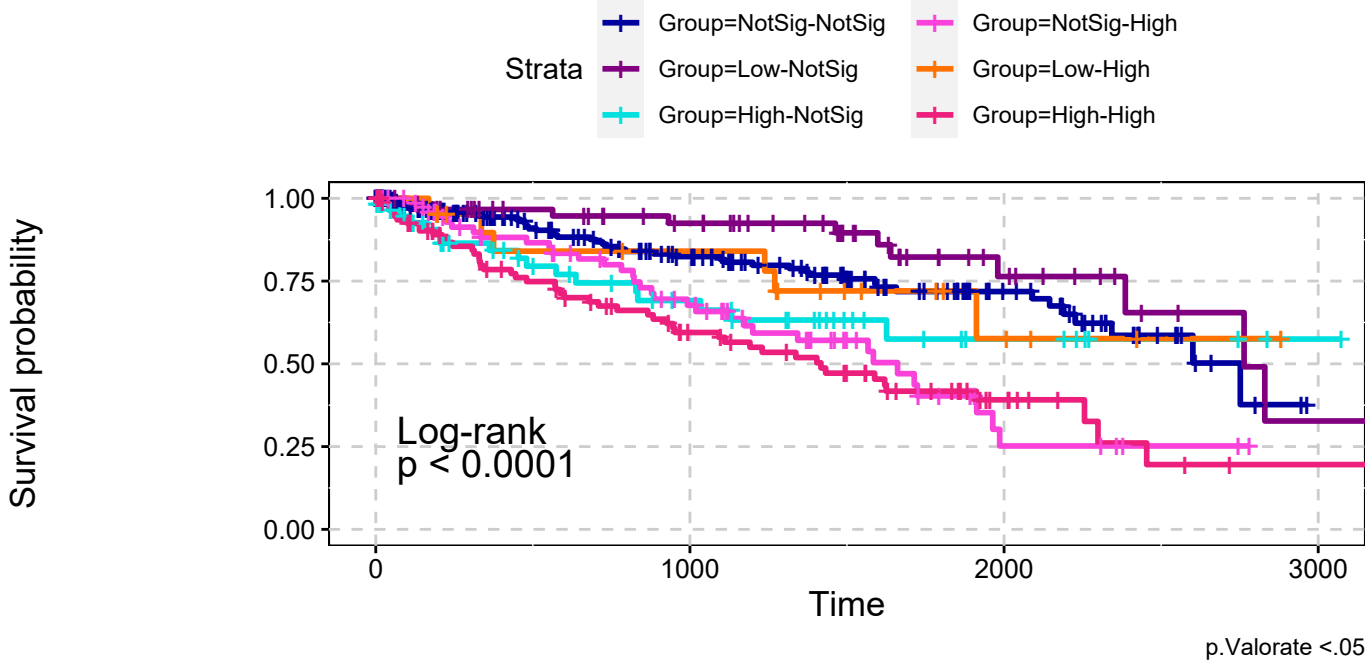
n= 520, number of events =160
Score(logrank) test = p <.0001



KIRC
All Amplifications & All Deletions
combining signatures



KIRC
All Amplifications & All Deletions
combining signatures



explanatory	beta	HR	L95	U95	p
Low-NotSig	-0.44	0.64	0.33	1.25	0.19
High-NotSig	0.46	1.58	0.90	2.78	0.11
NotSig-High	0.79	2.21	1.41	3.48	0.00
Low-High	0.11	1.11	0.47	2.62	0.80
High-High	0.97	2.63	1.75	3.95	0.00

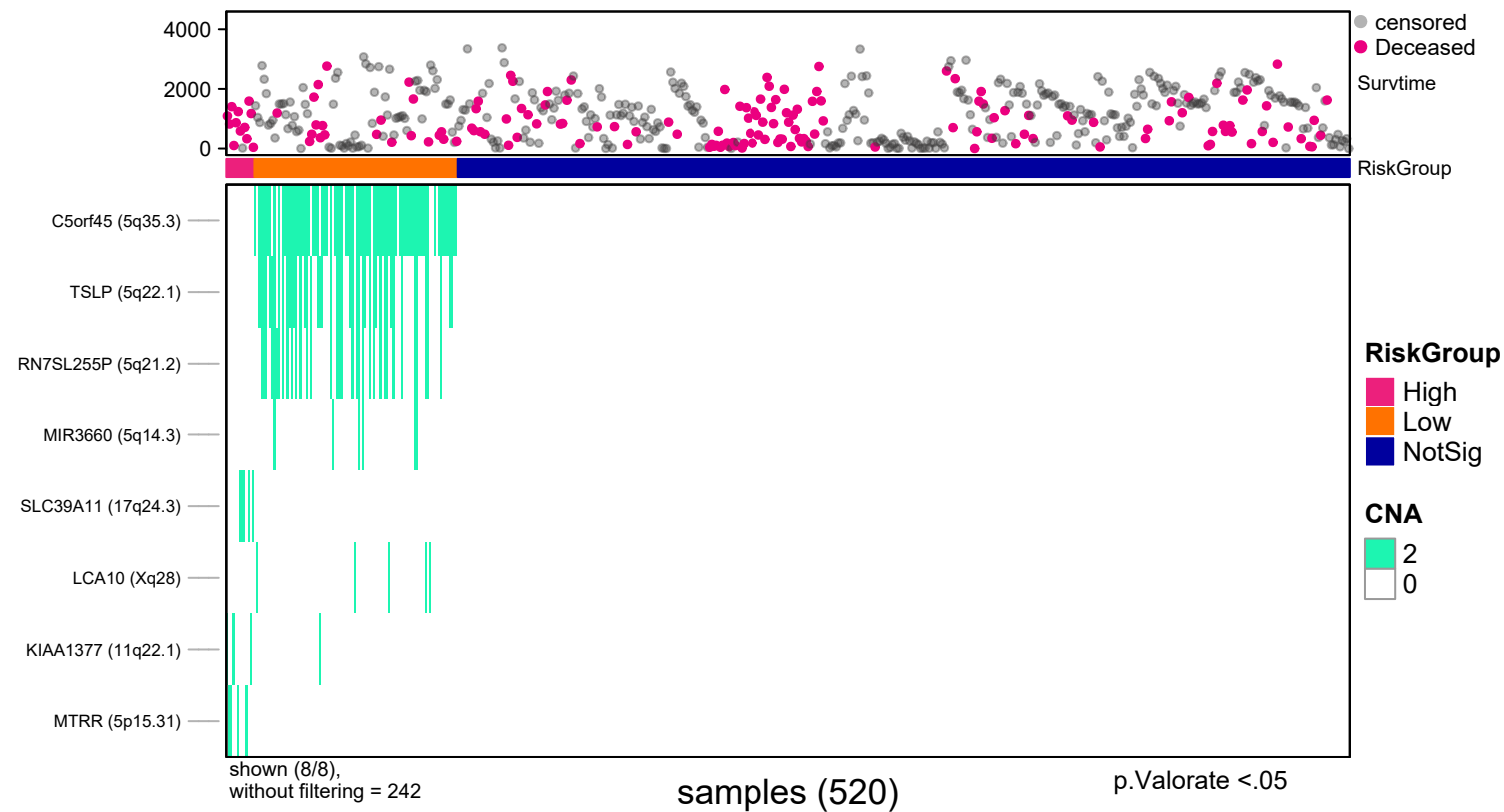
n= 520, number of events =160
Score(logrank) test = $p < .0001$

Number at risk

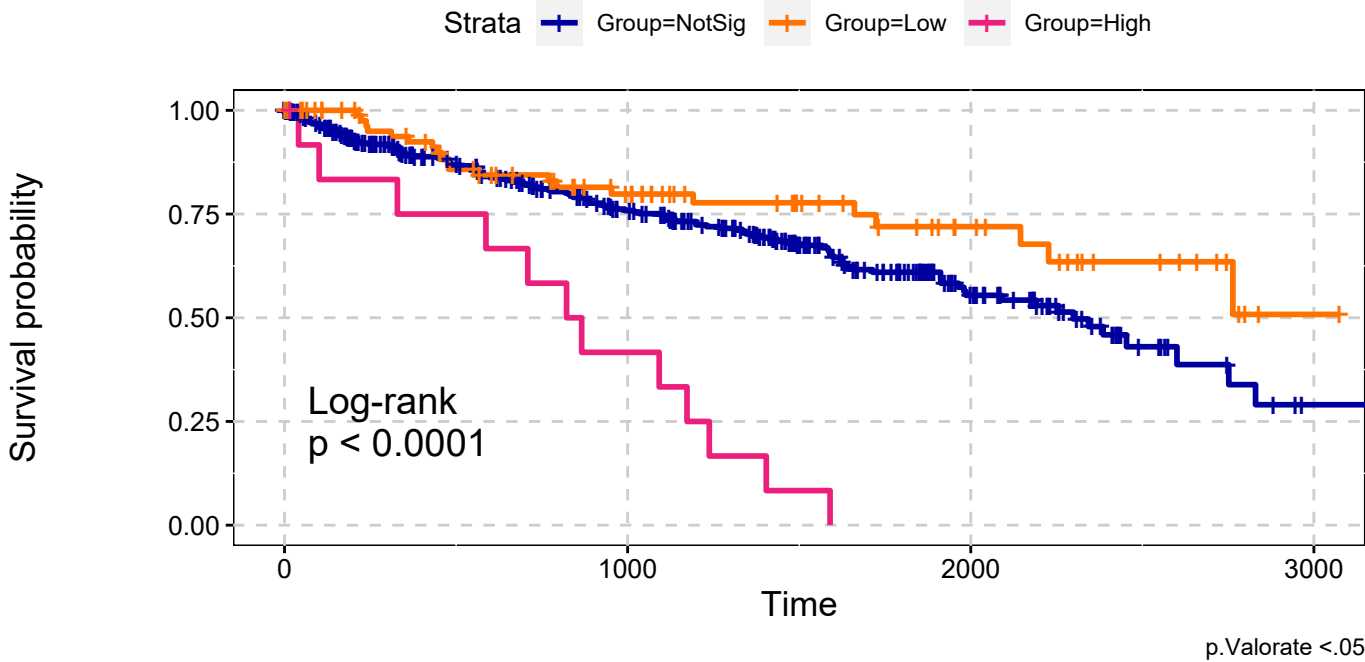
Group=NotSig-NotSig	202	103	35	0
Group=Low-NotSig	64	41	13	2
Group=High-NotSig	59	24	7	1
Group=NotSig-High	77	37	5	0
Group=Low-High	21	14	4	0
Group=High-High	96	41	11	1

RiskGroup: Amp-Del, p.Valorate <.05

KIRC
Deep Amplifications
Single Data Signature

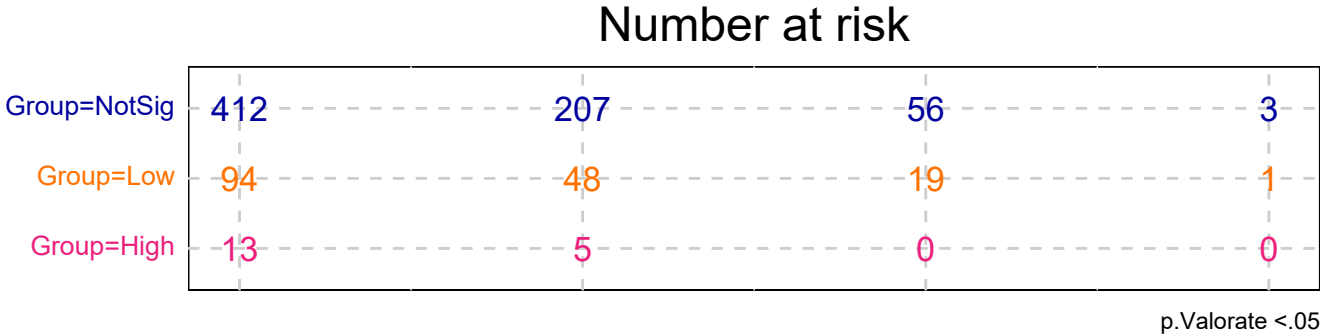


KIRC
Deep Amplifications
Single Data Signature

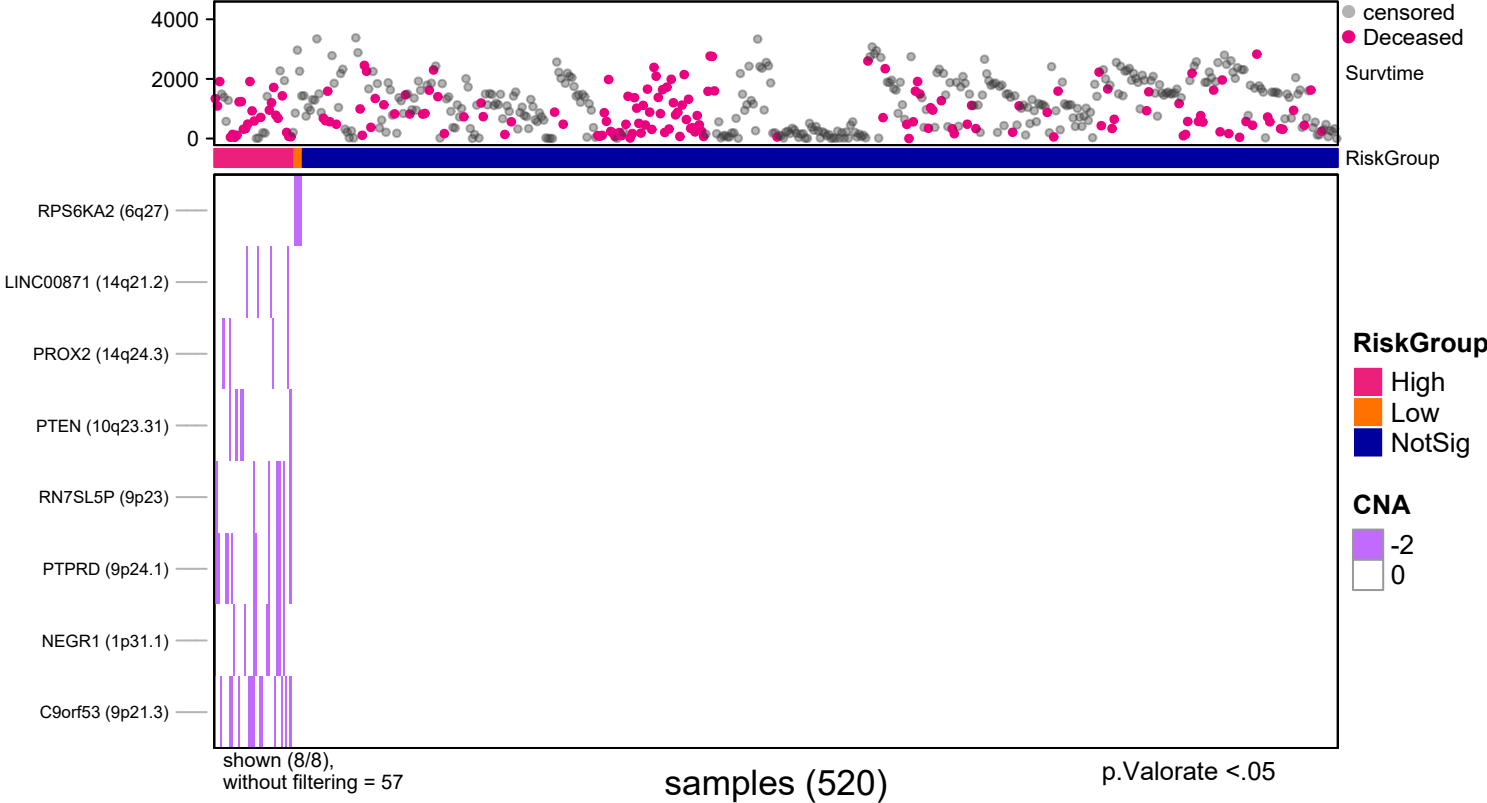


explanatory	beta	HR	L95	U95	p
Low	-0.44	0.64	0.41	1.03	0.06
High	1.48	4.41	2.42	8.03	0.00

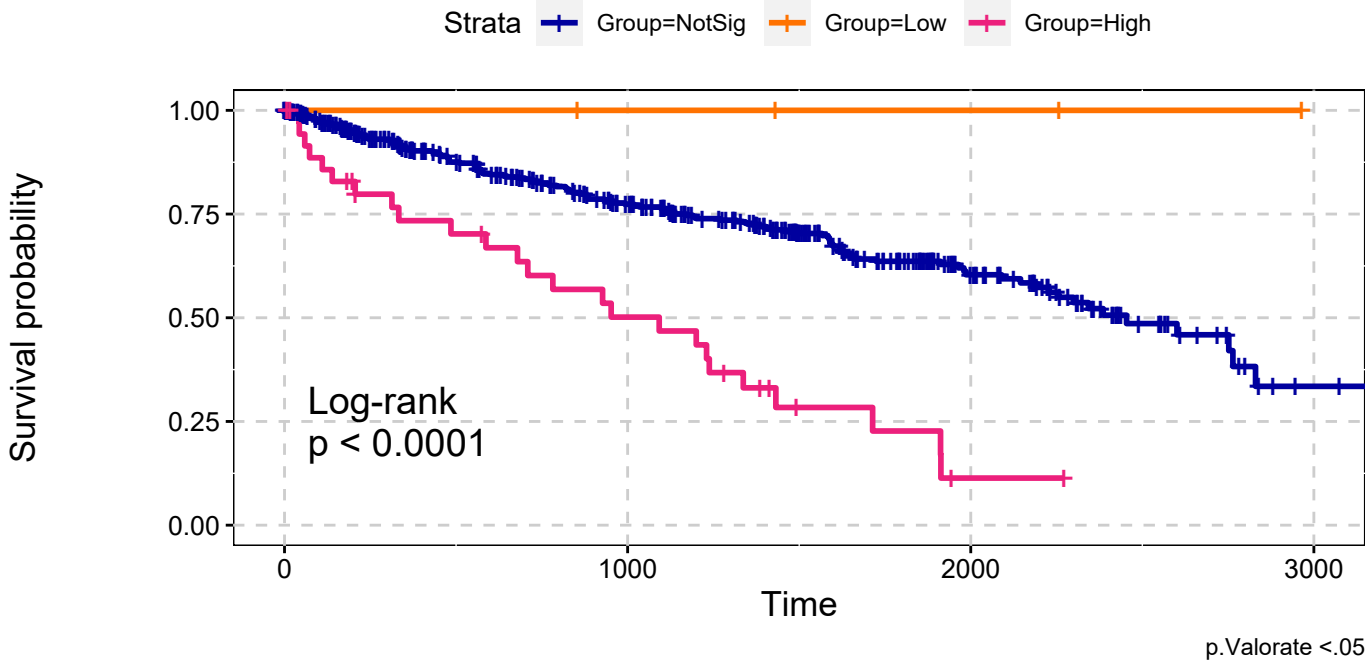
n= 520, number of events =160
Score(logrank) test = $p < .0001$



KIRC
Deep Deletions
Single Data Signature

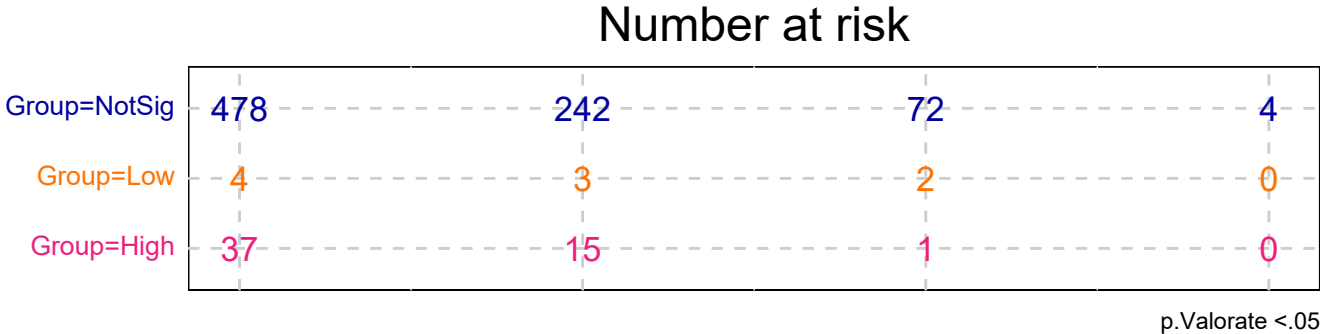


KIRC
Deep Deletions
Single Data Signature

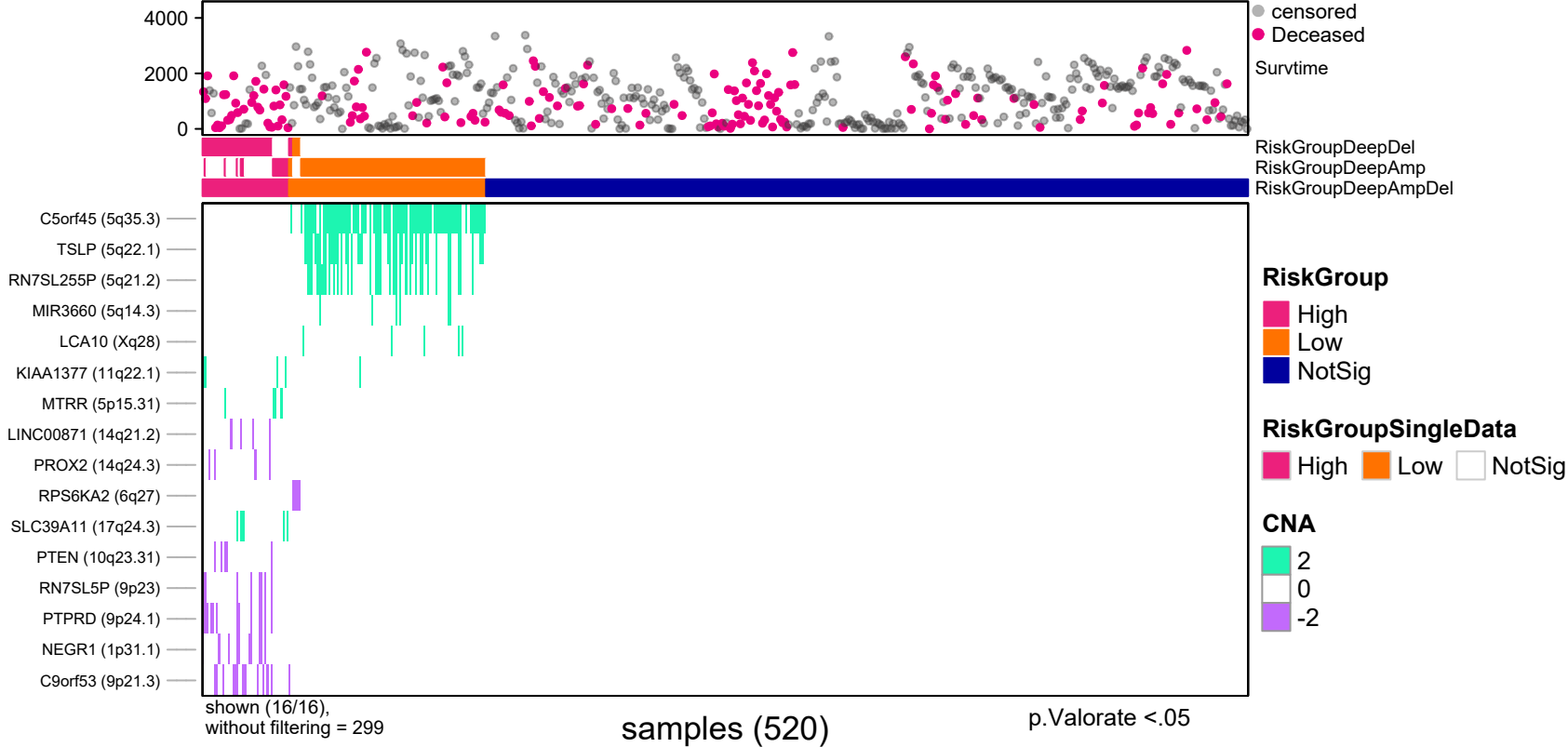


explanatory	beta	HR	L95	U95	p
Low	-16.13	0.00	0.00	Inf	0.99
High	1.20	3.31	2.15	5.09	0.00

n= 520, number of events =160
Score(logrank) test = p <.0001



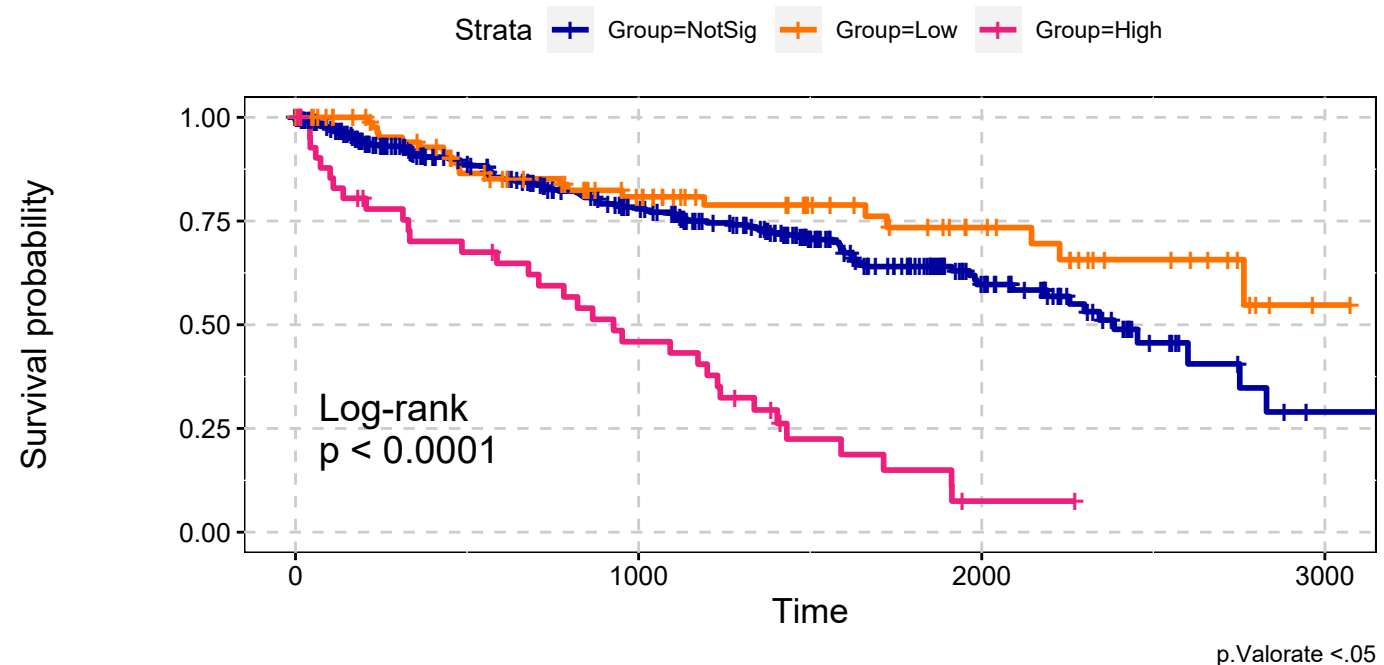
KIRC
Deep Amplifications & Deep Deletions
Max Sum Significance Signatures



KIRC

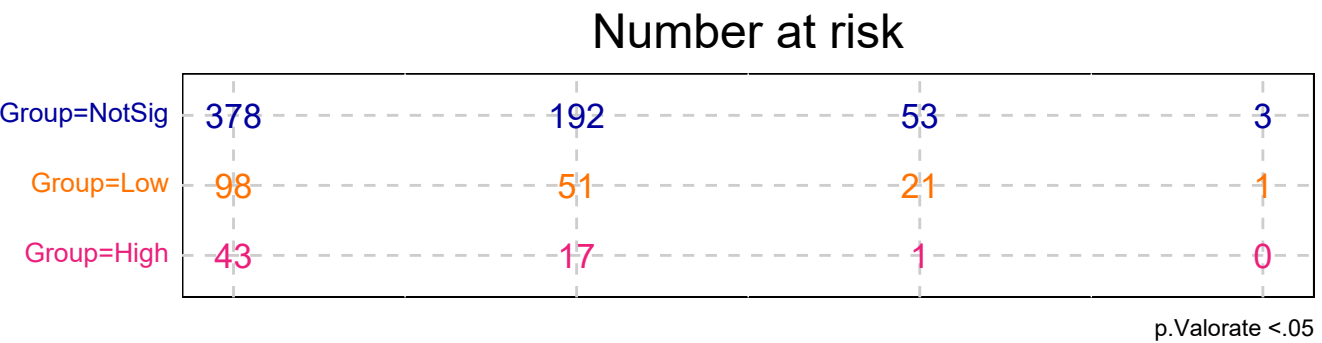
Deep Amplifications & Deep Deletions

Max Sum Significance Signatures

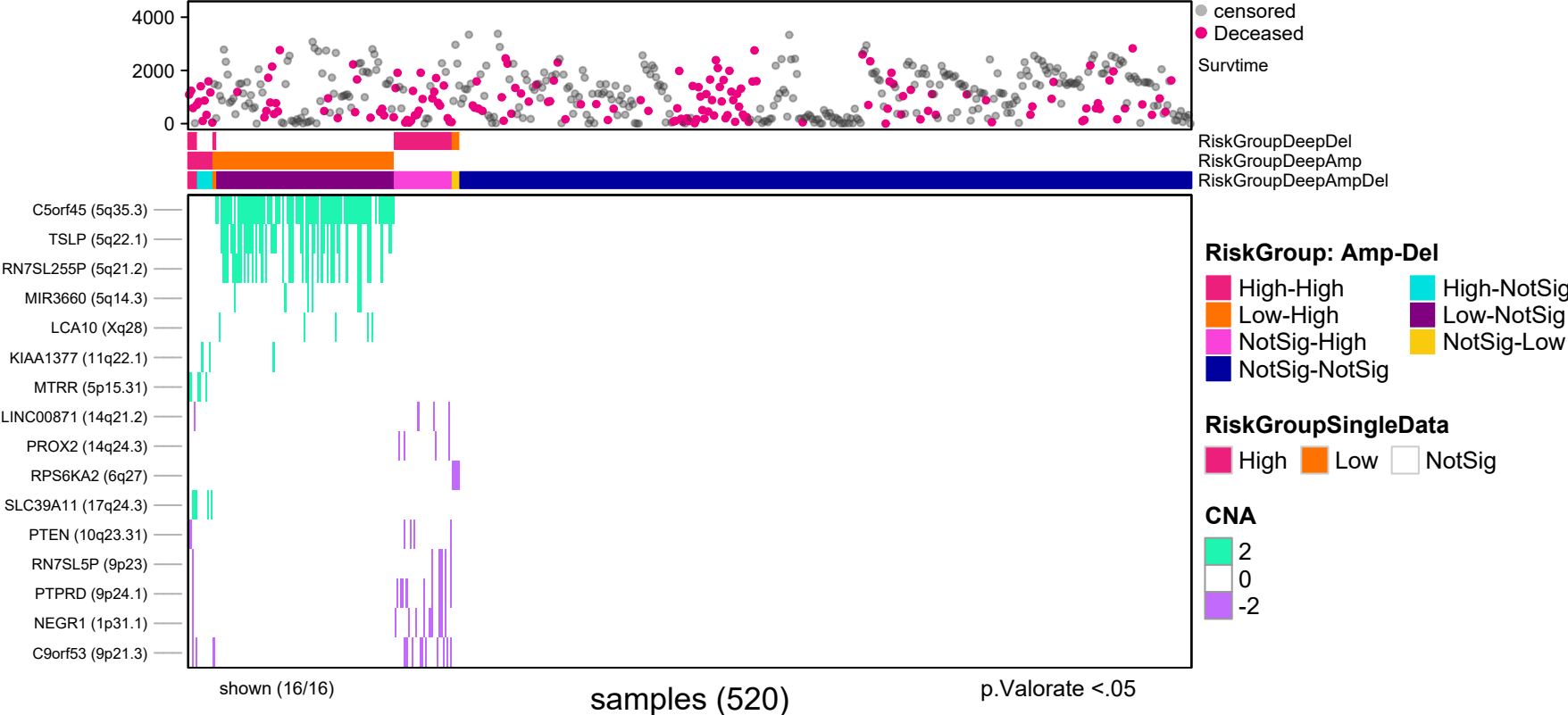


explanatory	beta	HR	L95	U95	p
Low	-0.42	0.66	0.41	1.05	0.08
High	1.33	3.79	2.55	5.63	0.00

n= 520, number of events =160
Score(logrank) test = p <.0001

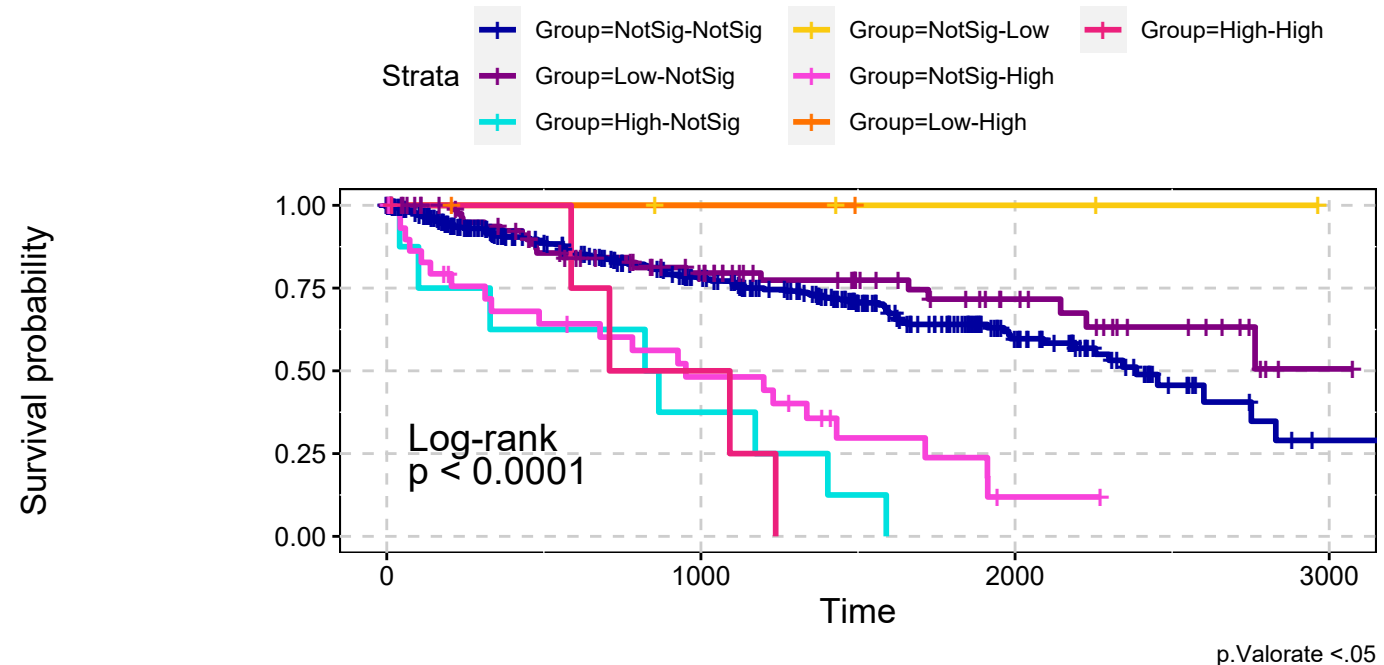


KIRC
Deep Amplifications & Deep Deletions
combining signatures



KIRC

Deep Amplifications & Deep Deletions combining signatures



explanatory	beta	HR	L95	U95	p
Low-NotSig	-0.33	0.72	0.45	1.15	0.17
High-NotSig	1.66	5.24	2.54	10.82	0.00
NotSig-Low	-15.55	0.00	0.00	Inf	0.99
NotSig-High	1.21	3.35	2.09	5.37	0.00
Low-High	-15.48	0.00	0.00	Inf	1.00
High-High	1.51	4.51	1.65	12.33	0.00

n= 520, number of events =160
Score(logrank) test = p <.0001

Number at risk

Group=NotSig-NotSig	378	192	53	3
Group=Low-NotSig	92	47	19	1
Group=High-NotSig	8	3	0	0
Group=NotSig-Low	4	3	2	0
Group=NotSig-High	30	12	1	0
Group=Low-High	2	1	0	0
Group=High-High	5	2	0	0

RiskGroup: Amp-Del, p.Valorate <.05