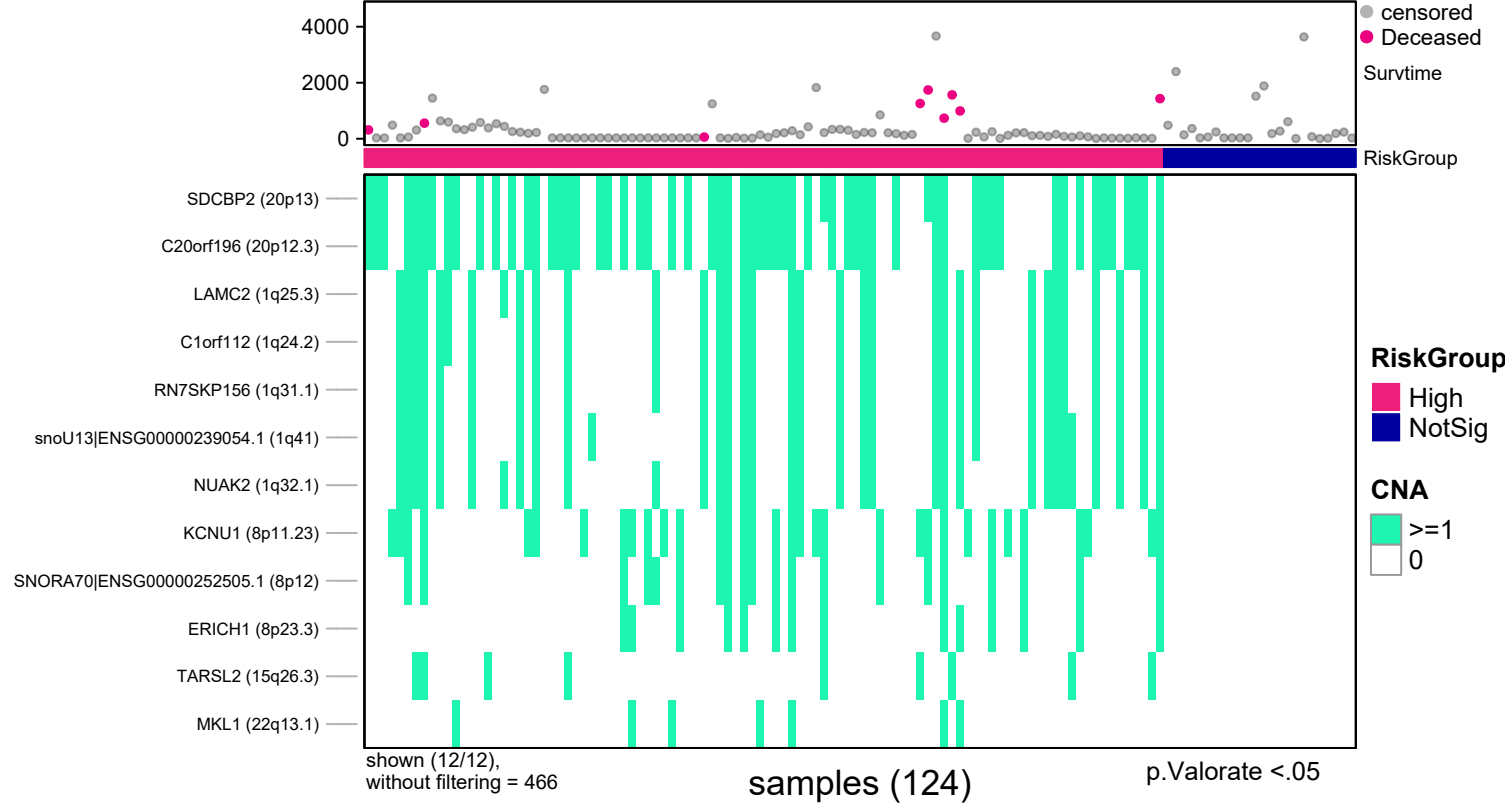
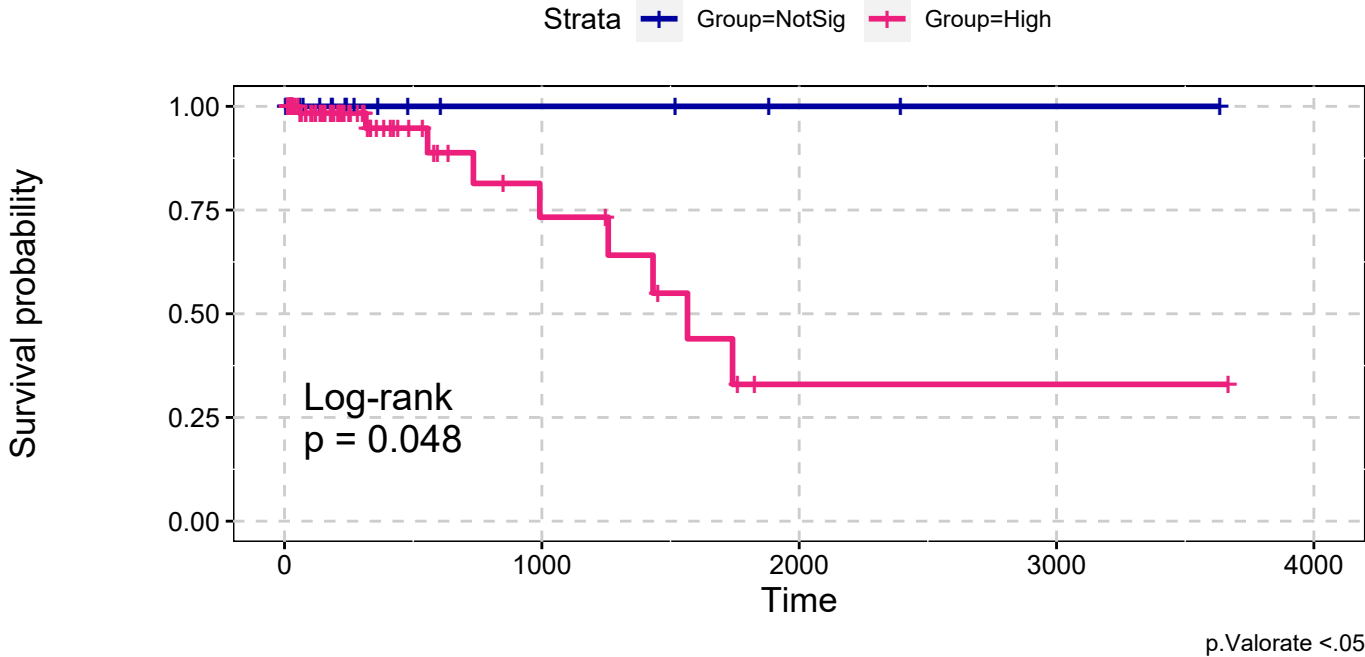


READ
All Amplifications
Single Data Signature



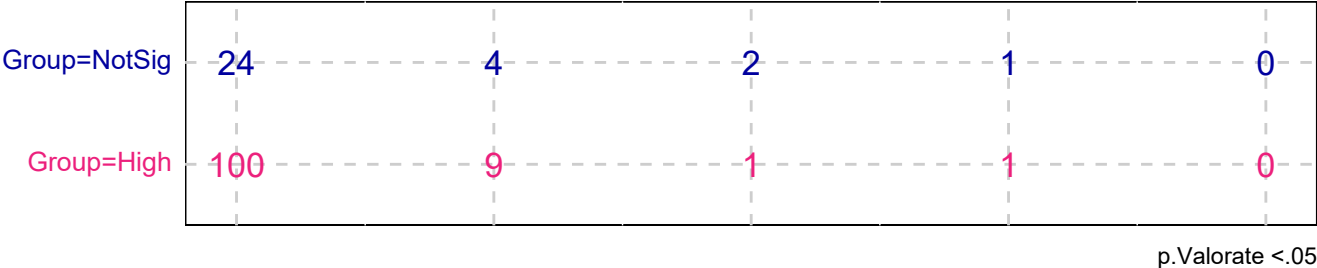
READ
All Amplifications
Single Data Signature



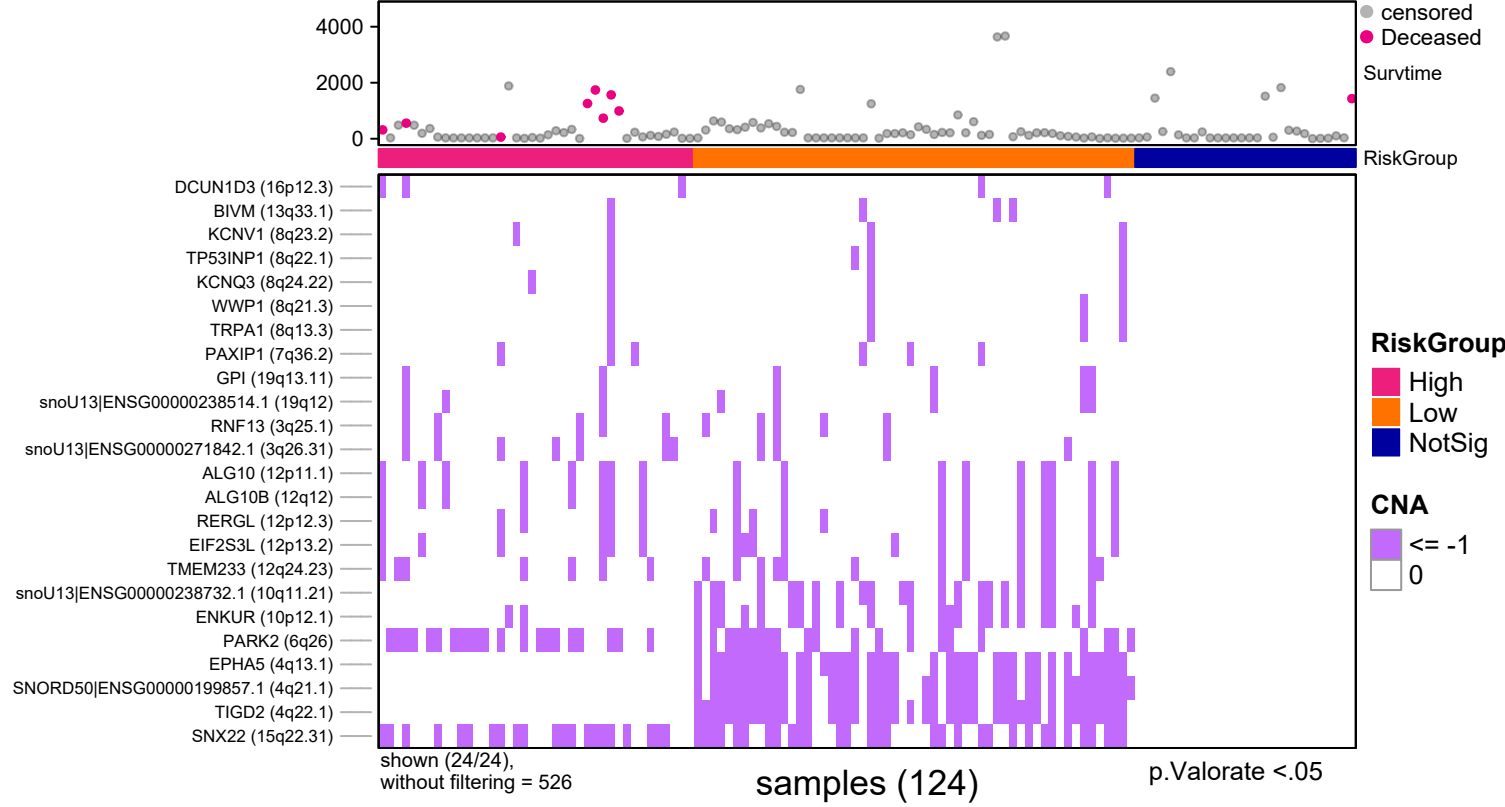
explanatory	beta	HR	L95	U95	p
High	19.64	337551252.13	0.00	Inf	1.00

n= 124, number of events =9
Score(logrank) test = 0.048

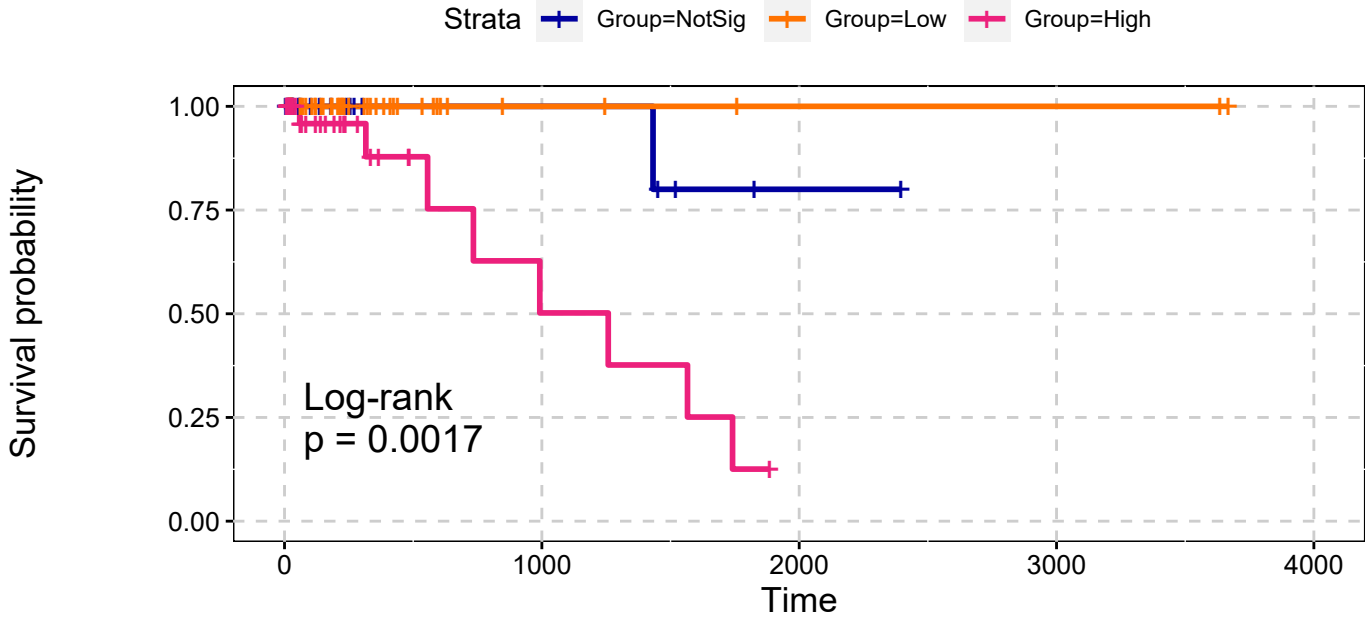
Number at risk



READ
All Deletions
Single Data Signature



READ
All Deletions
Single Data Signature

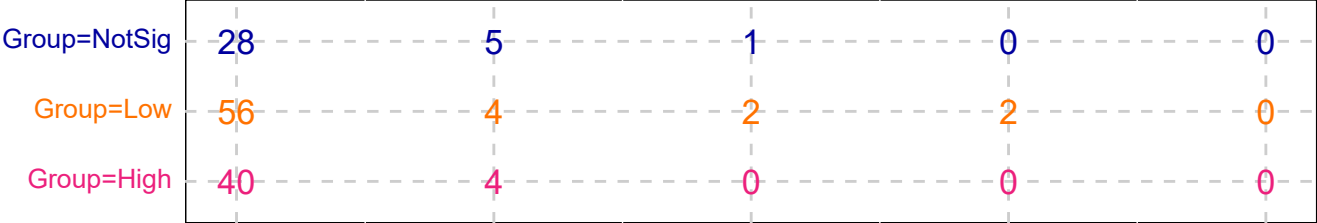


p.Valorate <.05

explanatory	beta	HR	L95	U95	p
Low	-18.83	0.00	0.00	Inf	1.00
High	1.95	7.06	0.87	57.40	0.07

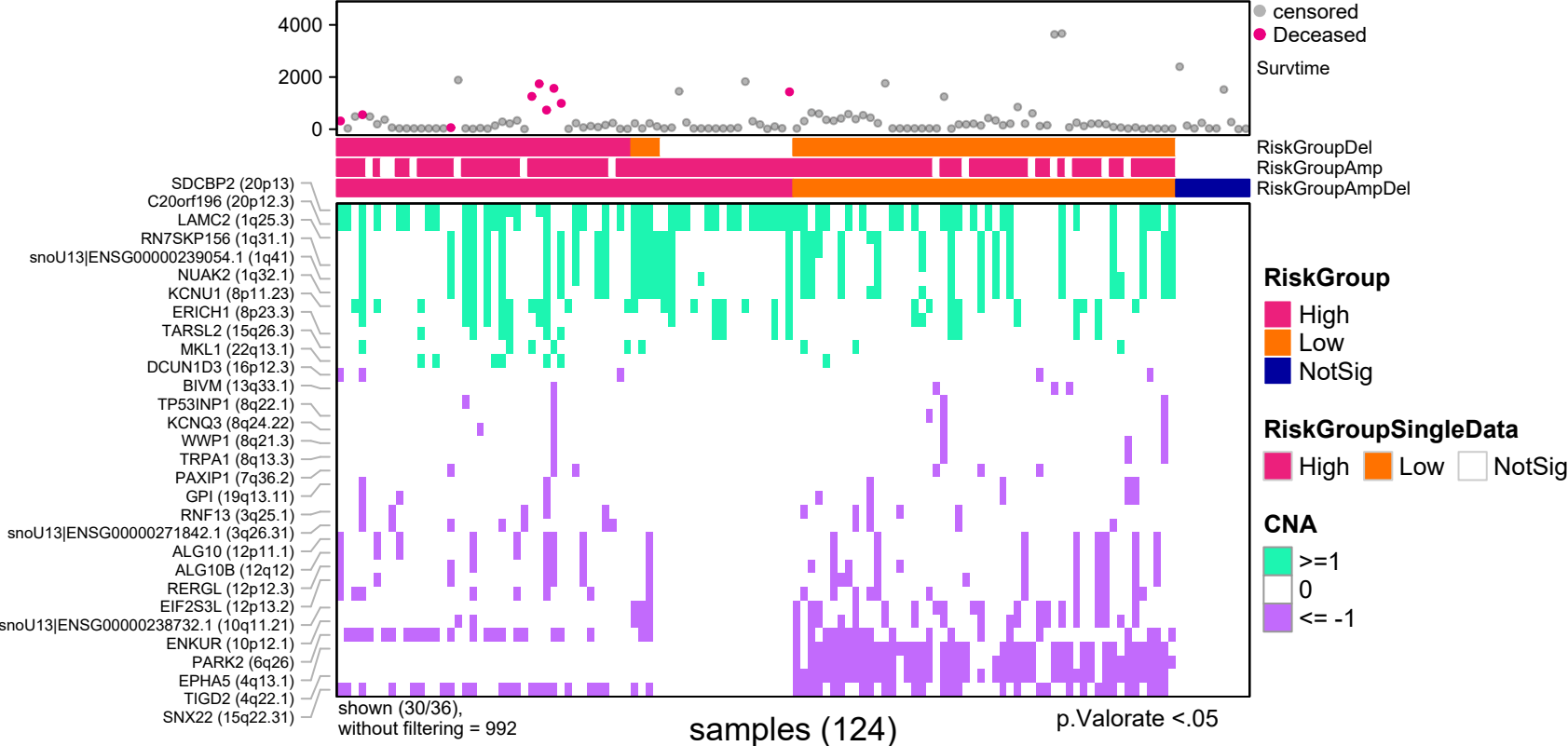
n= 124, number of events =9
Score(logrank) test = 0.002

Number at risk

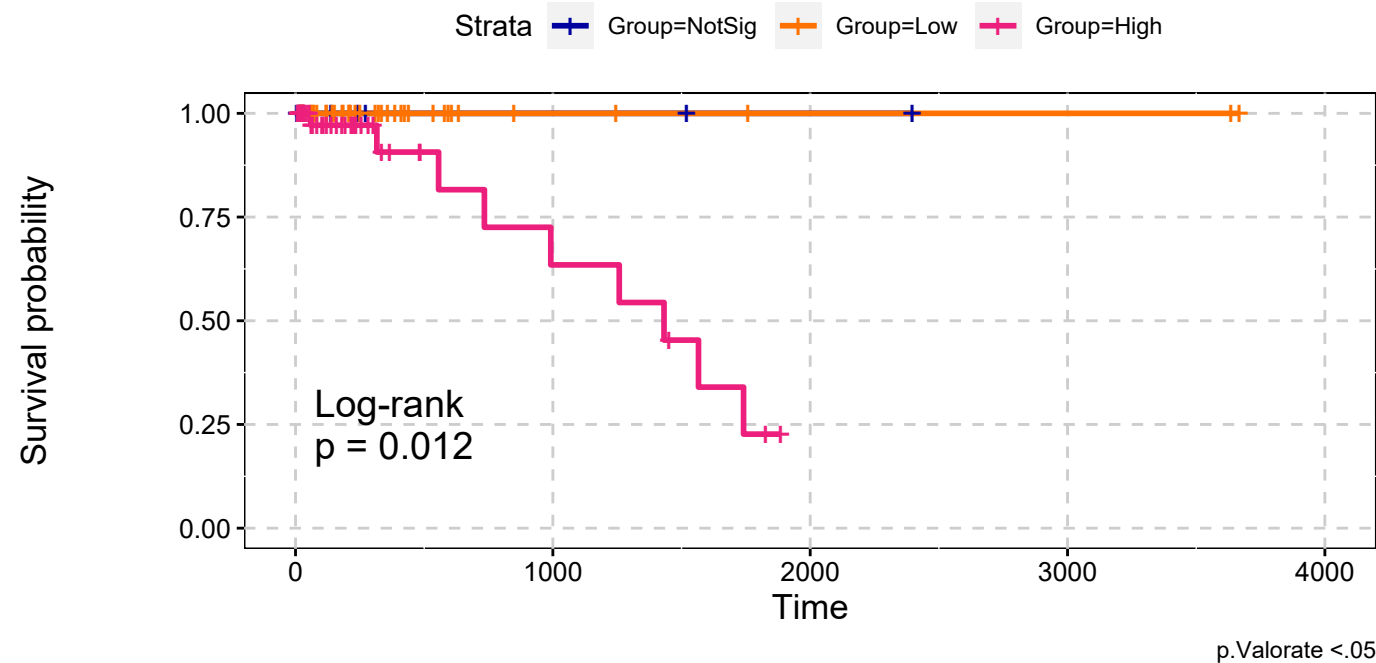


p.Valorate <.05

READ
All Amplifications & All Deletions
Max Sum Significance Signatures

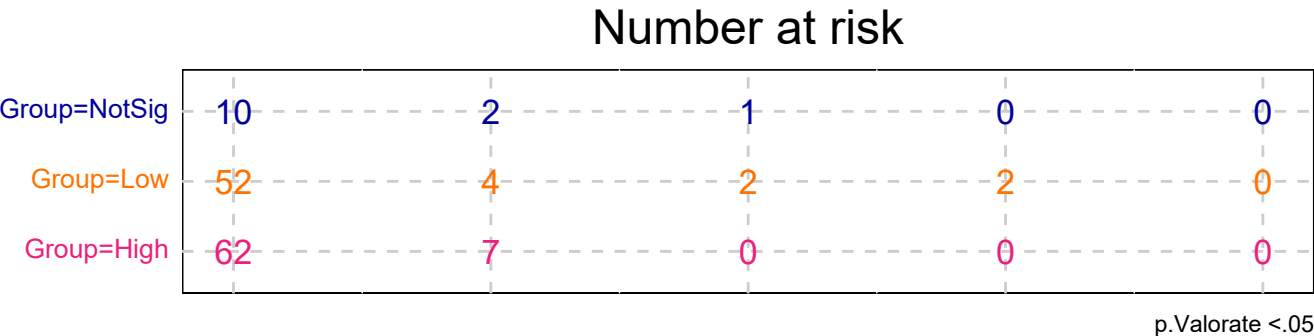


READ
All Amplifications & All Deletions
Max Sum Significance Signatures

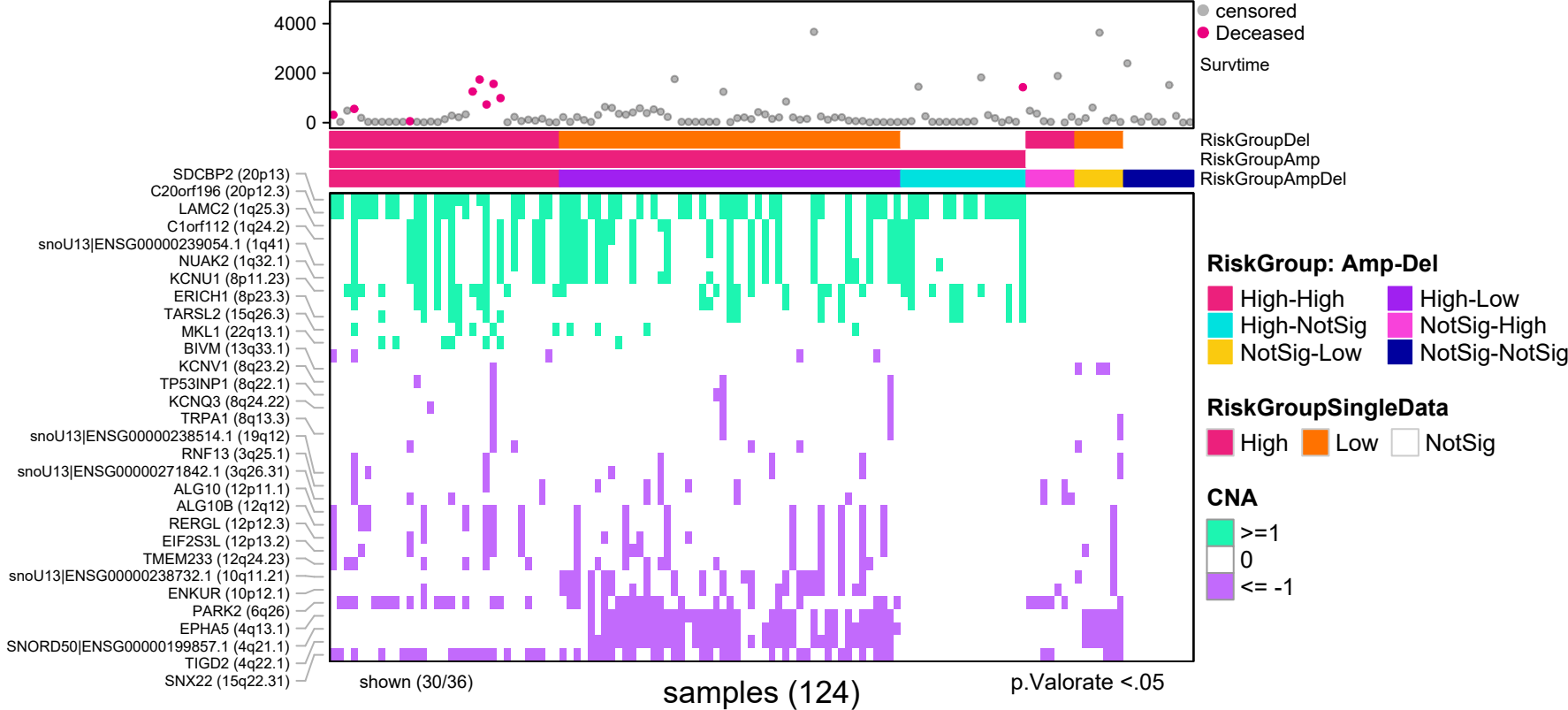


explanatory	beta	HR	L95	U95	p
Low	-0.07	0.93	0.00	Inf	1.00
High	21.16	1543285774.78	0.00	Inf	1.00

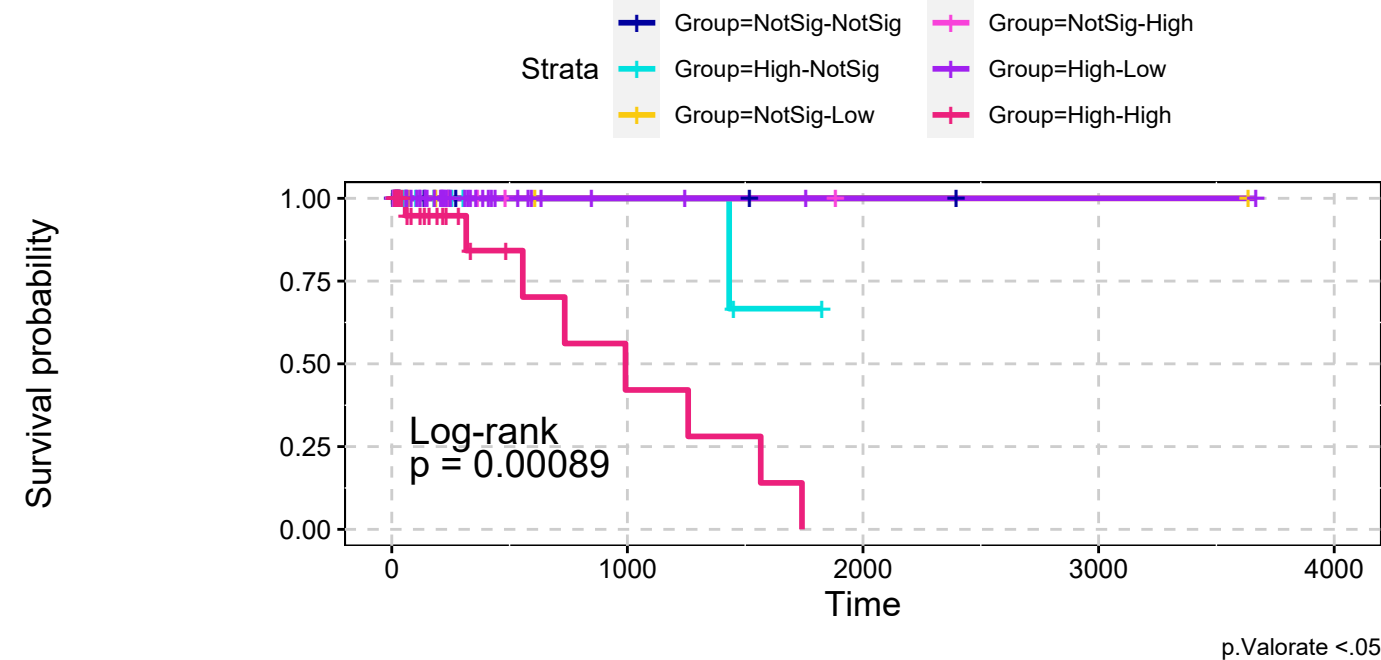
n= 124, number of events =9
Score(logrank) test = 0.012



READ
All Amplifications & All Deletions
combining signatures



READ
All Amplifications & All Deletions
combining signatures



explanatory	beta	HR	L95	U95	p
High-NotSig	20.20	594252762.25	0.00	Inf	1.00
NotSig-Low	-0.03	0.97	0.00	Inf	1.00
NotSig-High	-0.03	0.97	0.00	Inf	1.00
High-Low	0.04	1.04	0.00	Inf	1.00
High-High	21.95	3401600294.23	0.00	Inf	1.00

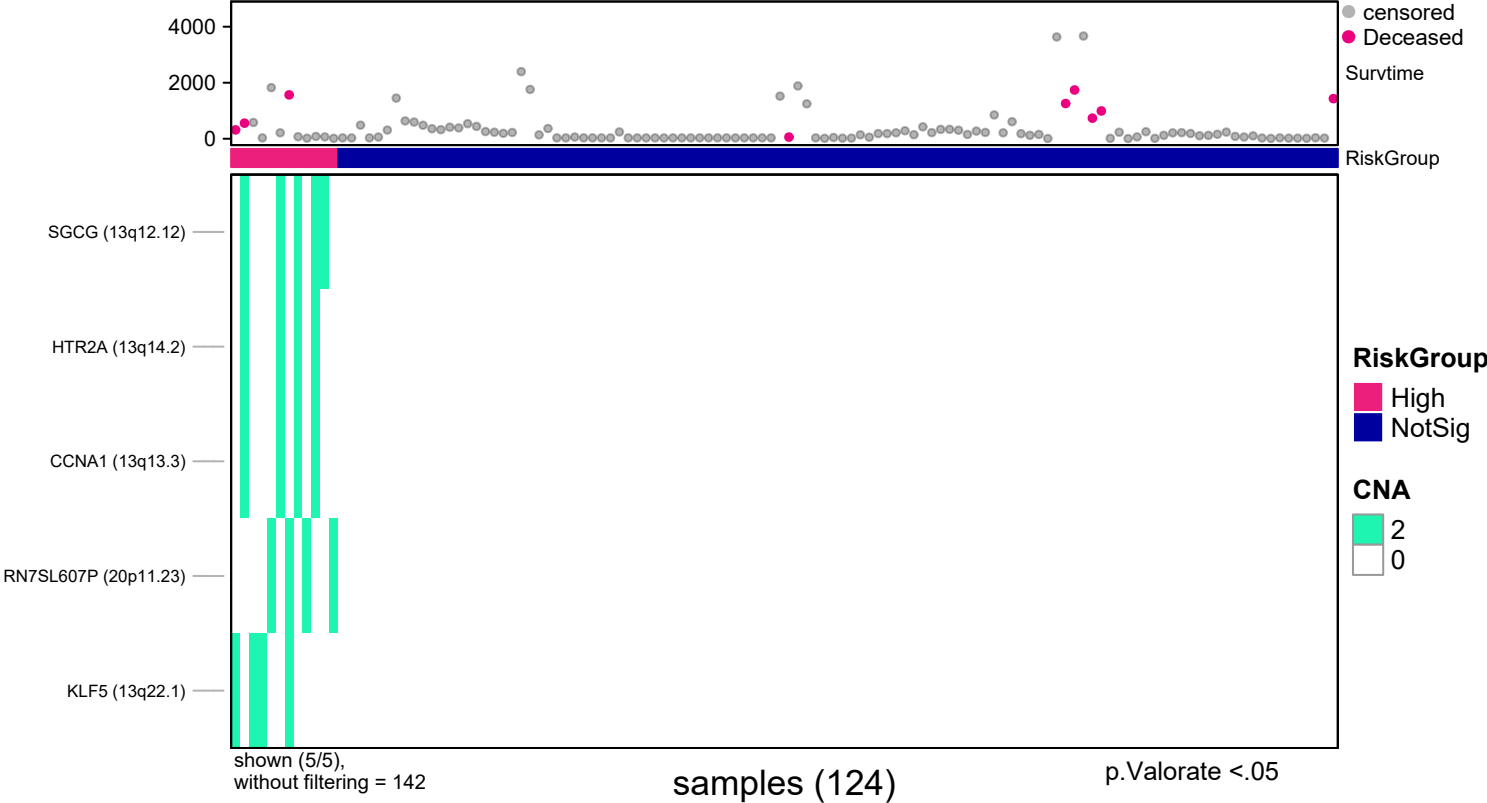
n= 124, number of events =9
Score(logrank) test = 0.001

Number at risk

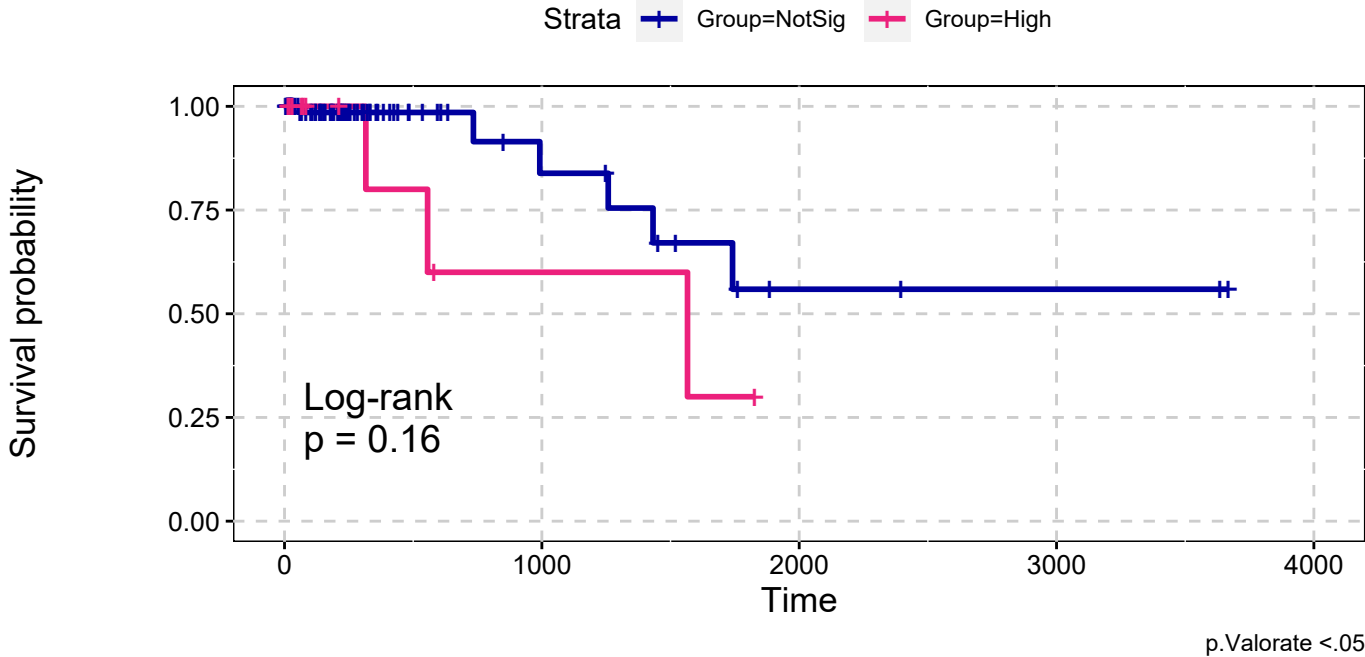
Group=NotSig-NotSig	10	2	1	0	0
Group=High-NotSig	18	3	0	0	0
Group=NotSig-Low	7	1	1	1	0
Group=NotSig-High	7	1	0	0	0
Group=High-Low	49	3	1	1	0
Group=High-High	33	3	0	0	0

RiskGroup: Amp-Del, p.Valorate <.05

READ
Deep Amplifications
Single Data Signature



READ
Deep Amplifications
Single Data Signature



explanatory	beta	HR	L95	U95	p
High	0.96	2.61	0.65	10.55	0.18

n= 124, number of events =9
Score(logrank) test = 0.163

